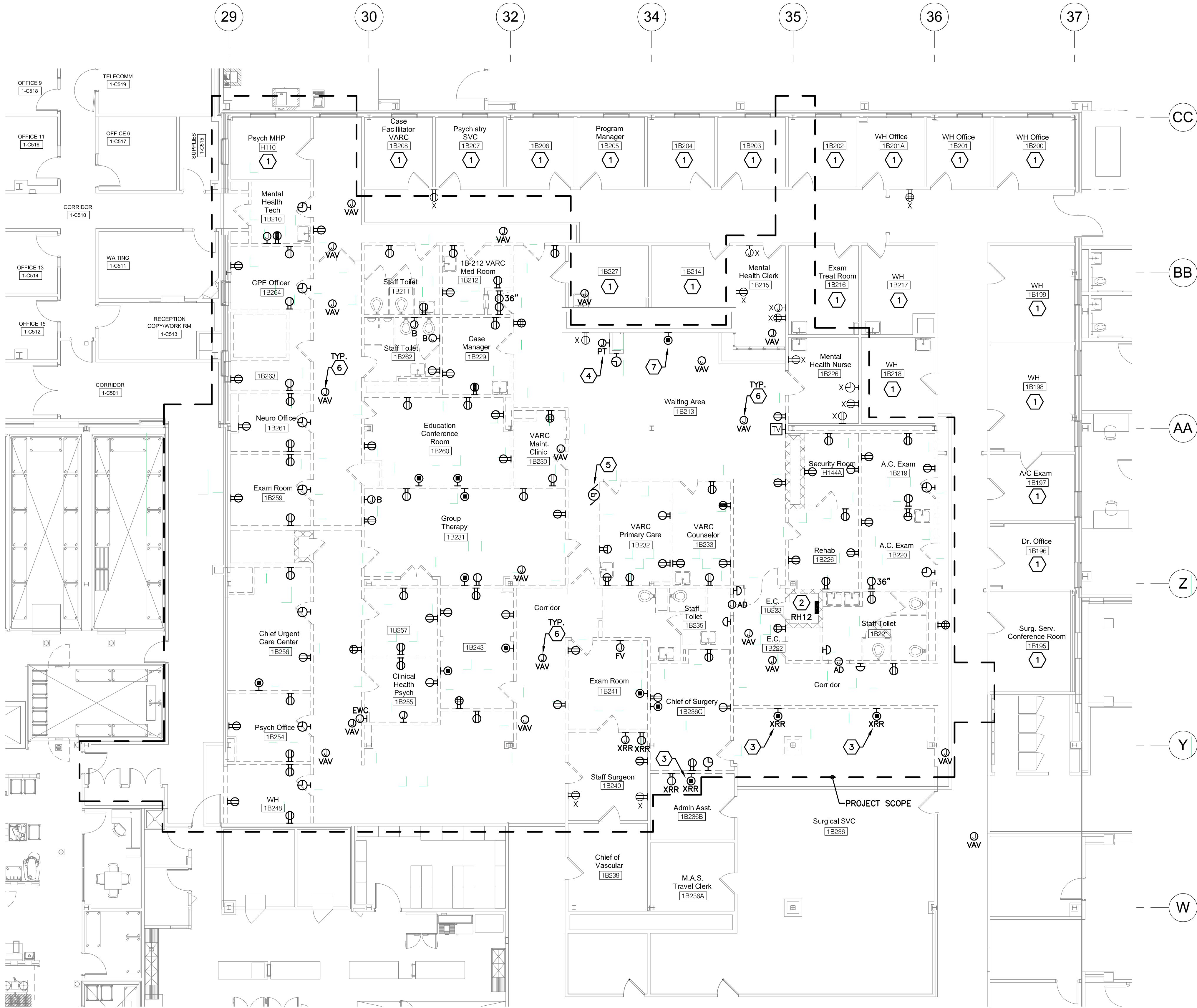


three inches = one foot
one and one half inches = one foot
one inch = one foot
three quarters inch = one foot
one half inch = one foot
three eighths inch = one foot
one quarter inch = one foot
one eighth inch = one foot



PARTIAL FIRST FLOOR
POWER DEMOLITION PLAN
SCALE: 1/8" = 10'
1

ELECTRICAL DEMOLITION NOTES

1. ALL EXISTING LIGHTING FIXTURES, RECEPTACLES, SPECIAL SYSTEMS OUTLETS, CONDUIT, WIRING ETC. THAT WILL NOT BE REUSED IN THE REMODELED INSTALLATION SHALL BE REMOVED UNLESS OTHERWISE NOTED. THIS DEMOLITION SHALL INCLUDE ALL ELECTRICAL ITEMS SHOWN ON THIS PLAN THAT ARE NOT DESIGNATED BY "X", "XN" OR "XRR" AND ALL OTHER ADDITIONAL ITEMS THAT ARE NOT SHOWN BUT THAT MUST BE REMOVED IN ORDER TO PRODUCE A NEAT, FINISHED, PROPERLY FUNCTIONING ELECTRICAL INSTALLATION. MAINTAIN CIRCUIT CONTINUITY TO ALL EXISTING REUSED ELECTRICAL SYSTEMS COMPONENTS - PROVIDE ALL CONDUIT AND WIRING NECESSARY TO ACHIEVE THE SAME. THE CONTRACTOR SHALL FIELD VERIFY THE NATURE AND EXTENT OF ALL DEMOLITION WORK AND SHALL INCLUDE COST FOR THE SAME IN THE BID SUBMITTAL.
2. ALL EXISTING REMOVED ELECTRICAL EQUIPMENT, DEVICES, ETC. THAT ARE NOT RETAINED BY THE OWNER SHALL BE DISPOSED OF BY THE ELECTRICAL CONTRACTOR.
3. DASHED WALLS ON PLAN INDICATE EXISTING CONSTRUCTION TO BE REMOVED.
4. REFER TO ELECTRICAL LEGEND FOR ALL SYMBOL DESIGNATIONS. NOTE SPECIAL ATTENTION TO SELECTED EXISTING DEVICES, WIRWAYS, ETC. MARKED XB, XRR OR XN, AND REMOVE/BLANK OFF, RELOCATE OR REPLACE THESE COMPONENTS AS REQUIRED.
5. MAINTAIN CIRCUIT CONTINUITY TO ALL EXISTING ELECTRICAL SYSTEM COMPONENTS IN AREAS NOT BEING REMODELED UNLESS OTHERWISE NOTED. PROVIDE ALL CONDUIT AND WIRING EXTENSIONS NECESSARY TO ACHIEVE SAME.
6. THE ELECTRICAL CONTRACTOR SHALL CLOSELY COORDINATE ALL ELECTRICAL DEMOLITION WORK WITH THE GENERAL AND MECHANICAL CONTRACTORS, AND SHALL DISCONNECT ALL REQUIRED CIRCUITS IN A TIMELY MANNER.
7. CONTACT THE ENGINEER IF A QUESTION SHOULD ARISE CONCERNING THE STATUS OF ANY OUTLET, DEVICE, LIGHTING FIXTURE, ETC.

POWER PLAN DEMO CODED NOTES:

1. EXISTING ELECTRICAL DEVICES IN THIS ROOM SHALL REMAIN.
2. REMAINING LOADS ON PANELBOARD "RH12" AFTER DEMOLITION HAS COMPLETED SHALL BE RE-FED BY AVAILABLE CIRCUITS IN PANELBOARDS "RF11CR" AND "LF11CR" IN ELECTRICAL ROOM 1B-17B. PROVIDE NEW AND/OR REPLACE EXISTING CIRCUIT BREAKERS AS NECESSARY TO RECONNECT CIRCUITS COMPLETE. FOR BIDDING PURPOSES, ASSUME A MAXIMUM OF 42 AMPERS REQUIRE RECONNECTION. REFER TO NEW POWER PLAN, ONE-LINE DIAGRAM, AND BRANCH CIRCUIT RECONNECTION TABLE FOR ADDITIONAL INFORMATION AND WORK REQUIREMENTS.
3. RELOCATE EXISTING FURNITURE FEED. VERIFY NEW LOCATION WITH VAMC COTR. REFER TO PARTIAL FIRST FLOOR POWER PLAN FOR ADDITIONAL INFORMATION AND WORK REQUIREMENTS.
4. REMOVE EXISTING 120V CIRCUIT CONDUIT AND CONDUCTORS FOR PNEUMATIC TUBE STATION COMPLETE BACK TO SOURCE.
5. APPROXIMATE LOCATION OF EXISTING EXHAUST FAN LOCATED ON ROOF. EC SHALL DISCONNECT EXHAUST FAN AND REMOVE EXISTING FEEDER COMPLETE BACK TO SOURCE. MC SHALL REMOVE EXHAUST FAN.
6. APPROXIMATE LOCATION OF EXISTING VAV BOXES TO BE REMOVED. COORDINATE EXACT LOCATION WITH MC. EC SHALL DISCONNECT VAV BOX COMPLETE. MAINTAIN CIRCUIT CONTINUITY TO VAV BOXES THAT ARE EXISTING TO REMAIN. VAVS THAT ARE EXISTING TO REMAIN ARE NOT SHOWN. MC SHALL REMOVE VAV BOX.
7. REMOVE EXISTING FURNITURE FEED COMPLETE BACK TO SOURCE.

FULLY SPRINKLERED

		CONSULTANTS:				ARCHITECT:		Drawing Title PARTIAL FIRST FLOOR POWER DEMOLITION PLAN		Project Title RENOVATE MENTAL HEALTH CLINIC		Project Number 541-13-101		<div>Office of Facilities Management</div> <div>Department of Veterans Affairs</div>	
												Building Number 1			
												Drawing Number			
												1-E5			
												Dwg. of			
Addendum No. 2		 FREDRICK, FREDRICK & HELLER ENGINEERS, INC. 672 EAST ROYALTON ROAD BROADVIEW HTS, OHIO 44147 TEL. (440) 546-9696 FAX (440) 546-9699		 BARBER & HOFFMAN, INC. <i>Consulting Engineers</i> 1100 West 9th Street Cleveland, OH 44113-1003 216-875-0100 (F) 216-875-0111 barberhoffman.com		 11038		 13212 Shaker Square Suite 204 Cleveland, Ohio 44120 P. 216.752.1800 F. 216.752.3833		DESIGN AND CONSTRUCTION DOCUMENTS AS INSTRUMENTS OF SERVICE ARE GIVEN IN CONFIDENCE AND REMAIN THE PROPERTY OF PERSPECTUS ARCHITECTURE. THE USE OF THIS DESIGN AND THESE CONSTRUCTION DOCUMENTS FOR ANY PROJECT OTHER THAN THAT FOR WHICH PROJECT NAMED HEREIN IS STRICTLY PROHIBITED WITHOUT THE EXPRESSED WRITTEN CONSENT OF PERSPECTUS ARCHITECTURE.		Approved: Project Director		Location VAMC - WADE PARK	
Addendum No. 1										Date 4-26-12		Checked MPL		Drawn CPC	
Final For Bid															
Revisions:		Date													