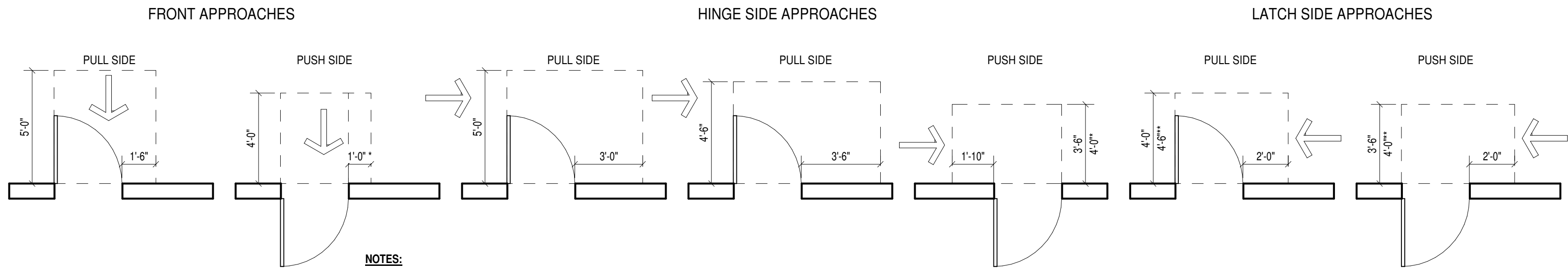


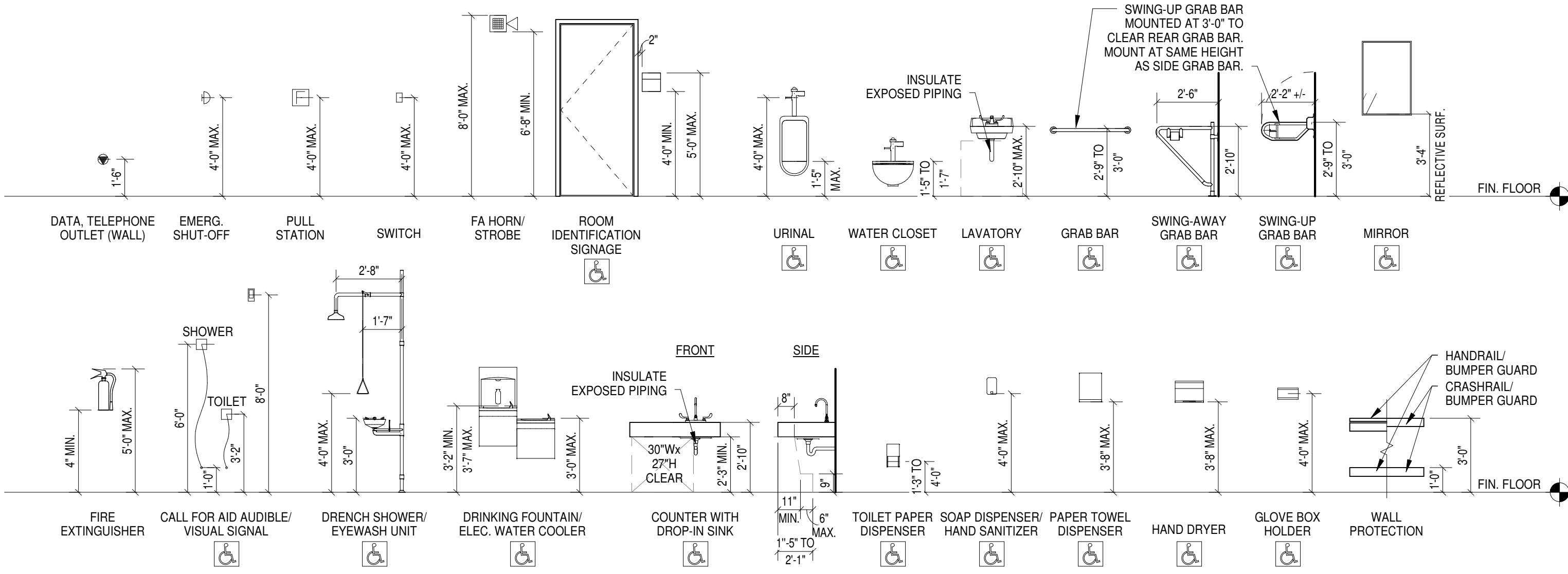
List of Abbreviations

A	AIR	L	LENGTH
AC	AIR CONDITIONING	LAM	LAMINATE(D)
ABV	ADJUSTABLE	LAV	LAVATORY
ADJ	ADJUSTABLE	LOC	LEAD-COATED COPPER
AF	AIR HANDLING UNIT	LT	LOW POINT
AH	ALTERNATE	LT	LIGHT
ALT	ALTERNATE	LTL	LINTEL
ALUM	ALUMINUM	LTV	LOUVER
ANOD	ANODIZED	LVT	LUXURY VINYL TILE
APPROX	APPROXIMATE	MANUF	MANUFACTURE(D)(R)
ARCH	ARCHITECTURAL	MAS	MASONRY
AT	ACOUSTIC CEILING TILE	MAX	MAXIMUM
AVB	AIR VAPOR BARRIER	MB	MARKER BOARD
AWP	ACOUSTIC WALL PANEL	MECH	MECHANICAL
		MEMB	MEMBRANE
B/S	BOTH WAYS	MFG	MANUFACTURING
BD	BOARD	MH	MECHANICAL HOOD
BIT	BITUMINOUS	MHK	MOP HOOK
BLDG	BUILDING	MIR	MIRROR
BLKG	BLOCKING	MISC	MISCELLANEOUS
BM	BEAM	MOLDING	MOLDING
BOT	BOTTOM	MO	MASONRY OPENING
BR	BRICK	MTL	METAL
BRG	BEARING	MULL	MULLION
BRZ	BRONZE		
BUR	BUILT-UP ROOFING		
		NAT	NATURAL
CAB	CABINET	NIC	NOT IN CONTRACT
CEM	CEMENT	NOM	NOMINAL
CG	CORNER GUARD	NTS	NOT TO SCALE
CG-F	CORNER GUARD FIRE RATED		
CHBD	CHALKBOARD	O2	OXYGEN
CI	CAST IRON	OA	OVERALL
CJT	CENTRAL JOINT	OC	OBSCURE
CL	CENTER LINE	OC	ON CENTER
CLG	CEILING	OD	OUTSIDE DIAMETER
CLOS	CLOSED	OPG	OPENING
CLR	CLEAR	OPP	OPPOSITE
CMU	CONCRETE MASONRY UNIT	ORD	OVERFLOW ROOF DRAIN
COL	COLUMN		
COMP	COMPOSITE(ION)	PERF	PERFORATED
CONC	CONCRETE	PLAM	PLASTIC LAMINATE
CONSTR	CONSTRUCTION	PLUMB	PLUMBER(ING)
CONTR	CONTRACTOR	PNT	PAINTED
CPRT	CARPET	PREFAB	PREFABRICATED
CPPT	CARPET TILE	PREFIN	PREFINISHED
CR	CRASH RAIL	PSI	POUNDS PER SQUARE INCH
CRS	COURSES	PT	POINT
CT	CERAMIC TILE	PTD	PAPER TOWEL DISPENSER
CTR	COUNTER	PTN	PARTITION
CU	CUBICLE CURTAIN	PTH	PAPER TOWEL RECEPTACLE
CVD	CUBIC YARD	PVC	POLYVINYL CHLORIDE
		PVMT	PAVEMENT
		PVR	PAVER
D	DRAIN	QT	QUARRY TILE
DEFS	DETACHED EXTERIOR FINISH SYSTEM		
DET	DETACHED	R	RISER
DF	DRINKING FOUNTAIN	RAD	RADIATION
DIA	DIAMETER	RAD	RADIATION
DIAZ	DIAZONAL	RUB	RUBBER
DM	DIMENSION	RD	ROOF DRAIN
DIR	DIRECTION(ION)	REF	REFERENCE
DISP	DISPENSER	REFR	REFRIGERATOR
DN	DOWN	REIN	REINFORCED(ING)
DR	DOOR	REMO	REMOVE
DUR	DURABLE	REQD	REQUIRED
DWG(S)	DRAWING(S)	RET	RETURN
DWR	DRAWER	REV	REVISION(ION)
		RFG	ROOFING
EA	EACH	RH	RIGHT HAND
ED	EDUCATIONAL	RM	ROOM
EF	EXHAUST FAN	RO	ROUGH OPENING
EIFS	EXTERIOR INSULATION FINISH SYSTEM	RT	RUBBER TILE
EL	ELEVATION	RWL	RAIN WATER LEADER
ELEC	ELECTRICAL		
ELEV	ELEVATOR	SC	SOLID CORE
EMERG	EMERGENCY	SCH	SCHEDULE
ENG	ENGINEERING(ING)	SD	SOAP DISPENSER
EQ	EQUIPMENT	SGT	STRUCTURAL GLAZED TILE
EQU	EQUIPMENT	SH	SHARPS CONTAINER
ERD	EMERGENCY ROOF DRAIN	SHT	SHEET
EW	ELECTRICAL WATER COOLER	SM	SIMILAR
EXIST	EXISTING	SKL	SKYLIGHT
EXP	EXPANSION	SND	SANITARY NAPKIN DISPENSER
EXP	EXPANDED	SNW	SANITARY NAPKIN WASTE
EXT	EXTERIOR	SQ	SQUARE
FA	FIRE ALARM	SS	STAINLESS STEEL
FD	FLOOR DRAIN	SSM	SOLID SURFACE MATERIAL
FEN	FOUNDATION	STR	SOAP TRAY-RECESSED
FE	FIRE EXTINGUISHER	STL	STEEL
FEC	FIRE EXTINGUISHER CABINET	STOR	STORAGE
FEC-R	FIRE EXTINGUISHER RECESSED	STRUCT	STRUCTURE(AL)
FEC-SR	FIRE EXTINGUISHER SEMI-RECESSED	SUSP	SUSPENDED
FIN	FINISH	SV	SHEET VINYL
FLG	FLASHING	SYS	SYSTEM
FLR	FLOORING		
FP	FIRE-PROOF(ING)	T&G	TONGUE AND GROOVE
FR	FRAME	TB	TACK BOARD
FRP	FIBER REINFORCED PANEL	TEL	TELEPHONE
FS	FULL SIZE	TEMP	TEMPERATURE
FT	FIRE-TREATED	TERM	TERMINATED(ION)
FTG	FOOTING	THK	THICKNESS
FUR	FURRING(ING)	THR	THRESHOLD
FUT	FUTURE	TLD	TILE
FVC	FIRE EXTINGUISHER AND VALVE CABINET	TPD	TOILET PAPER DISPENSER
FWC	FABRIC WALLCOVERING	TRANS	TRANSPARENT
		TUFFEX	TUFFEX
GA	GAGE, GAUGE	TYP	TYPICAL
GALV	GALVANIZED	TZ	TERRAZZO
GB	GRAB BAR		
GCB	GLOVE BOX HOLDER	UC	UNDERCOUNTER
GC	GENERAL CONTRACTOR	UNO	UNLESS OTHERWISE NOTED
GF	GROUND-FACE	V	VACUUM
GL	GLASS GLAZING	VB	VINYL COMPOSITE TILE
GWB	GYPSUM WALL BOARD	VCT	VERTICAL
		VERT	VERTICAL
HC	HOLLOW CORE	VER	VERIFY IN FIELD
HD	HAND DRYER	VSF	VINYL SHEET FLOORING
HDW	HARDWARE	VSF-H	VINYL SHEET FLOORING - HYBRID RESILIENT
HK	HANDSOME HOOK	VWC	VINYL WALL COVERING
HM	HOLLOW METAL		
HORIZ	HORIZONTAL	W	WIDE, WIDTH
HP	HIGH POINT	W	WITH
HPDL	HIGH DENSITY PLASTIC LAMINATE	WO	WITHOUT
HPL	PLASTIC RESIN DECORATIVE PANEL	WO	WOOD
HR	HANDRAIL	WG	WIRE GLASS
HS	HAND SANITIZER	WIN	WINDOW
HT	HEIGHT	WMF	WELDED WIRE FABRIC
HTG	HEATING	WP	WALL PROTECTION
HVAC	HEATING, VENTILATING, AIR CONDITIONING	WPH	WALL PROTECTION - HYGENIC SHEETS
		WP-WD	WASTE RECEPTACLE
IB	INTEGRAL BASE	WS	WIRE SHELVING
ID	INSIDE DIAMETER	WSM	WIRE SHELVING WITH WELDED SEAMS
INCL	INCLUDE(ING)	WTF	WELDED WIRE MESH
INFO	INFORMATION		
INSUL	INSULATION(ION)		
INT	INTERIOR		
JTS	JOINT(S)		

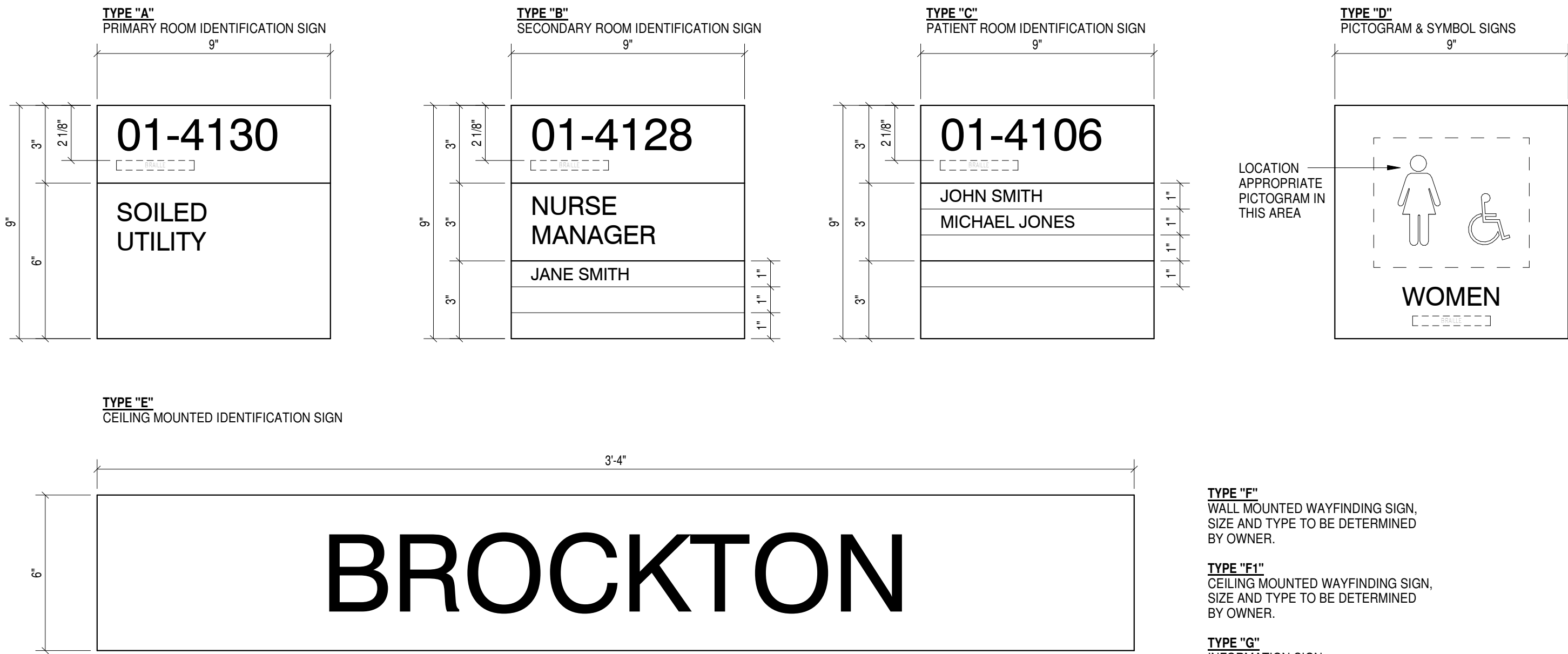
Door Clearances



Mounting Heights



Signage



BROCKTON

List of Drawings

GENERAL	Cover Sheet
G0.0	List of Drawings, Abbreviations, Door Clearances and Mounting Heights
G1.0	Level 1 Code/Egress Plan and Information
G1.2	Level 2 Code/Egress Plan
CIVIL	Site/Civil General Notes & Legend
C1.0	Existing Conditions Plan
C1.1	Site Demolition Plan
C1.2	Site Layout Plan
C1.3	Site Grading & Utilities
C1.4	Landscape Plan
C3.0	Construction Details
C3.1	Construction Details
ABATEMENT	Sub-Basement Asbestos Survey Plan
ASB1.0A	Basement Asbestos Survey Plan
ASB1.0	Level 1 Asbestos Survey Plan
ASB1.1	Level 2 Asbestos Survey Plan
ASB1.2	Level 3 Asbestos Survey Plan
ASB1.3	Level 3 Asbestos Survey Plan
DEMOLITION	Level 1 and Partial Basement Removal Plan
AD1.0	Level 2 Removal Plan
AD1.2A	DEDUCT ALTERNATE Level 2 Removal Plan
AD1.3	Level 3 Removal Plan
ARCHITECTURAL	3D Views
A0.0	Level 1 Floor Plan, Partial Basement Plan and Wall Types
A1.1	Level 2 Floor Plan
A1.2	DEDUCT ALTERNATE Level 2/Roof Plan
A1.2A	Level 3/Roof Plan
A2.1	Building Elevations and Sections
A2.1A	DEDUCT ALTERNATE Building Elevations and Sections
A3.1	Wall Sections
A3.2	Sections and Details
A4.1	Enlarged Floor Plans - Level 1
A4.2	Enlarged Floor Plans - Level 2
A5.1	Door Schedule and Details
A6.1	Plan Details - Level 1
A6.2	Plan Details - Level 2
A6.3	Miscellaneous Details
A6.4	Interior Elevations
A7.1	Interior Elevations
A7.2	Interior Elevations
A7.3	Interior Elevations
A8.1	Level 1 and Partial Basement Reflected Ceiling Plan
A8.2	Level 2 Reflected Ceiling Plan and Typical Ceiling Details
A9.1	Millwork Details
FINISHES	Cover Sheet
F1.0	Finish Schedule
F1.1	Level 1 Floor Pattern / Finish Plan
F1.2	Level 2 Floor Pattern / Finish Plan
FURNITURE and EQUIPMENT	Furniture and Equipment Floor Plans - Level 1
FE1.1	Furniture and Equipment Floor Plans - Level 2
FE1.2	Furniture and Equipment Floor Plans - Level 2
STRUCTURAL	Cover Sheet / Design Data
S1.0	Level 1 Foundation Plan
S1.1	Level 2 Floor Framing Plan
S1.2	Level 3 Roof and Penthouse Framing Plan
S2.0	Typical Foundation Details
S2.1	Foundation Details
S2.2	Foundation Details
S2.3	Foundation Details
S3.1	Framing Details
S3.2	Framing Details
S3.3	Framing Details
S4.0	Moment Frame Elevations and Typical Framing Details
S5.1	Column Schedule, Typical Details and Base Plate Details
FIRE PROTECTION	Fire Protection Legend, Schedule, Details & Notes
FP0.0	Level 1 Fire Protection Plan
FP1.0	Level 2 Fire Protection Plan
FP1.02	Level 2 Fire Protection Plan
FP2.00	Fire Protection Riser Schematics
PLUMBING	Plumbing Legend, Schedule, Details, Notes & Specifications
P0.00	Plumbing Underground Plan
P1.00	Level 1 Plumbing Plan
P1.01	Level 2 Plumbing Plan
P1.02	Level 2 Plumbing Plan
P1.03	Roof Deck Level Plumbing Plan
P2.00	Plumbing Riser Schematics
P2.01	Plumbing Basement
HVAC	HVAC Legend & General Notes
H0-01	HVAC Schedules
H0-02	HVAC Piping Schematic Diagram
H0-03	HVAC Details
H0-04	HVAC Details
H0-05	HVAC Details
H0-06	HVAC Details
H0-07	HVAC Details
H1.01	HVAC Level 1 Ductwork Plan
H1.02	HVAC Level 2 Ductwork Plan
H1.03	HVAC Roof Ductwork Plan
H1.03A	HVAC Ductwork Alternate Roof Ductwork Plan
H2.00	HVAC Basement Piping Plan
H2.01	HVAC Level 1 Piping Plan
H2.02	HVAC Level 2 Piping Plan
H2.03	HVAC Roof Piping Plan
H2.03A	HVAC Ductwork Alternate Roof Piping Plan
H3.00	HVAC Control Legend
H3-01	HVAC Control Diagrams and Sequences
H3-02	HVAC Control Diagrams and Sequences

List of Drawings

ELECTRICAL	Electrical Legend and General Notes
E0.00	Electrical Site Plan and Details
E0.01	Electrical Site Details
E0.02	Electrical Site Details
E1.00	Electrical Lighting Level 1 Plan
E1.01	Electrical Lighting Level 2 Plan
E2.00	Electrical Power Level 1 Plan
E2.01	Electrical Power Level 2 Plan
E2.02	Electrical Power Roof Plan
E2.03	Electrical MRI Room Equipment Plan
E2.04	Electrical CT Scan Room Equipment Plan
E2.05	Electrical Mammography/X-Ray Equipment Plans
E3.00	Electrical Low Voltage/Signal Level 1 Plan
E3.01	Electrical Low Voltage/Signal Level 2 Plan
E4.00	Electrical Power Riser and Schedules
E4.01	Electrical Campus One-Line
E4.02	Electrical Low Voltage/Signal Risers
E5.00	Electrical Schedules
E5.01	Electrical Schedules
E6.00	Electrical Details
E6.01	Electrical Details
FIRE ALARM	Fire Alarm Legend, General Notes, Risers and Details
FA0.00	Fire Alarm Level 1 Plan
FA1.01	Fire Alarm Level 2 Plan
Grand total:	114

List of Vendor Drawings

CT SCAN - NOTE: THESE DRAWINGS ARE FOR REFERENCE ONLY. CONTRACTOR IS RESPONSIBLE FOR INFORMATION CONTAINED IN THESE DRAWINGS. SITE SPECIFIC DRAWINGS WILL BE PROVIDED PRIOR TO CONSTRUCTION.	C1	Cover Sheet
	GN	General Notes
	A1	Equipment Layout/Scatter Radiation Field
	A2	Equipment Elevations
	S1	Structural Layout and Details
	S2	Anchoring/Bolt Force Details
	E1	Electrical Layout/Electrical Schematic
	E2	Electrical Schedules/Minimum Site Requirements
	E3	Electrical Duct Details
	E4	Electrical Riser Diagram (for internal use only)
MRI - NOTE: THESE DRAWINGS ARE FOR REFERENCE ONLY. CONTRACTOR IS RESPONSIBLE FOR INFORMATION CONTAINED IN THESE DRAWINGS. SITE SPECIFIC DRAWINGS WILL BE PROVIDED PRIOR TO CONSTRUCTION.	G-000	Cover Sheet
	A-101	Equipment Plan - Details, Legend and Notes
	A-102	Safety/Service Clearance Plan
	S2.1	Foundation Details
	S2.2	Foundation Details
	S2.3	Foundation Details
	S3.1	Framing Details
	S3.2	Framing Details
	S3.3	Framing Details
	S4.0	Moment Frame Elevations and Typical Framing Details
	M-101	Mechanical Plan - Chilled Water and Environmental
	M-501	Quench Vent Specifications
RADIOLOGY - NOTE: THESE DRAWINGS ARE FOR REFERENCE ONLY. CONTRACTOR IS RESPONSIBLE FOR INFORMATION CONTAINED IN THESE DRAWINGS. SITE SPECIFIC DRAWINGS WILL BE PROVIDED PRIOR TO CONSTRUCTION.	GE1.1	GE Discovery Radiology
Grand total:	31	

Signage General Notes:

- ALL ROOM AND TOILET IDENTIFICATION SIGNS TO BE LOCATED ON LATCH SIDE OF DOOR PER TYPICAL ROOM IDENTIFICATION MOUNTING DIAGRAM SHEET G0.1, UNLESS SPECIFICALLY CALLED OUT AND NOTED ON FLOOR PLAN SHEETS A1.1-A1.4 OR INTERIOR ELEVATIONS SHEETS A7.1-A7.4.
- SIGNAGE SHOULD BE NON-GLARE ACRYLIC FRAME CONSTRUCTION, COLORS TO BE SELECTED BY OWNER. FONT TO BE RAISED WHITE LETTERS, HELVETICA BOLD FONT WITH GRADE II BRAILLE JUSTIFIED BELOW. SIGNAGE WILL BE TAPE AND SILICON MOUNTED TO WALL.
- SIGNAGE TYPES ARE GENERAL IN NATURE. ALL SIGNAGE TO MEET VA SIGNAGE DESIGN GUIDE STANDARDS COMPLIED BY THE DEPARTMENT OF VETERANS AFFAIRS. INFORMATION CAN BE FOUND ON THE WEBSITE AT <http://www.dva.gov/va>. SPECIFIC COLORS, STYLE, TEXT, AND LOCATIONS TO BE COORDINATED WITH OWNER.
- FOR SIGNAGE LOCATIONS, TEXT, AND ADDITIONAL INFORMATION SEE SIGNAGE SCHEDULE IN SPECIFICATIONS.
- COORDINATE WITH OWNER FOR FINAL ROOM NUMBER AND ROOM IDENTIFICATION DESIGNATIONS.
- COORDINATION WITH THE OWNER FOR WAYFINDING SIGNAGE REQUIREMENTS.

100% CONSTRUCTION DOCUMENT SUBMISSION
"FULLY SPRINKLERED"

1 - 100% CONSTRUCTION DOCUMENT SUBMISSION	04/08/2016
Revisions:	Date:

CONSULTANTS:

ARCHITECT/ENGINEERS:



moser
pilon
nelson
architects

30 JORDAN LANE
WETHERSFIELD, CT 06109
(860) 543-0164

Drawing Title
List of Drawings, Abbreviations, Door Clearances and Mounting Heights

Approved: Project Director

Project Title
BUILDING 3
MRI/CT Radiology Addition
Boston Healthcare System - Brockton Campus

Location
940 Belmont Street Brockton, MA 02301

Date
02/12/2016

Checked
JB

Drawn
SB

Project Number
523-398

Building Number
3

Drawing Number
G0.1

Dwg. 2 of 145

Office of
Facilities
Management



CODE Information

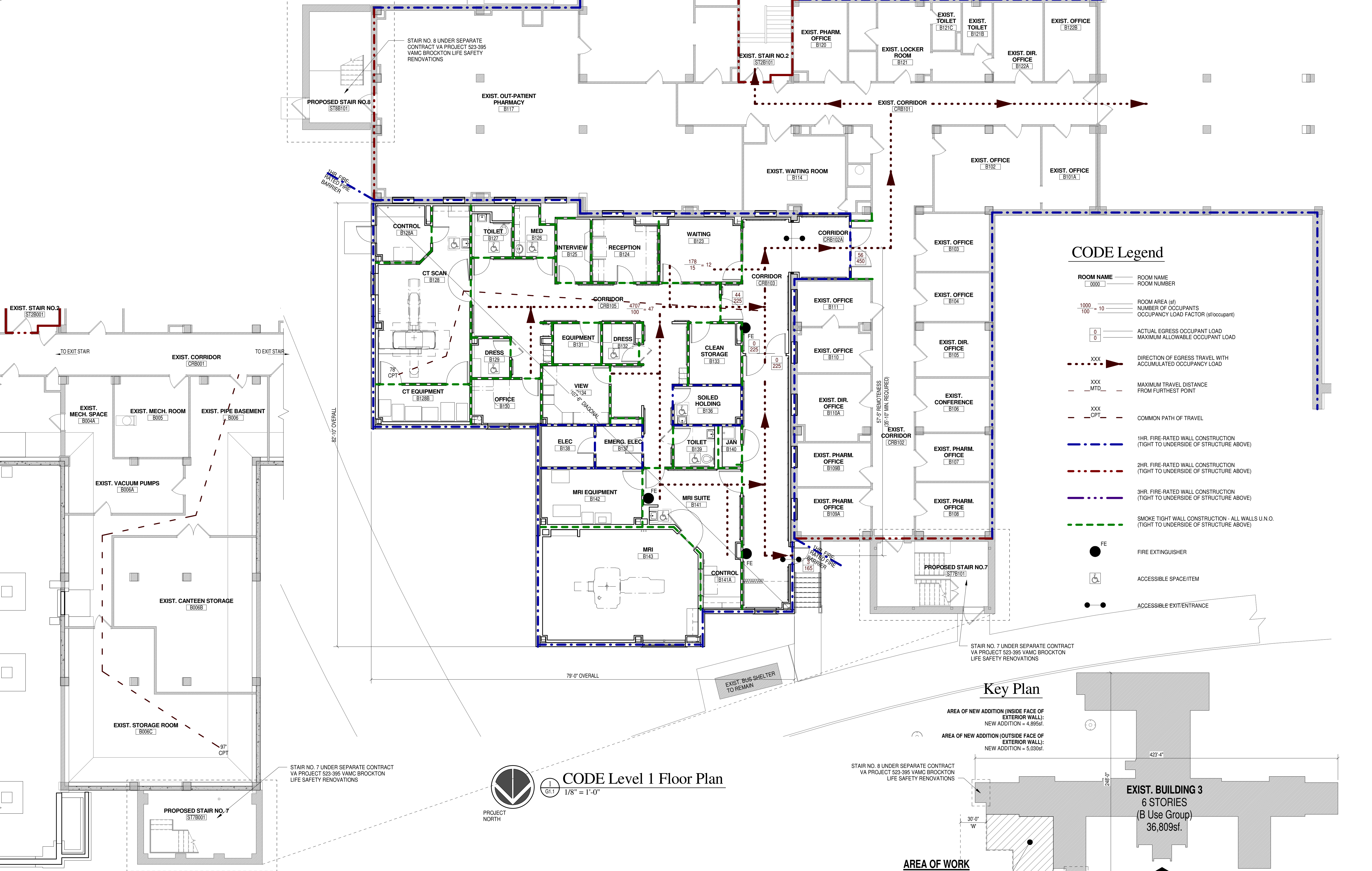
NEW BUILDING ADDITION	
1. GROUP CLASSIFICATION (Chapter 3)	
(Primary)	(IBC)
(Incidental)	(NFPA)
2. CONSTRUCTION TYPE (Chapter 6)	
Minimum Type Required	IV
Actual Type Provided (existing)	IV (2440)
(new)	IIA
3. BUILDING HEIGHT (Chapter 5)	
Allowable Height (stories/feet)	6/85
Actual Height (stories/feet)	6/85
Stories Above Grade	6
4. BUILDING AREA (Chapter 5)	
(Level 1)	
Existing Construction	36,899
New Construction	4,895
Total Floor Area (Level 1)	41,794
(Level 2)	
Existing Construction	36,899
New Construction	4,895
Total Floor Area (Level 2)	41,794
5. AREA MODIFICATIONS TO TABLE 503	
Total Perimeter =	423
Open Perimeter =	423
Total Frontage (F) =	1,342
Width of Open Space (W) =	30
If = [F/P - 0.25] W/30	
Frontage Increase (FI) =	75
Sprinkler Increase (SI) =	2
% of Allowable Tabular Area (At) (Table 503)	100%
% Frontage Increase (FI) (506.2)	75%
% Sprinkler Increase (SI) (506.3)	200%
Total percentage factor	375%
Conversion Factor	
(Total percentage factor / 100)	3.75

6. ALLOWABLE AREA (Chapter 5)	
Tabular Area (At)	37,500
Aa = [At x FI] + [(At x SI)]	
Allowable Area (Aa)	140,625
Actual Building Area (Largest Floor)	41,794
Case 1: Single Occupancy or Non-Separated Uses	
a) Adjusted Building Area	41,794
(actual building area)	
b) Allowable Area per floor (Aa)	3.75
(conversion factor)	
c) Actual Building Area	37,500
(Level 1)	
d) Total Actual Building Area (Entire Building)	41,794
e) Total Allowable Building Area (Entire Building)	201,647
(allowable area (Aa))	
(no. of stories)	6
Case 2: Mixed Occupancy Separated Uses (302.3.2) (Allowable Area 506.4)	N/A
7. FIRE-RESISTANCE RATED REQUIREMENTS FOR BUILDING ELEMENTS (Table 601 and 602)	
1. Primary Structural Frame	1
2. Bearing Walls	1
(Interior)	1
3. Nonbearing Walls and Partitions	1
(Exterior) < 4	1
> 4 to 10	1
> 10 to 30	1
> 30	0
4. Nonbearing Walls and Partitions	0
(Interior)	1
5. Floor Construction and Secondary Members	1
6. Roof Construction and Secondary Members	1
8. MEANS OF EGRESS (Chapter 10)	
Egress Width per Occupant (Section 1005.1)	3
(Stairways)	2
(Other Egress Components)	2
Design Total for Each Floor (Level 1)	427
(Level 2)	430
Design Total (Entire Building)	857
Total Exit Capacity for Each Floor (Level 1)	2,160
(Level 2)	1,152
Total Exit Capacity (Entire Building)	3,312
Maximum Allowable Travel Distance	300
Maximum Allowable Common Path of Travel	100
Maximum Allowable Dead End Corridor	50

9. MODIFICATIONS	
Modification Number	N/A
(Approved)	
(Not Approved)	
10. ACCESSIBLE BUILDING	
Designated	X
Non-Designated	
11. MINIMUM PLUMBING FIXTURE COUNT (Plumbing Code Chapter 4)	
Design Occupancy Load (Addition only)	121
Required	Provided
W/C Male	3
(Urinals)	3 (3 Total)
W/C Female	2
Laves Male	2
Laves Female	2
Bathrooms/Shower Male	0
Bathrooms/Shower Female	0
Drinking Fountains	2
Service Sinks	2
1 per floor	1 per floor
* EXISTING FIXTURES	
12. ENTIRE BUILDING SPRINKLERED	
Yes	X
No	
13. THRESHOLD BUILDING CONDITIONS	
Yes	X
No	
14. CODES TO WHICH THIS PROJECT WAS DESIGNED	
IBC 2009, 780 CMR 8th Edition 2009	
2009 NFPA 101	
2009 NFPA 1	
OSHA REGULATIONS (STANDARDS-29 CFR)	
ADA/ABA 2010, ABAAS 2006 VA SUPPLEMENT 2011	
IPC 2009, 248 CMR	
IECC 2009	

ENERGY CODE Information

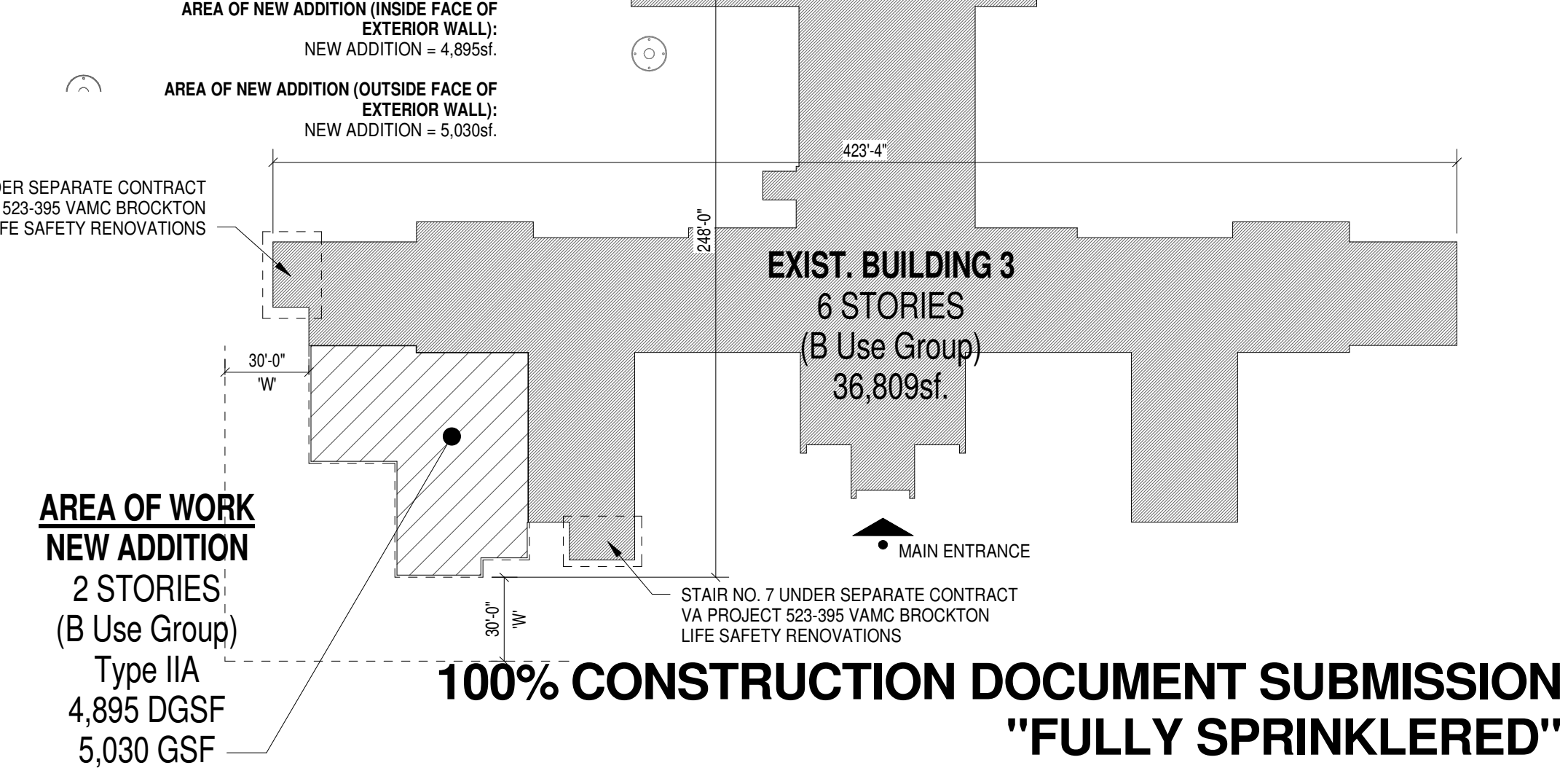
ADVANCED ENERGY DESIGN GUIDE FOR SMALL HOSPITALS and HEALTHCARE FACILITIES	
CLIMATE ZONE: 5	
Required	Provided
Roof - Insulation Entirely Above Deck	R-30ci
Walls - Mass	R-20
Slab on Grade - Unheated	R-15 for 24in.
Doors - Opaque Swinging	U-0.50
Fenestration	U-0.29



CODE Legend

ROOM NAME	ROOM NAME
ROOM NUMBER	ROOM NUMBER
ROOM AREA (sf)	ROOM AREA (sf)
NUMBER OF OCCUPANTS	NUMBER OF OCCUPANTS
OCCUPANCY LOAD FACTOR (sf/occupant)	OCCUPANCY LOAD FACTOR (sf/occupant)
ACTUAL EGRESS OCCUPANT LOAD	ACTUAL EGRESS OCCUPANT LOAD
MAXIMUM ALLOWABLE OCCUPANT LOAD	MAXIMUM ALLOWABLE OCCUPANT LOAD
XXX	DIRECTION OF EGRESS TRAVEL WITH ACCUMULATED OCCUPANCY LOAD
XXX	MAXIMUM TRAVEL DISTANCE FROM FURTHEST POINT
XXX	COMMON PATH OF TRAVEL
1HR. FIRE-RATED WALL CONSTRUCTION (TIGHT TO UNDERSIDE OF STRUCTURE ABOVE)	
2HR. FIRE-RATED WALL CONSTRUCTION (TIGHT TO UNDERSIDE OF STRUCTURE ABOVE)	
3HR. FIRE-RATED WALL CONSTRUCTION (TIGHT TO UNDERSIDE OF STRUCTURE ABOVE)	
SMOKE TIGHT WALL CONSTRUCTION - ALL WALLS U.N.O. (TIGHT TO UNDERSIDE OF STRUCTURE ABOVE)	
FE	FIRE EXTINGUISHER
ACCESSIBLE SPACE/ITEM	
ACCESSIBLE EXIT/ENTRANCE	

Key Plan



CODE Basement

CONSULTANTS:

ARCHITECT/ENGINEERS:

moser
pilon
nelson
architects



Drawing Title
Level 1 Code/Egress Plan and Information

Approved: Project Director

Project Title
BUILDING 3
MRI/CT Radiology Addition
Boston Healthcare System - Brockton Campus

Location
940 Belmont Street Brockton, MA 02301

Date
02/12/2016

Checked
JB

Drawn
SB

Project Number
523-398

Building Number
3

Drawing Number
G1.1

Dwg. 3 of 145

Office of
Facilities
Management



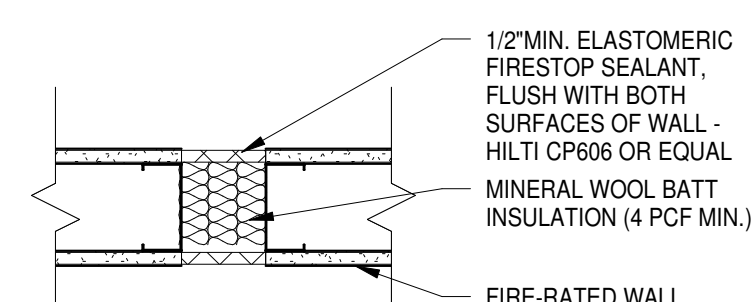
1 - 100% CONSTRUCTION DOCUMENT SUBMISSION
Revisions: 04/08/2016

Typ. Fire Safing Details

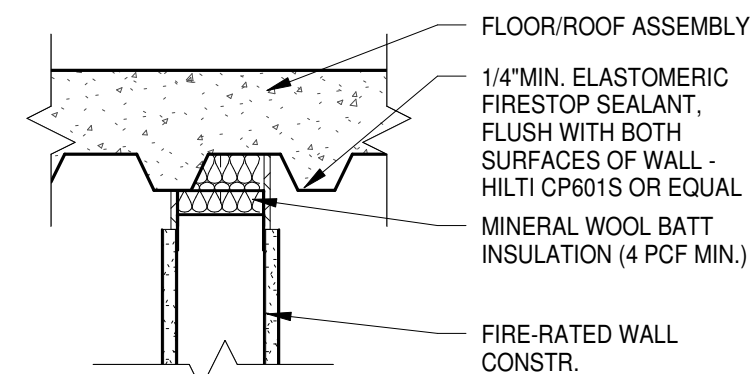
N.T.S.

GENERAL NOTES:

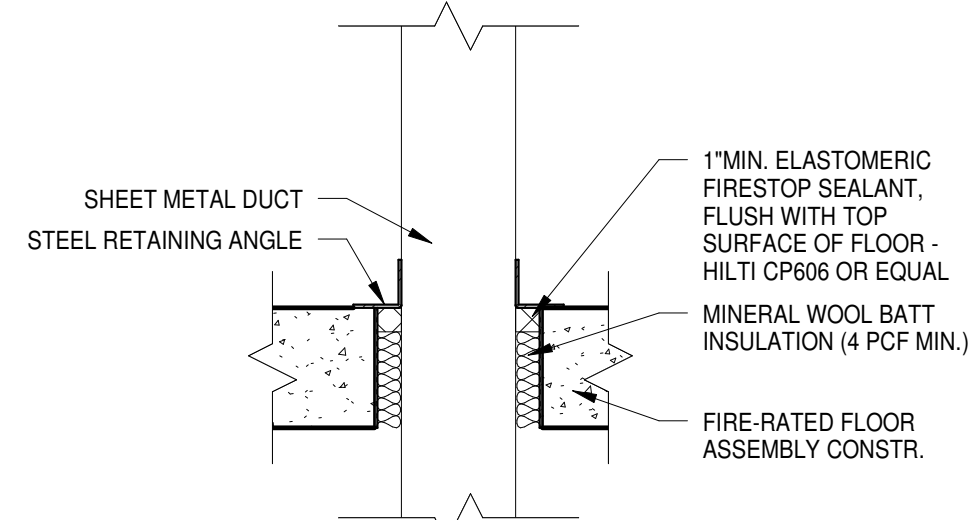
- SEE FLOOR PLANS AND CODE PLANS FOR LOCATIONS OF FIRE-RATED PARTITIONS AND SMOKE-TIGHT CONSTRUCTION.
- THE CONTRACTOR SHALL BE RESPONSIBLE FOR SEALING ALL TYPES OF OPENINGS AND PENETRATIONS IN ALL FIRE-RATED FLOORS, PARTITIONS AND SMOKE-TIGHT WALLS USING AN APPROVED ASSEMBLY.
- FIRE BARRIERS TO MEET REQUIREMENTS OF DETAIL 'D', SMOKE BARRIERS TO MEET THE REQUIREMENTS OF DETAIL 'E'.



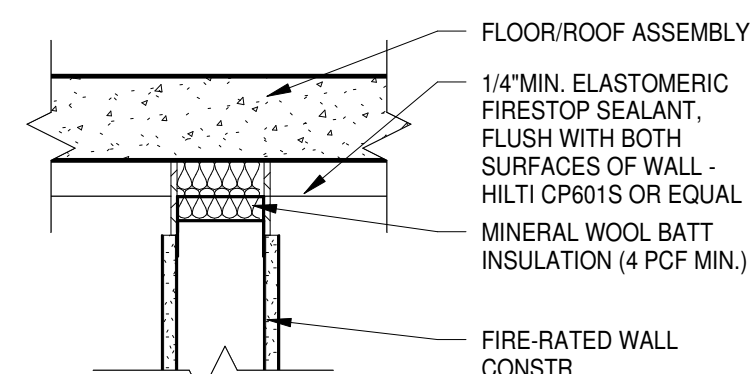
A JOINT AT RATED WALL
U.L. #WW-D-0067 (1HR. RATED)



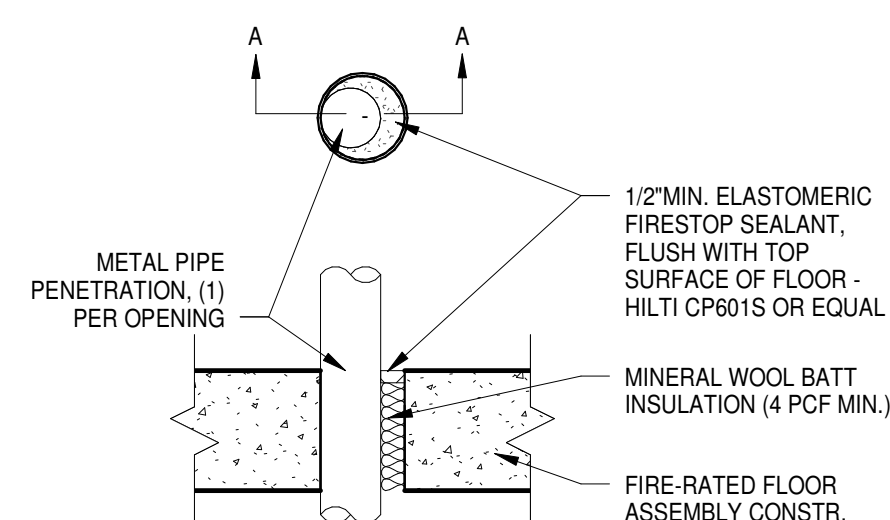
D TOP OF RATED WALL
U.L. #HW-D-0046 (1HR. RATED)



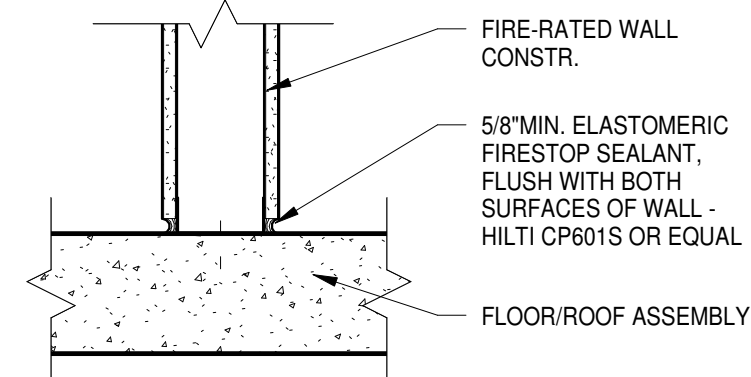
B DUCT PENETRATION
U.L. #CAJ-1051 (1HR. RATED)



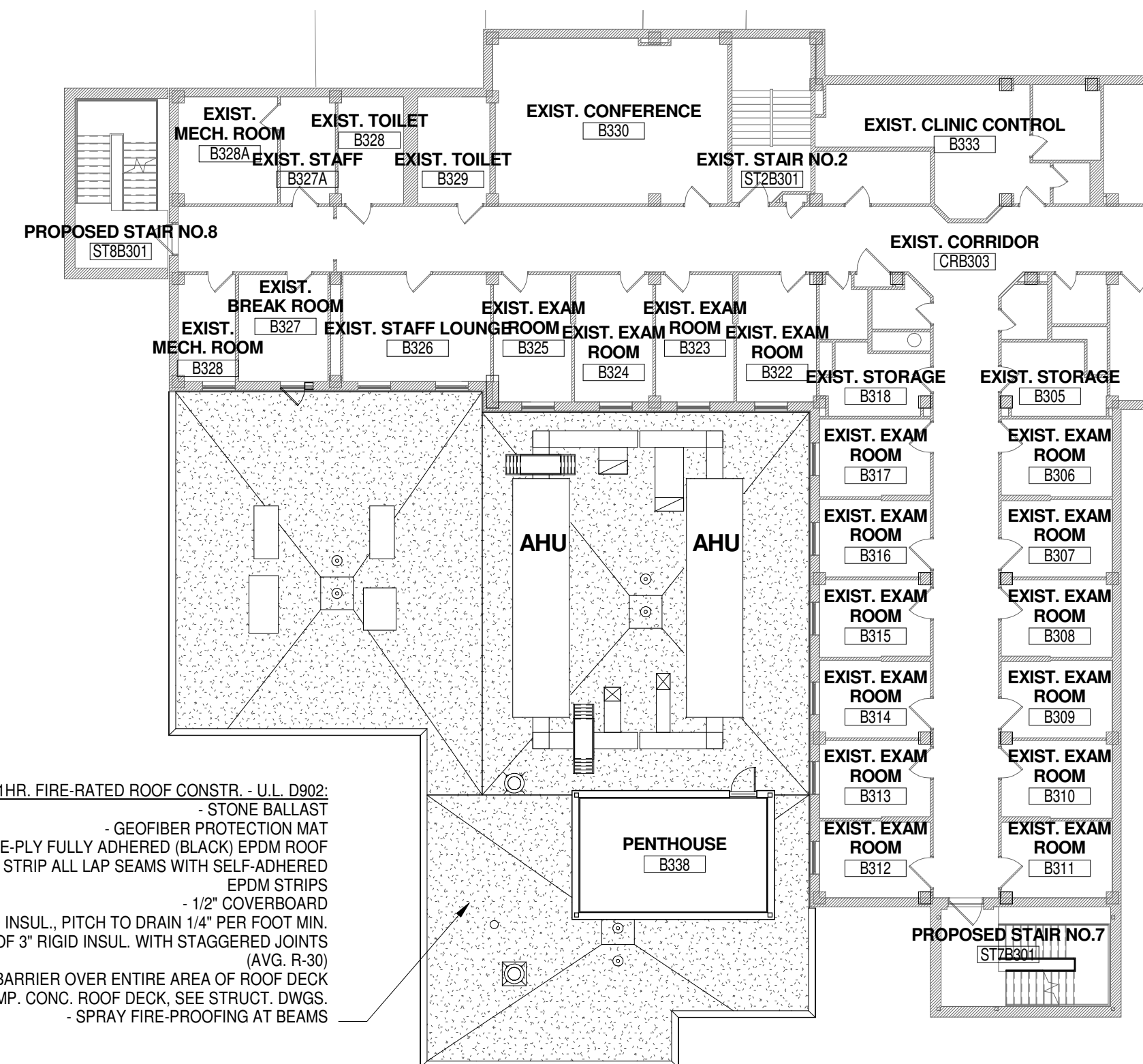
E PIPE PENETRATION AT WALL
U.L. #PW-L-1170 (1HR. RATED)



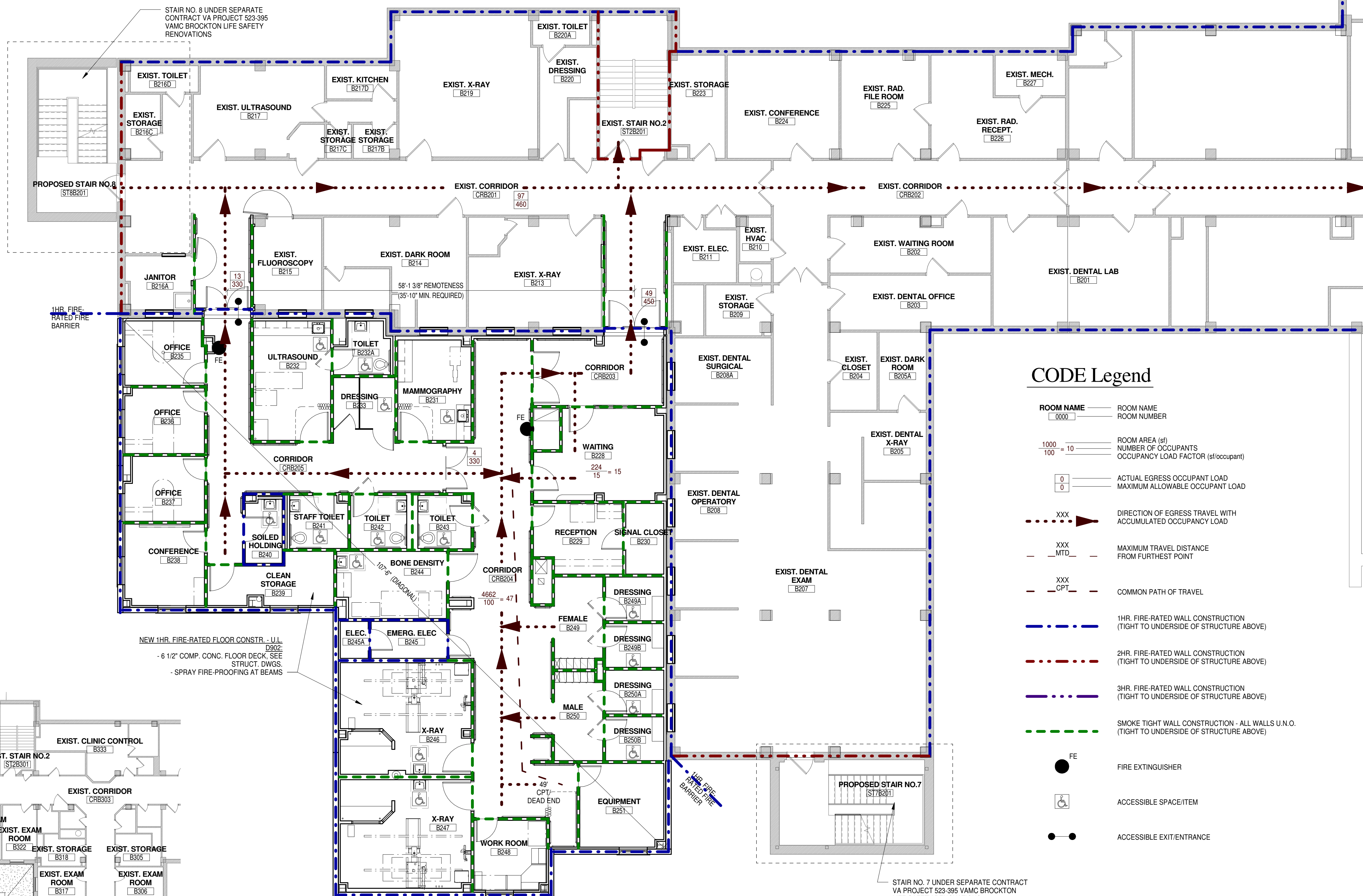
C PIPE PENETRATION AT FLOOR
U.L. #CAJ-1149 (2HR. RATED)



F BOTTOM OF RATED WALL
U.L. #BW-S-0001 (1HR. RATED)



CODE Level 3/Roof
1/16" = 1'-0"

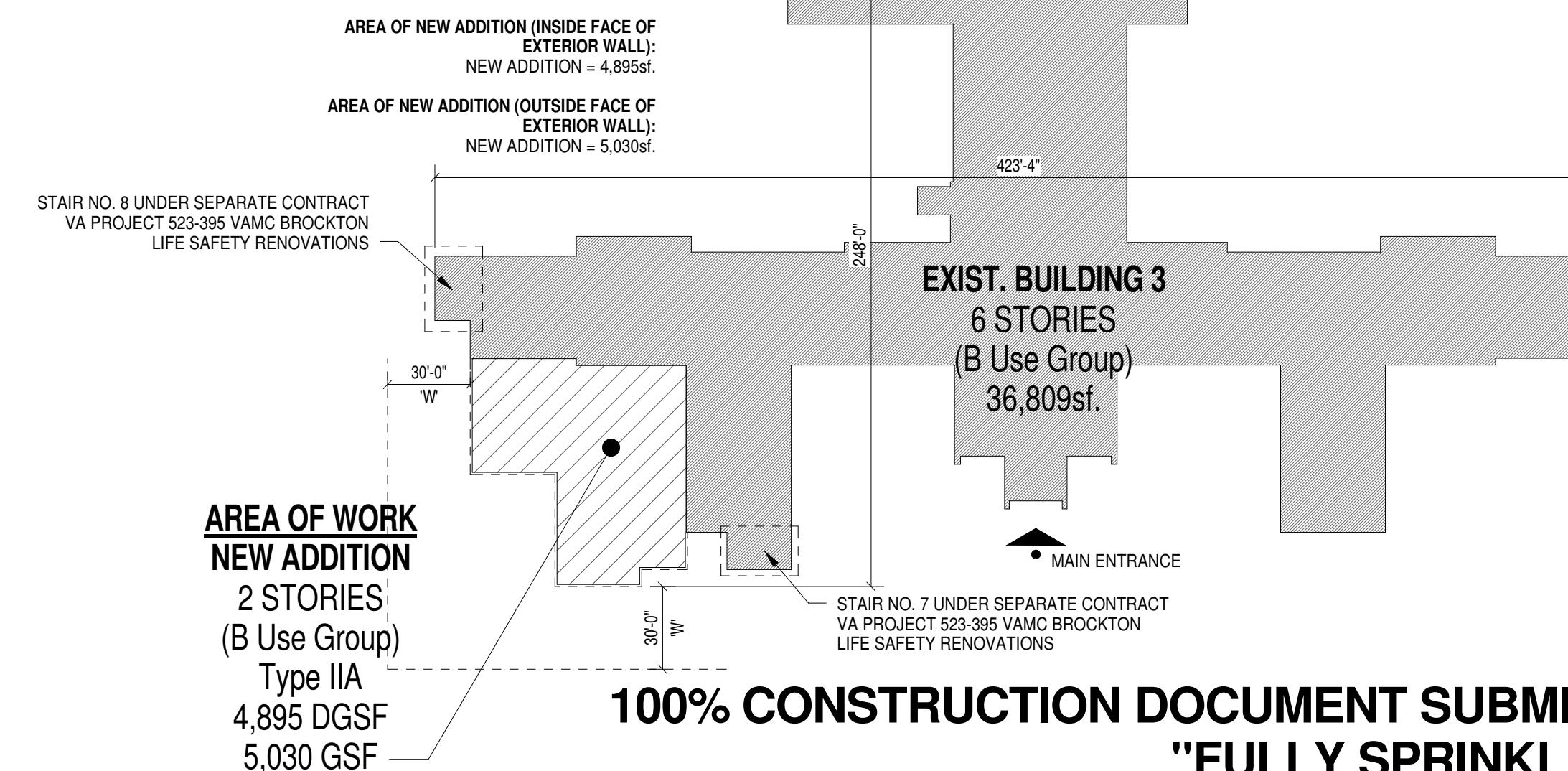


CODE Level 2 Floor Plan
1/8" = 1'-0"

CODE Legend

- | | |
|-----------|--|
| ROOM NAME | ROOM NAME |
| 0000 | ROOM NUMBER |
| -1000 | ROOM AREA (sq) |
| 100 | NUMBER OF OCCUPANTS |
| 0 | OCCUPANCY LOAD FACTOR (if occupant) |
| 0 | ACTUAL EGRESS OCCUPANT LOAD |
| 0 | MAXIMUM ALLOWABLE OCCUPANT LOAD |
| XXX | DIRECTION OF EGRESS TRAVEL WITH ACCUMULATED OCCUPANT LOAD |
| XXX | MAXIMUM TRAVEL DISTANCE FROM FURTHEST POINT |
| XXX | COMMON PATH OF TRAVEL |
| --- | 1HR. FIRE-RATED WALL CONSTRUCTION (TIGHT TO UNDERSIDE OF STRUCTURE ABOVE) |
| --- | 2HR. FIRE-RATED WALL CONSTRUCTION (TIGHT TO UNDERSIDE OF STRUCTURE ABOVE) |
| --- | 3HR. FIRE-RATED WALL CONSTRUCTION (TIGHT TO UNDERSIDE OF STRUCTURE ABOVE) |
| --- | SMOKE TIGHT WALL CONSTRUCTION - ALL WALLS U.N.O. (TIGHT TO UNDERSIDE OF STRUCTURE ABOVE) |
| FE | FIRE EXTINGUISHER |
| ♿ | ACCESSIBLE SPACE/ITEM |
| ● | ACCESSIBLE EXIT/ENTRANCE |

Key Plan



CONSULTANTS:

ARCHITECT/ENGINEERS:

moser
pilon
nelson
architects



Drawing Title
Level 2 Code/Egress Plan

Approved: Project Director

Project Title
BUILDING 3
MRI/CT Radiology Addition
Boston Healthcare System - Brockton Campus

Location
940 Belmont Street Brockton, MA 02301

Project Number
523-398
Building Number
3
Drawing Number
G1.2

Office of
Facilities
Management



1 - 100% CONSTRUCTION DOCUMENT SUBMISSION

04/08/2016

Revisions:

Date:

