

VA | Department of
Veterans Affairs

three eighths inch = one foot

one half inch = one foot

three quarters inch = one foot

one inch = one foot

one and one half inches = one foot

three inches = one foot

1

2

3

4

5

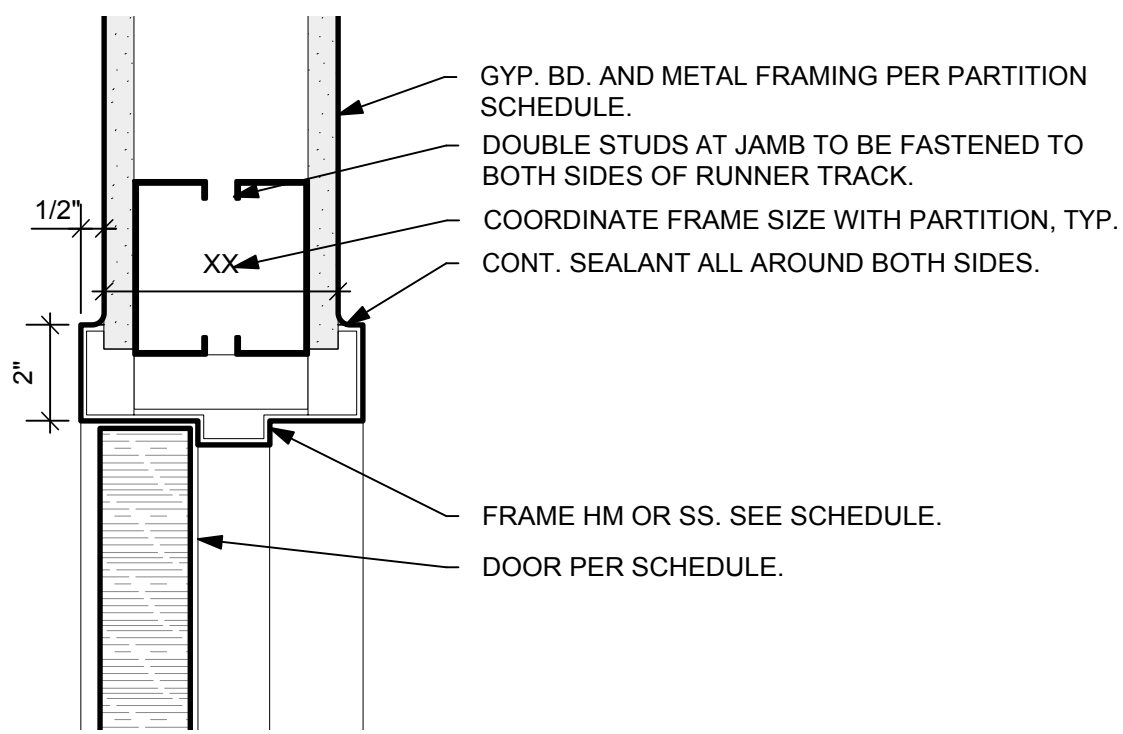
6

7

8

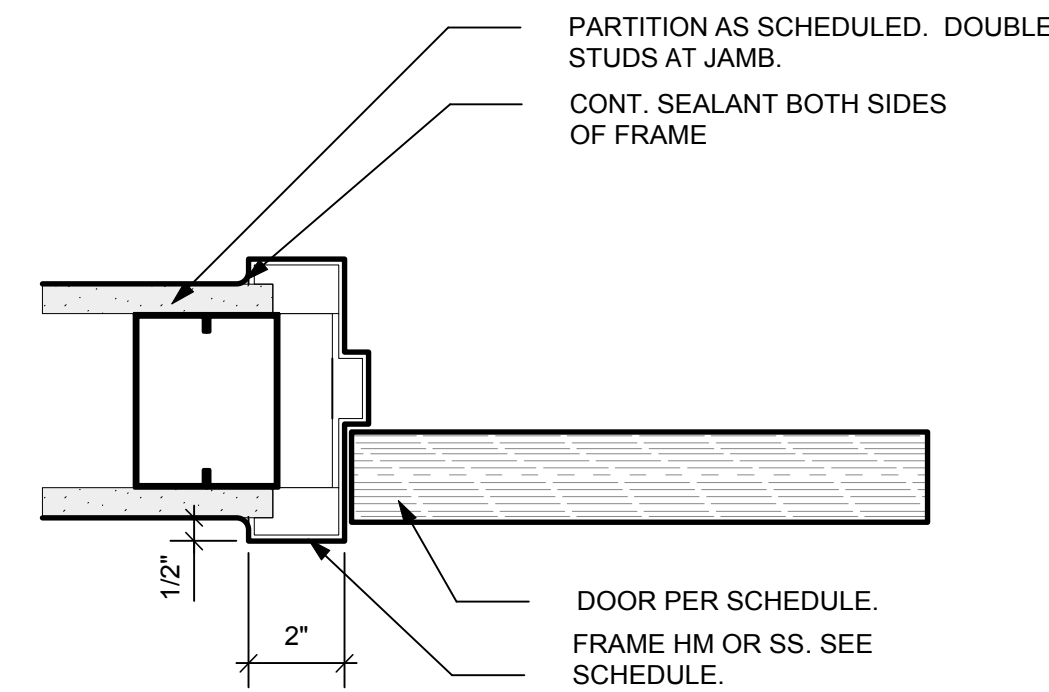
9

TYPICAL DETAILS



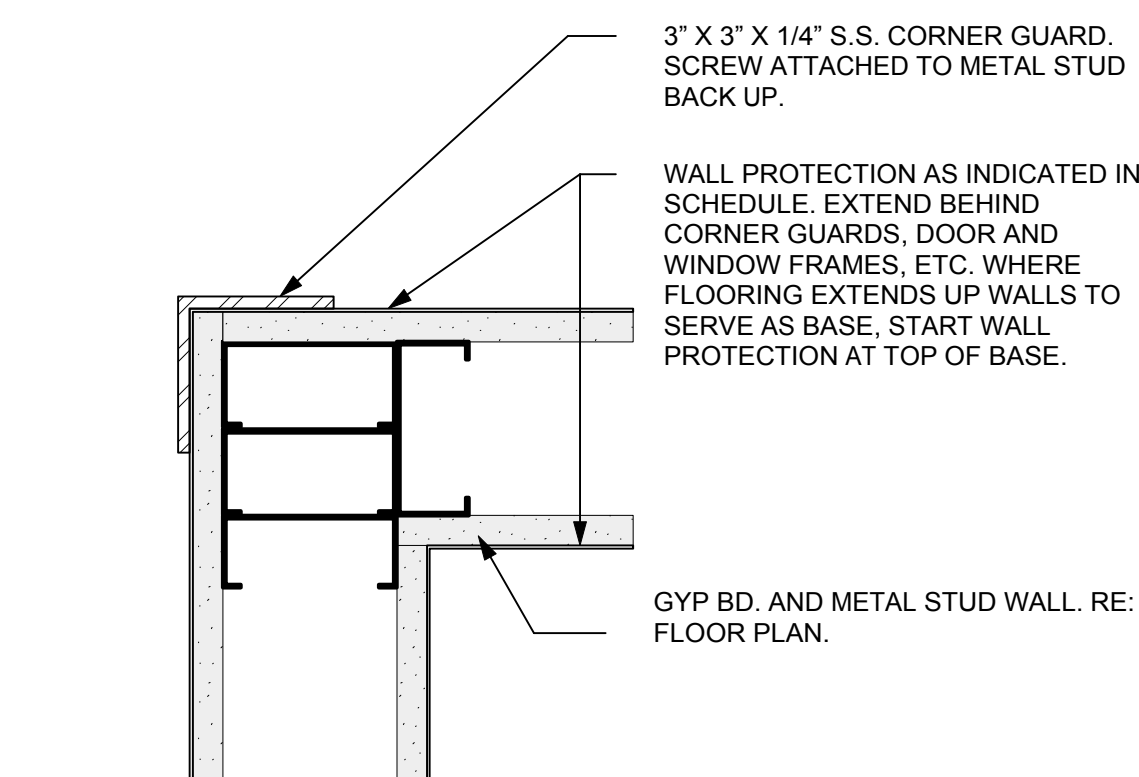
1 DOOR HEAD DETAIL

AF 610 Scale: 3" = 1'-0"



2 DOOR JAMB DETAIL

AF 610 Scale: 3" = 1'-0"



3 CORNER GUARD

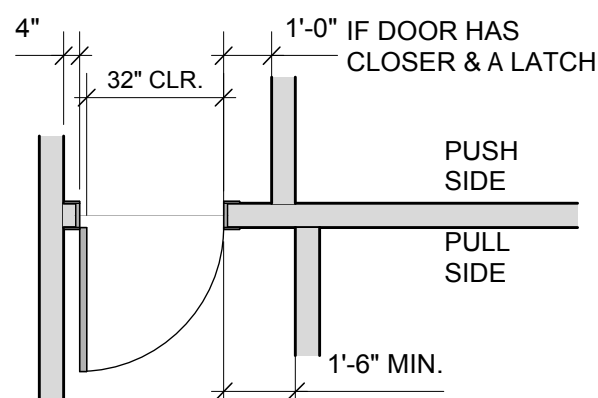
AF 610 Scale: 3" = 1'-0"

DOOR SCHEDULE LEGEND

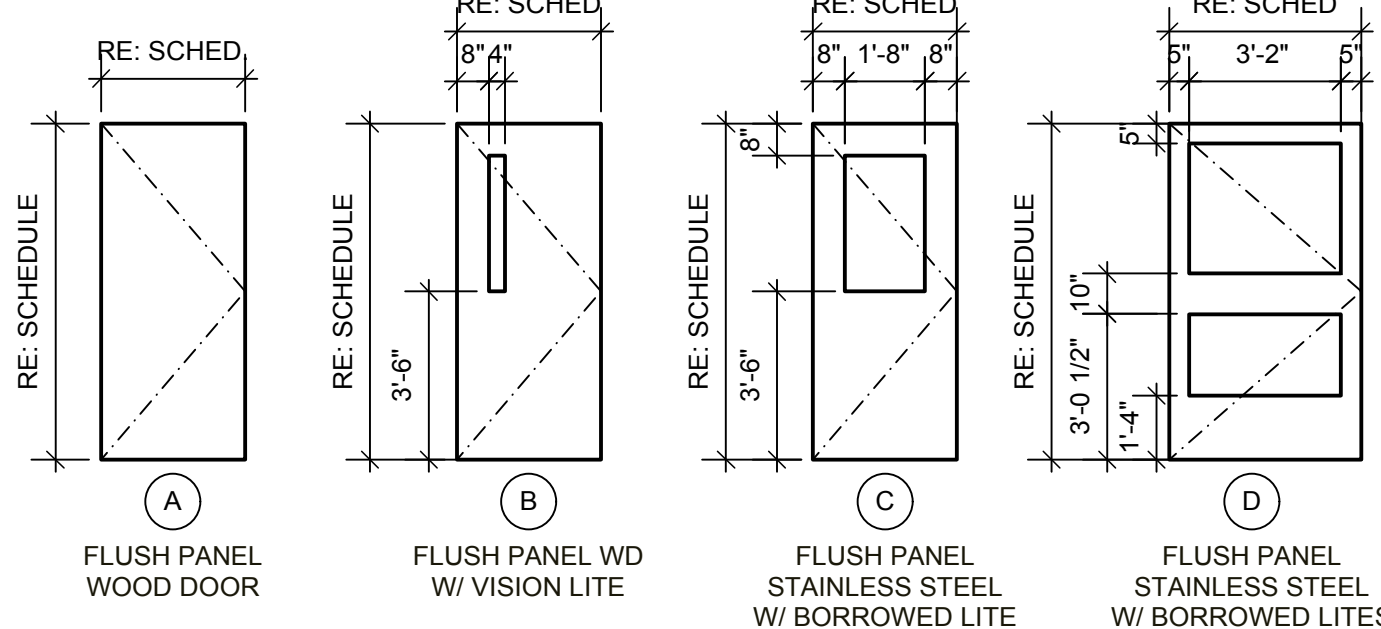
ABBREVIATIONS

GL	GLASS
HM	HOLLOW METAL
WD	WOOD
STL	STEEL
AL	ALUMINUM
MFR	MANUFACTURER
TEMP	TEMPERED
RTD	RATED
MTL	METAL
FS	FIRE/SMOKE RATING

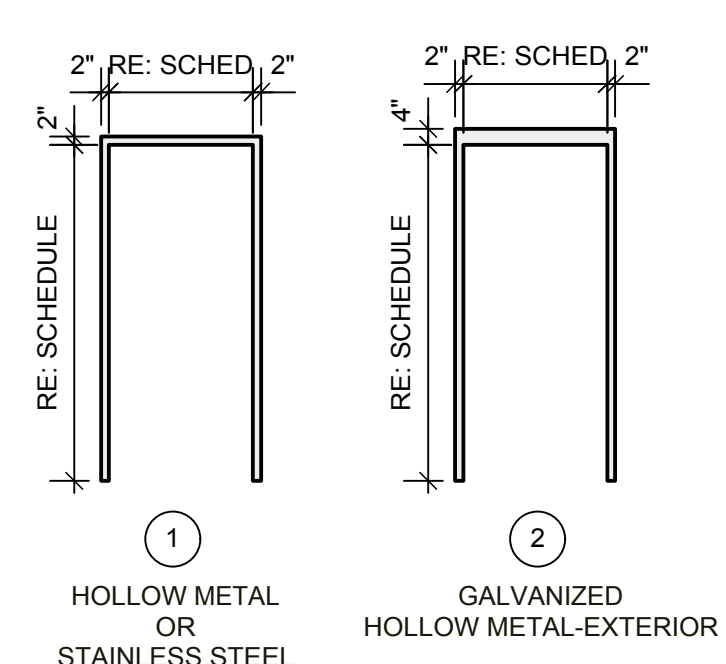
REMARKS LEGEND



DOOR TYPES



FRAME TYPES



ROOM FINISH SCHEDULE

NO.	ROOM	FLOOR	BASE	WALLS				CEILING	NOTES
				NORTH	EAST	SOUTH	WEST		
B006	OFFICE	V-2	BR-2	PT-2A	PT-2	PT-2	PT-2	AT-2	
B006G	CLOSET	V-2	BR-2	PT-2	PT-2	PT-2	PT-2	AT-2	
B006P	PIPE CLOSET	-	-	NONE	NONE	NONE	NONE	-	NO FINISH
B007	STORAGE	V-2	BR-2	PT-2	PT-2	PT-2	PT-2	GB-1	
B008	PREP / PACK	V-1	BR-1	PT-1WP-1	PT-2WP-1	PT-2WP-1	PT-2WP-1	GB-1	CLG PAINT PT-1 WHITE
B008A	VEST	V-1	BR-1	PT-1WP-1	PT-1WP-1	PT-1WP-1	PT-1WP-1	GB-1	CLG PAINT PT-1 WHITE.
B008C	CART WASH	NA	NA	NONE	NONE	NONE	NONE	-	
B009	STERILIZERS	V-1	BR-1	PT-1	PT-1	PT-1	PT-1	AT-1	
B010	R. O. WATER	V-2	BR-2	PT-1WP-1	PT-1	PT-1	PT-1WP-1	GB-1	
B011	VEST	V-1	BR-1	PT-1WP-1	PT-1WP-1	PT-1WP-1	PT-1WP-1	GB-1	
B011A	HKPG	V-2	BR-2	PT-1WP-1	PT-1WP-1	PT-1WP-1	PT-1WP-1	GB-1	
B012	DECONTAM	V-1	BR-1	PT-1WP-1	PT-1WP-1	PT-1WP-1	PT-1WP-1	GB-1	CLG PAINT PT-1 WHITE
B013	ANTE VESTHOLE	V-2	BR-1	PT-2	PT-2	PT-2	PT-2	GB-1	
B013A	F TLT/LKRS	V-2	BR-1	PT-1CT-1	CT-1	CT-1	CT-1	AT-1	GYP. BD. CEILING ABOVE SHOWERS
B013B	M. TLT/LKRS	V-2	BR-1	PT-1CT-1	CT-1	CT-1	CT-1	AT-1	GYP. BD. CEILING ABOVE SHOWERS
B013C	VEST	V-1	BR-1	PT-1WP-1	PT-1WP-1	PT-1WP-1	PT-1WP-1	GB-1	
B014M	MECH	NA	NA	NONE	NONE	NONE	NONE	-	
B42A	BIOMED SERVER ROOM	AF-1	BR-2	PT-1	PT-1	PT-1	PT-1	PT-1	
C-03A	EXT. CORRIDOR	MATCH VCT	BR-2	NONE	PT-2	PT-2	PT-2	-	NOTE 1 BELOW
C-03C	CORRIDOR	V-2	BR-2	PT-1	PT-1	PT-1	PT-1	AT-2	
C0-3B	CORRIDOR	V-2	BR-2	PT-1	PT-1	PT-1	PT-1	AT-2	
C0-3E	CORRIDOR	V-2	BR-2	PT-1	PT-1	PT-1	PT-1	AT-2	

ROOM FINISH SCHEDULE NOTES

1. AT SMALL AREA (4'X7 ±) NORTH OF NEW DOOR C0-3B, ADD GRID CEILING, TILE, PAINT AND VCT FLOOR TO MATCH EXISTING IN CORRIDOR C0-3A.

DOOR AND FRAME SCHEDULE

NO.		DOOR				FRAME				DETAILS				REMARKS
		ROOM	WIDTH	HT	THICK.	FIN.	TYPE	MTL	TYPE	MTL	FIN.	RATING	JAMB	
B006	OFFICE		3'0"	7'0"	1 3/4"		B	WD	1	HM		45 MINS		
B006G	CLOSET		2'6"	7'0"	1 3/4"		A	WD	1	HM		-		
B006PA	PIPE CLOSET		6'0"	7'0"	1 3/4"		A	WD	1	HM		-		
B006PB	PIPE CLOSET		2'2"	7'0"	1 3/4"		A	HM	1	HM		45 MINS		
B007H	STORAGE		3'0"	7'0"	1 3/4"		A	HM	1	HM		45 MINS		
B008	PREP/PACK		4'0"	7'0"	1 3/4"		C	SS	1	SS		45 MINS		
B008A	VEST		3'8"	7'0"	1 3/4"		D	SS	1	SS		45 MINS		POWER OPERATED. RE: ELECTRICAL DRAWINGS
B008B	VEST		3'8"	7'0"	1 3/4"		D	SS	1	SS		-		POWER OPERATED. RE: ELECTRICAL DRAWINGS
B008C	CART WASH				1 1/4"									DOOR IS PART OF CART WASH PACKAGE
B009	STERILIZERS		6'0"	7'0"	1 3/4"		A	HM	1	HM		45 MINS		
B010	R.O. WATER		3'0"	7'0"	1 3/4"		A	HM	1	HM		45 MINS		
B011A	HOUSEKEEPING		3'0"	7'0"	1 3/4"		A	HM	1	HM		-		
B011B	VEST		4'0"	7'0"	1 3/4"		D	SS	1	AL		45 MINS		POWER OPERATED. RE: ELECTRICAL DRAWINGS
B011C	VEST		4'0"	7'0"	1 3/4"		D	SS	1	AL		-		POWER OPERATED. RE: ELECTRICAL DRAWINGS
B013	ANTE		3'0"	6'8"	1 3/4"		B	HM	1	HM		45 MINS		
B013A	F TLT/LKRS		3'0"	7'0"	1 3/4"		A	HM	1	HM		-		
B013B	M TLT/LKRS		3'0"	7'0"	1 3/4"		A	HM	1	HM		-		
B013C	VEST		3'0"	7'0"	1 3/4"		D	HM	1	SS		-		POWER OPERATED. RE: ELECTRICAL DRAWINGS
B013D	VEST		3'0"	7'0"	1 3/4"		D	HM	1	SS		-		POWER OPERATED. RE: ELECTRICAL DRAWINGS
B014MA	MECHANICAL													EXISTING-NO WORK
B014MB	MECHANICAL		4'0"	7'0"	1 3/4"		A	HM	1	HM		90 MIN		
B015M	MECHANICAL SHAFT		3'0"	7'0"	1 3/4"		A	HM	2	HM				COORDINATE DOOR LOCATION WITH EXHAUST LOCATION
C0-3B	CORRIDOR		4'0"	7'0"	1 3/4"		B	HM	1	HM		45 MINS		ARMOR PLATE INSIDE. POWER OPERATED. RE: ELECTRICAL DRAWINGS

DOOR AND FRAME SCHEDULE NOTES

WINDOW SCHEDULE

NO.		WINDOW SIZE		WINDOW STYLE		GLASS	DETAILS			NOTES
		WIDTH	HEIGHT	OPERATION	MATERIAL	FINISH	HEAD DETAIL	JAMB DETAIL	SILL DETAIL	
01	OFFICE	3'0"	4'0"	Fixed Glass	HM	PT				RATED
01	OFFICE	3'0"	4'0"	Fixed Glass	HM	PT				RATED
02	DECONTAM	2'4"	4'3"	Custom	HM	PT				OPERABLE PASS THRU WINDOW

FINISH SCHEDULE LEGEND

PRODUCTS LISTED ARE INTENDED TO INDICATE THE LEVEL OF QUALITY REQUIRED.

CEILING

GB-1 5/8" GYP. BD. PRIMED AND PAINTED.

AT-1 AC9 ARMSTRONG CLEAN ROOM MYLAR, NO. 1716, 24 X 48 X 5/8 INCHES, UNPERFORATED, WASHABLE, SCRUBABLE AND SOIL RESISTANT. PROVIDE BORDER UNITS AS NECESSARY. NRC VALUE OF 0.55 & CAC VALUE OF 35

AT-2 USG 2115 24X24X5/8-RATED

PAINT

PT-1 LATEX EPOXY-EGGSHELL

PT-2 LATEX-EGGSHELL

PT-2A LATEX ACCENT COLOR-EGGSHELL

PT-3 EXTERIOR LATEX-EGGSHELL

CERAMIC WALL TILE

CT-1 GLAZED SURFACE-SEE DRAWINGS FOR SIZE AND CONFIGURATION.

WALL PROTECTION

WP-1 INPRO CORPORATION, #0101, DESIGNER WHITE, .060 THICK X 48" H SHEET GOODS.

NOTES: INCLUDE ALL ADDITIONAL HARDWARE SUCH AS END CAPS, TOP CAP, JOINT CAP, ETC REQUIRED.

BASE

BR-1 INTEGRAL BASE EXTEND VERTICALLY WITH ALUMINUM SQUARE TOP CAP

BR-2 4" RUBBER COVE

FLOOR

V-1 VINYL SHEET FLOORING - ARMSTRONG MEDINTECH, 86497 BRUSHED SAND WITH WELD ROD W0532 IVORY - EXTEND 6" UP WALLS AND CABINETS TO PROVIDE INTEGRAL BASE.

V-2 VINYL SHEET FLOORING - ARMSTRONG MEDINTECH, 86497 BRUSHED SAND WITH WELD ROD W0532 IVORY - EXTEND 6" UP WALLS AND CABINETS TO PROVIDE INTEGRAL BASE.

AF-1 ACCESS FLOORING RE: SPEC SECTION 09 6900

CONTRACTOR NOTE(S):

1. PRODUCTS CALLED OUT TO BE PROVIDED BY THE OWNER AND INSTALLED BY THE CONTRACTOR ARE IDENTIFIED BY THE BRAND NAME AND MODEL. TO THE EXTENT POSSIBLE, TO ASSIST THE CONTRACTOR IN PRICING THE INSTALLATION.
2. PRODUCTS CALLED OUT HEREIN AER INTENDED TO INDICATE A STANDARD OF QUALITY AND ARE NOT TO BE CONSIDERED AS A RESTRICTED PRODUCT SPECIFICATION.

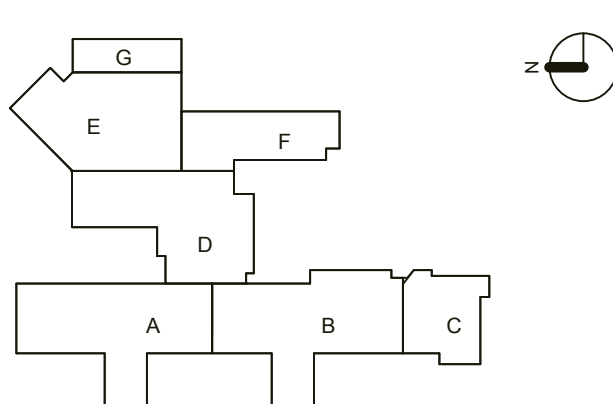
No.	Description	Date
01	95% Submittal	5/20/16
02	100% Submittal	01/20/17
03	Amendment #2	06/23/17

ARCHITECTS/ENGINEERS:
JUNK
802 Broadway, 5th Fl
Kansas City, MO 64105
T: 816-472-7722
F: 816-472-1622
www.junkarchitects.com

LANDSCAPE ARCHITECTS:
Lankford
7007 College Blvd
Suite 450
Overland Park, KS 66211
T: 816-221-1411
F: 816-221-1429
www.lankfordlender.com

ATC
8246 Marshall Drive
Lenexa, KS 66214
T: 913-284-0274
F: 913-284-0293
www.atcgroupservices.com

Building Key Plan:



VA EASTERN KANSAS HEALTH CARE SYSTEM

Dwight D. Eisenhower VA Medical Center
Leavenworth
Colmery-O'Neil VA Medical Center
Topeka

VA



U.S. Department of Veterans Affairs

Drawing Title:

DOOR & FINISH SCHEDULE

Scale:

Approved:

Project Title:

RELOCATE STERILE PROCESSING SERVICE

Building Number:

1

Checked By:

DB

Drawn By:

SM

Location:

Colmery O'Neil VA Medical Center
2200 Gage Blvd., Topeka, KS

Date:

09/01/15

Project No.

589A5-15-117

Drawing No.

AF 610

Dwg. 13 of 43

Department of
VA Veterans Affairs