

GENERAL NOTES:

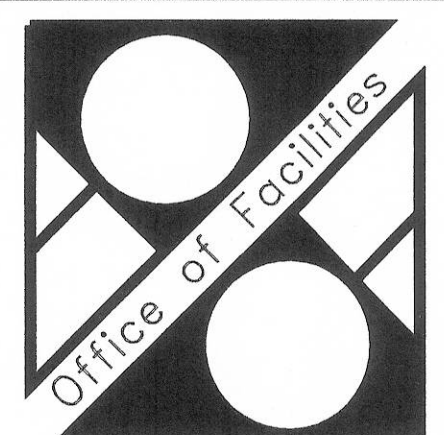
1. THE REVERSE OSMOSIS (RO) WATER PIPE SIZES ARE SHOWN FOR BIDDING PURPOSES. THE SUPPLIER OF THE EQUIPMENT FOR THE RO SYSTEM SHALL BE "FDA - 510K" APPROVED AND SHALL PROVIDE THE FINAL RO PIPE SIZES BASED ON THE SIZING OF THE SYSTEM. THE RO SYSTEM SHALL MEET THE REQUIREMENTS OF ANSI / AAMI RD62.
2. SEE 2-P21 AND 2-P22 FOR ROOF DRAIN INFORMATION.

SPECIFIC NOTES:

1. MOUNT MIXING VALVE FOR P-707, EMERGENCY SHOWER AND EYE AND FACE WASH, 5 FT. AFF. WITH FLOOR-MOUNTED UNISTRUT-TYPE BRACKET.
2. INDIRECT DRAIN PIPE DN TO 4"FD-0 SEE STANDPIPE DRAIN DETAIL 1 ON 2-P9.
3. 5" VACUUM EXHAUST ELBOW DN, COVER WITH INSECT SCREEN.
4. PROVIDE THREE SIDED WATER TIGHT GALVANIZED SHEETMETAL DRAIN PAN UNDER DRAIN PIPES, SIDES TO BE 12" HIGH. SLOPE PAN WITH PIPE TO WALL. STUB 1" DRAIN FROM PAN THROUGH WALL AT LOW POINT.
5. (2) 1" DIALYSIS RO SUPPLY LOOPS, (1) TO THE WEST & (1) TO THE EAST. 1" RO STERILE RINSE SUPPLY LOOP, 1" RO RETURN (ROR) FROM STERILE RINSE LOOP, 1" ROR FROM DIALYSIS EAST LOOP, 1" ROR FROM THE WEST DIALYSIS LOOP, 2 1/2" SOFT COLD WATER (SCW) TO DECONTAM. CONNECT THIS PIPING TO THE OWNER PROVIDED RO EQUIPMENT.
6. 1 1/2" CW & HW TO WATER TREATMENT EQUIPMENT. THE REVERSE OSMOSIS AND WATER SOFTENER EQUIPMENT WILL BE PROVIDED BY THE VA. THE CONTRACTOR SHALL PROVIDE THE WATER ANALYSIS FOR SELECTION OF THE RO EQUIPMENT.
7. 3/4" SRHW DN, 1 1/2" SHW DN, 2 1/2" SCW DN, 4" CW UP&DN, 3" HW UP&DN, 1 1/2" RHW UP&DN, 1" RO SUPPLY DN, 1" RO (ROR) RETURN DN.
8. 1" RO UP TO DIALYSIS CABINET, 1 1/2" DIALYSIS DRAIN PIPE UP & 1" RO FROM DIALYSIS CABINET.

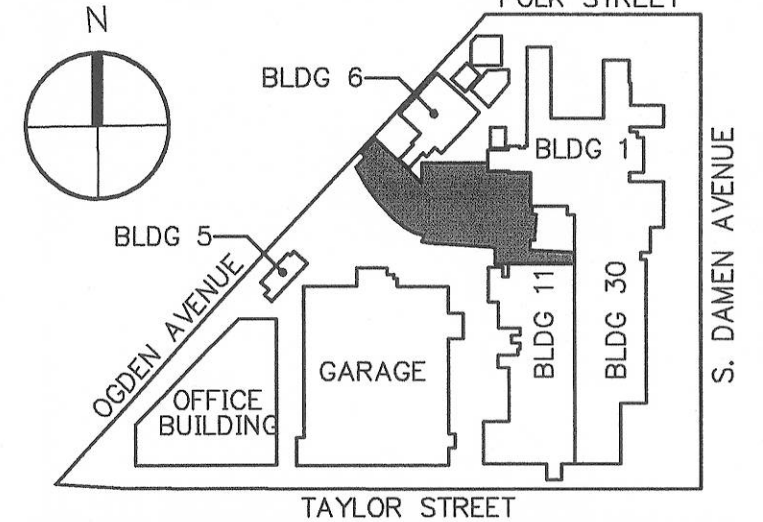
ISSUED FOR BID
AND CONSTRUCTION
FULLY SPRINKLERED

Revision Date No.



Department of
Veterans Affairs

DEPARTMENT OF VETERANS AFFAIRS;
FACILITIES MANAGEMENT SERVICES;
FACILITIES PLANNING AND ANALYSIS.



CONSOLIDATION AND
MODERNIZATION
OF INPATIENT SPACE
JESSE BROWN VA MEDICAL CENTER

820 SOUTH DAMEN AVENUE
CHICAGO, IL 60612
312-469-2100

Project No.: 537CA2406

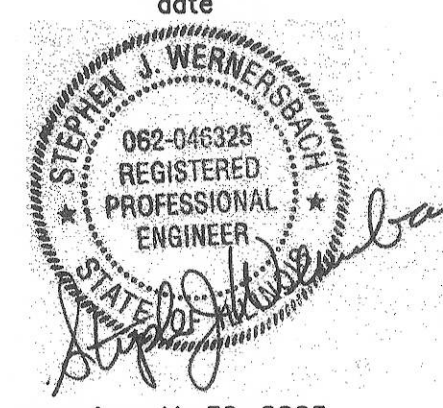
Building No.: 2

Approved: Project Director

Latini S. Hobbs

- PLUMBING CONSULTANT
WARNER CONSTRUCTION CONSULTANTS, INC.
2275 N. ELSTON STREET, CHICAGO, IL 60647
312-469-8000
- CIVIL ENGINEER
TERRA ENGINEERING, LTD.
380 N. LAKE STREET, CHICAGO, IL 60610
312-469-8000
- MATERIALS MANAGEMENT
CINI LITTLE SCHACHINGER, LLC
2275 N. ELSTON STREET, CHICAGO, IL 60647
312-469-8000
- USE SAFETY TECHNIQUES
ROLF JENSEN & ASSOCIATES, INC.
540 W. HAWKINS STREET, CHICAGO, IL 60610
312-469-8000
- EXECUTIVE MEP CONSULTANT
NIKA TECHNOLOGIES, INC.
1400 N. LAKE STREET, CHICAGO, IL 60610
312-469-8000
- COST CONSULTANT
CONSTRUCTION COST SYSTEMS, INC.
200 WEST 2ND STREET, SUITE 200
CHICAGO, IL 60610
312-469-8000
- SECURITY CONSULTANT
SHINER & ASSOCIATES, INC.
ONE NORTH LAKE STREET
CHICAGO, IL 60610
312-469-8000
- ENVIRONMENTAL CONSULTANT
GSC ENVIRONMENTAL, INC.
800 N. LAKE STREET, CHICAGO, IL 60610
312-469-8000
- WATERWORKS CONSULTANT
CITADEL, INC.
1500 N. LAKE STREET, SUITE C
CHICAGO, IL 60610
312-469-8000

01 JUNE 04
date



expires 11-30-2005

SOM/Elberbe Becket
JOINT VENTURE

SKIDMORE, OWINGS & MERRILL LLP
224 SOUTH MICHIGAN AVENUE
SUITE 1000, CHICAGO, ILLINOIS 60604
312-554-9090

ELLERBE BECKET ARCHITECTS AND ENGINEERS, INC.
1001 G STREET NW
SUITE 1000, WASHINGTON, DC 20001
202-654-9300

LEVEL 3 AND EXISTING LEVEL 4
PLUMBING PLAN
EAST
Scale: 1/8"=1'-0"

Date 01JUN04 4611.0034.00

In Charge

Drawn By SALEEM

Checked By FAZAL



2-P10