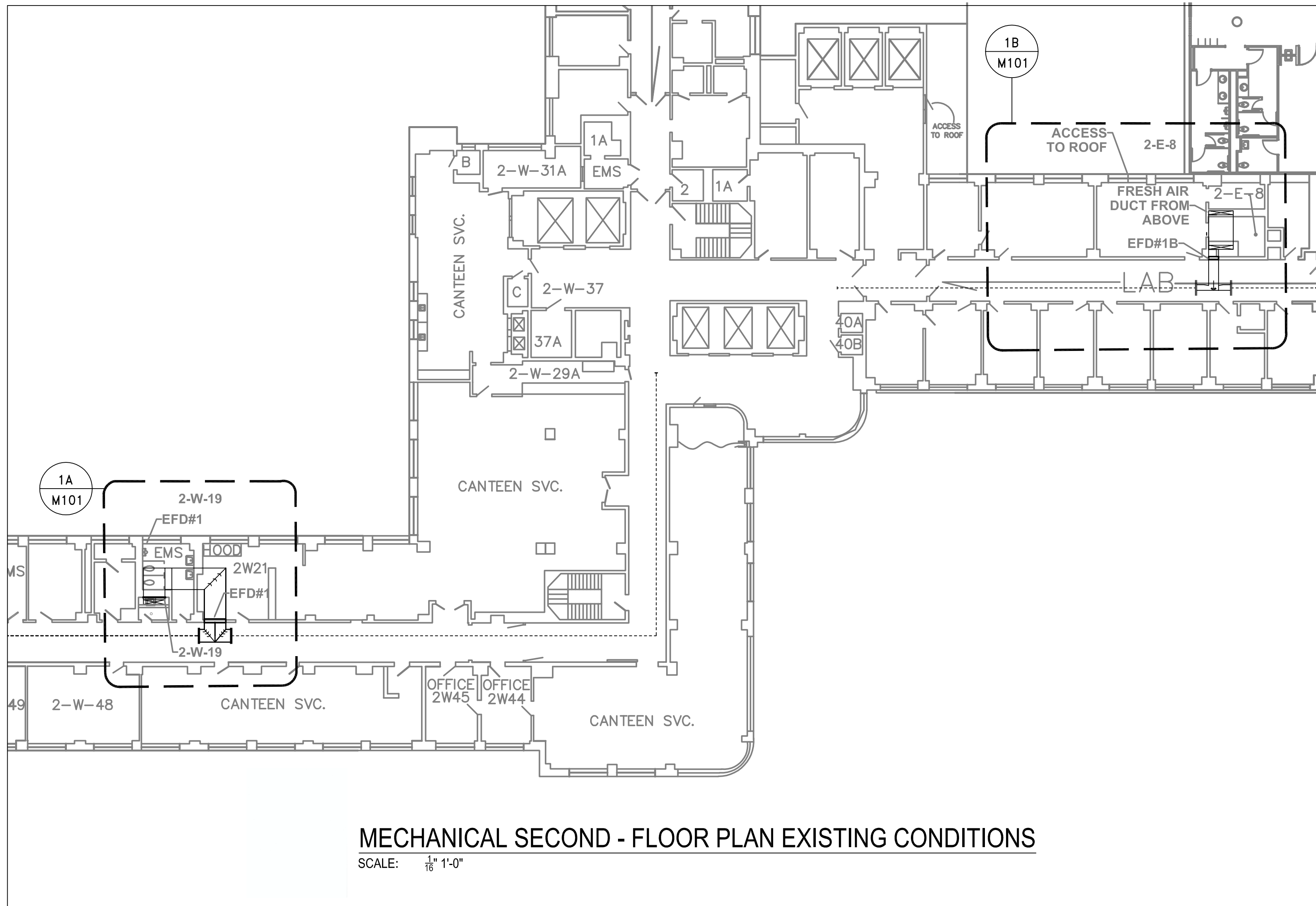
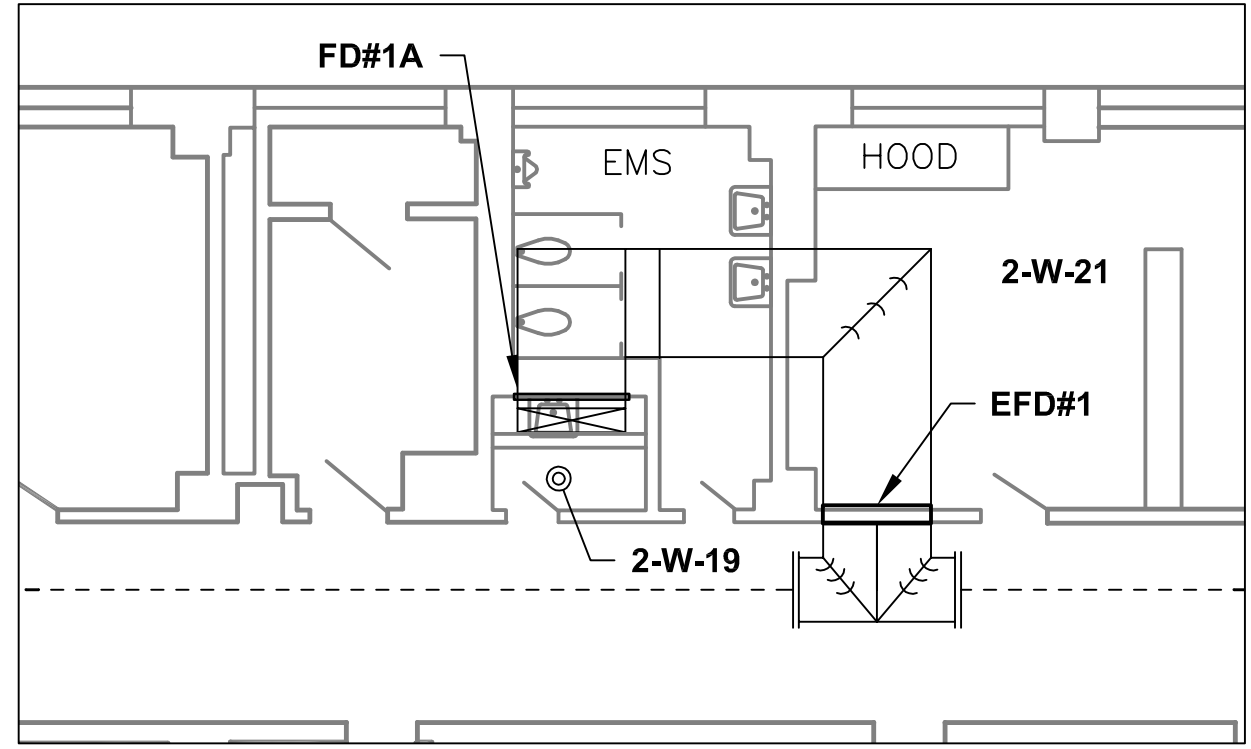


A three inches = one foot
 B one and one half inches = one foot
 C one inch = one foot
 D three quarters inch = one foot
 E one half inch = one foot
 F one eighth inch = one foot



MECHANICAL SECOND - FLOOR PLAN EXISTING CONDITIONS
 SCALE: 1/16" = 1'-0"



1A M101 SECOND FLOOR ROOM 2-W-19
 SCALE: 1/8" = 1'-0"

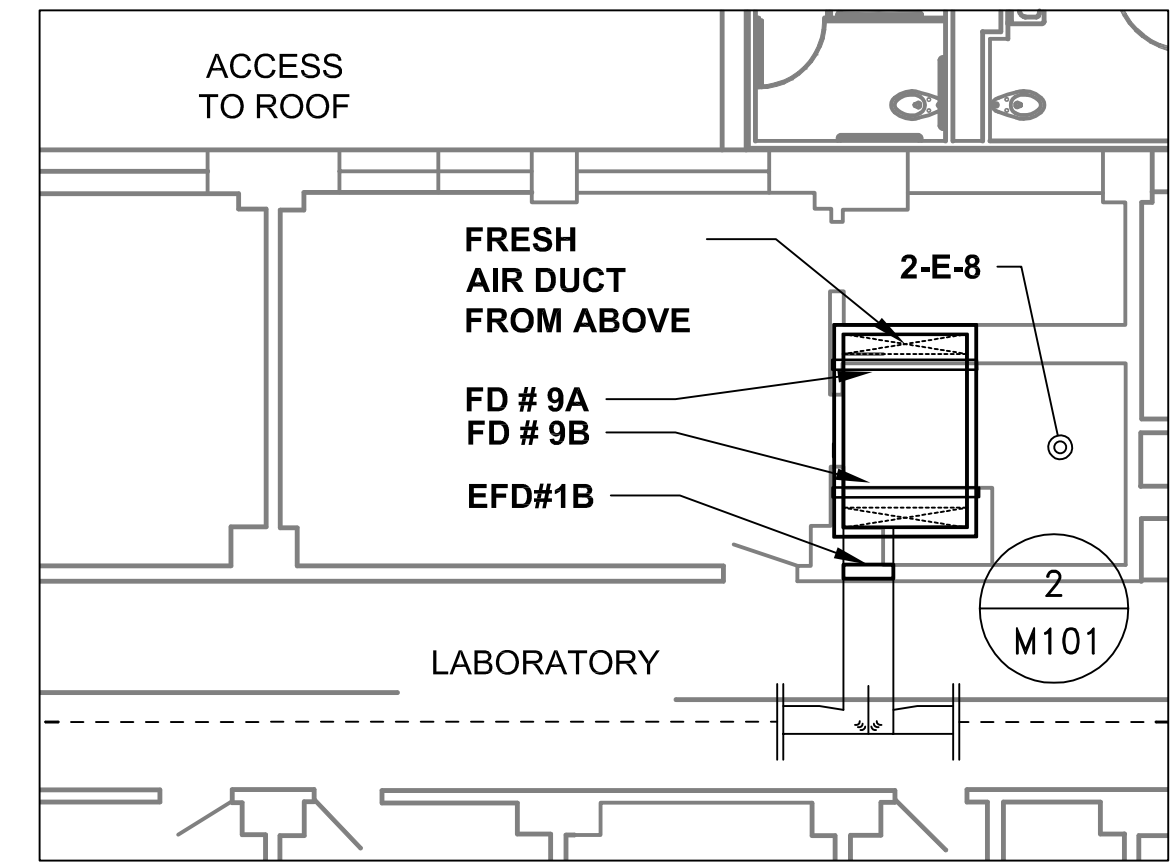
2-W-19 SCOPE OF WORK:

DECOMMISSION EXISTING FIRE DAMPER: EFD#1

1. INSTALL DUCT ACCESS DOOR TO PROVIDE CODE COMPLIANT ACCESS TO EXISTING FIRE DAMPER EFD#1. BLOCK FIRE DAMPER PERMANENTLY OPEN.
2. SEE DECOMMISSION EXISTING FIRE DAMPER DETAIL NOTES.

INSTALL NEW FIRE DAMPER FD#1 AT OUTSIDE AIR SHAFT CONNECTION

1. INSTALL NEW FIRE DAMPER AT EXISTING DUCT CONNECTION TO RATED OUTSIDE AIR SHAFT.
2. SEE NEW FIRE DAMPER DETAIL NOTES.
3. INSTALL NEW FIRE DAMPER AT RATED SHAFT. SEE DETAIL NOTES.



1B M101 SECOND FLOOR ROOM 2-E-8
 SCALE: 1/8" = 1'-0"

2-E-8 SCOPE OF WORK

PROVIDE ACCESS TO EXISTING FIRE DAMPER: EFD#1B

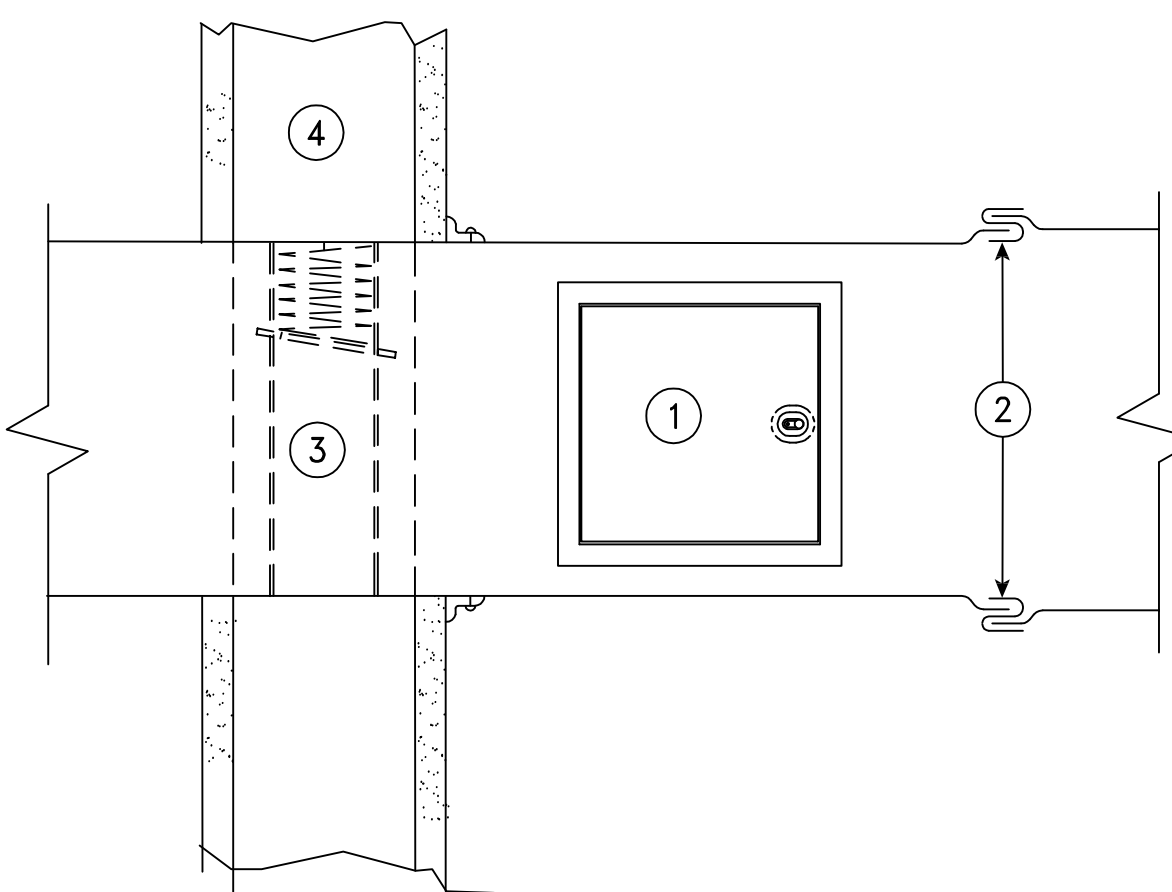
1. PROVIDE NEW DUCT ACCESS DOOR TO PROVIDE CODE COMPLIANT ACCESS TO EXISTING FIRE DAMPER EFD#1B.
2. REPAIR INSULATION (IF DUCT IS INSULATED).
3. REMOVE EXISTING FUSIBLE LINK AND INSTALL NEW FUSIBLE LINK OF SAME TEMPERATURE RATING.
4. FUNCTIONALLY TEST EXISTING FIRE DAMPER.
5. SEE PROVIDE ACCESS TO EXISTING FIRE DAMPER DETAIL NOTES ON SHEET M104.

PROTECT EXISTING EXPOSED SHAFT DUCT

1. FULLY ENCLOSE EXISTING EXPOSED SECTIONS OF HORIZONTAL AND VERTICAL SHAFT DUCTWORK BETWEEN THE 3RD FLOOR ASSEMBLY AND THE 2ND FLOOR ASSEMBLY WITHIN A 2-HOUR FIRE RESISTANT SHAFT WALL ENCLOSURE. SEE 2-E-8 NEW SHAFT WALL CONSTRUCTION DETAILS NOTES.
2. 2-E-8 OPTION 1: IN LIEU OF INSTALLING A NEW SHAFT WALL ENCLOSURE INSTALL A NEW FIRE DAMPER WITH ACCESS PANEL AT THE SHAFT DUCT PENETRATION AT THE 3RD FLOOR ASSEMBLY AND A NEW FIRE DAMPER AND ACCESS PANEL AT THE LOCATION THE EXPOSED SHAFT DUCT. CONNECT TO THE RATED SHAFT CONTINUING TO THE 2ND FLOOR. SEE 2-E-8 OPTION 1 DETAIL NOTES.

INSTALL NEW FIRE DAMPERS FD#9A AND FD#9B AT OUTSIDE AIR SHAFT CONNECTION

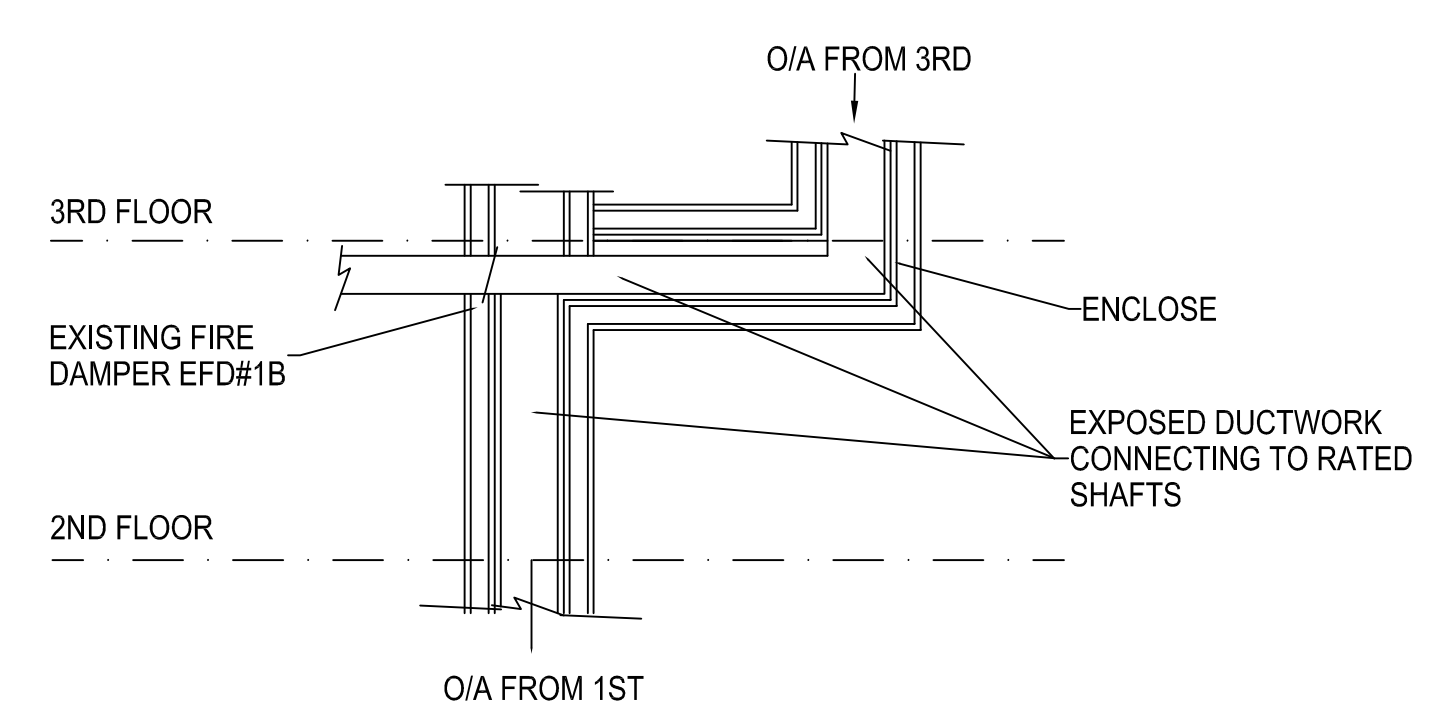
1. INSTALL NEW FIRE DAMPER AT EXISTING DUCT CONNECTION TO RATED OUTSIDE AIR SHAFT. SEE NEW FIRE DAMPER AT RATED SHAFT DETAIL NOTES.



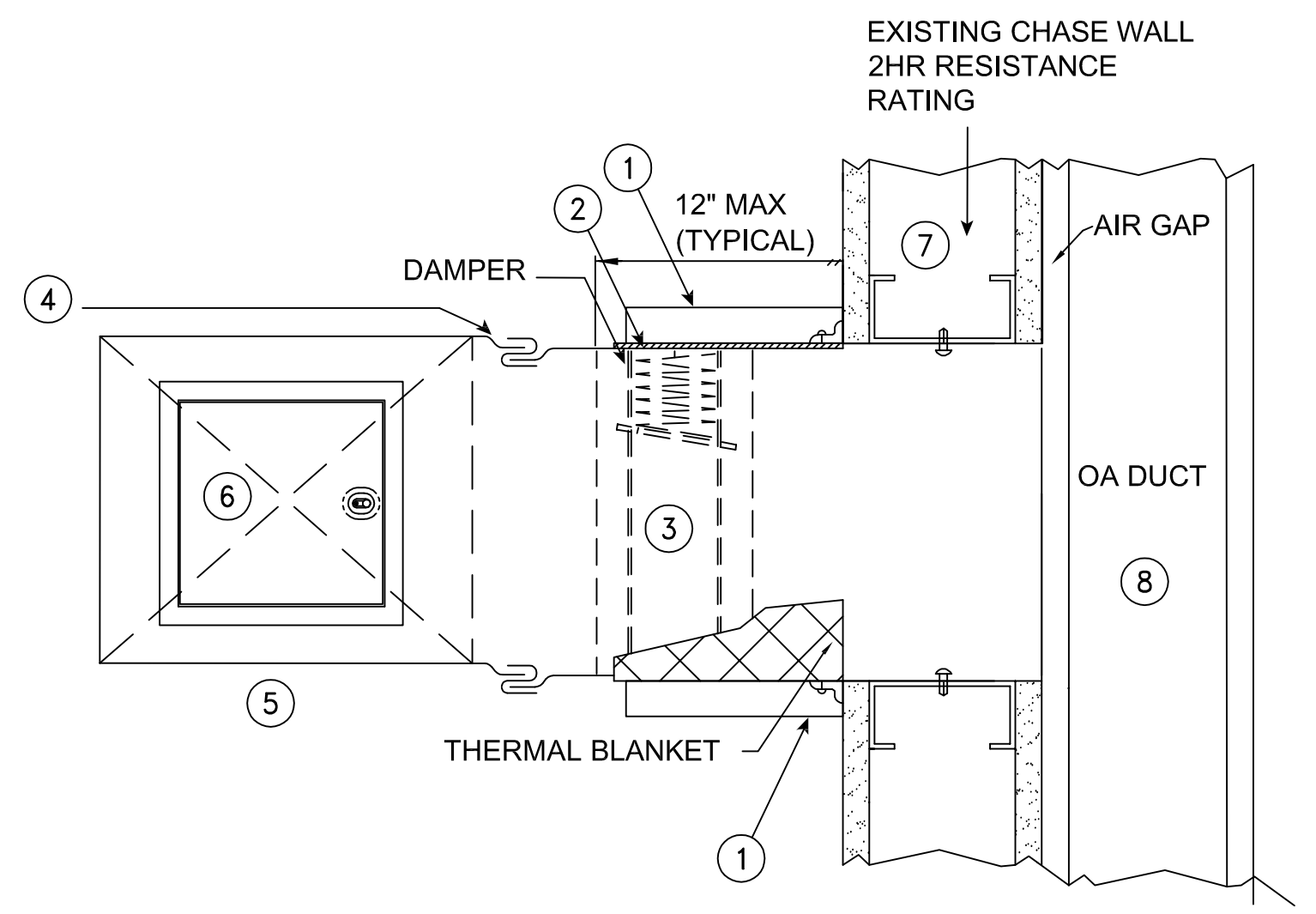
DECOMMISSION EXISTING FIRE DAMPER
 SCALE: NTS

DETAIL NOTES:

1. PROVIDE NEW ACCESS DOOR.
2. EXISTING BREAKAWAY SLEEVE.
3. DECOMMISSION EXISTING FIRE DAMPER. BLOCK FIRE DAMPER SHUTTER PERMANENTLY OPEN WITH SHEET METAL SCREWS OR METAL ANGLES ATTACHED TO FRAME.
4. EXISTING CORRIDOR WALL.



2 M101 SECOND FLOOR ROOM 2-E-8 - DETAIL
 NOT TO SCALE



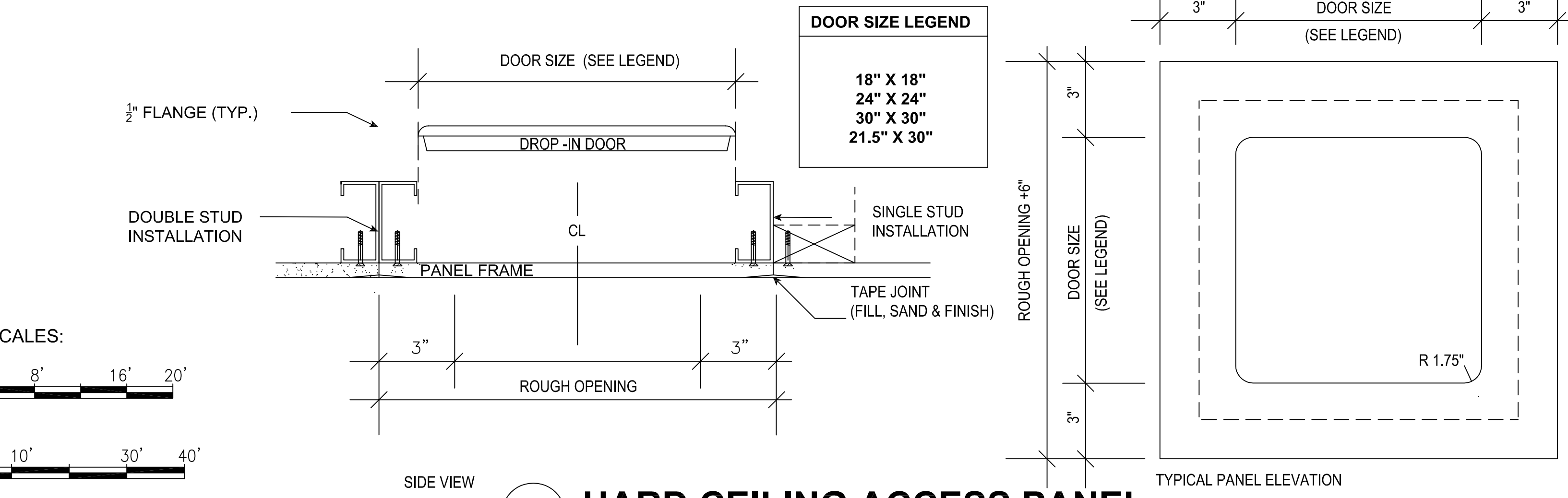
NEW FIRE DAMPER INSTALLATION AT RATED SHAFT
 SCALE: N.T.S.

DETAIL NOTES:

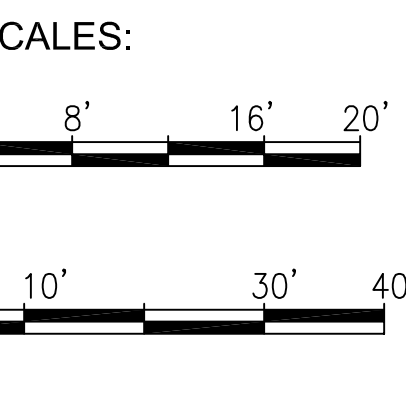
1. PROVIDE ONE LAYER 5/8" TYPE X FIRE RATED SHEETROCK ALL AROUND DUCT PENETRATION.
2. PROVIDE 1/2" THICKNESS FIBERFRAX INSULATION (GLUED WITH RUBBER CEMENT) TO TOP AND BOTH SIDES.
3. PROVIDE NEW 90 MINUTE RATED DAMPER.
4. PROVIDE BREAKAWAY SLEEVE TO DUCT CONNECTION.
5. PROVIDE NEW DUCT SECTION AS REQUIRED TO REPLACE "CUT OUT" SECTION OF DUCT. SEE GENERAL NOTES OBSTRUCTIONS.
6. PROVIDE NEW ACCESS DOOR AS REQUIRED TO SERVICE FD. SEE GENERAL NOTES OBSTRUCTIONS.
7. EXISTING OA CHASE WALL - 2 HR FIRE RESISTANCE RATING.
8. EXISTING OA DUCT RUN IN RATED CHASE.

GENERAL NOTES OBSTRUCTIONS:

1. EXISTING DUCT SUPPORT STRAPS, FOR "CUT OUT" SHALL BE DEMOLISHED. NEW DUCT AND EXISTING DUCT TO REMAIN SHALL BE SUPPORTED SO AS TO NOT INTERFERE WITH NEW ACCESS DOOR. EXISTING CEILING GRID SUPPORT WIRES SHALL BE RELOCATED AS NECESSARY TO PROVIDE ACCESS TO NEW ACCESS DOOR.
2. DEMOLISH ALL CEILINGS, BELOW DUCTWORK IN AREAS WHERE DUCTWORK IS TO RECEIVE NEW FIRE DAMPERS AND/OR ACCESS DOORS. SECURE AND PROTECT FROM DAMAGE ALL SYSTEMS AND MATERIALS NOT INDICATED OR NOTED TO BE REROUTED. EXCEPT AS PERMITTED OTHERWISE, IN WRITING BY THE CONTRACTING OFFICER (CO) ALL SYSTEMS SHOULD REMAIN IN OPERATION DURING THE LIFE OF THE CONTRACT.
3. PROVIDE NEW CEILINGS OF SAME TYPE AND MATERIALS AS THE CEILINGS DEMOLISHED FOR NEW WORK TO PROVIDE NEW AND/OR MODIFY DUCTWORK, ACCESS, AND DAMPERS. NEW FINISHES SHALL MATCH EXISTING FINISHES IN TERMS OF COLOR, TEXTURE, AND METHOD OF APPLICATION. ALL METHODS AND MATERIALS SHALL BE APPROVED IN WRITING BY THE COR PRIOR TO PURCHASE AND INSTALLATION.
4. CONTRACTOR TO FIELD VERIFY ALL DAMPERS AND UTILITIES PRIOR TO BID AT ARRANGED PRE-BID SITE VISIT.



3 M101 HARD CEILING ACCESS PANEL
 SCALE: NTS



DOOR SIZE LEGEND

18" X 18"
24" X 24"
30" X 30"
21.5" X 30"

Revisions:	Date:	CONSULTANTS:		ARCHITECT/ENGINEERS:		Drawing Title MECHANICAL SECOND FLOOR PLAN	Project Title IMPROVE FIRE DAMPER ACCESS OVERTON BROOKS VA MEDICAL CENTER	Project Number 667-16-105	Office of Construction and Facilities Management	
							Location SHREVEPORT, LA	Building Number 1		
							Date 03/10/17	Drawn MV	Checked MDF	Dwg. 4 of 13

100% SUBMISSION