

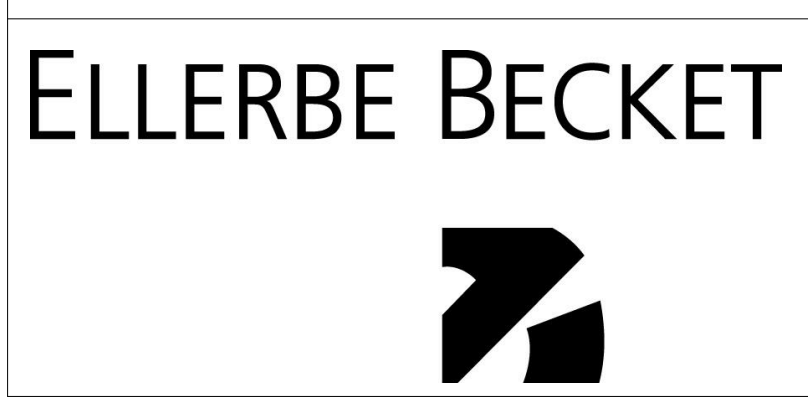
GENERAL NOTES:  
1. SEE DRAWING Q010 AND Q011 FOR PROJECT GENERAL NOTES, ABBREVIATIONS, SYMBOLS AND LEGENDS, ETC.  
FINISH PLAN GENERAL NOTES:  
1. SEE ROOM FINISH SCHEDULES SHEET 1-AS04 FOR MORE INFORMATION.

5/30/2012 10:20:30 AM  
three inches = one foot  
one & one half inches = one foot  
one inch = one foot  
three quarters inch = one foot  
one half inch = one foot  
three eighths inch = one foot  
one quarter inch = one foot  
one eighth inch = one foot  
one sixteenth inch = one foot

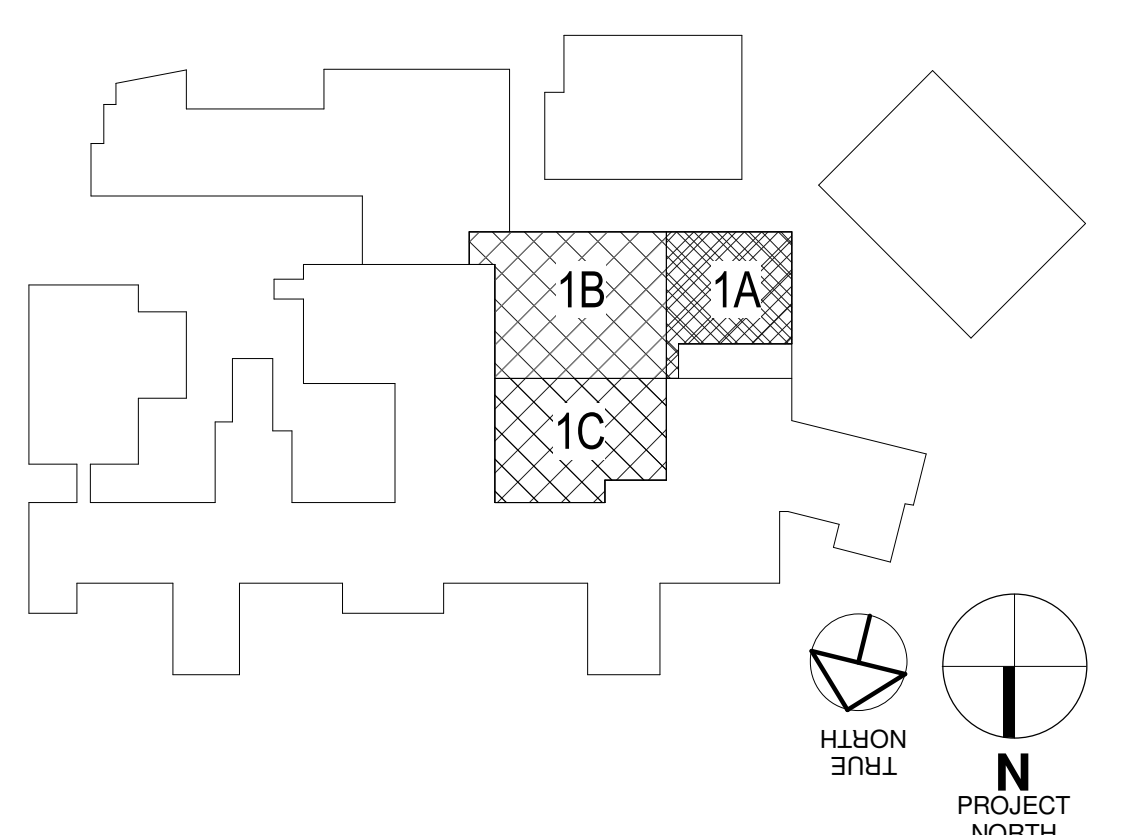
A  
B  
C  
D  
E  
F

04 FOURTH FLOOR- 1/8" FLOOR FINISH  
PLAN - PHASE 1  
1/8" = 1'-0"

Revisions:	Date	CONSULTANTS:	CERTIFICATION/SEAL	ARCHITECT/ENGINEERS/COST ESTIMATORS:	Drawing Title:	Project Title:	Project Number:
		MECH/ELEC/PLUMBING Ellerbe Becket, Inc 800 LaSalle Ave, Suite 250 Minneapolis, MN 55402 t: 612.376.2000 f: 612.376.2271	STRUCTURAL Ellerbe Becket, Inc 800 LaSalle Ave, Suite 250 Minneapolis, MN 55402 t: 612.376.2000 f: 612.376.2271	FIRE PROTECTION FP&C CONSULTANTS, INC One Ward Parkway Suite 200 Kansas City, MO 64112 t: 816.931.3377 f: 816.931.3378	FOURTH FLOOR, FLOOR FINISH PLAN - PHASE 1	RELOCATE SURGICAL OPERATING ROOMS, IOWA CITY IA	636-403
					Approved: Project Director	Location IOWA CITY, IOWA 52246 Date MAY 30, 2012	Building Number 1
						Checked J.F.	Drawn L.S.
							Drawing Number 1-IN104A Dwg. 59 of 130



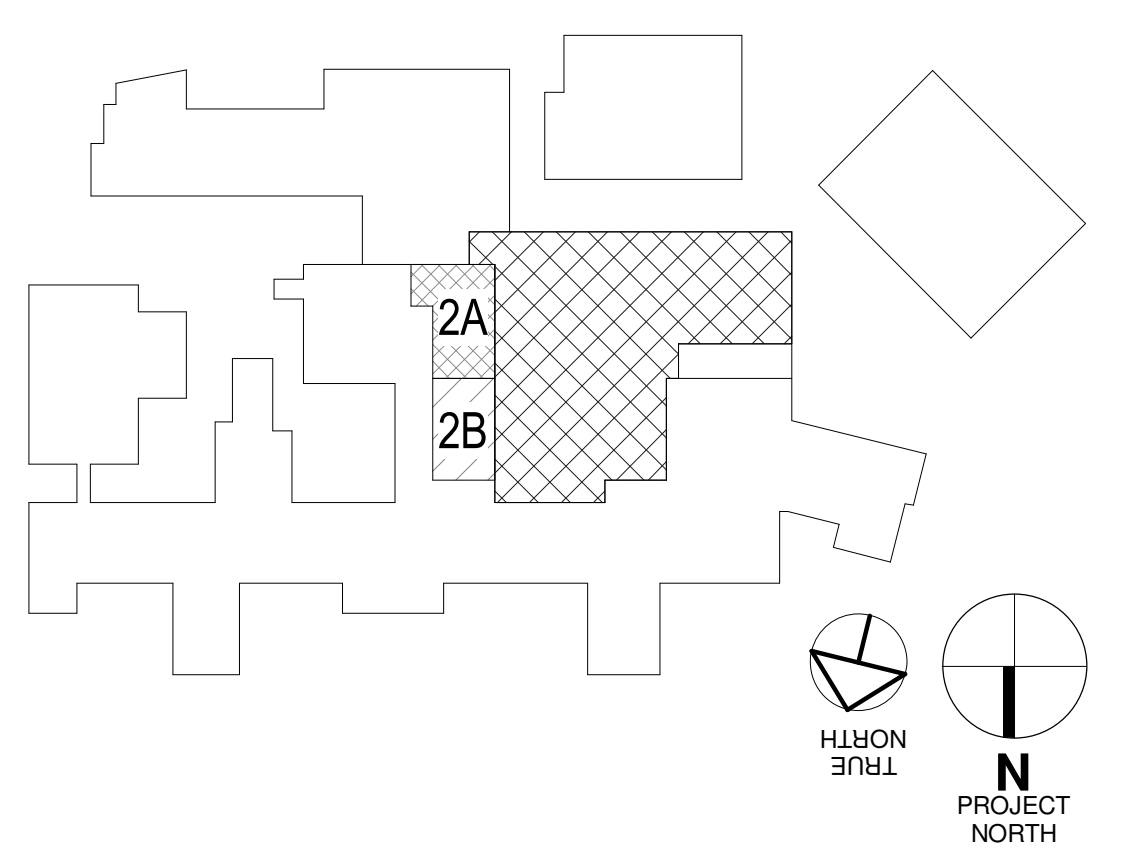
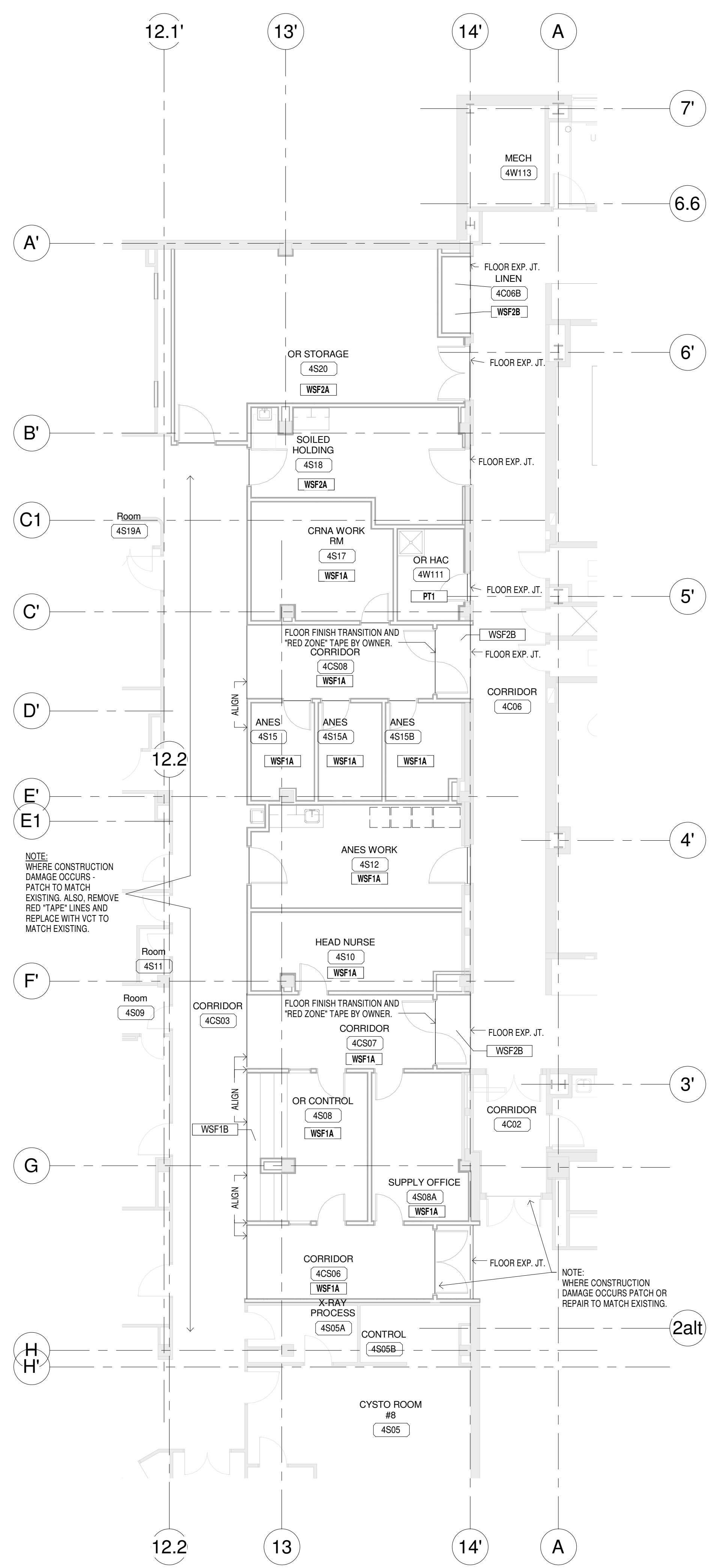
2380 McGee Street,  
Suite 200  
Kansas City, MO 64108  
816 561 4443  
Ellerbe Becket, Inc.  
Ellerbe Becket Architects  
and Engineers, Inc.  
Ellerbe Becket Architects  
and Engineers  
2009



GENERAL NOTES:  
1. SEE DRAWING Q010 AND Q011 FOR PROJECT GENERAL NOTES, ABBREVIATIONS, SYMBOLS AND LEGENDS, ETC.

FINISH PLAN GENERAL NOTES:  
1. SEE ROOM FINISH SCHEDULES SHEET 1-AS004 FOR MORE INFORMATION.

5/30/2012 10:20:32 AM  
one & one half inches = one foot  
one inch = one foot  
one half inch = one foot  
three quarters inch = one foot  
one half inch = one foot  
three eighths inch = one foot  
one quarter inch = one foot  
one eighth inch = one foot



04. FOURTH FLOOR - 1/8" FLOOR FINISH  
PLAN - PHASE 2  
1/8" = 1'-0"

Revisions:	Date	CONSULTANTS:	CERTIFICATION/SEAL	ARCHITECT/ENGINEERS/COST ESTIMATORS:	Drawing Title:	Project Title:	Project Number:	Building Number:	Drawings Number:
		MECH/ELEC/PLUMBING Ellerbe Becket, Inc. 800 LaSalle Ave, Suite 250 Minneapolis, MN 55402 t: 612.376.2000 f: 612.376.2271	STRUCTURAL Ellerbe Becket, Inc. 800 LaSalle Ave, Suite 250 Minneapolis, MN 55402 t: 612.376.2000 f: 612.376.2271	FIRE PROTECTION FP&C CONSULTANTS, INC. One Ward Parkway Suite 200 Kansas City, MO 64112 t: 816.931.3377 f: 816.931.3378	FOURTH FLOOR, FLOOR FINISH PLAN - PHASE 2	RELOCATE SURGICAL OPERATING ROOMS, IOWA CITY IA	636-403	1	1-IN104B
				2380 McGee Street, Suite 200 Kansas City, MO 64108 816 561 4443 2009	Approved: Project Director	Location IOWA CITY, IOWA 52246 Date MAY 30, 2012 Checked J.F. Drawn L.S.			Dwg. 60 of 130





**FINISH PLAN GENERAL NOTES:**  
1. SEE ROOM FINISH SCHEDULES SHEET 1-AS904 FOR MORE INFORMATION



Revisions:		Date	CONSULTANTS:			CERTIFICATION/SEAL:	ARCHITECT/ENGINEERS/COST ESTIMATORS:			Drawing Title: FOURTH FLOOR, WALL FINISH PLAN - PHASE 2		Project Title: RELOCATE SURGICAL OPERATING ROOMS, IOWA CITY IA		Project Number 636-403		<div>Construction &amp; Facilities Management</div> <div>CFM</div> <div>Department of Veterans Affairs</div>			
			MECH/ELEC/PLUMBING Ellerbe Becket, Inc				STRUCTURAL Ellerbe Becket, Inc					Building Number 1							
			800 LaSalle Ave, Suite 250 Minneapolis, MN 55402				FIRE PROTECTION FP&C CONSULTANTS, INC One Ward Parkway Suite 200 Kansas City, MO 64112			2380 McGee Street, Suite 200 Kansas City, MO 64108 816 561 4443		Ellerbe Becket, Inc. Ellerbe Becket Architects and Engineers, Inc. Ellerbe Becket Architects and Engineers		Drawing Number 1-IN204B					
			t: 612.376.2000 f: 612.376.2271				t: 612.376.2000 f: 612.376.2271			t: 816.931.3377 f: 816.931.3378				Location IOWA CITY, IOWA 52246			Checked J.F.		Drawn L.S.
										2009		Approved: Project Director		Date MAY 30, 2012			Dwg. 62 of 130		

