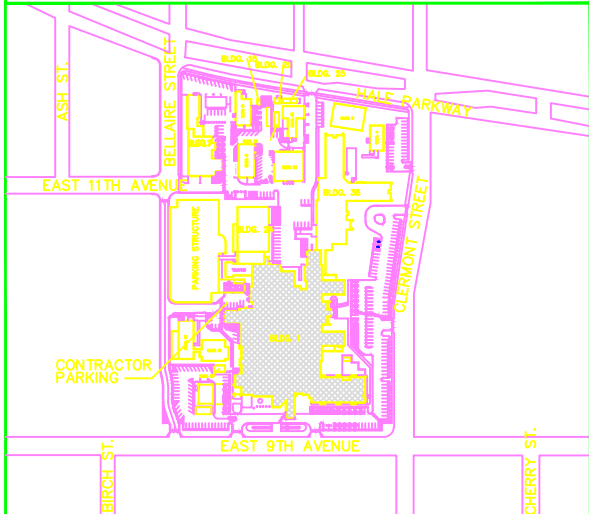


FY12 FACILITY IMPROVEMENTS

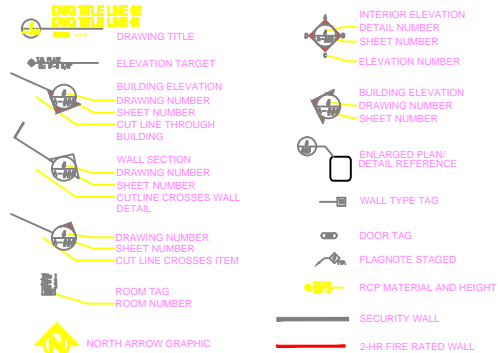
PROJECT 554-12-803

SUBMITTAL REQUIRMENTS

1. THE EXISTING HOSPITAL IS FULLY SPRINKLERED. MODIFICATIONS TO EXISTING SYSTEM SHALL BE IN FULL ACCORDANCE WITH NFPA 13, VA REQUIREMENTS, AND LOCAL FIRE CODES.



GRAPHIC SYMBOLS



GENERAL NOTES

1. CONTRACTOR TO REPLACE ALL CEILING TILES AND GRIDS IN ALL SPECIFIED LOCATIONS. SALVAGE EXISTING CEILING TILES FOR REUSE WHERE IDENTIFIED IN DRAWINGS.
2. PROVIDE RUBBER OR STAINLESS STEEL THRESHOLD AT ALL DOORS.
3. CONTRACTOR TO REMOVE, CLEAN, AND RE-INSTALL EXISTING "EGG CRATE" LIGHT DIFFUSERS AND REBULB FIXTURES AS NECESSARY. REPLACE ANY DIFFUSER THAT HAS BEEN DAMAGED.
4. CONTRACTOR TO RECYCLE REMOVED MATERIALS WHENEVER POSSIBLE.
5. CONTRACTOR TO COMPLETE WORK DURING BUSINESS HOURS WHENEVER POSSIBLE. THE WORK IS NOT TO INTERFERE WITH PATIENT CARE. IF CERTAIN AREAS OF WORK NEED TO BE COMPLETED AFTER HOURS, IT WILL NEED TO BE COORDINATED WITH THE OWNER AND PHASED ACCORDINGLY.
6. IN CONSTRUCTION AREAS, FAN COILS TO BE TURNED OFF AND COVERED WITH PLASTIC TO PROTECT FILTERS/ COILS FROM DUST.
7. CONTRACTOR TO RECEIVE VA BADGE THROUGH VA POLICE AND VA HUMAN RESOURCES. PHOTO ID REQUIRED TO RECEIVE VA BADGE.
8. CONTRACTOR MUST REMOVE AND REINSTALL WALL-HUNG ITEMS. CONTRACTOR TO REPAIR, PATCH AND PAINT WALL SURFACES IN EACH AREA OF WORK. THE CONTRACTOR SHALL FIELD VERIFY ALL PATCH AND REPAIR REQUIREMENTS OF EXISTING SURFACES TO RECEIVE NEW FINISHES. THE COST OF ALL SUCH WORK IS TO BE COVERED BY BID.
9. WHERE FLOORING IS TO BE REMOVED. CONTRACTOR TO REMOVE ANY MASTIC ASBESTOS USING THE APPROPRIATE PROCEDURES/PRECAUTIONS.
10. ALL WINDOWS AND BLINDS TO BE CLEANED AFTER COMPLETION OF WORK.
11. CONTRACTOR ENCOURAGED TO VISIT ALL AREAS OF WORK, INCLUDING WALKING THE SITE, MEASURE EXISTING DIMENSIONS AND OBSERVE EXISTING CONDITIONS BEFORE BIDDING WORK, ORDERING MATERIALS, OR STARTING ANY CONSTRUCTION.
12. DO NOT PRESUME THAT THE SCOPE OF WORK IS SINGULARLY DEFINED. THE SCOPE OF WORK IS DEFINED THROUGHOUT THE ENTIRE SET OF DRAWINGS AND DIVISION OF SPECIFICATIONS. YOU MUST REVIEW THE ENTIRE SET OF DRAWINGS AND SPECIFICATIONS TO DETERMINE SCOPE.
13. THE CONTRACTOR IS RESPONSIBLE FOR LOCATING AND PROTECTING ALL UTILITY LINES. THE LOCATIONS THAT ARE SHOWN ON THE DRAWINGS ARE APPROXIMATE. REPAIR ALL DAMAGE TO UTILITY LINES CAUSED BY CONSTRUCTION OPERATIONS AT NO COST TO THE OWNER.

PHASING

ALL WORK WILL BE PHASED AND APPROVED BY COTR AND VA PERSONNEL. WORK TO TAKE PLACE DURING BUSINESS HOURS. IF WORK CAN NOT BE COMPLETED DURING BUSINESS HOURS WORK WILL BE SCHEDULED AT NIGHT OR ON WEEKENDS. CONTRACTOR TO COORDINATE EACH TASK AND PHASE WITH COTR AND STAFF TWO (2) WEEKS IN ADVANCE.

VA PROJECT TEAM

OWNER U.S. DEPARTMENT OF VETERANS AFFAIRS VA ECHS MEDICAL CENTER (MS FMS138) 1055 CLEMMONT STREET DENVER, CO 80220-3808	OWNER'S CONTRACTING OFFICER VSN 19 CONTRACTING OFFICER ROCKY MOUNTAIN CONSOLIDATED CONTRACTING 4100 E. MISSISSIPPI AVE, SUITE 900 GLENDALE, CO 80248
DESIGN INTENT FMS AMISA JONES PH:303.393.8020 EXT. 3103 FAX:303.393.2894	INTEGRATED PROJECT TEAM END USERS PLUMBERS ELECTRICIANS SAFETY INFECTION CONTROL IRM

ABBREVIATIONS

(E)	EXISTING	DR.	DRIVE
(N)	NEW	ST.	STREET
N.I.C.	NOT IN CONTRACT	CMU	CONCRETE MASONRY UNIT
E.T.S.	EXPOSED TO STRUCTURE	EQ.	EQUAL
N.T.S.	NOT TO SCALE	STL.	STAINLESS
SM.	SIMILAR	NR.	NOT RATED
BLDG.A.	BUILDING	A.F.F.	ABOVE FINISHED FLOOR
PH.	PHONE	EJ.	EXPANSION JOINT
INC.	INCORPORATED	CJ.	CONTROL JOINT
S.	SOUTH	Q.R.S.	QUICK RELEASE SPRINKLER

INDEX OF DRAWINGS

DWG NO.	DRAWING TITLE	SHEET OF #
0000	GENERAL INDEX	1 OF 13
	ARCHITECTURAL	
A100	LOCATION PLANS FOR 4TH AND 5TH FLOOR BATHROOM SHOWER SEAT WORK	2 OF 13
A101	4TH AND 5TH FLOOR BATHROOM SHOWER SEAT DEMOLITION PLANS	3 OF 13
A102	4TH AND 5TH FLOOR BATHROOM SHOWER SEAT ARCHITECTURAL PLANS	4 OF 13
A103	SC107-1 FLOOR PLANS	5 OF 13
A104	20129 EAST AND WEST FLOOR PLANS	6 OF 13
A105	CARD READER MED/SUPPLY FLOOR PLANS	7 OF 13
A106	EMERGENCY DEPARTMENT FLOOR PLANS	8 OF 13
A107	FIRM C 8C137 FLOOR PLANS	9 OF 13
A108	20108 FLOOR PLANS	10 OF 13
A109	BUILDING 24 FLOOR PLANS	11 OF 13
A110	1C100C FLOOR PLANS	12 OF 13
A111	130-38 BATHROOM FLOOR PLANS	13 OF 13

35% DOCUMENTS-NOT FOR CONSTRUCTION - FULLY SPRINKLERED

REV	35% DESIGN REVIEW PACKAGE	4.27.12
By	Revisions	Date

PLOTTING NOTES:

1. FULL SIZE V.A. "E" SHEET (AS INDICATED)
2. HALF SIZE V.A. "D" SHEET (1/2 THE INDICATED SCALE)
3. LETTER SIZE: (NOT SCALE)

GENERAL NOTES:

1. SCALED DIMENSIONS & ARCHITECTURAL FEATURES MAY NOT BE CORRECT.
2. CONTRACTORS & A/E's ARE RESPONSIBLE TO FIELD VERIFY ALL DIMENSIONS WITHIN THE PROJECT AREA.

DEPARTMENT OF VETERANS AFFAIRS
MEDICAL CENTER
1055 Clermont Street
Denver, Colorado, 80220

Drawing Title

COVER SHEET, INDEX OF
DRAWINGS, VA PROJECT TEAM

Approved: Service Chief

Approved: Section Chief

Drawn

Checked

N/A

Project Title

FY12 FACILITY
IMPROVEMENTS

Building Number

Wing

Title Block

By

ska

Date

4.30.12

Project No.

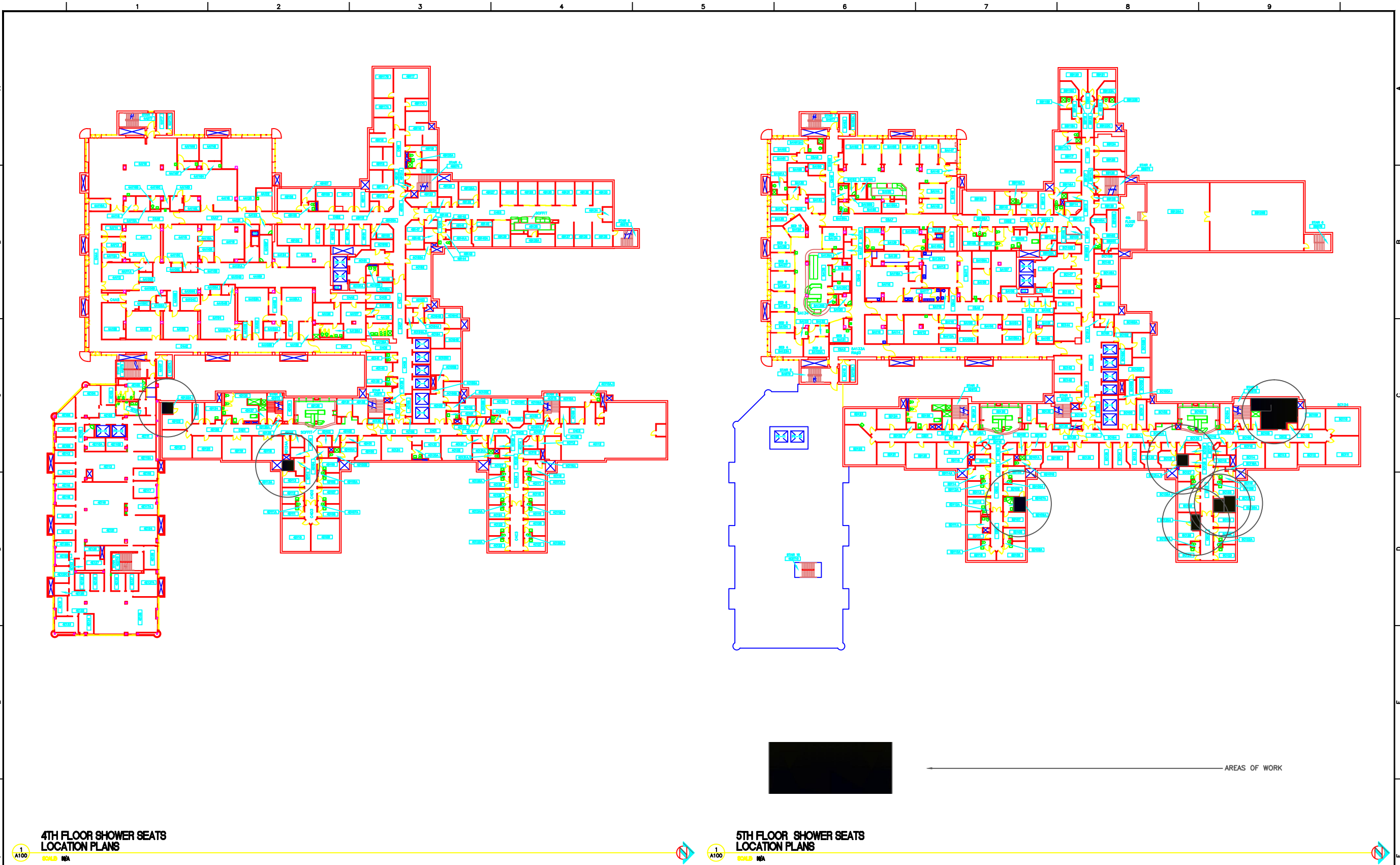
554-12-803

DRAWING No

G1001

Dwg 1 Of 13

Department of
Veterans Affairs



1
A100
SCALES N/A

4TH FLOOR SHOWER SEATS
LOCATION PLANS

1
A100
SCALES N/A

5TH FLOOR SHOWER SEATS
LOCATION PLANS

REV	30% DESIGN REVIEW PACKAGE	4.27.12
By	Revisions	Date

PLOTTING NOTES:

1. FULL SIZE V.A. "E" SHEET (AS INDICATED)
2. HALF SIZE V.A. "D" SHEET (1/2 THE INDICATED SCALE)
3. LETTER SIZE: (NOT SCALE)

GENERAL NOTES:

1. SCALED DIMENSIONS & ARCHITECTURAL FEATURES MAY NOT BE CORRECT.
2. CONTRACTORS & A/E's ARE RESPONSIBLE TO FIELD VERIFY ALL DIMENSIONS WITHIN THE PROJECT AREA.

DEPARTMENT OF VETERANS AFFAIRS
MEDICAL CENTER
1055 Clermont Street
Denver, Colorado, 80220

Drawing Title LOCATION PLANS SHOWER SEATING		Project Title FY12 FACILITY IMPROVEMENTS		Date 04.30.12
Approved: Service Chief		Building Number 1		Project No. 554-12-803
Approved: Section Chief		Wing B,C,D		Title Block By ska
Drawn AYJ		Checked N/A		DRAWING No A100
				Dwg 2 Of 13

Department of
Veterans Affairs

PLAN KEY NOTES

1. DEMOLISH EXISTING CERAMIC TILES. APPROXIMATELY 4 TO 5 SQF OF 11.5 X 11.5 CERAMIC TILES TO BE REMOVED.

2. IN THE EVENT, THE CONTRACTOR DISCOVERS A WALL-MOUNTED OR FLOOR MOUNTED SHOWER SEAT, REMOVE AND SALVAGE ITEM.

3. PROVIDE INFECTION CONTROL MEASURES, INCLUDING 6 MIL PLASTIC BARRIER, HEPA MACHINES, PLASTIC MATS, ETC.

4. INFECTION CONTROL: HIGH RISK, TYPE B, LEVEL III/IV PROCEDURES

INFECTION CONTROL RISK ASSESSMENT:

LOW TO HIGH RISK LEVEL

TYPE B ACTIVITY

LEVEL II/III/IV CONTROL PROCEDURES

INFECTION CONTROL RISK ASSESSMENT NOTES:

* OBTAIN INFECTION CONTROL PERMIT BEFORE CONSTRUCTION BEGINS. ISOLATE HVAC SYSTEM IN AREA WHERE WORK IS BEING DONE TO PREVENT CONTAMINATION OF THE DUCT SYSTEM. COMPLETE ALL CRITICAL BARRIERS OR IMPLEMENT CONTROL CUBE METHOD BEFORE CONSTRUCTION BEGINS. MAINTAIN NEGATIVE AIR PRESSURE WITHIN WORK SITE UTILIZING HEPA EQUIPPED AIR FILTRATION UNITS. SEAL HOLES, PIPES, CONDUITS, AND PUNCTURES APPROPRIATELY. DO NOT REMOVE BARRIERS FROM WORK AREA UNTIL COMPLETED PROJECT IS INSPECTED BY THE OWNER'S SAFETY DEPARTMENT AND THOROUGHLY CLEANED BY THE OWNER'S ENVIRONMENTAL SERVICES DEPARTMENT. REMOVE BARRIER MATERIAL CAREFULLY TO MINIMIZE SPREADING OF DIRT AND DEBRIS ASSOCIATED WITH CONSTRUCTION. CONTAIN CONSTRUCTION WASTE BEFORE TRANSPORT IN TIGHTLY COVERED CONTAINERS. COVER TRANSPORT RECEPTACLES OR CARTS. TAPE COVERING UNLESS SOLID LID. VACUUM WORK AREA WITH HEPA FILTERED VACUUMS. WET MOP AREA WITH DISINFECTANT. REMOVE ISOLATION OF HVAC SYSTEM IN AREAS WHERE WORK IS BEING PERFORMED.

PHASING:

CONTRACTOR TO COMPLETE WORK DURING BUSINESS HOURS WHENEVER POSSIBLE. THE WORK IS NOT TO INTERFERE WITH PATIENT CARE. IF CERTAIN AREAS OF WORK NEED TO BE COMPLETED AFTER HOURS, IT WILL NEED TO BE COORDINATED WITH THE OWNER AND PHASED ACCORDINGLY. ENSURE EGRESS/ENTRANCE IS AVAILABLE AT ALL TIMES. COORDINATE ALL UTILITY SHUTDOWNS WITH COTR 3 OR MORE DAYS PRIOR TO SHUTDOWN.

PHASING SCHEDULE TO BE DETERMINED WITH END-USERS DURING THE DESIGN PHASE. AFTER HOURS WORK INCLUDES THE FOLLOWING AREAS: EMERGENCY DEPARTMENT

INTERIM LIFE SAFETY MEASURES NOTES (ILSM):

IF APPLICABLE:

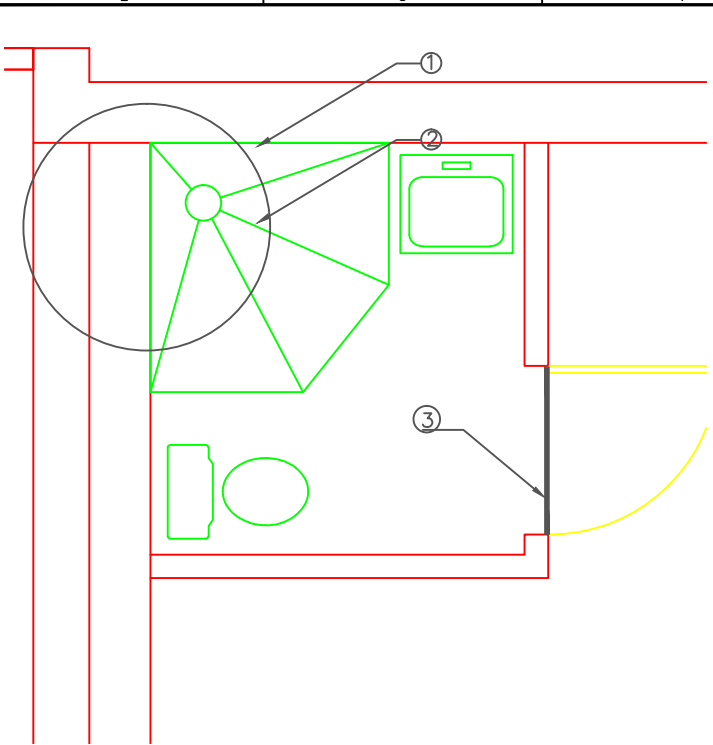
HOT WORK PERMITS. PERMITS MUST BE OBTAINED 24 HOURS PRIOR TO COMMENCEMENT OF WORK, WHENEVER POSSIBLE. ORIGINAL PERMIT TO BE POSTED WHERE WORK IS BEING PERFORMED; CONTRACTOR MUST RETURN PERMIT TO SAFETY OFFICE WHEN WORK IS COMPLETED.

FIRE WATCH. CONTRACTOR MUST INITIAL, DATE AND TIME EVERY 30 MINUTES AFTER HOT WORK HAS STARTED.

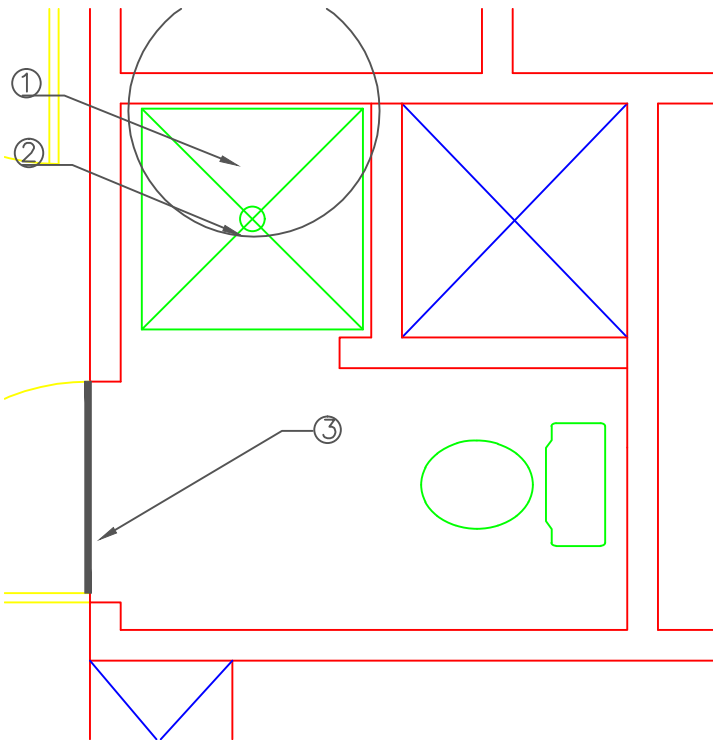
SPRINKLER WORK. CONTRACTOR TO OBTAIN HOT WORK PERMIT PRIOR TO ANY WORK CONSISTING OF CUTTING, WELDING, SOLDERING, BRAZING, ETC IS PERFORMED OR WHEN SPRINKLER SYSTEM IS COMPROMISED FOR MORE THAN FOUR (4) HOURS.

CONTRACTOR TO PROVIDE WARNING SIGNAGE AND DIRECTIONAL SIGNAGE THAT SHALL BE POSTED IN CONSTRUCTION AREA WHILE WORK IS PERFORMED.

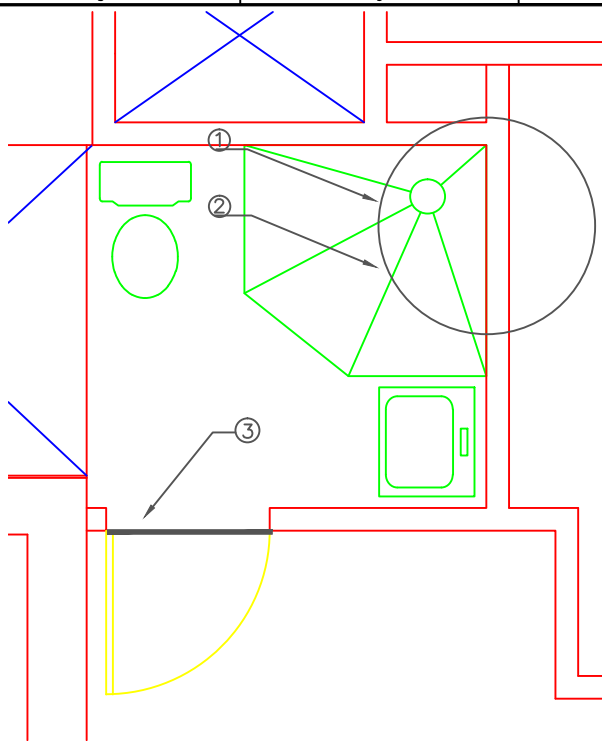
CONFINED SPACE. CONTRACTOR TO OBTAIN CONFINED SPACE PERMIT PRIOR TO ENTRY INTO MECHANICAL CHASE. ENSURE IT IS APPROVED BY VA SAFETY DEPARTMENT AND COTR.



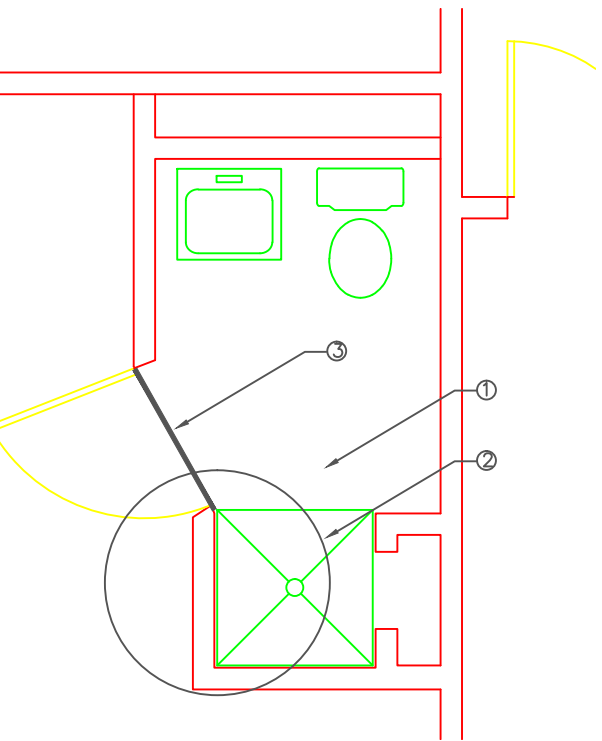
**BUILDING 1 - 4D122A
DEMOLITION FLOOR PLAN**



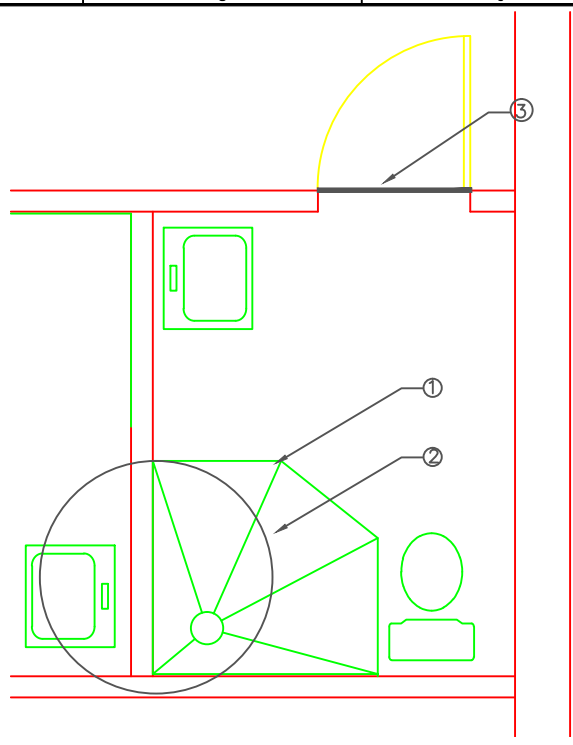
**BUILDING 1 - 5C131A
DEMOLITION FLOOR PLAN**



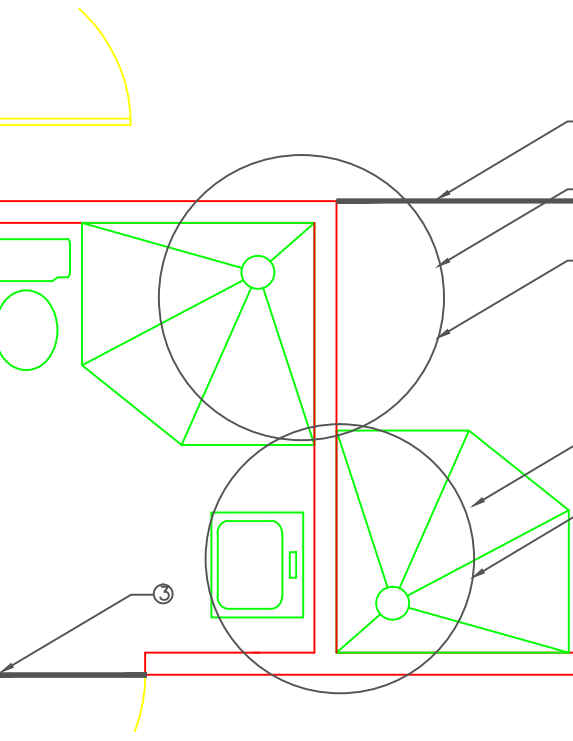
**BUILDING 1 - 4D133A
DEMOLITION FLOOR PLAN**



**BUILDING 1 - 5C125A
DEMOLITION FLOOR PLAN**



**BUILDING 1 - 5D106A
DEMOLITION FLOOR PLAN**



**BUILDING 1 - 5C120A AND 5C121A
DEMOLITION FLOOR PLAN**

REV	50% DESIGN REVIEW PACKAGE	4.27.12
By	Revisions	Date

- PLOTTING NOTES:**
- FULL SIZE V.A. "E" SHEET (AS INDICATED)
 - HALF SIZE V.A. "D" SHEET (1/2 THE INDICATED SCALE)
 - LETTER SIZE: (NOT SCALE)

- GENERAL NOTES:**
- SCALED DIMENSIONS & ARCHITECTURAL FEATURES MAY NOT BE CORRECT.
 - CONTRACTORS & A/E's ARE RESPONSIBLE TO FIELD VERIFY ALL DIMENSIONS WITHIN THE PROJECT AREA.

DEPARTMENT OF VETERANS AFFAIRS
MEDICAL CENTER
1055 Clermont Street
Denver, Colorado, 80220

Drawing Title		Project Title		Date
SHOWER SEATING DEMO FLOOR PLANS		FY12 FACILITY IMPROVEMENTS		4.30.12
Approved: Service Chief	Drawn AYJ	Building Number 1	Title Block By ska	Project No. 554-12-803
Approved: Section Chief	Checked N/A	Wing C,D	DRAWING No A101	Dwg 3 Of 13

Department of
Veterans Affairs

PLAN KEY NOTES

1. INSTALL APP 5 SQFT OF NEW CERAMIC TILE. MATCH EXISTING. PROVIDE NEW CONCEALED WALL BACKING (FOR NEW SHOWER SEATS) AND WATER-RESISTANT DRY WALL. NEW TILE:

A. 11.5" x 11.5" INTERCERAMIC CEMENTI, COLOR: MAROONE
B. 11.5" x 11.5" INTERCERAMIC CEMENTI, COLOR: COCOA
C. 11.5" x 11.5" INTERCERAMIC CEMENTI, COLOR: CANVAS

2. PROVIDE NEW HOSPITAL GRADE BARIATRIC SHOWER SEAT, SUPPORTING MINIMUM 1000LBF. ENSURE SHOWER AREA ACCOMMODATES NEW SHOWER SEAT DIMENSIONS.

INFECTION CONTROL RISK ASSESSMENT:

- LOW TO HIGH RISK LEVEL
- TYPE B ACTIVITY
- LEVEL II/III/IV CONTROL PROCEDURES

INFECTION CONTROL RISK ASSESSMENT NOTES:

* OBTAIN INFECTION CONTROL PERMIT BEFORE CONSTRUCTION BEGINS. ISOLATE HVAC SYSTEM IN AREA WHERE WORK IS BEING DONE TO PREVENT CONTAMINATION OF THE DUCT SYSTEM. COMPLETE ALL CRITICAL BARRIERS OR IMPLEMENT CONTROL CUBE METHOD BEFORE CONSTRUCTION BEGINS. MAINTAIN NEGATIVE AIR PRESSURE WITHIN WORK SITE UTILIZING HEPA EQUIPPED AIR FILTRATION UNITS. SEAL HOLES, PIPES, CONDUITS, AND PUNCTURES APPROPRIATELY. DO NOT REMOVE BARRIERS FROM WORK AREA UNTIL COMPLETED PROJECT IS INSPECTED BY THE OWNER'S SAFETY DEPARTMENT AND THOROUGHLY CLEANED BY THE OWNER'S ENVIRONMENTAL SERVICES DEPARTMENT. REMOVE BARRIER MATERIAL CAREFULLY TO MINIMIZE SPREADING OF DIRT AND DEBRIS ASSOCIATED WITH CONSTRUCTION. CONTAIN CONSTRUCTION WASTE BEFORE TRANSPORT IN TIGHTLY COVERED CONTAINERS. COVER TRANSPORT RECEPTACLES OR CARTS. TAPE COVERING UNLESS SOLID LID. VACUUM WORK AREA WITH HEPA FILTERED VACUUMS. WET MOP AREA WITH DISINFECTANT. REMOVE ISOLATION OF HVAC SYSTEM IN AREAS WHERE WORK IS BEING PERFORMED.

PHASING:

CONTRACTOR TO COMPLETE WORK DURING BUSINESS HOURS WHENEVER POSSIBLE. THE WORK IS NOT TO INTERFERE WITH PATIENT CARE. IF CERTAIN AREAS OF WORK NEED TO BE COMPLETED AFTER HOURS, IT WILL NEED TO BE COORDINATED WITH THE OWNER AND PHASED ACCORDINGLY. ENSURE EGRESS/ENTRANCE IS AVAILABLE AT ALL TIMES. COORDINATE ALL UTILITY SHUTDOWNS WITH COTR 3 OR MORE DAYS PRIOR TO SHUTDOWN. PHASING SCHEDULE TO BE DETERMINED WITH END-USERS DURING THE DESIGN PHASE. AFTER HOURS WORK INCLUDES THE FOLLOWING AREAS: EMERGENCY DEPARTMENT

INTERIM LIFE SAFETY MEASURES NOTES (ILSM):

IF APPLICABLE:

HOT WORK PERMITS. PERMITS MUST BE OBTAINED 24 HOURS PRIOR TO COMMENCEMENT OF WORK, WHENEVER POSSIBLE. ORIGINAL PERMIT TO BE POSTED WHERE WORK IS BEING PERFORMED; CONTRACTOR MUST RETURN PERMIT TO SAFETY OFFICE WHEN WORK IS COMPLETED.

FIRE WATCH. CONTRACTOR MUST INITIAL, DATE AND TIME EVERY 30 MINUTES AFTER HOT WORK HAS STARTED.

SPRINKLER WORK. CONTRACTOR TO OBTAIN HOT WORK PERMIT PRIOR TO ANY WORK CONSISTING OF CUTTING, WELDING, SOLDERING, BRAZING, ETC IS PERFORMED OR WHEN SPRINKLER SYSTEM IS COMPROMISED FOR MORE THAN FOUR (4) HOURS.

CONTRACTOR TO PROVIDE WARNING SIGNAGE AND DIRECTIONAL SIGNAGE THAT SHALL BE POSTED IN CONSTRUCTION AREA WHILE WORK IS PERFORMED.

CONFINED SPACE. CONTRACTOR TO OBTAIN CONFINED SPACE PERMIT PRIOR TO ENTRY INTO MECHANICAL CHASE. ENSURE IT IS APPROVED BY VA SAFETY DEPARTMENT AND COTR.

REV	50% DESIGN REVIEW PACKAGE	4.27.12
By	Revisions	Date

PLOTTING NOTES:

1. FULL SIZE V.A. "E" SHEET (AS INDICATED)
2. HALF SIZE V.A. "D" SHEET (1/2 THE INDICATED SCALE)
3. LETTER SIZE: (NOT SCALE)

GENERAL NOTES:

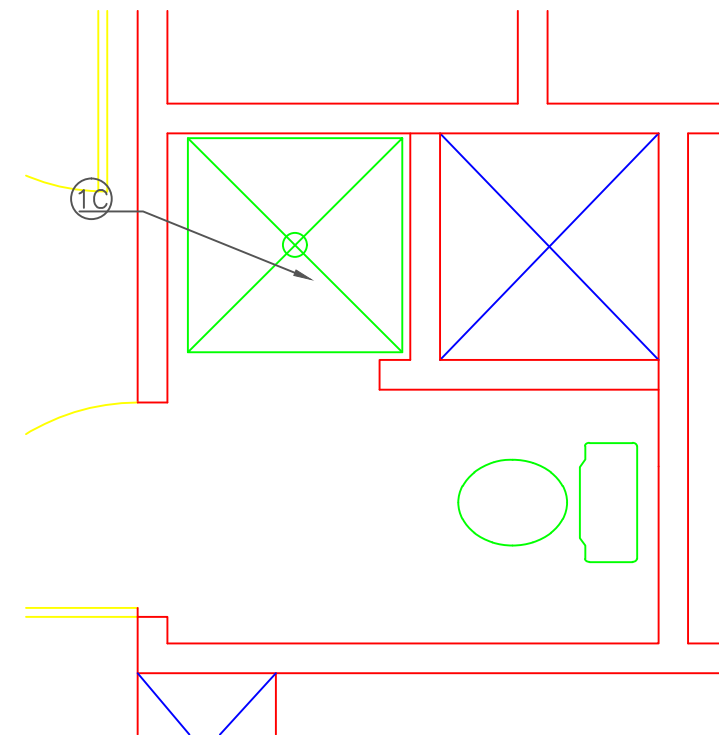
1. SCALED DIMENSIONS & ARCHITECTURAL FEATURES MAY NOT BE CORRECT.
2. CONTRACTORS & A/E's ARE RESPONSIBLE TO FIELD VERIFY ALL DIMENSIONS WITHIN THE PROJECT AREA.

DEPARTMENT OF VETERANS AFFAIRS
MEDICAL CENTER
1055 Clermont Street
Denver, Colorado, 80220

Drawing Title SHOWER SEATING ARCHITECTURAL FLOOR PLANS		Project Title FY12 FACILITY IMPROVEMENTS		Date 4.30.12
Approved: Service Chief		Building Number 1		Project No. 554-12-803
Approved: Section Chief		Wing C,D		DRAWING No. A102
Drawn AYJ		Title Block By ska		Dwg 4 Of 13
Checked N/A		Department of Veterans Affairs		

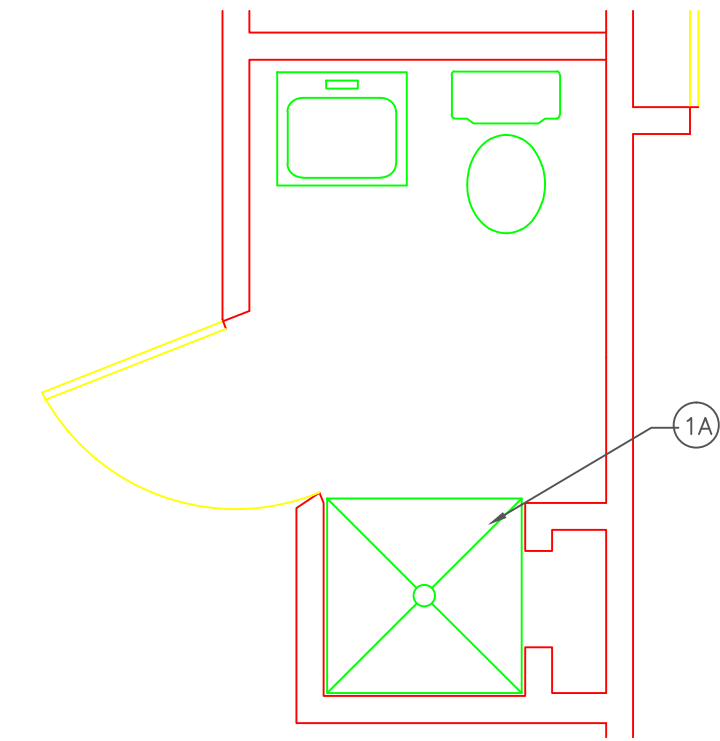
**BUILDING 1 - 4D122A
ARCHITECTURAL FLOOR PLAN**

1 A102
SCALE: N/A



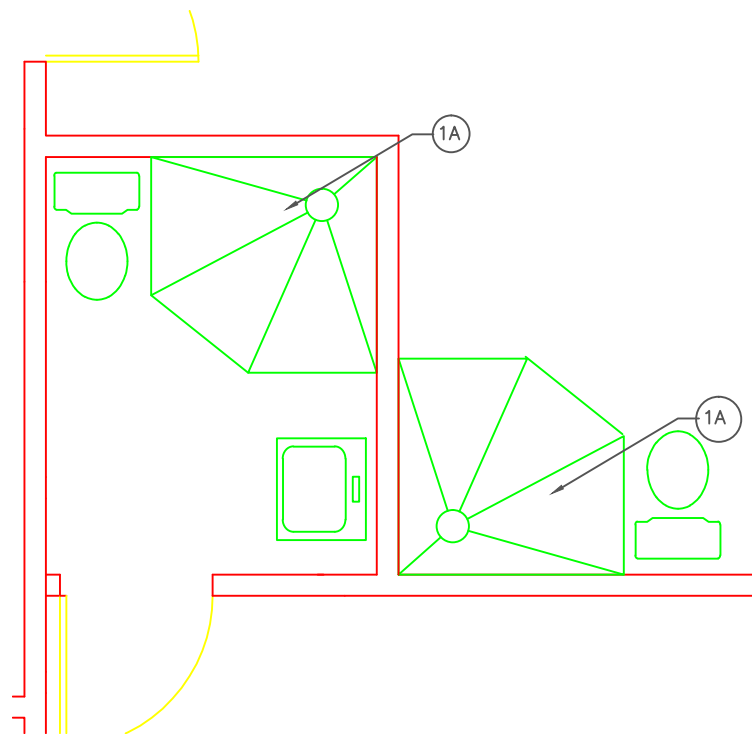
**BUILDING 1 - 4D13A
ARCHITECTURAL FLOOR PLAN**

2 A102
SCALE: N/A



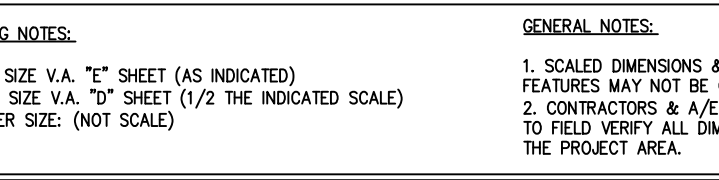
**BUILDING 1 - 5D106A
ARCHITECTURAL FLOOR PLAN**

3 A102
SCALE: N/A



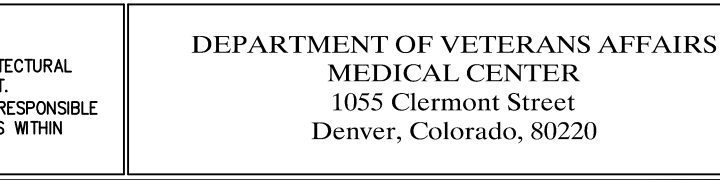
**BUILDING 1 - 5C131A
ARCHITECTURAL FLOOR PLAN**

4 A102
SCALE: N/A



**BUILDING 1 - 5C125A
ARCHITECTURAL FLOOR PLAN**

5 A102
SCALE: N/A



**BUILDING 1 - 5C120A AND 5C121A
ARCHITECTURAL FLOOR PLAN**

6 A102
SCALE: N/A



PLAN KEY NOTES

1. DEMOLISH TILE WORK AROUND SHOWER FIXTURES TO ACCESS PIPING AS NEEDED. PATCH, REPAIR AND REPLACE TILEWORK (APP 16 SQF), DRYWALL, ETC. WHERE REMOVED. MATCH EXISTING.

2. REPAIR PLUMBING. INSTALL NEW FIXTURES. EXISTING SHOWER IS CURRENTLY INOPERABLE. CONTRACTOR TO INVESTIGATE PLUMBING ISSUES AND CORRECT ISSUES AS NEEDED.

3. INFECTION CONTROL: LOW RISK, TYPE B ACTIVITY. LEVEL II CONTROL PROCEDURES.

INFECTION CONTROL RISK ASSESSMENT:

– LOW TO HIGH RISK LEVEL

– TYPE B ACTIVITY

– LEVEL II/III/IV CONTROL PROCEDURES

INFECTION CONTROL RISK ASSESSMENT NOTES:

* OBTAIN INFECTION CONTROL PERMIT BEFORE CONSTRUCTION BEGINS. ISOLATE HVAC SYSTEM IN AREA WHERE WORK IS BEING DONE TO PREVENT CONTAMINATION OF THE DUCT SYSTEM. COMPLETE ALL CRITICAL BARRIERS OR IMPLEMENT CONTROL CUBE METHOD BEFORE CONSTRUCTION BEGINS. MAINTAIN NEGATIVE AIR PRESSURE WITHIN WORK SITE UTILIZING HEPA EQUIPPED AIR FILTRATION UNITS. SEAL HOLES, PIPES, CONDUITS, AND PUNCTURES APPROPRIATELY. DO NOT REMOVE BARRIERS FROM WORK AREA UNTIL COMPLETED PROJECT IS INSPECTED BY THE OWNER'S SAFETY DEPARTMENT AND THOROUGHLY CLEANED BY THE OWNER'S ENVIRONMENTAL SERVICES DEPARTMENT. REMOVE BARRIER MATERIAL CAREFULLY TO MINIMIZE SPREADING OF DIRT AND DEBRIS ASSOCIATED WITH CONSTRUCTION. CONTAIN CONSTRUCTION WASTE BEFORE TRANSPORT IN TIGHTLY COVERED CONTAINERS. COVER TRANSPORT RECEPTACLES OR CARTS. TAPE COVERING UNLESS SOLID LID. VACUUM WORK AREA WITH HEPA FILTERED VACUUMS. WET MOP AREA WITH DISINFECTANT. REMOVE ISOLATION OF HVAC SYSTEM IN AREAS WHERE WORK IS BEING PERFORMED.

PHASING:

CONTRACTOR TO COMPLETE WORK DURING BUSINESS HOURS WHENEVER POSSIBLE. THE WORK IS NOT TO INTERFERE WITH PATIENT CARE. IF CERTAIN AREAS OF WORK NEED TO BE COMPLETED AFTER HOURS, IT WILL NEED TO BE COORDINATED WITH THE OWNER AND PHASED ACCORDINGLY. ENSURE EGRESS/ENTRANCE IS AVAILABLE AT ALL TIMES. COORDINATE ALL UTILITY SHUTDOWNS WITH COTR 3 OR MORE DAYS PRIOR TO SHUTDOWN.

PHASING SCHEDULE TO BE DETERMINED WITH END-USERS DURING THE DESIGN PHASE. AFTER HOURS WORK INCLUDES THE FOLLOWING AREAS: EMERGENCY DEPARTMENT

INTERIM LIFE SAFETY MEASURES NOTES (ILSM):

IF APPLICABLE:

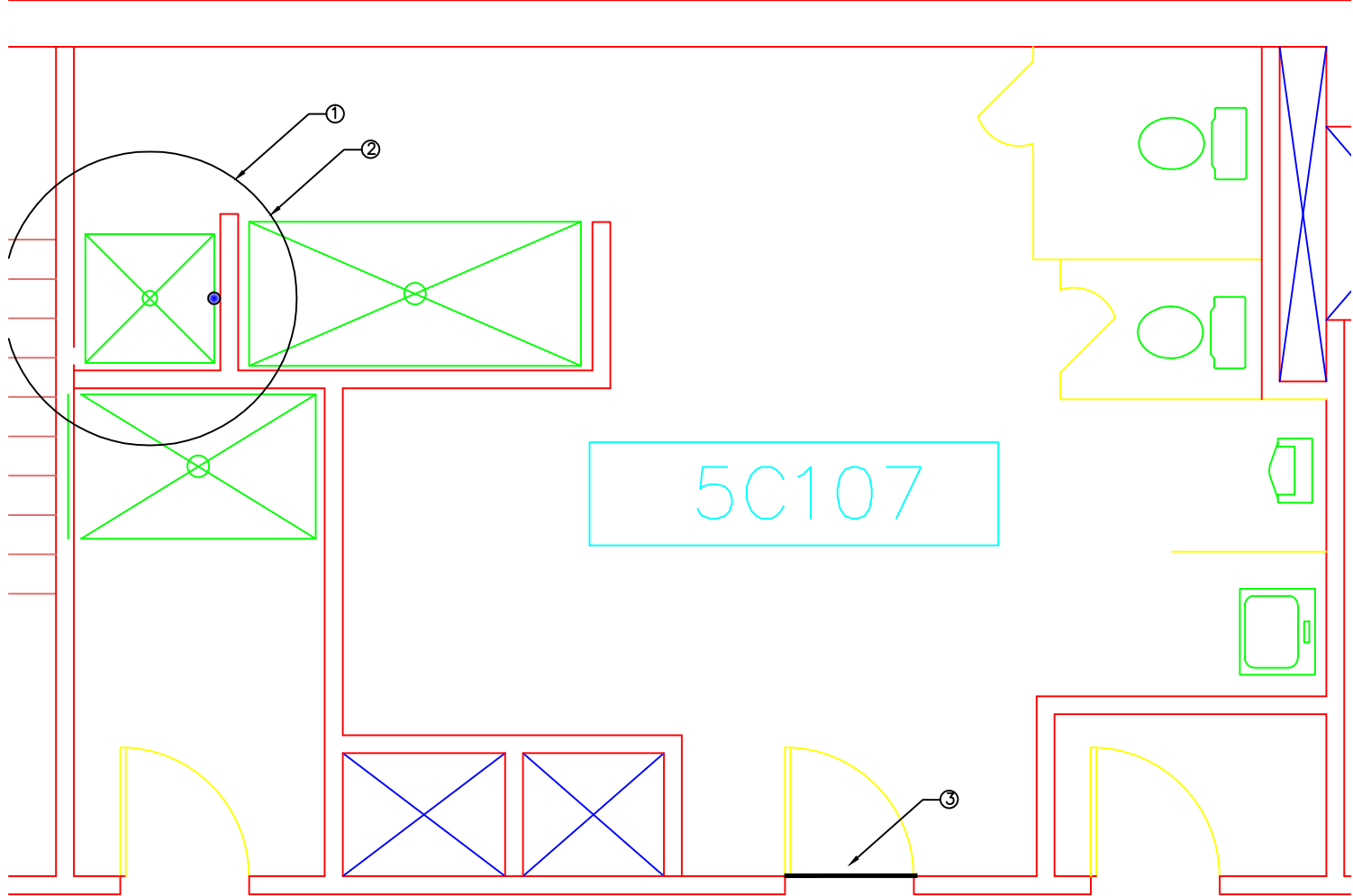
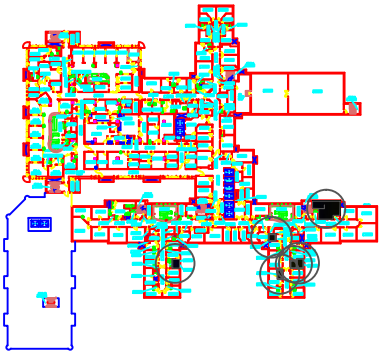
HOT WORK PERMITS. PERMITS MUST BE OBTAINED 24 HOURS PRIOR TO COMMENCEMENT OF WORK, WHENEVER POSSIBLE. ORIGINAL PERMIT TO BE POSTED WHERE WORK IS BEING PERFORMED; CONTRACTOR MUST RETURN PERMIT TO SAFETY OFFICE WHEN WORK IS COMPLETED.

FIRE WATCH. CONTRACTOR MUST INITIAL, DATE AND TIME EVERY 30 MINUTES AFTER HOT WORK HAS STARTED.

SPRINKLER WORK. CONTRACTOR TO OBTAIN HOT WORK PERMIT PRIOR TO ANY WORK CONSISTING OF CUTTING, WELDING, SOLDERING, BRAZING, ETC IS PERFORMED OR WHEN SPRINKLER SYSTEM IS COMPROMISED FOR MORE THAN FOUR (4) HOURS.

CONTRACTOR TO PROVIDE WARNING SIGNAGE AND DIRECTIONAL SIGNAGE THAT SHALL BE POSTED IN CONSTRUCTION AREA WHILE WORK IS PERFORMED.

CONFINED SPACE. CONTRACTOR TO OBTAIN CONFINED SPACE PERMIT PRIOR TO ENTRY INTO MECHANICAL CHASE. ENSURE IT IS APPROVED BY VA SAFETY DEPARTMENT AND COTR.



5C107-1 FLOOR PLANS

1 A103

SCALE: N/A

REV	50% DESIGN REVIEW PACKAGE	4.27.12
By	Revisions	Date

PLOTTING NOTES:

1. FULL SIZE V.A. "E" SHEET (AS INDICATED)

2. HALF SIZE V.A. "D" SHEET (1/2 THE INDICATED SCALE)

3. LETTER SIZE: (NOT SCALE)

GENERAL NOTES:

1. SCALED DIMENSIONS & ARCHITECTURAL FEATURES MAY NOT BE CORRECT.

2. CONTRACTORS & A/E's ARE RESPONSIBLE TO FIELD VERIFY ALL DIMENSIONS WITHIN THE PROJECT AREA.

DEPARTMENT OF VETERANS AFFAIRS

MEDICAL CENTER

1055 Clermont Street

Denver, Colorado, 80220

Drawing Title		Project Title		Date
5C107-1 FLOOR PLAN		FY12 FACILITY IMPROVEMENTS		4.30.12
Approved: Service Chief		Building Number	Title Block By	Project No.
Approved: Section Chief		1	ska	554-12-803
Checked N/A		Wing	DRAWING No	A103
		C	Dwg	5 Of 13

Department of Veterans Affairs

PLAN KEY NOTES

1. INSTALL NEW AUTOMATIC DOOR OPENER SYSTEMS ON DESIGNATED DOORS AS INDICATED.

2. COORDINATE ALL ELECTRICAL REQUIREMENTS WITH VA FMS ELECTRICIANS.

3. SOME DEMOLITION OF CMU WALL MAY BE REQUIRED TO INSTALL NEW SYSTEM AND ROUTE NEW ELECTRICAL WORK. PAINT, PATCH AND REPAIR WALL(S) AS NEEDED.

4. INFECTION CONTROL: LOW RISK, TYPE B ACTIVITY. LEVEL II CONTROL PROCEDURES.

INFECTION CONTROL RISK ASSESSMENT:

- LOW TO HIGH RISK LEVEL

- TYPE B ACTIVITY

- LEVEL II/III/IV CONTROL PROCEDURES

INFECTION CONTROL RISK ASSESSMENT NOTES:

* OBTAIN INFECTION CONTROL PERMIT BEFORE CONSTRUCTION BEGINS. ISOLATE HVAC SYSTEM IN AREA WHERE WORK IS BEING DONE TO PREVENT CONTAMINATION OF THE DUCT SYSTEM. COMPLETE ALL CRITICAL BARRIERS OR IMPLEMENT CONTROL CUBE METHOD BEFORE CONSTRUCTION BEGINS. MAINTAIN NEGATIVE AIR PRESSURE WITHIN WORK SITE UTILIZING HEPA EQUIPPED AIR FILTRATION UNITS. SEAL HOLES, PIPES, CONDUITS, AND PUNCTURES APPROPRIATELY. DO NOT REMOVE BARRIERS FROM WORK AREA UNTIL COMPLETED PROJECT IS INSPECTED BY THE OWNER'S SAFETY DEPARTMENT AND THOROUGHLY CLEANED BY THE OWNER'S ENVIRONMENTAL SERVICES DEPARTMENT. REMOVE BARRIER MATERIAL CAREFULLY TO MINIMIZE SPREADING OF DIRT AND DEBRIS ASSOCIATED WITH CONSTRUCTION. CONTAIN CONSTRUCTION WASTE BEFORE TRANSPORT IN TIGHTLY COVERED CONTAINERS. COVER TRANSPORT RECEPTACLES OR CARTS. TAPE COVERING UNLESS SECURED LID. VACUUM WORK AREA WITH HEPA FILTERED VACUUMS. WET MOP AREA WITH DISINFECTANT. REMOVE ISOLATION OF HVAC SYSTEM IN AREAS WHERE WORK IS BEING PERFORMED.

PHASING:

CONTRACTOR TO COMPLETE WORK DURING BUSINESS HOURS WHENEVER POSSIBLE. THE WORK IS NOT TO INTERFERE WITH PATIENT CARE. IF CERTAIN AREA OF WORK NEED TO BE COMPLETED AFTER HOURS, IT WILL NEED TO BE COORDINATED WITH THE OWNER AND PHASED ACCORDINGLY. ENSURE EGRESS/ENTRANCE IS AVAILABLE AT ALL TIMES. COORDINATE ALL UTILITY SHUTDOWNS WITH COTR 3 OR MORE DAYS PRIOR TO SHUTDOWN.

PHASING SCHEDULE TO BE DETERMINED WITH END-USER'S DURING THE DESIGN PHASE.

AFTER HOURS WORK INCLUDES THE FOLLOWING AREAS: EMERGENCY DEPARTMENT

INTERIM LIFE SAFETY MEASURES NOTES (ILSM):

IF APPLICABLE:

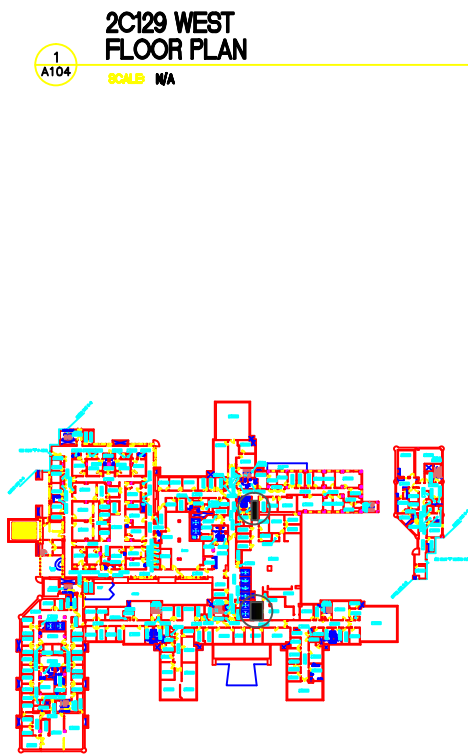
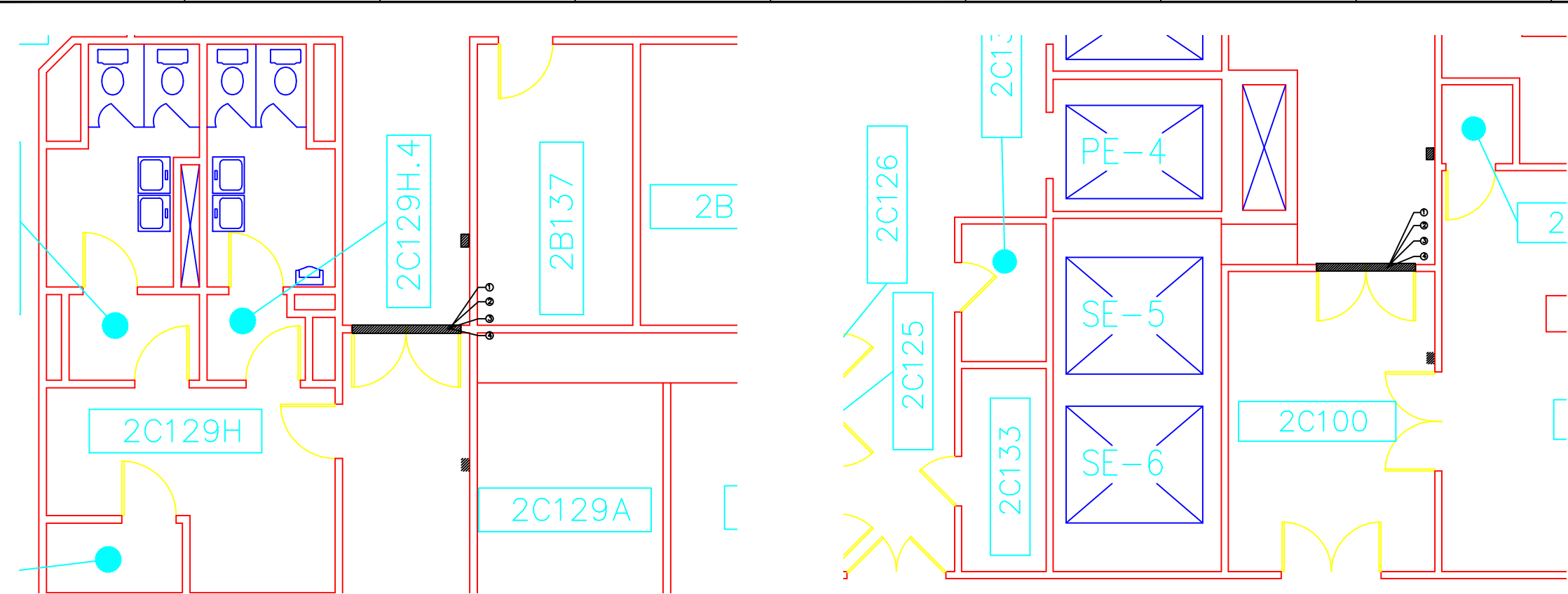
HOT WORK PERMITS. PERMITS MUST BE OBTAINED 24 HOURS PRIOR TO COMMENCEMENT OF WORK, WHENEVER POSSIBLE. ORIGINAL PERMIT TO BE POSTED WHERE WORK IS BEING PERFORMED; CONTRACTOR MUST RETURN PERMIT TO SAFETY OFFICE WHEN WORK IS COMPLETED.

FIRE WATCH. CONTRACTOR MUST INITIAL, DATE AND TIME EVERY 30 MINUTES AFTER HOT WORK HAS STARTED.

SPRINKLER WORK. CONTRACTOR TO OBTAIN HOT WORK PERMIT PRIOR TO ANY WORK CONSISTING OF CUTTING, WELDING, SOLDERING, BRAZING, ETC IS PERFORMED OR WHEN SPRINKLER SYSTEM IS COMPROMISED FOR MORE THAN FOUR (4) HOURS.

CONTRACTOR TO PROVIDE WARNING SIGNAGE AND DIRECTIONAL SIGNAGE THAT SHALL BE POSTED IN CONSTRUCTION AREA WHILE WORK IS PERFORMED.

CONFINED SPACE. CONTRACTOR TO OBTAIN CONFINED SPACE PERMIT PRIOR TO ENTRY INTO MECHANICAL CHASE. ENSURE IT IS APPROVED BY VA SAFETY DEPARTMENT AND COTR.



REV	50% DESIGN REVIEW PACKAGE	4.27.12
By	Revisions	Date

PLOTTING NOTES:

1. FULL SIZE V.A. "E" SHEET (AS INDICATED)

2. HALF SIZE V.A. "D" SHEET (1/2 THE INDICATED SCALE)

3. LETTER SIZE: (NOT SCALE)

GENERAL NOTES:

1. SCALED DIMENSIONS & ARCHITECTURAL FEATURES MAY NOT BE CORRECT.

2. CONTRACTORS & A/E's ARE RESPONSIBLE TO FIELD VERIFY ALL DIMENSIONS WITHIN THE PROJECT AREA.

DEPARTMENT OF VETERANS AFFAIRS MEDICAL CENTER 1055 Clermont Street Denver, Colorado, 80220		Drawing Title 2C129 EAST AND WEST FLOOR PLAN	Project Title FY12 FACILITY IMPROVEMENTS	Date 4.30.12	Department of Veterans Affairs
Approved: Service Chief	Drawn AYJ	Building Number 1	Title Block By ska	Project No. 554-12-803	
Approved: Section Chief	Checked N/A	Wing C		DRAWING No A104	
				Dwg 6 Of 13	

PLAN KEY NOTES

1. INSTALL NEW HID CARD READER SYSTEM FOR DESIGNATED DOORS. READERS MUST READ PIV BADGES. AND INTERFACE WITH EXISTING LEVEL CARD READER SYSTEM.

2. MODIFY (E) AND/OR INSTALL (N) DOOR HARDWARE TO ACCOMMODATE NEW CARD READER FUNCTION. HARDWARE INCLUDES, BUT NOT LIMITED TO ELECTRICAL STRIKES, ETC.

3. COORDINATE ALL ELECTRICAL WORK WITH VA FMS ELECTRICIANS.

4. PAINT, PATCH AND REPAIR WALLS AS NECESSARY.

5. INFECTION CONTROL: LOW RISK, TYPE B, LEVEL II PROCEDURES.

INFECTION CONTROL RISK ASSESSMENT:

- LOW TO HIGH RISK LEVEL

- TYPE B ACTIVITY

- LEVEL II/III/IV CONTROL PROCEDURES

INFECTION CONTROL RISK ASSESSMENT NOTES:

* OBTAIN INFECTION CONTROL PERMIT BEFORE CONSTRUCTION BEGINS. ISOLATE HVAC SYSTEM IN AREA WHERE WORK IS BEING DONE TO PREVENT CONTAMINATION OF THE DUCT SYSTEM. COMPLETE ALL CRITICAL BARRIERS OR IMPLEMENT CONTROL CUBE METHOD BEFORE CONSTRUCTION BEGINS. MAINTAIN NEGATIVE AIR PRESSURE WITHIN WORK SITE UTILIZING HEPA EQUIPPED AIR FILTRATION UNITS. SEAL HOLES, PIPES, CONDUITS, AND PUNCTURES APPROPRIATELY. DO NOT REMOVE BARRIERS FROM WORK AREA UNTIL COMPLETED PROJECT IS INSPECTED BY THE OWNER'S SAFETY DEPARTMENT AND THOROUGHLY CLEANED BY THE OWNER'S ENVIRONMENTAL SERVICES DEPARTMENT. REMOVE BARRIER MATERIAL CAREFULLY TO MINIMIZE SPREADING OF DIRT AND DEBRIS ASSOCIATED WITH CONSTRUCTION. CONTAIN CONSTRUCTION WASTE BEFORE TRANSPORT IN TIGHTLY COVERED CONTAINERS. COVER TRANSPORT RECEPTACLES OR CARTS. TAPE COVERING UNLESS SOLID LID. VACUUM WORK AREA WITH HEPA FILTERED VACUUMS. WET MOP AREA WITH DISINFECTANT. REMOVE ISOLATION OF HVAC SYSTEM IN AREAS WHERE WORK IS BEING PERFORMED.

PHASING:

CONTRACTOR TO COMPLETE WORK DURING BUSINESS HOURS WHENEVER POSSIBLE. THE WORK IS NOT TO INTERFERE WITH PATIENT CARE. IF CERTAIN AREAS OF WORK NEED TO BE COMPLETED AFTER HOURS, IT WILL NEED TO BE COORDINATED WITH THE OWNER AND PHASED ACCORDINGLY. ENSURE EGRESS/ENTRANCE IS AVAILABLE AT ALL TIMES. COORDINATE ALL UTILITY SHUTDOWNS WITH COTR 3 OR MORE DAYS PRIOR TO SHUTDOWN. PHASING SCHEDULE TO BE DETERMINED WITH END-USERS DURING THE DESIGN PHASE. AFTER HOURS WORK INCLUDES THE FOLLOWING AREAS: EMERGENCY DEPARTMENT

INTERIM LIFE SAFETY MEASURES NOTES (ILSM):

IF APPLICABLE:

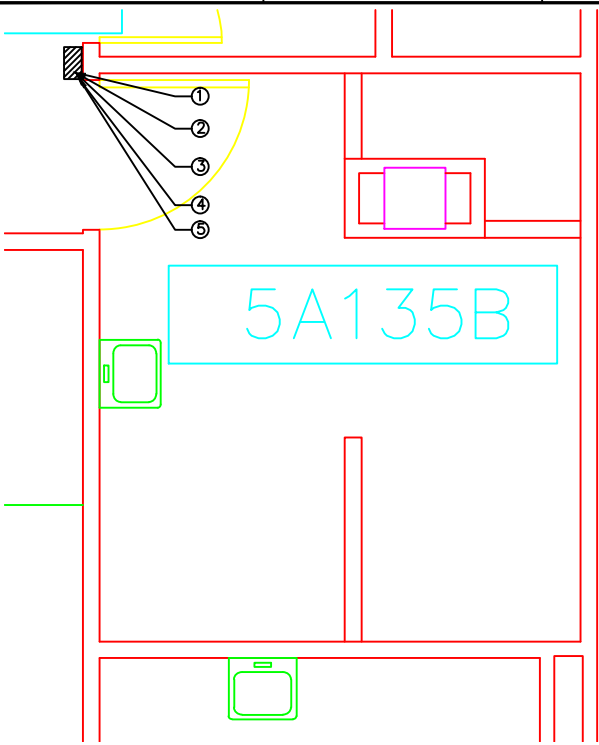
HOT WORK PERMITS. PERMITS MUST BE OBTAINED 24 HOURS PRIOR TO COMMENCEMENT OF WORK, WHENEVER POSSIBLE. ORIGINAL PERMIT TO BE POSTED WHERE WORK IS BEING PERFORMED; CONTRACTOR MUST RETURN PERMIT TO SAFETY OFFICE WHEN WORK IS COMPLETED.

FIRE WATCH. CONTRACTOR MUST INITIAL, DATE AND TIME EVERY 30 MINUTES AFTER HOT WORK HAS STARTED.

SPRINKLER WORK. CONTRACTOR TO OBTAIN HOT WORK PERMIT PRIOR TO ANY WORK CONSISTING OF CUTTING, WELDING, SOLDERING, BRAZING, ETC IS PERFORMED OR WHEN SPRINKLER SYSTEM IS COMPROMISED FOR MORE THAN FOUR (4) HOURS.

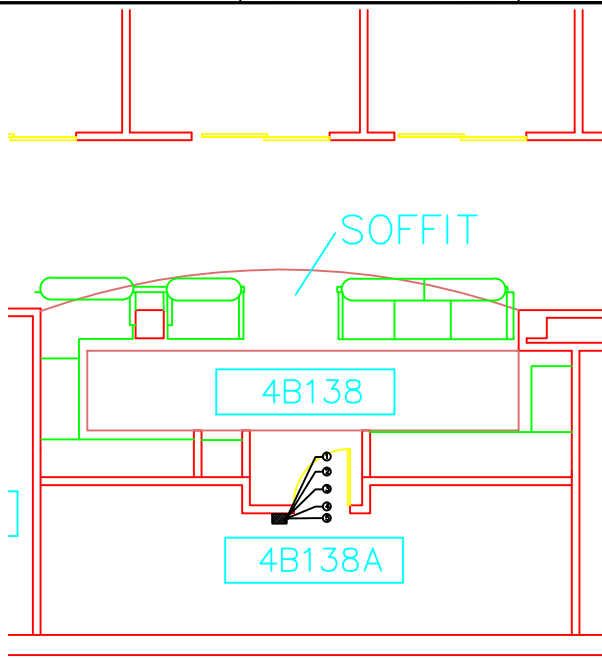
CONTRACTOR TO PROVIDE WARNING SIGNAGE AND DIRECTIONAL SIGNAGE THAT SHALL BE POSTED IN CONSTRUCTION AREA WHILE WORK IS PERFORMED.

CONFINED SPACE. CONTRACTOR TO OBTAIN CONFINED SPACE PERMIT PRIOR TO ENTRY INTO MECHANICAL CHASE. ENSURE IT IS APPROVED BY VA SAFETY DEPARTMENT AND COTR.



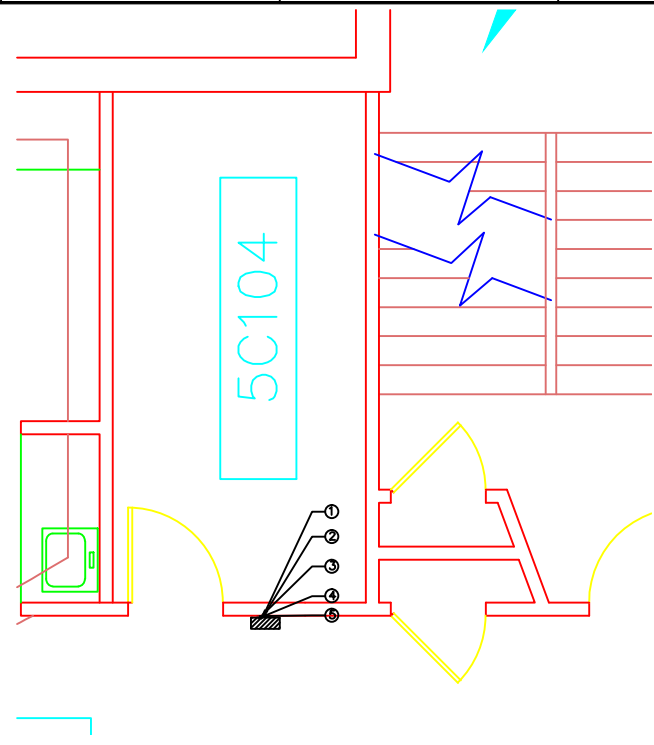
BUILDING 1 - 5A135B FLOOR PLAN

1 A105
SCALE: N/A



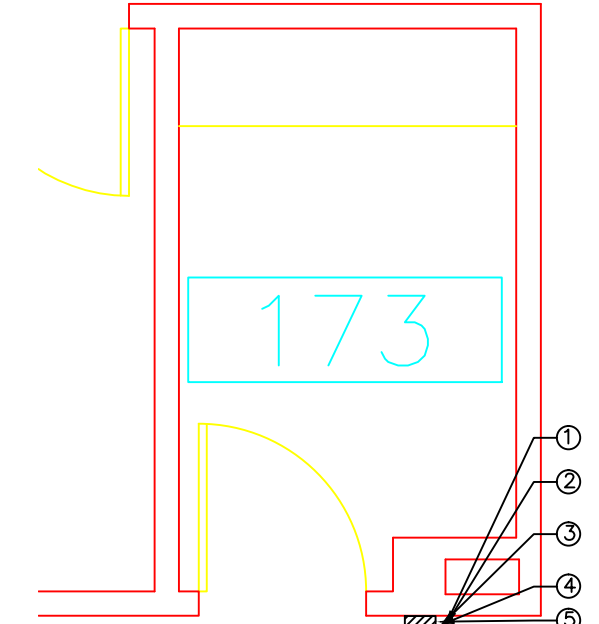
BUILDING 1 - 4B138A FLOOR PLAN

2 A105
SCALE: N/A



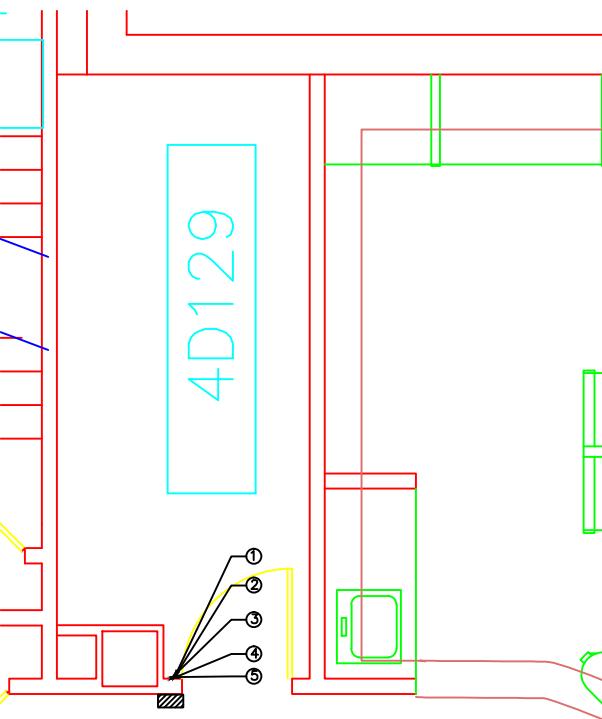
BUILDING 1 - 5C104 FLOOR PLAN

3 A105
SCALE: N/A



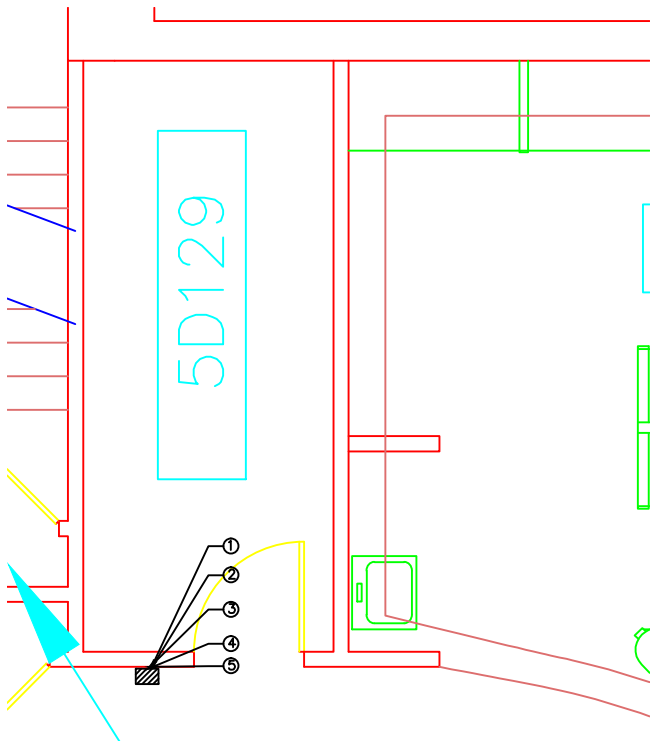
BUILDING 1 - 173 FLOOR PLAN

6 A105
SCALE: N/A



BUILDING 1 - 4D129 FLOOR PLAN

4 A105
SCALE: N/A



BUILDING 1 - 5D129 FLOOR PLAN

5 A105
SCALE: N/A

REV	50% DESIGN REVIEW PACKAGE	4.27.12
By	Revisions	Date

PLOTTING NOTES:

1. FULL SIZE V.A. "E" SHEET (AS INDICATED)

2. HALF SIZE V.A. "D" SHEET (1/2 THE INDICATED SCALE)

3. LETTER SIZE: (NOT SCALE)

GENERAL NOTES:

1. SCALED DIMENSIONS & ARCHITECTURAL FEATURES MAY NOT BE CORRECT.

2. CONTRACTORS & A/E's ARE RESPONSIBLE TO FIELD VERIFY ALL DIMENSIONS WITHIN THE PROJECT AREA.

DEPARTMENT OF VETERANS AFFAIRS
MEDICAL CENTER
1055 Clermont Street
Denver, Colorado, 80220

Drawing Title CARD READERS MED/SUPPLY FLOOR PLANS		Project Title FY12 FACILITY IMPROVEMENTS		Date 4.30.12
Approved: Service Chief		Building Number 1		Project No. 554-12-803
Approved: Section Chief		Wing A,B,C,D		DRAWING No. A105
Drawn AXJ		Title Block By ska		Dwg 7 Of 13
Checked N/A		Department of Veterans Affairs		

PLAN KEY NOTES

1. INSTALL (N) PRIVACY LOCKSET ON EXISTING DOORS. COORDINATE WORK WITH VA POLICE.
2. INSTALL (N) BALLISTIC WINDOWS REPLACE EXISTING.
3. INSTALL (N) BALLISTIC WALL PANELING.
4. REPLACE (E) AND INSTALL (N) BALLISTIC AUTOMATIC SLIDING GLASS DOORS. STRUCTURALLY REINFORCE WALL TO ACCOMMODATE NEW DOOR TYPE, WEIGHT, ETC. PROVIDE (N) ADO. COORDINATE ELECTRICAL WORK WITH VA FMS ELECTRICIANS.
5. INFECTION CONTROL: LOW RISK, TYPE B, LEVEL II PROCEDURES.

INFECTION CONTROL RISK ASSESSMENT:

- LOW TO HIGH RISK LEVEL
- TYPE B ACTIVITY
- LEVEL II/III/IV CONTROL PROCEDURES

INFECTION CONTROL RISK ASSESSMENT NOTES:

* OBTAIN INFECTION CONTROL PERMIT BEFORE CONSTRUCTION BEGINS. ISOLATE HVAC SYSTEM IN AREA WHERE WORK IS BEING DONE TO PREVENT CONTAMINATION OF THE DUCT SYSTEM. COMPLETE ALL CRITICAL BARRIERS OR IMPLEMENT CONTROL CUBE METHOD BEFORE CONSTRUCTION BEGINS. MAINTAIN NEGATIVE AIR PRESSURE WITHIN WORK SITE UTILIZING HEPA EQUIPPED AIR FILTRATION UNITS. SEAL HOLES, PIPES, CONDUITS, AND PUNCTURES APPROPRIATELY. DO NOT REMOVE BARRIERS FROM WORK AREA UNTIL COMPLETED PROJECT IS INSPECTED BY THE OWNER'S SAFETY DEPARTMENT AND THOROUGHLY CLEANED BY THE OWNER'S ENVIRONMENTAL SERVICES DEPARTMENT. REMOVE BARRIER MATERIAL CAREFULLY TO MINIMIZE SPREADING OF DIRT AND DEBRIS ASSOCIATED WITH CONSTRUCTION. CONTAIN CONSTRUCTION WASTE BEFORE TRANSPORT IN TIGHTLY COVERED CONTAINERS. COVER TRANSPORT RECEPTACLES OR CARTS. TAPE COVERING UNLESS SOLID LID. VACUUM WORK AREA WITH HEPA FILTERED VACUUMS. WET MOP AREA WITH DISINFECTANT. REMOVE ISOLATION OF HVAC SYSTEM IN AREAS WHERE WORK IS BEING PERFORMED.

PHASING:

CONTRACTOR TO COMPLETE WORK DURING BUSINESS HOURS WHENEVER POSSIBLE. THE WORK IS NOT TO INTERFERE WITH PATIENT CARE. IF CERTAIN AREAS OF WORK NEED TO BE COMPLETED AFTER HOURS, IT WILL NEED TO BE COORDINATED WITH THE OWNER AND PHASED ACCORDINGLY. ENSURE EGRESS/ENTRANCE IS AVAILABLE AT ALL TIMES. COORDINATE ALL UTILITY SHUTDOWNS WITH COTR 3 OR MORE DAYS PRIOR TO SHUTDOWN. PHASING SCHEDULE TO BE DETERMINED WITH END-USERS DURING THE DESIGN PHASE. AFTER HOURS WORK INCLUDES THE FOLLOWING AREAS: EMERGENCY DEPARTMENT

INTERIM LIFE SAFETY MEASURES NOTES (ILSM):

IF APPLICABLE:

HOT WORK PERMITS. PERMITS MUST BE OBTAINED 24 HOURS PRIOR TO COMMENCEMENT OF WORK, WHENEVER POSSIBLE. ORIGINAL PERMIT TO BE POSTED WHERE WORK IS BEING PERFORMED; CONTRACTOR MUST RETURN PERMIT TO SAFETY OFFICE WHEN WORK IS COMPLETED.
FIRE WATCH. CONTRACTOR MUST INITIAL, DATE AND TIME EVERY 30 MINUTES AFTER HOT WORK HAS STARTED.
SPRINKLER WORK. CONTRACTOR TO OBTAIN HOT WORK PERMIT PRIOR TO ANY WORK CONSISTING OF CUTTING, WELDING, SOLDERING, BRAZING, ETC IS PERFORMED OR WHEN SPRINKLER SYSTEM IS COMPROMISED FOR MORE THAN FOUR (4) HOURS.
CONTRACTOR TO PROVIDE WARNING SIGNAGE AND DIRECTIONAL SIGNAGE THAT SHALL BE POSTED IN CONSTRUCTION AREA WHILE WORK IS PERFORMED.
CONFINED SPACE. CONTRACTOR TO OBTAIN CONFINED SPACE PERMIT PRIOR TO ENTRY INTO MECHANICAL CHASE. ENSURE IT IS APPROVED BY VA SAFETY DEPARTMENT AND COTR.

REV	50% DESIGN REVIEW PACKAGE	4.27.12
By	Revisions	Date

PLOTTING NOTES:

1. FULL SIZE V.A. "E" SHEET (AS INDICATED)
2. HALF SIZE V.A. "D" SHEET (1/2 THE INDICATED SCALE)
3. LETTER SIZE: (NOT SCALE)

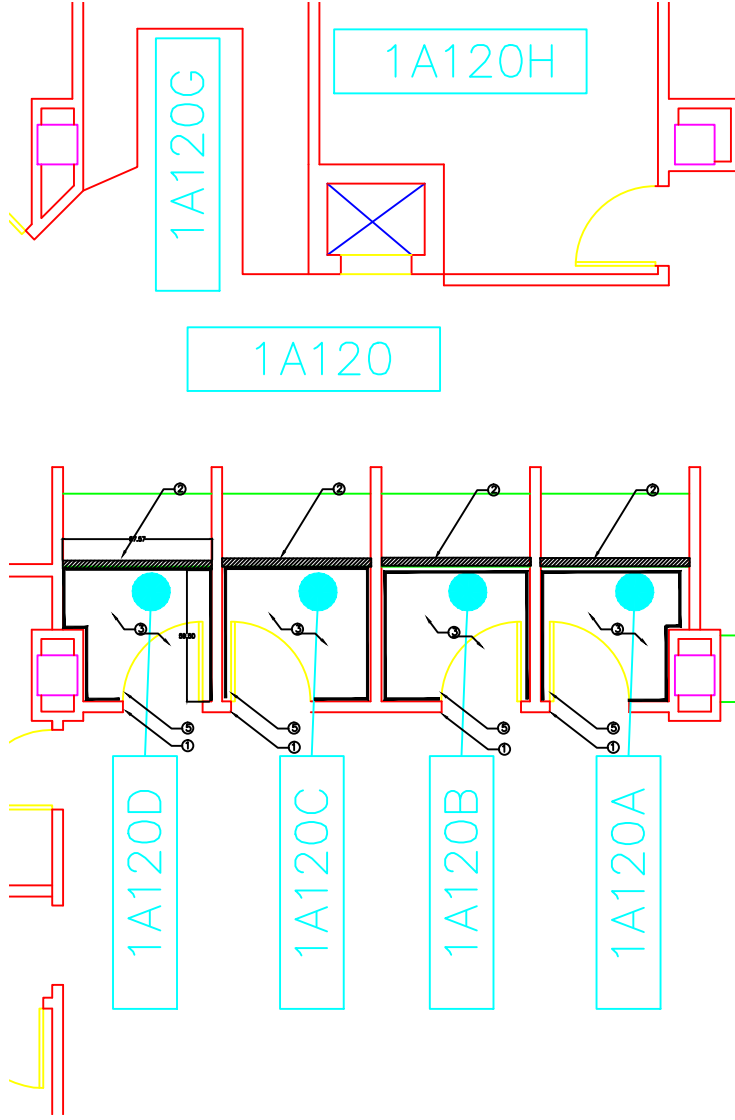
GENERAL NOTES:

1. SCALED DIMENSIONS & ARCHITECTURAL FEATURES MAY NOT BE CORRECT.
2. CONTRACTORS & A/E's ARE RESPONSIBLE TO FIELD VERIFY ALL DIMENSIONS WITHIN THE PROJECT AREA.

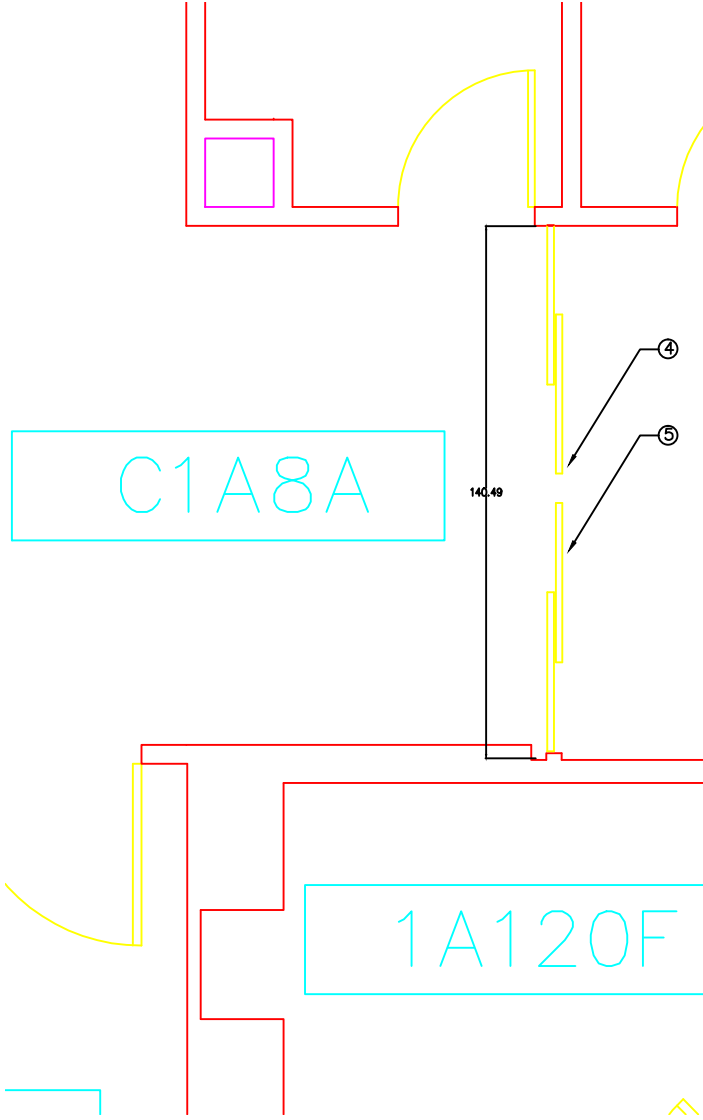
DEPARTMENT OF VETERANS AFFAIRS
MEDICAL CENTER
1055 Clermont Street
Denver, Colorado, 80220

Drawing Title EMERGENCY DEPART. FLOOR PLANS		Project Title FY12 FACILITY IMPROVEMENTS		Date 4.30.12
Approved: Service Chief	Drawn AYJ	Building Number 1	Title Block By ska	Project No. 554-12-803
Approved: Section Chief	Checked N/A	Wing A	DRAWING No A106	Dwg 8 Of 13

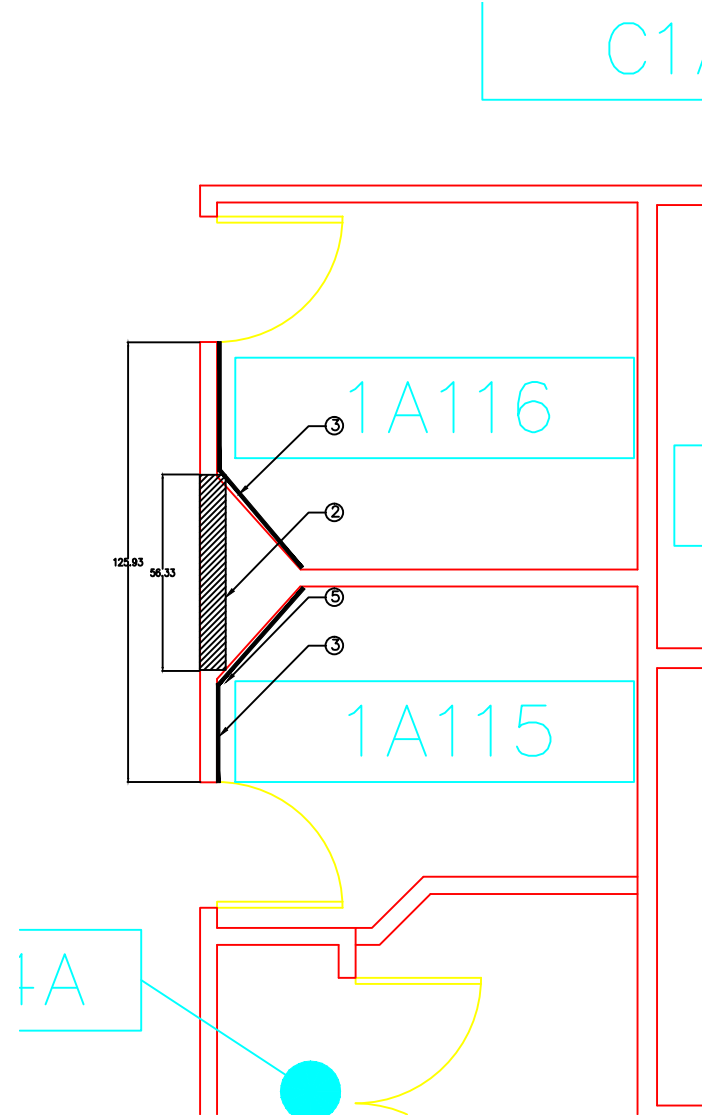
Department of
Veterans Affairs



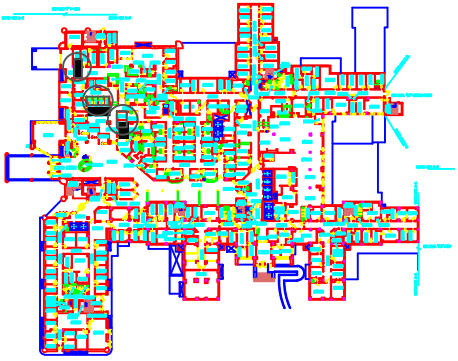
1A120 A-D
FLOOR PLAN
1
A106
SCALE: N/A



C1A8A CORRIDOR
FLOOR PLAN
2
A106
SCALE: N/A



1A115 AND 1A116
FLOOR PLAN
3
A106
SCALE: N/A



PLAN KEY NOTES

1. INSTALL (N) ADA HEIGHT COUNTER AND WORK SPACE. REMOVE (E) DOOR, FRAME, WALL, ETC. MATCH (E) FINISHES.
2. INSTALL (N) DOOR, FRAME AND HARDWARE. CONCRETE WALL DEMOLITION TO BE PERFORMED AT NIGHT.
3. MODIFY CEILING, INSTALL (N) GRID AND TILES. REPAIR AND INSTALL NEW FLOORING AS NEEDED. MODIFY SPRINKLER SYSTEM TO ENSURE SUFFICIENT COVERAGE. PATCH AND PAINT ALL AREAS IMPACTED BY CONSTRUCTION.
4. INSTALL (N) ROLL DOWN LOCKABLE METAL GATE. MODIFY FINISH CEILING, PIPING, ETC AS NEEDED.
5. INSTALL (N) DATA/VOICE PORT, ELECTRICAL AND DURESS BUTTON. COORDINATE WITH VA.
6. CONTRACTOR TO RELOCATE STAFF AND EQUIPMENT AS NEEDED TO TEMPORARY WORK LOCATION. RELOCATE STAFF TO 8C137 UPON COMPLETION.
7. BUILD (N) GYP WALL PARTITION. PATCH, PAINT.
8. INFECTON CONTROL: LOW RISK. TYPE B ACTIVITY. LEVEL II CONTROL PROCEDURES.

- | |
|---|
| INFECTION CONTROL RISK ASSESSMENT: |
| <ul style="list-style-type: none"> - LOW TO HIGH RISK LEVEL - TYPE B ACTIVITY - LEVEL II/III/IV CONTROL PROCEDURES |

- * OBTAIN INFECTION CONTROL PERMIT BEFORE CONSTRUCTION BEGINS. ISOLATE HVAC SYSTEM IN AREA WHERE WORK IS BEING DONE TO PREVENT CONTAMINATION OF THE DUCT SYSTEM. COMPLETE ALL CRITICAL BARRIERS OR IMPLEMENT CONTROL CLIMATE BETWEEN WORK AREA AND CONTAMINATED AREA. MAINTAIN NEGATIVE AIR PRESSURE WITHIN WORK SITE UTILIZING HEPA EQUIPPED AIR FILTRATION UNITS. SEAL HOLES, PIPES, CONDUITS, AND PUNCTURES APPROPRIATELY. DO NOT REMOVE DUCTWORK FROM WORK AREA UNTIL COMPLETION OF PROJECT IS WARRANTED BY THE OWNER'S SAFETY DEPARTMENT AND THOROUGHLY CLEANED BY THE OWNER'S ENVIRONMENTAL SERVICES DEPARTMENT. REMOVE BARRIER MATERIAL CAREFULLY TO MINIMIZE SPILLAGE OF DUST AND DEBRIS ASSOCIATED WITH CONSTRUCTION. CONTAIN CONSTRUCTION WASTE BEFORE TRANSPORT IN TIGHTLY COVERED CONTAINERS. COVER TRANSPORT RECEPTACLES OR CARTS. TAPE COVERING UNLESS SLOD LID. VACUUM WORK AREA AND VACUUM TRUCKS AND VACUUMS. WET MOP AREA WITH DISINFECTANT. REMOVE ISOLATION OF HVAC SYSTEM IN AREAS WHERE WORK IS BEING PERFORMED.

CONTRACTOR TO COMPLETE WORK DURING BUSINESS HOURS WHENEVER POSSIBLE. THE WORK IS NOT TO INTERFERE WITH PATIENT CARE. IF CERTAIN AREAS OF WORK NEED TO BE COMPLETED AFTER HOURS, IT WILL NEED TO BE COORDINATED WITH THE OWNER AND PHASED ACCORDINGLY. ENSURE EGRESS/ENTRANCE IS AVAILABLE AT ALL TIMES. COORDINATE ALL UTILITY SHUTDOWNS WITH COTR 3 OR MORE DAYS PRIOR TO SHUTDOWN. PHASING SCHEDULE TO BE DETERMINED WITH END-USERS DURING THE DESIGN PHASE. AFTER HOURS WORK INCLUDES THE FOLLOWING AREAS: EMERGENCY DEPARTMENT

IF APPLICABLE:

HOT WORK PERMITS.

PERMITS MUST BE OBTAINED 24 HOURS PRIOR TO COMMENTING OF WORK, WHENEVER POSSIBLE. ORIGINAL PERMIT TO BE POSTED WHERE WORK IS BEING PERFORMED; CONTRACTOR MUST RETURN PERMIT TO SAFETY OFFICE WHEN WORK IS COMPLETED.

FIRE WATCH. CONTRACTOR MUST INITIAL, DATE AND TIME EVERY 30 MINUTES AFTER HOT WORK HAS BEEN COMPLETED.

SPRINKLER WORK. CONTRACTOR TO OBTAIN HOT WORK PERMIT PRIOR TO ANY WORK CONSISTING OF CUTTING, WELDING, SOLDERING, BRAZING, ETC. IF HOT WORK OR WHEN SPRINKLER SYSTEM IS COMPROMISED FOR MORE THAN FOUR (4) HOURS.

CONTRACTOR TO PROVIDE WARNING SIGNAGE AND DIRECTIONAL SIGNAGE THAT SHALL BE POSTED IN CONSTRUCTION AREA WHILE WORK IS PERFORMED.

CONFINED SPACE. CONTRACTOR TO OBTAIN CONFINED SPACE PERMIT PRIOR TO ENTRY INTO MECHANICAL CHASE. ENSURE IT IS APPROVED BY VA SAFETY DEPARTMENT AND COTR.



PLOTTING NOTES:

1. FULL SIZE V.A. "E" SHEET (AS INDICATED)
2. HALF SIZE V.A. "D" SHEET (1/2 THE INDICATED SCALE)
3. LETTER SIZE: (NOT SCALE)

1. SCALED DIMENSIONS & ARCHITECTURAL FEATURES MAY NOT BE CORRECT.
2. CONTRACTORS & A/E's ARE RESPONSIBLE TO FIELD VERIFY ALL DIMENSIONS WITHIN THE PROJECT AREA.

Drawing Title		Project Title		Date	Department of Veterans Affairs
FIRM C 8C137 FLOOR PLANS		FY12 FACILITY IMPROVEMENTS		4.30.12	
				Project No. 554-12-803	
				DRAWING No	
Approved: Service Chief	Drawn AJJ	Building Number 1	Title Block ska	A107	
Approved: Section Chief	Checked N/A	Wing C		Dwg 9 of 13	

Department of
Veterans Affairs

PLAN KEY NOTES

1. INSTALL (N) AUTOMATIC DOOR OPENER SYSTEM. MODIFY (E) DOOR HARDWARE AS NEED TO ACCOMMODATE (N) ADO FUNCTION. (N) HARDWARE TO INCLUDE TO ELECTRIC DOOR STRIKE, ETC.

2. COORDINATE ALL ELECTRICAL REQUIREMENTS WITH VA FMS ELECTRICIANS.

3. SOME DEMOLITION OF (E) WALL MAY BE REQUIRED TO INSTALL (N) SYSTEM AND ROUTE (N) ELECTRICAL WORK. PAINT, PATCH AND REPAIR WALL(S) AS NEEDED.

4. INFECTION CONTROL: LOW RISK, TYPE B ACTIVITY. LEVEL II CONTROL PROCEDURES.

INFECTION CONTROL RISK ASSESSMENT:

- LOW TO HIGH RISK LEVEL

- TYPE B ACTIVITY

- LEVEL II/III/IV CONTROL PROCEDURES

INFECTION CONTROL RISK ASSESSMENT NOTES:

* OBTAIN INFECTION CONTROL PERMIT BEFORE CONSTRUCTION BEGINS. ISOLATE HVAC SYSTEM IN AREA WHERE WORK IS BEING DONE TO PREVENT CONTAMINATION OF THE DUCT SYSTEM. COMPLETE ALL CRITICAL BARRIERS OR IMPLEMENT CONTROL CUBE METHOD BEFORE CONSTRUCTION BEGINS. MAINTAIN NEGATIVE AIR PRESSURE WITHIN WORK SITE UTILIZING HEPA EQUIPPED AIR FILTRATION UNITS. SEAL HOLES, PIPES, CONDUITS, AND PUNCTURES APPROPRIATELY. DO NOT REMOVE BARRIERS FROM WORK AREA UNTIL COMPLETED PROJECT IS INSPECTED BY THE OWNER'S SAFETY DEPARTMENT AND THOROUGHLY CLEANED BY THE OWNER'S ENVIRONMENTAL SERVICES DEPARTMENT. REMOVE BARRIER MATERIAL CAREFULLY TO MINIMIZE SPREADING OF DIRT AND DEBRIS ASSOCIATED WITH CONSTRUCTION. CONTAIN CONSTRUCTION WASTE BEFORE TRANSPORT IN TIGHTLY COVERED CONTAINERS. COVER TRANSPORT RECEPTACLES OR CARTS. TAPE COVERING UNLESS SOLID LID. VACUUM WORK AREA WITH HEPA FILTERED VACUUMS. WET MOP AREA WITH DISINFECTANT. REMOVE ISOLATION OF HVAC SYSTEM IN AREAS WHERE WORK IS BEING PERFORMED.

PHASING:

CONTRACTOR TO COMPLETE WORK DURING BUSINESS HOURS WHENEVER POSSIBLE. THE WORK IS NOT TO INTERFERE WITH PATIENT CARE. IF CERTAIN AREAS OF WORK NEED TO BE COMPLETED AFTER HOURS, IT WILL NEED TO BE COORDINATED WITH THE OWNER AND PHASED ACCORDINGLY. ENSURE EGRESS/ENTRANCE IS AVAILABLE AT ALL TIMES. COORDINATE ALL UTILITY SHUTDOWNS WITH COTR 3 OR MORE DAYS PRIOR TO SHUTDOWN.

PHASING SCHEDULE TO BE DETERMINED WITH END-USERS DURING THE DESIGN PHASE. AFTER HOURS WORK INCLUDES THE FOLLOWING AREAS: EMERGENCY DEPARTMENT

INTERIM LIFE SAFETY MEASURES NOTES (ILSM):

IF APPLICABLE:

HOT WORK PERMITS. PERMITS MUST BE OBTAINED 24 HOURS PRIOR TO COMMENCEMENT OF WORK. WHENEVER POSSIBLE, ORIGINAL PERMIT TO BE POSTED WHERE WORK IS BEING PERFORMED; CONTRACTOR MUST RETURN PERMIT TO SAFETY OFFICE WHEN WORK IS COMPLETED.

FIRE WATCH. CONTRACTOR MUST INITIAL, DATE AND TIME EVERY 30 MINUTES AFTER HOT WORK HAS STARTED.

SPRINKLER WORK. CONTRACTOR TO OBTAIN HOT WORK PERMIT PRIOR TO ANY WORK CONSISTING OF CUTTING, WELDING, SOLDERING, BRAZING, ETC IS PERFORMED OR WHEN SPRINKLER SYSTEM IS COMPROMISED FOR MORE THAN FOUR (4) HOURS.

CONTRACTOR TO PROVIDE WARNING SIGNAGE AND DIRECTIONAL SIGNAGE THAT SHALL BE POSTED IN CONSTRUCTION AREA WHILE WORK IS PERFORMED.

CONFINED SPACE. CONTRACTOR TO OBTAIN CONFINED SPACE PERMIT PRIOR TO ENTRY INTO MECHANICAL CHASE. ENSURE IT IS APPROVED BY VA SAFETY DEPARTMENT AND COTR.

REV	50% DESIGN REVIEW PACKAGE	4.27.12
By	Revisions	Date

PLOTTING NOTES:

1. FULL SIZE V.A. "E" SHEET (AS INDICATED)

2. HALF SIZE V.A. "D" SHEET (1/2 THE INDICATED SCALE)

3. LETTER SIZE: (NOT SCALE)

GENERAL NOTES:

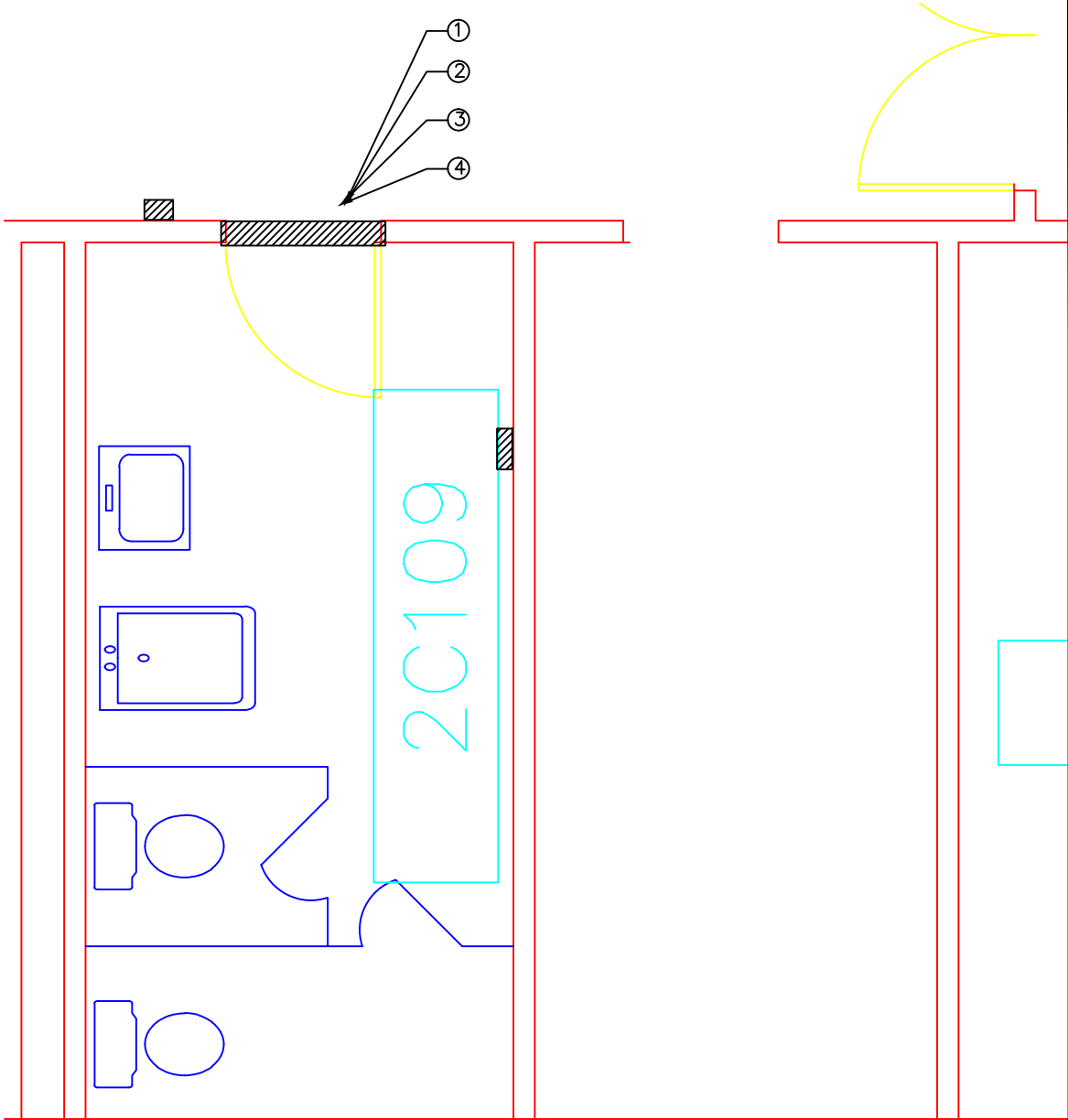
1. SCALED DIMENSIONS & ARCHITECTURAL FEATURES MAY NOT BE CORRECT.

2. CONTRACTORS & A/E's ARE RESPONSIBLE TO FIELD VERIFY ALL DIMENSIONS WITHIN THE PROJECT AREA.

DEPARTMENT OF VETERANS AFFAIRS
MEDICAL CENTER
1055 Clermont Street
Denver, Colorado, 80220

Drawing Title 2C109 FLOOR PLAN		Project Title FY12 FACILITY IMPROVEMENTS		Date 4.30.12
Approved: Service Chief		Drawn AYJ	Building Number 1	Project No. 554-12-803
Approved: Section Chief		Checked N/A	Wing C	Title Block By ska
				DRAWING No. A108
				Dwg 9 Of 13

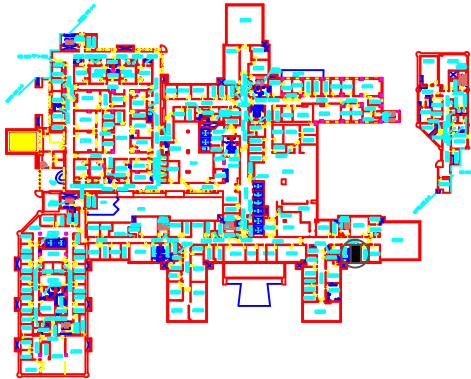
Department of
Veterans Affairs



**BATHROOM
FLOOR PLAN**

1
A108

SCALE: N/A



1. REMOVE THE (E) DOOR AND FRAME AND INSTALL (N) GYPSUM BOARD WALL SYSTEM. SALVAGE DOOR AND HARDWARE. RELOCATE STAFF AND/OR EQUIPMENT TO DURING CONSTRUCTION.

2. REMOVE (E) PLEXI GLASS. PATCH, PAINT AND REPAIR AREA AS NEEDED.

3. PURCHASE AND INSTALL (N) ROLL-DOWN, LOCKABLE METAL WINDOW UNIT. MODIFY CEILING, SPRINKLER PIPING, ETC AND WALLS TO ACCOMMODATE (N) GATE.

4. INFECTION CONTROL: LOW RISK, TYPE B, LEVEL II PROCEDURES.

INFECTION CONTROL RISK ASSESSMENT:

- LOW TO HIGH RISK LEVEL
- TYPE B ACTIVITY
- LEVEL II/III/IV CONTROL PROCEDURES

INFECTION CONTROL RISK ASSESSMENT NOTES:

* OBTAIN INFECTION CONTROL PERMIT BEFORE CONSTRUCTION BEGINS. ISOLATE HVAC SYSTEM IN AREA WHERE WORK IS BEING DONE TO PREVENT CONTAMINATION OF THE DUCT SYSTEM. COMPLETE ALL CRITICAL BARRIERS OR IMPLEMENT CONTROL CUBE METHOD BEFORE CONSTRUCTION BEGINS. MAINTAIN NEGATIVE AIR PRESSURE WITHIN WORK SITE UTILIZING HEPA EQUIPPED AIR FILTRATION UNITS. SEAL HOLES, PIPES, CONDUITS, AND PUNCTURES APPROPRIATELY. DO NOT REMOVE BARRIERS FROM WORK AREA UNTIL COMPLETED PROJECT IS INSPECTED BY THE OWNER'S SAFETY DEPARTMENT AND THOROUGHLY CLEANED BY THE OWNER'S ENVIRONMENTAL SERVICES DEPARTMENT. REMOVE BARRIER MATERIAL CAREFULLY TO MINIMIZE SPREADING OF DIRT AND DEBRIS ASSOCIATED WITH CONSTRUCTION. CONTAIN CONSTRUCTION WASTE BEFORE TRANSPORT IN TIGHTLY COVERED CONTAINERS. COVER TRANSPORT RECEPTACLES OR CARTS. TAPE COVERING UNLESS SOLID LID. VACUUM WORK AREA WITH HEPA FILTERED VACUUMS. WET MOP AREA WITH DISINFECTANT. REMOVE ISOLATION OF HVAC SYSTEM IN AREAS WHERE WORK IS BEING PERFORMED.

PHASING:

CONTRACTOR TO COMPLETE WORK DURING BUSINESS HOURS WHENEVER POSSIBLE. THE WORK IS NOT TO INTERFERE WITH PATIENT CARE. IF CERTAIN AREAS OF WORK NEED TO BE COMPLETED AFTER HOURS, IT WILL NEED TO BE COORDINATED WITH THE OWNER AND PHASED ACCORDINGLY. ENSURE EGRESS/ENTRANCE IS AVAILABLE AT ALL TIMES. COORDINATE ALL UTILITY SHUTDOWNS WITH COTR 3 OR MORE DAYS PRIOR TO SHUTDOWN. PHASING SCHEDULE TO BE DETERMINED WITH END-USERS DURING THE DESIGN PHASE. AFTER HOURS WORK INCLUDES THE FOLLOWING AREAS: EMERGENCY DEPARTMENT

INTERIM LIFE SAFETY MEASURES NOTES (ILSM):

IF APPLICABLE:

HOT WORK PERMITS. PERMITS MUST BE OBTAINED 24 HOURS PRIOR TO COMMENCEMENT OF WORK, WHENEVER POSSIBLE. ORIGINAL PERMIT TO BE POSTED WHERE WORK IS BEING PERFORMED; CONTRACTOR MUST RETURN PERMIT TO SAFETY OFFICE WHEN WORK IS COMPLETED.

FIRE WATCH. CONTRACTOR MUST INITIAL, DATE AND TIME EVERY 30 MINUTES AFTER HOT WORK HAS STARTED.

SPRINKLER WORK. CONTRACTOR TO OBTAIN HOT WORK PERMIT PRIOR TO ANY WORK CONSISTING OF CUTTING, WELDING, SOLDERING, BRAZING, ETC IS PERFORMED OR WHEN SPRINKLER SYSTEM IS COMPROMISED FOR MORE THAN FOUR (4) HOURS.

CONTRACTOR TO PROVIDE WARNING SIGNAGE AND DIRECTIONAL SIGNAGE THAT SHALL BE POSTED IN CONSTRUCTION AREA WHILE WORK IS PERFORMED.

CONFINED SPACE. CONTRACTOR TO OBTAIN CONFINED SPACE PERMIT PRIOR TO ENTRY INTO MECHANICAL CHASE. ENSURE IT IS APPROVED BY VA SAFETY DEPARTMENT AND COTR.

ROOM 60,61,62
NEW FLOOR PLAN

ROOM 32
FLOOR PLAN

BLDG 24
FLOOR PLANS

FY12 FACILITY
IMPROVEMENTS

DEPARTMENT OF VETERANS AFFAIRS
MEDICAL CENTER
1055 Clermont Street
Denver, Colorado, 80220

Plotting Notes:

- FULL SIZE V.A. "E" SHEET (AS INDICATED)
- HALF SIZE V.A. "D" SHEET (1/2 THE INDICATED SCALE)
- LETTER SIZE: (NOT SCALE)

General Notes:

- SCALED DIMENSIONS & ARCHITECTURAL FEATURES MAY NOT BE CORRECT.
- CONTRACTORS & A/E's ARE RESPONSIBLE TO FIELD VERIFY ALL DIMENSIONS WITHIN THE PROJECT AREA.

Drawing Title

BLDG 24
FLOOR PLANS

Project Title

FY12 FACILITY
IMPROVEMENTS

Date

4.30.12

Project No.

554-12-803

Approved: Service Chief

Drawn

AYJ

Building Number

1

Approved: Section Chief

Checked

N/A

Wing

CLC

Title Block By

ska

DRAWING No

A109

Dwg 11 Of 13

Department of Veterans Affairs

Department of
Veterans Affairs

PLAN KEY NOTES

1. CONSTRUCT A (N) GYP WALL. HEIGHT OF WALL SHALL BE BUILT NOT TO INTERFERE WITH (E) HVAC AND LIGHTING. DO NOT INSTALL DOOR.

2. PATCH AND PAINT WALL. INSTALL NEW WALL BASE. MATCH EXISTING FINISHES.

3. MODIFY SPRINKLER PIPING AND/OR INSTALL NEW FIXTURES TO PROVIDE SUFFICIENT COVERAGE.

4. INSTALL (N) DATA/VOICE PORT AND ELECTRICAL.

5. TEMPORARILY RELOCATE STAFF, EQUIPMENT, ETC DURING CONSTRUCTION.

6. INFECTION CONTROL: LOW RISK, TYPE B, LEVEL II PROCEDURES.

INFECTION CONTROL RISK ASSESSMENT:

– LOW TO HIGH RISK LEVEL

– TYPE B ACTIVITY

– LEVEL II/III/IV CONTROL PROCEDURES

INFECTION CONTROL RISK ASSESSMENT NOTES:

* OBTAIN INFECTION CONTROL PERMIT BEFORE CONSTRUCTION BEGINS. ISOLATE HVAC SYSTEM IN AREA WHERE WORK IS BEING DONE TO PREVENT CONTAMINATION OF THE DUCT SYSTEM. COMPLETE ALL CRITICAL BARRIERS OR IMPLEMENT CONTROL CUBE METHOD BEFORE CONSTRUCTION BEGINS. MAINTAIN NEGATIVE AIR PRESSURE WITHIN WORK SITE UTILIZING HEPA EQUIPPED AIR FILTRATION UNITS. SEAL HOLES, PIPES, CONDUITS, AND PUNCTURES APPROPRIATELY. DO NOT REMOVE BARRIERS FROM WORK AREA UNTIL COMPLETED PROJECT IS INSPECTED BY THE OWNER'S SAFETY DEPARTMENT AND THOROUGHLY CLEANED BY THE OWNER'S ENVIRONMENTAL SERVICES DEPARTMENT. REMOVE BARRIER MATERIAL CAREFULLY TO MINIMIZE SPREADING OF DIRT AND DEBRIS ASSOCIATED WITH CONSTRUCTION. CONTAIN CONSTRUCTION WASTE BEFORE TRANSPORT IN TIGHTLY COVERED CONTAINERS. COVER TRANSPORT RECEPTACLES OR CARTS. TAPE COVERING UNLESS SOLID LID. VACUUM WORK AREA WITH HEPA FILTERED VACUUMS. WET MOP AREA WITH DISINFECTANT. REMOVE ISOLATION OF HVAC SYSTEM IN AREAS WHERE WORK IS BEING PERFORMED.

PHASING:

CONTRACTOR TO COMPLETE WORK DURING BUSINESS HOURS WHENEVER POSSIBLE. THE WORK IS NOT TO INTERFERE WITH PATIENT CARE. IF CERTAIN AREAS OF WORK NEED TO BE COMPLETED AFTER HOURS, IT WILL NEED TO BE COORDINATED WITH THE OWNER AND PHASED ACCORDINGLY. ENSURE EGRESS/ENTRANCE IS AVAILABLE AT ALL TIMES. COORDINATE ALL UTILITY SHUTDOWNS WITH COTR 3 OR MORE DAYS PRIOR TO SHUTDOWN. PHASING SCHEDULE TO BE DETERMINED WITH END-USERS DURING THE DESIGN PHASE. AFTER HOURS WORK INCLUDES THE FOLLOWING AREAS: EMERGENCY DEPARTMENT

INTERIM LIFE SAFETY MEASURES NOTES (ILSM):

IF APPLICABLE:

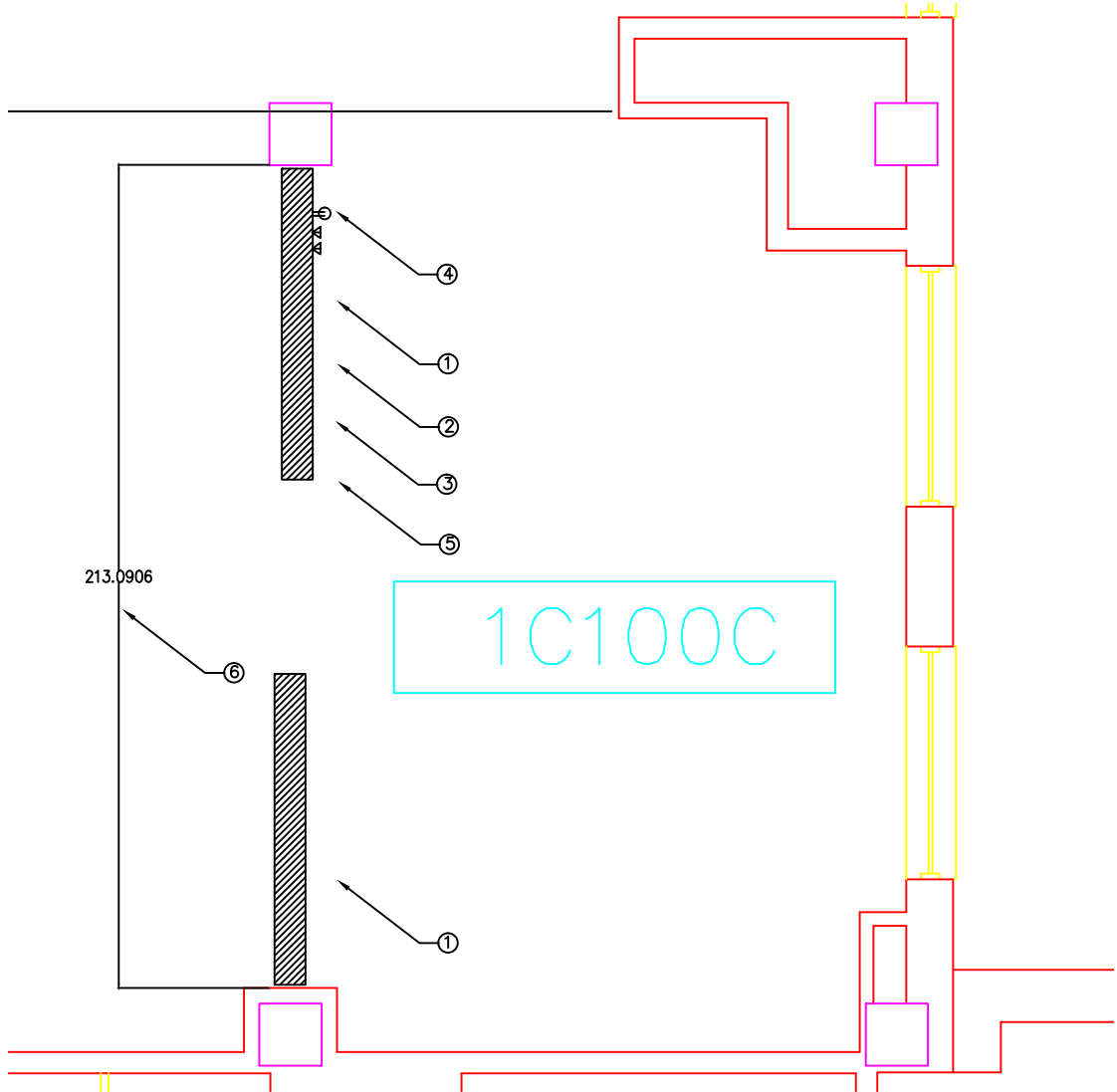
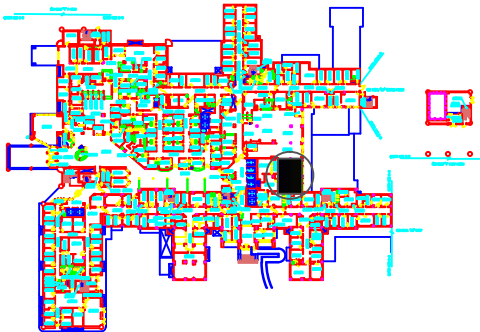
HOT WORK PERMITS. PERMITS MUST BE OBTAINED 24 HOURS PRIOR TO COMMENCEMENT OF WORK, WHENEVER POSSIBLE. ORIGINAL PERMIT TO BE POSTED WHERE WORK IS BEING PERFORMED; CONTRACTOR MUST RETURN PERMIT TO SAFETY OFFICE WHEN WORK IS COMPLETED.

FIRE WATCH. CONTRACTOR MUST INITIAL, DATE AND TIME EVERY 30 MINUTES AFTER HOT WORK HAS STARTED.

SPRINKLER WORK. CONTRACTOR TO OBTAIN HOT WORK PERMIT PRIOR TO ANY WORK CONSISTING OF CUTTING, WELDING, SOLDERING, BRAZING, ETC IS PERFORMED OR WHEN SPRINKLER SYSTEM IS COMPROMISED FOR MORE THAN FOUR (4) HOURS.

CONTRACTOR TO PROVIDE WARNING SIGNAGE AND DIRECTIONAL SIGNAGE THAT SHALL BE POSTED IN CONSTRUCTION AREA WHILE WORK IS PERFORMED.

CONFINED SPACE. CONTRACTOR TO OBTAIN CONFINED SPACE PERMIT PRIOR TO ENTRY INTO MECHANICAL CHASE. ENSURE IT IS APPROVED BY VA SAFETY DEPARTMENT AND COTR.



1C100C FLOOR PLAN

1 A110 SCALE: N/A

REV	50% DESIGN REVIEW PACKAGE	4.27.12
By	Revisions	Date

PLOTTING NOTES:

1. FULL SIZE V.A. "E" SHEET (AS INDICATED)

2. HALF SIZE V.A. "D" SHEET (1/2 THE INDICATED SCALE)

3. LETTER SIZE: (NOT SCALE)

GENERAL NOTES:

1. SCALED DIMENSIONS & ARCHITECTURAL FEATURES MAY NOT BE CORRECT.

2. CONTRACTORS & A/E's ARE RESPONSIBLE TO FIELD VERIFY ALL DIMENSIONS WITHIN THE PROJECT AREA.

DEPARTMENT OF VETERANS AFFAIRS
MEDICAL CENTER
1055 Clermont Street
Denver, Colorado, 80220

Drawing Title 1C100C FLOOR PLANS		Project Title FY12 FACILITY IMPROVEMENTS		Date 4.30.12
Approved: Service Chief		Building Number 1		Project No. 554-12-803
Drawn AYJ		Title Block By ska		DRAWING No. A110
Approved: Section Chief		Wing C		Dwg 12 Of 13
Checked N/A		Department of Veterans Affairs		

PLAN KEY NOTES

1. DEMO (E) FINISH FLOORING AND BASE TILE. DEMO APPROXIMATELY 1" OF CONCRETE FLOORING TO PREVENT WATER FLOWING TOWARDS ENTRY DOOR.

2. POUR (N) CONCRETE FLOOR. SLOPE FLOOR TO DRAIN. PROVIDE WATERPROOF LINER. REPLACE DRAIN.

3. INSTALL (N) FINISH TILE. MATCH EXISTING.

4. INFECTION CONTROL: LOW RISK, TYPE B ACTIVITY, LEVEL II PROCEDURES.

INFECTION CONTROL RISK ASSESSMENT:

– LOW TO HIGH RISK LEVEL

– TYPE B ACTIVITY

– LEVEL II/III/IV CONTROL PROCEDURES

INFECTION CONTROL RISK ASSESSMENT NOTES:

* OBTAIN INFECTION CONTROL PERMIT BEFORE CONSTRUCTION BEGINS. ISOLATE HVAC SYSTEM IN AREA WHERE WORK IS BEING DONE TO PREVENT CONTAMINATION OF THE DUCT SYSTEM. COMPLETE ALL CRITICAL BARRIERS OR IMPLEMENT CONTROL CUBE METHOD BEFORE CONSTRUCTION BEGINS. MAINTAIN NEGATIVE AIR PRESSURE WITHIN WORK SITE UTILIZING HEPA EQUIPPED AIR FILTRATION UNITS. SEAL HOLES, PIPES, CONDUITS, AND PUNCTURES APPROPRIATELY. DO NOT REMOVE BARRIERS FROM WORK AREA UNTIL COMPLETED PROJECT IS INSPECTED BY THE OWNER'S SAFETY DEPARTMENT AND THOROUGHLY CLEANED BY THE OWNER'S ENVIRONMENTAL SERVICES DEPARTMENT. REMOVE BARRIER MATERIAL CAREFULLY TO MINIMIZE SPREADING OF DIRT AND DEBRIS ASSOCIATED WITH CONSTRUCTION. CONTAIN CONSTRUCTION WASTE BEFORE TRANSPORT IN TIGHTLY COVERED CONTAINERS. COVER TRANSPORT RECEPTACLES OR CARTS. TAPE COVERING UNLESS SOLID LID. VACUUM WORK AREA WITH HEPA FILTERED VACUUMS. WET MOP AREA WITH DISINFECTANT. REMOVE ISOLATION OF HVAC SYSTEM IN AREAS WHERE WORK IS BEING PERFORMED.

PHASING:

CONTRACTOR TO COMPLETE WORK DURING BUSINESS HOURS WHENEVER POSSIBLE. THE WORK IS NOT TO INTERFERE WITH PATIENT CARE. IF CERTAIN AREAS OF WORK NEED TO BE COMPLETED AFTER HOURS, IT WILL NEED TO BE COORDINATED WITH THE OWNER AND PHASED ACCORDINGLY. ENSURE EGRESS/ENTRANCE IS AVAILABLE AT ALL TIMES. COORDINATE ALL UTILITY SHUTDOWNS WITH COTR 3 OR MORE DAYS PRIOR TO SHUTDOWN. PHASING SCHEDULE TO BE DETERMINED WITH END-USERS DURING THE DESIGN PHASE. AFTER HOURS WORK INCLUDES THE FOLLOWING AREAS: EMERGENCY DEPARTMENT

INTERIM LIFE SAFETY MEASURES NOTES (ILSM):

IF APPLICABLE:

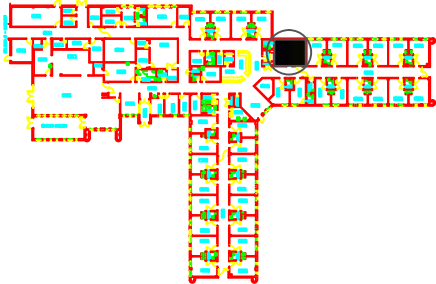
HOT WORK PERMITS. PERMITS MUST BE OBTAINED 24 HOURS PRIOR TO COMMENCEMENT OF WORK, WHENEVER POSSIBLE. ORIGINAL PERMIT TO BE POSTED WHERE WORK IS BEING PERFORMED; CONTRACTOR MUST RETURN PERMIT TO SAFETY OFFICE WHEN WORK IS COMPLETED.

FIRE WATCH. CONTRACTOR MUST INITIAL, DATE AND TIME EVERY 30 MINUTES AFTER HOT WORK HAS STARTED.

SPRINKLER WORK. CONTRACTOR TO OBTAIN HOT WORK PERMIT PRIOR TO ANY WORK CONSISTING OF CUTTING, WELDING, SOLDERING, BRAZING, ETC IS PERFORMED OR WHEN SPRINKLER SYSTEM IS COMPROMISED FOR MORE THAN FOUR (4) HOURS.

CONTRACTOR TO PROVIDE WARNING SIGNAGE AND DIRECTIONAL SIGNAGE THAT SHALL BE POSTED IN CONSTRUCTION AREA WHILE WORK IS PERFORMED.

CONFINED SPACE. CONTRACTOR TO OBTAIN CONFINED SPACE PERMIT PRIOR TO ENTRY INTO MECHANICAL CHASE. ENSURE IT IS APPROVED BY VA SAFETY DEPARTMENT AND COTR.

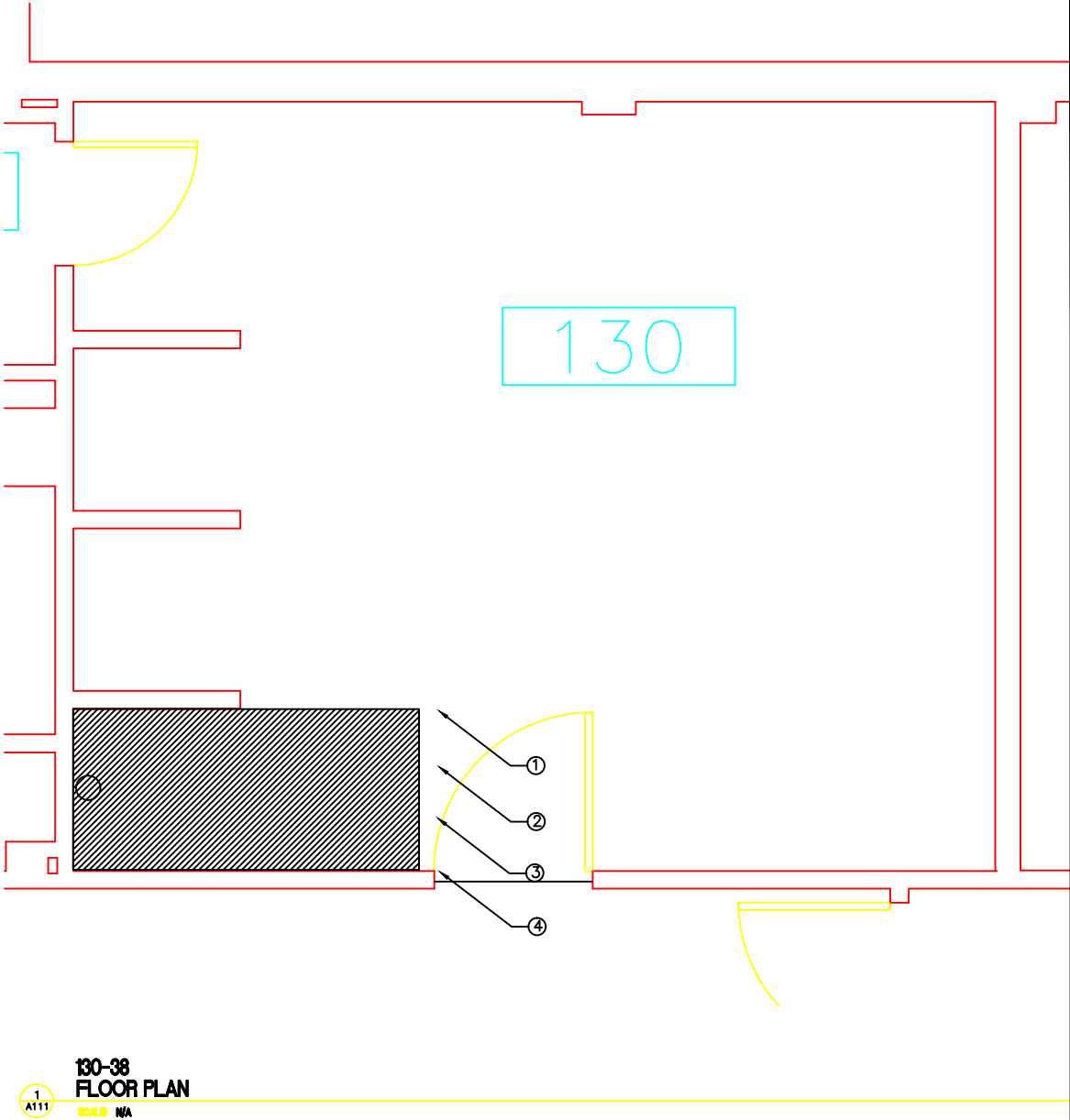


REV	50% DESIGN REVIEW PACKAGE	4.27.12
By	Revisions	Date

- PLOTTING NOTES:
- FULL SIZE V.A. "E" SHEET (AS INDICATED)
 - HALF SIZE V.A. "D" SHEET (1/2 THE INDICATED SCALE)
 - LETTER SIZE: (NOT SCALE)

- GENERAL NOTES:
- SCALED DIMENSIONS & ARCHITECTURAL FEATURES MAY NOT BE CORRECT.
 - CONTRACTORS & A/E's ARE RESPONSIBLE TO FIELD VERIFY ALL DIMENSIONS WITHIN THE PROJECT AREA.

DEPARTMENT OF VETERANS AFFAIRS
MEDICAL CENTER
1055 Clermont Street
Denver, Colorado, 80220



130-38
FLOOR PLAN

1
A111

SCALE N/A

Drawing Title		Project Title		Date	
130-38 FLOOR PLANS		FY12 FACILITY IMPROVEMENTS		4.30.12	
Approved: Service Chief		Building Number		Project No.	
Approved: Section Chief		1		554-12-803	
Drawn		Title Block		DRAWING No.	
AYJ		By		A111	
Checked		Wing		Dwg 13 Of 13	
N/A		ska		Department of Veterans Affairs	