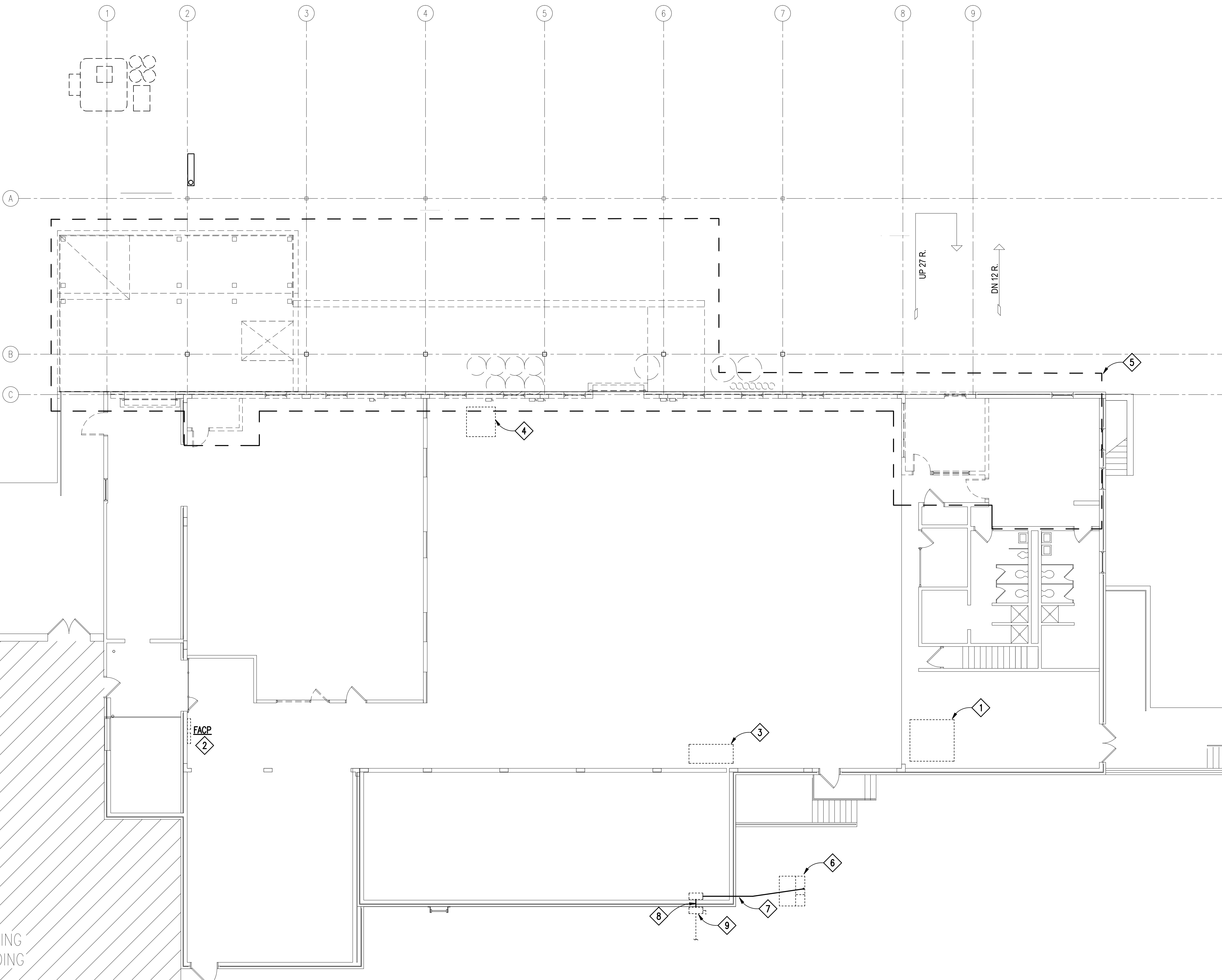


three inches = one foot
one and one half inches = one foot
one inch = one foot
three quarters inch = one foot
one half inch = one foot
three eighths inch = one foot
one quarter inch = one foot
one eighth inch = one foot



- DEMOLITION NOTES:**
(THIS SHEET ONLY)
- 1 EXISTING BLANKET FOLDING EQUIPMENT TO BE RELOCATED. EQUIPMENT IS CONNECTED TO EXISTING PANEL P-1 CIRCUITS 19,21,23. DISCONNECT EXISTING ELECTRICAL CONNECTION AND AND REMOVE COMPLETELY BACK TO PANEL. REFER TO NEW WORK PLANS FOR ADDITIONAL INFORMATION.
 - 2 EXISTING FIRE ALARM PANEL TO REMAIN.
 - 3 EXISTING BRAUN SMALL PIECE FOLDER TO BE RELOCATED. DISCONNECT EXISTING ELECTRICAL CONNECTION AND REMOVE COMPLETELY BACK TO SOURCE PANEL.
 - 4 EXISTING 85 LBS WASHER TO BE RELOCATED. DISCONNECT AND REMOVE EXISTING WALL MOUNTED DISCONNECT SWITCH AND CONDUIT COMPLETELY IN LAUNDRY AREA TO BELOW FLOOR IN CRAWLSPACE AND CAP FOR FUTURE EXTENSION TO NEW LOCATION. REFER TO NEW WORK PLANS FOR ADDITIONAL INFORMATION.
 - 5 EXISTING AREA TO BE DEMOLISHED. REMOVE ALL EXISTING ELECTRICAL, TELEPHONE/DATA, LIGHTING, ETC COMPLETELY BACK TO SOURCE PANEL/CONNECTION POINT ON ALL WALLS SHOWN AS EXISTING TO BE REMOVED.
 - 6 EXISTING PAD MOUNTED TRANSFORMER TO REMAIN.
 - 7 EXISTING CONDUIT AND CONDUCTORS TO BE REMOVED. REFER TO SHEET EP101 FOR ADDITIONAL INFORMATION.
 - 8 EXISTING CONDUIT AND CONDUCTORS FROM SPLICE BOX TO WALL MOUNTED SERVICE DISCONNECT SWITCH TO BE REMOVED. REFER TO SHEET EP101 FOR ADDITIONAL INFORMATION.
 - 9 EXISTING WALL MOUNTED SERVICE DISCONNECT SWITCH, CONDUIT AND CONDUCTORS FROM SWITCH TO MRI BUILDING ATS TO REMAIN.

DEMOLITION FIRST FLOOR PLAN
SCALE: 1/8" = 1'-0"

CORRECTED FINAL

Revisions:	CONSULTANTS:			ARCHITECT/ENGINEERS:		License #: AA26002161 COA#: M10000003094		Drawing Title DEMOLITION FIRST PLAN ELECTRICAL		Project Title EXPAND LAUNDRY FACILITY VA MEDICAL CENTER		Project Number 573A4-12-105		OFFICE OF CONSTRUCTION AND FACILITIES MANAGEMENT 		
				TOLAND MIZELL MOLNAR				Approved: Project Director		Location LAKE CITY, FL		Building Number 74				
				590 Means St. NW Ste. 200 Atlanta, GA 30318 404.214.9774		418 W. Main St. Marshallville, GA 31057 404.214.9774		14499 N. Dale Mabry Hwy. Ste. 179-A Tampa, FL 33618 813.384.8027		2412 Ferrand St. Ste. 5 Monroe, LA 71201 318.303.6774		435 Spence Dr. Salisbury, NC 28144 704.762.9652			Drawing Number ED102	
				440 MARTIN LUTHER KING, JR. BLVD MACON, GEORGIA 31201 478-743-8415 FAX 478-743-8239 WWW.CLARKNIXSEN.COM						Date 04-25-2013		Checked JM			Drawn SJB	