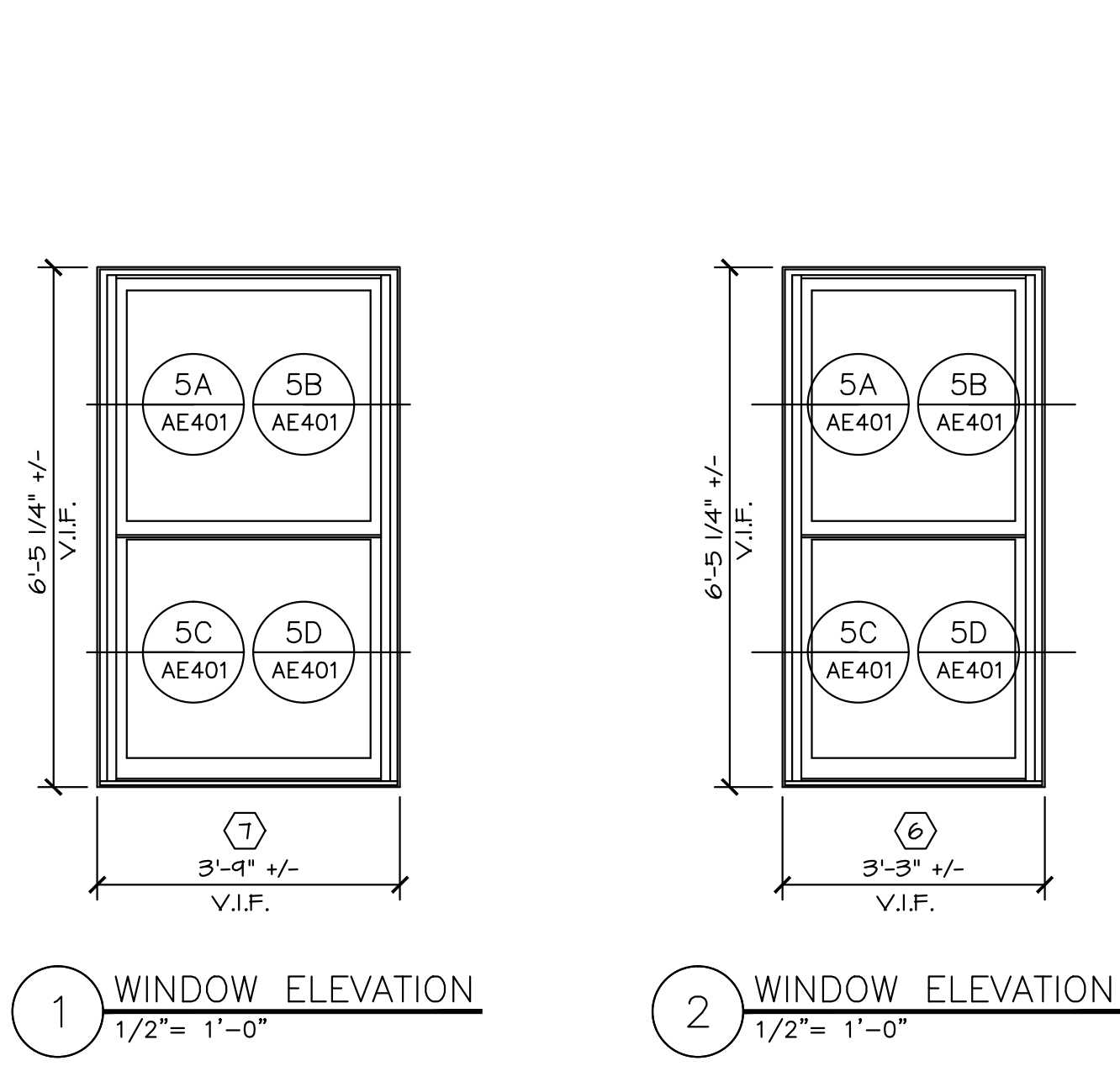
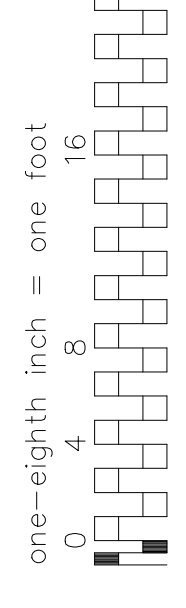
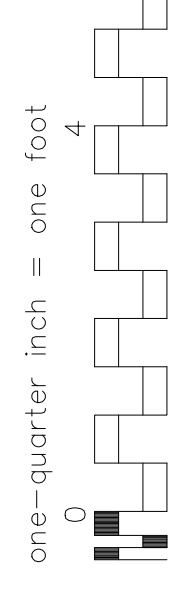
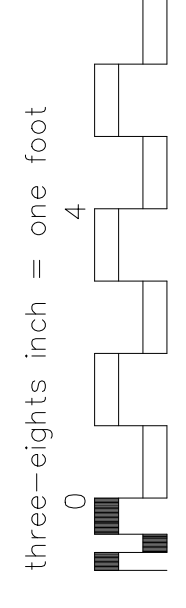
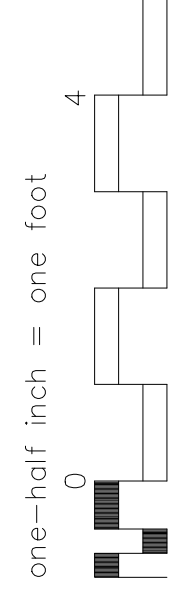
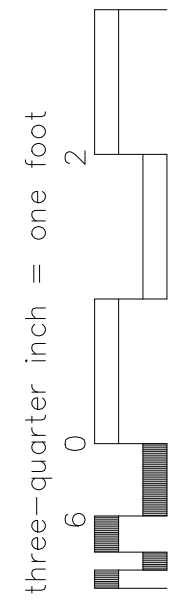
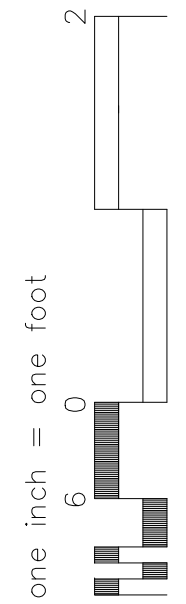
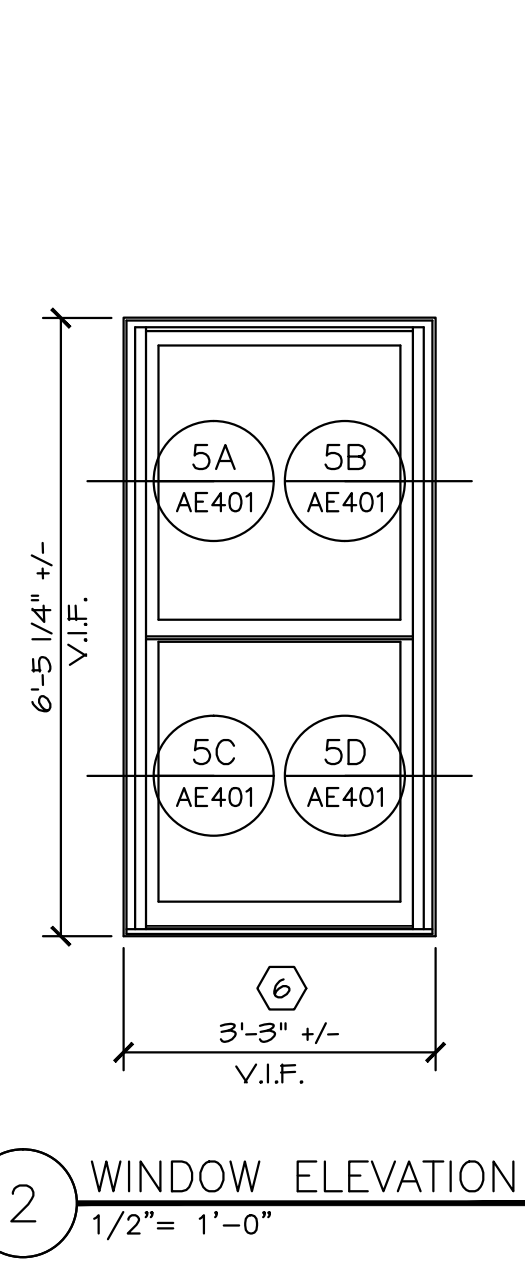


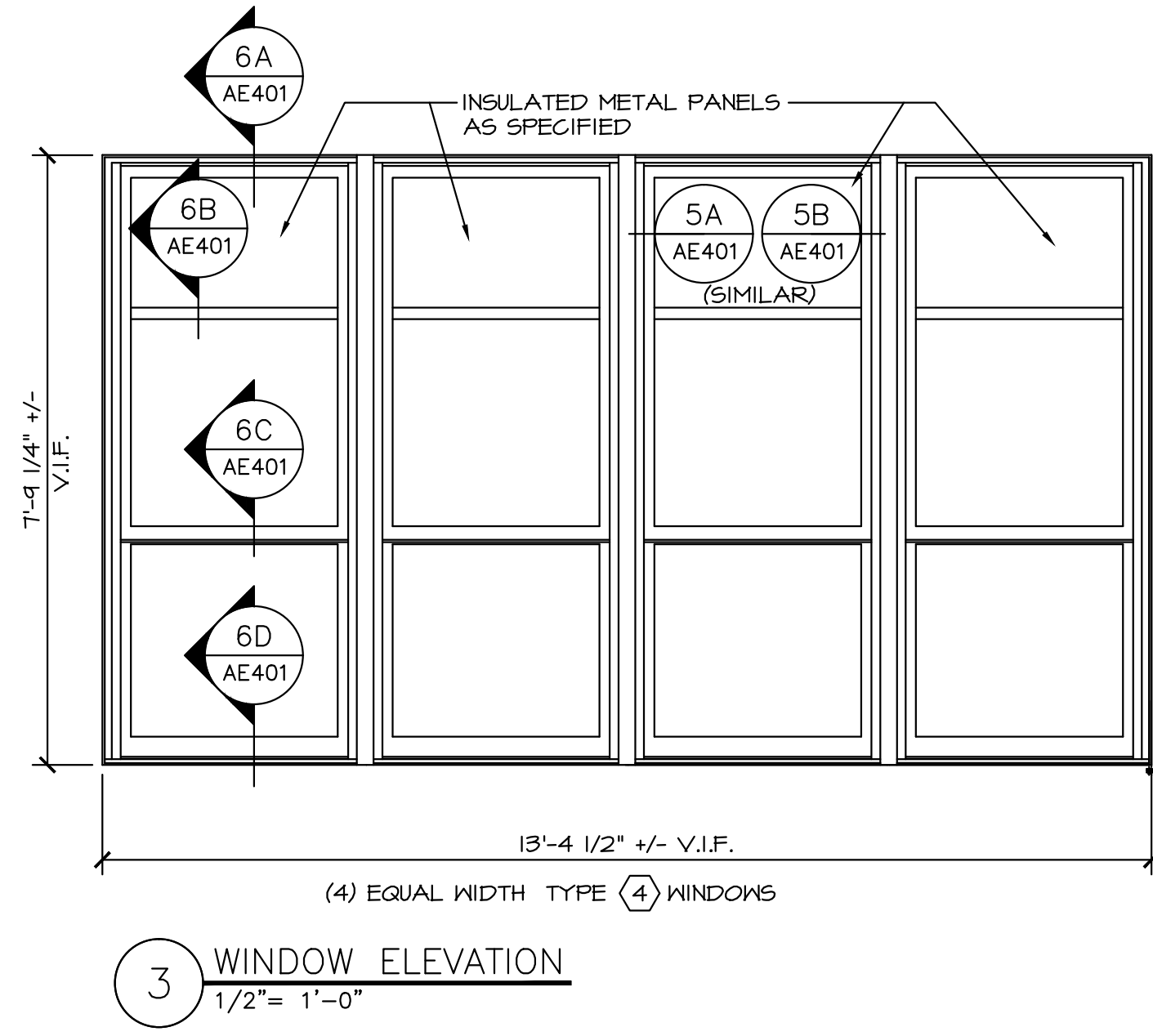
IF THIS SHEET IS NOT 30" x 42"  
FULL SIZE, USE GRAPHIC SCALES



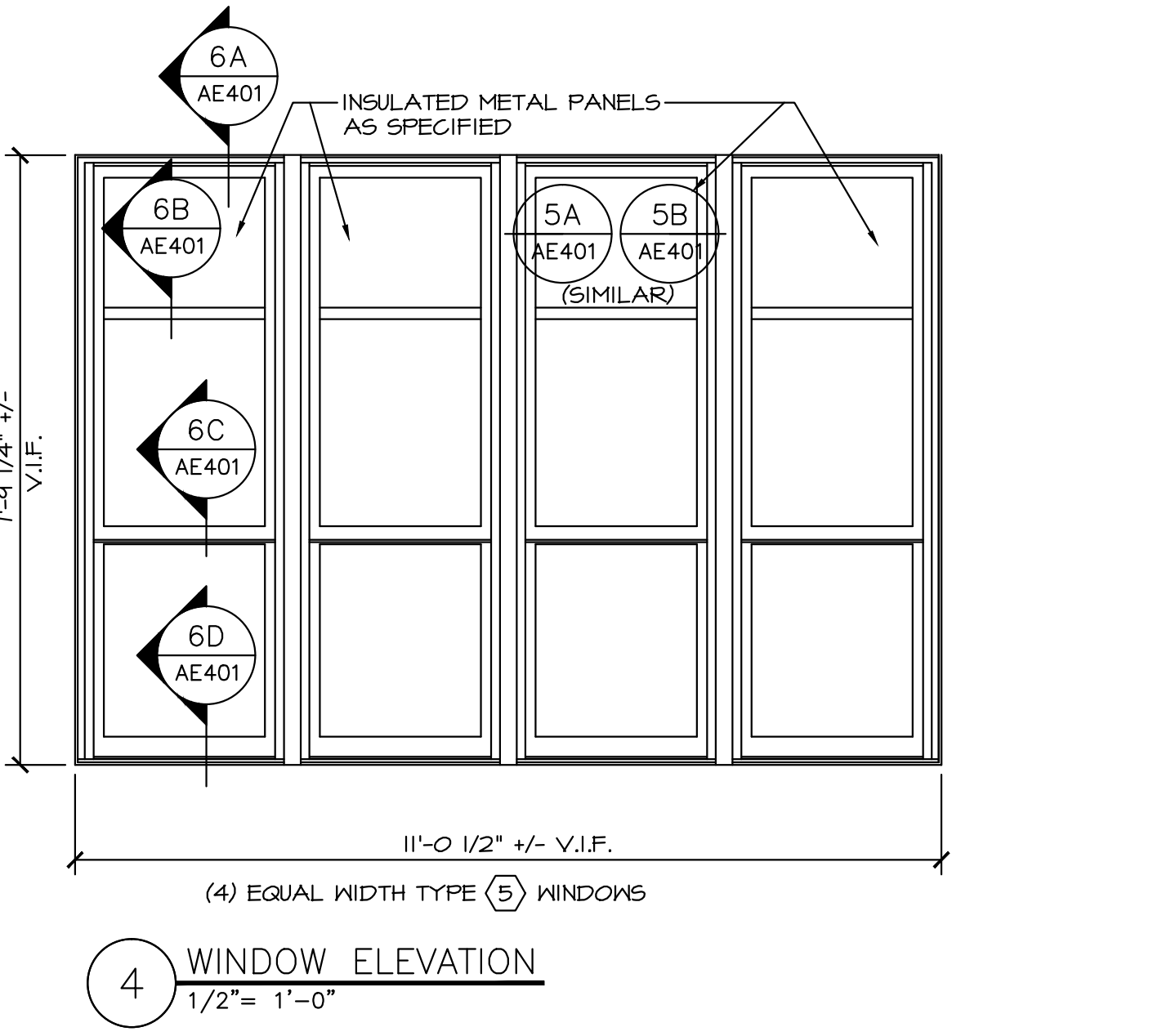
1 WINDOW ELEVATION  
1/2"= 1'-0"



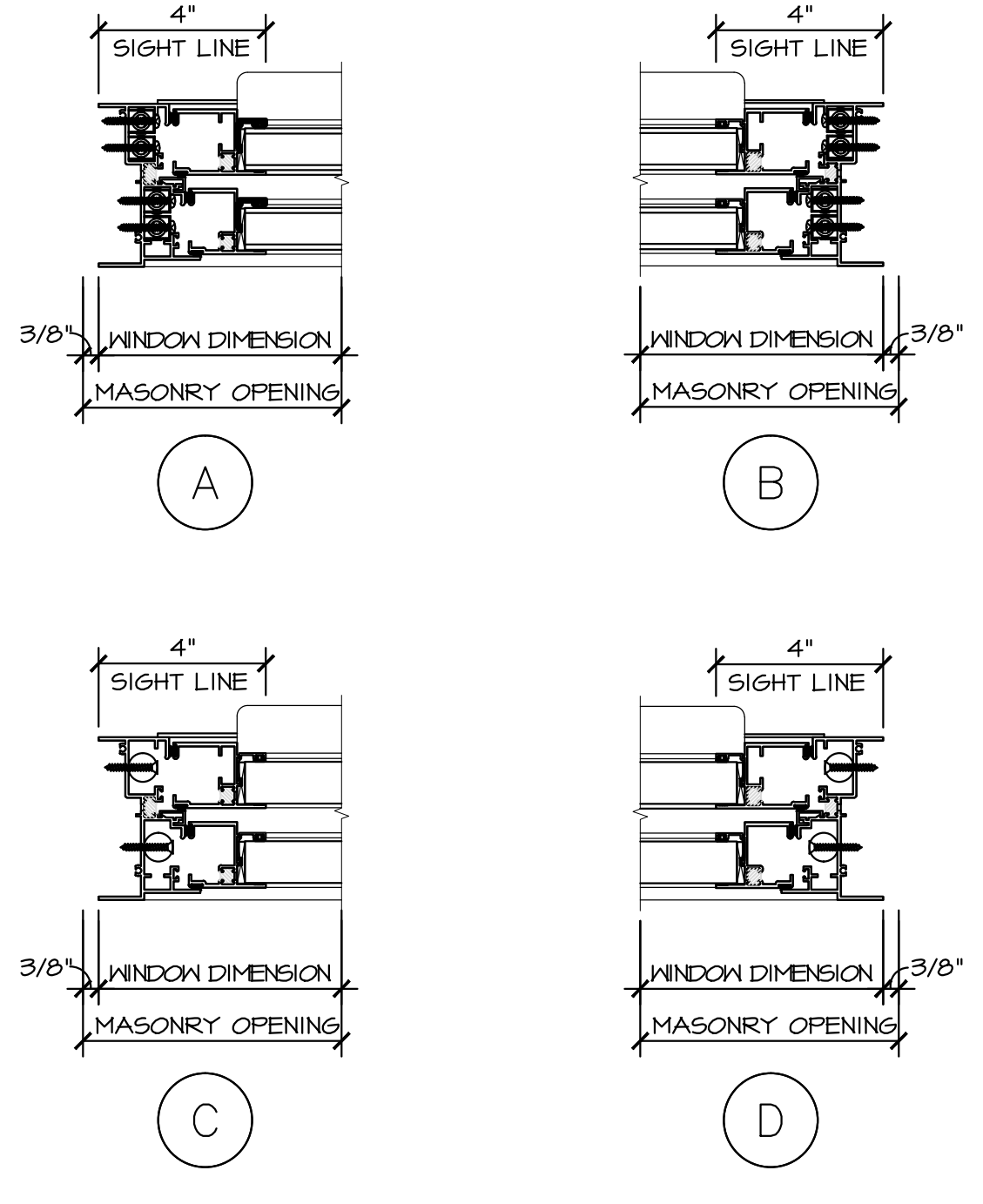
2 WINDOW ELEVATION  
1/2"= 1'-0"



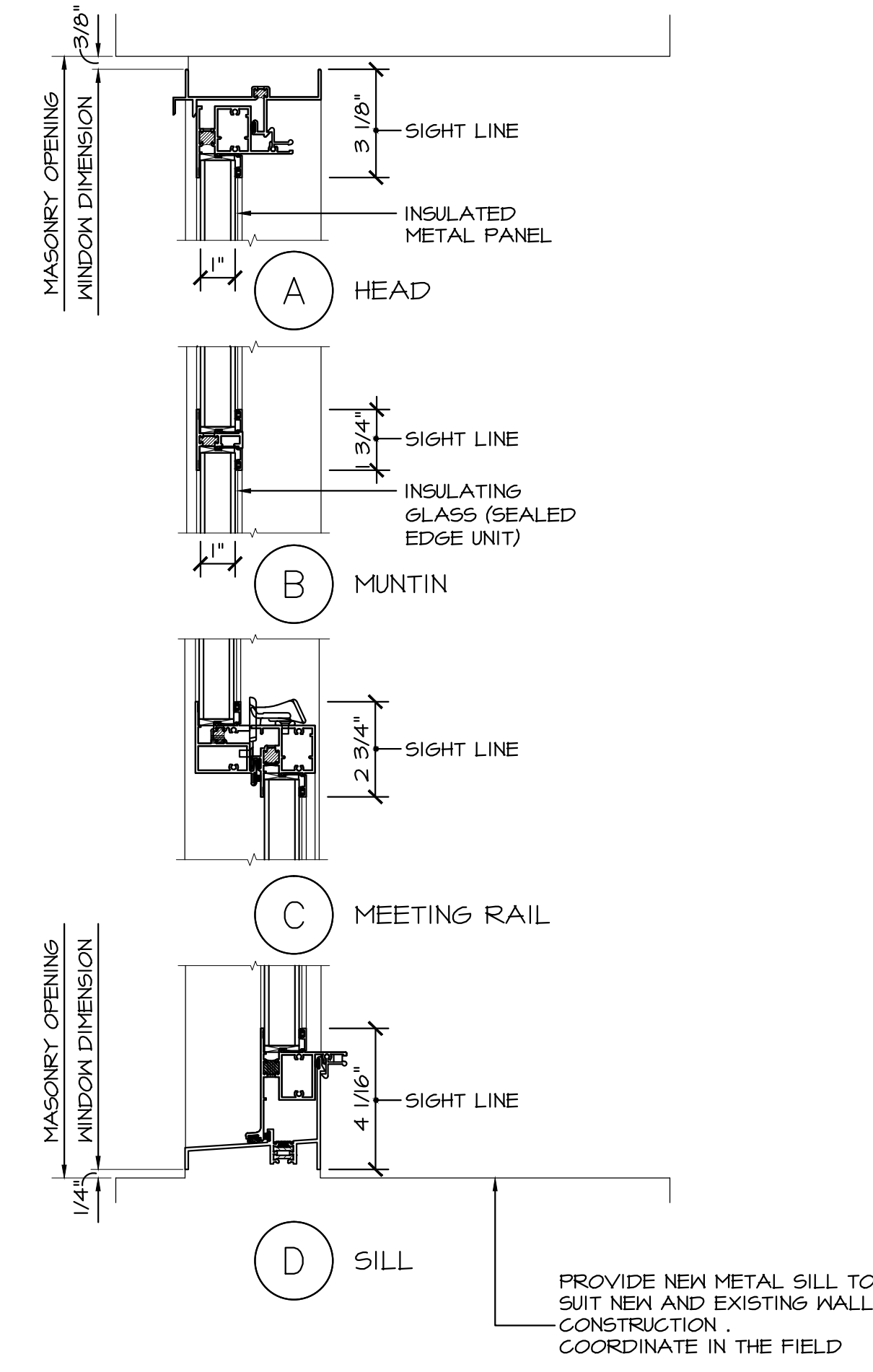
3 WINDOW ELEVATION  
1/2"= 1'-0"



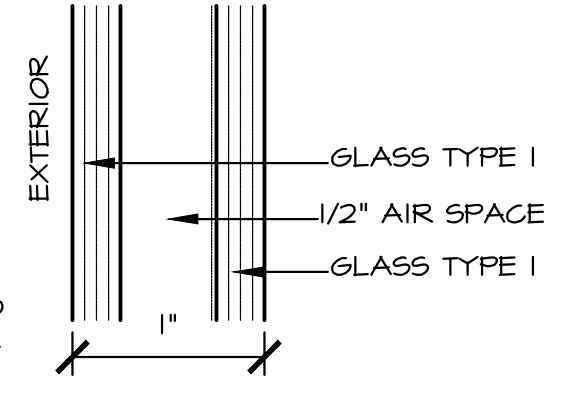
4 WINDOW ELEVATION  
1/2"= 1'-0"



5 JAMB DETAIL OF DOUBLE HUNG WINDOW  
3"= 1'-0"

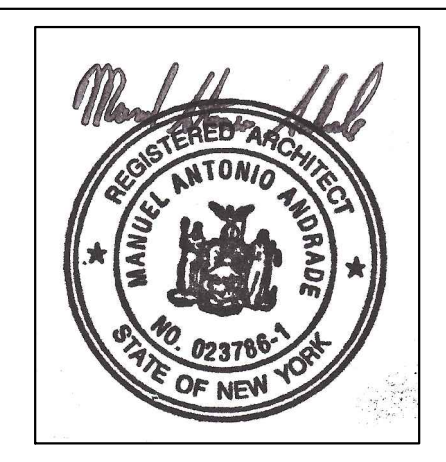
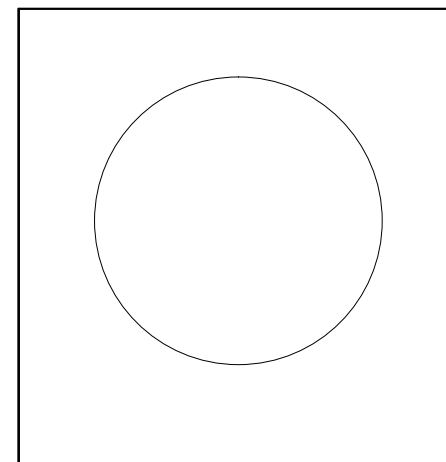


6 SECTION AT DOUBLE HUNG WINDOW  
3"= 1'-0"



7 SEALED EDGE UNIT  
FULL SIZE

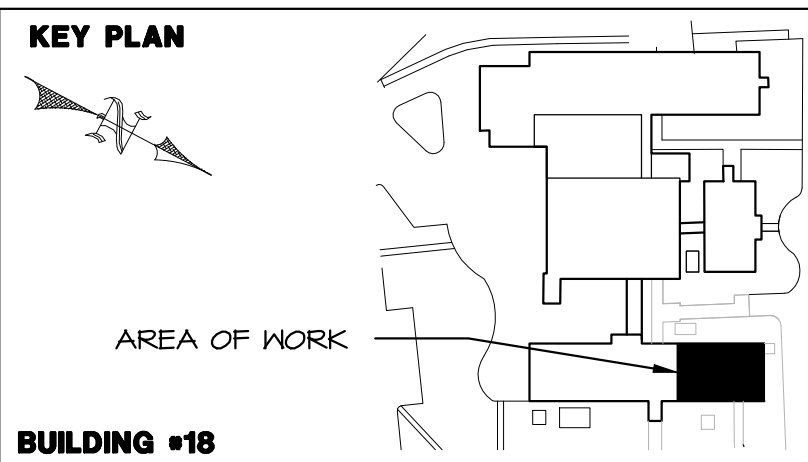
- GENERAL NOTES**
1. REFER TO PLAN/ SHEET AE101 FOR LOCATIONS OF NEW WINDOWS.
  2. REFER TO WINDOW SCHEDULE/ SHEET AE603 FOR EXTERIOR WINDOW SCHEDULE.
  3. PROVIDE SCREENS AND WINDOW HARDWARE AS SPECIFIED.
  4. NEW WINDOWS SHALL MATCH EXISTING CONFIGURATION, SIZE, STYLE AND PROFILE. CONTRACTOR SHALL FIELD VERIFY EXISTING WINDOWS AND PROVIDE SHOP DRAWINGS PRIOR TO FABRICATION.
  5. PROVIDE SAMPLE OF GLAZING TO VA PRIOR TO FABRICATION FOR APPROVAL OF APPEARANCE IN RELATIONSHIP TO THE EXISTING GLAZING TO REMAIN ON BALANCE OF BUILDING.



Revisions	Date

**KI KENNETH IRVING, ARCHITECT P.C.**  
4 MEMORIAL PLAZA SUITE 301, PLEASANTVILLE, N.Y. 10570  
PHONE: (914) 747-0002 • E-MAIL: mandrade@kiarch.com • FAX: (914) 747-9211

NOTE AND READ CAREFULLY:  
The Contractor shall consult and study the requirements of each and every drawing and each specification section of this contract so that he /she may become acquainted with the project as a whole in order to determine how the work of his/hers subcontractor or vendor may affect the work required under this contract.  
Written Specifications are part of this contract



Drawing Title <b>Window Elevations and Details</b>	
Approved: Division Chief	
Approved: Service Director	

Project Title <b>Renovation to Dental Clinic Building 18 Hudson Valley Healthcare System Castle Point, New York</b>		
Building Number <b>18</b>	Checked <b>MA</b>	Drawn <b>DW,JTL, DC</b>
Location <b>Castle Point, New York</b>		

Date <b>04/23/2012</b>
Project No. <b>620A4-09-110</b>
DRAWING NO. <b>AE401</b>
Dwg.200f 52

