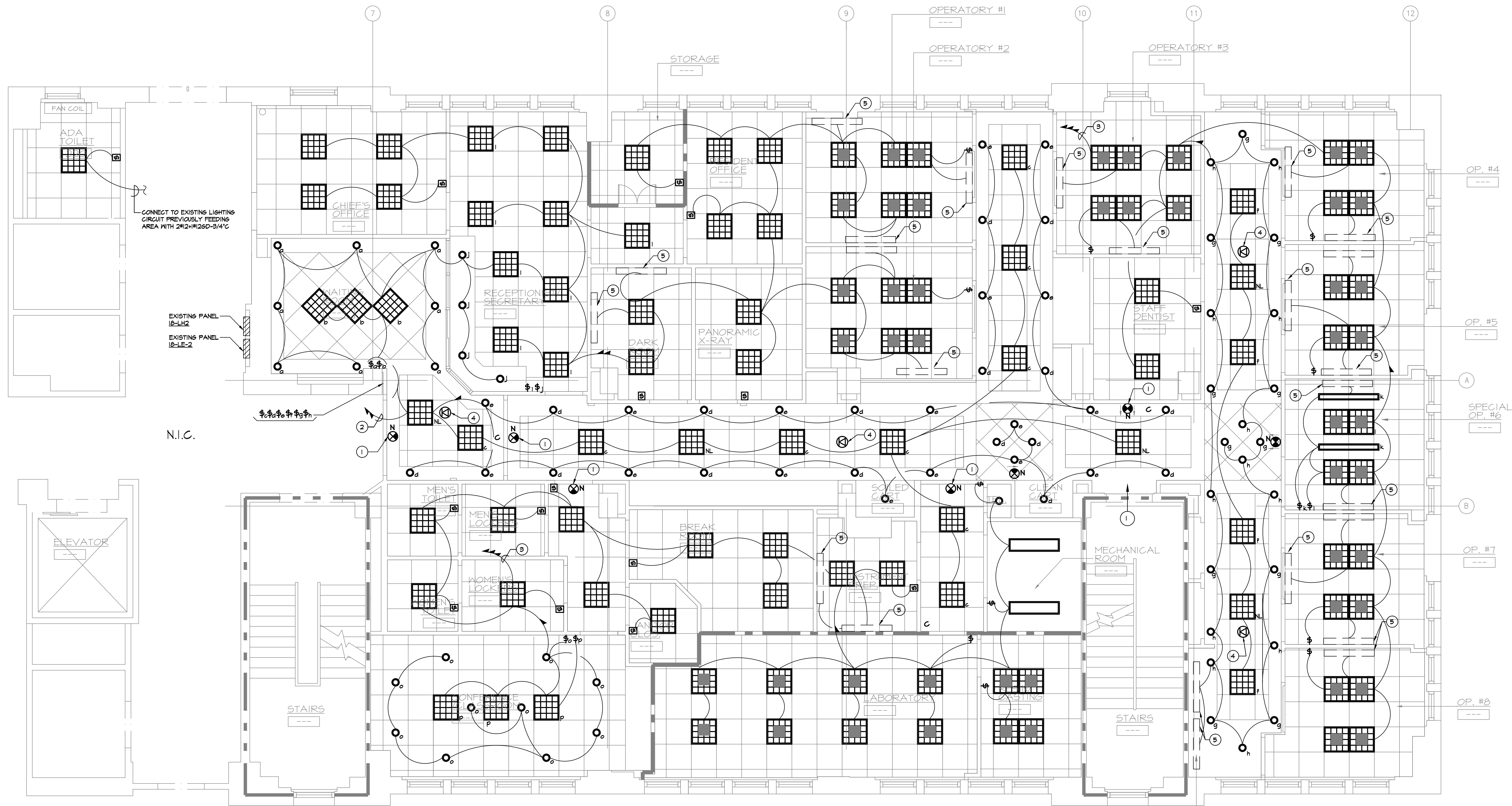
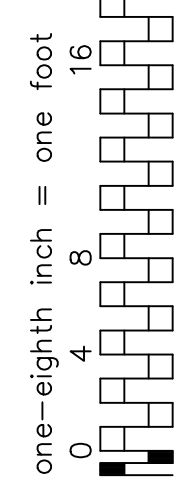
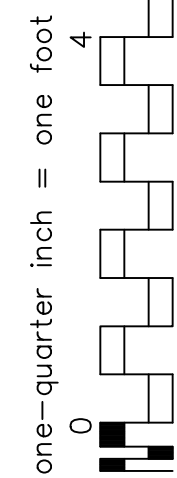
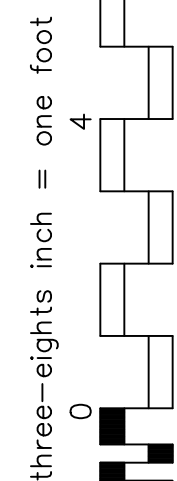
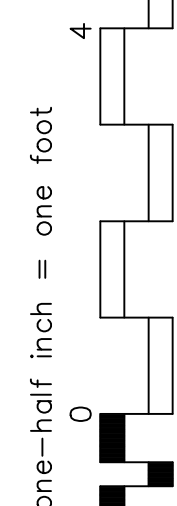
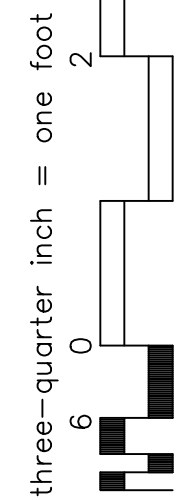


IF THIS SHEET IS NOT 30" x 42"
FULL SIZE, USE GRAPHIC SCALES



1 ELECTRICAL SECOND FLOOR LIGHTING PLAN

Scale : 1/4" = 1'-0"

NOTE:

REFER TO ARCHITECTURAL DRAWINGS FOR LIGHTING FIXTURE SCHEDULE

REFER TO DRAWING EF-001 FOR SYMBOL LIST

KEYED NOTES - EL-100

- 1 NEW MALL MOUNTED EXIT SIGNS SHALL BE WIRED WITH 2#12#125RD-3/4"C TO EXISTING EXIT LIGHTING CIRCUIT ON FLOOR
- 2 NEW HOMERUN 3#12#125RD-3/4"C TO (2) 20A-IP BREAKERS IN EXISTING PANEL 1B-LE-2 OR 1B-LH-2 MADE SPARE BY THIS ALTERATION
- 3 NEW HOMERUN 4#12#125RD-3/4"C TO (2) 20A-IP BREAKERS IN EXISTING PANEL 1B-LE-2 OR 1B-LH-2 MADE SPARE BY THIS ALTERATION
- 4 NEW CEILING MOUNTED SPEAKER SHALL BE CONNECTED TO THE NEAREST EXISTING SPEAKER WITH WIRING TO MATCH EXISTING. VOLUME LEVELS SHALL BE SET WITH CONT.
- 5 UNDER CABINET LED TASK LIGHTING

SMOKE & FIRE RATING LEGEND

EXISTING SMOKE RATED BARRIER (90 MIN. RATING) - - - - -

NEW FIRE RATED BARRIER (1 HR. RATING) - - - - -

EXISTING FIRE RATED BARRIER (2 HR. RATING) - - - - -

EMTG
Consulting Engineers

TEL: 212-268-6465 FAX: 212-268-6467

115 WEST 30TH STREET, SUITE 202, NEW YORK, NY 10001



KI KENNETH IRVING, ARCHITECT P.C.

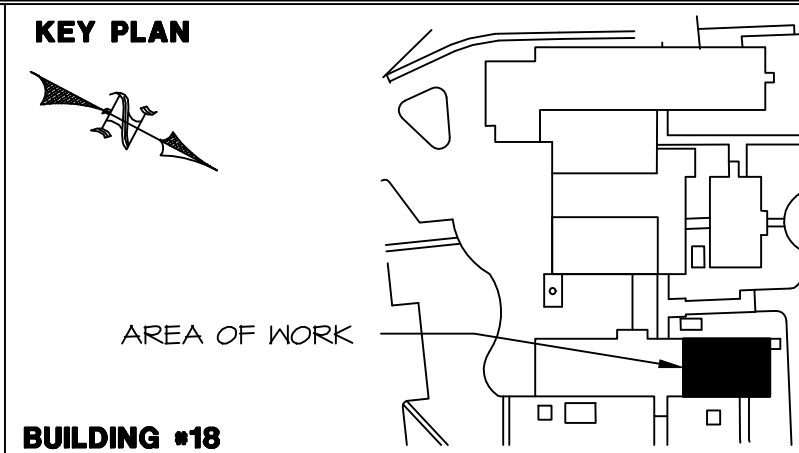
42 MEMORIAL PLAZA, SUITE 301, PLEASANTVILLE, N.Y. 10570

PHONE: (914) 747-0002 E-MAIL: kmandrade@kiorch.com FAX: (914) 747-9211

NOTE AND READ CAREFULLY:

The Contractor shall consult and study the requirements of each and every drawing and each specification section of this contract so that he/she may become acquainted with the project as a whole in order to determine how the work of his/her subcontractor or vendor may affect the work required under this contract.

Written Specifications are part of this contract



Drawing Title

ELECTRICAL LIGHTING SECOND FLOOR

Approved: Division Chief

Approved: Service Director

Project Title

Renovation to Dental Clinic Building 18 Healthcare System Castle Point, New York

Building Number 18

Checked SL

Drawn WS/DH

Location Castle Point, New York

Date 4/23/2012

Project No. 620-A409-110

DRAWING NO. EL100

Dwg. 510f 52

