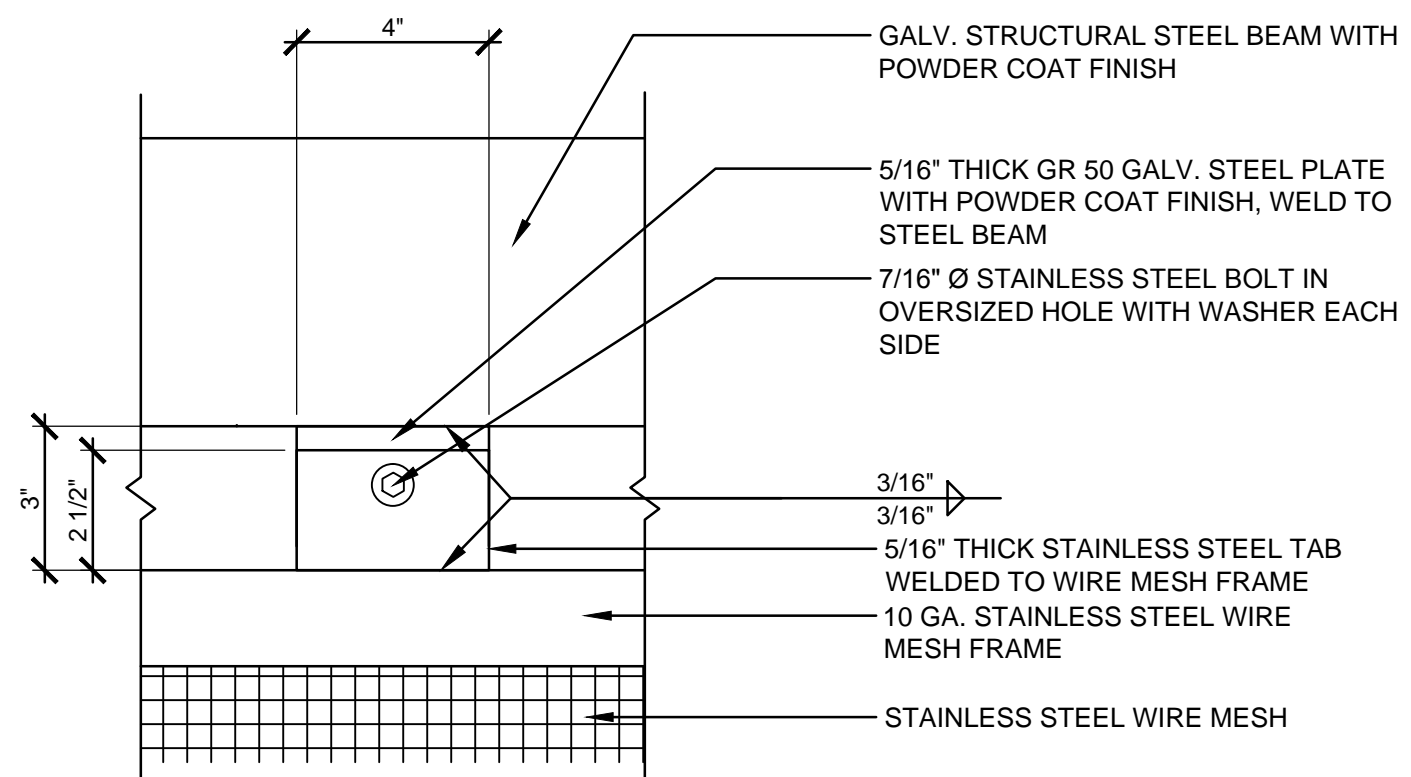
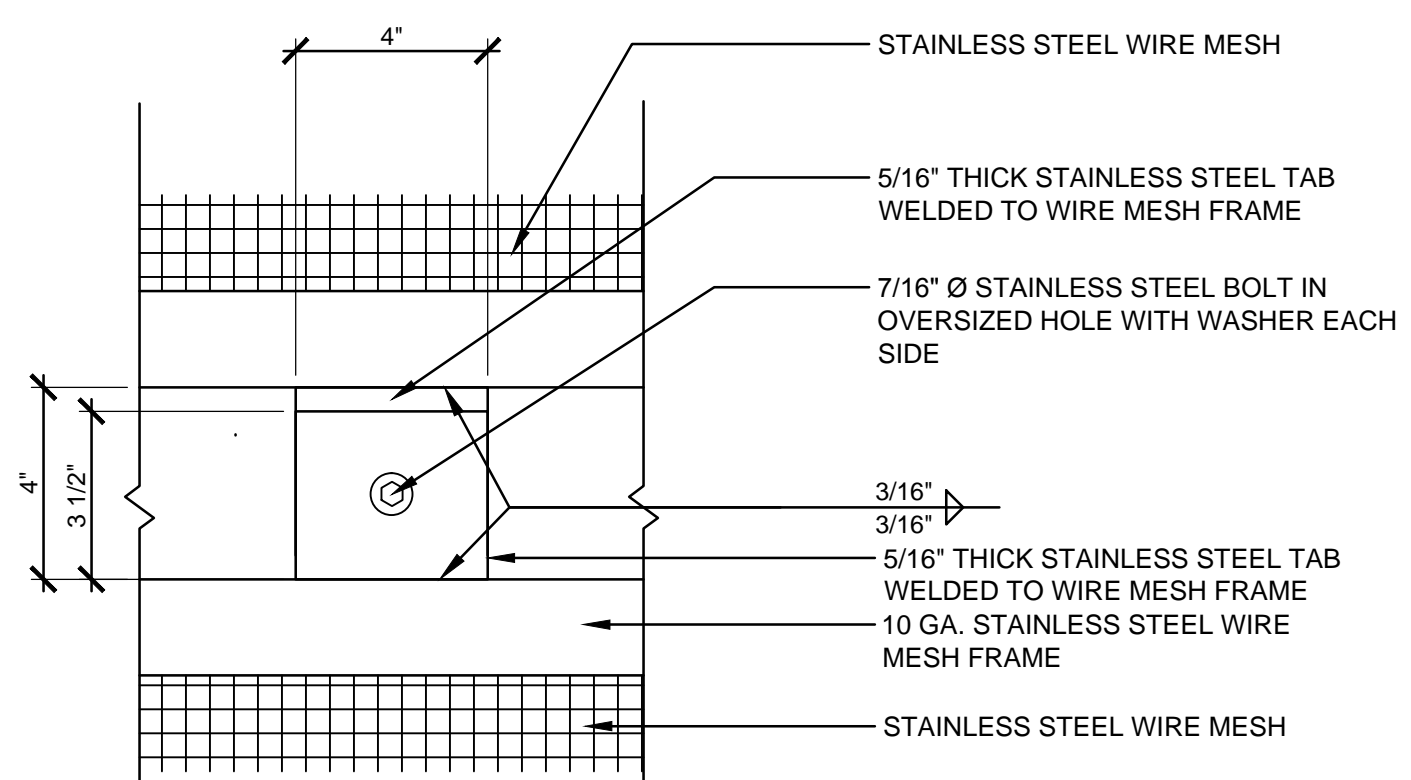


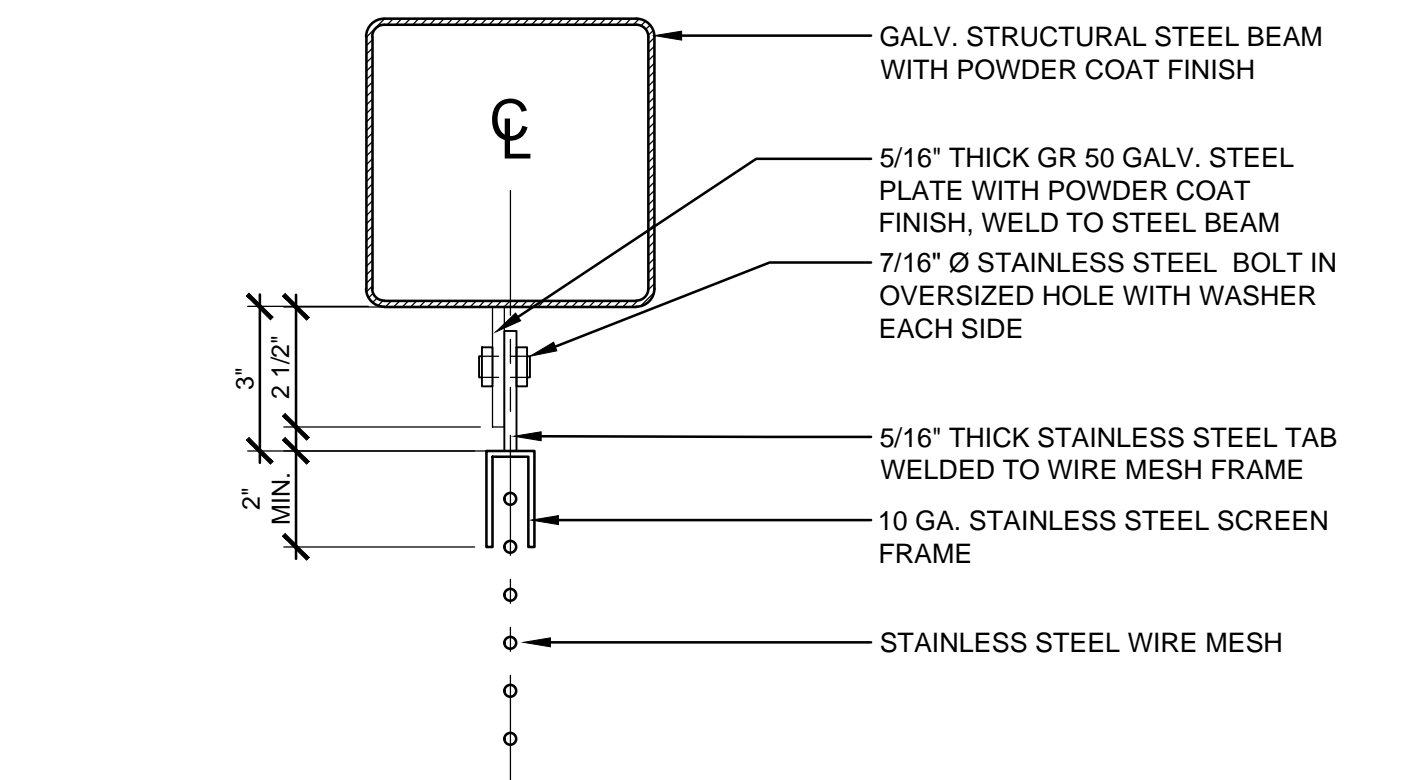
three inches = one foot
 one and one half inches = one foot
 one inch = one foot
 three quarters inch = one foot
 one half inch = one foot
 three eighths inch = one foot
 one quarter inch = one foot
 one eighth inch = one foot



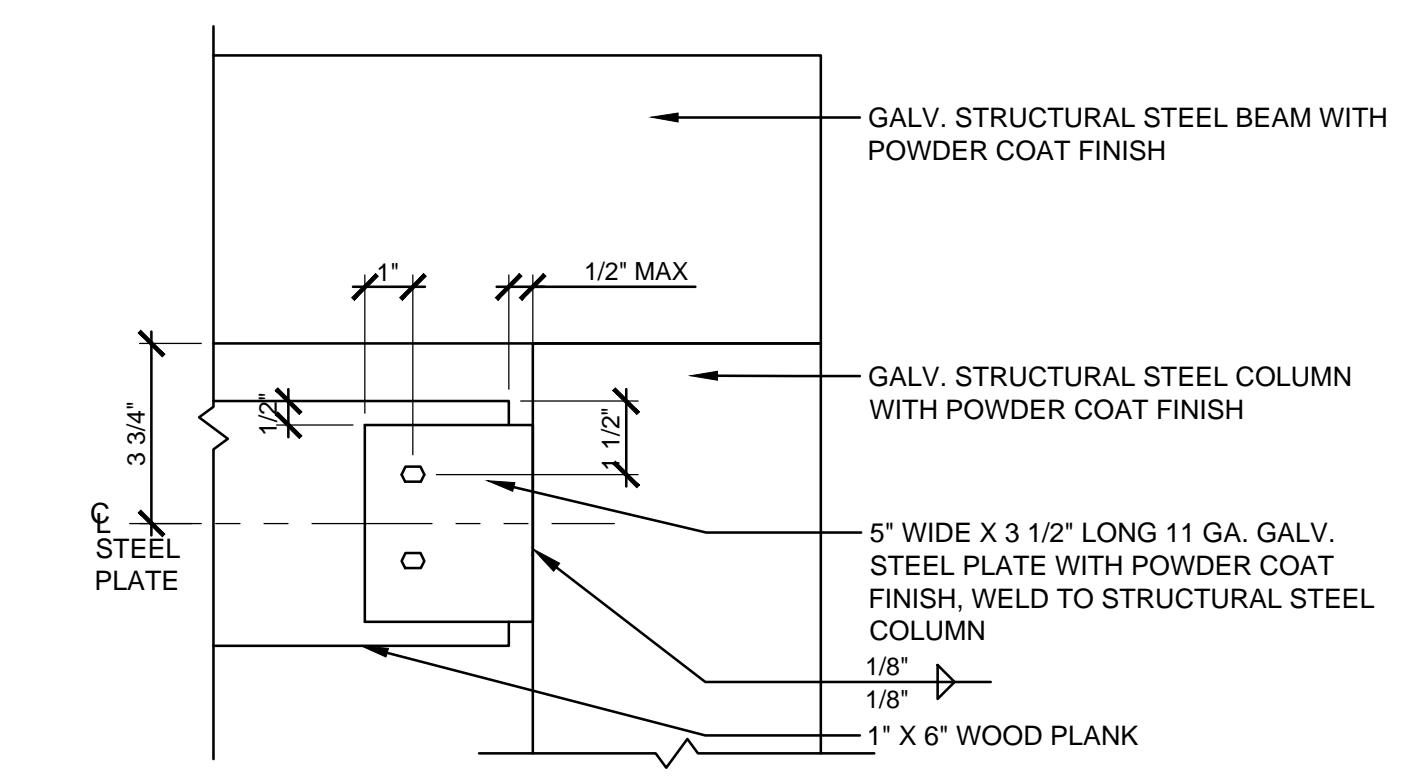
1 SCREEN CONNECTION @ STEEL BEAM
 3" = 1'-0"



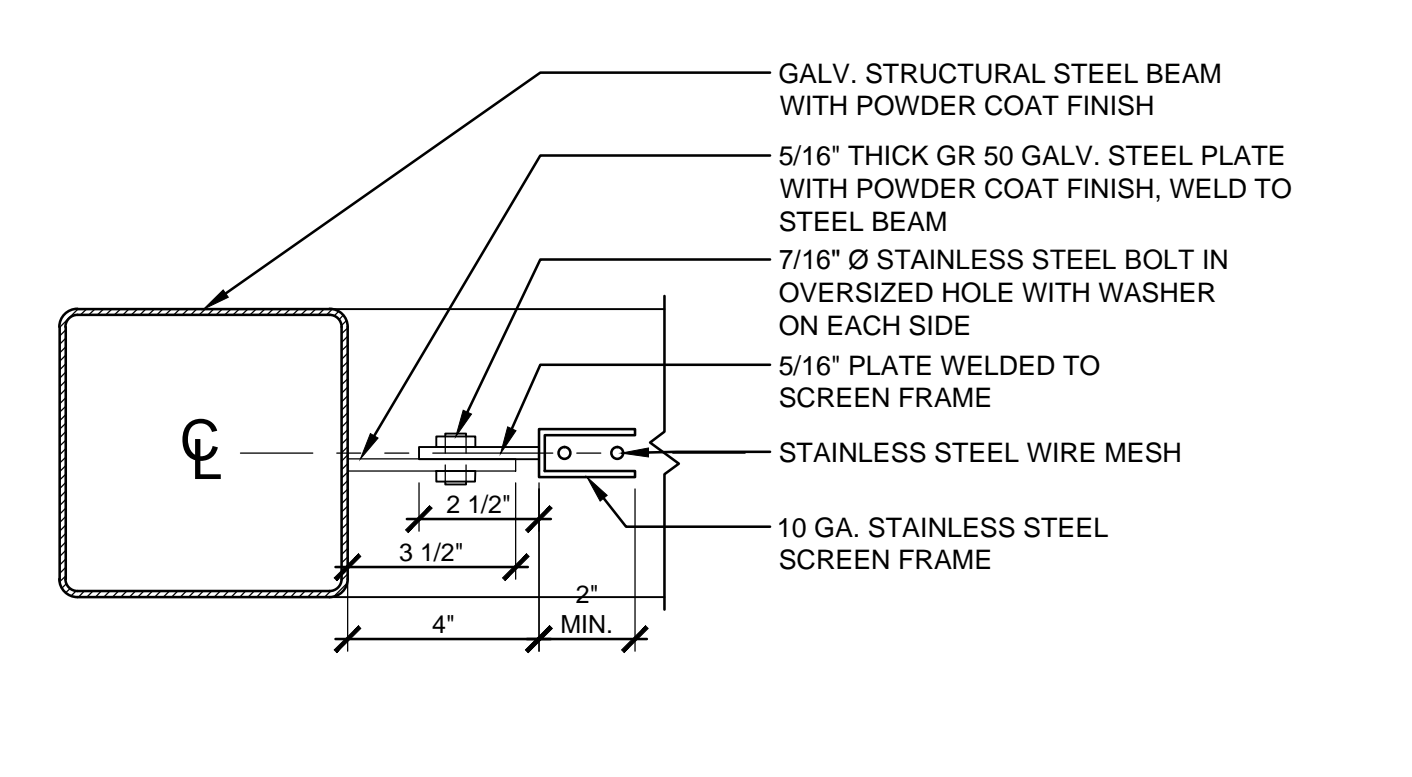
2 SCREEN TO SCREEN CONNECTION
 3" = 1'-0"



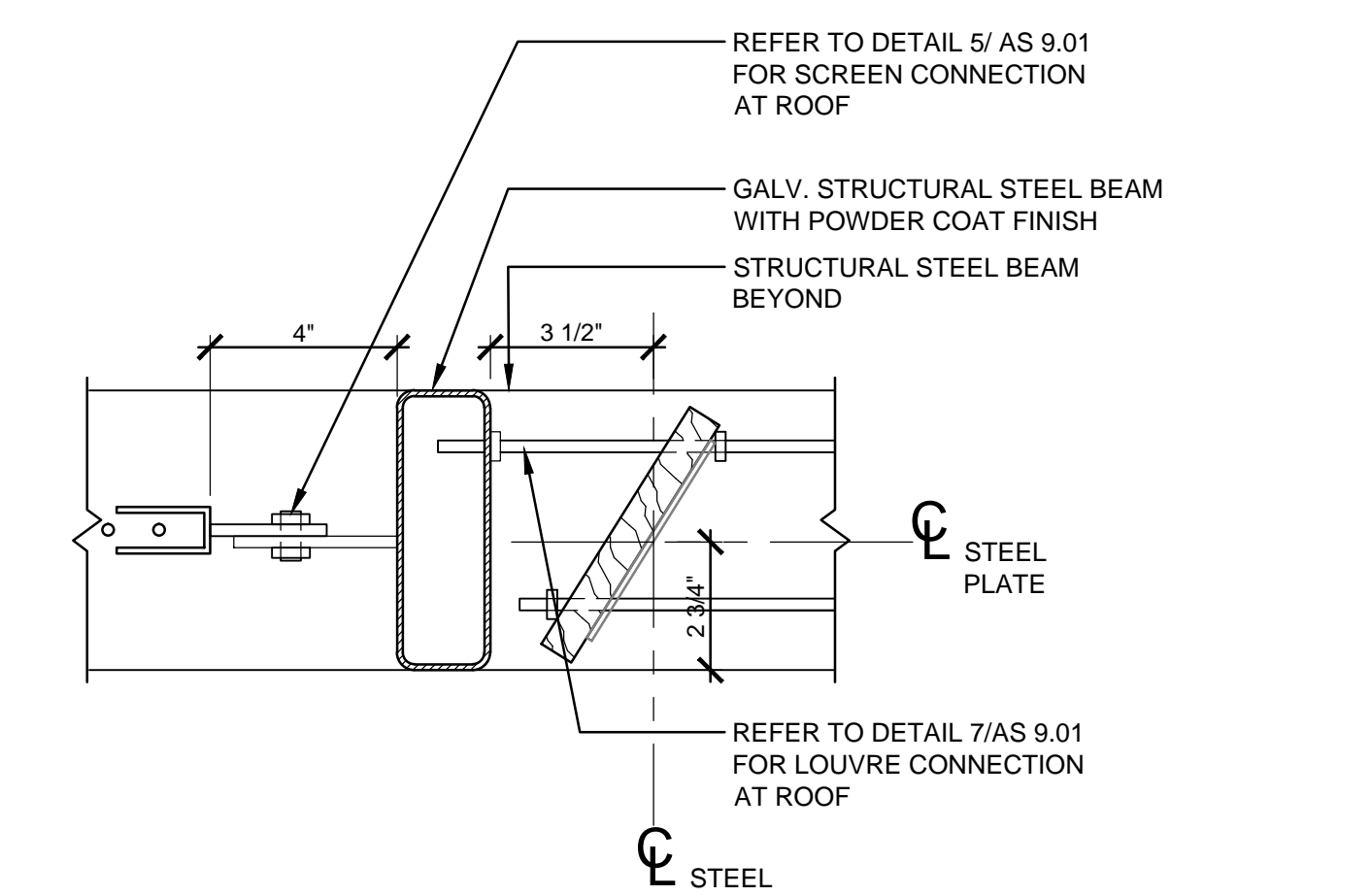
3 SECTION @ SCREEN AND STEEL BEAM CONNECTION
 3" = 1'-0"



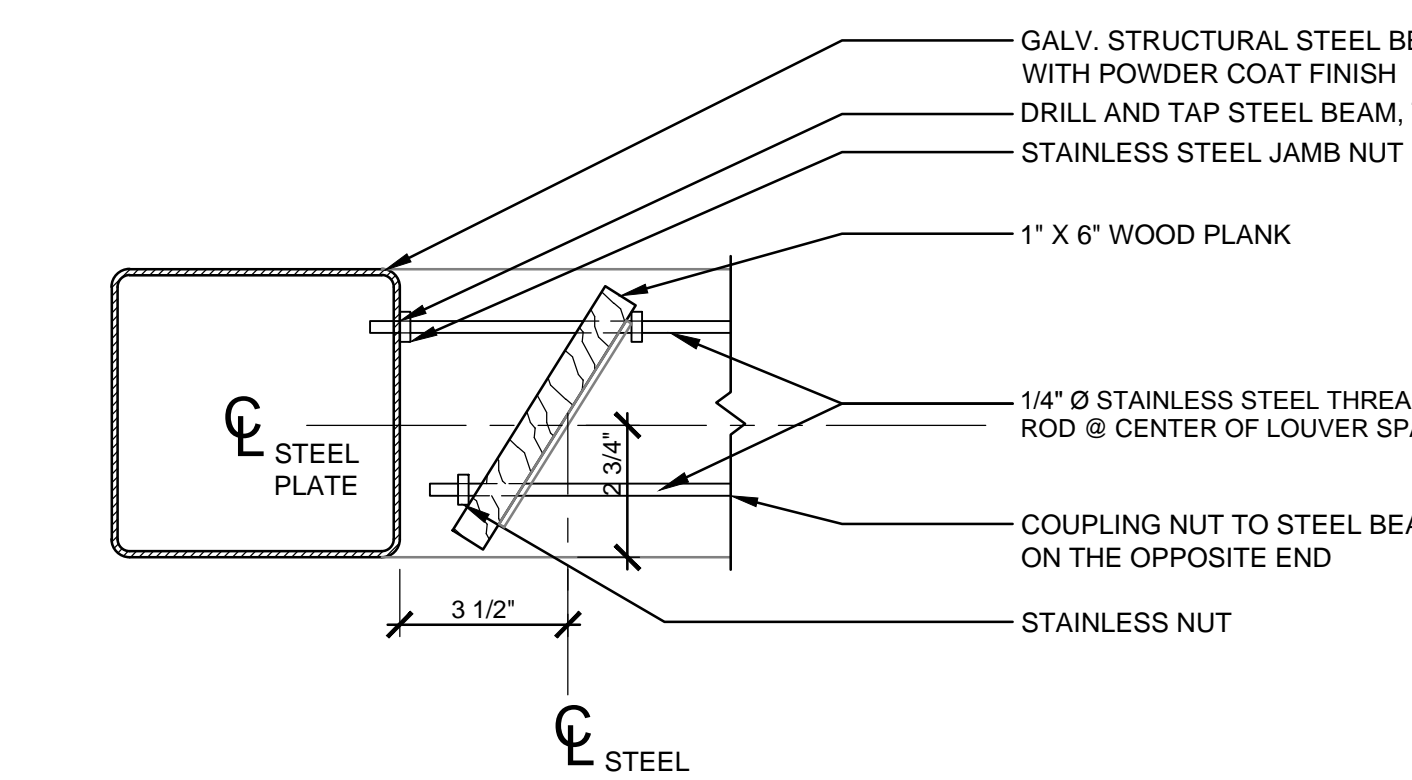
4 WOOD LOUVER CONNECTION TO STEEL COLUMN
 3" = 1'-0"



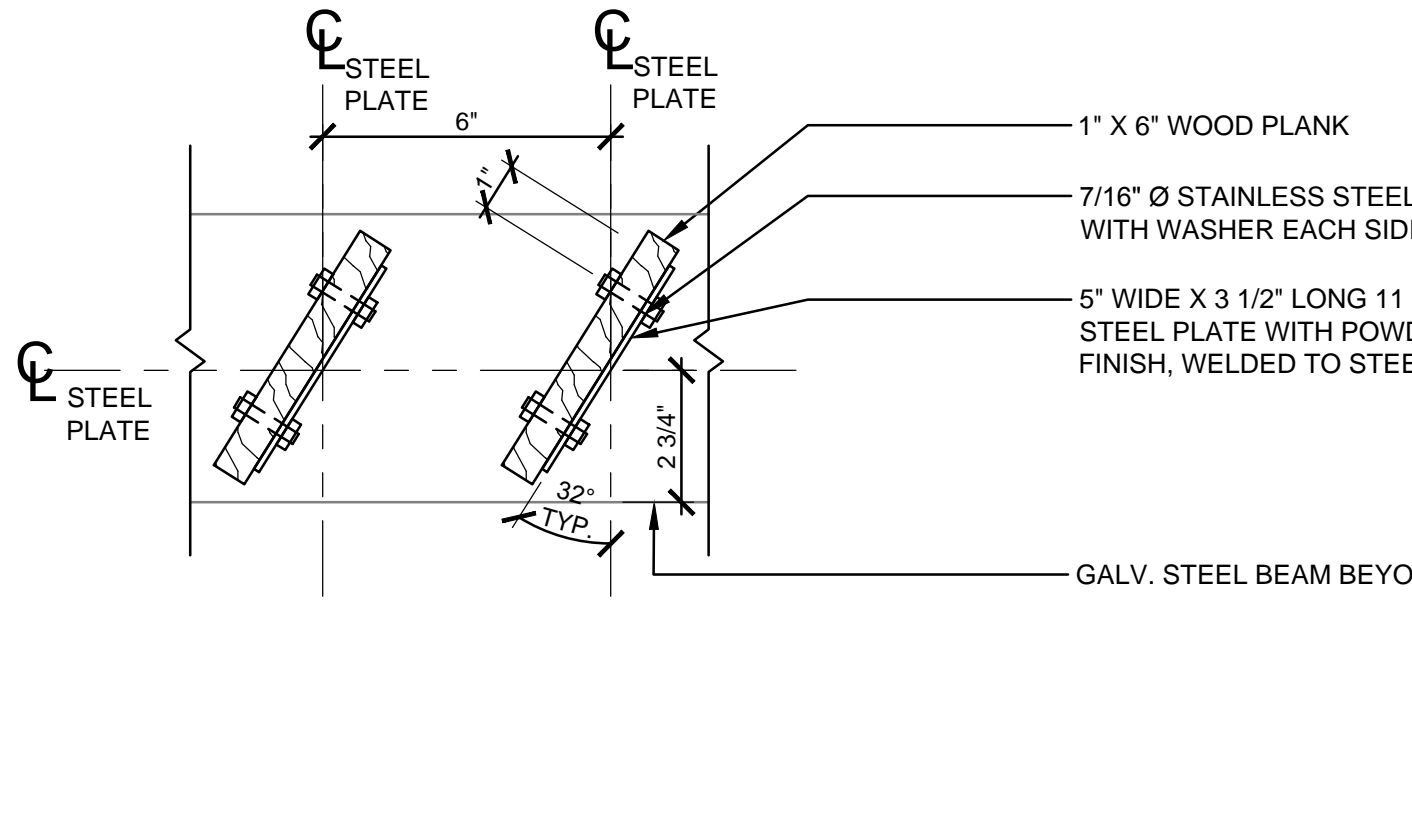
5 SECTION @ ROOF SCREEN AND STEEL BEAM CONNECTION
 3" = 1'-0"



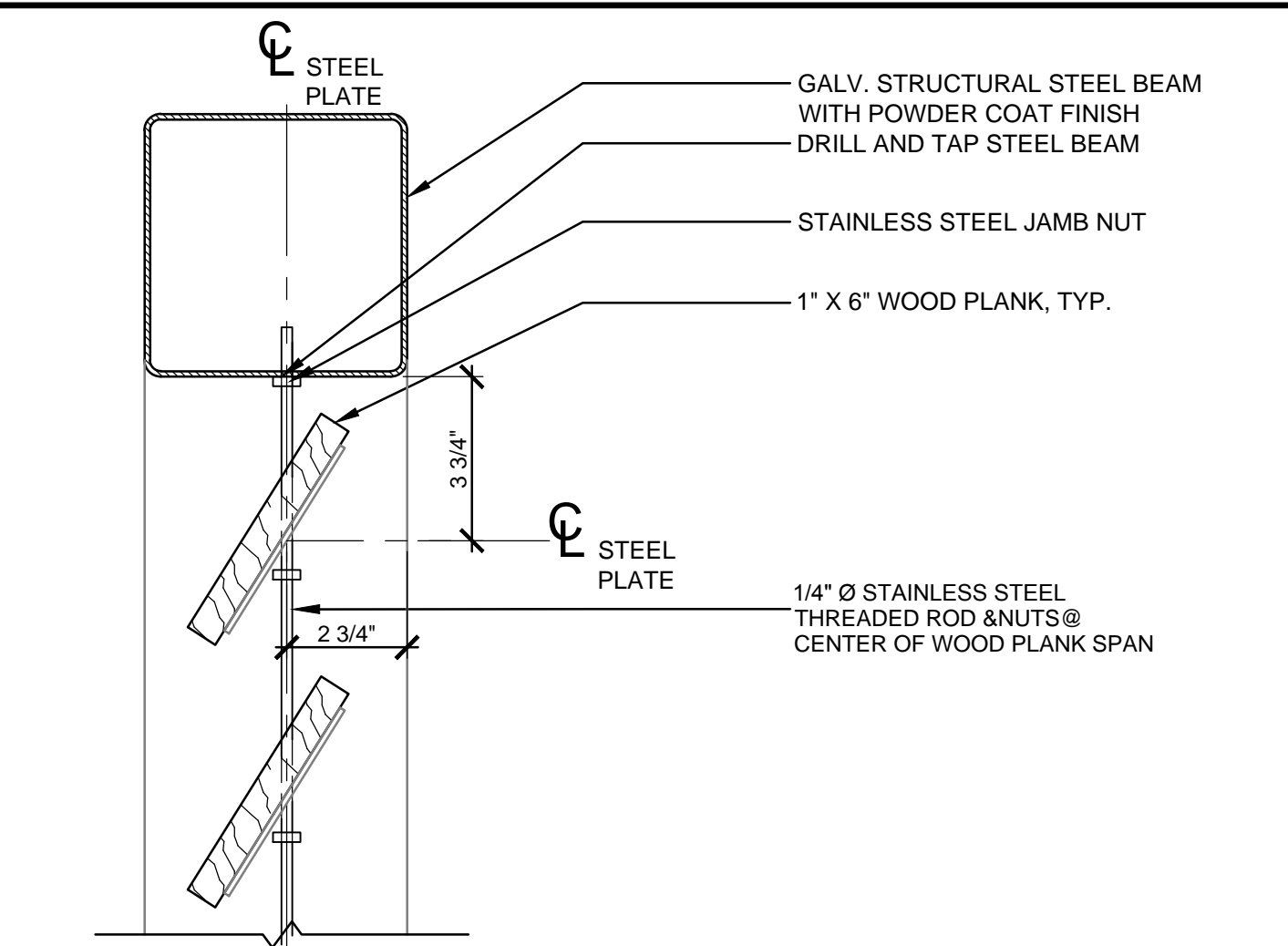
6 SECTION AT ROOF LOUVER AND ROOF SCREEN
 3" = 1'-0"



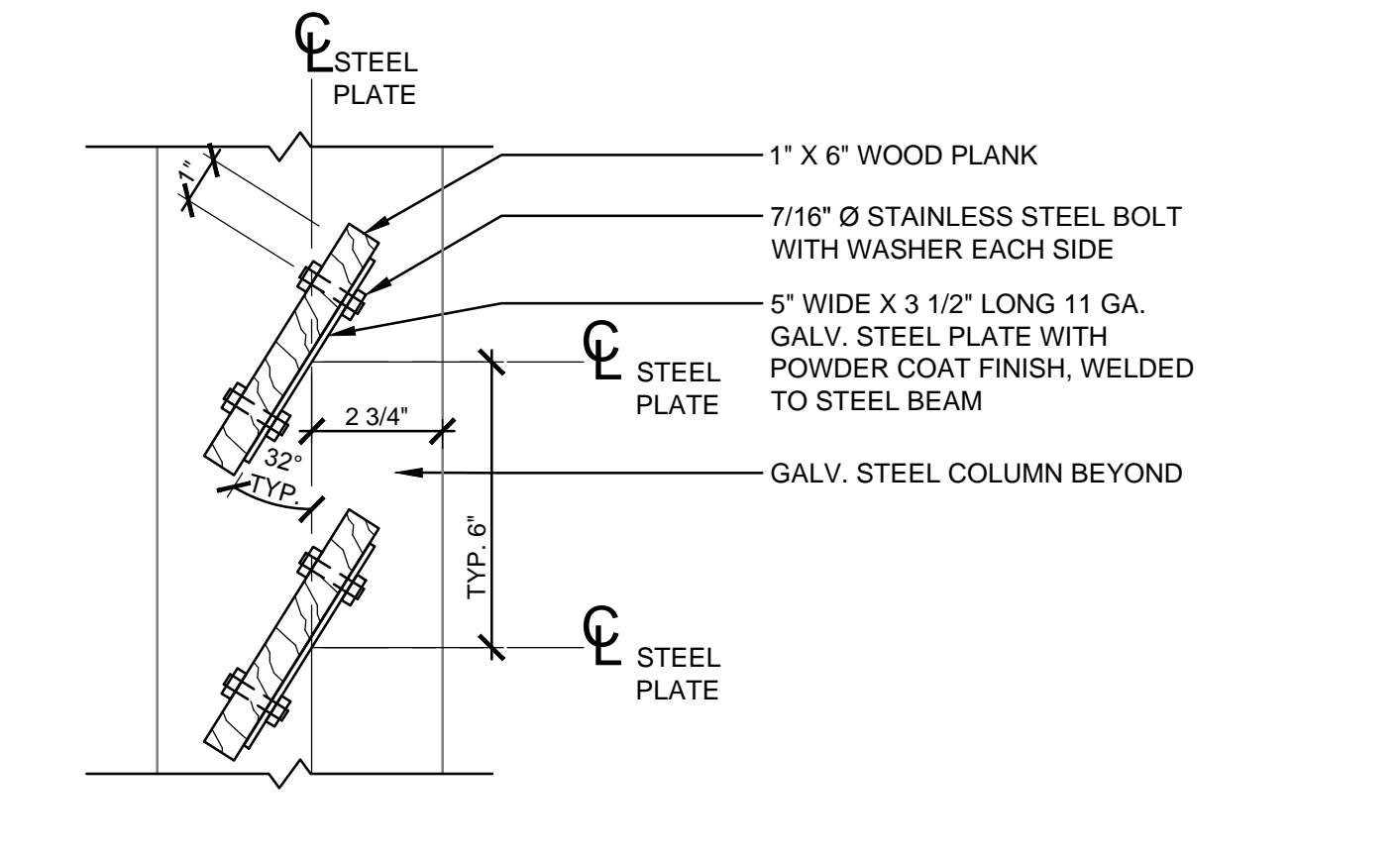
7 THREADED ROD AT LOUVER
 3" = 1'-0"



8 ROOF LOUVER CONNECTION @ STEEL BEAM
 3" = 1'-0"



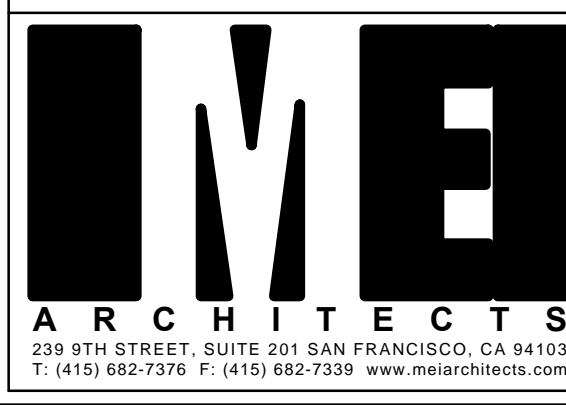
9 VERTICAL LOUVER
 3" = 1'-0"



10 VERTICAL LOUVER
 3" = 1'-0"

CONSULTANTS:

ARCHITECT/ENGINEERS:



Myerich

Drawing Title		Project Title		Project Number	
DETAILS		RENOVATE CANTEEN PLAZA BUILDING 101		640-12-124P	
Approved Project Director		Location		Building Number	
		3801 Miranda Ave. Palo Alto, CA 94304		101	
Date		Checked		Drawn	
MAY 16, 2014		SB		CK	
Dwg. of		AS9.01			

Office of Construction and Facilities Management
 Department of Veterans Affairs

