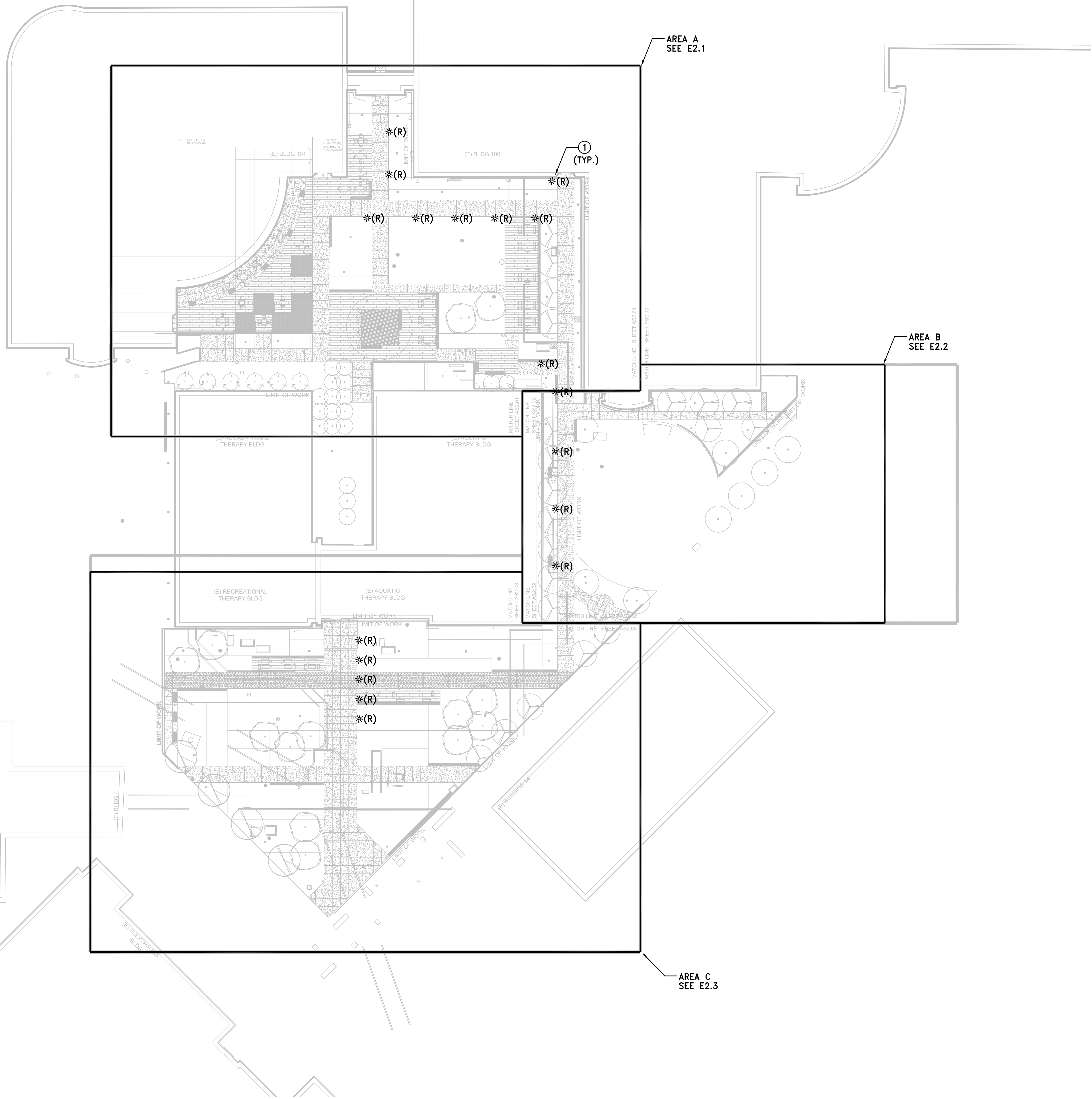


SHEET NOTES

- ① REMOVE EXISTING LIGHT FIXTURE AND ASSOCIATED WIRING BACK TO THE PANEL.



① DEMOLITION SITE PLAN - ELECTRICAL  
SCALE: 1"=30'-0"



CONSULTANTS:

**F. W. A. ASSOCIATES, INC.**  
CONSULTING ENGINEERS  
330 FRANKLIN, SUITE 400, OAKLAND, CA 94607  
PHONE: (510) 763-7475 FAX: (510) 763-7033

ARCHITECT/ENGINEERS:

**MEI**  
ARCHITECTS  
239 9TH STREET SAN FRANCISCO, CA 94113  
T: (415) 703-0328 F: (415) 707-6328 www.meiarchitects.com

Drawing Title  
**DEMOLITION SITE PLAN - ELECTRICAL**

Approved Project Director

Project Title  
**RENOVATE CANTEEN PLAZA BUILDING 101**

Location  
3801 Miranda Ave. Palo Alto, CA 94304

Date  
MAY 16, 2014

Checked  
SJ/MF

Drawn  
FWA TEAM

Project Number  
640-12-124P

Building Number  
101

Drawing Number

**E1.1**  
Dwg. of

Office of  
Construction  
and Facilities  
Management

Department of  
Veterans Affairs



A

B

C

D

E

F

A

B

C

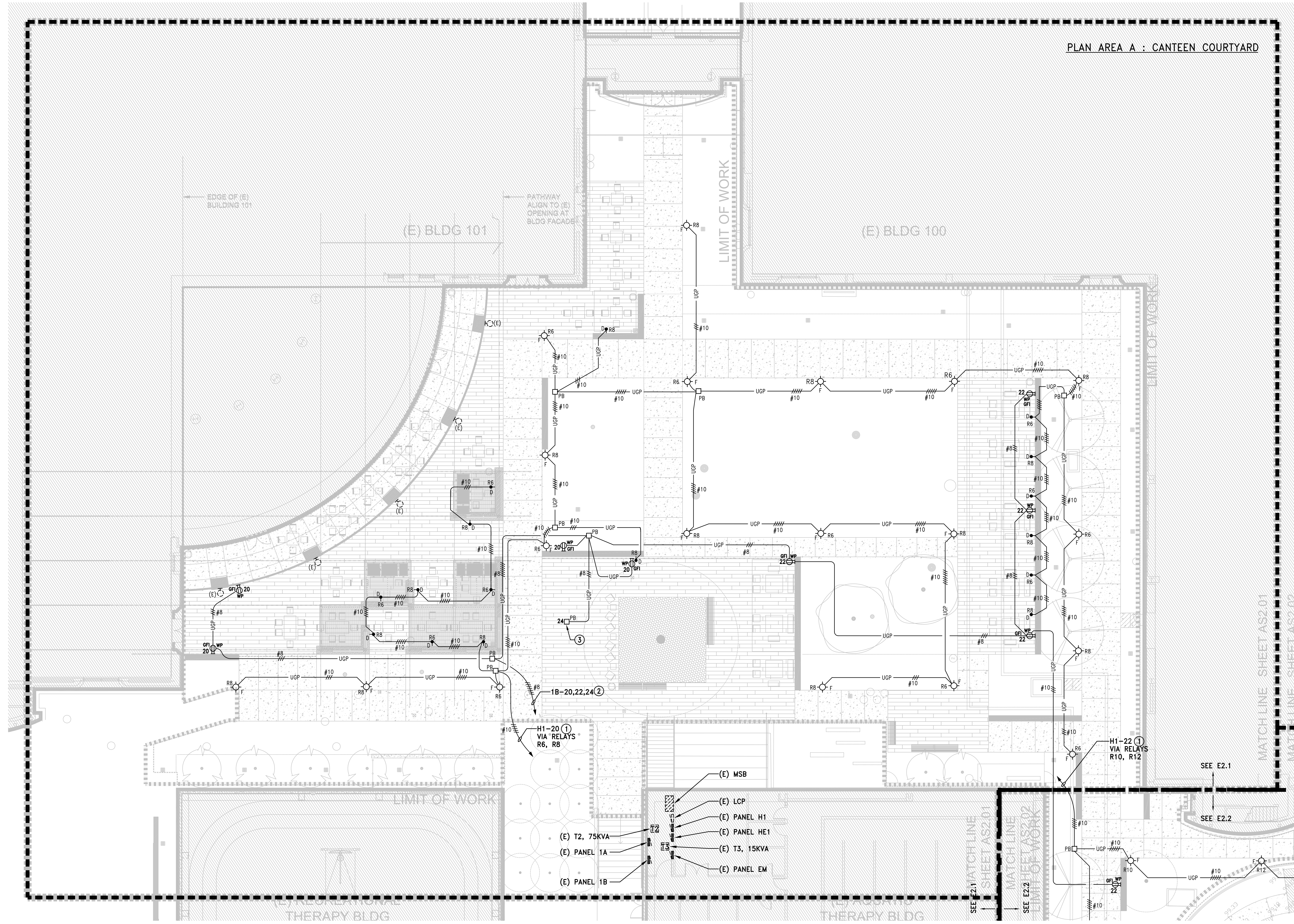
D

E

F

three inches = one foot  
one and one half inches = one foot  
one inch = one foot  
three quarters inch = one foot  
one half inch = one foot  
three eighths inch = one foot  
one quarter inch = one foot  
one eighth inch = one foot  
one sixteenth inch = one foot

02/08/14 Ver 2012/12/31/2352 E2.1.dwg 5-02-17 02:25:32 PM Justin



- SHEET NOTES**
- ① CONNECT TO (E) PANEL "H1" IN AQUATIC THERAPY BUILDING AND VIA PHOTOCELL/LIGHTING CONTROL PANEL "LCP" IN AQUATIC THERAPY BUILDING.
  - ② 1" C, 6#8 + 1#8G.
  - ③ COORDINATE WITH VA FOR EXACT PULLBOX LOCATION.

**SITE PLAN AREA A - ELECTRICAL**  
SCALE: 1"=10'-0"

Revisions	Date

**CONSULTANTS:**

**F.W.A. ASSOCIATES, INC.**  
CONSULTING ENGINEERS

330 FRANKLIN, SUITE 400, OAKLAND, CA 94607  
PHONE: (510) 763-7475 FAX: (510) 763-7033

**ARCHITECT/ENGINEERS:**

**MEI ARCHITECTS**

239 9TH STREET SAN FRANCISCO, CA 94113  
T: (415) 703-0326 F: (415) 707-6328 www.meiarchitects.com

**Drawing Title**  
**SITE PLAN AREA A - ELECTRICAL**

**Approved Project Director**

**Project Title**  
**RENOVATE CANTEN PLAZA BUILDING 101**

**Location**  
3801 Miranda Ave. Palo Alto, CA 94304

**Date**  
MAY 16, 2014

**Checked**  
SJ/MF

**Drawn**  
FWA TEAM

**Project Number**  
640-12-124P

**Building Number**  
101

**Drawing Number**  
**E2.1**

**Dwg. of**

**Office of Construction and Facilities Management**

**Department of Veterans Affairs**



A

B

C

D

E

F

A

B

C

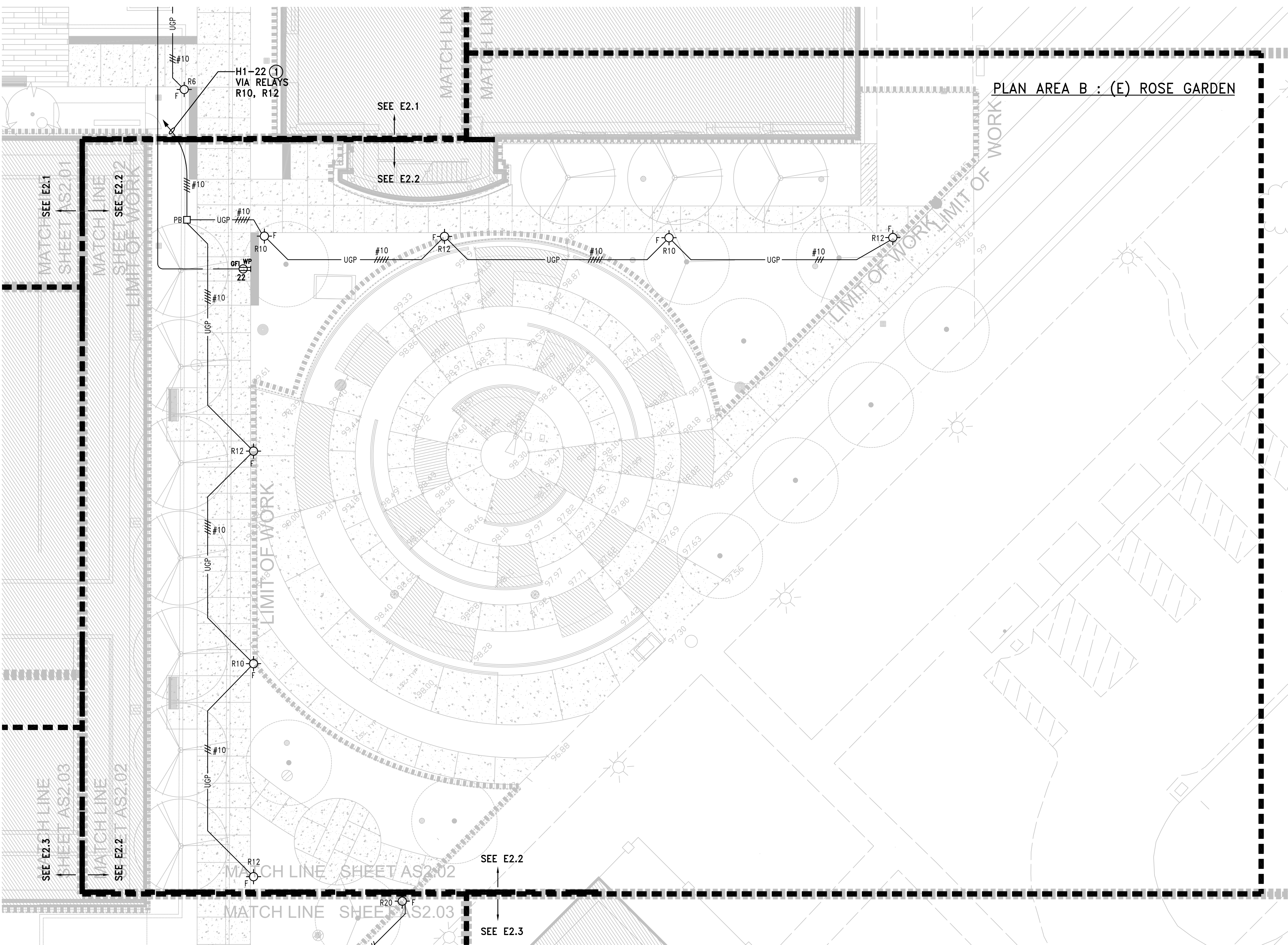
D

E

F

three inches = one foot  
one and one half inches = one foot  
one inch = one foot  
three quarters inch = one foot  
one half inch = one foot  
three eighths inch = one foot  
one quarter inch = one foot  
one eighth inch = one foot

C:\Jobs\Year 2012\1232\1232 E2.2.dwg 5-02-17 02:28:55 PM Justin



SHEET NOTES

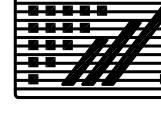
- ① CONNECT TO (E) PANEL "H1" IN AQUATIC THERAPY BUILDING AND VIA PHOTOCELL/LIGHTING CONTROL PANEL "LCP" IN AQUATIC THERAPY BUILDING.

① SITE PLAN AREA B - ELECTRICAL  
SCALE: 1"=10'-0"



Revisions	Date

**CONSULTANTS:**



**F. W. A. ASSOCIATES, INC.**  
CONSULTING ENGINEERS


330 FRANKLIN, SUITE 400, OAKLAND, CA 94607  
PHONE: (510) 763-7475 FAX: (510) 763-7033

**ARCHITECT/ENGINEERS:**

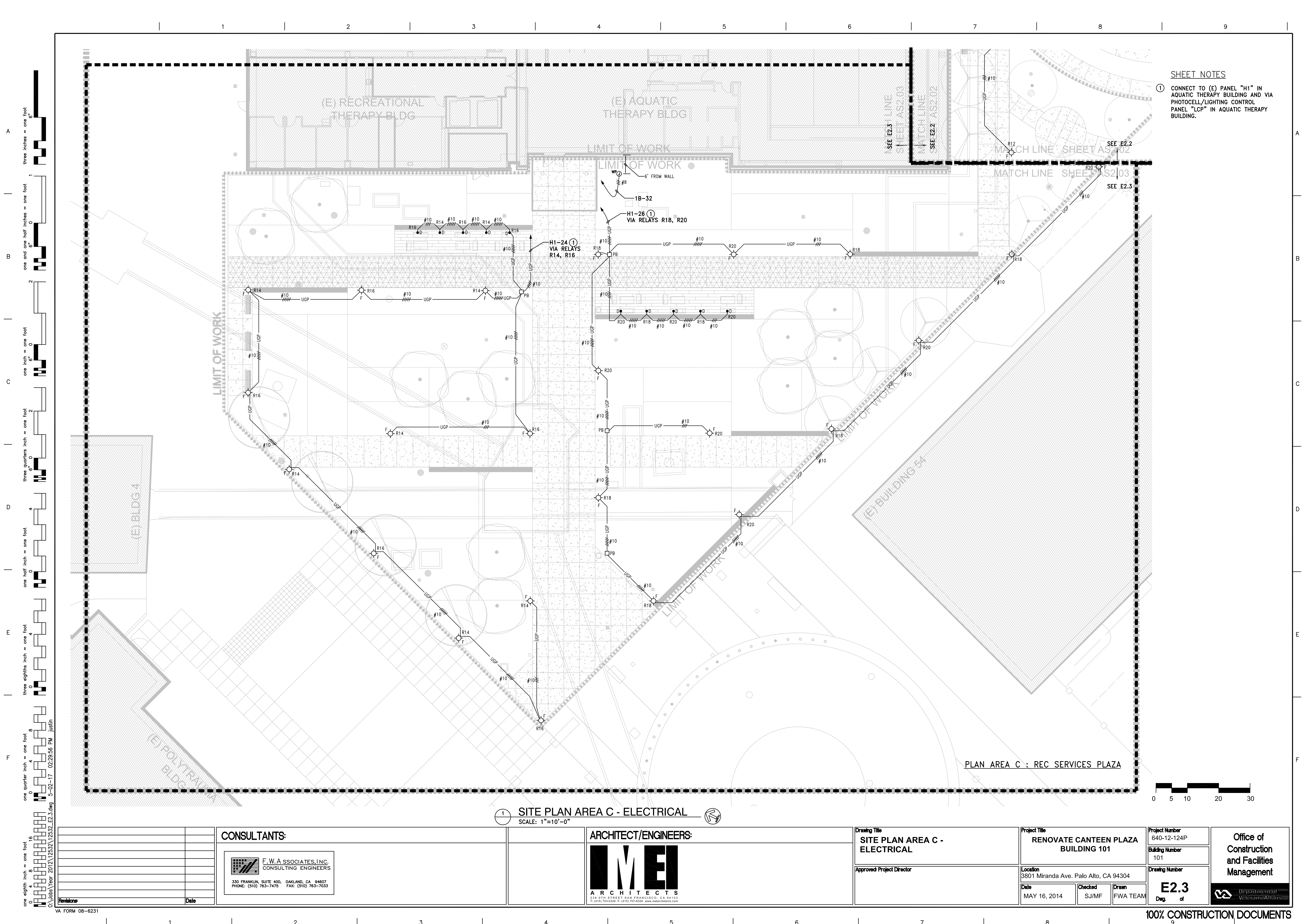


**MEI**  
ARCHITECTS

239 9TH STREET SAN FRANCISCO, CA 94113  
T: (415) 703-0326 F: (415) 707-6328 www.meiarchitects.com

<b>Drawing Title</b> <b>SITE PLAN AREA B - ELECTRICAL</b>		<b>Project Title</b> <b>RENOVATE CANTEEN PLAZA BUILDING 101</b>		<b>Project Number</b> 640-12-124P		<b>Office of Construction and Facilities Management</b>  
<b>Approved Project Director</b>		<b>Location</b> 3801 Miranda Ave. Palo Alto, CA 94304		<b>Building Number</b> 101		
				<b>Drawing Number</b>  <b>E2.2</b>  Dwg. of		
		<b>Date</b> MAY 16, 2014		<b>Checked</b> SJ/MF	<b>Drawn</b> FWA TEAM	





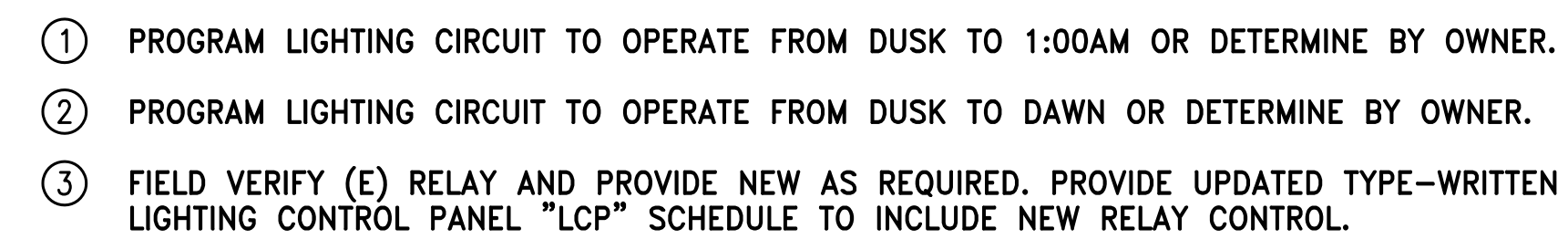




- ① VIA PHOTOCCELL AND LIGHTING CONTROL PANEL "LCP" IN AQUATIC THERAPY BUILDING ELECTRICAL ROOM
- ② CONTRACTOR SHALL VERIFY PANEL AND PROVIDE TYPED-WRITTEN UPDATED/CORRECTED PANEL DIRECTORIES WITHIN EACH PANEL.

③ CONTRACTOR SHALL VERIFY PANEL AND PROVIDE TYPED-WRITTEN UPDATED/CORRECTED PANEL DIRECTORIES WITHIN EACH PANEL.



VA FORM 08-6231