

Statement of Work

Title of Requirement

3-6-2017

A. GENERAL INFORMATION

1. Title of Project: **SPD Renovations (VA 528A8-08-847)**
2. Type of Contract Contemplated: *[Describe the contract type appropriate to the circumstances of the acquisition]*

B. SCOPE

Purchase and installation of (2) 733HCe and (1) 533HCe sterilizers.

C. REQUIREMENT/SALIENT CHARACTERISTICS/SPECIFICATIONS

Common Nomenclature (commercial description):

- 733: 26.5x36x61" Chamber
- 533: 21x21x38" Chamber
- chamber and jacket constructed of 316L stainless steel for corrosion resistance and structural integrity with a 15 year warranty
- Chamber interior polished to a high-luster finish to reduce build-up of steam-water deposits
- Power operated door slides to clear head ring, then swings open for complete access
- Water-Ejector Vacuum
- All cycles sequenced and monitored by PACS control system
- Double Power Doors
- NetCOM enabled Ethernet for T-DOC or Getinge Online
- Exports cycle records to USB storage device
- Remote location of all rear control towers for specific 733 HC sterilizers as drawn in the attached final construction design that has been awarded and construction is currently underway (see equipment list #A2). No other sterilizer beside the Getinge Brand will fit this area with the remotely located towers.
- Must have 23 steam cycles available
- Must be able to be 100% compatible with all load carts currently used in department. (if another brand is purchased, it would have to include it's own compatible 2 racks and 2 carts causing a significant increase in cost as well as taking up too much room in the department causing unsafe work issues)
- Must be compatible with clean steam using RO water (stainless steel piping to jacket/chamber).

Kind of material (i.e., type, grade, alternatives, etc.): stainless steel chamber; stainless steel internal piping.

Electrical Data (i.e., 110 v, 60 Hz, 3 Ph, etc.):

TABLE B: ELECTRICAL CONNECTIONS & UTILITIES
(Refer to note 7 on sheet 4)

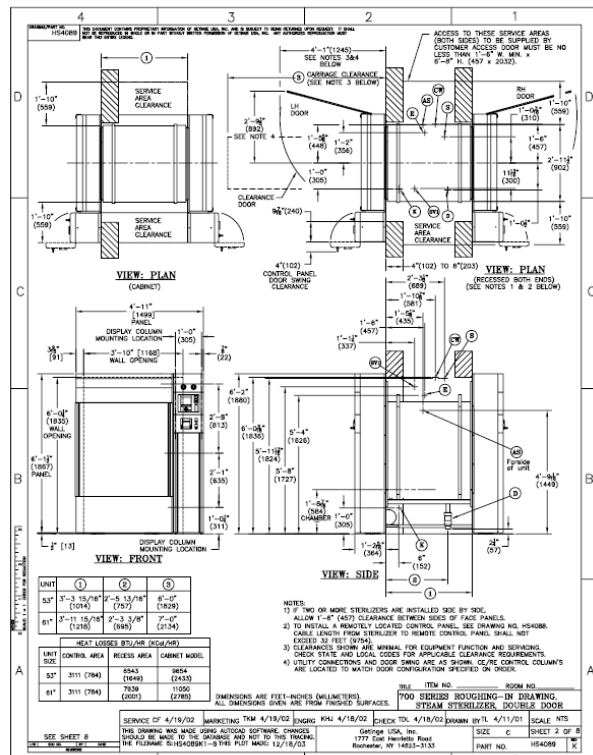
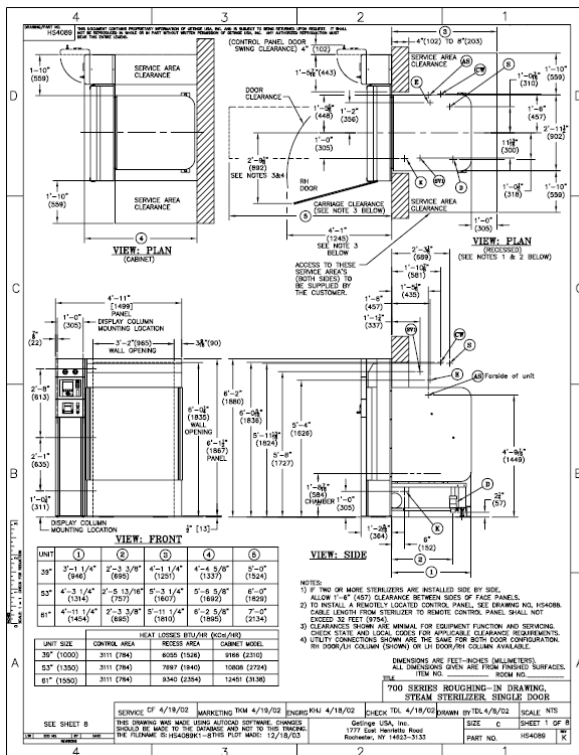
SERVICE	CONDUIT TRADE SIZE	UTILITY	MAX. CURRENT (AMPS)	BREAKER/FUSING RECOMMENDED	Consumption
E = Customer Interface Box (230V is optional)	1/2" (13)	115V~, 50/60 Hz, 1 Phase	12 A	15 A	7 W/Hr
	1/2" (13)	230V~, 50/60 Hz, 1 Phase	5 A		
K = JUNCTION BOX VACUUM PUMP UNITS (733LS) ONLY (OPTIONAL)	1/2" (13)	240V~, 60Hz, 3 Phase (4 wire w/ground)	7.8 A	10 A	N/A
		480V~, 60Hz, 3 Phase (4 wire w/ground)	3.9 A		

Plumbing Data:

TABLE A: PLUMBING CONNECTIONS & UTILITIES
(Refer to notes 1-6 on sheet 4)

ON UNIT CONNECTION	PIPE SIZE TO UNIT	PRESSURE RANGE DYNAMIC AT UNIT	FLOW RATE MAX
S= Steam 1" (25) NPT female see note 4	1 1/4" (32) NPT	50-70 psig (3.5-4.9 kg/cm ²)	300 lbs./Hr (136 kg/Hr)
CW= Cold water 1" (25) NPT female see note 1	1-1/4" (32) NPT	40-70 psig (2.8-4.9 kg/cm ²)	11 gpm (1.4 m ³ /Hr)
D= Drain 2" (51) ODT	See note 2	Not applicable	See note 2
SVI(Jacket) = Sterilizer vessel pressure relief valve vent 3/4" (19) NPT female	See note 4	Not applicable	See note 4
AS = Air Supply A dry filtered, oil-less compressed air supply connection is 1/2" NPT at location indicated. A compressor for this purpose is available from Getinge/Castle (p/n 61301601462) at extra cost. Air quality will be clean, dry instrument quality.	1/2" NPT	50 - 90 PSIG	1 SCFM

Dimensions, size, capacity:



Principles of operation: steam sterilization of compatible reusable medical equipment.

Restrictive environmental conditions:

TABLE C: OPERATING ENVIRONMENTAL CONDITIONS

TEMPERATURE	PRESSURE		RELATIVE HUMIDITY
10°C (50°F) to 40°C (104°F)	Atmospheric from 0–6500 ft. (2000m) (Special software needed for elevations over 6500ft. (2000m))		10 to 90% non-condensing
VOLTAGE FLUCTUATIONS (Main supply)	OVERVOLTAGE CATEGORY	POLLUTION DEGREE	
not to exceed $\pm 10\%$ of the nominal voltage	III	2	

Intended use: steam sterilization of compatible reusable medical equipment.

Equipment with which the item is used:

Yes, required to be 100% with all currently owned internal racks/transport carts and have the same controls as all other sterilizers in use in new department.

(N/A if not applicable): N/A

End item application:

Original equipment manufacturer part number: 733HCE & 533HCE

Other pertinent information that describes the item, material or service required:

D. OTHER UNIQUE REQUIREMENTS

Compatibility with Existing Equipment: Yes, required to be 100% with all currently owned internal racks/transport carts and have the same controls as all other sterilizers in use in new department.

Applicable DICOM compliance, Directives or IT Policies:

**Coordination with On-going Construction Project (provide the project number):
VA 528A8-08-847**

Warranty: as per quote/contract

Training: company supplied

Service and/or Maintenance: after initial warranty expires: Bio-Med involved in

securing PM contract after manufacturer one expires.

Safety/ISO/IT/BioMed/SPS & Other Departmental Compliance:

E. DELIVERY

This section should clearly state:

- What the Contractor must deliver. If different tasks have different delivery requirements, they must be clearly identified.
- When the Contractor must deliver. This may be stated using actual dates, days after contract award, or using some other method that clearly marks the required delivery date.
- Where the Contractor must deliver the service. This may be stated as a location, an organization, a person identified by position (e.g., Contracting Officer's Representative, a person identified by name or using some other description.)
- What documentation (if any) the Contractor must obtain from the Government to verify Government receipt of the delivery.
- Where inspection and acceptance will occur.
- Other items to consider: Include any associated review periods or incorporation of Government comments as applicable. Deliverables are different than task completion milestones. Milestones may not require a specific submittal. Include here the schedule for when final products such as data, reports or other items are required to be furnished to the primary requestor.

Example Deliverable Schedule

Deliverable	Description	Quantity/Media	Date Completed
	(2) 733HCE steam sterilizers	2; manuals;	As needed based on construction project
	(1) 533HCE steam sterilizer	1; manuals;	

F. Government-Furnished Property, Material, Equipment, or Information (GFP, GFM, GFE, or GFI)

G. SECURITY

This section should identify any unique security requirements associated with contract performance (when applicable). These requirements may include, but are not limited to, such items as: Temporary VA Contractor ID will be required

- Special pass or identification requirements;
- Special security clearance requirements; or
- Special escort requirements.

H. SPECIAL MATERIAL REQUIREMENT

Describe requirements for any special materials that are to be encountered in the performance of the service(s).

I. PLACE OF PERFORMANCE

Albany VA Medical Center, 113 Holland Ave, Albany NY 12208. Location of SPD new department location, basement D wing.

J. PERIOD OF PERFORMANCE

K. BILLING/INVOICING

L. CUSTOMER INFORMATION

M. DRAWINGS/ASBUILTS/CONSTRUCTION FLOOR PLANS (N/A or See Attachment __)

