



1 THE CONTRACTOR SHALL DEMOLISH ALL EXISTING FIRE ALARM DEVICES WITHIN THIS AREA IN THEIR ENTIRETY TO MAKE WAY FOR NEW FIRE ALARM SCOPE AS INDICATED.



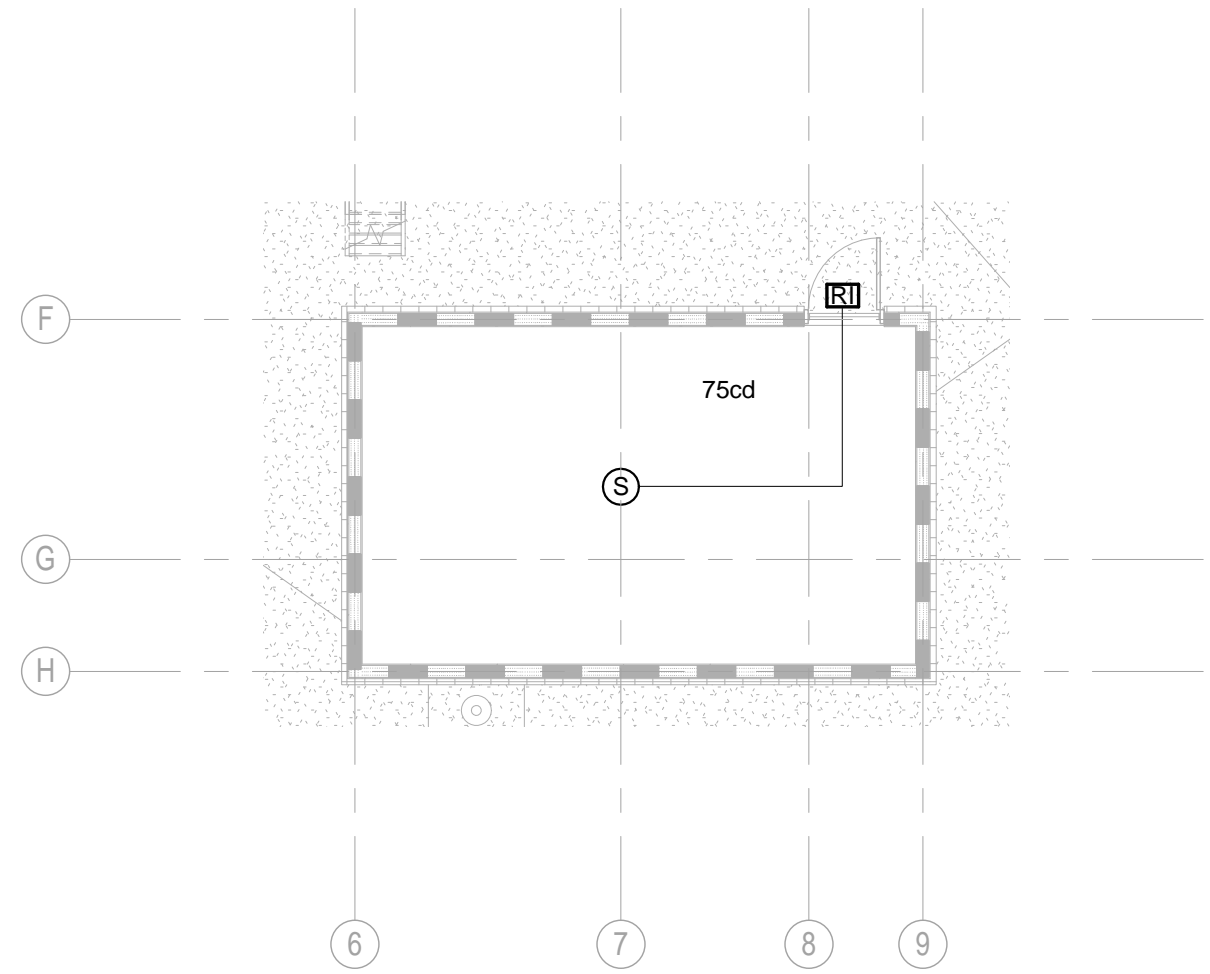
		<b>CONSULTANTS:</b>				<b>ARCHITECT/ENGINEERS:</b>		Drawing Title <b>FIRE ALARM LEVEL 1 PLAN</b>		Project Title <b>BUILDING 3 MRI/CT Radiology Addition Boston Healthcare System - Brockton Campus</b>		Project Number <b>523-398</b>		<b>Office of Facilities Management</b>					
		 <b>R. W. Sullivan Engineering</b> <small>MEP / IT Engineering, Code Consulting The South Center, 500 Mass. St., Suite 203 Boston, Massachusetts 02111 Phone: (617) 524-5227    <a href="http://www.rwsen.com">www.rwsen.com</a> RWS, JOB# 11975.00</small>				<b>moser pilon nelson architects</b>  <small>30 - JORDAN LANE WILMINGTON, MA 01897 (978) 563-8164</small>		Approved: Project Director		Location <b>940 Belmont Street Brockton, MA 02301</b>		Building Number <b>3</b>							
1 - 100% CONSTRUCTION DOCUMENT SUBMISSION		04/08/2016								Drawing Number <b>FA1.00</b>		Dwg. 113 of 145		 <b>Department of Veterans Affairs</b>					
Revisions:		Date:								<table><tr><th>Date</th><th>Checked</th><th>Drawn</th></tr><tr><td>02/12/2016</td><td>AR</td><td>AR</td></tr></table>		Date	Checked			Drawn	02/12/2016	AR	AR
Date	Checked	Drawn																	
02/12/2016	AR	AR																	



one eighth inch = one foot  
one quarter inch = one foot  
one half inch = one foot  
three quarters inch = one foot  
one inch = one foot  
one and one half inches = one foot  
two inches = one foot  
three inches = one foot



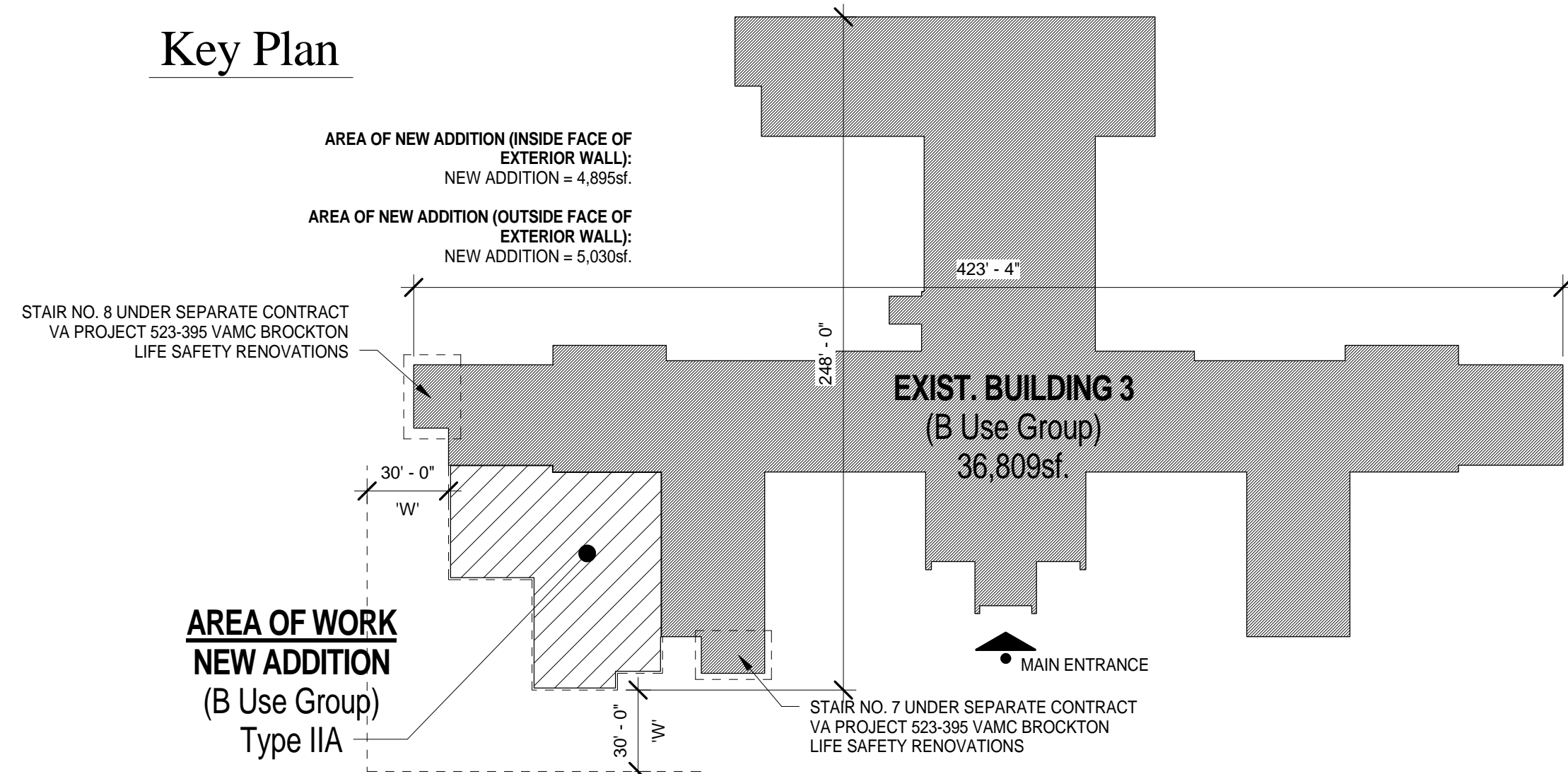
## FIRE ALARM LEVEL 2 PLAN



## FIRE ALARM PENTHOUSE PART PLAN

- FIRE ALARM PLAN TAGGED NOTES:**
- THE CONTRACTOR SHALL DEMOLISH ALL EXISTING FIRE ALARM DEVICES WITHIN THIS AREA IN THEIR ENTIRETY TO MAKE WAY FOR NEW FIRE ALARM SCOPE AS INDICATED.
  - AS PART OF DEDUCT ALTERNATE NO. 4 THE CONTRACTOR SHALL OMIT ALL FIRE ALARM DEVICES INDICATED ON THIS LEVEL AND INSTALL ONLY THE FOLLOWING:
    - HEAT DETECTORS SHALL BE INSTALLED ON A 25' X 25' GRID WITHIN THE SHELL SPACE.
    - SPEAKER STROBE DEVICES SHALL BE INSTALLED 30'-0" ON CENTER AROUND THE PERIMETER OF THE SHELL SPACE.

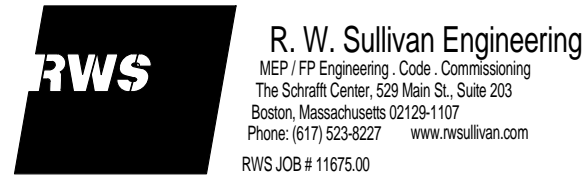
## Key Plan



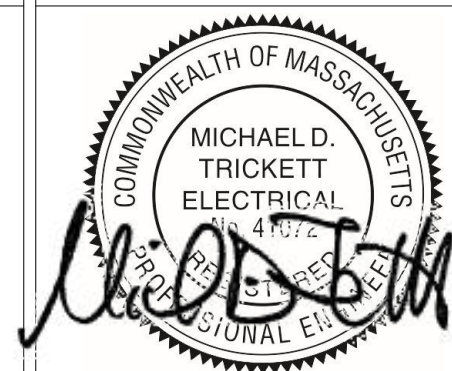
## 100% CONSTRUCTION DOCUMENT SUBMISSION "FULLY SPRINKLERED"

1 - 100% CONSTRUCTION DOCUMENT SUBMISSION	04/08/2016
Revisions:	Date:

### CONSULTANTS:



R. W. Sullivan Engineering  
MEP / FF Engineering, Cook Consulting  
The South Center, 525 Main St., Suite 203  
Boston, Massachusetts 02129-1157  
Phone: 617-524-8227 www.rwsusa.com  
RWS, DB # 11675.00



### ARCHITECT/ENGINEERS:

moser  
pilon  
nelson  
architects

30 JORDAN LANE  
WILMINGTON, CT 06019  
(860) 263-6164

Drawing Title

FIRE ALARM LEVEL 2 PLAN

Approved: Project Director

Project Title

BUILDING 3  
MRI/CT Radiology Addition  
Boston Healthcare System - Brockton Campus

Location

940 Belmont Street Brockton, MA 02301

Date

02/12/2016

Checked

AR

Drawn

AR

Project Number

523-398

Building Number

3

Drawing Number

FA1.01

Dwg. 114 of 145

Office of  
Facilities  
Management

Department of  
Veterans Affairs