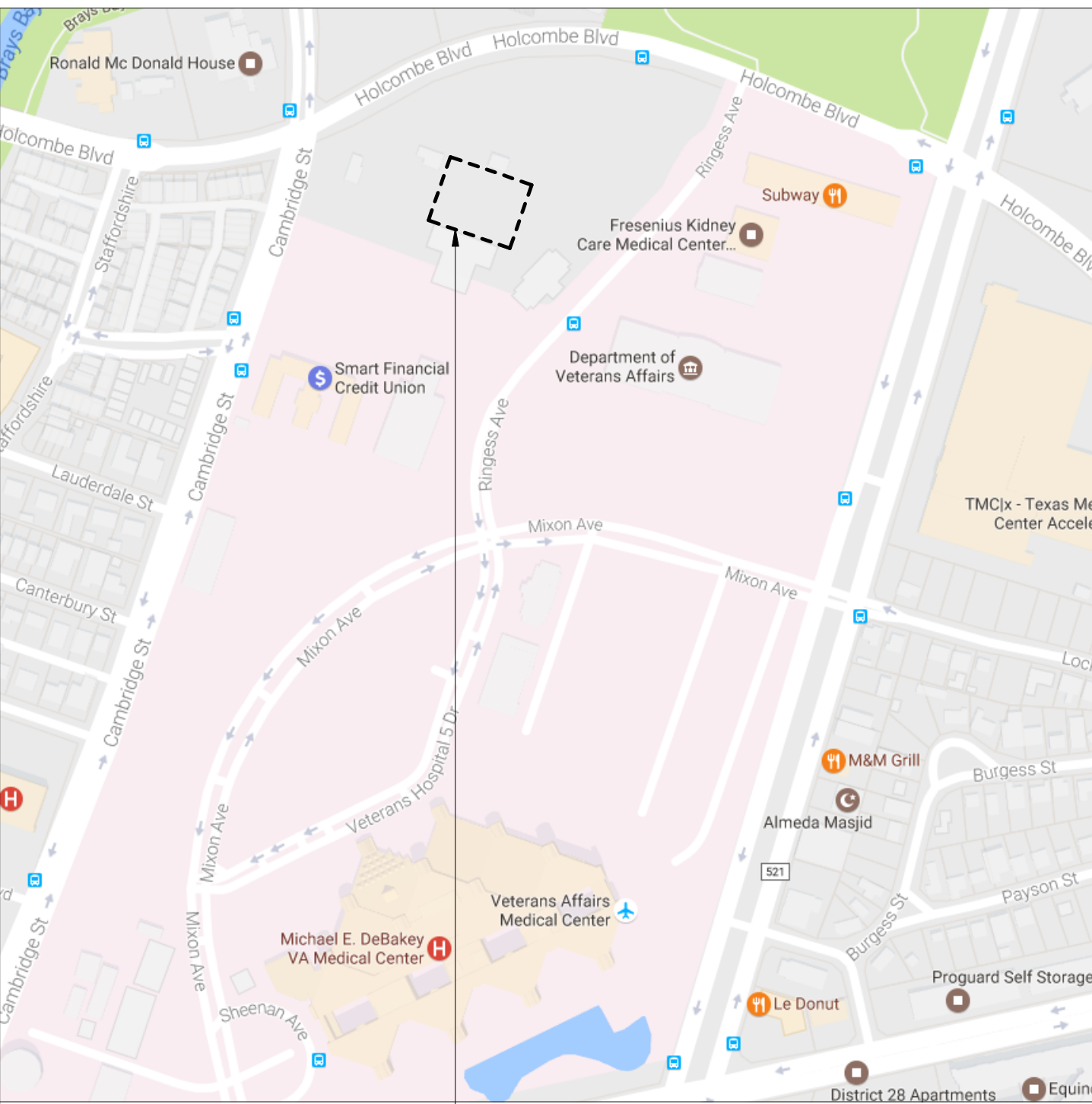


MICHAEL E. DEBAKEY VA MEDICAL CENTER

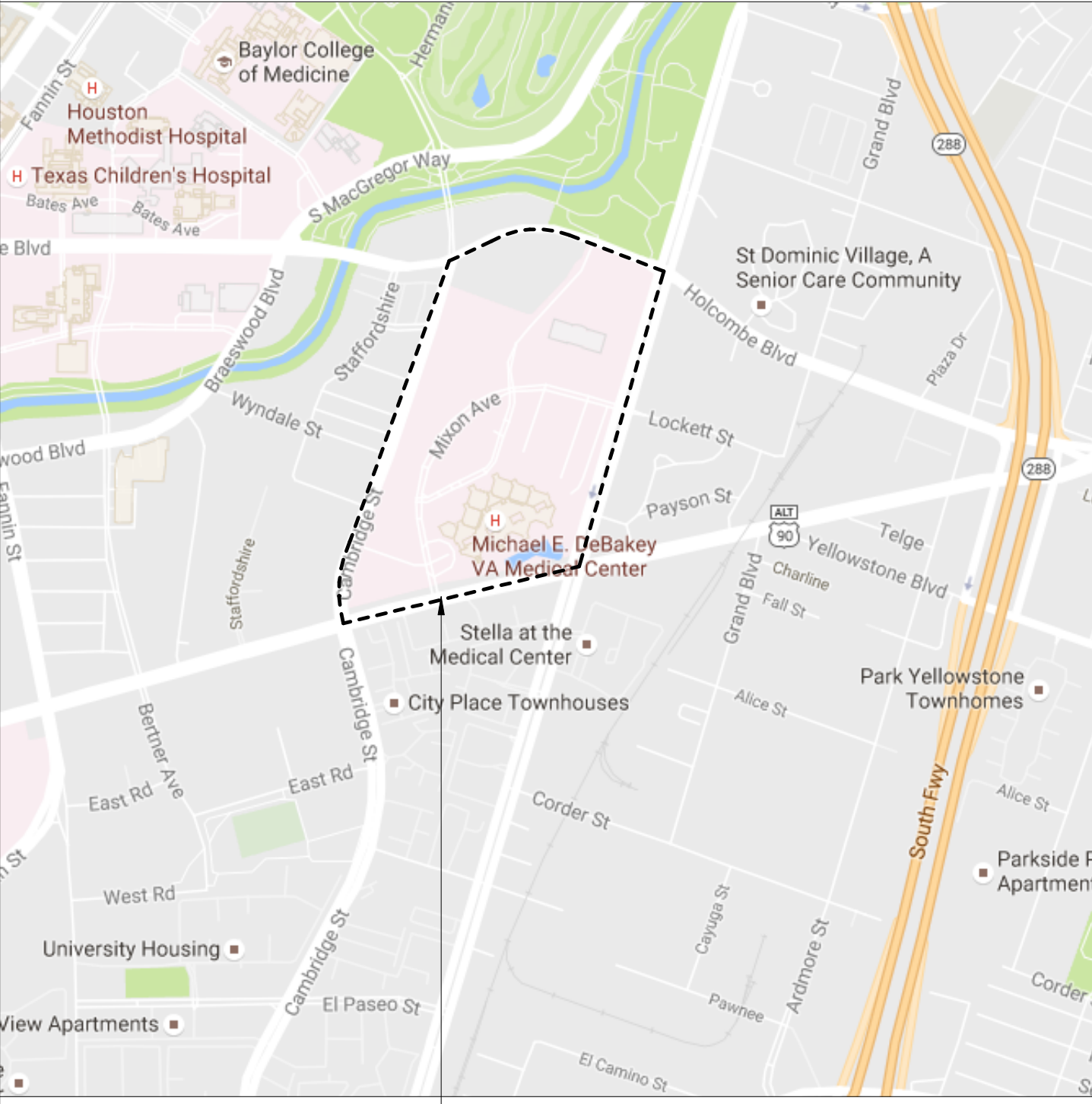
2002 HOLCOMBE BOULEVARD
HOUSTON, TX 77030

BID DOCUMENTS

NEW ADMINISTRATION BUILDING



AREA OF WORK



LOCATION MAP

Sheet List		
SHEET SEQUENCE	SHEET NUMBER	SHEET NAME

[01] GENERAL		
1	GI-000	COVER SHEET
2	GI-001	GENERAL INFORMATION
3	GI-011	LIFE SAFETY PLANS
4	GI-100	SITE PLAN
5	GI-200	VERTICAL & HORIZONTAL ASSEMBLIES

[02] CIVIL		
6	CS-001	TOPOGRAPHIC SURVEY
7	CS-002	TOPOGRAPHIC SURVEY
8	CS-003	TOPOGRAPHIC SURVEY
9	CS-004	FEMA FIRM MAP
10	CS-100	OVERALL SITE PLAN
11	CS-101	DEMOLITION PLAN
12	CS-102	SITE LAYOUT PLAN
13	CS-103	SITE GRADING PLAN
14	CS-104	DRAINAGE AREA MAP
15	CS-105	STORM WATER POLLUTION PREVENTION PLAN
16	CS-200	PAVING DETAILS
17	CS-201	PAVING DETAILS
18	CS-202	STORM WATER POLLUTION PREVENTION PLAN DETAILS
19	CU-100	SITE UTILITY PLAN
20	CU-200	UTILITY DETAILS

[03] STRUCTURAL		
21	SS-000	3D VIEWS
22	SS-001	STRUCTURAL GENERAL NOTES
23	SS-030	TYPICAL DETAILS - CONCRETE
24	SS-040	TYPICAL DETAILS - STEEL
25	SS-100	FOUNDATION PLAN
26	SS-101	SECOND LEVEL FRAMING PLAN
27	SS-102	ROOF FRAMING PLAN
28	SS-103	TILT-UP PANEL PLAN
29	SS-200	TYPICAL DETAILS - CONCRETE
30	SS-201	TILT-UP ELEVATIONS
31	SS-202	TILT-UP ELEVATIONS
32	SS-300	FOUNDATION DETAILS
33	SS-301	FOUNDATION DETAILS
34	SS-400	FLOOR FRAMING DETAILS
35	SS-401	FLOOR FRAMING DETAILS
36	SS-500	ROOF FRAMING DETAILS

Sheet List		
SHEET SEQUENCE	SHEET NUMBER	SHEET NAME

[04] ARCHITECTURAL		
37	AS-101	ARCHITECTURAL FLOOR PLANS
38	AS-102	DIMENSION PLANS
39	AS-103	BID DEDUCT ALTERNATE PLANS
40	AS-200	REFLECTED CEILING PLANS
41	AS-201	BID DEDUCT ALTERNATE RCPS
42	AS-300	EXTERIOR ELEVATIONS
43	AS-301	ENLARGED EXT. ELEV. & DETAILS
44	AS-310	WALL SECTIONS
45	AS-400	BUILDING SECTIONS
46	AS-500	ROOF PLAN
47	AS-510	PLAN DETAILS
48	AS-511	SECTION DETAILS
49	AS-512	ROOF DETAILS
50	AS-600	ENLARGED PLANS & INTERIOR ELEVATIONS
51	AS-601	ENLARGED PLANS & INTERIOR ELEVATIONS
52	AS-602	FURNITURE & EQUIPMENT PLANS
53	AS-700	MILLWORK SECTIONS
54	AS-701	VERTICAL CIRCULATION ENLARGED PLANS & SECTIONS
55	AS-702	VERTICAL CIRCULATION DETAILS
56	AS-800	DOOR & WINDOW SCHEDULES
57	AS-900	FLOOR FINISH PLANS & MATERIAL LEGENDS
58	AS-901	SIGNAGE PLANS

[05] FIRE PROTECTION		
59	FA-101	FIRE ALARM - FLOOR PLAN & RISER DIAGRAM
60	FP-001	FIRE ALARM & SUPPRESSION SYMBOLS & ABBREVIATIONS LEGEND
61	FP-101	FIRE PROTECTION - FLOOR PLAN & RISER DIAGRAM
62	FP-401	FIRE PROTECTION DETAILS

[06] PLUMBING		
63	P-000	PLUMBING LEGEND
64	PL-101	PLUMBING WASTE FLOOR PLANS
65	PP-101	PLUMBING SUPPLY FLOOR PLANS
66	P-301	PLUMBING RISER DIAGRAMS
67	P-501	PLUMBING DETAILS
68	P-502	PLUMBING DETAILS
69	P-601	PLUMBING SCHEDULES
70	P-602	PLUMBING SCHEDULES

Sheet List		
SHEET SEQUENCE	SHEET NUMBER	SHEET NAME

[07] MECHANICAL		
71	M-000	MECHANICAL LEGEND
72	M-101	MECHANICAL FLOOR PLANS
73	M-301	MECHANICAL BUILDING SECTIONS
74	M-501	MECHANICAL DETAILS
75	M-601	MECHANICAL SCHEDULES
76	M-602	MECHANICAL SCHEDULES
77	M-701	MECHANICAL INSTRUMENTATION - CONTROLS
78	M-702	MECHANICAL INSTRUMENTATION - CONTROLS
79	M-703	MECHANICAL INSTRUMENTATION - CONTROLS
80	M-704	MECHANICAL INSTRUMENTATION - CONTROLS

[08] ELECTRICAL		
81	E-000	ELECTRICAL LEGEND
82	ES-101	ELECTRICAL SITE PLAN
83	EL-101	ELECTRICAL LIGHTING FLOOR PLANS
84	EP-101	ELECTRICAL POWER FLOOR PLANS
85	E-501	ELECTRICAL DETAILS
86	E-502	ELECTRICAL DETAILS
87	E-601	ELECTRICAL ONE-LINE DIAGRAMS
88	E-602	ELECTRICAL SCHEDULES
89	E-603	ELECTRICAL SCHEDULES
90	E-701	LIGHTING CONTROL DIAGRAMS
91	E-702	LIGHTING CONTROL DIAGRAMS

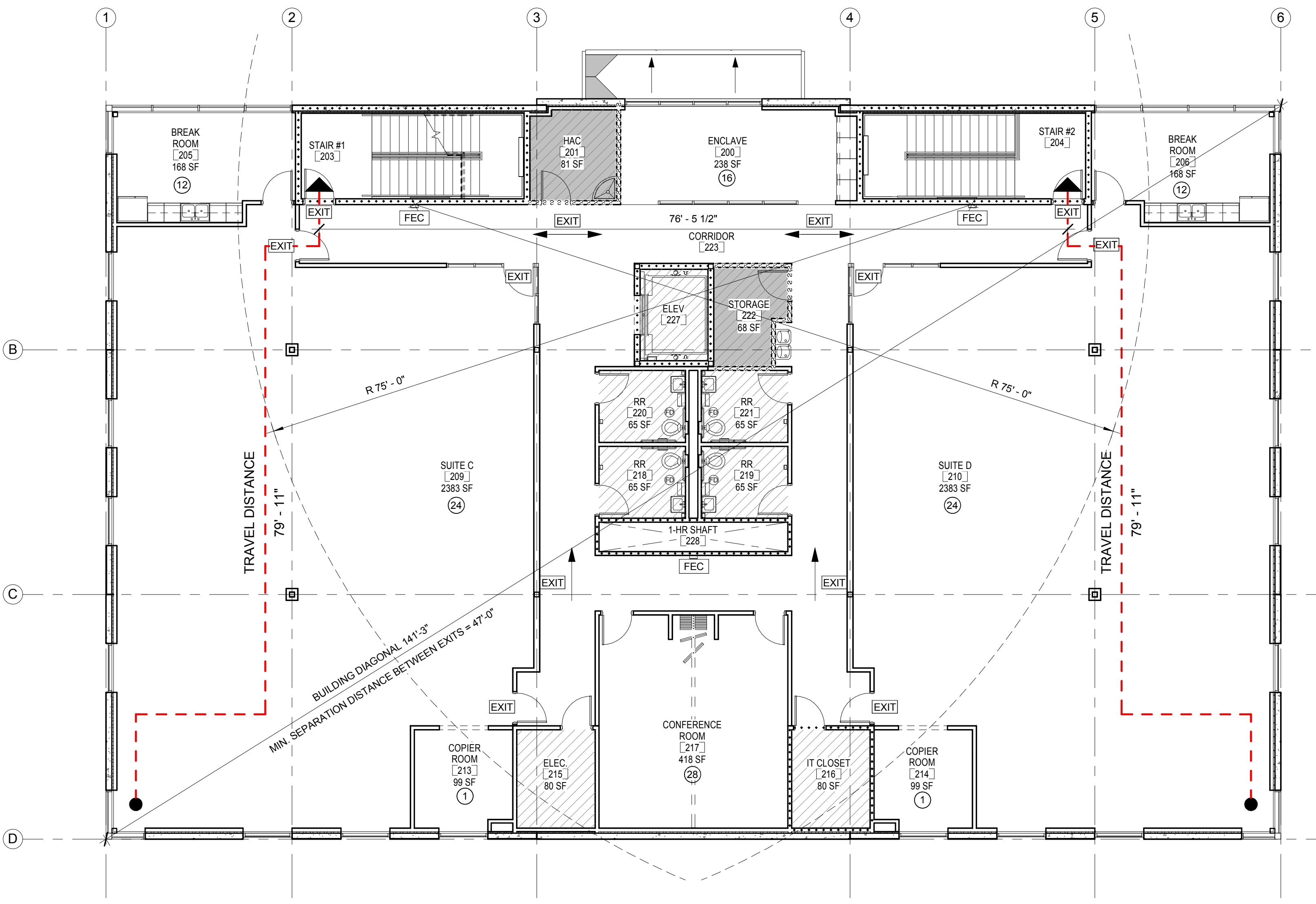
[09] TELECOM		
92	TS-001	TELECOM GENERAL NOTES AND LEGENDS
93	TS-101	TELECOM FLOOR PLANS
94	TS-401	TELECOM ENLARGED PLANS
95	TS-501	TELECOM RACK RISER DIAGRAMS

TOTAL SHEET COUNT: 95

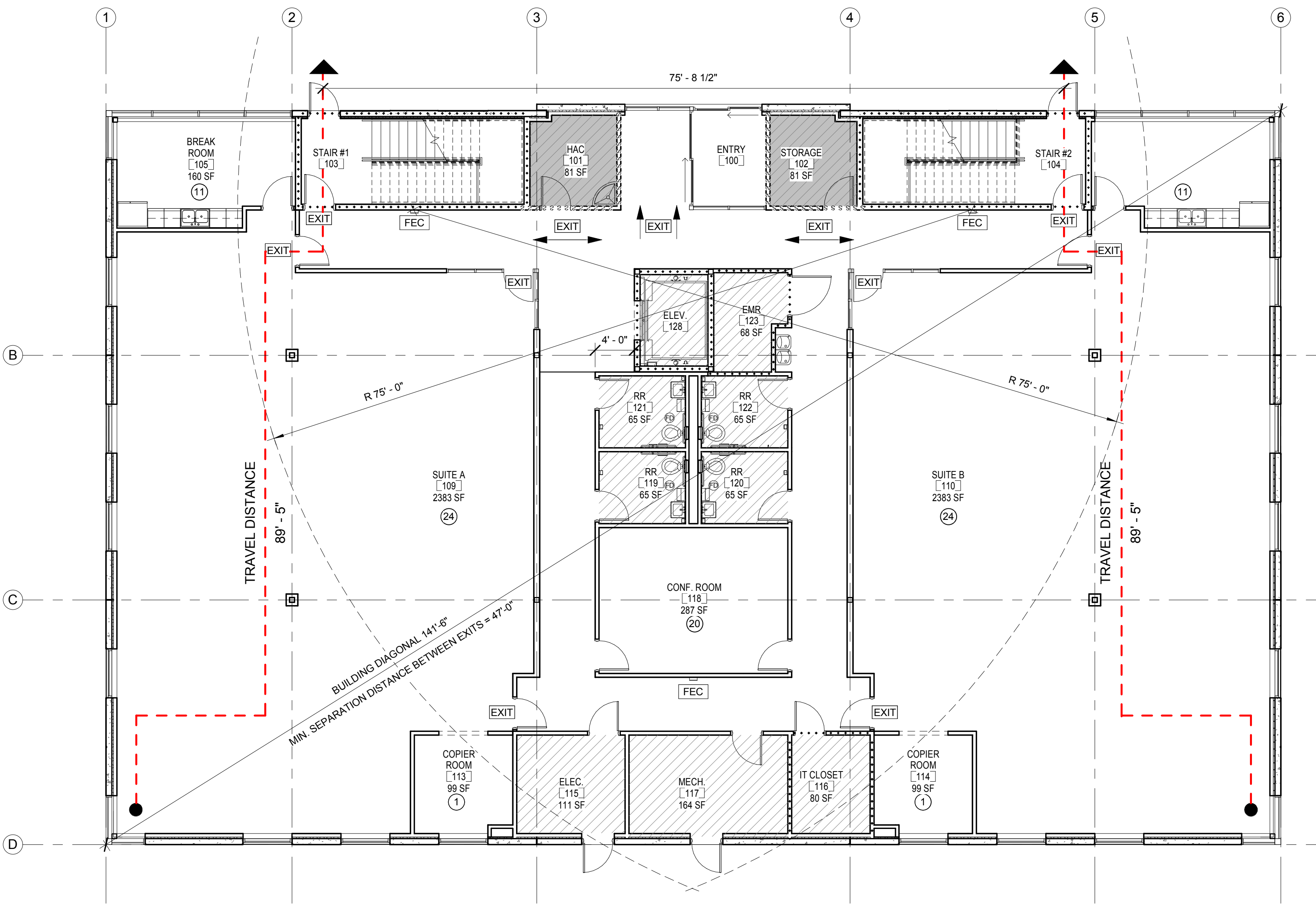
BID INFORMATION

CONSULTANTS			ARCHITECT & M.E.P. ENGINEER		APPROVED: DIRECTOR	SHEET TITLE COVER SHEET		PROJECT TITLE NEW ADMINISTRATION BUILDING		VA PROJECT NUMBER 580-CSI-110	Office of Construction and Facilities Management VA U.S. Department of Veterans Affairs
STRUCTURAL / CIVIL ENGINEER			FIRE PROTECTION / TELECOM ENGINEER		APPROVED: ASSOCIATE DIRECTOR			PROJECT LOCATION 2002 HOLCOMBE BOULEVARD HOUSTON, TX 77030		BUILDING NUMBER	
H2B, INC. 1225 N. LOOP WEST, SUITE 900 HOUSTON, TX 77008 (713) 864-2900			PAGE 400 W. CESAR CHAVEZ STREET, SUITE 500 AUSTIN, TX 78701 (512) 472-6721		APPROVED: ASSISTANT DIRECTOR	APPROVED: CHIEF ENGINEER		DATE 06-27-17		DRAWN MEB	
Revision #			Date		APPROVED: CHIEF ENGINEER			CHECKED SAC		Dwg. 1 OF 95	

three inches = one foot
one and one-half inches = one foot
one inch = one foot
three-quarters inch = one foot
one-half inch = one foot
three-eighths inch = one foot
one-quarter inch = one foot
one-eighth inch = one foot



2 LIFE SAFETY PLAN - SECOND LEVEL
1/8" = 1'-0" F.F.E = 59' - 0"



1 LIFE SAFETY PLAN - GROUND LEVEL
1/8" = 1'-0" F.F.E = 45' - 0"

IBC 2012

BUILDING HEIGHT: 2 STORIES, 34'-0" HEIGHT
BUILDING AREA: FIRST FLOOR 9,020 SF
SECOND FLOOR 8,891 SF
TOTAL 17,910 SF

SPRINKLER SYSTEM: BUILDING IS FULLY SPRINKLERED IN ACCORDANCE WITH NFPA 13

OCCUPANCY CLASSIFICATION: B (BUSINESS) (NFPA 101 - CH. 38) (IBC SECTION 304)

OCCUPANT LOAD
FIRST FLOOR: 92 OCC.
SECOND FLOOR: 118 OCC.
TOTAL OCCUPANT LOAD: 210 OCC.

OCCUPANT LOADS (NFPA 101: TABLE 7.3.1.2) (IBC TABLE 1004.1.2):
FIRST FLOOR BUSINESS USE = 100 SF/PERSON
SECOND FLOOR BUSINESS USE = 100 SF/PERSON
FIRST FLOOR ASSEMBLY AREAS WITHOUT FIXED SEATING (UNCONCENTRATED) = 15 SF/PERSON
SECOND FLOOR ASSEMBLY AREAS WITHOUT FIXED SEATING (UNCONCENTRATED) = 15 SF/PERSON

CONSTRUCTION TYPE: TYPE II(000) TYPE IIB (IBC 602.2)

MAX ALLOWABLE FLOOR AREA/FLOOR: 23,000 S.F. (IBC TABLE 503)
ACTUAL NUMBER OF FLOORS: 2

OVERALL DIAGONAL OF FIRST FLOOR: 141'-6"
OVERALL DIAGONAL OF SECOND FLOOR: 141'-3"

MIN. SEPARATION BETWEEN EXITS (1/3 OF OVERALL DIAGONAL): 47'-0"

ACTUAL SEPARATION BETWEEN FIRST FLOOR EXITS: 76'-5"
ACTUAL SEPARATION BETWEEN SECOND FLOOR EXITS: 79'-8"

NUMBER OF EXITS REQUIRED ON FIRST FLOOR: 2 (NFPA 101: 38.2.4.1)
NUMBER OF EXITS REQUIRED ON SECOND FLOOR: 2 (NFPA 101: 38.2.4.1)

NUMBER OF EXITS PROVIDED ON FIRST FLOOR: 5
NUMBER OF EXITS PROVIDED ON SECOND FLOOR: 2

FIRE RESISTANCE RATINGS: (IBC TABLE 601)
COLUMNS: 0 HR
BEAM, GIRDERS, TRUSSES: 0 HR
FLOOR/CEILING ASSEMBLIES: 0 HR
ROOF/CEILING ASSEMBLIES: 0 HR
EXTERIOR NON-BEARING WALLS: 0 HR
INTERIOR NON-BEARING WALLS: 0 HR

ROOF FIRE CLASSIFICATION: CLASS C (IBC TABLE 1505.1)

INTERIOR ENVIRONMENT: (NFPA 101: 38.3.3) (IBC TABLE 803.9)
EXIT ENCLOSURES & PASSAGEWAYS: CLASS B
CORRIDORS: CLASS B
ROOMS & ENCLOSED SPACES: CLASS C

FIRE-RESISTIVE REQUIREMENTS: (602.3)
NON COMBUSTIBLE MATERIALS FOR STRUCTURAL FRAME, FLOORS, ROOF DECK, EXTERIOR NON-BEARING WALLS, INTERIOR NON-BEARING WALLS (U.N.O. AT EXTERIOR)

SHAFTS MINIMUM 1-HOUR RATING (NFPA 101: 7.1.3.2.1) (IBC TABLE 713.4)
INTERIOR EXIT STAIRWAYS MINIMUM 1-HOUR RATING (NFPA 101: 7.1.3.2.1) (IBC TABLE 713.4)

DEAD END CORRIDOR MAXIMUM DISTANCE: 50' (NFPA 101: 38.2.5.2.1) (IBC 1018.4 Exception #2)
MAXIMUM COMMON PATH OF TRAVEL: 100' (NFPA 101: 38.2.5.3.1) (IBC TABLE 1014.3)
MAXIMUM TRAVEL DISTANCE: 300' (NFPA 101: 38.2.6.1) (IBC TABLE 1016.2)
CORRIDOR MINIMUM FIRE RATING: 0 HR (NFPA 101: 38.3.6.1) (IBC TABLE 1018.1)

ALL EXIT DOORS PROVIDED ARE 36" LEAF MINIMUM YIELDING 34" CLEAR EXIT WIDTH
207/PERSON (NFPA 101: TABLE 7.3.3.3.1) ALLOWS 170 OCCUPANT LOAD PER DOOR MAX.

STAIR WIDTH PROVIDED IS 48" CLEAR AT STAIR 1 (WEST) AND 48" CLEAR AT STAIR 2 (EAST)
3"/PERSON (NFPA 101: TABLE 7.3.3.1) ALLOWS 160 OCCUPANT LOAD AT STAIR 1 MAX.
3"/PERSON (NFPA 101: TABLE 7.3.3.1) ALLOWS 160 OCCUPANT LOAD AT STAIR 2 MAX.

PLUMBING FIXTURE CALCULATIONS (IBC TABLE 2902.1):
WATER CLOSETS: 1 PER 25 FOR THE FIRST 50 AND 1 PER 50 FOR THE REMAINDER EXCEEDING 50.
(5 REQUIRED) 4 PER EACH SEX.
LAVATORIES: 1 PER 40 FOR THE FIRST 80 AND 1 PER 80 FOR THE REMAINDER EXCEEDING 80.
(5 REQUIRED) 3 PER EACH SEX.
DRINKING FOUNTAINS: 1 PER 100 (3 REQUIRED)
SERVICE SINK: 1 REQUIRED

TOTAL OCCUPANT LOAD: 210
8 WATER CLOSETS PROVIDED
8 LAVATORIES PROVIDED
4 DRINKING FOUNTAINS PROVIDED
2 SERVICE SINKS PROVIDED

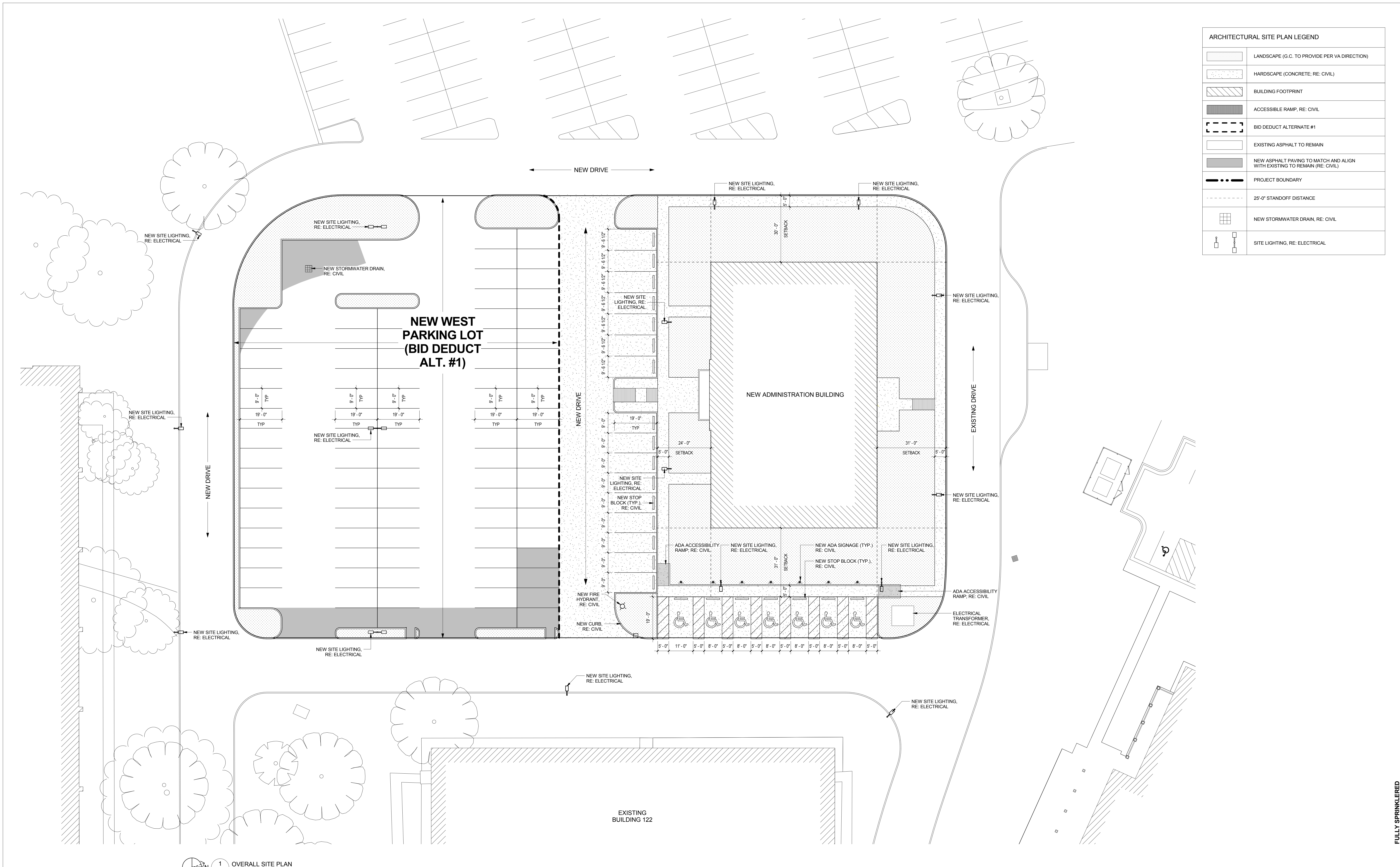
- LIFE SAFETY LEGEND**
- 1 OCCUPANT LOAD
 - FEC FIRE EXTINGUISHER CABINET
 - EXIT EXIT SIGNAGE (NFPA 101: 38.2.10)
 - SPACE NOT OCCUPIED
 - PROTECTED AREA ENCLOSED WITH SMOKE PARTITIONS
 - BUILDING EXIT
 - EGRESS PATH OF TRAVEL AND DISTANCE (MAX TRAVEL DISTANCE = 100'-0" (TABLE 1021.2(2) NOTE B)
 - FIRE EXTINGUISHER MAX 75' TRAVEL DISTANCE
 - FIRE RATED WALL SYMBOLS:
 - 1 HOUR FIRE PARTITION
 - S.S.S.S SMOKE PARTITION

CONSULTANTS		ARCHITECT & M.E.P. ENGINEER		APPROVED: DIRECTOR	SHEET TITLE LIFE SAFETY PLANS	PROJECT TITLE NEW ADMINISTRATION BUILDING	VA PROJECT NUMBER 580-CSI-110	Office of Construction and Facilities Management VA U.S. Department of Veterans Affairs	
STRUCTURAL / CIVIL ENGINEER H2B, INC. 1225 N. LOOP WEST, SUITE 900 HOUSTON, TX 77008 (713) 864-2300		FIRE PROTECTION / TELECOM ENGINEER PAGE 400 W. CESAR CHAVEZ STREET, SUITE 500 AUSTIN, TX 78701 (512) 472-6721		APPROVED: ASSOCIATE DIRECTOR		PROJECT LOCATION 2002 HOLCOMBE BOULEVARD HOUSTON, TX 77030	BUILDING NUMBER		
Revision #		Date		APPROVED: ASSISTANT DIRECTOR		APPROVED: CHIEF ENGINEER	DRAWING NUMBER GI-011		Dwg 3 OF 95
				APPROVED: CHIEF ENGINEER			DATE 06-27-17		CHECKED SAC


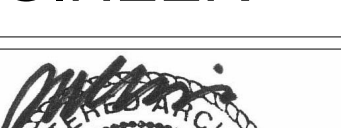
VA FORM 08-6231

FULLY SPRINKLERED

ARCHITECTURAL SITE PLAN LEGEND	
	LANDSCAPE (G.C. TO PROVIDE PER VA DIRECTION)
	HARDSCAPE (CONCRETE; RE: CIVIL)
	BUILDING FOOTPRINT
	ACCESSIBLE RAMP; RE: CIVIL
	BID DEDUCT ALTERNATE #1
	EXISTING ASPHALT TO REMAIN
	NEW ASPHALT PAVING TO MATCH AND ALIGN WITH EXISTING TO REMAIN (RE: CIVIL)
	PROJECT BOUNDARY
	25'-0" STANDOFF DISTANCE
	NEW STORMWATER DRAIN; RE: CIVIL
	SITE LIGHTING; RE: ELECTRICAL

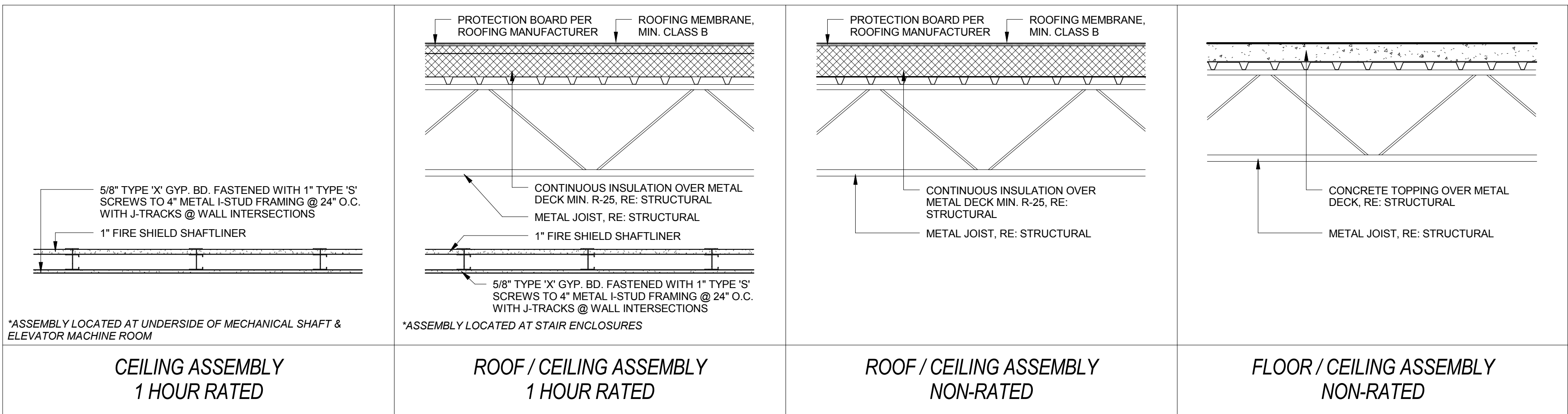


1 OVERALL SITE PLAN
1/16" = 1'-0" F.F.E = 45' - 0"

		CONSULTANTS		ARCHITECT & M.E.P. ENGINEER		APPROVED: DIRECTOR		SHEET TITLE SITE PLAN		PROJECT TITLE NEW ADMINISTRATION BUILDING		VA PROJECT NUMBER 580-CSI-110		<div>Office of Construction and Facilities Management</div> <div>VAU.S. Department of Veterans Affairs</div>					
		STRUCTURAL / CIVIL ENGINEER H2B, INC. 1225 N. LOOP WEST, SUITE 900 HOUSTON, TX 77008 (713) 864-2900		FIRE PROTECTION / TELECOM ENGINEER PAGE 400 W. CESAR CHAVEZ STREET, SUITE 500 AUSTIN, TX 78701 (512) 472-6721		<div> 100 NEW YORK ST. SUITE A HOUSTON, TX 77002 spur-design.com</div> <div> TX ARCH REGISTRATION NO. BR 2171 TX ENGR REGISTRATION NO. F-17591</div>				PROJECT LOCATION 2002 HOLCOMBE BOULEVARD HOUSTON, TX 77030		BUILDING NUMBER				DRAWING NUMBER GI-100			
		Revision #		Date		APPROVED: ASSOCIATE DIRECTOR		APPROVED: ASSISTANT DIRECTOR		APPROVED: CHIEF ENGINEER		DATE 06-27-17				CHECKED SAC		DRAWN MEB	
						APPROVED: CHIEF ENGINEER		APPROVED: CHIEF ENGINEER										Dwg. 4 OF 95	

GENERAL NOTES:

1. REFER TO PLANS FOR LOCATIONS OF EACH PARTITION.
2. PAINT CONTINUOUS 4" TALL, STENCILED LETTERS, ABOVE CEILING, ON BOTH SIDES OF ALL FIRE AND SMOKE WALLS DESIGNATING THE PARTITION RATING INDICATED ON THE LIFE SAFETY PLAN.
3. REFER TO FINISH SCHEDULE AND INTERIOR ELEVATIONS FOR LOCATIONS OF ALL WALL TILE. PROVIDE AND INSTALL CEMENTITIOUS BACKER BOARD IN LIEU OF GWB AT ALL SCHEDULED TILE LOCATIONS. UNLESS NOTED OTHERWISE, TILE SHALL BE INSTALLED PER TILE COUNCIL OF AMERICA LATEST STANDARDS FOR EACH TYPE OF BACKING MATERIAL REPRESENTED IN WALL/PARTITION.
4. ALL SUSPENDED WALLS AND PARTITIONS SHALL HAVE GWB WHICH EXTENDS A MINIMUM OF 6" ABOVE THE SUSPENDED CEILING UNLESS SHOWN AND/OR NOTED OTHERWISE BY THE ARCHITECT.
5. REFER TO STRUCTURAL DRAWINGS FOR ALL LOAD BEARING WALL CONDITIONS IN REGARDS TO STRUCTURAL REQUIREMENTS.
6. "ALIGN" MEANS SIMILAR COMPONENTS OF CONSTRUCTION, E.G. WALLS, JAMBS, ETC. SHALL ALIGN ACROSS VOIDS AND JOINTS.
7. PARTITIONS SHALL BE CONTINUOUS OVER WALLS ABOVE DOORS (UNLESS NOTED OTHERWISE) WHERE DRYWALL CONTIGUES ABOVE CEILING AND ABOVE THE CEILING LEVEL UP TO THE STRUCTURE ABOVE. ALL GYPSUM BOARD CORNERS SHALL HAVE CORNER BEADS MINIMUM FLOOR TO CEILING. ALL PENETRATIONS IN DRYWALL CONSTRUCTION ABOVE FINISHED CEILING SHALL BE EFFECTIVELY SEALED TO PREVENT SOUND LEAKAGE AND FIRE STOPPING TAPE/CAULK AT ALL RATED PARTITIONS.
8. ALL MECHANICAL CHASES AND OTHER NOTED CHASES ARE TO EXTEND UP TO THE UNDERSIDE OF THE DECK STRUCTURE ABOVE. ALL PLUMBING CHASES UNLESS OTHERWISE NOTED, SHALL EXTEND ABOVE THE HIGHEST ADJOINING CEILING AND BE BRACED TO STRUCTURE.
9. ALL CONSTRUCTION DESIGNATED TO BE SUPPORTED BY ROOF STRUCTURE SHALL BE SUPPORTED BY TOP CHORD OF STRUCTURAL JOISTS AND NOT FROM THE METAL DECK.
10. COORDINATE WITH MILLWORK DRAWINGS FOR PLACEMENT OF BLOCKING IN WALLS/PARTITIONS. ALL WOOD BLOCKING IS TO BE FIRE RETARDANT TREATED.
11. SEAL THE TOP AND BOTTOM OF WALL AS WELL AS ALL PENETRATIONS WHERE SMOKE PARTITIONS ARE DESIGNATED ON THE LIFE SAFETY PLAN TO ELIMINATE THE PASSAGE OF SMOKE.
12. PROVIDE TREATED WOOD BLOCKING AT ALL GRAB BAR LOCATIONS. COORDINATE WITH INTERIOR ELEVATIONS.
13. FIRE CAULK AND SEAL THE TOP AND BOTTOM OF WALL AS WELL AS ALL PENETRATIONS WHERE FIRE BARRIERS ARE DESIGNATED ON THE LIFE SAFETY PLAN TO ELIMINATE THE PASSAGE OF SMOKE.



TYPE 7 (SMOKE BARRIER)		TYPE 6 NON-RATED		TYPE 5 NON-RATED		TYPE 4 NON-RATED		TYPE 3 NOT USED		TYPE 2 NON-RATED		TYPE 1 1-HOUR RATED	
SUFFIX	DETAILS	SUFFIX	DETAILS	SUFFIX	DETAILS	SUFFIX	DETAILS	SUFFIX	DETAILS	SUFFIX	DETAILS	SUFFIX	DETAILS
A	1 LAYER 5/8" GYP. BD. ON EACH SIDE OF 3 5/8" METAL STUDS AT 16" O.C. WITH SOUND ATTENUATION BATTS. EXTEND & SEAL FROM FIN. FLR. TO UNDERSIDE OF DECK ABOVE.	A	1 LAYER 5/8" GYP. BD. ON METAL Z-CHANNELS AND 2" RIGID INSULATION ON CONCRETE TILT-UP PANEL, RE: STRUCTURAL.	A	1 LAYER 5/8" GYP. BD. ON 3 5/8" METAL STUD FRAMING AT 16" O.C. WITH SOUND ATTENUATION BATTS ON 2" RIGID INSULATION ON CONCRETE TILT-UP PANEL W/Z-CHANNELS @ 24" O.C., RE: STRUCTURAL.	A	1 LAYER 5/8" GYP. BD. ON ONE SIDE OF 3 5/8" METAL STUDS AT 16" O.C. WITH SOUND ATTENUATION BATTS. EXTEND STUDS FROM FIN. FLR. TO BOTTOM OF DECK. EXTEND GYP. BD. 6" ABOVE CEILING.	-	-	A	1 LAYER 5/8" GYP. BD. ON EACH SIDE OF 3 5/8" METAL STUDS AT 16" O.C. WITH SOUND ATTENUATION BATTS. EXTEND FROM FIN. FLR. TO DECK.	A	1 LAYER 5/8" TYPE 'X' GYP. BD. ON EACH SIDE OF 3 5/8" METAL STUDS AT 16" O.C. WITH SOUND ATTENUATION BATTS. EXTEND & SEAL FROM FIN. FLR. TO STRUCTURAL DECK ABOVE (ONE HOUR FIRE RATING - UL# U419)
-	-	-	-	-	-	-	-	-	-	B	1 LAYER 5/8" GYP. BD. ON EACH SIDE OF 6" METAL STUDS AT 16" O.C. WITH SOUND ATTENUATION BATTS. EXTEND FROM FIN. FLR. TO DECK.	B	1 LAYER 5/8" TYPE 'X' GYP. BD. ON EACH SIDE OF 6" METAL STUDS AT 16" O.C. WITH SOUND ATTENUATION BATTS. EXTEND & SEAL FROM FIN. FLR. TO STRUCTURAL DECK ABOVE (ONE HOUR FIRE RATING - UL# U419)
-	-	-	-	-	-	-	-	-	-	C	1 LAYER 5/8" MOISTURE RESISTANT GYP. BD. ON EACH SIDE OF 3 5/8" METAL STUDS AT 16" O.C. WITH SOUND ATTENUATION BATTS. EXTEND FROM FIN. FLR. TO DECK.	-	-
-	-	-	-	-	-	-	-	-	-	-	-	-	-

Revision #		Date	
CONSULTANTS			
STRUCTURAL / CIVIL ENGINEER		FIRE PROTECTION / TELECOM ENGINEER	
H2B, INC. 1225 N. LOOP WEST, SUITE 900 HOUSTON, TX 77008 (713) 864-2900		PAGE 400 W. CESAR CHAVEZ STREET, SUITE 500 AUSTIN, TX 78701 (512) 472-6721	
ARCHITECT & M.E.P. ENGINEER			
TX ARCH REGISTRATION NO. BR 2171 TX ENGR REGISTRATION NO. F-17591		APPROVED: DIRECTOR	
APPROVED: ASSOCIATE DIRECTOR		SHEET TITLE VERTICAL & HORIZONTAL ASSEMBLIES	
APPROVED: ASSISTANT DIRECTOR		APPROVED: CHIEF ENGINEER	
APPROVED: CHIEF ENGINEER		PROJECT TITLE NEW ADMINISTRATION BUILDING	
PROJECT LOCATION 2002 HOLCOMBE BOULEVARD HOUSTON, TX 77030		VA PROJECT NUMBER 580-CSI-110	
DATE 06-27-17		BUILDING NUMBER	
CHECKED SAC		DRAWING NUMBER GI-200	
DRAWN MEB		Dwg 5 OF 95	
		U.S. Department of Veterans Affairs	

FULLY SPRINKLERED

BID DOCUMENTS