

VAMC FRESNO - ER CANOPIES

CANOPES DATA

OCCUPANCY TYPE: U (CBC 2010)
CONSTRUCTION TYPE: V-B (CBC 2010 TABLE 601)
FIRE SPRINKLERS: YES
STORIES: 1

ALLOWABLE AREA CALCS: (CBC 2010 TABLE 503)

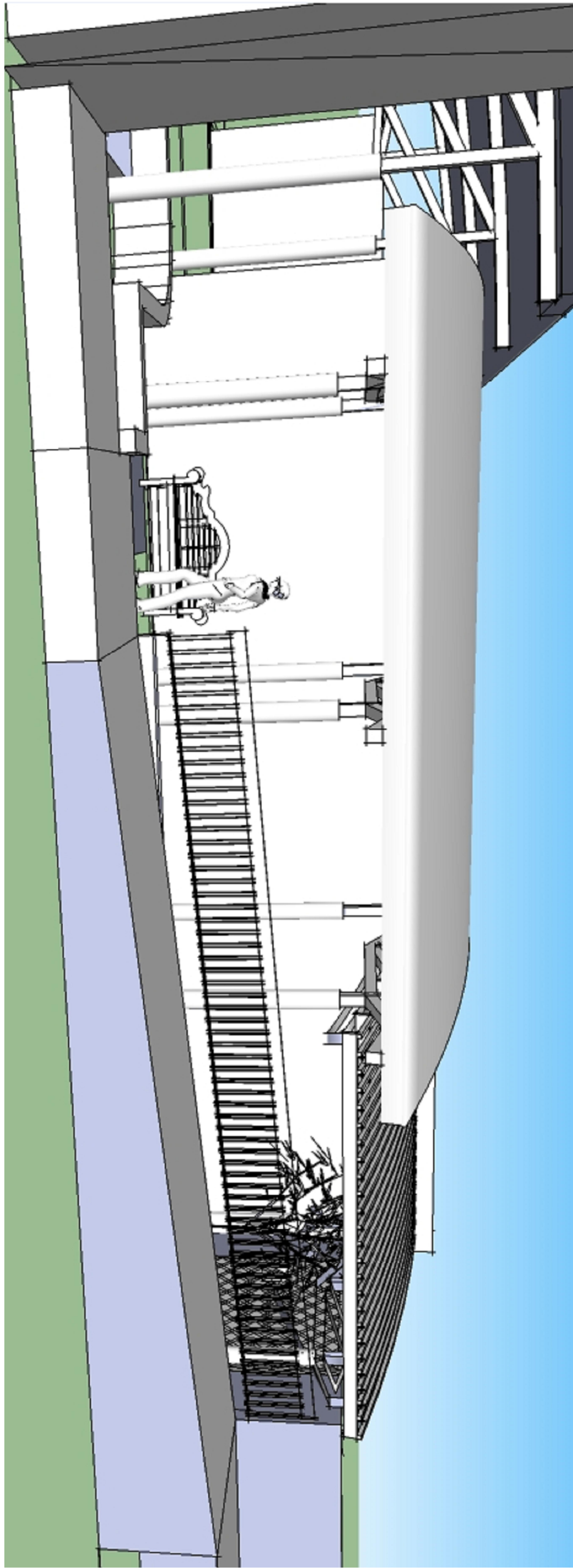
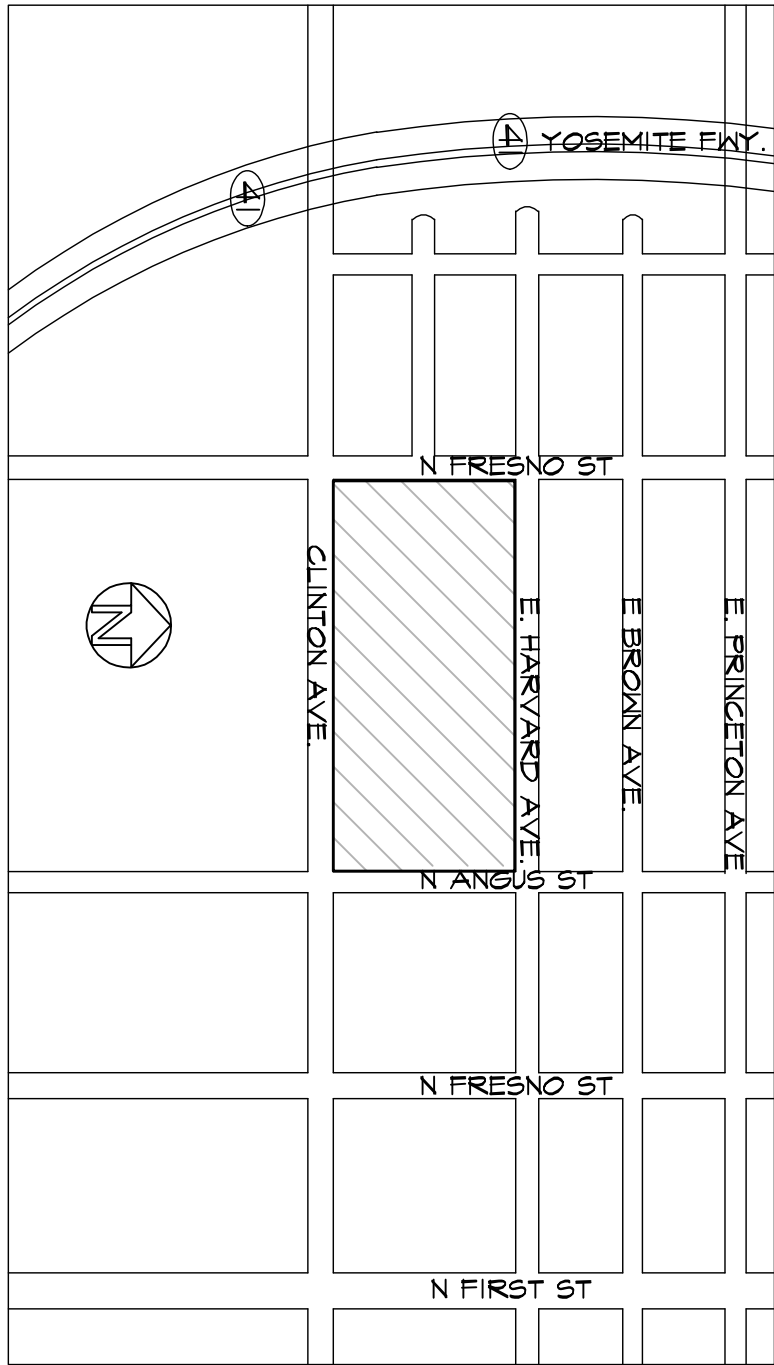
ALLOWABLE AREA - 5,500 SF
SPRINKLER INCREASE - X2 (CBC 2010 SECTION 506.3)
TOTAL ALLOWABLE AREA - 11,000 SF
CANOPY #1 AREA = 1,370 sq.ft. (EXISTING)
CANOPY #2 AREA = 598 sq.ft. (FIRE SPRINKLERS)
CANOPY #3 AREA = 486 sq.ft.
TOTAL AREAS = 2,454 sq.ft.

ALLOWABLE AREA (without increase for sprinklers) 5,500 SF
ACTUAL AREA 2,454 SF
O.K.

SCOPE OF WORK:

- CONSTRUCT TWO STEEL CANOPIES AS PER PLANS:
1) AT SITTING AREA, WEST OF THE EMERGENCY DEPARTMENT ENTRANCE
2) CONSTRUCT TRELLIS BY SITTING AREA CANOPY
- NOTE: SITTING AREA CANOPY AND TRELLIS FOUNDATION ARE ALREADY EXISTING. CONTRACTOR TO ANCHOR NEW POSTS TO EXISTING ANCHOR BOLTS.
- 3) AT PARKING LOT ELEVATOR UPPER ACCESS LEVEL WITH FOUNDATION AS PER PLAN

- CONNECT CANOPIES DRAINAGE PIPES TO EXISTING DRAIN PIPE SYSTEM
- INSTALL LIGHT FIXTURES, ELECTRICAL WORK AND FIRE SPRINKLERS AS PER PLAN
- REMOVE EYEBROWS AND EYEBROW CONCRETE WALLS AT PARKING SIDE OF ELEVATOR ACCESS



SCHEMATIC REPRESENTATION ONLY

INDEX TO SHEETS

G1003	ER CANOPIES COVER SHEET
AS101	ER CANOPIES - FLOOR PLAN
AS102	ER CANOPIES - ROOF PLAN
AS103	WEST PARKING CANOPY - FLOOR PLAN & ROOF PLAN
AS301	ER CANOPIES - FRONT ELEVATION, SECTIONS A & B
AS302	ER CANOPIES - WEST ELEVATION & SECTION D
AS303	WEST PARKING CANOPY - ELEVATIONS & SECTIONS
SB101	N/A
SB102	WEST PARKING CANOPY - FOUNDATION PLAN
ST101	ER CANOPIES - ROOF FRAMING PLAN
ST102	WEST PARKING CANOPY - ROOF FRAMING PLAN
SF501	ER CANOPIES - STRUCTURAL DETAILS
SF502	N/A
SF503	ER CANOPIES - STRUCTURAL DETAILS
SF504	N/A
SF505	ER CANOPIES - STEEL TRUSSES & BEAMS DETAILS
SF506	WEST PARKING CANOPY - STRUCTURAL DETAILS
FP101	FIRE SPRINKLER PLAN
E201	LIGHTING PLAN
E601	ELECTRICAL NOTES AND DETAILS
E602	ELECTRICAL SECTIONS

PROJECT DATA

ALLOWABLE SOIL PRESSURE = 3000 PSF
SEISMIC IMPORTANCE FACTOR: I=1
CO-ORDINATES: LATITUDE = 36.77' / LONGITUDE = -119.78'
SPECTRAL RESPONSE ACCELERATION: Ss = 0.507 / S1 = 0.223
SPECTRAL RESPONSE COEFFICIENTS: Sds = 0.41 / Sd1 = 0.290
SITE COEFFICIENTS: Fa = 1.394 / Fv = 1.955
SEISMIC DESIGN CATEGORY: C
WIND DESIGN SPEED: 110 MPH - EXP. B

one eighth inch = one foot	one quarter inch = one foot	three eighths inch = one foot	one half inch = one foot	three quarters inch = one foot	one inch = one foot	one and one half inches = one foot	three inches = one foot
0 4 8 12 16 20 24 28 32 36 40 44 48 52 56 60 64 68 72 76 80 84 88 92 96 100	0 4 8 12 16 20 24 28 32 36 40 44 48 52 56 60 64 68 72 76 80 84 88 92 96 100	0 4 8 12 16 20 24 28 32 36 40 44 48 52 56 60 64 68 72 76 80 84 88 92 96 100	0 4 8 12 16 20 24 28 32 36 40 44 48 52 56 60 64 68 72 76 80 84 88 92 96 100	0 4 8 12 16 20 24 28 32 36 40 44 48 52 56 60 64 68 72 76 80 84 88 92 96 100	0 4 8 12 16 20 24 28 32 36 40 44 48 52 56 60 64 68 72 76 80 84 88 92 96 100	0 4 8 12 16 20 24 28 32 36 40 44 48 52 56 60 64 68 72 76 80 84 88 92 96 100	0 4 8 12 16 20 24 28 32 36 40 44 48 52 56 60 64 68 72 76 80 84 88 92 96 100

Revision	Date

CONSULTANTS:

ARCHITECTS/ENGINEERS:

PAULI ENGINEERING INC.
944 N. VAN NESS AVE., FRESNO, CA 93728
PH: (559)237-4408 - FAX: (559)237-4404
E-MAIL: pauliengineering@comcast.net
www.pauliengineering.com

COVER SHEET

Project Title
CANOPIES AT ER ENTRANCE AREA
AND FLAT WORK IMPROVEMENTS

Project Number
570-11-123
Building Number
Building 1

Location
205 E. Clinton Ave, Fresno, CA

Date
05-07-2012

Checked
Drawn

Dwg. Number
G1003



Office of
Construction
and Facilities
Management