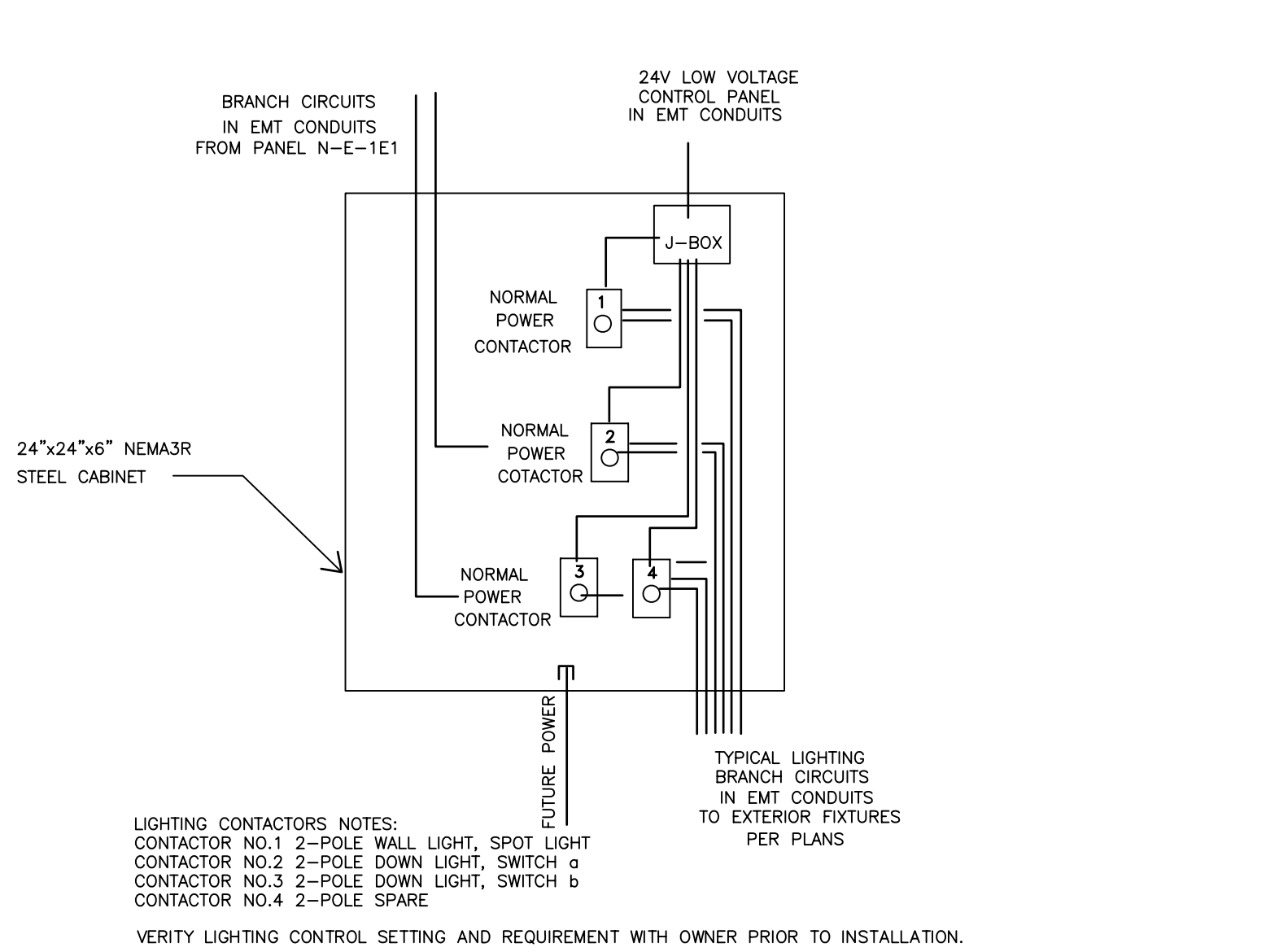
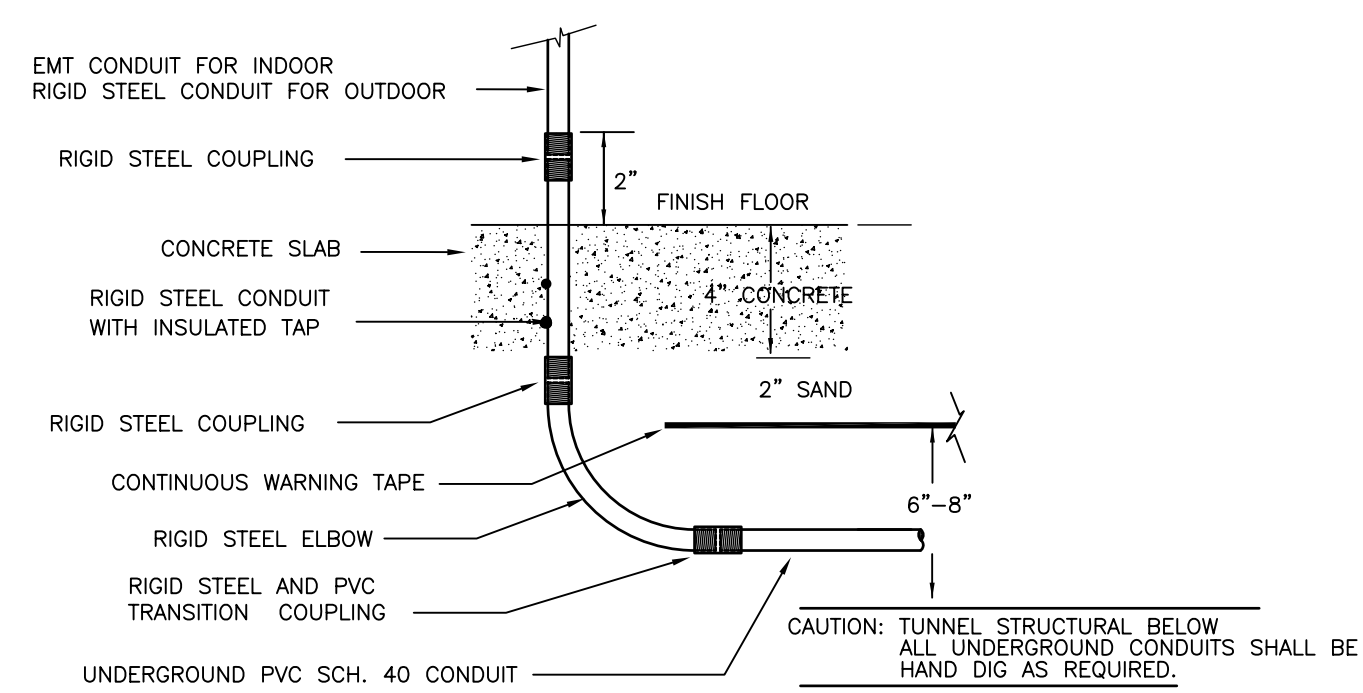


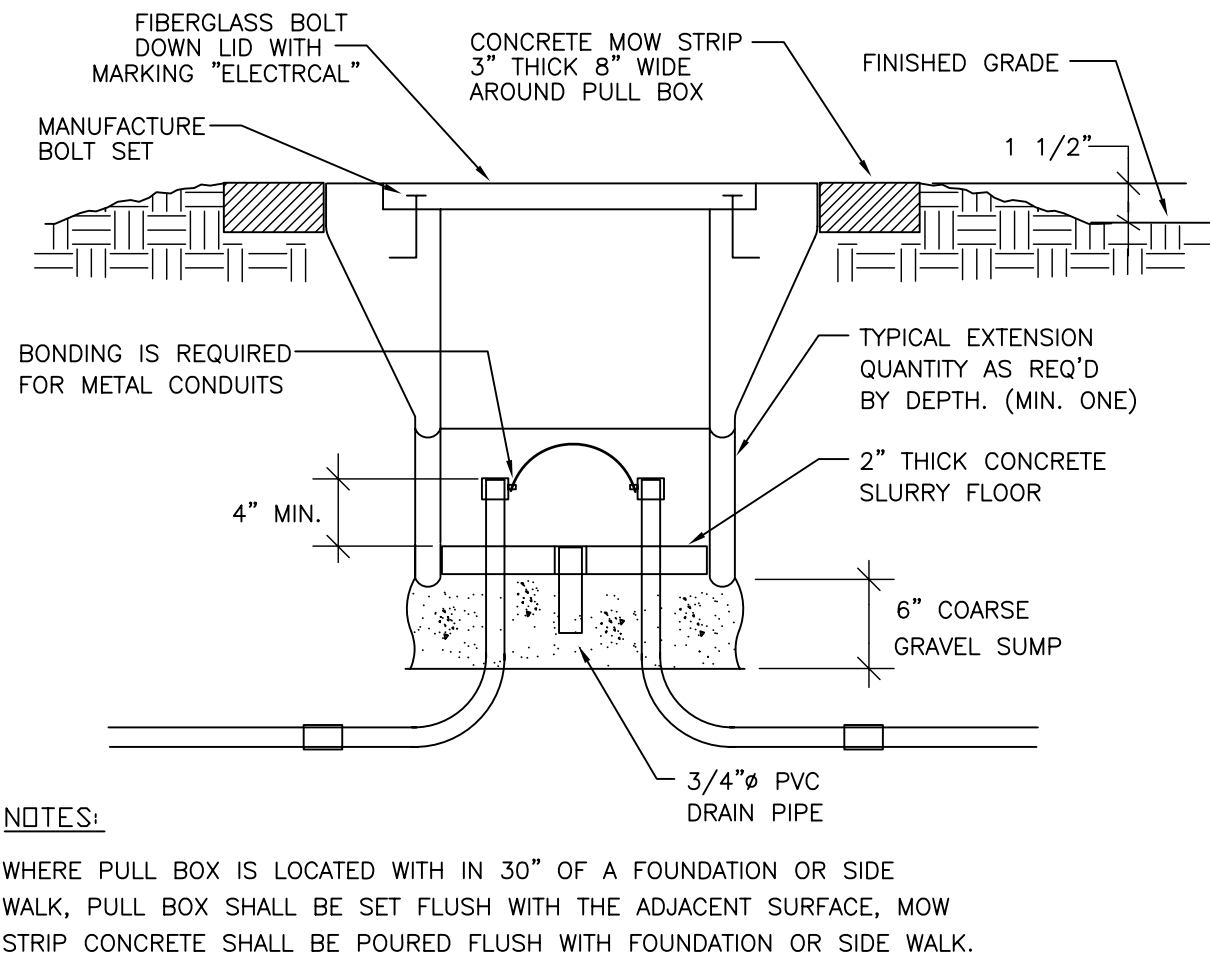
three inches = one foot
one and one half inches = one foot
one inch = one foot
three quarters inch = one foot
three eighths inch = one foot
one eighth inch = one foot
one quarter inch = one foot
one eighth inch = one foot



1 LIGHTING CONTROL CABINET DETAIL
N.T.S.



2 ATRIUM AREA CONDUIT DETAIL
N.T.S.



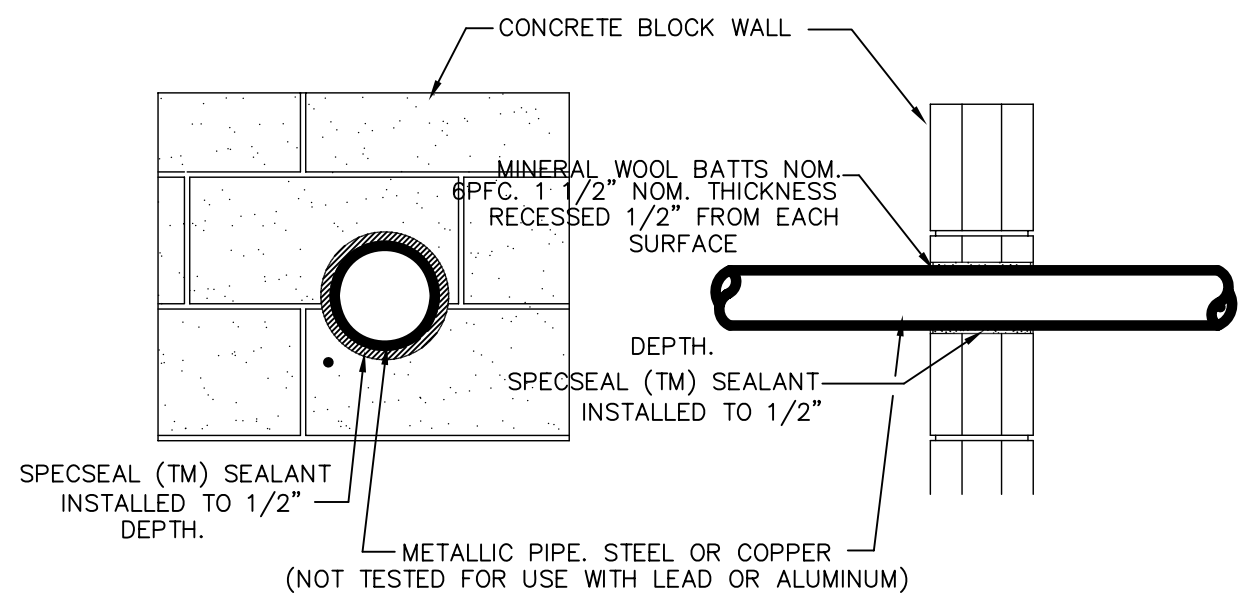
3 PULL BOX AT OPEN YARD DETAIL
N.T.S.

LIGHTING FIXTURE SCHEDULE						
TYPE	SYMBOL	DESCRIPTION	LAMP	MTD	VOLT	WATTS
A	○	6" RECESS LED DOWN LIGHT DAMP LOCATION	LED	RECESS	120	25W
B	□	2 CIRCUIT EGRESS PATH LIGHT, STAINLESS STEEL WALL LUNULE MOUNTED LIGHT ABOVE PLANTER (1) 120V AC CIRCUIT AND (1) EMERGENCY LEB CIRCUIT STANDBY.	LED	WALL +7'6"	120	12W
C	○	RECESS SPOT LIGHT AIM AT WATER FOUNTAIN	MR16	RECESS	120	75W
D	—	4 FT FLUORESCENT STRIP WITH WIRE GUARD	2-F32 TB-35K	SURFACE	120	54W
X	EXIT	2 CIRCUITS LED EXIT SIGN, (3) 120VAC CIRCUIT AND (1) EMERGENCY LEB CIRCUIT STANDBY.	LED	SURFACE	120	5W

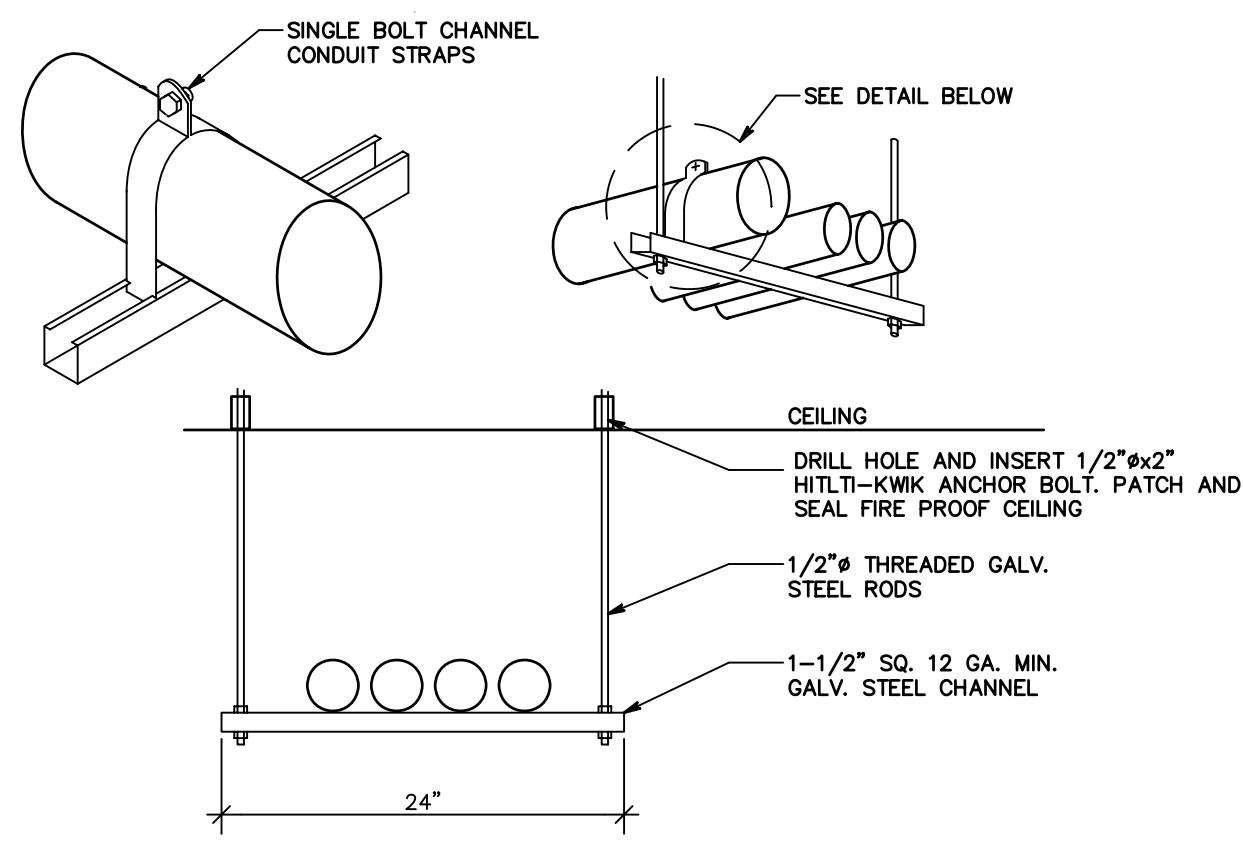
NORMAL POWER									
EXISTING PANEL NW-1BB		FULLY RATED 10,000 AIC	VOLTAGE : 120/208V 1Ø 3W MAIN : 100A BREAKER	FEED : TOP LOCATION : CLOSET	MOUNT : SURFACE INDOOR NEMA1				
CKT NO.	CONNECT LOAD VA LIGHT/OUTLET/ MISC.	SERVING	BREAKER AMP/POLE	TOTAL LOAD VA ØA ØB ØC	BREAKER AMP/POLE	SERVING	CONNECT LOAD VA LIGHT/OUTLET/ MISC.	CKT NO.	
1	2500	(E) ESPRESSO MACHINE	30/2	3400	20/1	(E) REFRIGERATOR	800	2	
3	2500	(E) COFFEE BREWER	30/2	4000	20/1	(E) BLENDER	1500	4	
5	2500	(E) PASTRY CASE	20/1	3510	3300	(E) ICE MAKER	800	6	
7	1500	(E) UNDERCOUNTER REF	20/1	600	20/1	(E) WATER HEATER	2010	8	
11	600	(E) CASH REGISTER	20/1	600	20/1	SPACE		12	
13	600	(E) A/C	20/2	1800	20/1	SPACE		14	
15	1800	SPACE	20/1			SPACE		16	
17	1800	SPACE	20/1			SPACE		18	
19		SPACE	20/1			SPACE		20	
21		SPACE	20/1			SPACE		22	
23		SPACE	20/1			SPACE		24	
NOTES:					TOTAL CONNECTED LOAD PHASE B 13310 VA (111 A) PHASE C 9700 VA (81 A)				
① ALL EXISTING CIRCUITS TO REMAIN.									
② UPDATE CIRCUIT DIRECTORY.									

LIFE SAFETY PANEL									
EXISTING PANEL LS-E-1E		FULLY RATED 10,000 AIC	VOLTAGE : 120/208V 3Ø 4W MAIN : 150 AMP BREAKER	FEED : BOTTOM LOCATION : HALL	MOUNT : FLUSH INDOOR NEMA1				
CKT NO.	CONNECT LOAD VA LIGHT/OUTLET/ MISC.	SERVING	BREAKER AMP/POLE	TOTAL LOAD VA ØA ØB ØC	BREAKER AMP/POLE	SERVING	CONNECT LOAD VA LIGHT/OUTLET/ MISC.	CKT NO.	
1		EXISTING	20/1		20/1	EXISTING		2	
3		EXISTING	20/1		20/1	EXISTING		4	
5		EXISTING	20/1		20/1	EXISTING		6	
7		EXISTING	20/1		20/1	EXISTING		8	
9		EXISTING	20/1		20/1	EXISTING		10	
11		EXISTING	20/1		20/1	EXISTING		12	
13		EXISTING	20/1		20/1	EXISTING		14	
15		EXISTING	20/1		20/1	EXISTING		16	
17	1080 0 0	(E) CANOPY LIGHT	20/1		20/1	EXISTING		18	
19	200 0 0	LOBBY ATRIUM EXIT LIGHT	20/1		100/3	EXISTING		20	
21		SPACE						22	
23		SPACE						24	
NOTES:					TOTAL CONNECTED LOAD PHASE A VA (A) PHASE B VA (A) PHASE C VA (A)				
① ALL EXISTING CIRCUITS TO REMAIN.									
② UPDATE CIRCUIT DIRECTORY.									

- NOTE:
- THE CAULK IS TO BE FORCED INTO THE ANNULAR SPACE TO THE MAXIMUM EXTENT POSSIBLE FLUSH WITH THE EXTERIOR OF THE PENETRATION SURFACE.
 - FINISH CAULKING WITH A 1/4" (6mm) MINIMUM BEAD OF CP 25N/S CAULK APPLIED TO THE PERIMETER OF THE CONDUIT PIPE AT ITS EGRESS FROM THE WALL.
 - THE MAXIMUM ANNULAR SPACE IS NOT TO EXCEED 3/16" (5mm)
 - INSTALL 3M FIRESTOP ON BOTH SIDES OF THE WALL.
 - THESE RECOMMENDATIONS ARE BASED ON PRODUCT PERFORMANCE PER ASTM E-814 (UL 1479) FIRE TEST AND UL THROUGH-PENETRATION FIRESTOP SYSTEM #147



4 CONDUIT PENETRATION FIRESTOP DETAIL
N.T.S.



5 TYPICAL CONDUITS HANGER DETAIL
N.T.S.

NORMAL POWER									
EXISTING PANEL N-W-1B		FULLY RATED 10,000 AIC	VOLTAGE : 120/208V 3Ø 4W MAIN : 225 AMP BREAKER	FEED : BOTTOM LOCATION : HALL	MOUNT : FLUSH INDOOR NEMA1				
CKT NO.	CONNECT LOAD VA LIGHT/OUTLET/ MISC.	SERVING	BREAKER AMP/POLE	TOTAL LOAD VA ØA ØB ØC	BREAKER AMP/POLE	SERVING	CONNECT LOAD VA LIGHT/OUTLET/ MISC.	CKT NO.	
1	1620 0 0	(E) SPRINKLER LIGHT LOBBY	15/1		20/1	(E) LIGHT RM W108A W108		2	
3	1620 0 0	(E) CIRCUIT	20/1		20/1	(E) LIGHT RM 108 W103 REC		4	
5	1350 0 0	(E) CIRCUIT	20/1		20/1	(E) LIGHT PHARMACY		6	
7		(E) CIRCUIT	20/1		20/1	(E) CIRCUIT		8	
9		OUTLET LIGHT RM 109-111	20/1		20/1	SPACE		10	
11	1260 0 0	(E) CIRCUIT	20/1		20/1	RECEPTACLE WAITING AREA		12	
13	300 0 0	A/C CONTROL	20/1		20/1	RECEPT & LIGHT WAITING		14	
15		PANEL JB	20/1		20/1	RECEPTACLE WAITING AREA		16	
17		RECEPTACLE RM W108 W110	20/1		20/1	PANEL JB		18	
19		RECEPTACLE RM W108 W110	20/1		20/1	PANEL JB		20	
21		PANEL JB	20/1		20/1	PANEL JB		22	
23		(E) CIRCUIT	20/1		20/2	SPACE		24	
25		SPACE	20/1			SPACE		26	
27		RECEPTACLE WAITING AREA	20/1	9500	7900	LOBBY NEW PANEL IBB	9500	28	
29		AIR DOOR NORTH ENTR	50/3		20/1	SPACE		30	
31		SPACE	20/1		20/1	(E) CIRCUIT		32	
33		SPACE	20/1		20/1	SPACE		34	
35		(E) CIRCUIT	20/1		30/2	SPACE		36	
37		(E) CIRCUIT	20/1			SPACE		38	
39		(E) CIRCUIT	20/1			SPACE		40	
41		(E) CIRCUIT	20/1			SPACE		42	
NOTES:					TOTAL CONNECTED LOAD PHASE A VA (A) PHASE B VA (A) PHASE C VA (A)				
① ALL EXISTING CIRCUITS TO REMAIN.									
② UPDATE CIRCUIT DIRECTORY.									

NORMAL POWER									
EXISTING PANEL N-E-1E1		FULLY RATED 10,000 AIC	VOLTAGE : 120/208V 3Ø 4W MAIN : 100 AMP BREAKER	FEED : BOTTOM LOCATION : HALL	MOUNT : FLUSH INDOOR NEMA1				
CKT NO.	CONNECT LOAD VA LIGHT/OUTLET/ MISC.	SERVING	BREAKER AMP/POLE	TOTAL LOAD VA ØA ØB ØC	BREAKER AMP/POLE	SERVING	CONNECT LOAD VA LIGHT/OUTLET/ MISC.	CKT NO.	
1	1620 0 0	CANOPY LIGHT	20/1	2420	20/1	WIREMOLD E107	800	2	
3	1620 0 0	CANOPY LIGHT	20/1	2420	20/1	WIREMOLD E107	800	4	
5	1350 0 0	CANOPY LIGHT	20/1	1600	2150	PLUGS E107A S. WALL	800	6	
7	800	PLUGS E105A S. WALL	20/1	1600	800	PLUGS E105A S. WALL	800	8	
9	800	PLUGS AND LIGHT E105	20/1	800	20/1	SPACE		10	
11	1260 0 0	CANOPY LIGHT	20/1	2800	3760	30/2 WALL A/C UNIT		12	
13	300 0 0	INGROUND/FLOOD LIGHT	20/1	2500	2500	NEW FOUNTAIN PUMP 14.2 FLA	0	14	
15	0 0 800	FUTURE AUTO DOOR (1)	20/1		30/2	(N) LIGHT ATRIUM	500	16	
17	0 0 800	FUTURE AUTO DOOR (1)	20/1			(N) LIGHT ATRIUM	500	18	
19	0 0 800	FUTURE AUTO DOOR (1)	20/1	1300	500	FUTURE CEILING FAN	200	20	
21		SPACE				SPACE		22	
23		SPACE				SPACE		24	
25		SPACE				SPACE		26	
27		SPACE				SPACE		28	
29		SPACE				SPACE		30	
31		SPACE				SPACE		32	
33		SPACE				SPACE		34	
35		SPACE				SPACE		36	
37		SPACE				SPACE		38	
39		SPACE				SPACE		40	
41		SPACE				SPACE		42	
NOTES:					TOTAL CONNECTED LOAD PHASE A 8120 VA (68 A) PHASE B 6220 VA (52 A) PHASE C 8610 VA (72 A)				
① PROVIDE NEW MATCHING BREAKER AND NEW BRANCH CIRCUIT.									
② UPDATE CIRCUIT DIRECTORY.									

ELECTRICAL SYMBOLS

- A-1 HOME RUN MINIMUM 3/4" CONDUIT
- BRANCH CIRCUIT NO.
- NO. OF CONDUCTORS
- GROUND CONDUCTOR
- LIGHT FIXTURE WITH J-BOX
- FIXTURE TYPE
- BRANCH CIRCUIT
- DISTRIBUTION PANEL OR TERMINAL CABINET
- JUNCTION BOX
- WALL BRACKET OUTLET
- FLUORESCENT FIXTURE
- CONDUIT RUN UNDER FLOOR
- CONDUIT RUN IN CEILING AND IN WALL
- MOTOR DISCONNECT FUSED SWITCH
- CONDUIT RACEWAY
- NEW
- EXISTING TO REMAIN

100% SUBMITTAL - FOR CONSTRUCTION

CONSULTANTS: CONSULTING ENGINEERS JOHN CHONG ENGINEERING jcengineer@aol.com (559) 325-9988 • FAX 251-9401 2021 E. DECATUR AVE, FRESNO CA 93712		ARCHITECT/ENGINEERS: PAULI ENGINEERING, INC. 944 N. VAN NESS AVE., FRESNO, CA 93728 PH: (559)237-4408 - FAX: (559)237-4409 E-MAIL: pauliengineering@sbcglobal.net www.pauliengineering.com		Drawing Title DETAILS AND SCHEDULES		Project Title CANOPIES AT ATRIUM WITH FLAT WORK IMPROVEMENTS		Project Number 570-11-123		Office of Construction and Facilities Management	
Revisions		Date		Approved Project Director		Location 2615 E. Clinton Ave, Fresno, CA		Building Number Building 1		Drawing Number E610	
						Date 05-07-2012		Checked		Drawn	
										Dwg. of --	