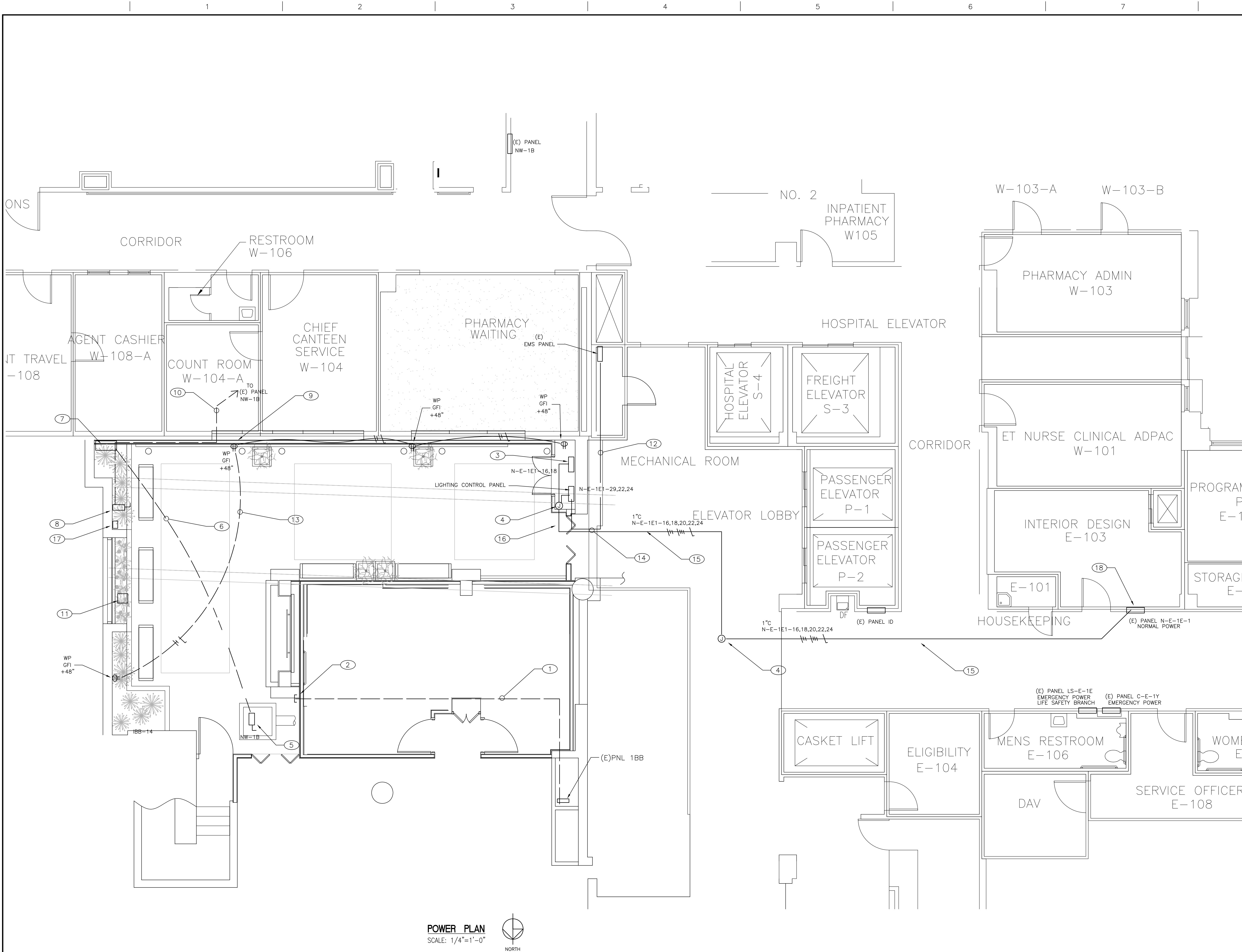


three inches = one foot
one and one half inches = one foot
one inch = one foot
three quarters inch = one foot
one half inch = one foot
three eighths inch = one foot
one quarter inch = one foot
one eighth inch = one foot



- ### SHEET NOTES
- 1 EXISTING SPARE CONDUIT INSTALLED IN LOBBY REMODEL PROJECT. FOR REFERENCE ONLY.
 - 2 APPROXIMATE LOCATION FOR EXISTING U.G CONDUIT STUB OUT. FOR REFERENCE ONLY.
 - 3 PROVIDE 1" 2#10 THWN CU, 1#12 CU GND AND POWER CONNECTION FOR WATER FOUNTAIN CONTROL PANEL, 14FLA 230V SINGLE PHASE VFD. SEE SUBMITTAL FOR EXACT LOCATION AND REQUIREMENT PRIOR TO INSTALLATION.
 - 4 PROVIDE WP 6"x6"x4" J-BOX FOR NEW CONDUITS RACEWAY INSTALLATION.
 - 5 REROUTE AND RECONNECT EXISTING SUMP PUMP POWER CONDUCTORS AND CONTROL WIRING.
 - 6 NEW UNDERGROUND CONDUIT 3/4" 2#9 PLUG 1#10 CU GND FOR SUMP PUMP POWER CONNECTION. PLUS (1) 3/4" FOR CONTROL WIRING.
 - 7 INTERCEPT AND REUSE EXISTING CONDUIT AND INSTALL NEW SUMP PUMP CONTROL PANEL. SURFACE MOUNTED CONTROL PANEL ON NEW WALL FINISHED.
 - 8 REMOVE EXISTING DISCONNECT SWITCH, REROUTE EXISTING CONDUIT AND CIRCUIT TO NEW SUMP PUMP CONTROL PANEL PER PLANS.
 - 9 RELOCATED EXISTING OUTLET ON NEW WALL FINISHED. PROVIDE WP GFI OUTLET ON 48" AFF.
 - 10 EXISTING CONDUIT HOME RUN TO (E) PANEL NW-1B, REPLACE EXISTING CONDUCTORS WITH 2#8, PLUG 1#10 CU GND CONDUCTORS.
 - 11 RELOCATED AND REPLACED EXISTING PA SPEAKER, SURFACE MOUNTED NEW SPEAKER ON NEW WALL FINISHED. REROUTE EXISTING CONDUIT AND WIRING AS REQUIRED.
 - 12 3/4" IN CEILING WITH CAT. SE AUTO CABLE BACK TO EXISTING EMS PANEL. COIL UP 5 FEET CABLE INSIDE BOTH EMS PANELS. OWNER PROVIDE FINAL CONNECTION.
 - 13 NEW 3/4" U.G 2#12 THWN, 1#12 CU GND.
 - 14 CORE DRILL AND SEAL EXTERIOR WALL FOR NEW CONDUIT INSTALLATION.
 - 15 NEW 1" 2#10, 4#12, 1#12 GND SURFACE MOUNTED IN EXISTING CEILING CAVITY, PROVIDE MOUNTING BRACKET.
 - 16 NEW CONDUITS AND WIRING SURFACE MOUNTED INSIDE NEW SOFFIT.
 - 17 REMOVE EXISTING EMS PANEL AND ASSOCIATED CONDUITS AND WIRING.
 - 18 EXISTING NORMAL POWER PANEL, INSTALL NEW CONDUIT AND WIRING FOR NEW BRANCH CIRCUITS PER PLANS. SEE PANEL SCHEDULE.

POWER PLAN
SCALE: 1/4"=1'-0"

100% SUBMITTAL - FOR CONSTRUCTION

Revisions	Date	CONSULTANTS: CONSULTING ENGINEERS JOHN CHONG ENGINEERING jcengineer@aol.com (559) 925-9988 • FAX 257-9401 2227 E. DECATUR AVE., FRESNO CA 93710		ARCHITECT/ENGINEERS: PAULI ENGINEERING, INC. 944 N. VAN NESS AVE., FRESNO, CA 93728 PH: (559)237-4408 - FAX: (559)237-4409 E-MAIL: pauliengineering@sbcglobal.net www.pauliengineering.com	Drawing Title POWER PLAN	Project Title CANOPIES AT ATRIUM WITH FLAT WORK IMPROVEMENTS	Project Number 570-11-123	Office of Construction and Facilities Management
					Approved Project Director	Location 2615 E. Clinton Ave, Fresno, CA	Drawing Number E210	