

DRAINAGE PLAN
SCALE: 3/8"=1'-0"

CONSULTANTS:

ARCHITECT/ENGINEERS:

PAULI ENGINEERING INC.
944 N. VAN NESS AVE., FRESNO, CA 93728
PH: (559)237-4408 - FAX: (559)237-4404
E-MAIL: pauliengineering@comcast.net
www.pauliengineering.com



Project Title
**ATRIUM CANOPIES
DRAINAGE PLAN**

Approved Project Director

Location
205 E. Clinton Ave, Fresno, CA

Checked

Drawn

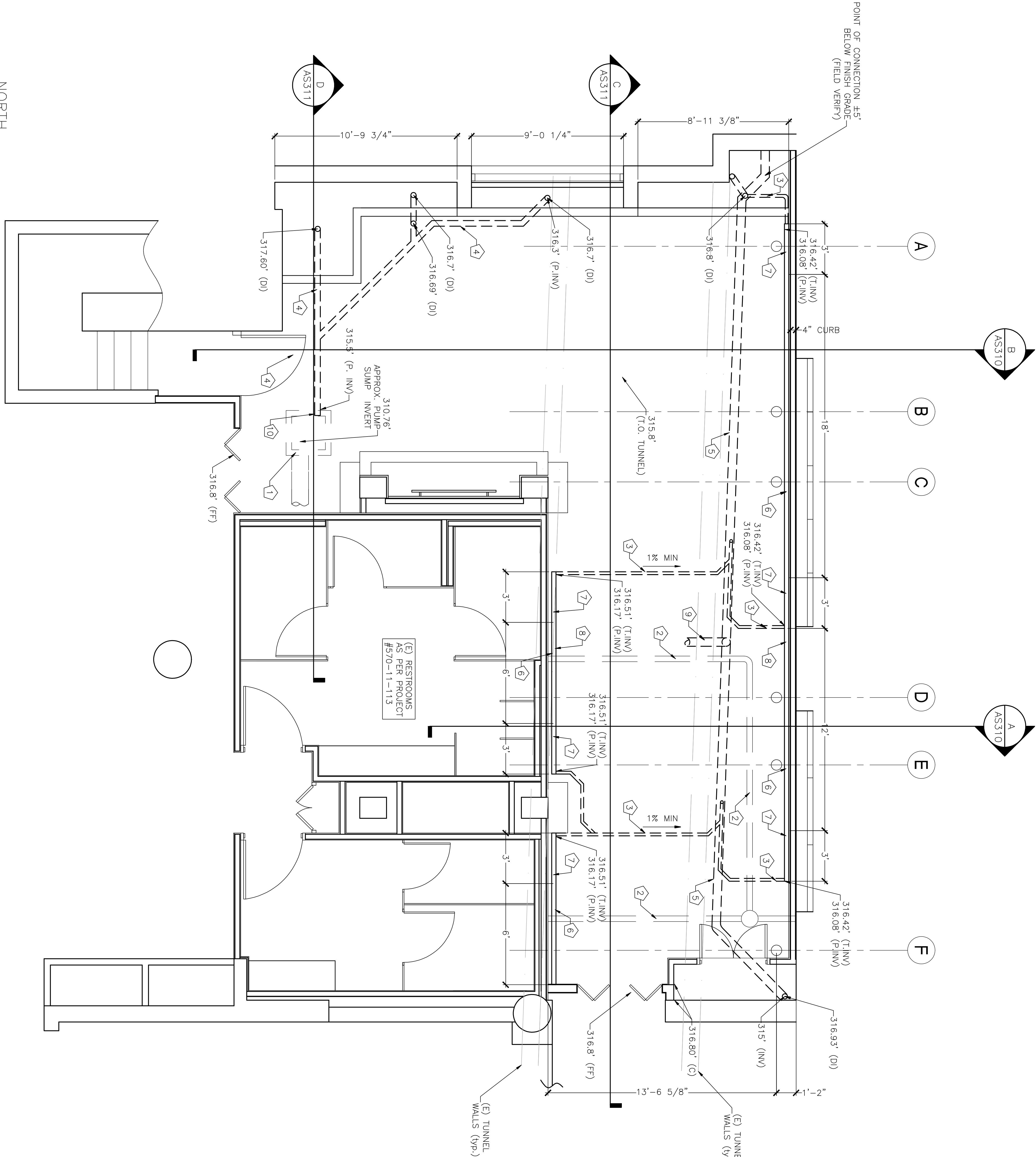
Project Number
570-11-123

Building Number
Building 1

Drawing Number
CS111

Dwg. of --

Office of
Construction
and Facilities
Management



REFERENCES

- F.F. FINISH FLOOR
- D.I. DRAIN INLET
- L NEW PIPE LENGTH
- T.INV TRENCH INVERT
- P.INV PIPE INVERT
- == NEW PIPE AS PER PLAN
- === NEW DRAIN AS PER PLAN
- - - EXISTING SEGMENT OF PIPE TO REMAIN
- EXISTING SEGMENT OF PIPE TO BE REMOVED

NOTE:
- CONTRACTOR TO VERIFY THAT PIPE SLOPE IS 1% MINIMUM OR AS SPECIFIED IN THE PLANS AT ALL POINTS. IF FIELD VERIFICATION INDICATES SHALLOWER SLOPE BRING IT TO THE ATTENTION OF THE ENGINEER OF RECORD AND VA COR.
- CONTRACTOR TO AVOID PIPE FITTING CONNECTIONS WITHIN A 36" RADIUS OF CANOPY POSTS LOCATION
- CONTRACTOR TO COORDINATE WITH SHEETS CS1112, SF517 AND E210 FOR MORE UNDERGROUND UTILITIES.

KEY NOTES

- 1 (E) CHRISTY BOX U-21 (PUMP SUMP)
- 2 (E) SEWER PIPE TO REMAIN
- 3 (N) 2" PVC SCH40 DRAIN PIPE
- 4 (N) 4" SDR-35 DRAIN PIPE
- 5 (N) 6" SDR-35 DRAIN PIPE
- 6 (N) NDS MINI CHANNEL™ DRAINS PART #500 OR SIMILAR
- 7 (N) NDS MINI CHANNEL™ ACCESSORIES PART #550 OR SIMILAR
- 8 (N) NDS GRATE PART#543 (BLACK) OR SIMILAR
- 9 (E) 6" CAST IRON PIPE FROM SUMP PUMP TO BE CONNECTED TO (N) DRAIN PIPE
- 10 SUMP PUMP PENETRATION AS PER DETAIL H/SF516