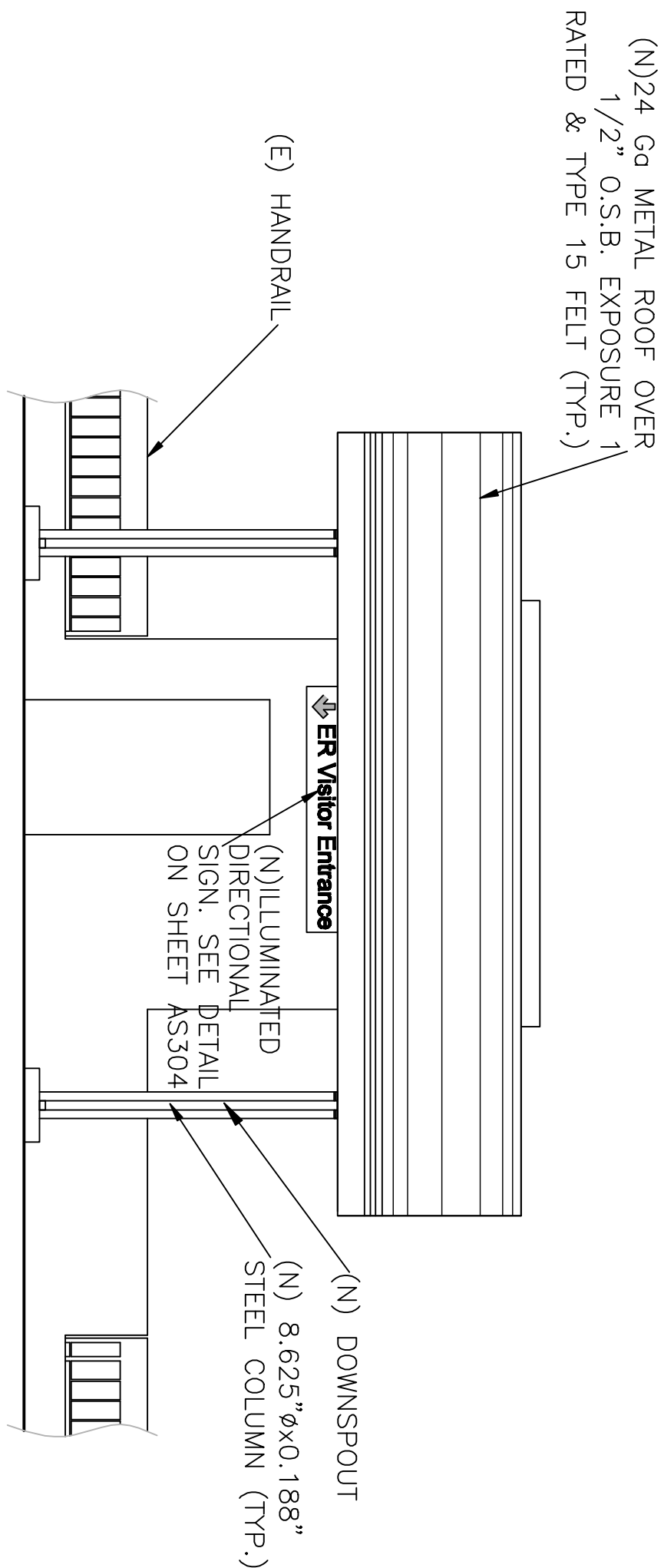
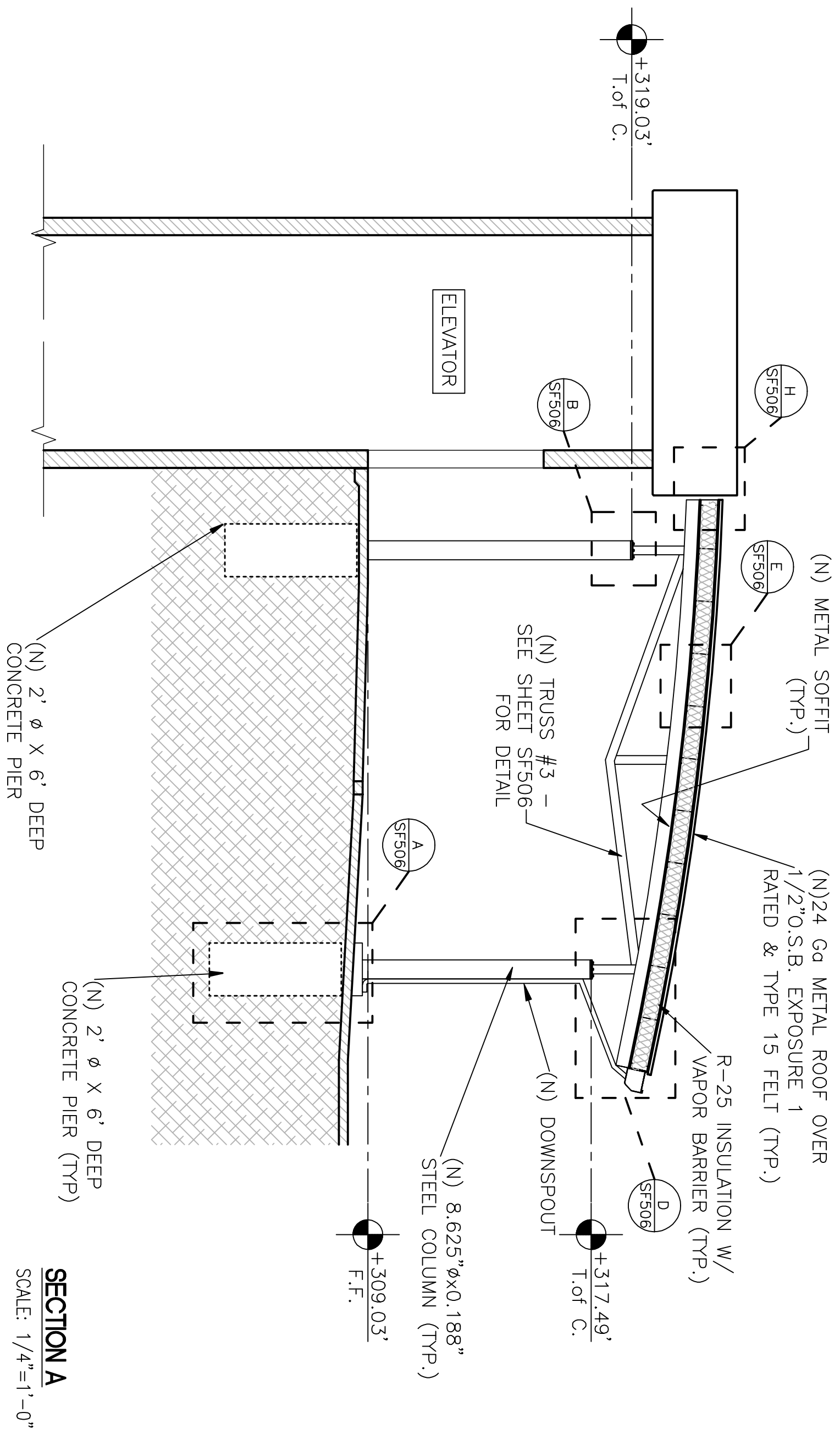


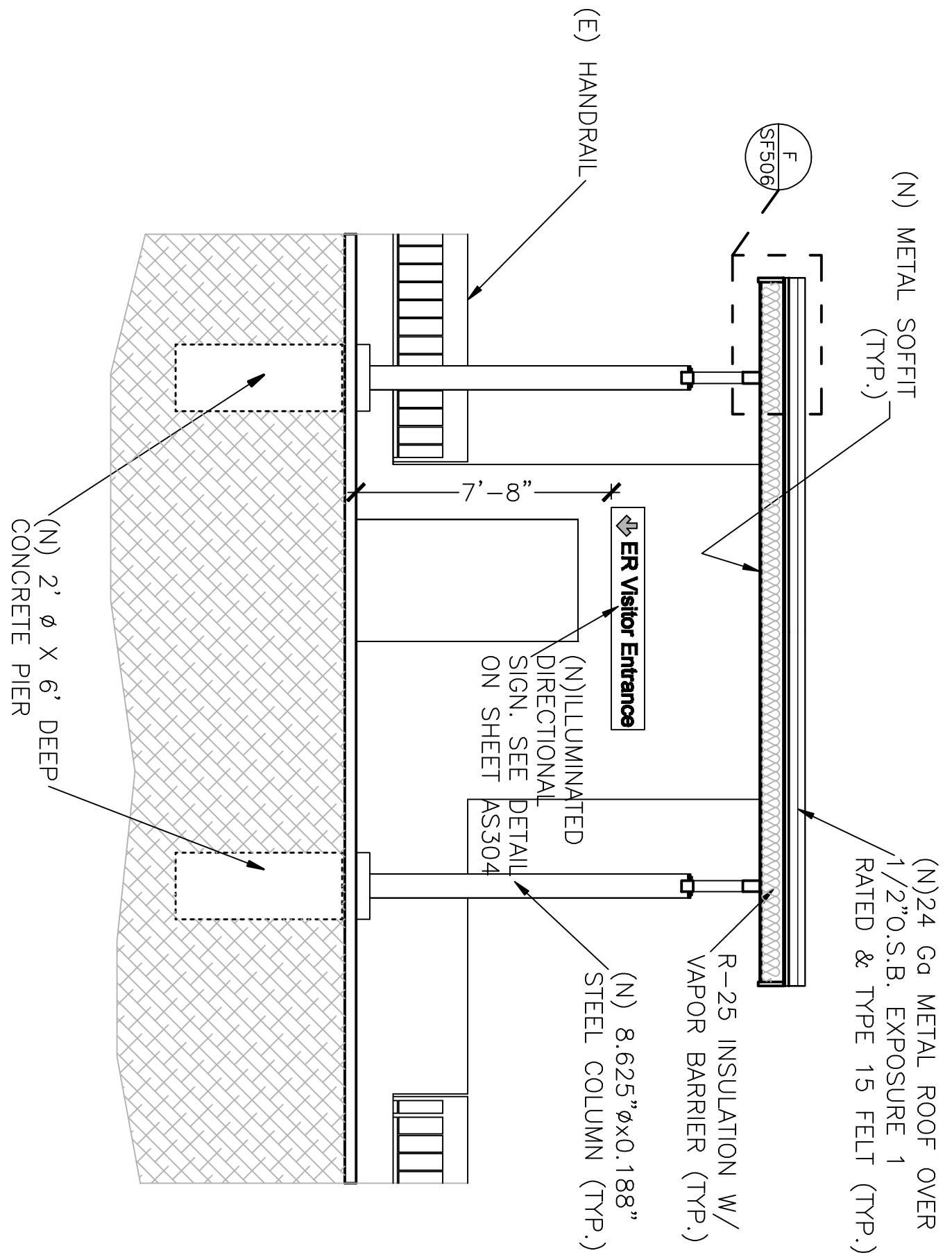
**SIDE ELEVATION**  
SCALE: 1/4"=1'-0"



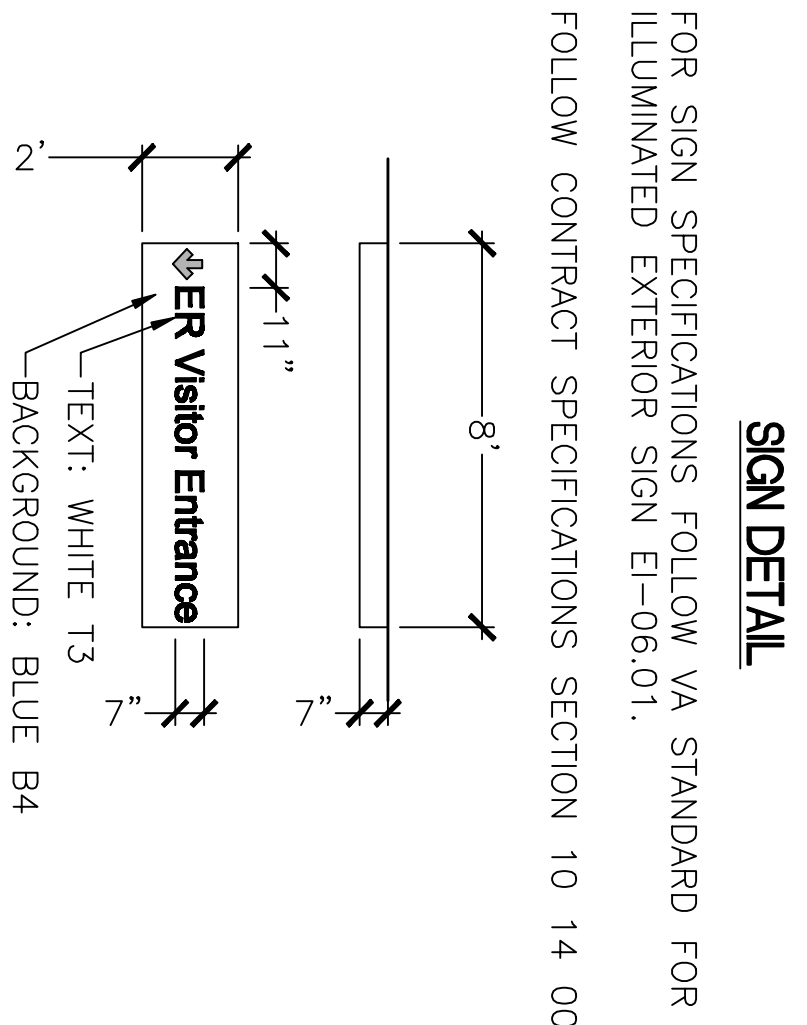
**FRONT ELEVATION**  
SCALE: 1/4"=1'-0"



**SECTION A**  
SCALE: 1/4"=1'-0"



**SECTION B**  
SCALE: 1/4"=1'-0"



**SIGN DETAIL**

FOR SIGN SPECIFICATIONS FOLLOW VA STANDARD FOR ILLUMINATED EXTERIOR SIGN E-06.01.  
FOLLOW CONTRACT SPECIFICATIONS SECTION 10 14 00

INTERNALLY ILLUMINATED WALL MOUNTED SIGN TO BE PLACED ON WALL ABOVE ELEVATOR UPPER LEVEL ENTRANCE.

GRAPHIC PROCESS-ILLUMINATED, ROUTED OUT COPY BACKED WITH WHITE TRANSLUCENT ACRYLIC.  
COORDINATE WITH VA COTR FOR SIGN ILLUMINATION CONTROL METHOD.  
SUBMIT SHOP DRAWINGS FOR APPROVAL BY VA COTR, AND ENGINEER OF RECORD BEFORE PURCHASING SIGN.

100% SUBMITTAL - FOR CONSTRUCTION

Revision	Date

CONSULTANTS:



ARCHITECTS/ENGINEERS:

**PAUL J. ENGINEERING, INC.**  
944 N. VAN NESS AVE., FRESNO, CA 93728  
PH: (559)237-4408 - FAX: (559)237-4404  
E-MAIL: paul@engrinc.com  
www.paulengrinc.com

**Drawing Title**  
WEST PARKING CANOPY  
SECTIONS & ELEVATIONS

Approved Project Director

**Project Title**  
CANOPES AT ER ENTRANCE AREA  
AND FLAT WORK IMPROVEMENTS

**Location**  
2615 E. Clinton Ave, Fresno, CA

**Date**  
06-07-2012

**Checked**

**Drawn**

**Project Number**  
570-11-123

**Building Number**  
Building 1

**Drawing Number**  
AS303

**Dwg. of --**

**Office of**  
Construction  
and Facilities  
Management

Department of  
Veterans Affairs