

RECESSED, 2-LAMP, DIRECT-INDIRECT LUMINAIRE: FOR LAY-IN GRID MOUNTING, WITH CLEAR PRISMATIC LENS PANEL. NOMINAL 2' X 4' IN SIZE AND APPROXIMATELY 3-3/4 INCHES DEEP.

HOUSING: DIE FORMED 20GA COLD ROLLED STEEL. APPROPRIATE HARDWARE FOR A MINIMUM OF (4) POINTS OF SUPPORT IN APPLICABLE CEILING SYSTEM. WIRING AND BALLAST ACCESSIBLE FROM BELOW. SUPPORT CLIPS PROVIDED FOR WIRING. SEPARATE CAPTIVE NON-TURNING STUD FOR FIXTURE GROUNDING.

REFLECTOR: MICRO PRISMATIC ACRYLIC LENS COMPOSED OF FROSTED AND CLEAR BLEND.

SHIELDING: LINEAR PRISMATIC CLEAR ACRYLIC LENS. LENS SECURED TO HOUSING VIA INJECTION MOULDED INSERTS FOR EASY LAMP ACCESS.

FINISHES: FIXTURE HOUSINGS ARE STANDARD WHITE USING ELECTROSTATICALLY APPLIED POLYESTER POWDER COAT PAINT.

LAMPS: T8 FLUORESCENT LAMPS AS SPECIFIED.

BALLAST: TWO-LAMP, HPF, RAPID START ELECTRONIC TYPE AS SPECIFIED.

DETAIL FOR LIGHTING



DEMO NOTES (SEE SDW FOR MORE DETAILS)

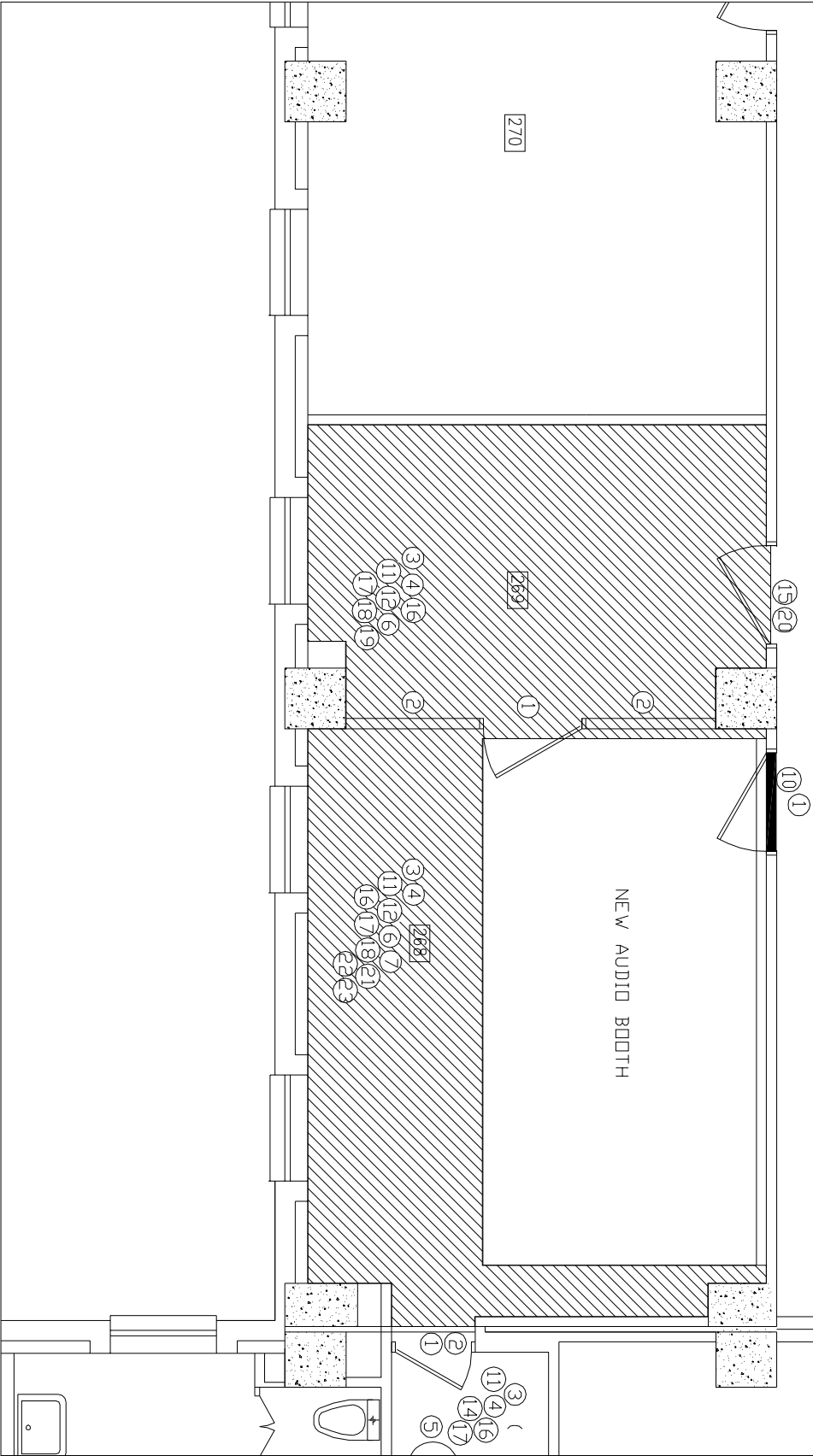
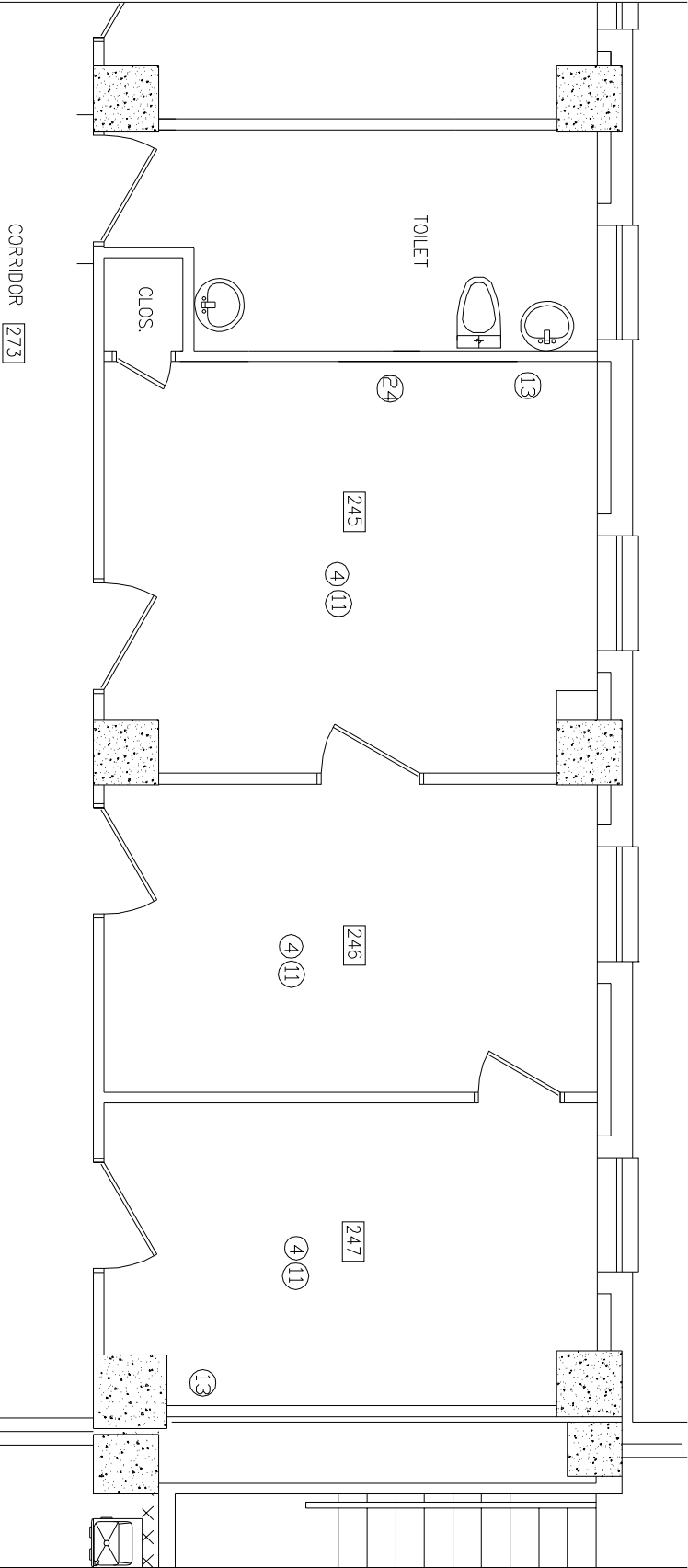
1	REMOVE DOOR, FRAME
2	REMOVE WALL TO SUBSTRATE, TERRAZO COVE BASE, ELECTRICAL
3	ABATE EXISTING FLOOR, MASTIC
4	REMOVE EXISTING LIGHTS IN ROOM
5	REMOVE EXISTING SINK, PLUMBING
6	REMOVE EXISTING CEILING TILE AND GRID
7	REMOVE EXISTING FIRE SPRINKLERS
8	
9	

NEW WORK NOTES (SEE SDW FOR MORE DETAILS)

10	PROVIDE AND INSTALL NEW WALL, METAL STUDS, 3/8 SHEETROCK
11	PROVIDE AND INSTALL NEW LIGHTS (SEE LIGHT DETAIL)
12	PROVIDE AND INSTALL NEW CARPET
13	PROVIDE AND INSTALL NEW SINK, BASE CABINET, PLUMBING
14	PROVIDE AND INSTALL NEW AMTICO FLOORING
15	PROVIDE AND INSTALL TRANSITION STRIP
16	PROVIDE AND INSTALL NEW COVE BASE
17	PROVIDE AND INSTALL KNOCK DOWN FINISH, ONE COAT PRIMER, TWO COATS SHERWIN WILLIAMS HARMONY PAINT, SEMI-GLOSS
18	PROVIDE AND INSTALL NEW CEILING TILE AND GRID
19	ADJUST SPRINKLER HEADS TO NEW CEILING HEIGHT, A/C DUCT, AND DIFFUSER, QTY. 2
20	PROVIDE AND INSTALL NEW WEATHER STRIPPING
21	RELOCATE FIRE SPRINKLERS, QTY. 4
22	PROVIDE AND INSTALL NEW 8" A/C DUCT, QTY. 2
23	PROVIDE AND INSTALL FIRE STROBE, CONNECT TO EXISTING FIRE SYSTEM, QTY. 2
24	PAINT EXIST. METAL UPPER AND LOWER CABINETS, MOUNT TO THE WALL
25	

LEGEND

-  NEW CARPET
-  NEW WALL



GENERAL NOTE:  
1) CONTRACTOR WILL NEED TO PROVIDE AND INSTALL PLASTIC FOR THE RETURN AIR, MAINTAIN NEGATIVE PRESSURE TO THE CORRIDOR, PROVIDE STICKY MATS, VACUUM/W HEPA FILTER TO CLEAN OFF CLOTHES/SHOES, AND PLASTIC ANY PENETRATIONS AT THE WALLS.