

1 INTERSTITIAL SPACE SIXTH FLOOR-AREA A
87 SCALE 1/8"=1'-0"

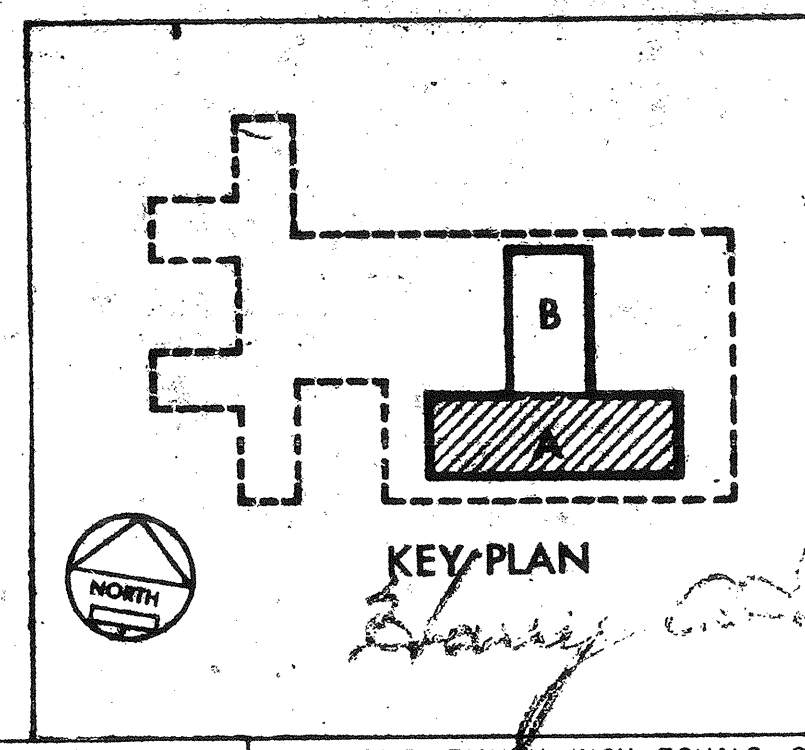
REFERENCE IDENTIFICATION PLANS
8' 6" 4' 2' 0' 8'
1/8" = 1' 0"

NOTES

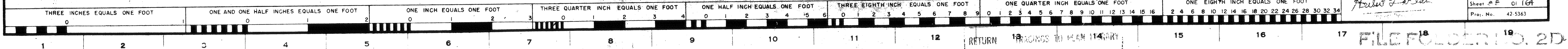
1. ON-OFF PUSHBUTTON SWITCH TO CONTROL LIGHTING CONTACTOR; REFER TO DWG 1E6 FOR LIGHTING CONTROL DIAGRAM.
2. REFER TO DWG 1E10 FOR LIGHTING FIXTURE HANGER DETAILS.
3. ALL LIGHTING FIXTURES TYPE E-4 UNLESS OTHERWISE NOTED.
4. REFER TO DWG 1E10 FOR PANEL, CABINET, & EQUIPMENT MOUNTING.

AS-BUILT DRAWING

OCT 1978



INTERST. SPACE 6TH FLR. AREA A	
BUILDING NO 1	SCALE 1/8"=1'-0"
760 BED M. S. & N. AND PSYCHIATRIC HOSPITAL	
VETERANS ADMINISTRATION SAN ANTONIO, TEXAS	
Drawn by DA JH	Checked by RA
DATE 10/1/78	DATE 10/1/78
GOLEMON & ROLFE ARCHITECTS SAN ANTONIO ASSOCIATED ARCHITECTS HOONAN, KROCKER & ROGERS ARCHITECTS & ENGINEERS EDWARD R. GONDECK, ARCHITECT WILLIAM E. PARRISH, ARCHITECT ADAMS & ADAMS, ARCHITECTS	
DRAWING NUMBER 1-E 87	
Sheet 87 of 164	
Proj. No. 42-5363	



RETURN 18 ROUNDS TO PLAN 114 ART

FILE FOLDER 13.2D