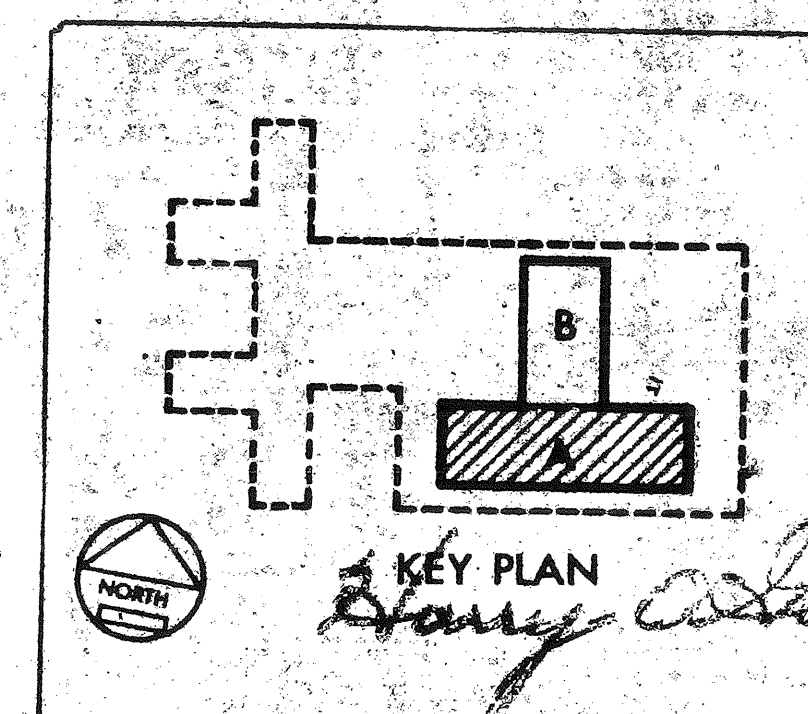


1. INTERSTITIAL SPACE SEVENTH FLOOR - AREA A
 93 SCALE 1/8" = 1'-0"

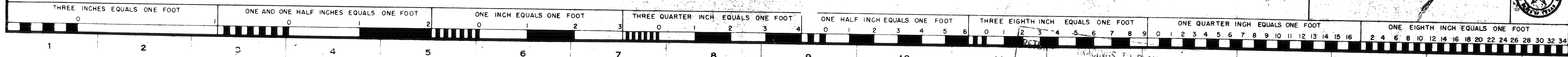
NOTE

1. ON-OFF PUSHBUTTON SWITCH TO CONTROL LIGHTING CONTACTOR. REFER TO DWG. 1-E-93 FOR LIGHTING CONTROL DIAGRAM.
2. REFER TO DWG. 1-E-106 LIGHTING FIXTURE HANGER DETAILS.
3. ALL LIGHTING FIXTURES ARE TYPE 'E4' UNLESS OTHERWISE NOTED.
4. REFER TO DWG. 1-E-106 FOR PANEL CABINET & EQUIPMENT MOUNTING.

AS-BUILT DRAWING
 OCT 1973



INTERST. SPACE 7TH FLR AREA A BUILDING NO 1 SCALE 1/8" = 1'-0"	
760 BED M. S. & N. AND PSYCHIATRIC HOSPITAL	
VETERANS ADMINISTRATION SAN ANTONIO, TEXAS	
Drawn: DA Checked: RA Date: 10/1/73	REVISIONS 1. 10/1/73
GOLEMON & ROLFE ARCHITECTS SAN ANTONIO ASSOCIATED ARCHITECTS ARCHITECTS & ENGINEERS EDWARD R. CONDELL ARCHITECT WILLIAM E. PARISH ARCHITECT ADAMS & ADAMS ARCHITECTS	
DRAWING NUMBER 1-E-93 Sheet 34 of 164 Proj. No. 42-5363	



FILE FOLD 120