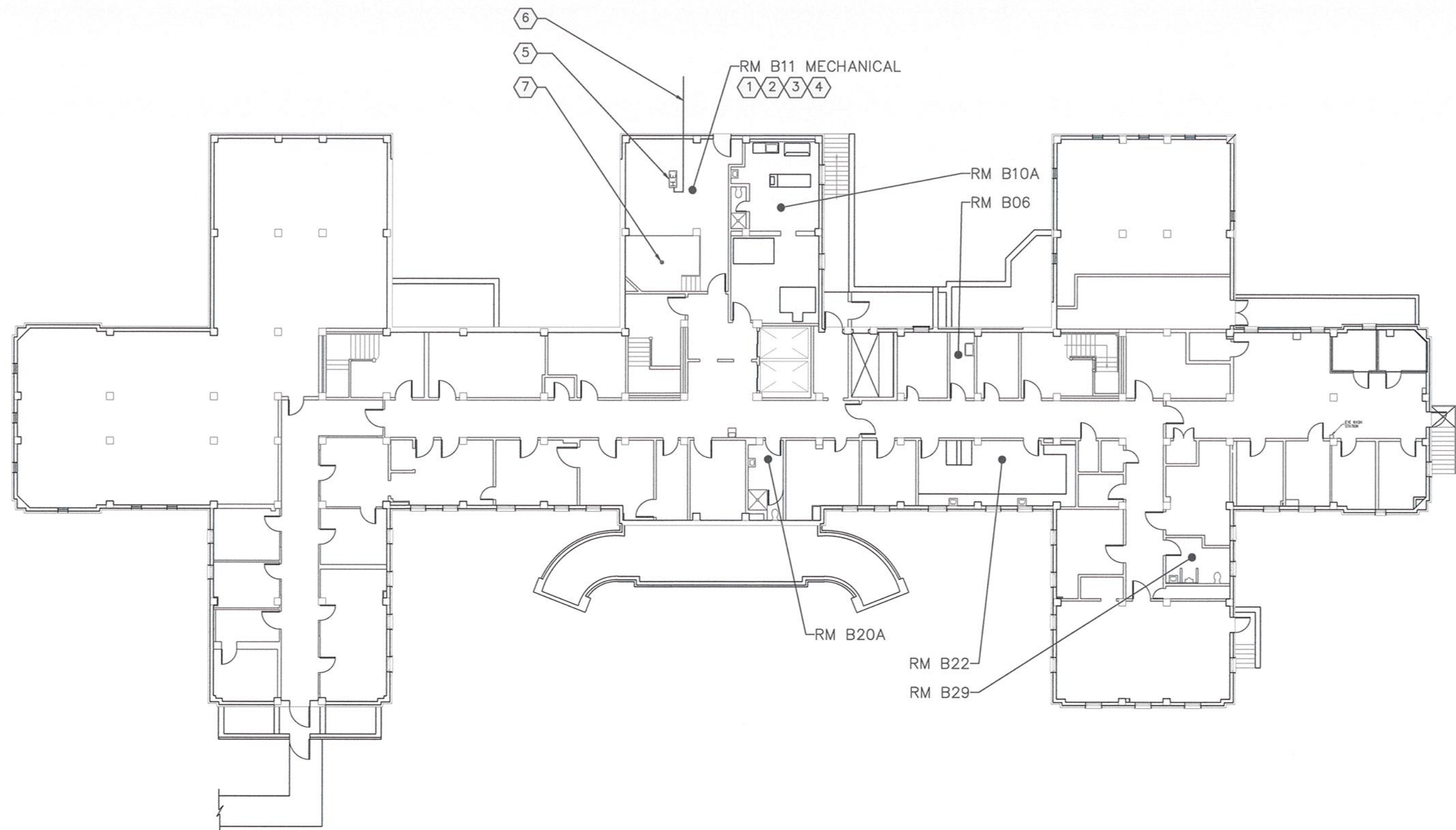
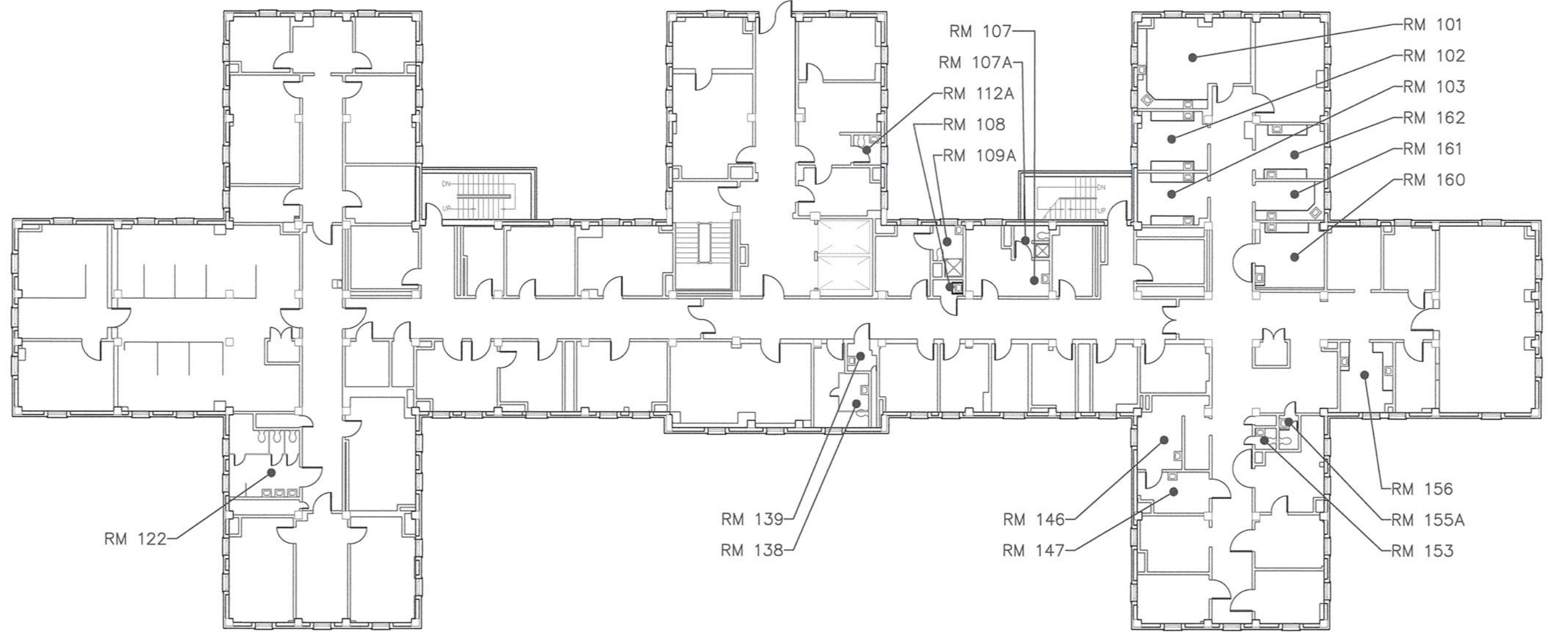


three eighths inch = one foot
one eighth inch = one foot
one quarter inch = one foot
one half inch = one foot
three quarters inch = one foot
one inch = one foot
one and one half inches = one foot
two inches = one foot
three inches = one foot

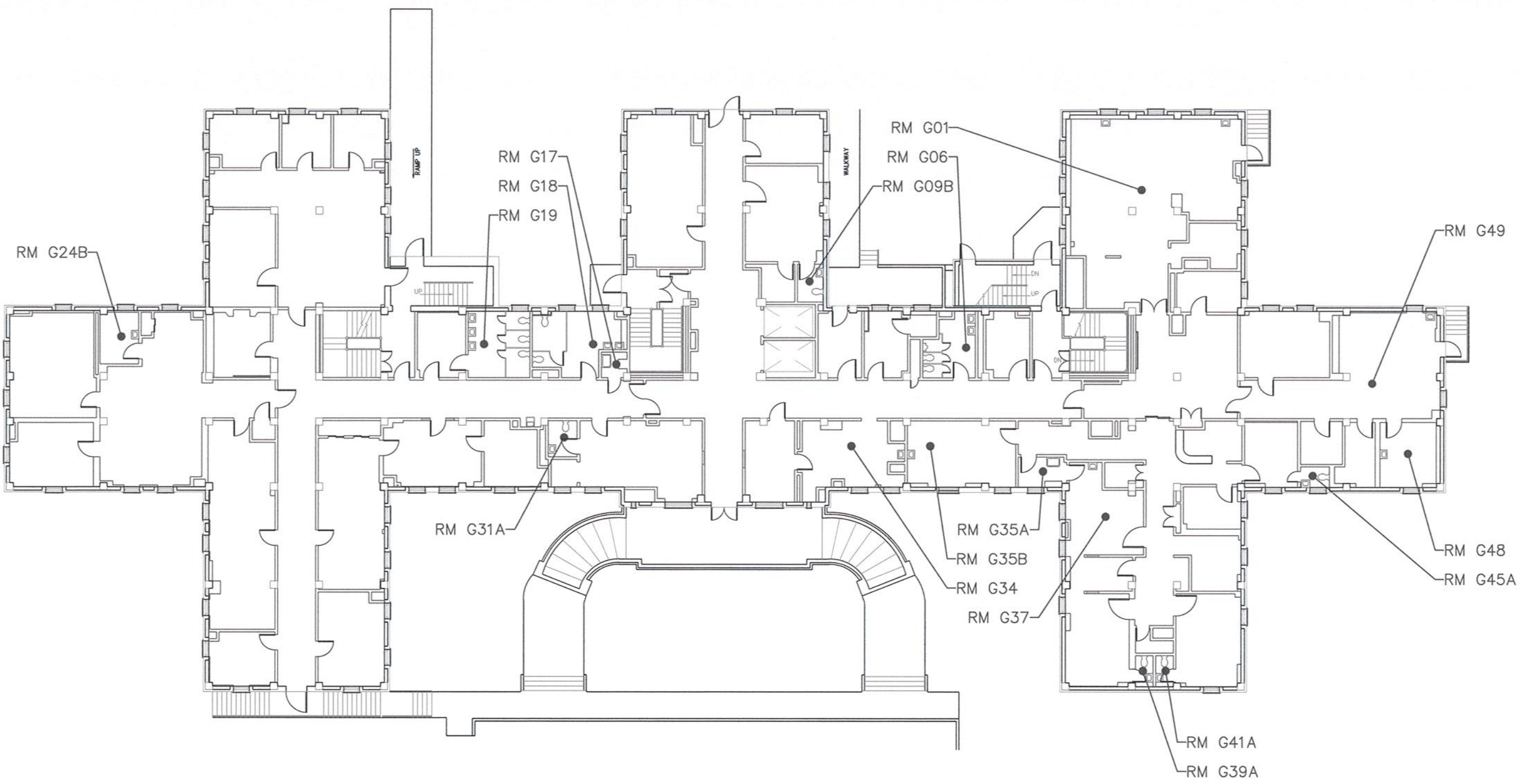
P:\Projects\VA - Coatesville PA Water Project\Drawings\Chemical & Scald\Sheets\P-1.dwg 4-22-15 03:01:45 PM DownD



BASEMENT



FIRST FLOOR



GROUND FLOOR

PLUMBING SCHEDULE						
Building No.	Floor	Location	Fixture (QTY)	Deck (In)	Fix. Code	Plumbing Note
1	Basement	B06 Housekeeping	Mop Sink, tub	8	-	12, 13
		B10A Morgue	Sink, side bowls	-	-	5
		B20A Bath	Shower	-	-	5
		B22 Laboratory	Sink, autopsy	4	-	5
		B29 Bath	Sink	4	F	
		G01 Chemistry Lab	Sink	-	A, B	
		G06 Men's	Shower	8	J	
		G09B	Sink, double	8	J	
		G17 Housekeeping	Sink	8	I	
		G18 Men's	Sinks (2)	4	K	
1	Ground	G19 Women's	Sinks (2)	8	J	6
		G24B Kitchen (HQ Offices)	Sinks (2)	8	J	
		G31A Unisex Bath	Sink	4	F	
		G34 Waiting	Sink	4	F	
		G35A Unisex Bath	Sink	4	F	
		G35B Break	Sink, kitchen	8	-	2
		G37 X-Ray Head & Chest	Sink	8	F	
		G39A Exam Bath	Sink	4	F	
		G41A X-Ray Bath	Sink	4	F	
		G45A Supervisor Bath	Sink	8	F	
		G48 Lab	Sink	4	F	
		G49 Lab	Sink, kitchen	8	I	
		101 Lab	Sinks (3)	8	-	12, 13
		102 Exam	Sinks (2)	-	H	
		103 Exam	Sinks (2)	-	H	
1	First	107 Medical on Duty	Sink	4	F	
		107A Medical on Duty Bath	Shower	-	A, B	
		108 Housekeeping	Mop Sink, tub	8	-	12, 13
		109A Men's Locker Bath	Sink	4	F	
		112 Admin Bath	Shower	-	A, B	
		122 Women's	Sink	4	E	
		138 Men's	Sinks (3)	8	J	3
		139 Housekeeping	Sink	8	J	3
		145 X-Ray	Mop Sink, tub	8	-	12, 13
		147 Dispatch & Holding	Sink, tub	8	L	
		153 Unisex Bath	Sink	-	L	
		153A Unisex Bath	Sink, high back	8	G	3
		155A Waiting Rm Unisex Bath	Sink	8	G	3
		156 Exam	Sinks (2)	-	L	
		160 Exam	Sinks (2)	-	L	
		161 Storage	Sinks (2)	-	H	
		162 Exam	Sinks (2)	-	H	
Building No.	Floor	Location	Fixture (QTY)	Deck (In)	Fix. Code	Plumbing Note

GENERAL NOTES:

- CONTRACTOR SHALL IMMEDIATELY NOTIFY COR AND ENGINEER UPON THE DISCOVERY OF BROKEN PIPE.
- CONTRACTOR SHALL FIELD VERIFY ALL EXISTING CONDITIONS PRIOR TO INSTALLATION.
- FIXTURE CODES CORRESPOND TO THE PLUMBING SCHEDULE ON SHEET G-3.
- DEFAULT FIXTURE QTY IS ONE (1). IF MULTIPLES OF THE SAME FIXTURE TYPE ARE LOCATED WITHIN ANY ROOM, QTY WILL BE LISTED IN PARENTHESES IN FIXTURE (QTY) COLUMN OF PLUMBING SCHEDULE. CONTRACTOR SHALL VERIFY ALL COUNTS.
- FOR FIXTURES WITH MULTIPLE FIXTURE CODES INDICATED, ALL LISTED FIXTURE CODES APPLY TO THAT FIXTURE. FOR FIXTURES WITH QTY>1, EACH FIXTURE WILL RECEIVE EACH FIXTURE CODE LISTED.
- CONTRACTOR SHALL REPLACE FULL STICK OF PIPE IF CORRODED OR IF PIPE SHOWS SIGNS OF MINERAL SCALING AT LOCATION OF NEW INSTALLATION.
- CONTRACTOR SHALL BE RESPONSIBLE FOR VERIFYING THE EXISTING PIPE SIZES AND MATERIALS PRIOR TO CONSTRUCTION.
- BUILDING WATER SERVICE TO REMAIN ACTIVE DURING CONSTRUCTION. CONTRACTOR SHALL EMPLOY MEANS AND METHODS NECESSARY TO KEEP BUILDING WATER SYSTEMS (HOT, COLD, FIRE PROTECTION) ACTIVE DURING THE INSTALLATION OF CHEMICAL MONITORING AND SCALD PROTECTION, UP TO AND INCLUDING TEMPORARY BYPASS PIPING AND CONNECTIONS IN ACCORDANCE WITH AWWA, FEDERAL, AND STATE/LOCAL DRINKING WATER STANDARDS.

CHEMICAL & TEMPERATURE MONITORING NOTES:

- CONNECT TEMPERATURE & PRESSURE GAUGE TO HOT WATER SUPPLY LINE, SEE DETAIL 4/D-1.
- CONNECT TEMPERATURE & PRESSURE GAUGE TO HOT WATER RETURN LINE, SEE DETAIL 4/D-1.
- CONNECT TEMPERATURE & PRESSURE GAUGE TO COLD WATER LINE, SEE DETAIL 4/D-1.
- CONNECT CHEMICAL MONITORING SYSTEM TO COLD WATER SUPPLY LINE, SEE DETAIL 3/D-1.
- EXISTING HEAT EXCHANGER.
- EXISTING DOMESTIC WATER SUPPLY LINE.
- EXISTING FLOOR DRAIN.

PLUMBING NOTES (PER PLUMBING SCHEDULE):

- NO ACTION REQUIRED BY CONTRACTOR.
- INSTALL TMV (FIXTURE "BB") UNDER SINK ONLY, IN ACCORDANCE WITH DETAIL 5/D-1.
- INSTALL TMV (FIXTURE "BB") IN CHASE AND RE-ROUTE/ RE-CONNECT PIPING AS NECESSARY TO PROVIDE TEMPERED WATER TO FIXTURE, SEE DETAIL 7/D-1.
- EXISTING TMV IN CHASE IS NOT CONNECTED TO THIS FIXTURE. CONTRACTOR SHALL REROUTE HOT WATER PIPING FROM FIXTURE TO CONNECT TO EXISTING TMV IN CHASE PER DETAIL 7/D-1.
- FIXTURE TO BE REMOVED IN ITS ENTIRETY AND NOT REPLACED. CUT AND CAP LINES AT FACE OF WALL.
- ROOM LOCKED/NOT ACCESSED DURING ENGINEERING ASSESSMENT - FIXTURE CODE IS ASSUMED BASED ON SIMILAR ROOMS THIS BUILDING/FLOOR. CONTRACTOR SHALL COORDINATE WITH COR FOR ACCESS TO ROOM FOR FIXTURE VERIFICATION PRIOR TO CONSTRUCTION. ("CLO." DENOTES SECURED COMMUNICATIONS ROOM WHICH REQUIRES SPECIAL SUPERVISED ACCESS.)
- FIXTURE BLOCKED/NOT ACCESSED DURING ENGINEERING ASSESSMENT - FIXTURE CODE IS ASSUMED BASED ON SIMILAR ROOMS THIS BUILDING/FLOOR. CONTRACTOR SHALL COORDINATE WITH COR FOR ACCESS TO ROOM FOR FIXTURE VERIFICATION PRIOR TO CONSTRUCTION.
- PROVIDE OPTIONAL DECK-MOUNTED SPRAYER (FOURTH HOLE), FIXTURE "H" MANUFACTURER'S OPTION.
- PROVIDE OPTIONAL TUB/SHOWER TRIM KIT WITH TUB DIVERTER SPOUT, FIXTURE "A" MANUFACTURER'S OPTION.
- EXISTING TMV. REPLACE FIXTURE ONLY.
- EXPOSED PIPE AT FIXTURE. CONTRACTOR SHALL FIELD VERIFY EXISTING CONDITIONS PRIOR TO CONSTRUCTION. ADDITIONAL PLUMBING MAY BE REQUIRED.
- INSTALL ANTISCALD DEVICE ONLY (FIXTURE "EE") - THREADED.
- INSTALL BRASS MALE/FEMALE ADAPTORS AS REQUIRED TO PROVIDE 3/4" MALE THREADED OUTLET AFTER ANTISCALD DEVICE.

CONSULTANTS:



5555 REDWOOD STREET, SUITE 201
LAS VEGAS, NV 89118
TEL (702) 697-2187 FAX (702) 697-2188
www.hei-eng.com



ENGINEERS:



S&B CHRIST CONSULTING, LLC
OPS RESEARCH & CIVIL/ENV ENGINEERING
8485 WEST SUNSET ROAD, SUITE 105
LAS VEGAS, NV 89113
OFFICE: (702) 202-6004
SBCHRISTCONSULTING.COM

Drawing Title

**BUILDING #1
KEY PLANS & FIXTURE SCHEDULE
(BASEMENT, GROUND, & FIRST FLOOR)**

Approved Project Director

APPROVED BY:
TITLE:
STATION:

Project Title

VAMC COATESVILLE
WATER SYSTEM CHEMICAL MONITORING &
SCALD PROTECTION

Location

VAMC COATESVILLE, PA

Date

2015 APR 22

Checked

BJC

Drawn

DMD

Project Number

542-13-115

Building Number

BUILDING #1

Drawing Number

P-1

Sht 6 of 41

Office of
Construction and
Facilities
Management

