

CODE ANALYSIS

OCCUPANCY GROUP: A, B, I-2
SPRINKLERED: YES
SQUARE FOOTAGE: 18,130
NUMBER OF STORIES: 1
SYSTEM TYPE: ADDRESSABLE

EDITION OF CODES:
2011 VA DESIGN MANUAL
2009 IBC/IFC
2007 NFPA 70
2010 NFPA 72
2009 NFPA 90
2009 NFPA 101

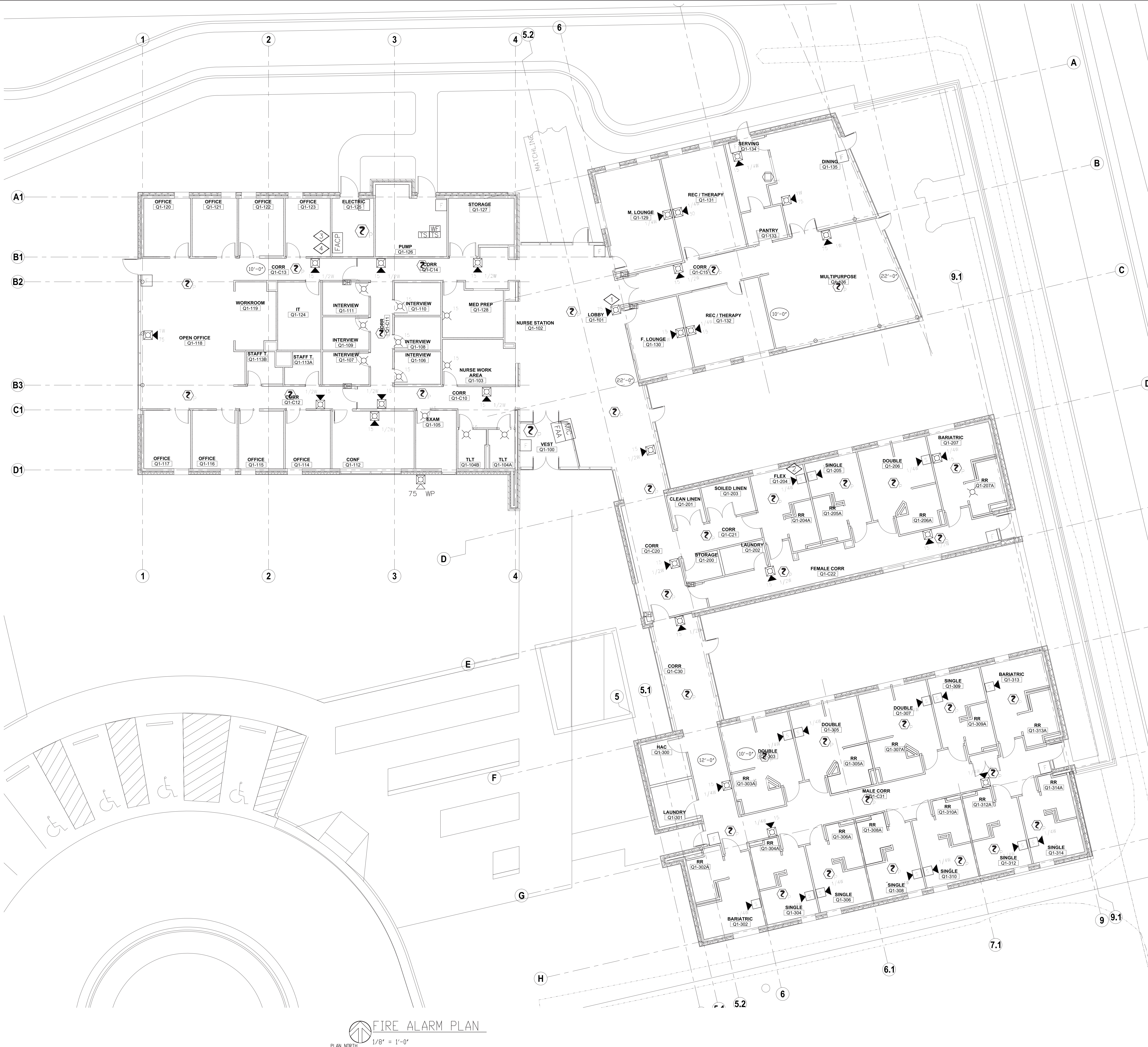
- FACP FIRE ALARM CONTROL PANEL
EVAC FIRE ALARM EVACUATION PANEL
NACP FIRE ALARM POWER SUPPLY
FAA FIRE ALARM REMOTE ANNUNCIATOR
MIC EVACUATION REMOTE MICROPHONE
SMOKE DETECTOR (PHOTOELECTRIC)
HEAT DETECTOR 135° TEMP
PULL STATION
DUCT DETECTOR
REMOTE TEST/RESET STATION
ADDRESSABLE RELAY MODULE
ADDRESSABLE INPUT MODULE
ADDRESSABLE OUTPUT MODULE
KITCHEN HOOD
WATERFLOW SWITCH
VALVE WITH TAMPER SWITCH
DOOR HOLDER
(NUMBER INDICATES WATTAGE SPEAKER WITH STROBE (LISTED FOR LOW FREQUENCY USE))
(NUMBER INDICATES WATTAGE SPEAKER WITH STROBE (NUMBER INDICATES CANDELA))
STROBE (NUMBER INDICATES CANDELA)
HORN WITH STROBE (NUMBER INDICATES CANDELA)
END OF LINE RESISTOR
FIRE DEPARTMENT CONNECTION

LEGEND
NFPA 170, 2012
SHOWS CEILING HEIGHT

BID NOTE:
THESE DRAWINGS ARE DIAGRAMMATIC ONLY. THE AWARDED CONTRACTOR SHALL BE RESPONSIBLE FOR PRODUCTION OF ALL SUBMITTAL DOCUMENTS AND OBTAINING ALL REQUIRED PERMITS AND APPROVALS. THE AWARDED CONTRACTOR SHALL BE RESPONSIBLE FOR ANY REQUIRED OFFSETS OF SPRINKLER PIPING AS NEEDED FOR ONSITE COORDINATION WITH OTHER TRADES.

KEY NOTES

- SPEAKER/STROBES SHALL BE PROVIDED IN COMMON AREAS.
- LOW FREQUENCY LISTED SPEAKERS SHALL BE PROVIDED IN SLEEPING ROOMS.
- AUDIO EVACUATION SYSTEM SHALL BE LISTED FOR LOW FREQUENCY OPERATION.
- 520 HZ TONE TEMPORAL THREE PATTERN SHALL BE UTILIZED.



FIRE ALARM PLAN
PLAN NORTH 1/8" = 1'-0"

No.	Description	Date
0	35% NOT FOR CONST.	07.07.16
1	65% NOT FOR CONST.	08.18.16

ARCHITECTS/ENGINEERS:
VALHALLA ENGINEERING GROUP, LLC
10333 Dry Creek Road
Suite 200
Englewood, CO 80112
(303) 246-2488
valhallaengineering.com

CONSULTANTS:
HOEFER WYSOCKI
Architecture
11480 Tomahawk Creek Parkway, Suite 400
Leawood, Kansas 66211
(913) 307-3700
hoeferwysocki.com

VERITAS
FIRE ENGINEERING, INC.
12364 W Alameda Pkwy, #135
Lakewood, CO 80228
303.985.3300
veritasfire.com



VISN 19: ROCKY MOUNTAIN NETWORK
EASTERN COLORADO
HEALTHCARE SYSTEM

Drawing Title:
FIRST FLOOR FIRE ALARM PLAN
Scale: 1/8" = 1'-0"
Approved:

Project Title:
VA PTSD TREATMENT FACILITY - AURORA
Building Number: 00
Location: N Wheeling St. & E 19th Pl.
Aurora, CO 80011

Date: 12/07/2016
Project No.: 2000.01
Drawing No.: REV
FA-1 .0
Sheet Of

U.S. Department of Veterans Affairs

three eighths inch = one foot
one eighth inch = one foot
one quarter inch = one foot
three eighths inch = one foot
one half inch = one foot
one inch = one foot
one and one half inches = one foot
two inches = one foot
three inches = one foot

- FACP

FIRE ALARM CONTROL PANEL
- EVAC

FIRE ALARM EVACUATION PANEL
- NACP

FIRE ALARM POWER SUPPLY
- FAA

FIRE ALARM REMOTE ANNUNCIATOR
- MIC

EVACUATION REMOTE MICROPHONE
- 2

SMOKE DETECTOR (PHOTOELECTRIC)
- 135

HEAT DETECTOR 135° TEMP
- PULL STATION
- 2

DUCT DETECTOR
- 15

REMOTE TEST/RESET STATION
- 10

ADDRESSABLE RELAY MODULE
- 10

ADDRESSABLE INPUT MODULE
- 10

ADDRESSABLE OUTPUT MODULE
- 10

KITCHEN HOOD
- 10

WATERFLOW SWITCH
- 10

VALVE WITH TAMPER SWITCH
- 10

DOOR HOLDER
- 1/4W

(NUMBER INDICATES WATTAGE
SPEAKER WITH STROBE
(LISTED FOR LOW FREQUENCY USE)
- 1/4W

(NUMBER INDICATES WATTAGE
SPEAKER WITH STROBE
(NUMBER INDICATES CANDELA)
- 15

STROBE
(NUMBER INDICATES CANDELA)
- 1/75

HORN WITH STROBE
(NUMBER INDICATES CANDELA)
- EOL

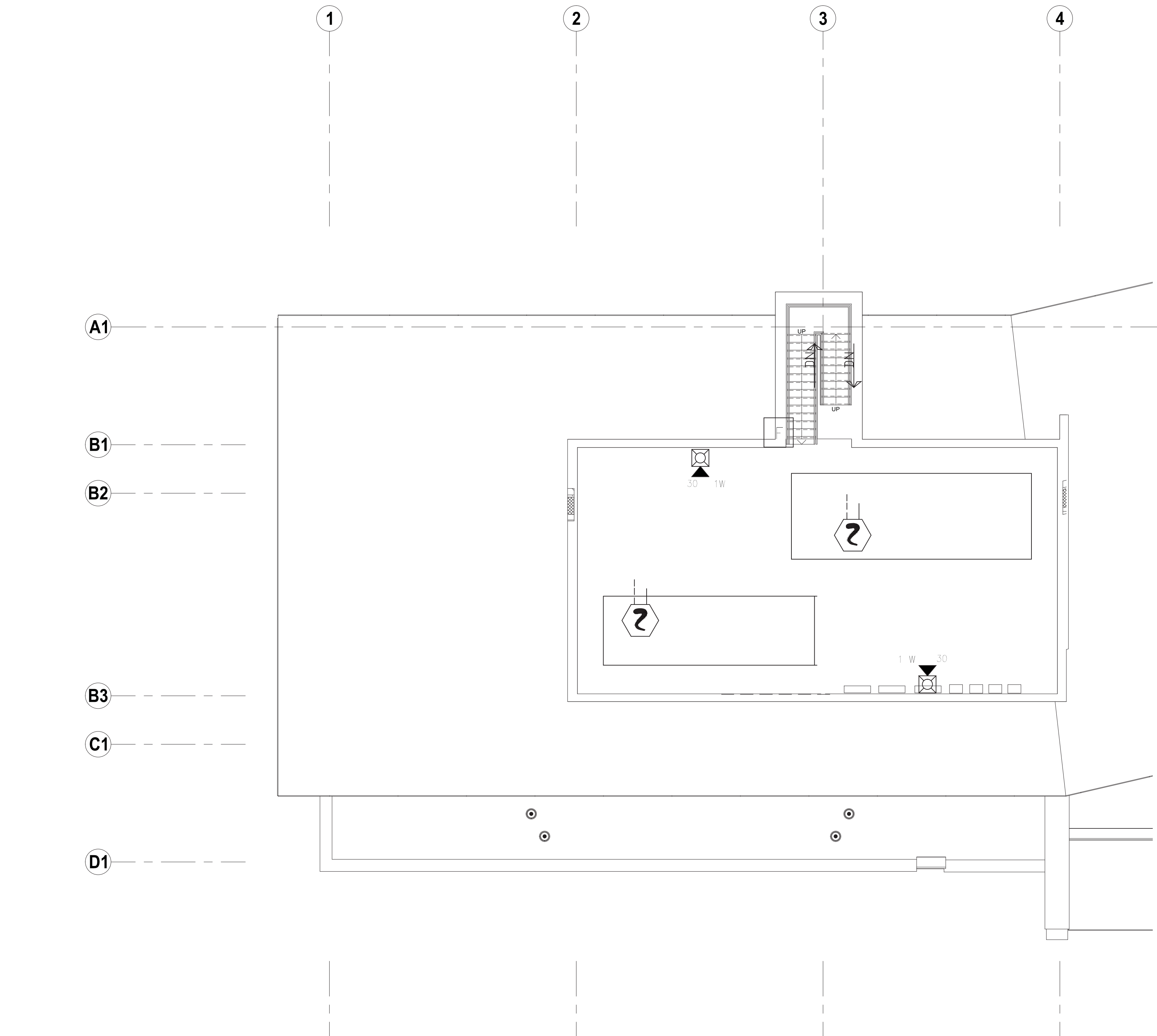
END OF LINE RESISTOR
- FIRE DEPARTMENT CONNECTION

LEGEND

NFPA 170-2012

12'-0"

SHOWS CEILING HEIGHT



UPPER MECH ROOM FIRE ALARM PLAN
1/8" = 1'-0"
PLAN NORTH

System Inputs												Control Panel Annunciation	Notification	Safety Control
Manual Pull Station	X	X										X	X	X
Area Smoke Detector	X	X										X	X	X
Point Smoke Detector	X	X										X	X	X
Water Flow Switch	X	X										X	X	X
Sprinkler Tamper Switch	X	X										X	X	X
Ground Fault			X	X								X	X	X
Open Circuit			X	X								X	X	X
Notification Appliance Short Circuit			X	X								X	X	X
Low Battery			X	X								X	X	X
AC Power Failure (1 Hour Delay)			X	X								X	X	X
Telephone Line Fault			X	X								X	X	X
Silence Feature at FACP					X							X	X	X

SEQUENCE OF OPERATIONS

No.	Description	Date
0	35% NOT FOR CONST.	07.07.16
1	65% NOT FOR CONST.	08.18.16

ARCHITECTS/ENGINEERS:

**VALHALLA
ENGINEERING
GROUP, LLC**

10363 Dry Creek Road
Suite 200
Englewood, CO 80112
(303) 246-2488
valhallaengineering.com

CONSULTANTS:

**HOEFER WYSOCKI
Architects**

11460 Tomahawk Creek Parkway, Suite 400
Leawood, Kansas 66211
(913) 307-3700
hoeflerwysocki.com

**VERITAS
FIRE ENGINEERING, INC.**

12364 W Alameda Pkwy, #135
Lakewood Colo. 80228
303.985.3300
veritasfire.com

**VISN 19: ROCKY MOUNTAIN NETWORK
EASTERN COLORADO
HEALTHCARE SYSTEM**

Drawing Title:
**PENTHOUSE FIRE
ALARM PLAN**

Scale: **1/8" = 1'-0"**

Approved:

Project Title:
**VA PTSD TREATMENT
FACILITY - AURORA**

Building Number: **00** Checked by: **KLM** Drawn by: **RwL**

Location: **N Wheeling St. & E 19th Pl.
Aurora, CO 80011**

Date: **12/07/2016**

Project No.: **2000.01**

Drawing No.: **FA-2** REV **0**

Sheet **Of**

VA U.S. Department of Veterans Affairs

