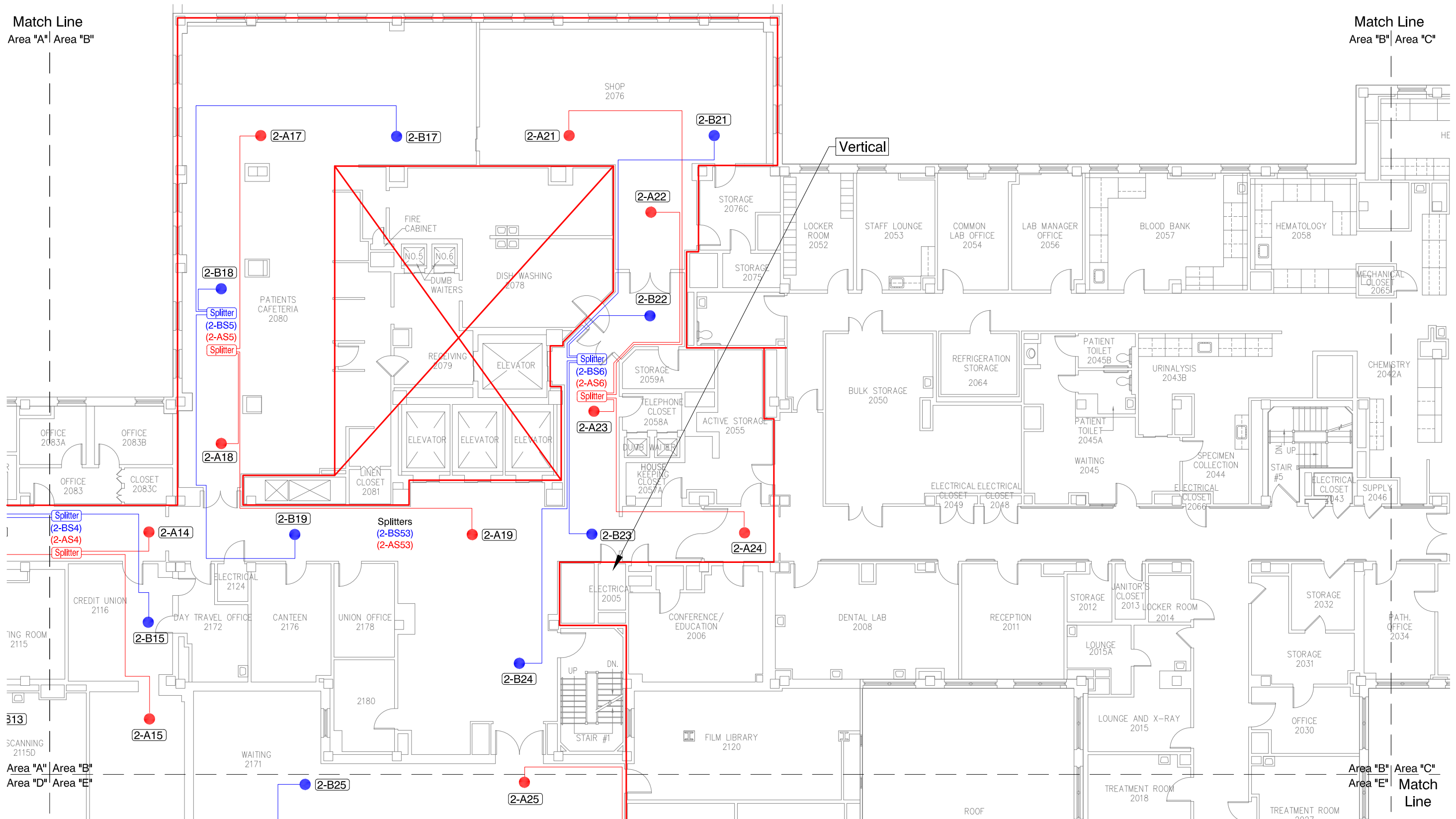


Match Line
Area "A" | Area "B"

Match Line
Area "A" | Area "B"

Match Line
Area "B" | Area "C"



NIHON KOHDEN

Phone: (800) 325-0283 - (949) 580-1555

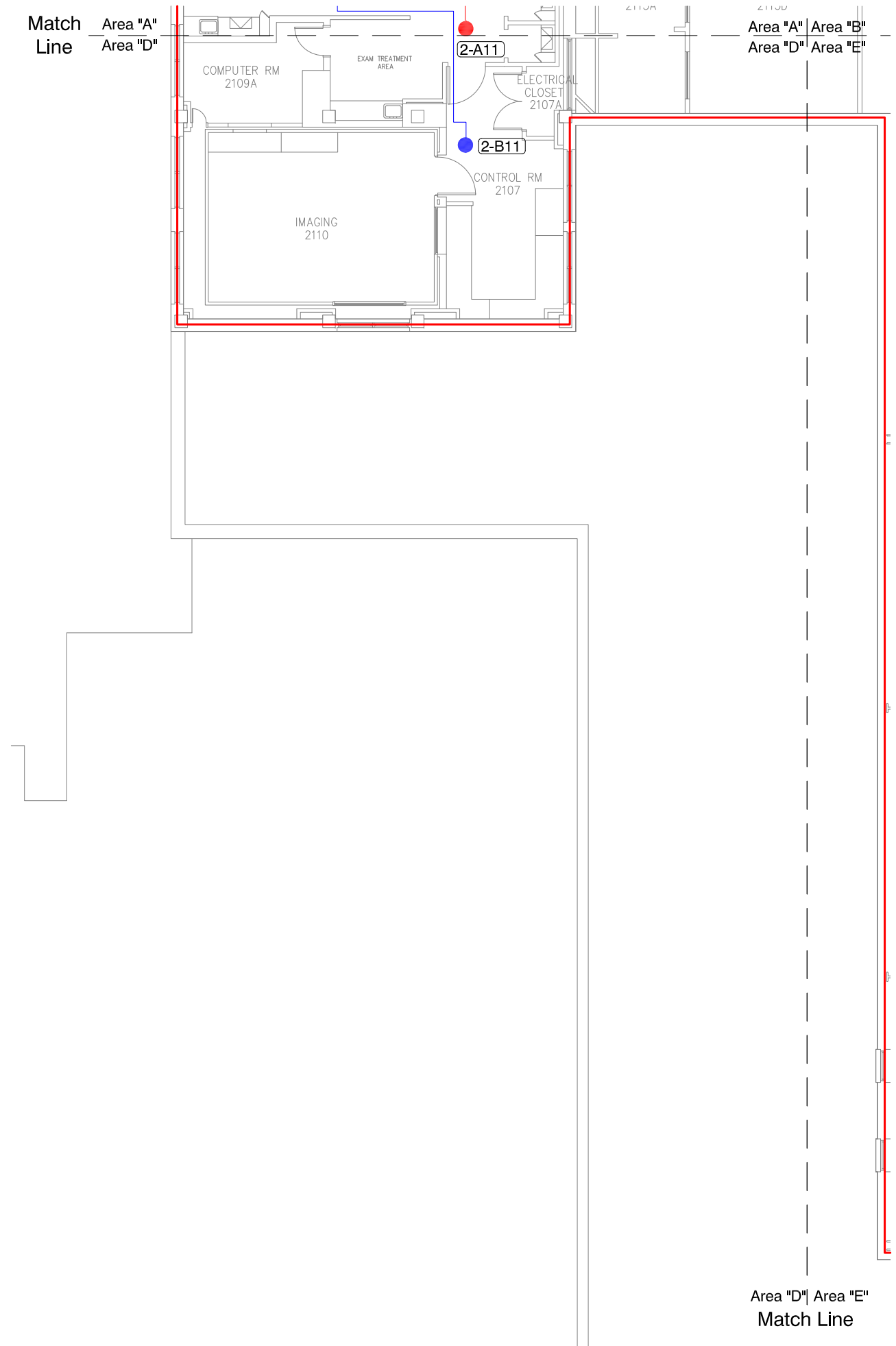
VA Medical Center
Wilmington, DE

[illegible]Designed By:
 Mihon Kohden Design
 Planning Dept.

Date: 10/26/16

2nd Floor
Area "B"

WMTS



15353 Barranca Parkway - Irvine, CA 92618
Phone: (800) 325-0283 - (949) 580-1555

VA Medical Center
Wilmington, DE

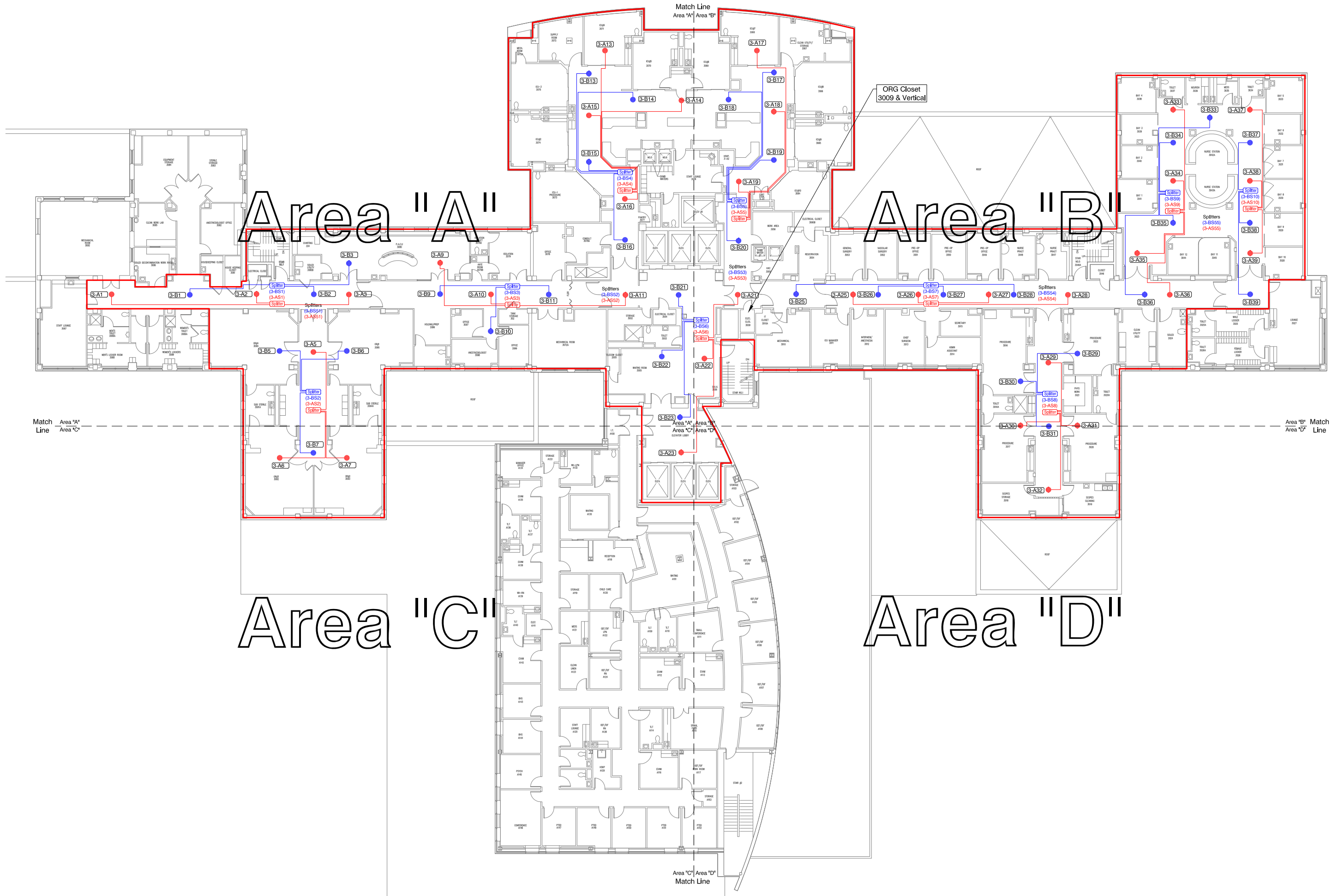
Note: Any changes or modifications to this design must be approved in writing by the Nihon Kohden Design Planning Department.

Designed By:
Nihon Kohden Design
Planning Dept.

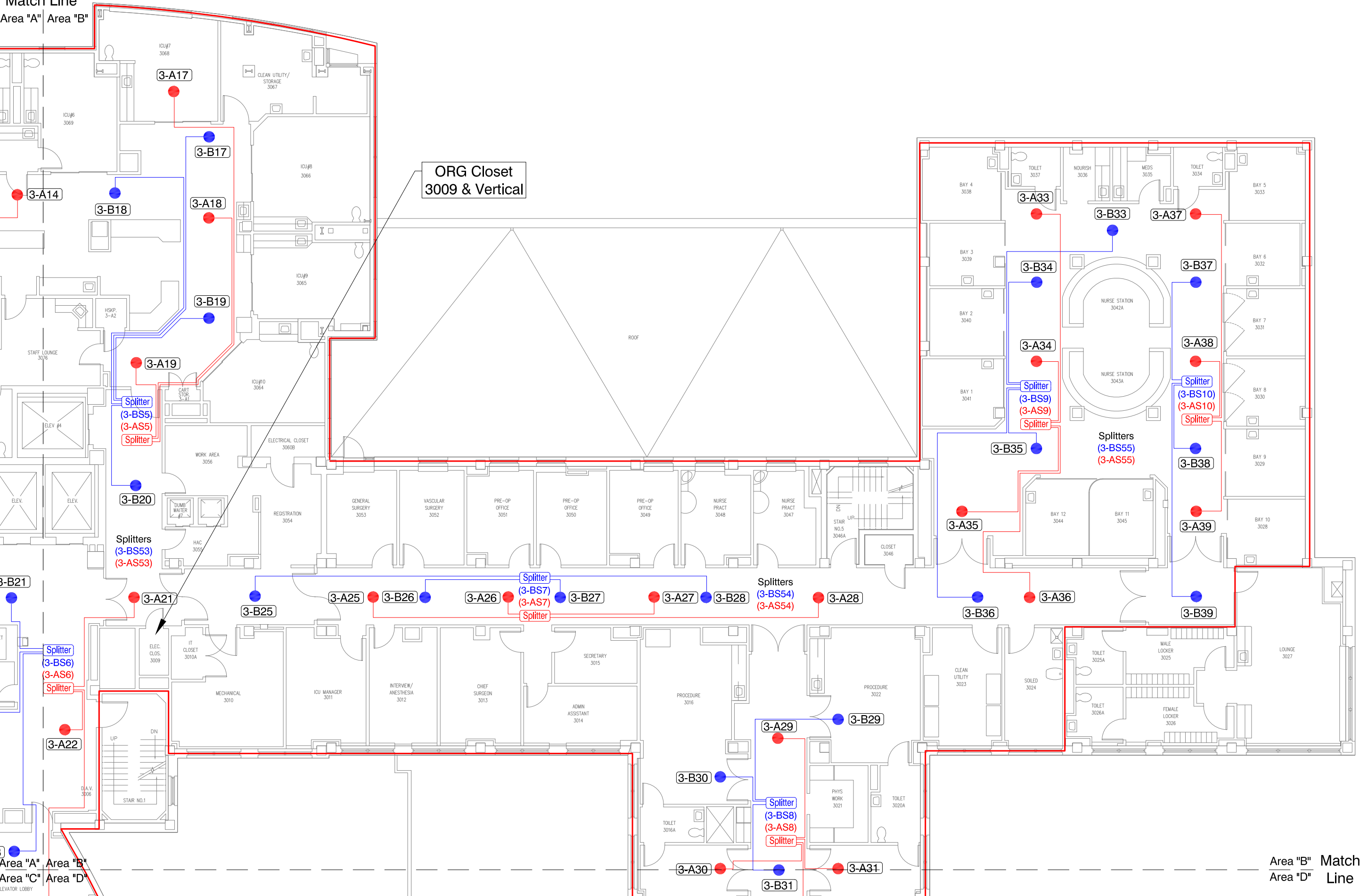
Date: 10/26/16

2nd Floor
Area "D"

WMTS

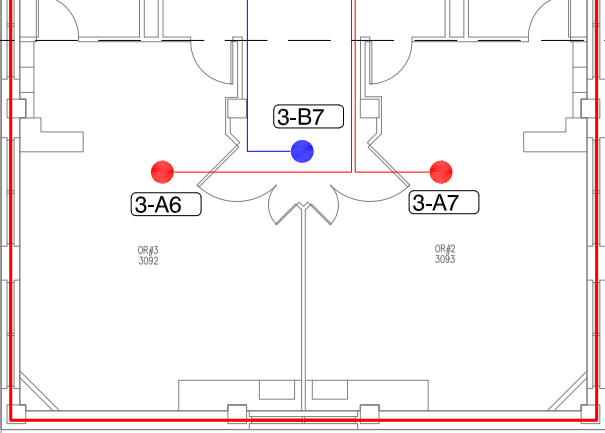


Match Line
Area "A" Area "B"



Match
Line

Area "A"
Area "C"



Area "C" | Area "D"
Match Line



15353 Barranca Parkway - Irvine, CA 92618
Phone: (800) 325-0283 - (949) 580-1555

VA Medical Center
Wilmington, DE

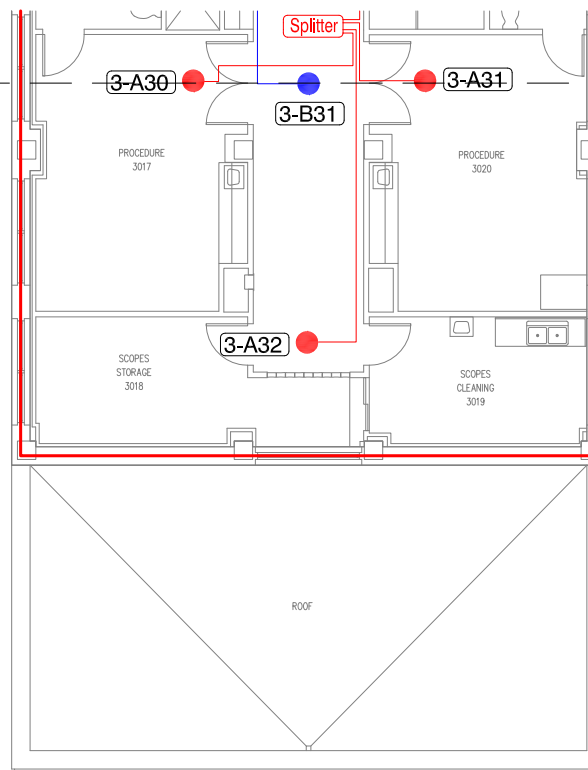
Note: Any changes or modifications to this design must be approved in writing by the Nihon Kohden Design Planning Department.

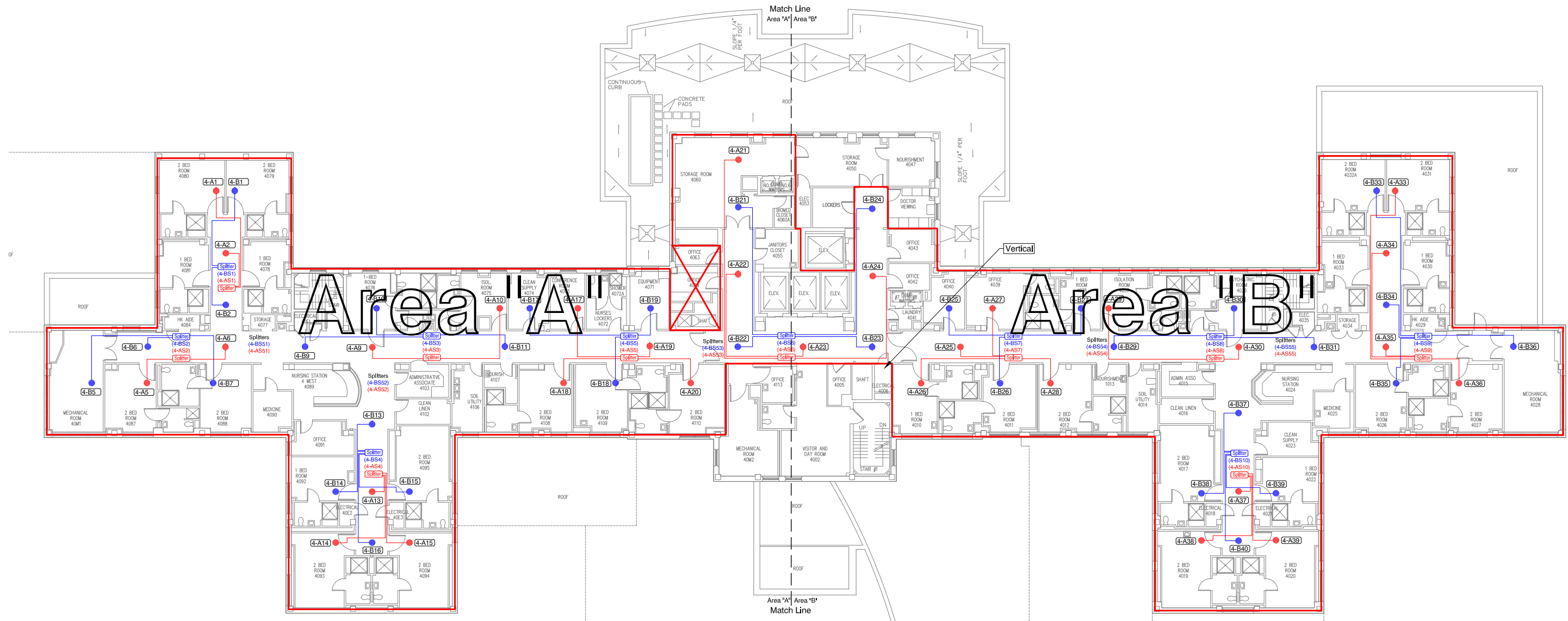
Designed By:
Nihon Kohden Design
Planning Dept.

Date: 11/07/16

3rd Floor
Area "C"

WMTS





VA Medical Center
Wilmington, DE

Designed By:
Nihon Kohden Design
Planning Dept.

Date: 10/27/16

4th Floor
Entire Floor

WMTS

