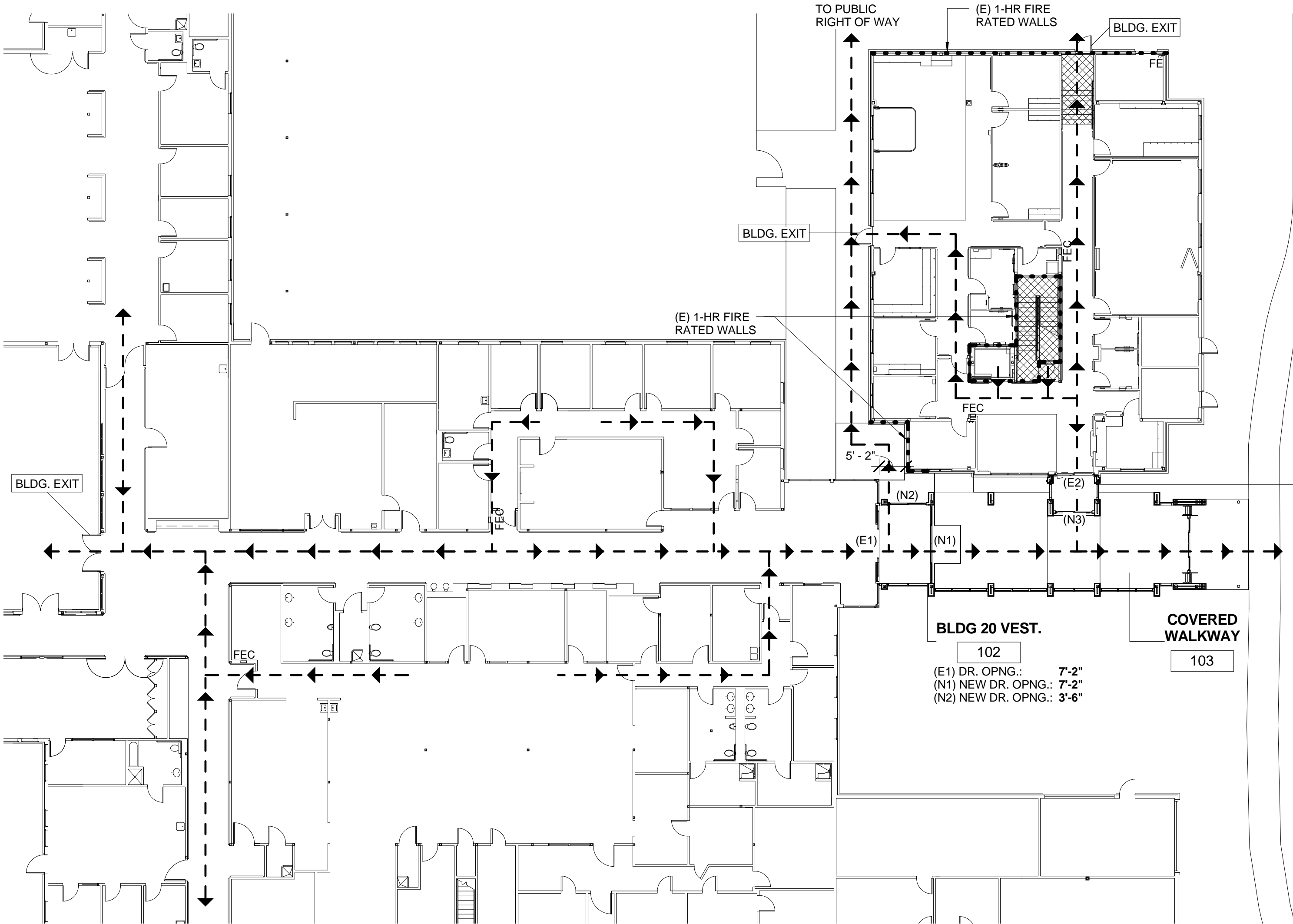


three inches = one foot
one and one half inches = one foot
one inch = one foot
three quarters inch = one foot
one half inch = one foot
three eighths inch = one foot
one eighth inch = one foot
one quarter inch = one foot

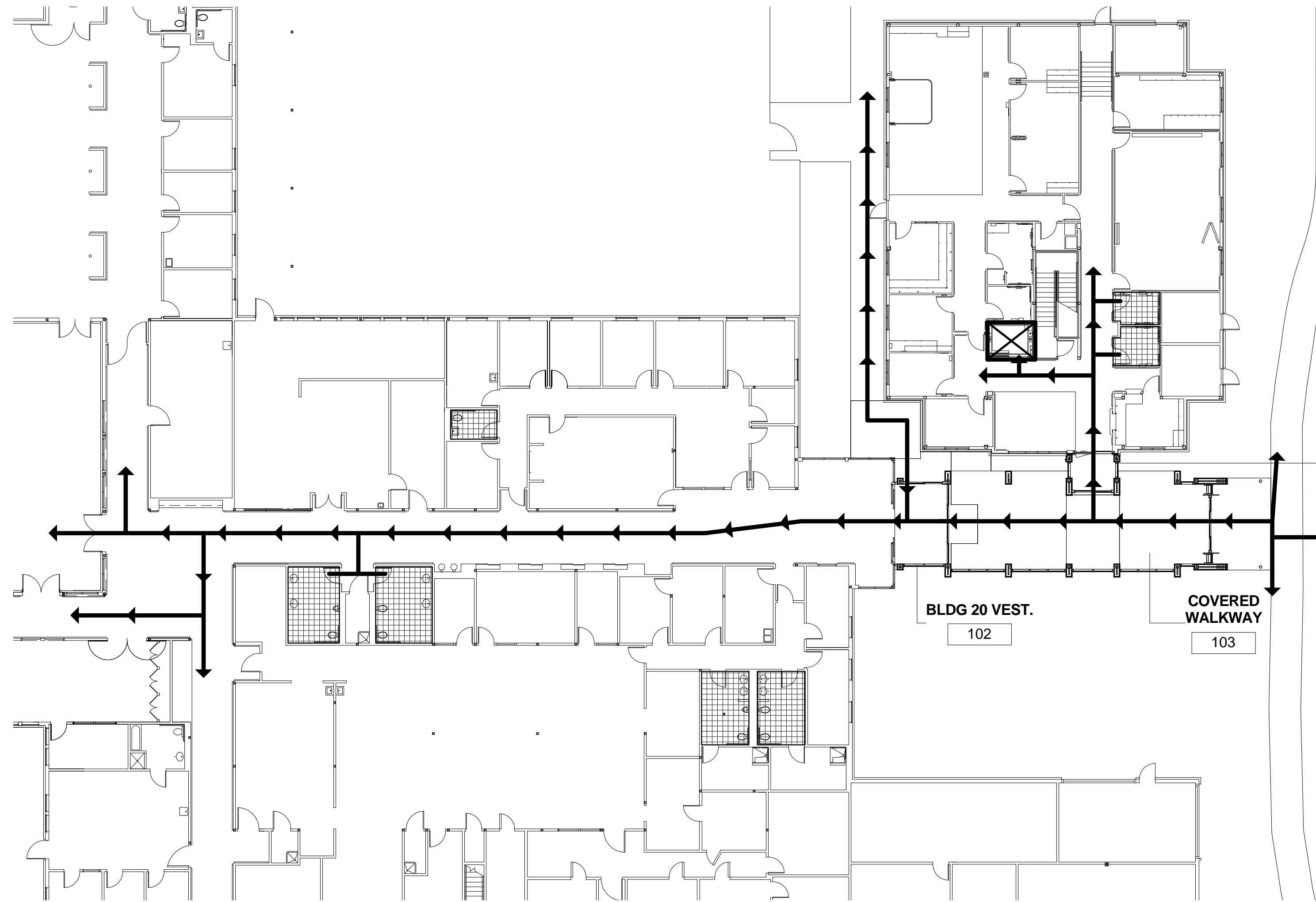


LIFE SAFETY LEGEND

- EXIT DIRECTION
- EXIT PATH
- 1-HR FIRE RESISTIVE RATED PARTITION
- PROTECTED VERTICAL EXIT
- FEC FIRE EXTINGUISHER CABINET
- FE FIRE EXTINGUISHER
- ROOM NUMBER

BUILDING OCCUPANCY TYPES AND INFORMATION

BUILDING 22:			
DATE OF CONSTRUCTION:	2008		
BASED ON:	2006 IBC & NFPA 101		
CONSTRUCTION TYPE:	TYPE IIB		
OCCUPANCY TYPE:	TYPE B		
SPRINKLERED:	FULLY		
BUILDING 20:			
DATE OF CONSTRUCTION:	1996		
BASED ON:	1996 NFPA 101 & 220		
CONSTRUCTION TYPE:	TYPE II		
OCCUPANCY TYPE:	I-2/B		
SPRINKLERED:	FULLY		
2006 IBC & 2009 NFPA 101 EQUIVALENCY :		CONSTRUCTION TYPE:	TYPE IA
		OCCUPANCY:	TYPE I-2
NEW ENTRANCE VESTIBULES AND COVERED WALKWAY:			
DATE OF DESIGN	2010-11		
BASED ON:	2006 IBC & NFPA 101		
CONSTRUCTION TYPE:	BLDG 22 VEST.: TYPE IIB		
	BLDG 20 VEST.: TYPE IIB		
OCCUPANCY TYPE:	BLDG 22 VEST.: TYPE B		
	BLDG 20 VEST.: TYPE I-2		
	COVERED WALKWAY: N/A		
SPRINKLERED:	FULLY (INCL. COVERED WALKWAY)		
NECESSARY FIRE RATING:	1-HOUR SEPERATION BETWEEN TYPE B AND TYPE I-2 CONSTRUCTION WITHIN 10'-0" PROXIMITY		



ACCESSIBILITY LEGEND

- ACCESSIBLE PATH
- ROOM NUMBER
- ELEVATOR
- ACCESSIBLE WC

1 ACCESSIBILITY PLAN

CONSULTANTS:

STRUCTURAL E&A ENGINEERS. 20505 E. VALLEY BLVD. SUITE 110 WALNUT, CA 91789-2705 TEL: (909) 598-5045 FAX: (909) 598-8585	MECHANICAL & PLUMBING SJ ENGINEERS 300 FRANK OGAWA PLAZA, SUITE 308, OAKLAND, CA 94612 TEL: (510) 832-1505 FAX: (510) 832-1507	ELECTRICAL FWA INC. 330 FRANKLIN STREET, OAKLAND, CA 94612 TEL: (510) 763-7475 FAX: (510) 763-7033
---	--	--

ARCHITECT/ENGINEERS:

MEI
architecture + interiors

239 9TH STREET, Suite 201
SAN FRANCISCO, CA 94103
T: (415) 882-7376
F: (415) 882-7339
www.meiarchitects.com

REGISTERED ARCHITECT
MEI-MEI CHAN
C-29390
RENEWAL DATE
DATE OF CALIFORNIA

Drawing Title
LIFE SAFETY AND ACCESSIBILITY PLANS

Approved: Project Director

Project Title
ENTRANCE VESTIBULES AND COVERED WALKWAY AT BLDGS. 20 AND 22

Location
VANCHCS - MARTINEZ

Date JUNE 10, 2011	Checked MMC	Drawn KS
-----------------------	----------------	-------------

Project Number
612-10-066

Building Number
BLDGS. 20 & 22

Drawing Number
G0-3

Office of Facilities Management

Department of Veterans Affairs