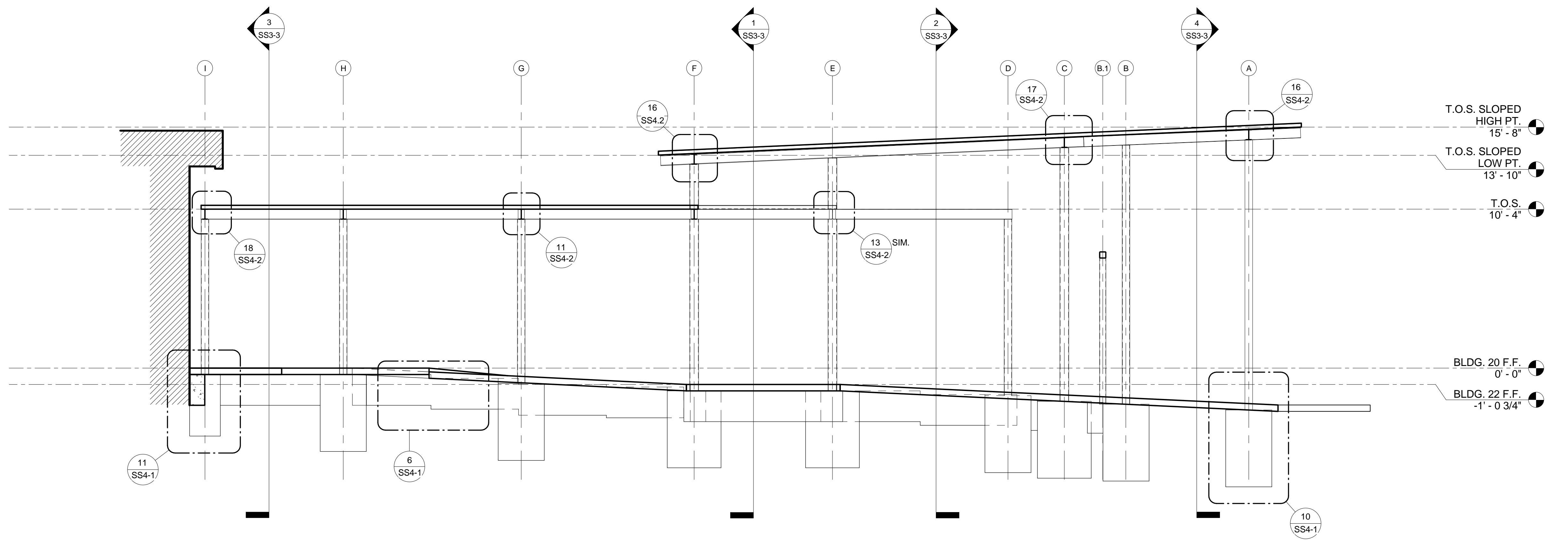
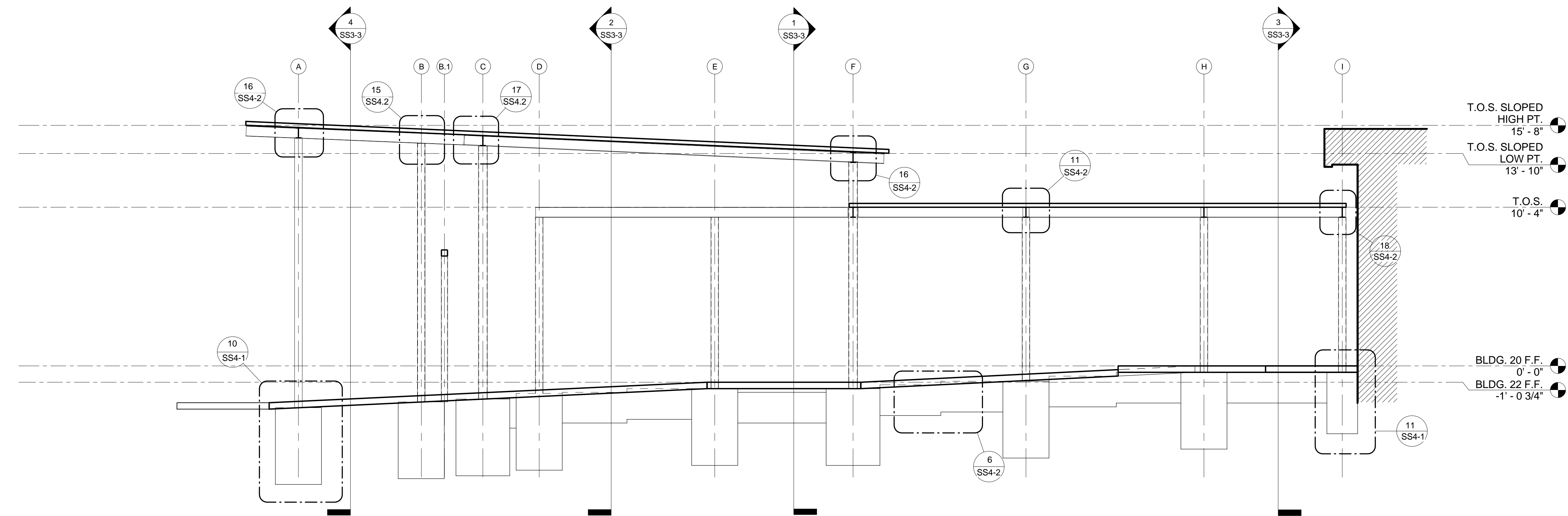


three inches = one foot
one and one half inches = one foot
one inch = one foot
three quarters inch = one foot
one half inch = one foot
three eighths inch = one foot
one quarter inch = one foot
one eighth inch = one foot



2 SECTION B (BLDG. 20 VEST.)
1/4" = 1'-0"



1 SECTION A (BLDG. 20 VEST.)
1/4" = 1'-0"

CONSTRUCTION DOCUMENTS BID SET	06.10.2011
Revisions:	Date

CONSULTANTS:		
STRUCTURAL E&A ENGINEERS 20505 E. VALLEY BLVD. SUITE 110 WALNUT, CA 91789-2705 TEL: (909) 598-5045 FAX: (909) 598-8585	MECHANICAL & PLUMBING SJ ENGINEERS 300 FRANK OGAWA PLAZA, SUITE 308, OAKLAND, CA 94612 TEL: (510) 832-1505 FAX: (510) 832-1507	ELECTRICAL FWA INC. 330 FRANKLIN STREET, OAKLAND, CA 94612 TEL: (510) 763-7475 FAX: (510) 763-7033

ARCHITECT/ENGINEERS:

MEI
architecture + interiors

239 9TH STREET, Suite 201
SAN FRANCISCO, CA 94103
T: (415) 682-7376
F: (415) 682-7339
www.meiarchitects.com

11.30.11
RENEWAL DATE

SEAL OF ARCHITECT
MEI-MEI GHAN
C-29950
DATE OF CALIFORNIA

Drawing Title SECTIONS (BLDG. 20 VEST.)
Approved: Project Director

Project Title ENTRANCE VESTIBULES AND COVERED WALKWAY AT BLDGS. 20 AND 22
Location VANCHCS - MARTINEZ
Date JUNE 10, 2011
Checked GVE
Drawn CEL

Project Number 612-10-066
Building Number BLDGS. 20 & 22
Drawing Number SS3-2

Office of Facilities Management

Department of Veterans Affairs