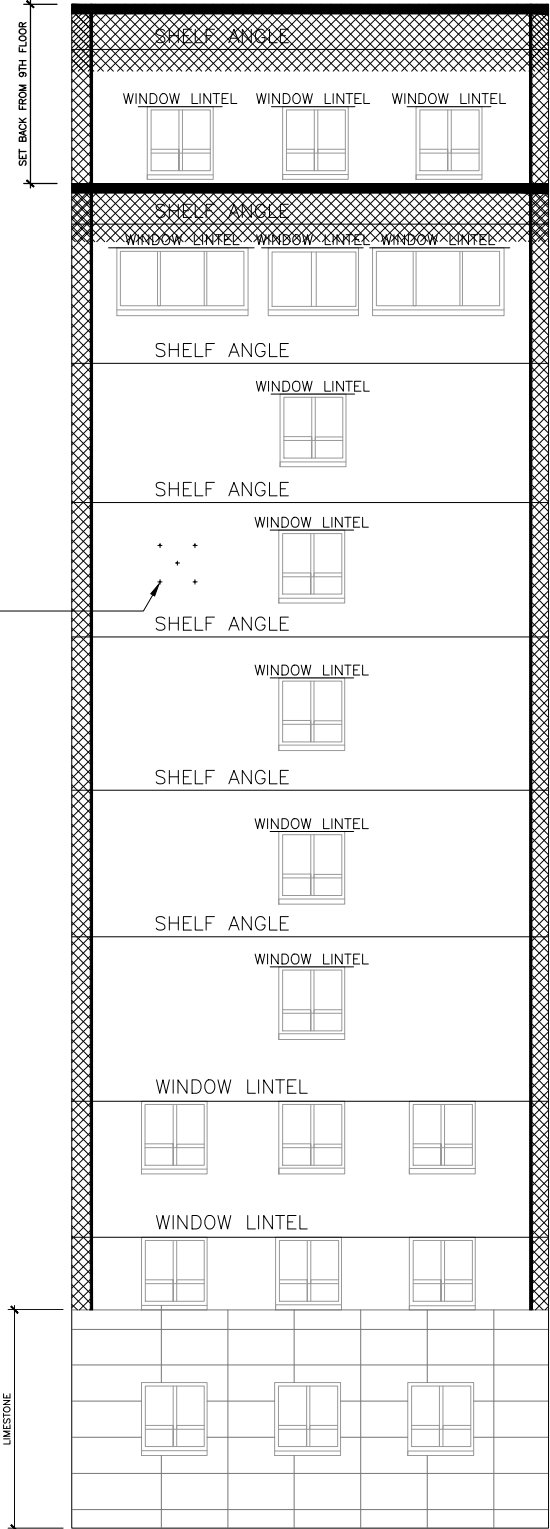


- NEW BRICK
- NEW SHELF ANGLE & FLASHING
- NEW LINTEL & FLASHING
- CONCRETE REPAIRS
- HELIFIX
- NEW CONTROL JOINTS
- NEW LIMESTONE

SEE SECTION 00300 - ESTIMATED QUANTITIES

TYPICAL HELIFIX PATTERN
SEE 3/R-5

VERIFY DIMENSIONS IN FIELD



1 EAST ELEVATION AFTER REPAIRS - PHASE 5
APPROX 1/8"=1'



2 EXISTING EAST ELEVATION - PHASE 5
APPROX 1/8"=1'

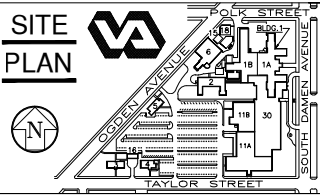
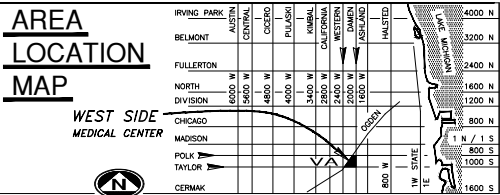
Revisions	Date
9	
8	
7	
6	
5	
4	
3	100% COMPLETION 2/28/12
2	95% COMPLETION 2/15/12
1	25% COMPLETION 1/26/12

FREGA ASSOCIATES, LTD.
ARCHITECTS/ENGINEERS/PLANNERS

WJE
ENGINEERS
ARCHITECTS
MATERIALS SCIENTISTS

Wiss, Janney, Elstner Associates, Inc.
330 Pfingsten Road
Northbrook, Illinois 60062
847.272.7400 tel | 847.291.5189 fax
www.wja.com

Headquarters & Laboratories: Northbrook, Illinois
Atlanta | Austin | Boston | Chicago | Cleveland | Dallas | Denver | Detroit
Honolulu | Houston | Los Angeles | Minneapolis | New Haven | New York
Princeton | San Francisco | Seattle | Washington, D.C.



Drawing Title	
BUILDING 1 ELEVATION AREA OF WORK	
Approved: Chief of Engineering	Date
Approved: Director	Date

Project Title	
PHASE 5,7,8 V.A. CHICAGO Medical Center	
Building Number & Floor BUILDING 1 ALL FLOORS	Checked JEP
Location 820 S. DAMEN Ave. CHICAGO IL - 60612	Drawn EJK

Date
02.28.2012
Project No.
JB-537-12-116
Drawing No.
R-2-P5
Page
2 of 11

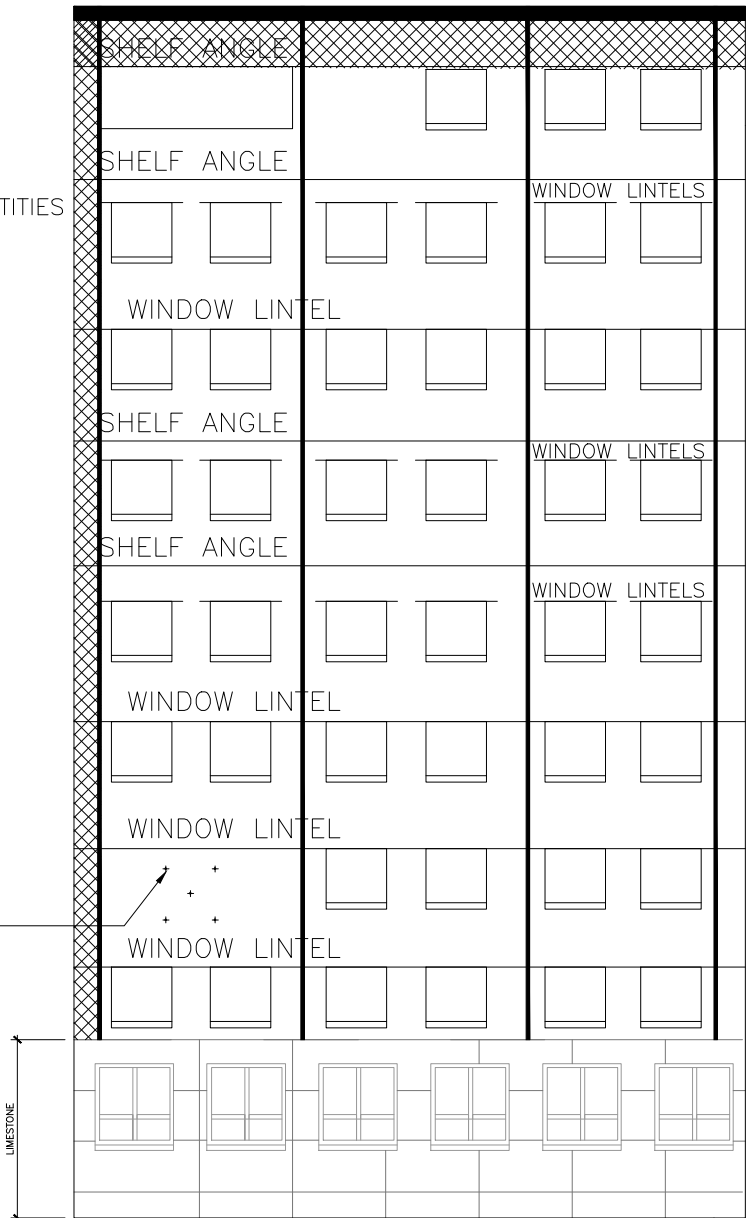
DEPARTMENT OF
VETERANS AFFAIRS

- NEW BRICK
- NEW SHELF ANGLE & FLASHING
- NEW LINTEL & FLASHING
- CONCRETE REPAIRS
- HELIFIX
- NEW CONTROL JOINTS
- NEW LIMESTONE

SEE SECTION 00300 - ESTIMATED QUANTITIES

VERIFY DIMENSIONS IN FIELD

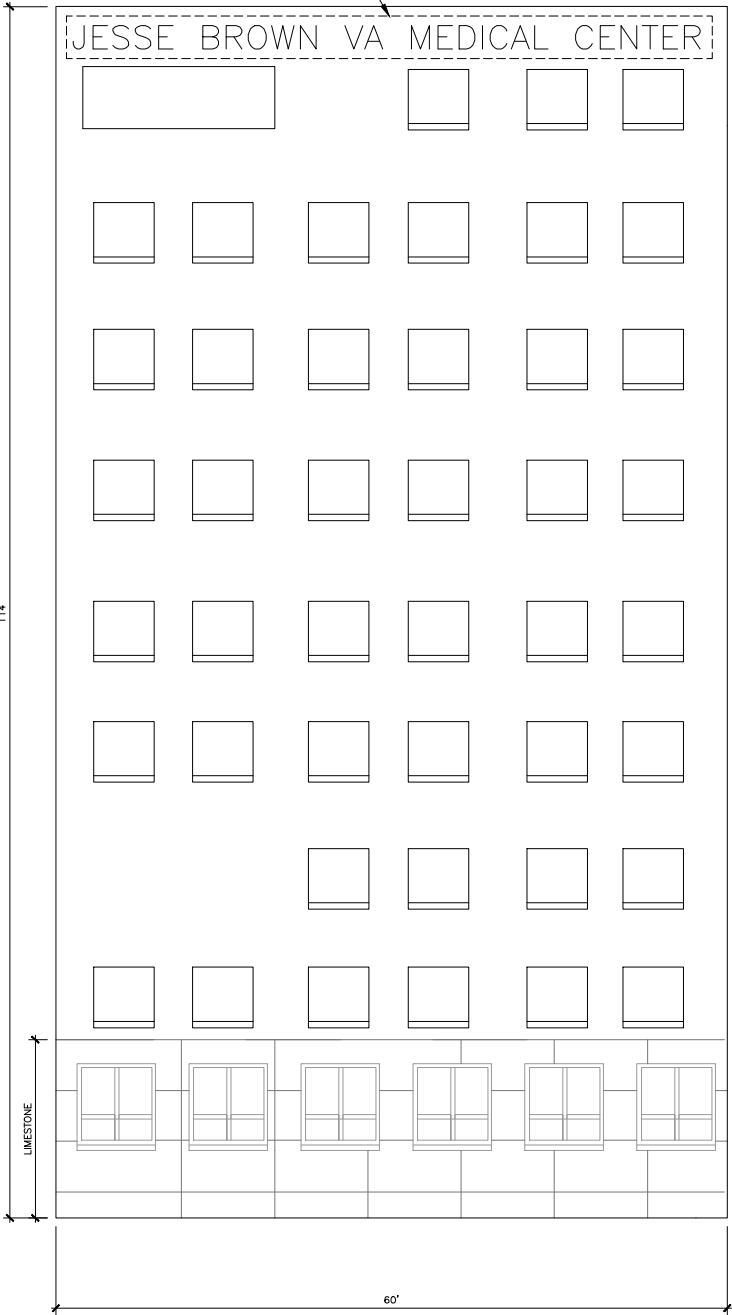
TYPICAL HELIFIX PATTERN
SEE 3/R-5



1 NORTH ELEVATION AFTER REPAIRS - PHASE 7
APPROX 3/8"=1'

SIGN TO BE RELOCATED TO THE TOP OF ROOF, LIGHTED AND VISIBLE DURING CONSTRUCTION AND REINSTALLED INTO EXISTING SPACE WITH LIGHT AND RESTORATION REQUIRED

- FINISH 9th FLOOR
- FINISH 8th FLOOR
- FINISH 7th FLOOR
- FINISH 6th FLOOR
- FINISH 5th FLOOR
- FINISH 4th FLOOR
- FINISH 3rd FLOOR
- FINISH 2nd FLOOR
- FINISH 1st FLOOR
- FINISH GROUND FLOOR



2 EXISTING NORTH ELEVATION - PHASE 7
APPROX 3/8"=1'

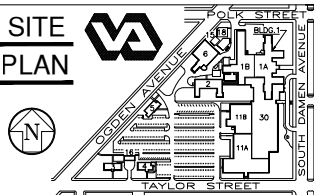
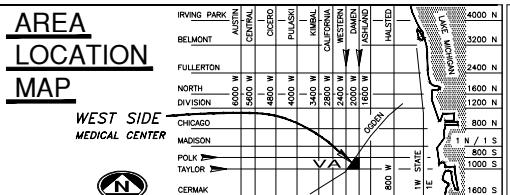
9		
8		
7		
6		
5		
4		
3	100% COMPLETION	2/28/12
2	95% COMPLETION	2/15/12
1	25% COMPLETION	1/26/12
Revisions		Date

FREGA ASSOCIATES, LTD.
ARCHITECTS ENGINEERS PLANNERS

WJE
ENGINEERS
ARCHITECTS
MATERIALS SCIENTISTS

Wiss, Janney, Elstner Associates, Inc.
330 Pfingsten Road
Northbrook, Illinois 60062
847.272.7400 tel | 847.291.5189 fax
www.wja.com

Headquarters & Laboratories: Northbrook, Illinois
Atlanta | Austin | Boston | Chicago | Cleveland | Dallas | Denver | Detroit
Honolulu | Houston | Los Angeles | Minneapolis | New Haven | New York
Pittsburgh | San Francisco | Seattle | Washington, D.C.



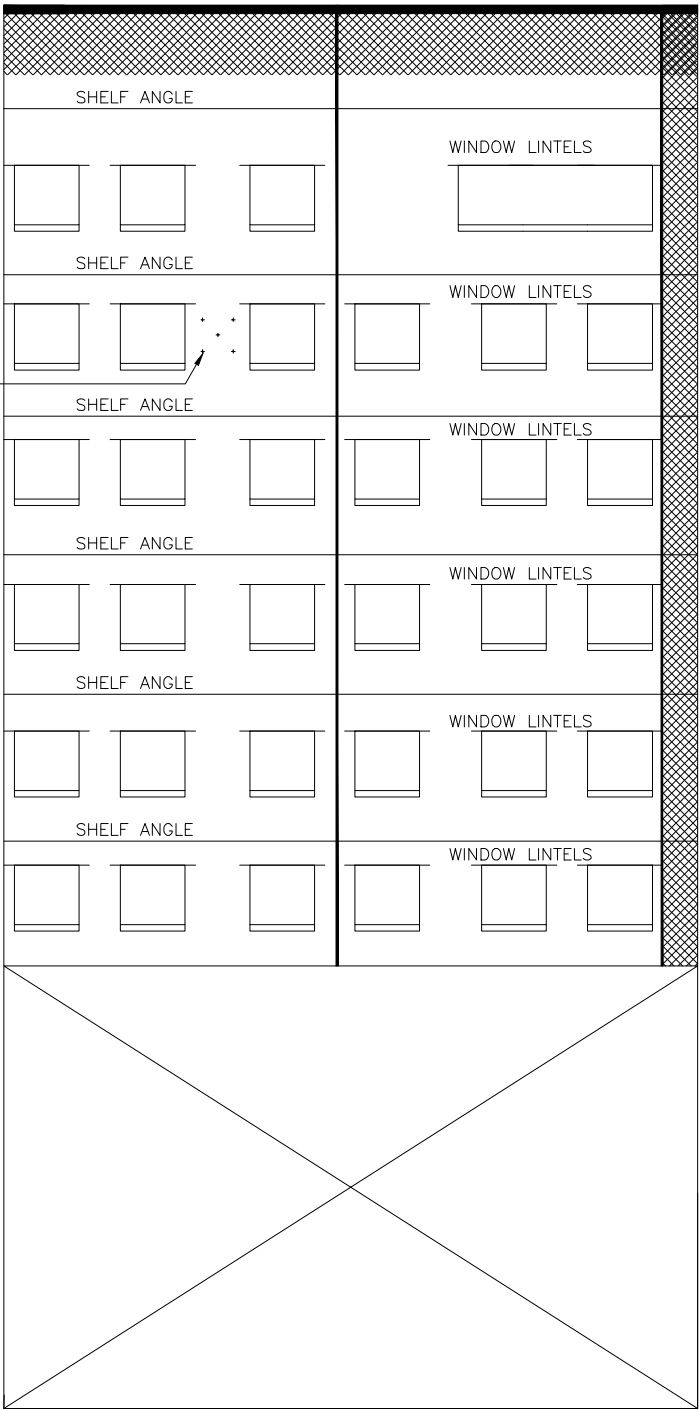
Drawing Title BUILDING 1 ELEVATION AREA OF WORK		Project Title PHASE 5,7,8 V.A. CHICAGO Medical Center		Date 02.28.2012
Approved: Chief of Engineering	Date	Building Number & Floor BUILDING 1 ALL FLOORS	Checked JEP	Drawn EJK
Approved: Director	Date	Location 820 S. DAMEN Ave. CHICAGO IL - 60612		DRAWING NO. R-2-P7 Dwg. 3 of 11

DEPARTMENT OF
VETERANS AFFAIRS

- NEW BRICK
- NEW SHELF ANGLE & FLASHING
- NEW LINTEL & FLASHING
- CONCRETE REPAIRS
- HELIFIX
- NEW CONTROL JOINTS
- NEW LIMESTONE
- SEE SECTION 00300 – ESTIMATED QUANTITIES

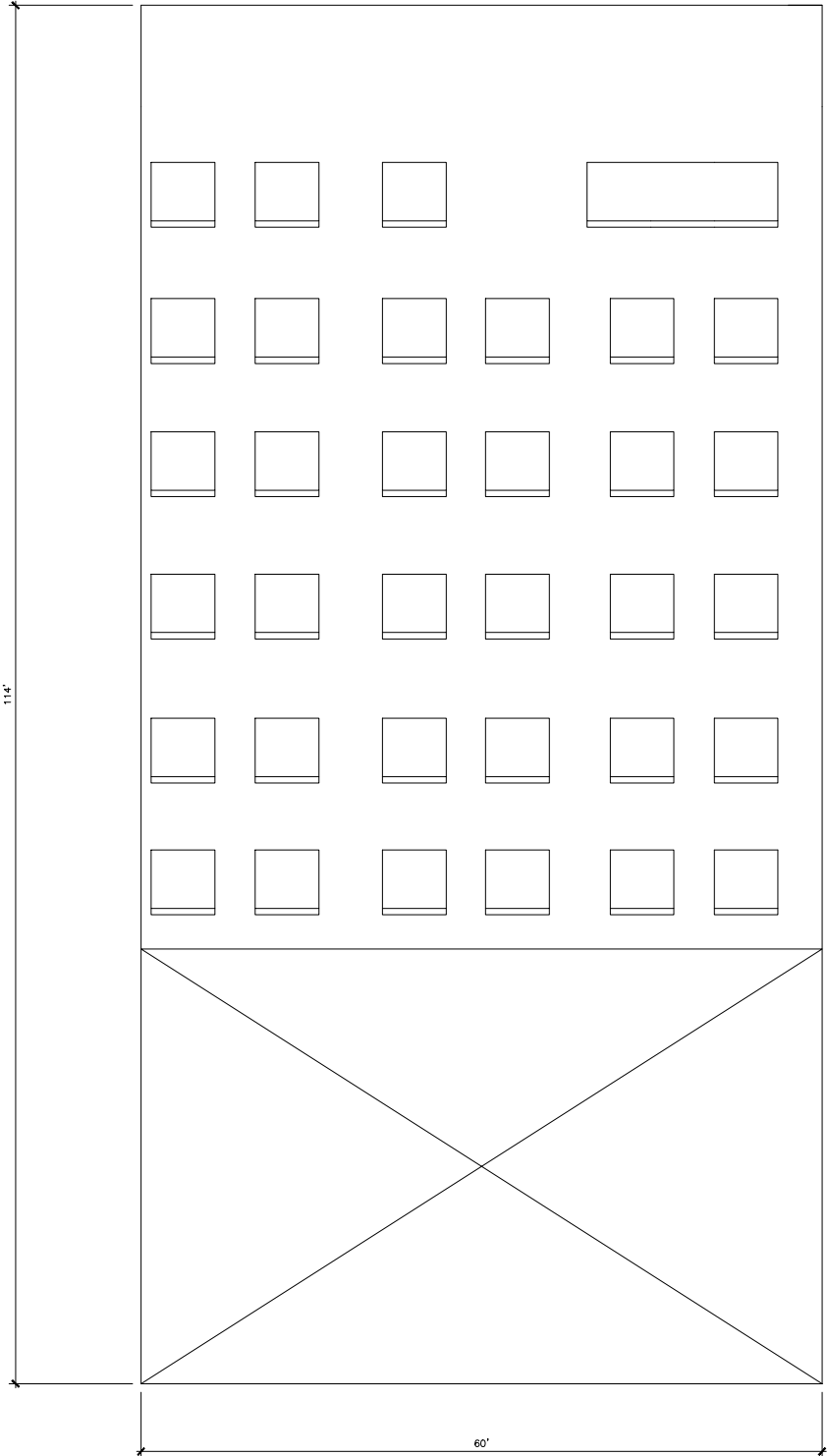
TYPICAL HELIFIX PATTERN
SEE 3/R-5

VERIFY DIMENSIONS IN FIELD



1 SOUTH ELEVATION AFTER REPAIRS – PHASE 8
APPROX $\frac{3}{16}"=1'$

- FINISH 9th FLOOR
- FINISH 8th FLOOR
- FINISH 7th FLOOR
- FINISH 6th FLOOR
- FINISH 5th FLOOR
- FINISH 4th FLOOR
- FINISH 3rd FLOOR
- FINISH 2nd FLOOR
- FINISH 1st FLOOR
- FINISH GROUND FLOOR



2 EXISTING SOUTH ELEVATION – PHASE 8
APPROX $\frac{3}{16}"=1'$

9		
8		
7		
6		
5		
4		
3	100% COMPLETION	2/28/12
2	95% COMPLETION	2/15/12
1	25% COMPLETION	1/26/12
Revisions		Date

FREGA ASSOCIATES, LTD.
ARCHITECTS, ENGINEERS, PLANNERS

WJE
ENGINEERS
ARCHITECTS
MATERIALS SCIENTISTS

Wiss, Janney, Elstner Associates, Inc.
330 Pfingsten Road
Northbrook, Illinois 60062
847.272.7400 tel | 847.291.5189 fax
www.wja.com

Headquarters & Laboratories - Northbrook, Illinois
Atlanta | Austin | Boston | Chicago | Cleveland | Dallas | Denver | Detroit
Honolulu | Houston | Los Angeles | Minneapolis | New Haven | New York
Princeton | San Francisco | Seattle | Washington, D.C.

AREA LOCATION MAP

SITE PLAN

Drawing Title	
BUILDING 1 ELEVATION AREA OF WORK	
Approved: Chief of Engineering	Date
Approved: Director	Date


Project Title		Date
PHASE 5,7,8 V.A. CHICAGO Medical Center		02.28.2012
Building Number & Floor		Project No.
BUILDING 1 ALL FLOORS		JB-537-12-116
Location		DRAWING NO.
820 S. DAMEN Ave. CHICAGO IL - 60612		R-2-P8 Dwg. 4 of 11

DEPARTMENT OF
VETERANS AFFAIRS

Scale bars and section markers (A-F) are located along the left margin of the drawing.

THIS PAGE INTENTIONALLY LEFT BLANK

9		
8		
7		
6		
5		
4		
3	100% COMPLETION	2/28/12
2	95% COMPLETION	2/15/12
1	25% COMPLETION	1/26/12
Revisions		Date

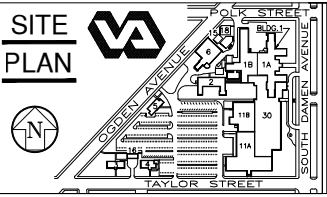
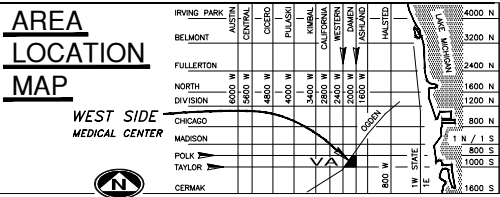


FREGA ASSOCIATES, LTD.
ARCHITECTS ENGINEERS PLANNERS

ENGINEERS
ARCHITECTS
MATERIALS SCIENTISTS

Wiss, Janney, Elstner Associates, Inc.
330 Pfingsten Road
Northbrook, Illinois 60062
847.272.7400 tel | 847.291.5189 fax
www.wja.com

Headquarters & Laboratories : Northbrook, Illinois
Atlanta | Austin | Boston | Chicago | Cleveland | Dallas | Denver | Detroit
Honolulu | Houston | Los Angeles | Minneapolis | New Haven | New York
Pittsburgh | San Francisco | Seattle | Washington, D.C.

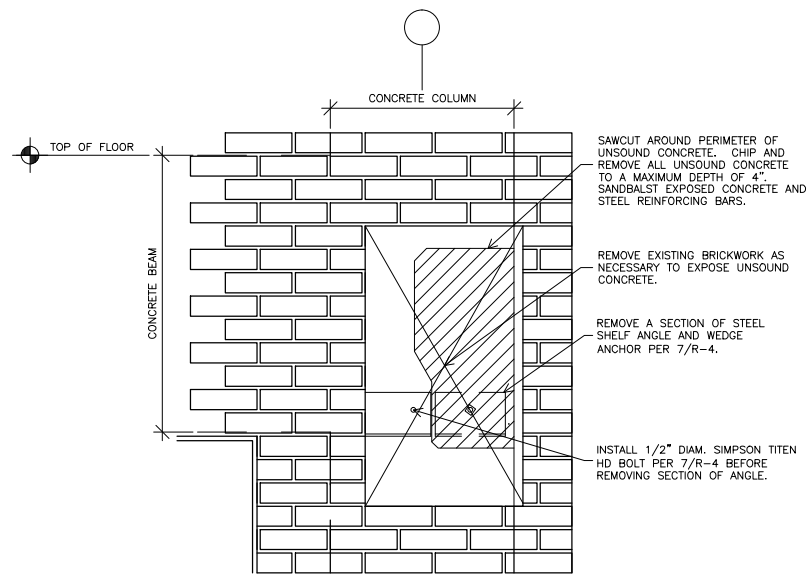


Drawing Title	
BUILDING 1	
ELEVATION AREA OF WORK	
Approved: Chief of Engineering	Date
Approved: Director	Date

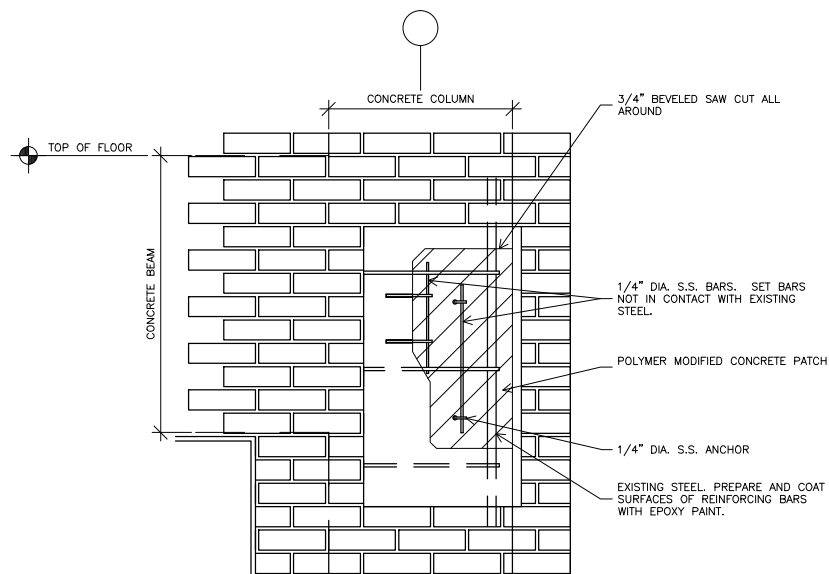
Project Title	
PHASE 5,7,8	
V.A. CHICAGO	
Medical Center	
Building Number & Floor	Checked
BUILDING 1	JEP
ALL FLOORS	SBS
Location	Date
820 S. DAMEN Ave.	CHICAGO IL - 60612

Date
02.28.2012
Project No.
JB-537-12-116
Drawing No.
R-3
Drawn
5 of 11

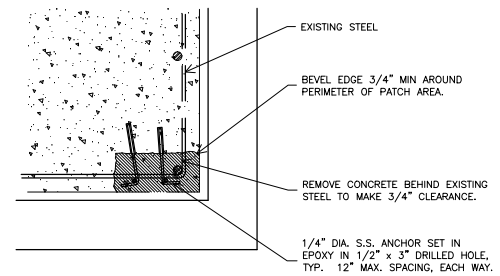
DEPARTMENT OF
VETERANS AFFAIRS



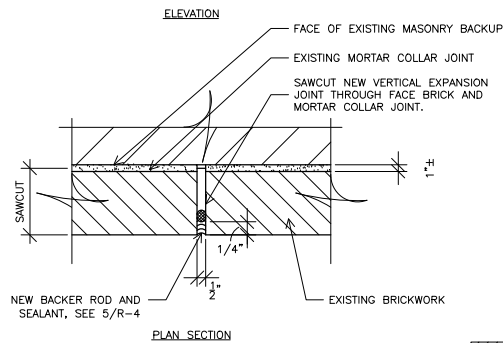
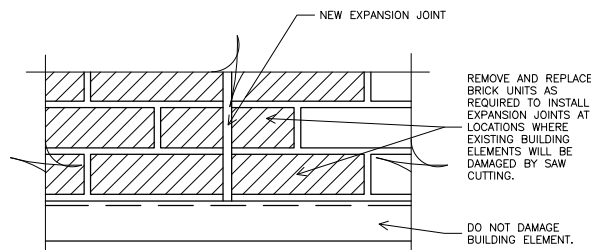
1 REMOVAL OF UNSOUND CONCRETE
1'-1/2" = 1'-0"



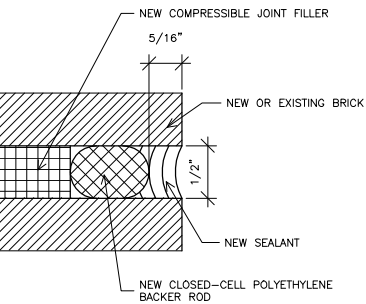
2 CONCRETE REPAIR - PARTIAL ELEVATION
1'-1/2" = 1'-0"



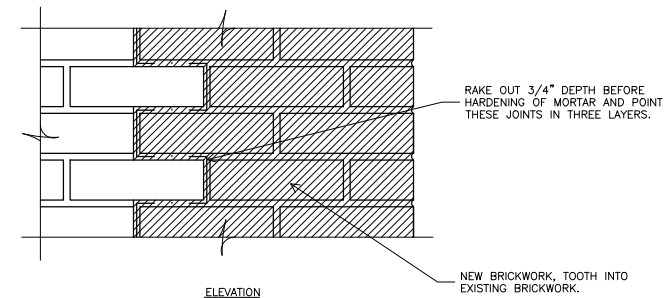
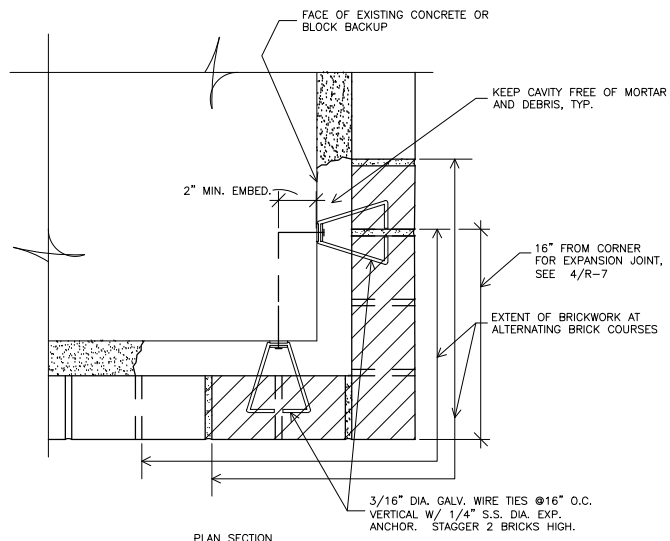
3 COLUMN CONCRETE REPAIR
1'-1/2" = 1'-0"



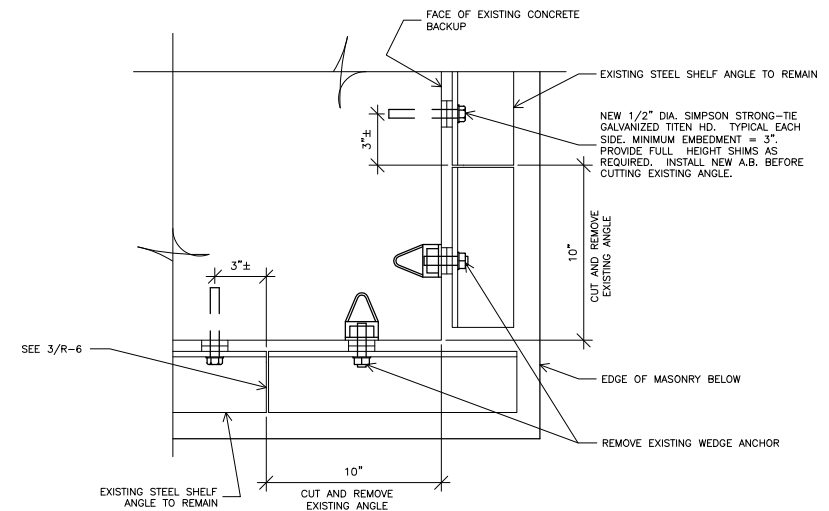
4 CORNER VERTICAL EXPANSION JOINT
3" = 1'-0"



5 BACKER ROD & SEALANT DETAIL
NONE



6 BRICKWORK AT CORNER
3" = 1'-0"



7 EXISTING SHELF ANGLE AT CORNER - REMOVAL
3" = 1'-0"

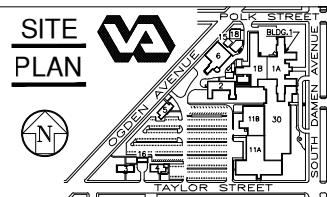
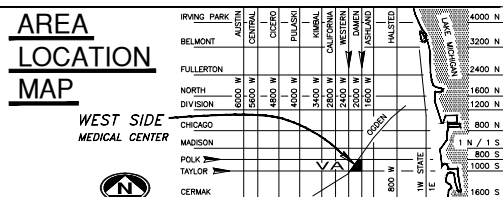
Revisions	Date
8	
7	
6	
5	
4	
3	100% COMPLETION 2/28/12
2	95% COMPLETION 2/15/12
1	25% COMPLETION 1/26/12

FREGA ASSOCIATES, LTD.
ARCHITECTS ENGINEERS PLANNERS

ENGINEERS
ARCHITECTS
MATERIALS SCIENTISTS

Wiss, Janney, Elstner Associates, Inc.
330 Pfingsten Road
Northbrook, Illinois 60062
847.272.7400 tel | 847.291.5189 fax
www.wja.com

Headquarters & Laboratories: Northbrook, Illinois
Atlanta | Austin | Boston | Chicago | Cleveland | Dallas | Denver | Detroit
Honolulu | Houston | Los Angeles | Minneapolis | New Haven | New York
Princeton | San Francisco | Seattle | Washington, D.C.

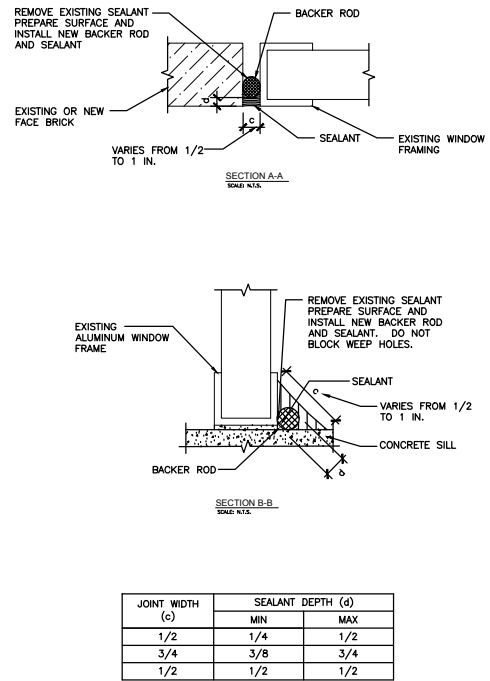
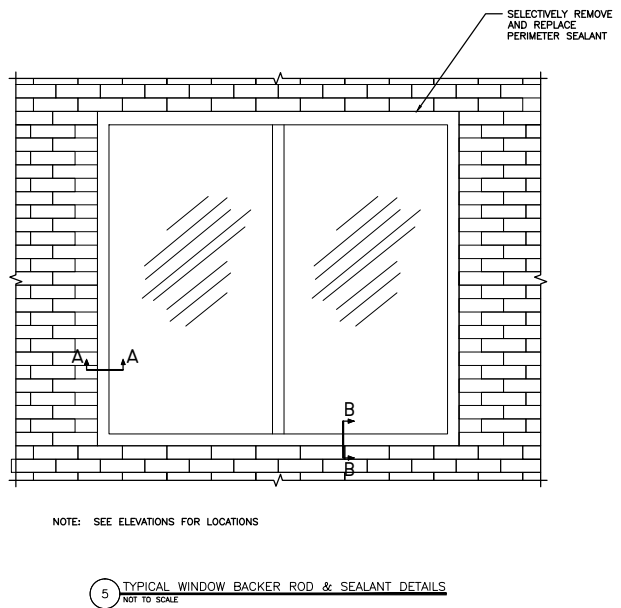
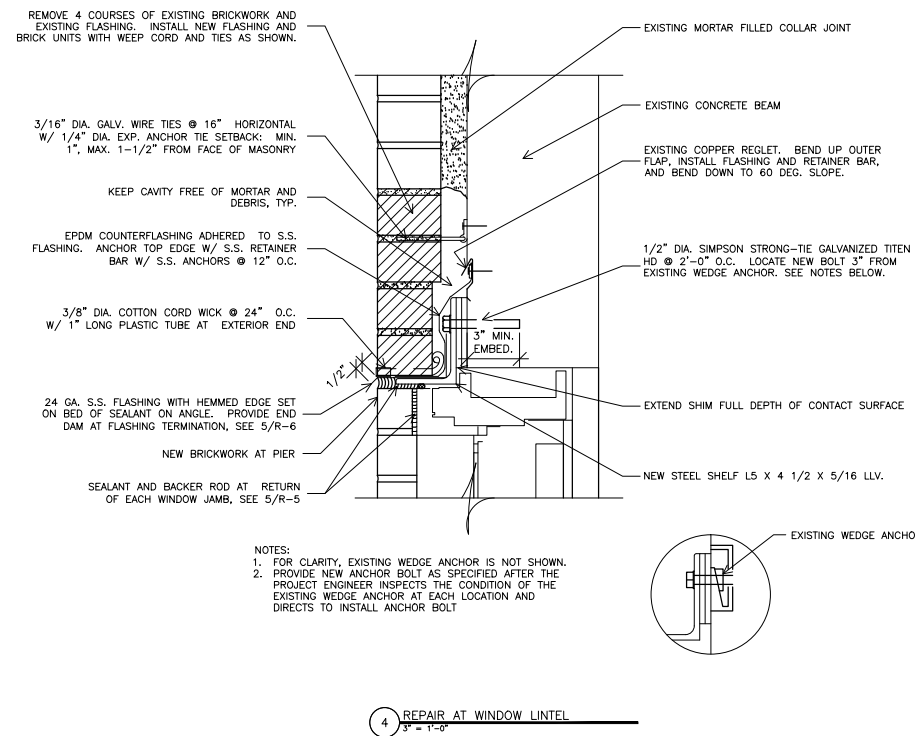
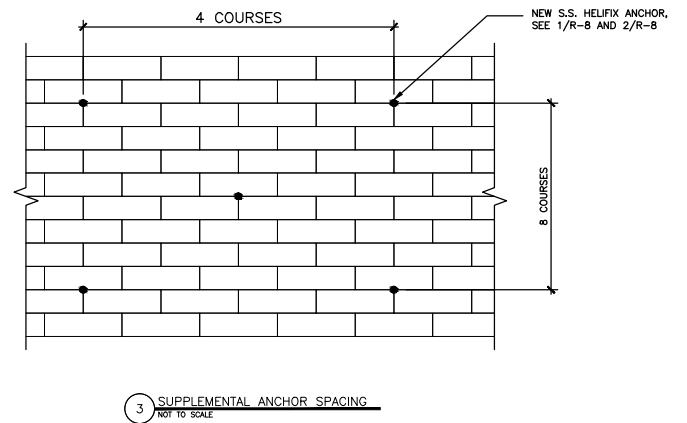
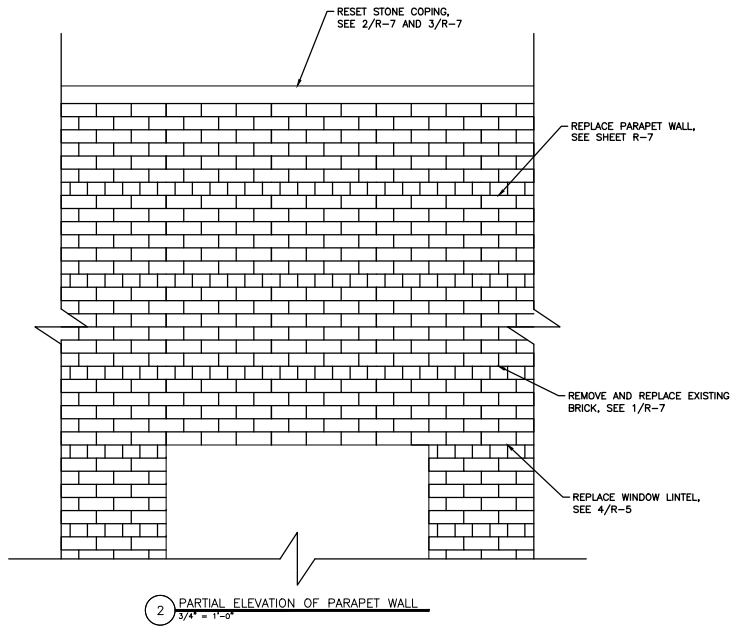
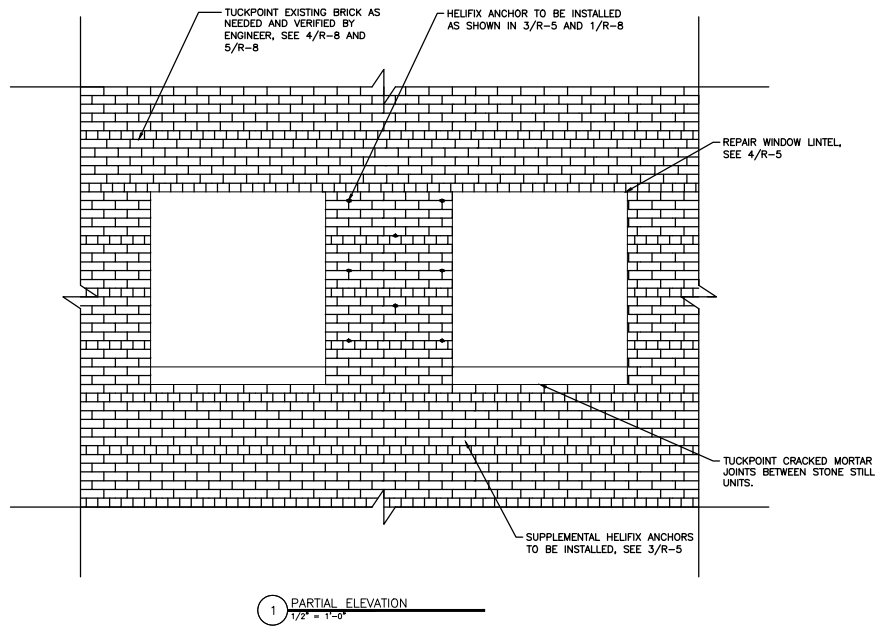


Drawing Title	
CONCRETE REPAIRS AND EXPANSION JOINT	
Approved: Chief of Engineering	Date
Approved: Director	Date

Project Title	
PHASE 5,7,8 V.A. CHICAGO Medical Center	
Building Number & Floor	Checked
BUILDING 1 ALL FLOORS	JEP
Location	Drawn
820 S. DAMEN Ave. CHICAGO IL - 60612	SBS

Date
02.28.2012
Project No.
JB-537-12-116
Drawing No.
R-4
Des.
6 of 11

DEPARTMENT OF
VETERANS AFFAIRS



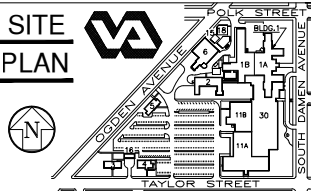
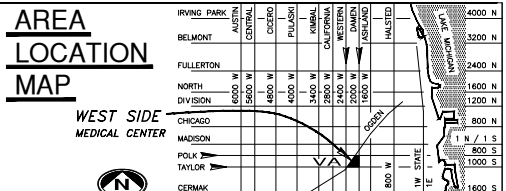
8		
7		
6		
5		
4		
3	100% COMPLETION	2/28/12
2	95% COMPLETION	2/15/12
1	25% COMPLETION	1/26/12
Revisions		Date

FREGA ASSOCIATES, LTD.
ARCHITECTS ENGINEERS PLANNERS

ENGINEERS
ARCHITECTS
MATERIALS SCIENTISTS

Wiss, Janney, Elstner Associates, Inc.
330 Pfingsten Road
Northbrook, Illinois 60062
847.272.7400 tel | 847.291.5189 fax
www.wja.com

Headquarters & Laboratories : Northbrook, Illinois
Atlanta | Austin | Boston | Chicago | Cleveland | Dallas | Denver | Detroit
Honolulu | Houston | Los Angeles | Los Angeles | Minneapolis | New Haven | New York
Princeton | San Francisco | Seattle | Washington, D.C.



Drawing Title

BRICK AND SHELF ANGLE REPAIRS AT WINDOWS

Approved: Chief of Engineering Date

Approved: Director Date

Project Title

PHASE 5,7,8 V.A. CHICAGO Medical Center

Date 02.28.2012

Project No. JB-537-12-116

Building Number & Floor BUILDING 1 ALL FLOORS

Checked JEP Drawn SBS

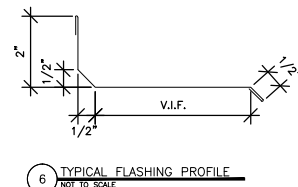
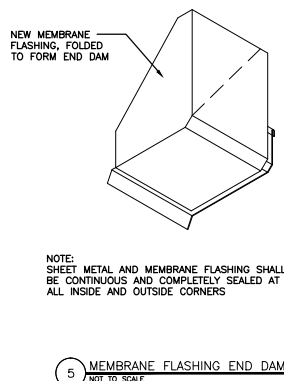
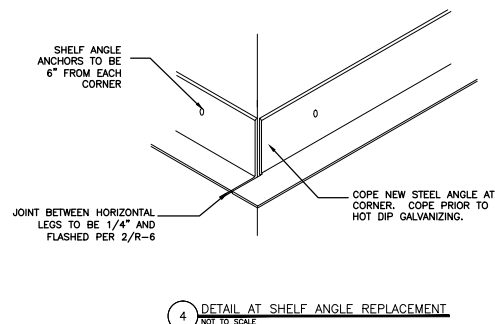
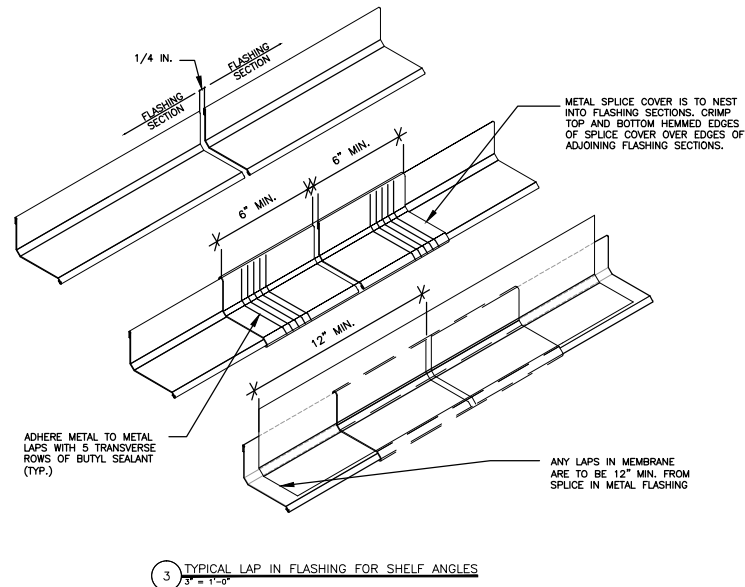
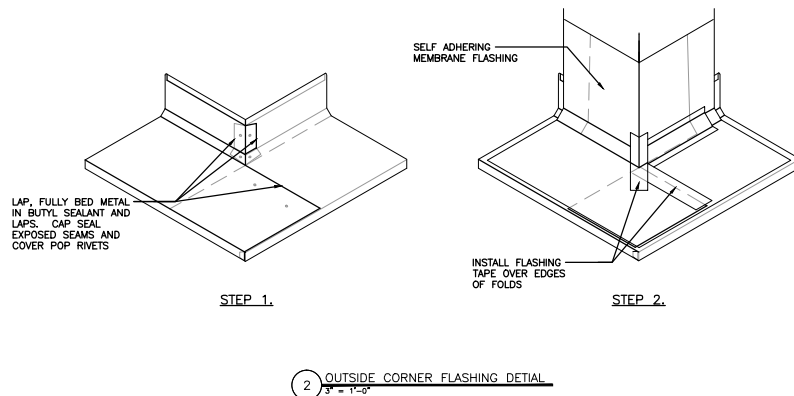
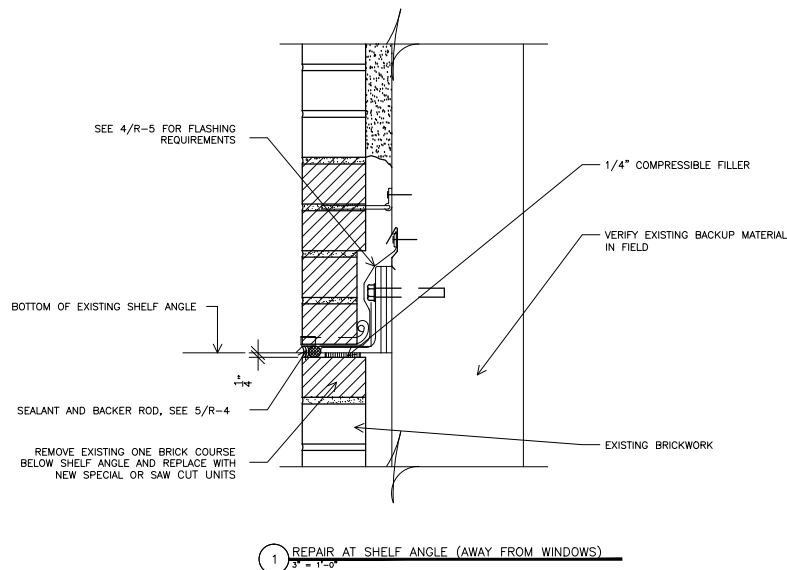
Location 820 S. DAMEN Ave. CHICAGO IL - 60612

DRAWING NO. R-5


Des. 7 of 11

DEPARTMENT OF VETERANS AFFAIRS


one-eighth inch = one foot
one-quarter inch = one foot
three-eighths inch = one foot
one-half inch = one foot
three-quarters inch = one foot
one inch = one foot
one and one-half inches = one foot
three inches = one foot
A
B
C
D
E
F



8		
7		
6		
5		
4		
3	100% COMPLETION	2/28/12
2	95% COMPLETION	2/15/12
1	25% COMPLETION	1/26/12
Revisions		Date



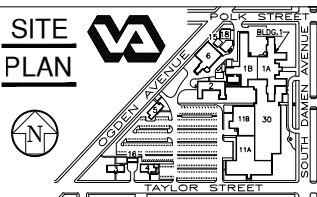
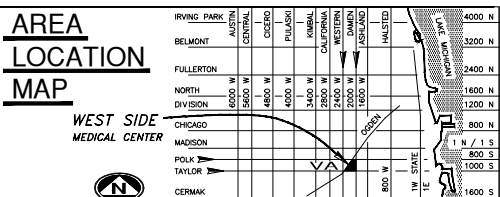
FREGA ASSOCIATES, LTD.
ARCHITECTS ENGINEERS PLANNERS



ENGINEERS
ARCHITECTS
MATERIALS SCIENTISTS

Wiss, Janney, Elstner Associates, Inc.
330 Pfingsten Road
Northbrook, Illinois 60062
847.272.7400 tel | 847.291.5189 fax
www.wja.com

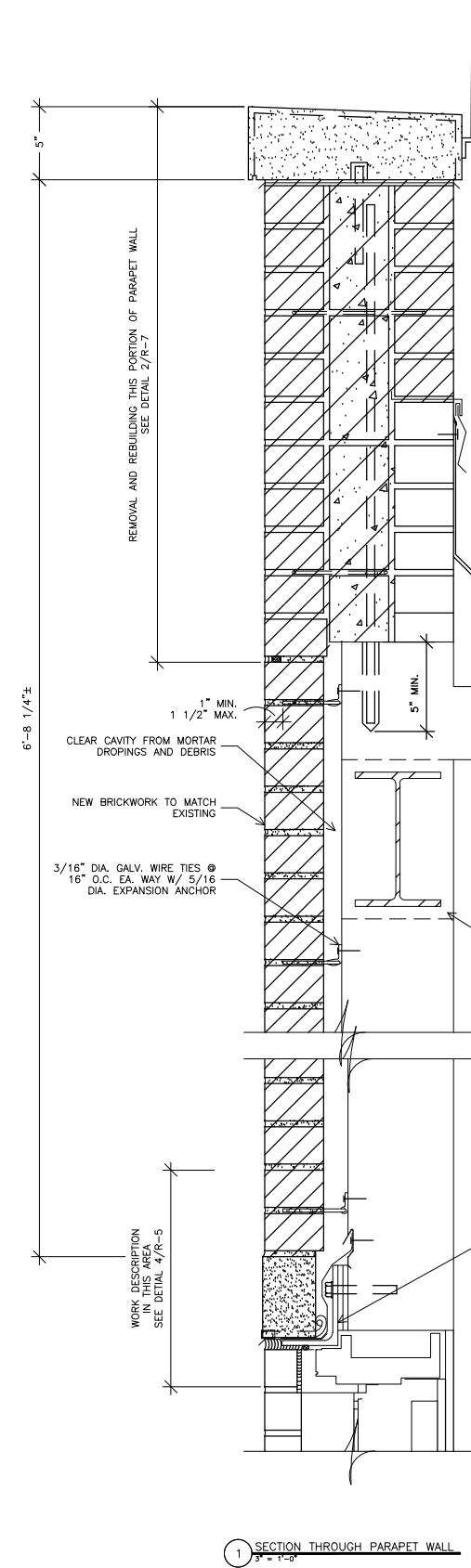
Headquarters & Laboratories : Northbrook, Illinois
Atlanta | Austin | Boston | Chicago | Cleveland | Dallas | Denver | Detroit
Honolulu | Houston | Los Angeles | Minneapolis | New Haven | New York
Princeton | San Francisco | Seattle | Washington, D.C.



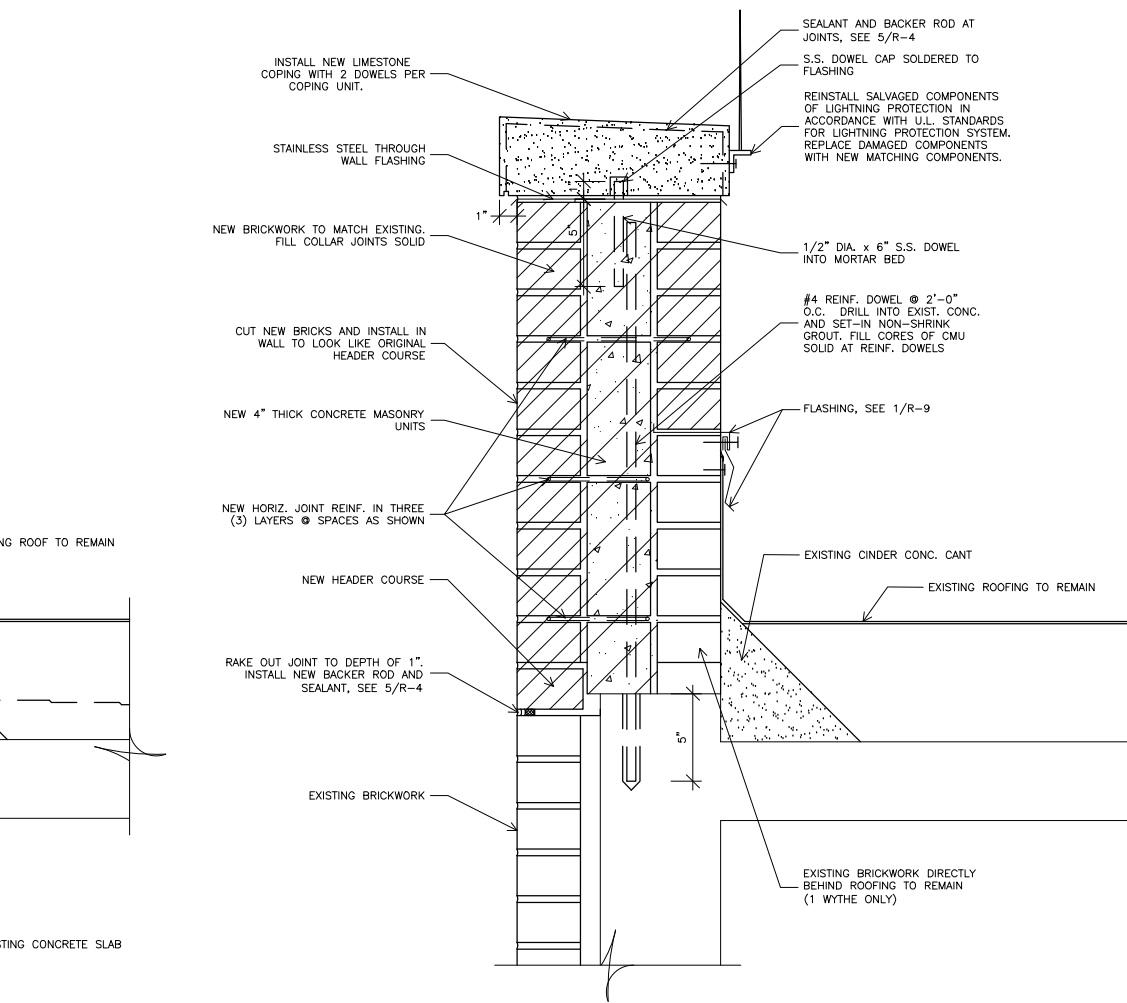
Drawing Title SHELF ANGLE REPAIRS AWAY FROM WINDOWS		Project Title PHASE 5,7,8 V.A. CHICAGO Medical Center		Date 02.28.2012	
Approved: Chief of Engineering Date		Building Number & Floor BUILDING 1 ALL FLOORS		Project No. JB-537-12-116	
Approved: Director Date		Checked JEP		Drawn SBS	
		Location 820 S. DAMEN Ave. CHICAGO IL - 60612		DRAWING NO. R-6 Dwg. 8 of 11	

DEPARTMENT OF
VETERANS AFFAIRS

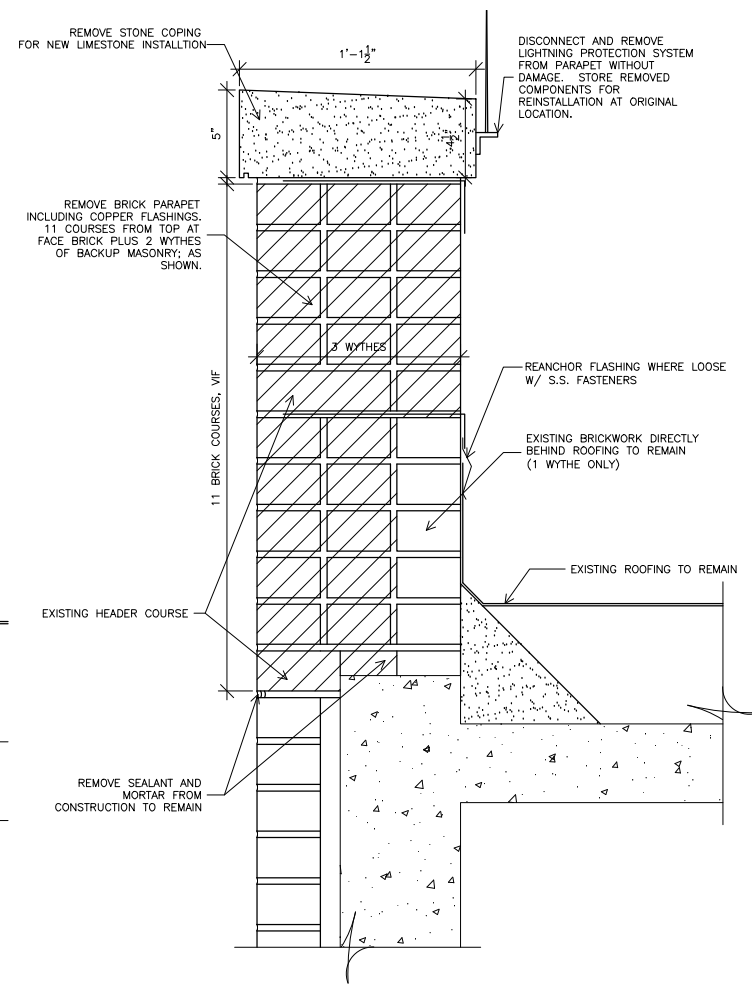
one-eighth inch = one foot
one-quarter inch = one foot
three-eighths inch = one foot
one-half inch = one foot
three-quarters inch = one foot
one inch = one foot
one and one-half inches = one foot
two inches = one foot
three inches = one foot



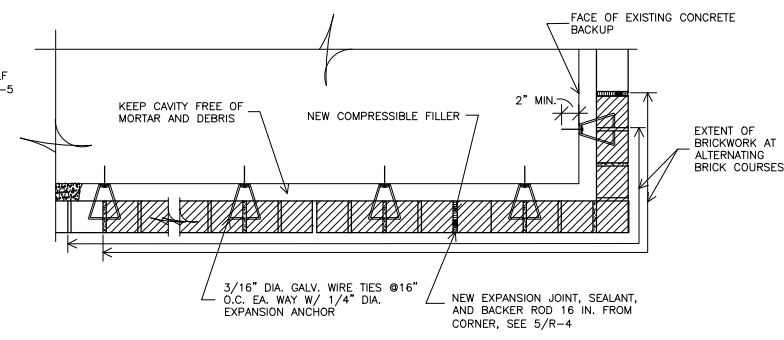
1 SECTION THROUGH PARAPET WALL
3" = 1'-0"



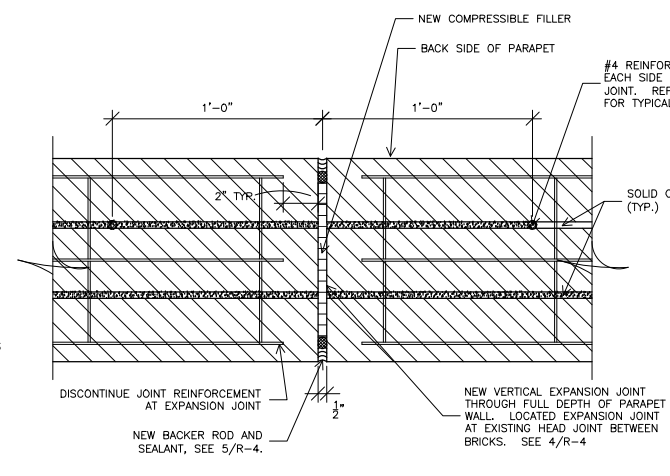
2 SECTION THROUGH NEW PARAPET WALL
3" = 1'-0"



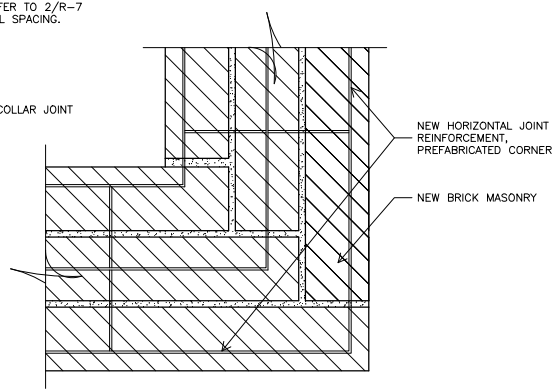
3 DEMOLITION OF EXISTING PARAPET WALL
3" = 1'-0"



4 PLAN SECTION
3" = 1'-0"



5 PLAN SECTION AT PARAPET EXPANSION JOINT
3" = 1'-0"



6 PLAN SECTION AT PARAPET CORNER
3" = 1'-0"

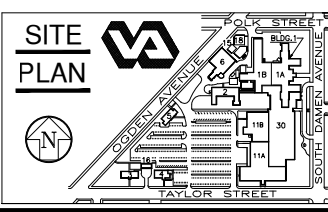
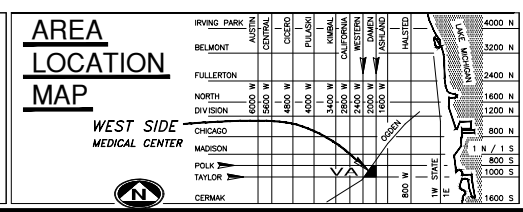
Revisions	Date
8	
7	
6	
5	
4	
3	100% COMPLETION 2/28/12
2	95% COMPLETION 2/15/12
1	25% COMPLETION 1/26/12

FREGA ASSOCIATES, LTD.
ARCHITECTS ENGINEERS PLANNERS

WJE
ENGINEERS
ARCHITECTS
MATERIALS SCIENTISTS

Wiss, Janney, Elstner Associates, Inc.
330 Pfingsten Road
Northbrook, Illinois 60062
847.272.7400 tel | 847.291.5189 fax
www.wja.com

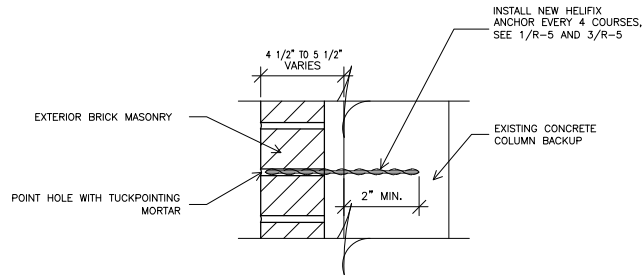
Headquarters & Laboratories: Northbrook, Illinois
Atlanta | Austin | Boston | Chicago | Cleveland | Dallas | Denver | Detroit
Honolulu | Houston | Los Angeles | Minneapolis | New Haven | New York
Princeton | San Francisco | Seattle | Washington, D.C.



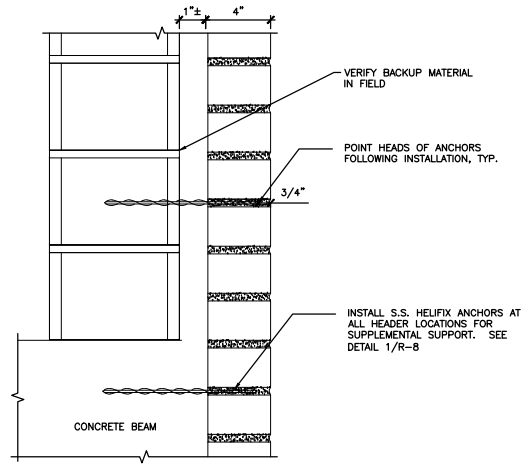
Drawing Title	
PARAPET WALL DETAILS	
Approved: Chief of Engineering	Date
Approved: Director	Date

Project Title		Date
PHASE 5,7,8 V.A. CHICAGO Medical Center		02.28.2012
Project No.		JB-537-12-116
Building Number & Floor	Checked	Drawn
BUILDING 1 ALL FLOORS	JEP	SBS
Location		Dwg. 9 of 11
820 S. DAMEN Ave. CHICAGO IL - 60612		

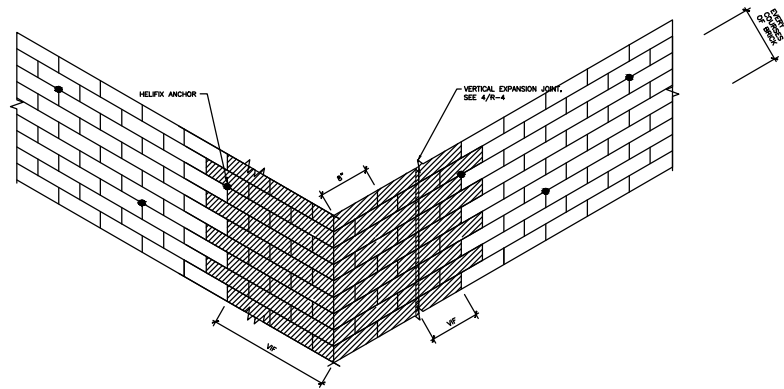
DEPARTMENT OF
VETERANS AFFAIRS



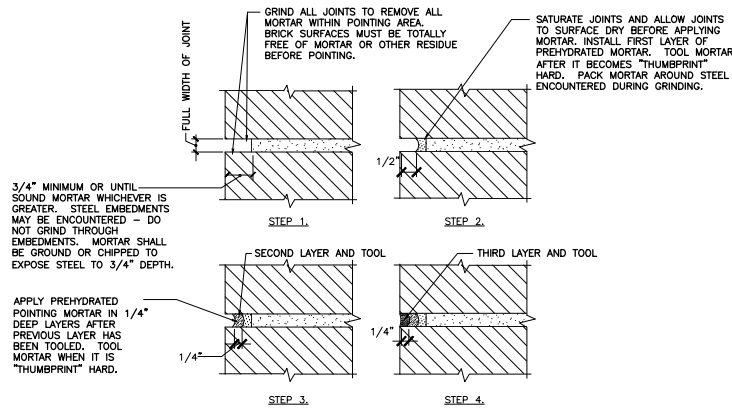
1 MASONRY REPAIR ANCHOR
NOT TO SCALE



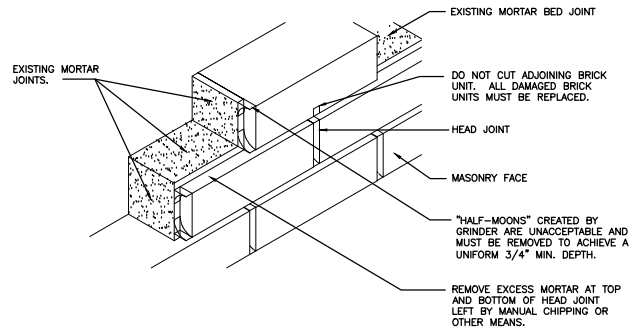
2 SUPPLEMENTAL HELIFIX ANCHOR
NOT TO SCALE



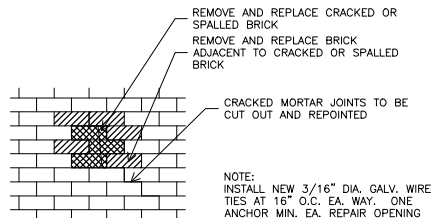
3 EXISTING CORNER BRICK ANCHORAGE
NOT TO SCALE



4 TUCKPOINTING/REPOINTING DETAILS
NOT TO SCALE

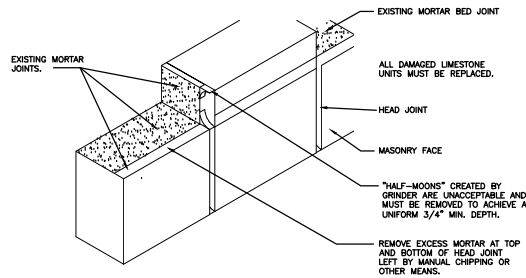


5 TYPICAL BRICK TUCKPOINTING DETAIL
NOT TO SCALE



CRACKED OR SPALLED BRICK TO BE REPLACED
ADJACENT BRICK TO BE REPLACED AS REQUIRED TO REPLACE CRACKED OR SPALLED BRICK

6 CRACK REPAIR GUIDELINES
NOT TO SCALE



7 TYPICAL LIMESTONE TUCKPOINTING DETAIL
NOT TO SCALE

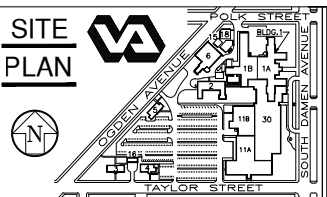
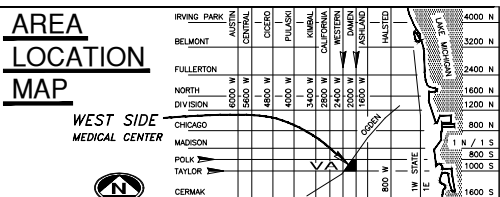
9		
8		
7		
6		
5		
4		
3	100% COMPLETION	2/28/12
2	95% COMPLETION	2/15/12
1	25% COMPLETION	1/26/12
Revisions		Date

FREGA ASSOCIATES, LTD.
ARCHITECTS ENGINEERS PLANNERS

WJE
ENGINEERS
ARCHITECTS
MATERIALS SCIENTISTS

Wiss, Janney, Elstner Associates, Inc.
330 Pfingsten Road
Northbrook, Illinois 60062
847.272.7400 tel | 847.291.5189 fax
www.wja.com

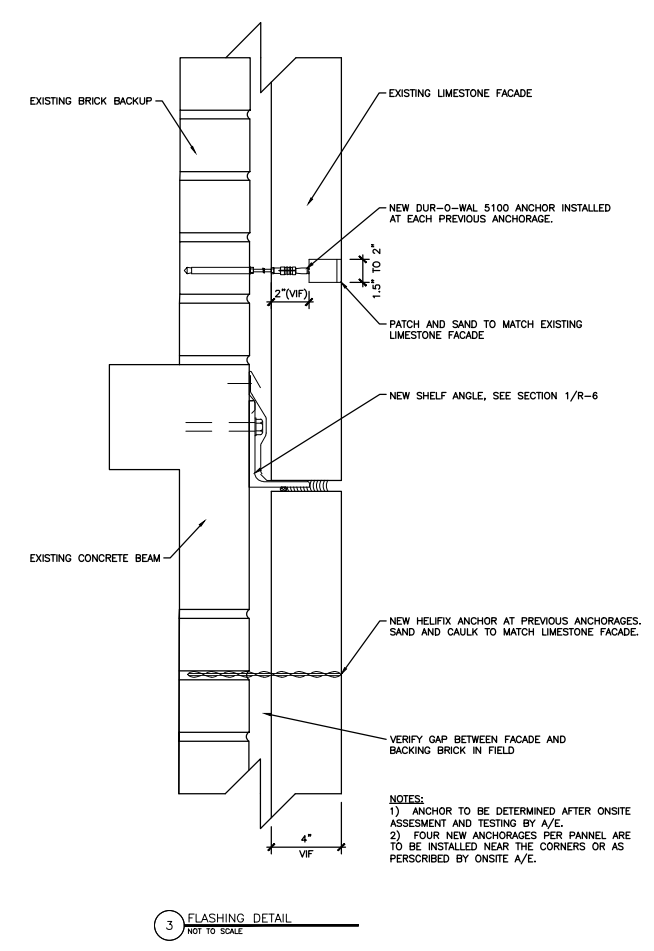
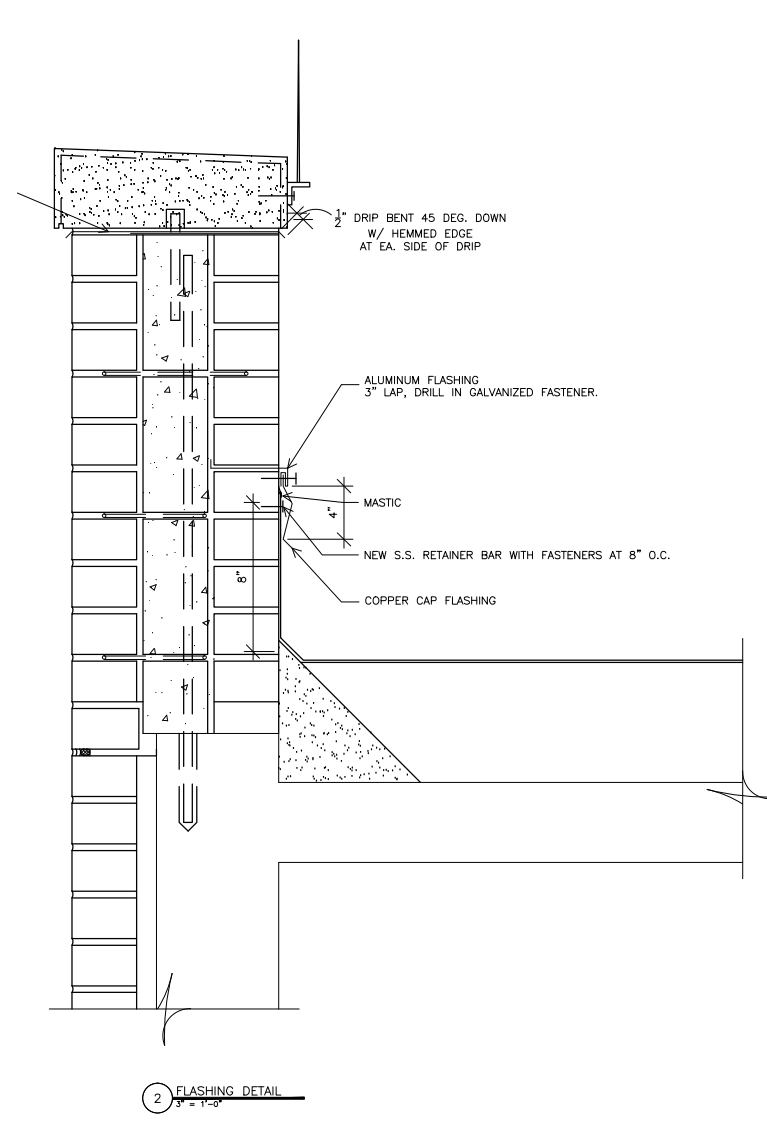
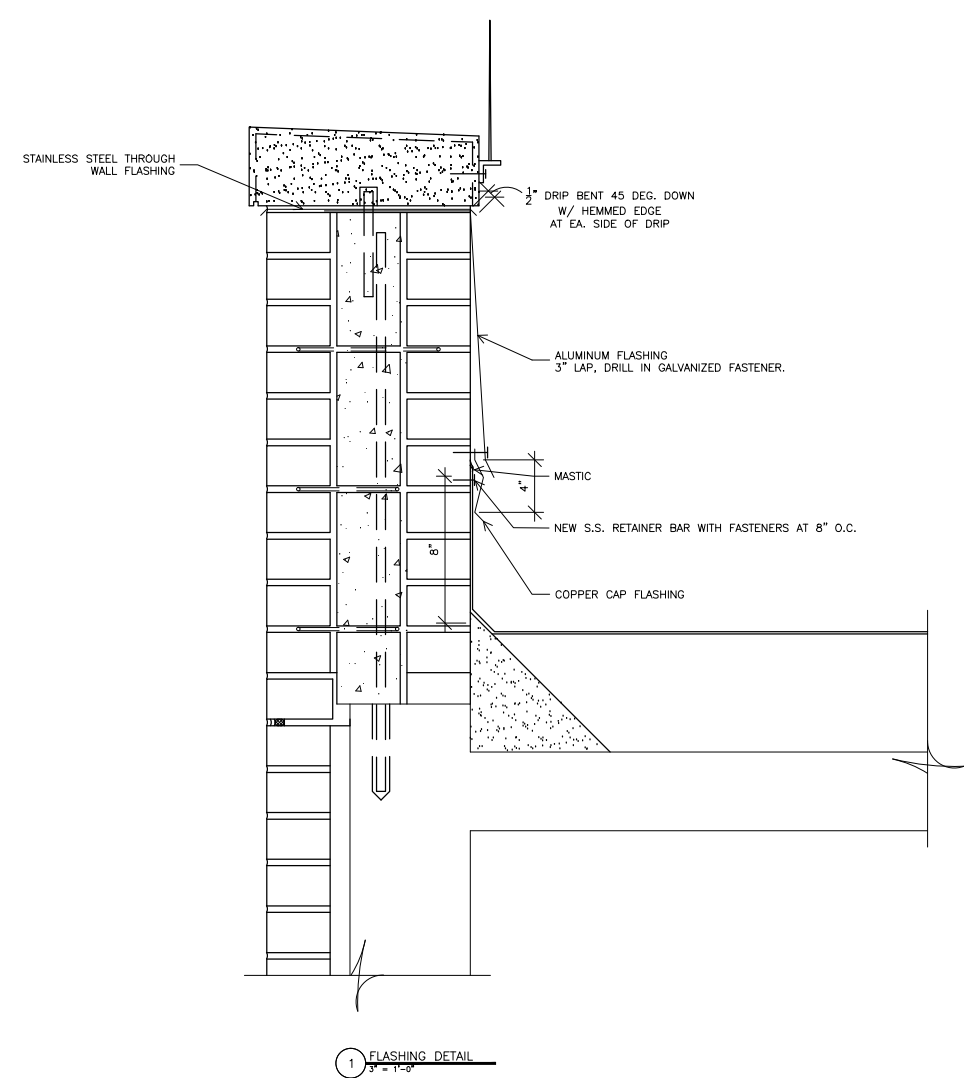
Headquarters & Laboratories : Northbrook, Illinois
Atlanta | Austin | Boston | Chicago | Cleveland | Dallas | Denver | Detroit
Honolulu | Houston | Los Angeles | Minneapolis | New Haven | New York
Princeton | San Francisco | Seattle | Washington, D.C.



Drawing Title MISCELLANEOUS REPAIR DETAILS		Project Title PHASE 5,7,8 V.A. CHICAGO Medical Center		Date 02.28.2012	
Approved: Chief of Engineering Date		Building Number & Floor BUILDING 1 ALL FLOORS		Project No. JB-537-12-116	
Approved: Director Date		Checked JEP		Drawn SBS	
		Location 820 S. DAMEN Ave. CHICAGO IL - 60612		Drawing No. R-8 Dwg. 10 of 11	

DEPARTMENT OF
VETERANS AFFAIRS

Scale bars and grid lines (A through F) are provided along the left margin of the drawing.



NOTES:
1) ANCHOR TO BE DETERMINED AFTER ONSITE ASSESSMENT AND TESTING BY A/E.
2) FOUR NEW ANCHORAGES PER PANNEL ARE TO BE INSTALLED NEAR THE CORNERS OR AS PERSCRIBED BY ONSITE A/E.

Revisions	Date
3	100% COMPLETION 2/28/12
2	95% COMPLETION 2/15/12
1	25% COMPLETION 1/26/12

FREGA ASSOCIATES, LTD.
ARCHITECTS ENGINEERS PLANNERS

ENGINEERS
ARCHITECTS
MATERIALS SCIENTISTS

Wiss, Janney, Elstner Associates, Inc.
330 Pfingsten Road
Northbrook, Illinois 60062
847.272.7400 tel | 847.291.5189 fax
www.wja.com

Headquarters & Laboratories : Northbrook, Illinois
Atlanta | Austin | Boston | Chicago | Cleveland | Dallas | Denver | Detroit
Honolulu | Houston | Los Angeles | Minneapolis | New Haven | New York
Princeton | San Francisco | Seattle | Washington, D.C.

AREA LOCATION MAP

WEST SIDE MEDICAL CENTER

SITE PLAN

Drawing Title
MISCELLANEOUS REPAIR DETAILS

Approved: Chief of Engineering Date
Approved: Director Date

Project Title
**PHASE 5,7,8
V.A. CHICAGO
Medical Center**

Building Number & Floor
**BUILDING 1
ALL FLOORS**

Location
**820 S. DAMEN Ave.
CHICAGO IL - 60612**

Checked
JEP

Drawn
SBS

Date
02.28.2012

Project No.
JB-537-12-116

DRAWING NO.
R-9
Page 11 of 11

DEPARTMENT OF
VETERANS AFFAIRS