

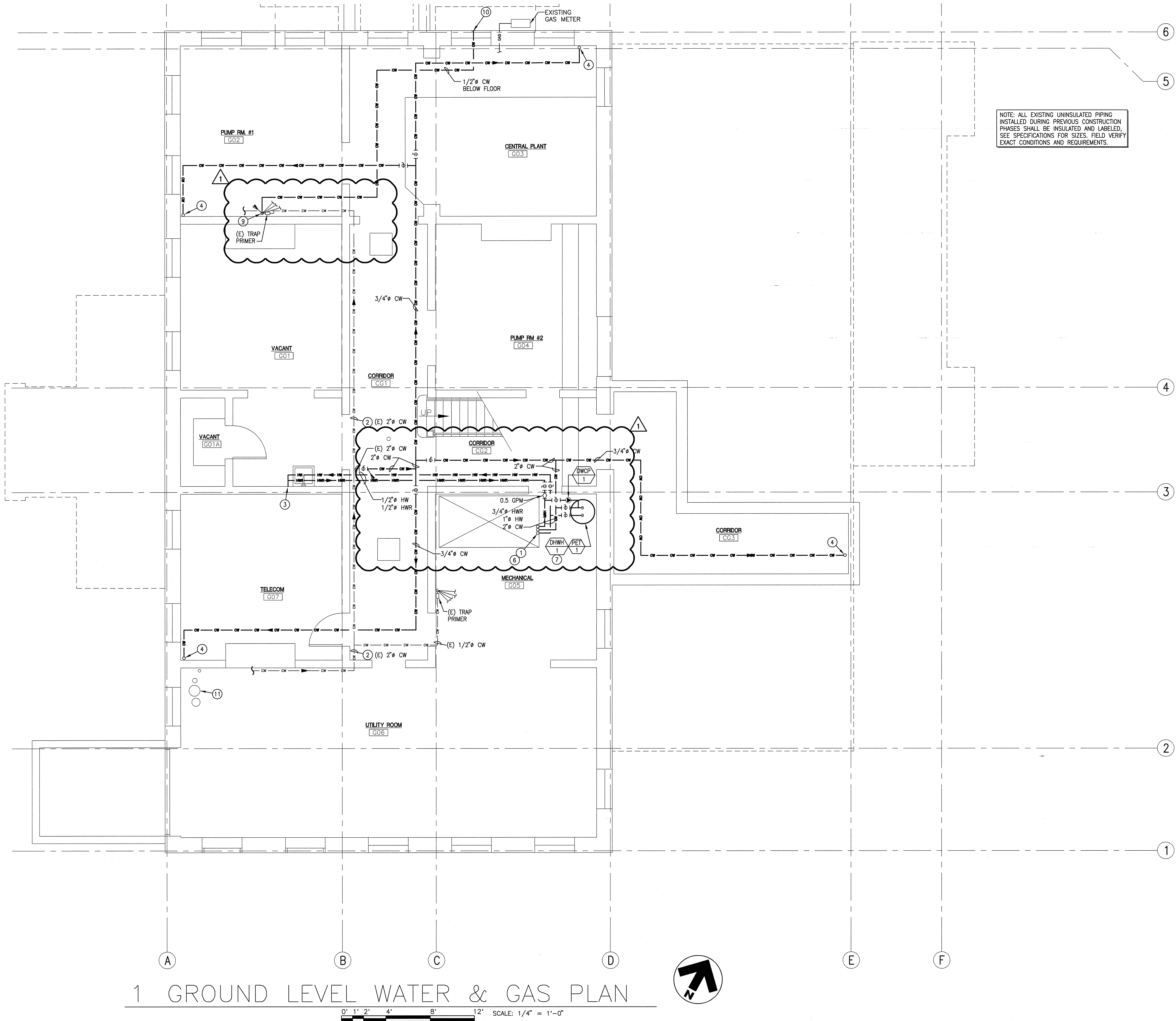
GENERAL NOTES:

- REFER TO THE MECHANICAL PLANS FOR EQUIPMENT AND DUCTWORK LOCATIONS BEFORE INSTALLING ANY PIPING. COORDINATE WITH THE MECHANICAL CONTRACTOR.
- PIPING PENETRATIONS THROUGH RATED ASSEMBLIES SHALL BE FIRESTOPPED IN ACCORDANCE WITH 2006 IBC SECTION 712.
- LOCATIONS OF POINTS OF CONNECTION TO WATER, AND WASTE ARE APPROXIMATE. VERIFY ACTUAL LOCATIONS OF ALL POINTS OF CONNECTION IN FIELD.
- CAREFULLY COORDINATE THE INSTALLATION OF WATER PIPING LOCATED INSIDE WALLS OR ABOVE CEILINGS WITH OTHER TRADES PRIOR TO AND DURING CONSTRUCTION. COORDINATE PIPING ENTRY AND EXIT LOCATIONS WITH THE STRUCTURAL AND ARCHITECTURAL DRAWINGS PRIOR TO CONSTRUCTION.
- ALL ITEMS THAT REQUIRE ACCESS, SUCH AS FOR OPERATING, CLEANING, SERVICING, MAINTENANCE, AND CALIBRATION, SHALL BE EASILY AND SAFELY ACCESSIBLE BY PERSONS STANDING AT FLOOR LEVEL, OR STANDING ON PERMANENT PLATFORMS, WITHOUT THE USE OF PORTABLE LADDERS. EXAMPLES OF THESE ITEMS INCLUDE, BUT ARE NOT LIMITED TO: ALL TYPES IF VALVES, FILTERS AND STRAINERS, TRANSMITTERS, CONTROL DEVICES. PRIOR TO COMMENCING INSTALLATION WORK, REFER CONFLICTS BETWEEN THIS REQUIREMENT AND CONTRACT DRAWINGS TO THE RE/COTR FOR RESOLUTION.
- ALL SINK SINK CW AND HW SUPPLIES ARE 12.7 mm (1/2") UNLESS NOTED OTHERWISE.
- REFER TO DRAWING P3.1 FOR ALL PLUMBING DETAILS THAT ARE NOT REFERENCED.
- REMOVE AREAS OF RATED SHAFT AS REQUIRED TO INSTALL NEW PLUMBING LINES. UPON INSTALLATION OF LINES, SHAFT SHALL BE CLOSED UP, SEALED AND REPAINTED TO MATCH EXISTING FINISHES. MAINTAIN 1-HOUR FIRE RATING.
- USE THE FOLLOWING CONVERSION TABLE TO CONVERT ALL PIPE SIZES FROM ENGLISH UNITS INTO METRIC UNITS.

ENGLISH UNITS	METRIC UNITS
1/2 IN	12.7 mm
3/4 IN	19.1 mm
1 IN	25.4 mm
1-1/4 IN	31.8 mm
1-1/2 IN	38.1 mm
2 IN	50.8 mm
2-1/2 IN	63.5 mm
3 IN	76.2 mm

SHEET NOTES:

- 3/4" HWR, 2" CW, AND 1" HW UP TO FIRST FLOOR. RE: P2.6-1 FOR CONTINUATION.
- EXISTING 2" CW PIPING INSTALLED UNDER THE UTILITIES EXPANSION PROJECT.
- CONNECT 1/2" HW TO EXISTING SINK.
- 3/4" CW UP TO FIRST FLOOR. RE: P2.6-1 FOR CONTINUATION.
- NOT USED.
- RE: P3.1-2 AND P3.1-7 FOR PIPE FIRE STOPPING THROUGH WALL DETAILS (FLOOR SIMILAR).
- RE: P3.1-8 FOR FLOOR MOUNTED WATER HEATER PIPING DETAIL.
- NOT USED.
- CONNECT 1/2" CW ONTO EXISTING TRAP PRIMER HEADER AND ROUTE BELOW FLOOR.
- ROUTE 1/2" CW TO ELEVATOR PIT FLOOR DRAIN TRAP PRIMER CONNECTION. RE: P2.6-1 FOR CONTINUATION.
- EXISTING FIRE RISER TO BE MODIFIED AND EXTENDED TO SERVICE THE REST OF THE BUILDING. FIRE SPRINKLER CONTRACTOR SHALL DESIGN NEW FIRE PROTECTION SYSTEM PER LOCAL FLOW REQUIREMENTS. FIELD VERIFY EXACT CONDITIONS AND REQUIREMENTS.



REVISION 1

06/13/12

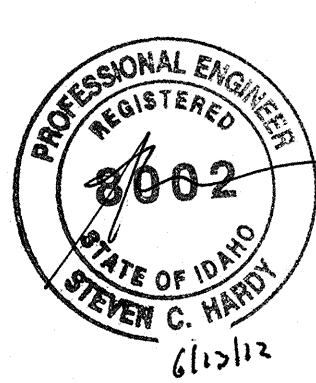
CSHQ

C.W. MOORE PLAZA
250 S. 5TH ST.
BOISE, IDAHO 83702
(208) 343-4635 FAX (208) 343-1858
http://www.cshqa.com

STEVE C. HARDY, P.E.
C.W. MOORE PLAZA
250 S. 5TH ST.
BOISE, IDAHO
PHONE: 208-343-4635 FAX: 208-343-1858

THESE DRAWINGS AND SPECIFICATIONS, AS INSTRUMENTS OF SERVICE, ARE AND SHALL REMAIN THE PROPERTY OF THE ARCHITECT. ENGINEER, WHETHER THE PROJECT FOR WHICH THEY ARE MADE IS EXECUTED OR NOT. THESE DRAWINGS AND SPECIFICATIONS SHALL NOT BE USED BY ANY PERSON OR ENTITY ON OTHER PROJECTS, FOR ADDITION TO THE PROJECT, OR COMPLETION OF THE PROJECT WHEN PHASED WITHOUT THE WRITTEN CONSENT OF CSQA OR ITS AFFILIATES. Copyright © 2012

STAMP



CAD FILE NAME:
531-10-114_P2.5

XREF FILE NAME:
531-10-114_xTBLK
531-10-114_xGRND FLR

DRAWING TITLE
**GROUND LEVEL
WATER & GAS PLAN**

APPROVED: CHIEF OF FACILITY MANAGEMENT SERVICE

APPROVED: MEDICAL CENTER DIRECTOR

PROJECT TITLE
**VAMC
PHASE II: BUILDING 33
RENOVATION**

BUILDING NUMBER
33

CHECKED
SCH

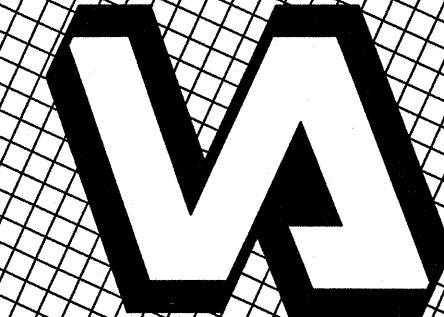
LOCATION
VAMC BOISE, IDAHO

DATE
06/01/12

PROJECT NO.
531-10-114

DRAWING NO.
P2.5

DWG 74 OF 101



DEPARTMENT OF VETERANS AFFAIRS