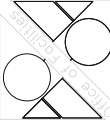


DAMPERS SCHEDULE												
A-EXISTING DAMPERS												
DESC.	DAMP. No.	MANUFACTURER	MODEL NO.	STYLE	DIMENSIONS		PLATE SIZE		MTG.	SCALE	RATING	REMARKS
					A-WIDE	B-HIGH	V	H		CLASH		
A	FD-206	-	-	CR	16" 9"	-	165	X	18	16	3Pr.	EXISTING DAMPER TO REMAIN
A	FD-207	-	-	CR	16" 9"	-	165	X	18	16	3Pr.	EXISTING DAMPER TO REMAIN
A	FD-208	-	-	C	20"	18"	165	X	18	16	3Pr.	EXISTING DAMPER TO REMAIN
A	FD-209	-	-	CR	18" 9"	-	165	X	18	16	3Pr.	EXISTING DAMPER TO REMAIN
A	FD-210	-	-	CR	10" 9"	-	165	X	18	16	3Pr.	EXISTING DAMPER TO REMAIN
A	FD-211	-	-	CR	10" 9"	-	165	X	18	16	3Pr.	EXISTING DAMPER TO REMAIN
A	FD-212	-	-	CR	12" 9"	-	165	X	18	16	3Pr.	EXISTING DAMPER TO REMAIN
A	FD-213	-	-	C	8"	6"	165	X	18	16	3Pr.	EXISTING DAMPER TO REMAIN
A	FD-214	-	-	C	14"	10"	165	X	18	16	3Pr.	EXISTING DAMPER TO REMAIN
A	FD-215	-	-	CR	10" 9"	-	165	X	18	16	3Pr.	EXISTING DAMPER TO REMAIN
A	FD-216	-	-	CR	18" 9"	-	165	X	18	16	3Pr.	EXISTING DAMPER TO REMAIN
A	FD-217	-	-	CR	8"	4"	165	X	18	16	3Pr.	EXISTING DAMPER TO REMAIN
B	FD-218	RUISHI CO.	FS300-3	CR	6" 9"	-	165	X	18	16	3Pr.	MA223
B	FD-219	RUISHI CO.	FS300-3	CR	6" 9"	-	165	X	18	16	3Pr.	MA223
A	FD-220	-	-	C	36"	14"	165	X	18	16	3Pr.	EXISTING DAMPER TO REMAIN
A	FD-221	-	-	C	48"	14"	165	X	18	16	3Pr.	EXISTING DAMPER TO REMAIN
A	FD-222	-	-	C	12"	12"	165	X	18	16	3Pr.	EXISTING DAMPER TO REMAIN
A	FD-223	-	-	C	18"	18"	165	X	18	16	3Pr.	EXISTING DAMPER TO REMAIN
A	FD-224	-	-	C	10"	8"	165	X	18	16	3Pr.	EXISTING DAMPER TO REMAIN
A	FD-225	-	-	C	8"	6"	165	X	18	16	3Pr.	EXISTING DAMPER TO REMAIN
A	FD-226	-	-	C	24"	14"	165	X	18	16	3Pr.	EXISTING DAMPER TO REMAIN
A	FD-227	-	-	C	36"	14"	165	X	18	16	3Pr.	EXISTING DAMPER TO REMAIN
A	FD-228	-	-	C	14"	14"	165	X	18	16	3Pr.	EXISTING DAMPER TO REMAIN
A	FD-229	-	-	C	14"	10"	165	X	18	16	3Pr.	EXISTING DAMPER TO REMAIN
A	FD-230	-	-	C	12"	8"	165	X	18	16	3Pr.	EXISTING DAMPER TO REMAIN
A	FD-231	-	-	C	24"	14"	165	X	18	16	3Pr.	EXISTING DAMPER TO REMAIN
A	FD-232	-	-	C	12"	8"	165	X	18	16	3Pr.	EXISTING DAMPER TO REMAIN
A	FD-233	-	-	CR	10" 9"	-	165	X	18	16	3Pr.	EXISTING DAMPER TO REMAIN
A	FD-234	-	-	CR	12" 9"	-	165	X	18	16	3Pr.	EXISTING DAMPER TO REMAIN
A	FD-235	-	-	C	12"	22"	165	X	18	16	3Pr.	EXISTING DAMPER TO REMAIN
A	FD-236	-	-	C	8"	6"	165	X	18	16	3Pr.	EXISTING DAMPER TO REMAIN
A	FD-237	-	-	C	24"	8"	165	X	18	16	3Pr.	EXISTING DAMPER TO REMAIN
A	FD-238	-	-	CR	18" 9"	-	165	X	18	16	3Pr.	EXISTING DAMPER TO REMAIN
A	FD-239	-	-	CR	10" 9"	-	165	X	18	16	3Pr.	EXISTING DAMPER TO REMAIN
A	FD-240	-	-	C	8"	4"	165	X	18	16	3Pr.	EXISTING DAMPER TO REMAIN
A	FD-241	-	-	C	8"	6"	165	X	18	16	3Pr.	EXISTING DAMPER TO REMAIN
A	FD-242	-	-	CR	10" 9"	-	165	X	18	16	3Pr.	EXISTING DAMPER TO REMAIN
A	FD-243	-	-	CR	9" 9"	-	165	X	18	16	3Pr.	EXISTING DAMPER TO REMAIN
A	FD-244	-	-	CR	9" 9"	-	165	X	18	16	3Pr.	EXISTING DAMPER TO REMAIN
A	FD-245	-	-	CR	18" 9"	-	165	X	18	16	3Pr.	EXISTING DAMPER TO REMAIN
A	FD-246	-	-	CR	18" 9"	-	165	X	18	16	3Pr.	EXISTING DAMPER TO REMAIN
A	FD-247	-	-	C	18"	12"	165	X	18	16	3Pr.	EXISTING DAMPER TO REMAIN
A	FD-248	-	-	CR	10" 9"	-	165	X	18	16	3Pr.	EXISTING DAMPER TO REMAIN
B	FD-249	-	-	C	24"	14"	165	X	18	16	3Pr.	EXISTING DAMPER TO REMAIN
B	FD-250	RUISHI CO.	FS300-3	C	12" 9"	-	165	X	18	16	3Pr.	MA223
A	FD-251	-	-	C	14"	12"	165	X	18	16	3Pr.	EXISTING DAMPER TO REMAIN
A	FD-252	-	-	CR	9" 9"	-	165	X	18	16	3Pr.	EXISTING DAMPER TO REMAIN
A	FD-253	-	-	CR	10" 9"	-	165	X	18	16	3Pr.	EXISTING DAMPER TO REMAIN
A	FD-254	-	-	C	20"	18"	165	X	18	16	3Pr.	EXISTING DAMPER TO REMAIN
B	FD-251	RUISHI CO.	FS300-3	C	24"	18"	165	X	18	16	3Pr.	MA223
A	FD-252	-	-	C	8"	6"	165	X	18	16	3Pr.	EXISTING DAMPER TO REMAIN
A	FD-253	-	-	CR	9" 9"	-	165	X	18	16	3Pr.	EXISTING DAMPER TO REMAIN
A	FD-254	-	-	C	10"	8"	165	X	18	16	3Pr.	EXISTING DAMPER TO REMAIN
B	FD-251	RUISHI CO.	FS300-3	C	24"	18"	165	X	18	16	3Pr.	MA223
A	FD-252	-	-	C	8"	6"	165	X	18	16	3Pr.	EXISTING DAMPER TO REMAIN
A	FD-253	-	-	CR	9" 9"	-	165	X	18	16	3Pr.	EXISTING DAMPER TO REMAIN
B	FD-254	RUISHI CO.	FS300-3	C	20"	18"	165	X	18	16	3Pr.	MA223
A	FD-255	-	-	C	8"	4"	165	X	18	16	3Pr.	EXISTING DAMPER TO REMAIN
A	FD-256	-	-	C	8"	4"	165	X	18	16	3Pr.	EXISTING DAMPER TO REMAIN
B	FD-257	RUISHI CO.	FS300-3	CR	24"	18"	165	X	18	16	3Pr.	MA223
A	FD-258	-	-	C	7"	11"	165	X	18	16	3Pr.	MA223
A	FD-259	-	-	C	14"	12"	165	X	18	16	3Pr.	EXISTING DAMPER TO REMAIN
B	FD-260	RUISHI CO.	FS300-3	C	20"	18"	165	X	18	16	3Pr.	MA223
A	FD-261	-	-	C	10"	8"	165	X	18	16	3Pr.	EXISTING DAMPER TO REMAIN
B	FD-262	RUISHI CO.	FS300-3	C	10"	8"	165	X	18	16	3Pr.	MA223
A	FD-263	-	-	CR	11"	9"	165	X	18	16	3Pr.	EXISTING DAMPER TO REMAIN
B	FD-264	RUISHI CO.	FS300-3	CR	6" 9"	-	165	X	18	16	3Pr.	MA223
A	FD-265	-	-	CR	6" 9"	-	165	X	18	16	3Pr.	EXISTING DAMPER TO REMAIN

DAMPERS SCHEDULE														
DESIG.	DAMPER No.	MANUFACTURER	MODEL NO.	STYLE	DIMENSIONS		MTL.		SLIDE LENGTH	RATING	ACTUATOR MODEL	REMARKS		
					A-WIDE	B-HIGH	FLASK LINE TEMP.	V					H	
A	FD-406	-	-	C	8"	4"	165	X	1	18	16	3#.	-	EXISTING DAMPER TO REMAIN
A	FD-407	-	-	CR	8"	4"	165	X	1	18	16	3#.	-	EXISTING DAMPER TO REMAIN
A	FD-408	-	-	C	28"	12"	165	X	1	18	16	3#.	-	EXISTING DAMPER TO REMAIN
A	FD-409	-	-	CR	6"	9"	165	X	1	18	16	3#.	-	EXISTING DAMPER TO REMAIN
B	FD-501	RUJIN CO.	FSB00-3	C	16"	11"	165	X	1	18	16	3#.	-	EXISTING DAMPER TO REMAIN
A	FD-502	-	-	CR	12"	9"	165	X	1	18	16	3#.	-	EXISTING DAMPER TO REMAIN
B	FD-503	RUJIN CO.	FSB00-3	C	26"	10"	165	X	1	18	16	3#.	-	EXISTING DAMPER TO REMAIN
A	FD-504	-	-	CR	7 1/2"	9"	165	X	1	18	16	3#.	-	EXISTING DAMPER TO REMAIN
A	FD-505	-	-	CR	6"	9"	165	X	1	18	16	3#.	-	EXISTING DAMPER TO REMAIN
A	FD-506	-	-	CR	9 1/2"	16"	165	X	1	18	16	3#.	-	EXISTING DAMPER TO REMAIN
A	FD-507	-	-	CR	9 1/2"	16"	165	X	1	18	16	3#.	-	EXISTING DAMPER TO REMAIN
A	FD-508	RUJIN CO.	FSB00-3	C	20"	9"	165	X	1	18	16	3#.	-	EXISTING DAMPER TO REMAIN
A	FD-509	-	-	CR	9"	16"	165	X	1	18	16	3#.	-	EXISTING DAMPER TO REMAIN
B	FD-510	RUJIN CO.	FSB00-3	C	20"	9"	165	X	1	18	16	3#.	-	EXISTING DAMPER TO REMAIN
A	FD-511	-	-	CR	16"	9"	165	X	1	18	16	3#.	-	EXISTING DAMPER TO REMAIN
B	FD-601	RUJIN CO.	FSB00-3	C	20"	14"	165	X	1	18	16	3#.	-	EXISTING DAMPER TO REMAIN
A	FD-602	-	-	CR	12"	9"	165	X	1	18	16	3#.	-	EXISTING DAMPER TO REMAIN
A	FD-603	-	-	CR	7 1/2"	9"	165	X	1	18	16	3#.	-	EXISTING DAMPER TO REMAIN
B	FD-604	RUJIN CO.	FSB00-3	CR	12"	9"	165	X	1	18	16	3#.	-	EXISTING DAMPER TO REMAIN
B	FD-605	RUJIN CO.	FSB00-3	C	12"	10"	165	X	1	18	16	3#.	-	EXISTING DAMPER TO REMAIN
B	FD-606	RUJIN CO.	FSB00-3	C	12"	10"	165	X	1	18	16	3#.	-	EXISTING DAMPER TO REMAIN
A	FD-607	RUJIN CO.	FSB00-3	CR	6"	9"	165	X	1	18	16	3#.	-	EXISTING DAMPER TO REMAIN
A	FD-608	-	-	CR	6"	9"	165	X	1	18	16	3#.	-	EXISTING DAMPER TO REMAIN
A	FD-609	-	-	CR	6"	9"	165	X	1	18	16	3#.	-	EXISTING DAMPER TO REMAIN
A	FD-610	-	-	CR	6"	9"	165	X	1	18	16	3#.	-	EXISTING DAMPER TO REMAIN
A	FD-611	-	-	CR	6"	9"	165	X	1	18	16	3#.	-	EXISTING DAMPER TO REMAIN
B	FD-612	RUJIN CO.	FSB00-3	C	26"	12"	165	X	1	18	16	3#.	-	EXISTING DAMPER TO REMAIN
A	FD-613	-	-	CR	6"	9"	165	X	1	18	16	3#.	-	EXISTING DAMPER TO REMAIN
A	FD-614	-	-	CR	9 1/2"	16"	165	X	1	18	16	3#.	-	EXISTING DAMPER TO REMAIN
B	FD-615	RUJIN CO.	FSB00-3	C	16"	10"	165	X	1	18	16	3#.	-	EXISTING DAMPER TO REMAIN
A	FD-701	-	-	C	20"	14"	165	X	1	18	16	3#.	-	EXISTING DAMPER TO REMAIN
A	FD-702	-	-	CR	12"	9"	165	X	1	18	16	3#.	-	EXISTING DAMPER TO REMAIN
A	FD-703	-	-	CR	7 1/2"	9"	165	X	1	18	16	3#.	-	EXISTING DAMPER TO REMAIN
A	FD-704	-	-	C	13"	12"	165	X	1	18	16	3#.	-	EXISTING DAMPER TO REMAIN
A	FD-705	-	-	CR	6"	9"	165	X	1	18	16	3#.	-	EXISTING DAMPER TO REMAIN
A	FD-706	-	-	CR	6"	9"	165	X	1	18	16	3#.	-	EXISTING DAMPER TO REMAIN
A	FD-707	-	-	CR	6"	9"	165	X	1	18	16	3#.	-	EXISTING DAMPER TO REMAIN
A	FD-708	-	-	CR	6"	9"	165	X	1	18	16	3#.	-	EXISTING DAMPER TO REMAIN
A	FD-709	-	-	C	16"	10"	165	X	1	18	16	3#.	-	EXISTING DAMPER TO REMAIN
B	FD-710	RUJIN CO.	FSB00-3	C	20"	14"	165	X	1	18	16	3#.	-	EXISTING DAMPER TO REMAIN
A	FD-802	-	-	CR	12"	9"	165	X	1	18	16	3#.	-	EXISTING DAMPER TO REMAIN
A	FD-803	-	-	CR	7 1/2"	9"	165	X	1	18	16	3#.	-	EXISTING DAMPER TO REMAIN
B	FD-804	RUJIN CO.	FSB00-3	C	13"	12"	165	X	1	18	16	3#.	-	EXISTING DAMPER TO REMAIN
B	FD-805	RUJIN CO.	FSB00-3	CR	6"	9"	165	X	1	18	16	3#.	-	EXISTING DAMPER TO REMAIN
A	FD-806	-	-	CR	6"	9"	165	X	1	18	16	3#.	-	EXISTING DAMPER TO REMAIN
A	FD-807	-	-	CR	6"	9"	165	X	1	18	16	3#.	-	EXISTING DAMPER TO REMAIN
A	FD-808	-	-	CR	6"	9"	165	X	1	18	16	3#.	-	EXISTING DAMPER TO REMAIN
B	FD-809	RUJIN CO.	FSB00-3	C	26"	12"	165	X	1	18	16	3#.	-	EXISTING DAMPER TO REMAIN
A	FD-810	-	-	CR	6"	9"	165	X	1	18	16	3#.	-	EXISTING DAMPER TO REMAIN
A	FD-811	-	-	CR	6"	9"	165	X	1	18	16	3#.	-	EXISTING DAMPER TO REMAIN
B	FD-812	RUJIN CO.	FSB00-3	C	16"	10"	165	X	1	18	16	3#.	-	EXISTING DAMPER TO REMAIN
A	FD-901	-	-	C	14"	12"	165	X	1	18	16	3#.	-	EXISTING DAMPER TO REMAIN
A	FD-902	-	-	CR	14"	9"	165	X	1	18	16	3#.	-	EXISTING DAMPER TO REMAIN
A	FD-903	-	-	CR	20"	10"	165	X	1	18	16	3#.	-	EXISTING DAMPER TO REMAIN
B	FD-904	RUJIN CO.	FSB00-3	CR	6"	9"	165	X	1	18	16	3#.	-	EXISTING DAMPER TO REMAIN
A	FD-905	-	-	CR	6"	9"	165	X	1	18	16	3#.	-	EXISTING DAMPER TO REMAIN
A	FD-906	-	-	CR	6"	9"	165	X	1	18	16	3#.	-	EXISTING DAMPER TO REMAIN
A	FD-907	-	-	CR	6"	9"	165	X	1	18	16	3#.	-	EXISTING DAMPER TO REMAIN
A	FD-908	-	-	CR	6"	9"	165	X	1	18	16	3#.	-	EXISTING DAMPER TO REMAIN
A	FD-909	-	-	C	26"	12"	165	X	1	18	16	3#.	-	EXISTING DAMPER TO REMAIN
A	FD-910	-	-	CR	9 1/2"	16"	165	X	1	18	16	3#.	-	EXISTING DAMPER TO REMAIN
A	FD-911	-	-	C	20"	10"	165	X	1	18	16	3#.	-	EXISTING DAMPER TO REMAIN



DATE OCT-14-97
PROJECT NO. 672-98-108
DRAWING NO. M-3.0
9 OF 14 Dwg.

Project Title	RESTORE FIRE BARRIERS		
Building No. ONE	CAD	Designed	
Location	VAMC,SAN JUAN - PUERTO RICO		

APERS SCHEDULES		
	VC	
	CTOR	

Drawing Title







CONSTRUCTION DRAWINGS
RESTORE FIRE BARRIERS
V A MEDICAL CENTER
SAN JUAN, PUERTO RICO

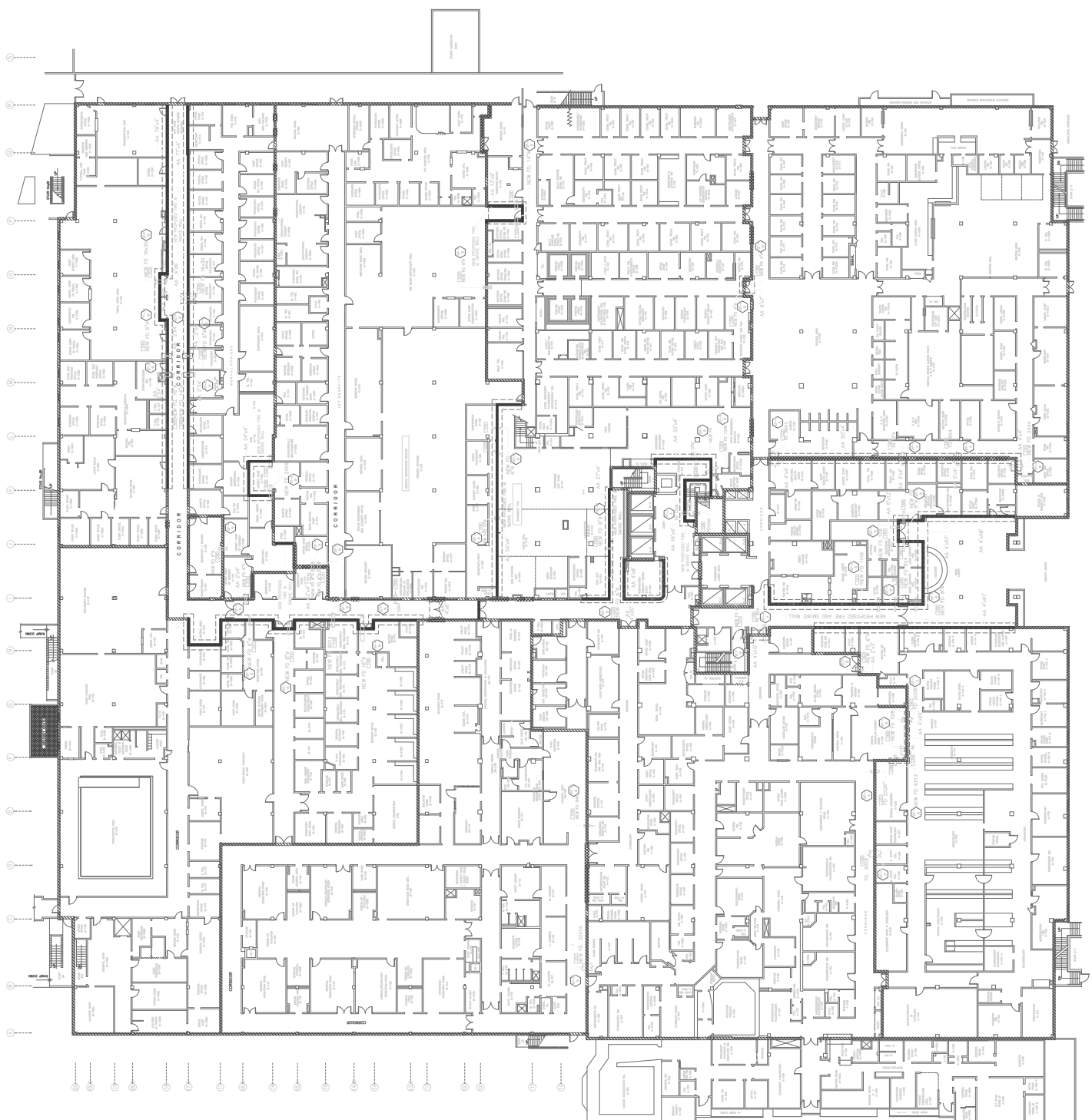
PABLO RIOS VEGA, P.E.
VAMC PROJECT MANAGER

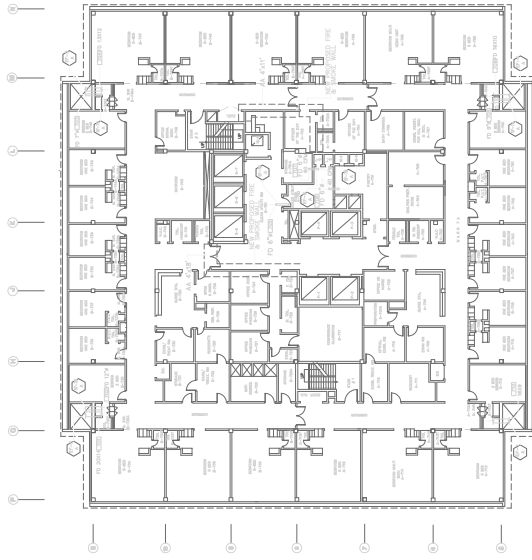
Success



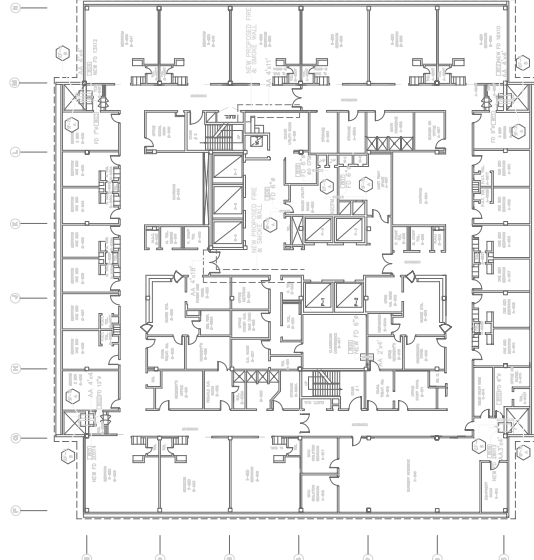
LEGEND:

A A	- ASBESTOS ABANDONED AREA
F.O.	- FIRE DAMPER
	- EXISTING OPENING IN WALL TO BE SEALED
	- EXISTING "T" FIRE WALL
	- NEW PROPOSED FIRE & SMOKE WALL
	- DUCT THRU FIRE WALL
	- DAMPER NO.
	- NEW DOOR

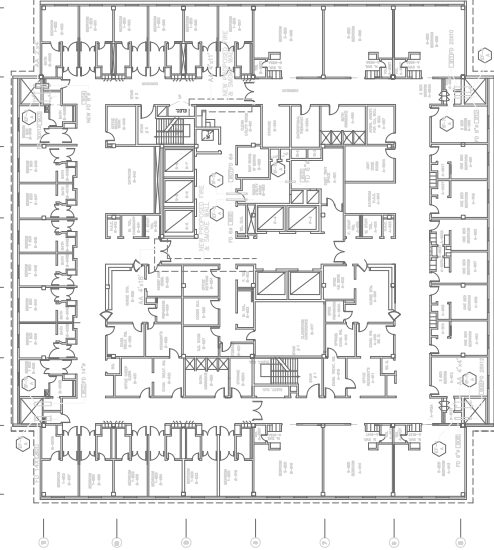




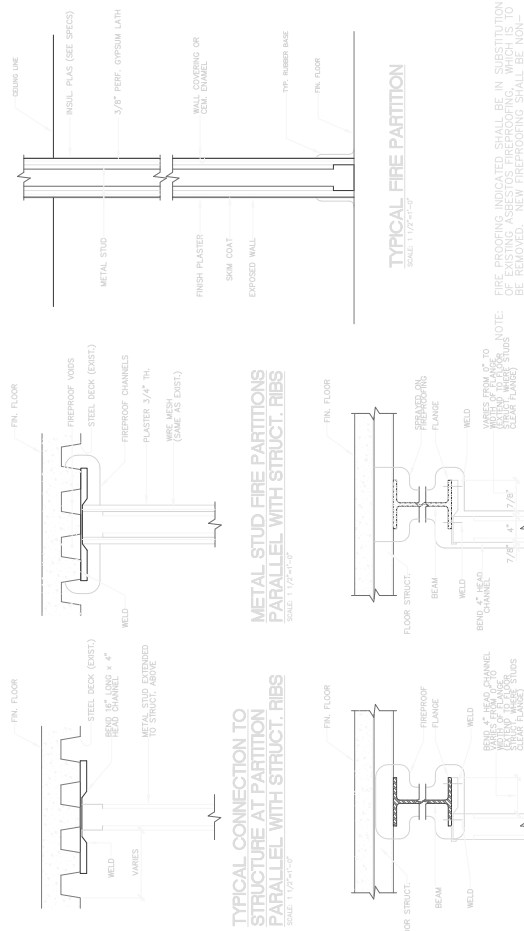
SEVENTH FLOOR PLAN
SCALE: 1/8" = 1'-0"



EIGHTH FLOOR PLAN
SCALE: 1/8" = 1'-0"



NINTH FLOOR PLAN
SCALE: 1/8" = 1'-0"



FIRE PROOFING INDICATED SHALL BE IN SUBSTITUTION OF EXISTING ASBESTOS FIREPROOFING, WHICH IS TO BE REMOVED. NEW FIREPROOFING SHALL BE NON-ASBESTOS.

- DAMPERS LEGEND:**
- EXISTING FIRE DAMPERS TO REMAIN
 - METAL NEW FIRE SMOKE DAMPERS
- LEGEND:**
- EXISTING OPENING
 - EXISTING "ONE WALL"
 - EXISTING "TWO WALL"
 - EXISTING "THREE WALL"
 - EXISTING "FOUR WALL"
 - EXISTING "FIVE WALL"
 - EXISTING "SIX WALL"
 - EXISTING "SEVEN WALL"
 - EXISTING "EIGHT WALL"
 - EXISTING "NINE WALL"
 - EXISTING "TEN WALL"
 - EXISTING "ELEVEN WALL"
 - EXISTING "TWELVE WALL"

- DOUBLE FIRE DOOR AT CORRIDOR - "B" LABEL - 1 3/4" TH SOLID CORE**
SCALE: 3/8" = 1'-0"
- SINGLE FIRE DOOR - "B" LABEL - 1 3/4" TH SOLID CORE**
SCALE: 3/8" = 1'-0"
- DOUBLE FIRE DOOR AT CORRIDOR - "C" LABEL - 1 3/4" TH SOLID CORE**
SCALE: 3/8" = 1'-0"
- SINGLE FIRE DOOR - "C" LABEL - 1 3/4" TH SOLID CORE**
SCALE: 3/8" = 1'-0"

- DOUBLE FIRE DOOR HARDWARE**
- | QTY | DESCRIPTION | QTY | DESCRIPTION |
|-----|-----------------|--------------|--------------|
| 6 | EA BUTTS | TA2314 | 45x45 370MCK |
| 2 | EA EXIT DEVICE | 12-9710-320 | SAR |
| 2 | EA CLOSER | 1231-09-EN | SAR |
| 2 | EA CLOSER | 1231-09-EN | SAR |
| 2 | EA AUTO DROP | 412N-244-260 | PEM |
| 1 | EA ROLL SEED-25 | PEM | |
| 2 | EA ASTRAGAL | 316AS- | PEM |
- SINGLE FIRE DOOR HARDWARE**
- | QTY | DESCRIPTION | QTY | DESCRIPTION |
|-----|-------------|-------------|-------------|
| 3 | EA BUTTS | TA2314 | 45x45 370 |
| 1 | EA LOCKSET | 8237-WL-280 | SAR |
| 1 | EA CLOSER | 1231-0-EN | SAR |

Vicomex Affairs Department

Office of Facilities

600 14th St.
A-25
672-98-106
OCT-14-97

VAMC,SAN JUAN - PUERTO RICO

RESTORE FIRE BARRIERS

SEVENTH, EIGHT & NINTH FLOOR PLAN & DETAILS

CHIEF ENG. SVC.
CENTER DIRECTOR

CONSTRUCTION-DRAWINGS
V-A-MEDICAL-CENTER
RESTORE-FIRE-BARRIERS
SAN-JUAN, PUERTO-RICO

ARCHITECTS
P.L.L.C.
P.L.L.C.
P.L.L.C.

PABLO RIOS VEGA, P.E.
VAMC PROJECT MANAGER
OL. PEREZ DE JESUS, F.
SHEET 01/02