

NORTH
1
C-700
UTILITY PLAN
0 30' 60' 90'

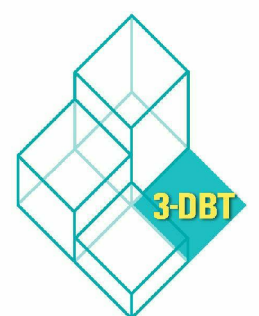
1"=30'

No.	REVISION	DATE
0	ISSUED FOR CONSTRUCTION	12/01/16
1	BID SET	07/29/16



224 SOUTH MICHIGAN AVENUE
SUITE 1400
CHICAGO, ILLINOIS 60604-2595
(312) 554-1400

ARCHITECTURE | PLANNING | INTERIOR DESIGN



6 WEST 6TH STREET
SUITE 800H
ST. PAUL, MN 55102
(651) 788-7461

ARCHITECTURE | COMMISSIONING | SCANNING

PIERCE PINI &
ASSOCIATES

9298 CENTRAL AVE. NE,
SUITE 312
BLAINE, MN 55434
TEL 763.937.1311
FAX 763.937.1354

SEBESTA
Delivering Solutions • Improving Lives
877.706.6858 sebesta.com

DF/
DAMON FARBER
LANDSCAPE ARCHITECTS
401 2nd Avenue North, Suite 410
Minneapolis, MN 55401
p 612.332.7522 f 612.332.0936
www.damonfarber.com

I hereby certify that this plan, specification, or report was prepared by me or under my direct supervision and that I am a duly Licensed Professional Engineer under the laws of the State of Minnesota.
Rhonda S. Porice
Rhonda S. Porice
Date: 11/05/2015 Reg. No. 41333

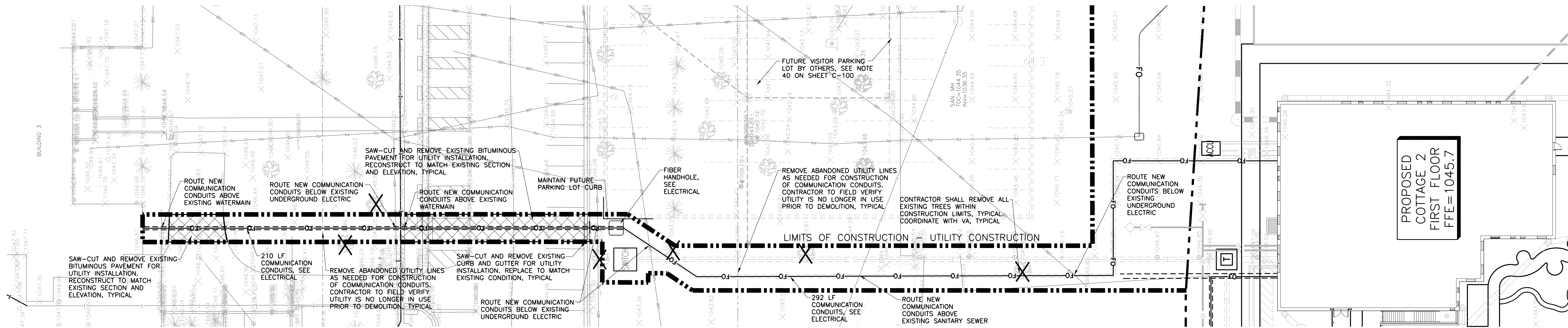
APPROVED: SERVICE LINE DESIGN	DATE
APPROVED: GROUND CONDITIONS	DATE
APPROVED: PROJECTS/SECTION NUMBER	DATE
APPROVED: CHECKED FOR	DATE

APPROVED: DIRECTION/CONTROL/REVISION	DATE
APPROVED: EXISTING/NEW	DATE
APPROVED: TO BE/NOT TO BE	DATE
APPROVED: SAFETY/REMARKS	DATE

UTILITY PLAN
ST. CLOUD VA M.C. COMMUNITY LIVING CENTER COTTAGE #2
DATE: 11/05/2015
DESIGNED BY: RSP
CHECKED BY: ALA
DATE: 11/05/2015

ST. CLOUD VA M.C. COMMUNITY LIVING CENTER COTTAGE #2
PROJECT NO. 656-342
DATE: 11/05/2015
DESIGNED BY: RSP
CHECKED BY: ALA
DATE: 11/05/2015





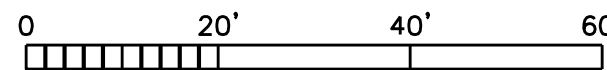
NORTH



1
C-701

COMMUNICATION AND DEMOLITION PLAN

1"=20'



0	ISSUED FOR CONSTRUCTION	12/20/16
	BID SET	07/29/16
No	REVISION	DATE



224 SOUTH MICHIGAN AVENUE
SUITE 1400
CHICAGO, ILLINOIS 60604-2595
(312) 554-1400

ARCHITECTURE | PLANNING | INTERIOR DESIGN



6 WEST 6TH STREET
SUITE 800H
ST. PAUL, MN 55102
(651) 788-7461

ARCHITECTURE | COMMISSIONING | SCANNING

PIERCE PINI &
ASSOCIATES

9298 CENTRAL AVE. NE,
SUITE 312
BLAINE, MN 55434
TEL 763.537.1311
FAX 763.537.1354

SEBESTA
Delivering Solutions • Improving Lives
877.706.6858 sebesta.com

DF/
DAMON FARBER
LANDSCAPE ARCHITECTS
401 2nd Avenue North, Suite 410
Minneapolis, MN 55401
p 612.332.7522 f 612.332.0936
www.damonfarber.com

I hereby certify that this plan, specification,
or report was prepared by me or under my
direct supervision and that I am a duly
Licensed Professional Engineer under the
laws of the State of Minnesota.
Rhonda S. Porice
Rhonda S. Porice
Date: 11/05/2015 Reg. No. 41333

APPROVED: SERVICE LINE ELEVATOR	DATE:
APPROVED: GDS CONTRIBUTION	DATE:
APPROVED: PROJECTS SECTION MANAGER	DATE:
APPROVED: DIRECTOR OF PROJECTS	DATE:

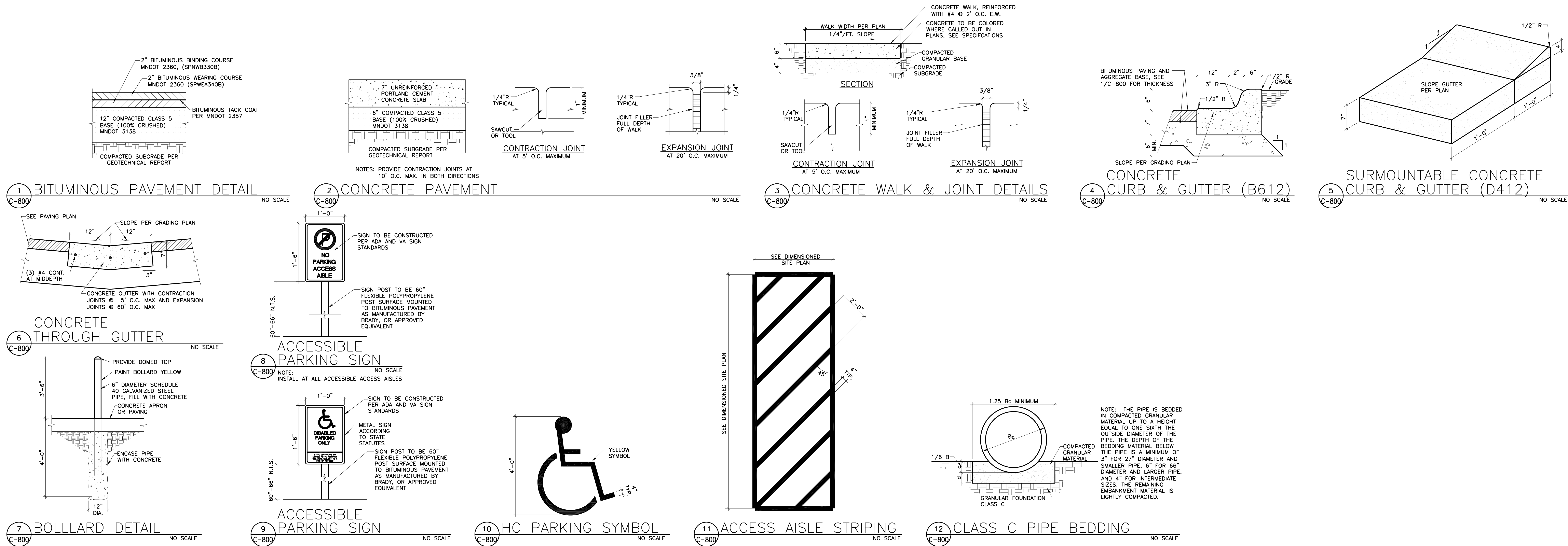
APPROVED: DIRECTION CONTROL BOARD	DATE:
APPROVED: EXISTING POWER	DATE:
APPROVED: TO BE ST. PAUL	DATE:
APPROVED: SAFETY MEASURES	DATE:

PROJECT TITLE: COMMUNICATION PLAN	DATE:
APPROVED: PROJECT TITLE: COMMUNICATION PLAN	DATE:
APPROVED: PROJECT TITLE: COMMUNICATION PLAN	DATE:
APPROVED: PROJECT TITLE: COMMUNICATION PLAN	DATE:

ST. CLOUD VA M.C. COMMUNITY LIVING CENTER COTTAGE #2	PROJECT NO: 656-342
PROJECT NO: 656-342	PROJECT NO: 656-342
PROJECT NO: 656-342	PROJECT NO: 656-342
PROJECT NO: 656-342	PROJECT NO: 656-342

PROJECT NO: 656-342	PROJECT NO: 656-342
PROJECT NO: 656-342	PROJECT NO: 656-342
PROJECT NO: 656-342	PROJECT NO: 656-342
PROJECT NO: 656-342	PROJECT NO: 656-342





0	ISSUED FOR CONSTRUCTION	12/20/16
	BID SET	07/29/16
No	REVISION	DATE

VOA

224 SOUTH MICHIGAN AVENUE
SUITE 1400
CHICAGO, ILLINOIS 60604-2595
(312) 554-1400

ARCHITECTURE | PLANNING | INTERIOR DESIGN

3.031

6 WEST 6TH STREET
SUITE 800H
ST. PAUL, MN 55102
(651) 788-7461

ARCHITECTURE | COMMISSIONING | SCANNING

PIERCE PINI & ASSOCIATES

9298 CENTRAL AVE. NE,
SUITE 312
BLAINE, MN 55434
TEL 763.937.1311
FAX 763.537.1354

SEBESTA

Delivering Solutions • Improving Lives

877.706.6858 sebesta.com

DF/

DAMON FARBER
LANDSCAPE ARCHITECTS

401 2nd Avenue North, Suite 410
Minneapolis, MN 55401
p 612.332.7522 f 612.332.0936
www.damonfarber.com

I hereby certify that this plan, specification, or report was prepared by me or under my direct supervision and that I am a duly Licensed Professional Engineer under the laws of the State of Minnesota.

Rhonda S. Porice

Rhonda S. Porice
Date: 11/05/2015 Reg. No. 41333

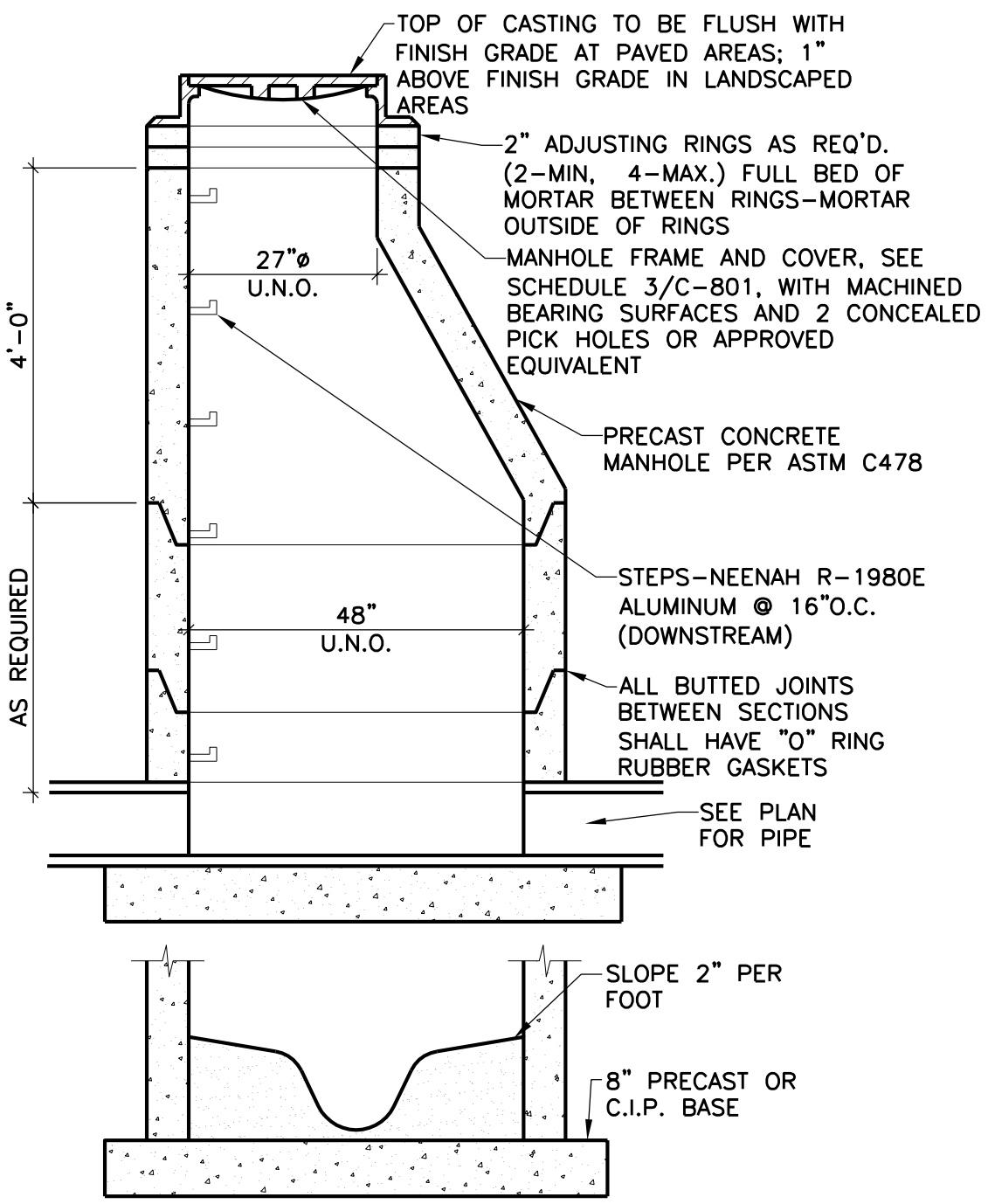
APPROVED: SERVICE LINE ELEVATOR	DATE	APPROVED: DETECTION CONTROL DEVICE	DATE
APPROVED: GDS COLLECTION	DATE	APPROVED: DETECTION DEVICE	DATE
APPROVED: PROJECTS SECTION NUMBER	DATE	APPROVED: DETECT SET POINTS	DATE
APPROVED: DETECTION FRT	DATE	APPROVED: SAFETY STRIPING	DATE

PROJECT TITLE: CIVIL DETAILS	DATE
APPROVED: ST. CLOUD VA M.C. COMMUNITY LIVING CENTER COTTAGE #2	DATE

ST. CLOUD VA M.C. COMMUNITY LIVING CENTER COTTAGE #2	PROJECT NO. 656-342
APPROVED: RSP	APPROVED: ALA
VA MEDICAL CENTER ST. CLOUD, MN 56303	PROJECT NO. C-800

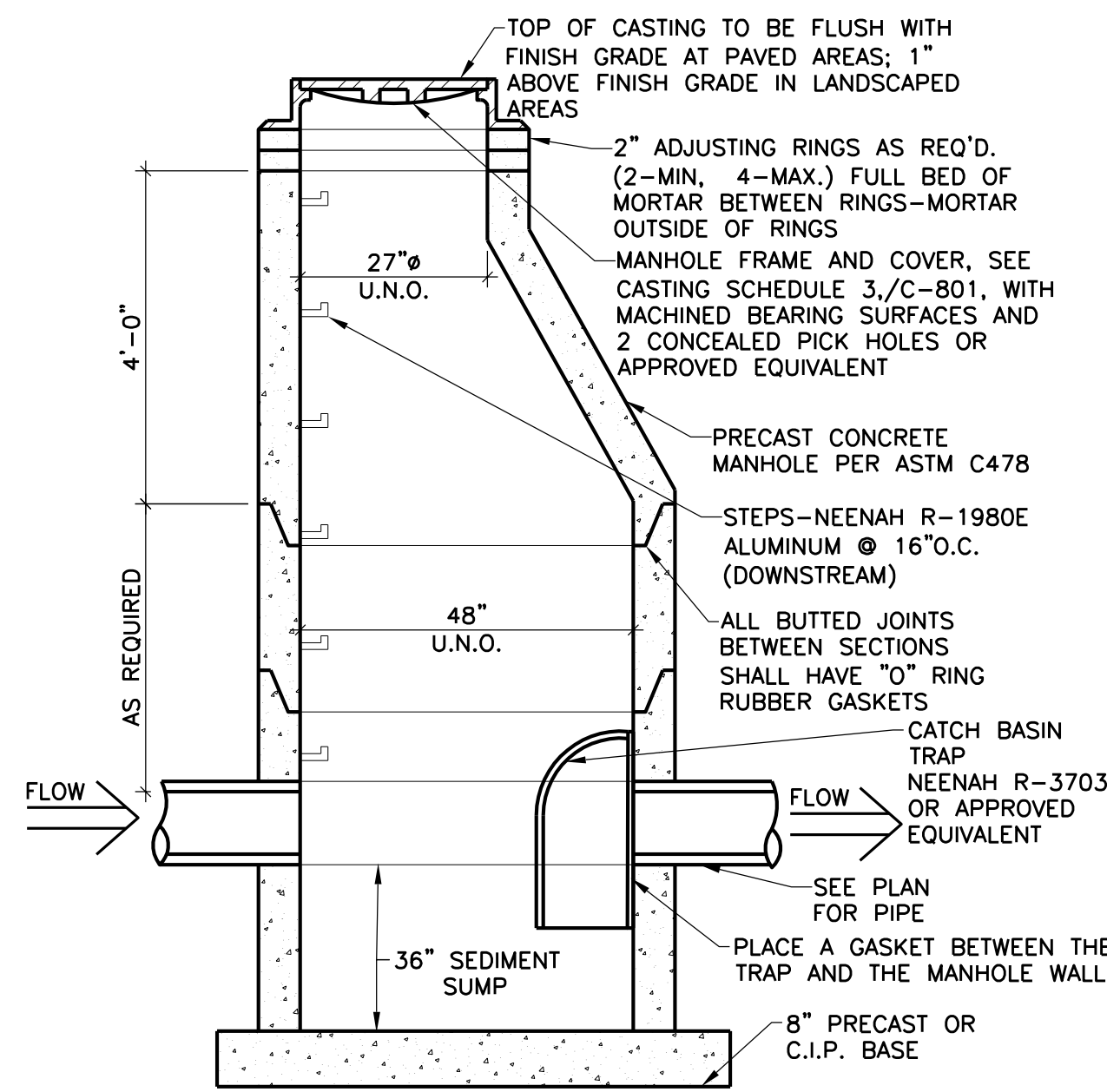
St. Cloud VA Health Care System

Brainerd | Montevideo | Alexandria



- NOTES:
- MANHOLES 8" OR DEEPER - THE PRECAST SECTION IMMEDIATELY BELOW THE CONCRETE SECTION SHALL BE 1'-0" HIGH.
 - PROVIDE STEPS IN MANHOLES OVER 4'-0" IN DEPTH.
 - REINFORCING SHALL BE A MINIMUM OF A SINGLE LINE WIRE FABRIC HAVING AN AREA OF NOT LESS THAN 0.12 SQ. IN. PER FOOT OF HEIGHT.
 - PROVIDE SNAP-IN BOOT AT ALL SANITARY SEWER CONNECTIONS TO MANHOLES.
 - ALL STORM SEWER PIPING RUNS SHALL USE RESILIENT RUBBER JOINTS AT PIPE CONNECTIONS TO CATCH BASINS FOR WATERTIGHT CONNECTION PER PLUMBING CODE.

1 STANDARD SEWER MANHOLE
C-801 NO SCALE

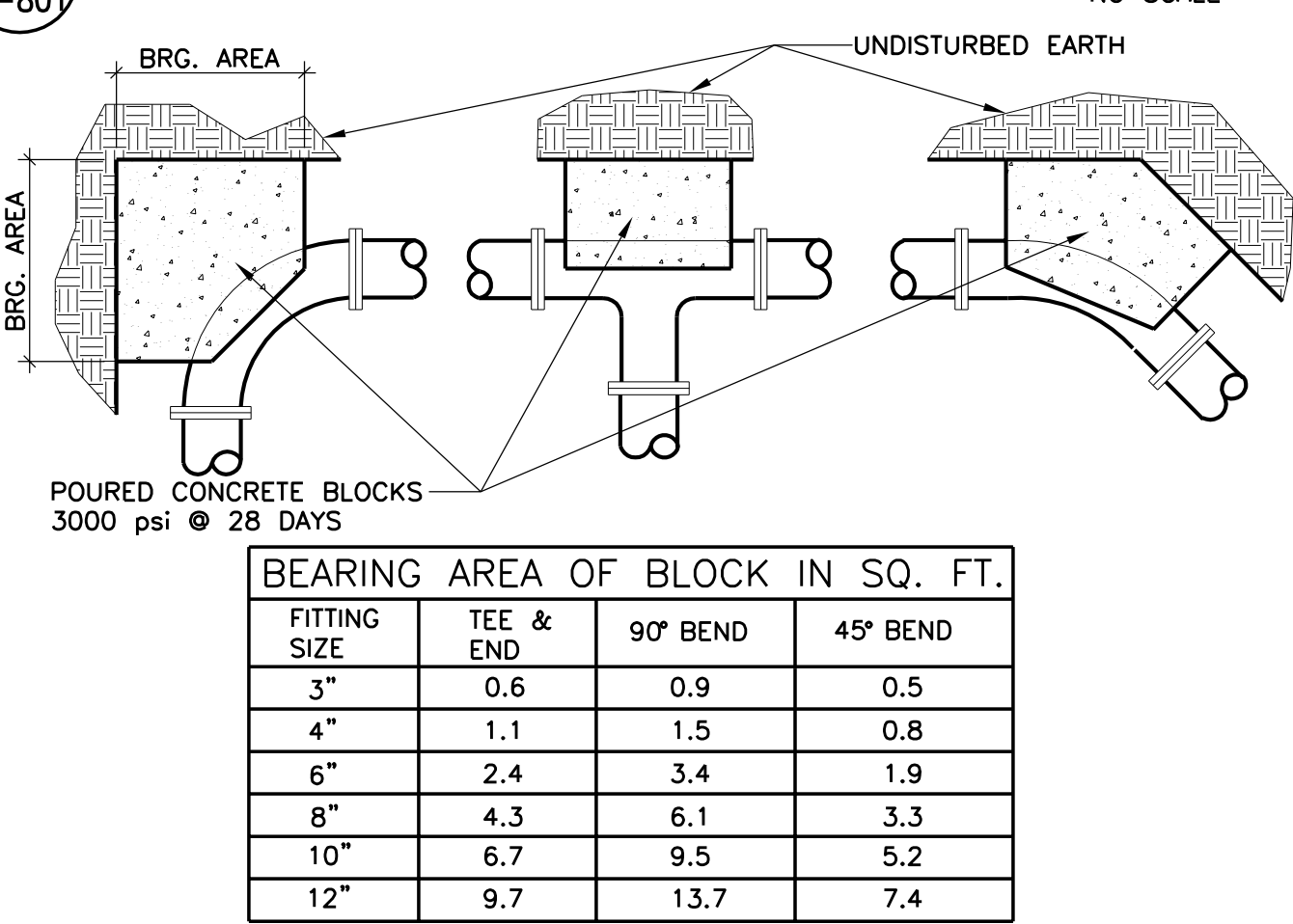


2 CATCH BASIN WITH SUMP
C-801 NO SCALE

CASTING SCHEDULE		
CATCH BASIN/MANHOLE/RISE	GRATE TYPE (NEENAH)	REMARKS
A,C,D	R-3250-1	STORM SEWER CURB INLET
B	R-2571-A	STORM SEWER AREA DRAIN
E,F,H,M,P,Q,R	R-1642	STORM SEWER MANHOLE COVER
G,J,K,L,N	DOWNSPOUT	DRAINS AT BUILDING DOWNSPOUTS, SEE DETAIL 9/C-801
1,2	R-1642	SANITARY SEWER MANHOLE COVER

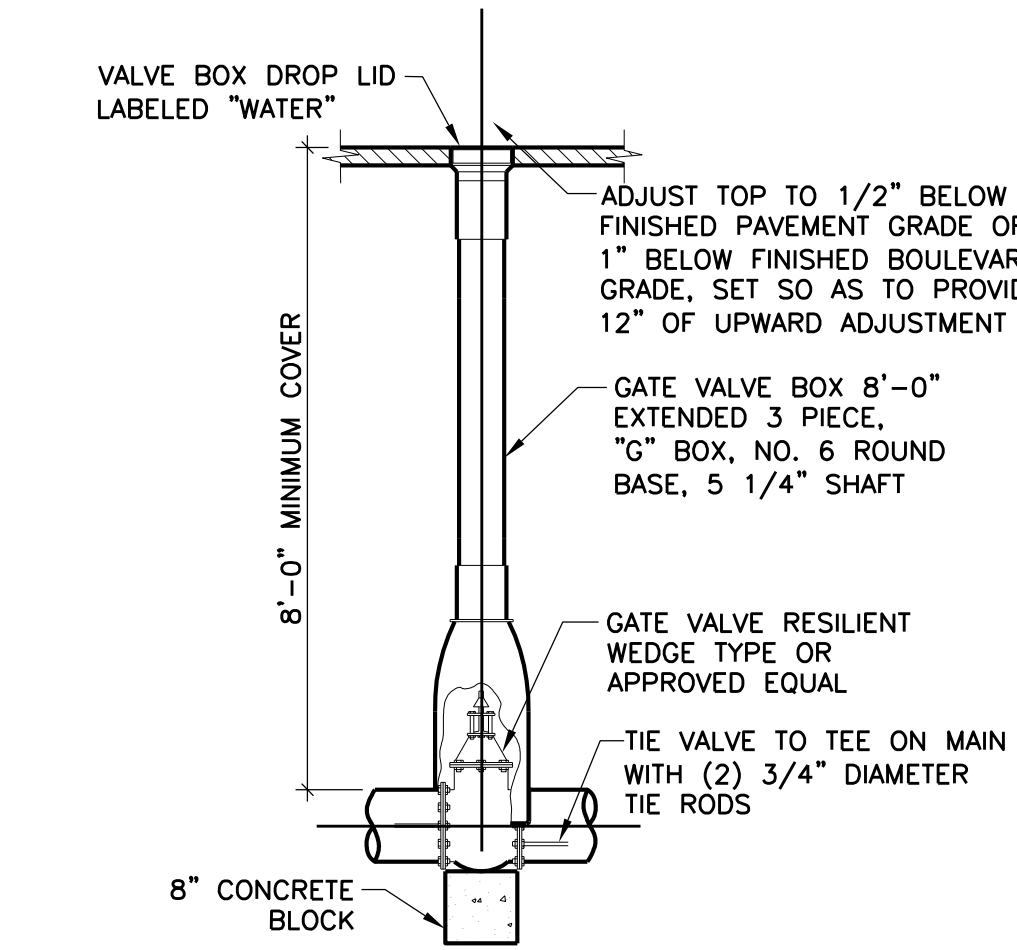
- NOTE:
- CASTINGS SHALL BE NEENAH FOUNDRY CASTINGS OR APPROVED EQUIVALENT, UNLESS NOTED OTHERWISE.
 - CASTINGS SHALL BE STAMPED WITH APPROPRIATE UTILITY NAME ("STORM SEWER", "SANITARY SEWER")

3 CASTING SCHEDULE
C-801 NO SCALE

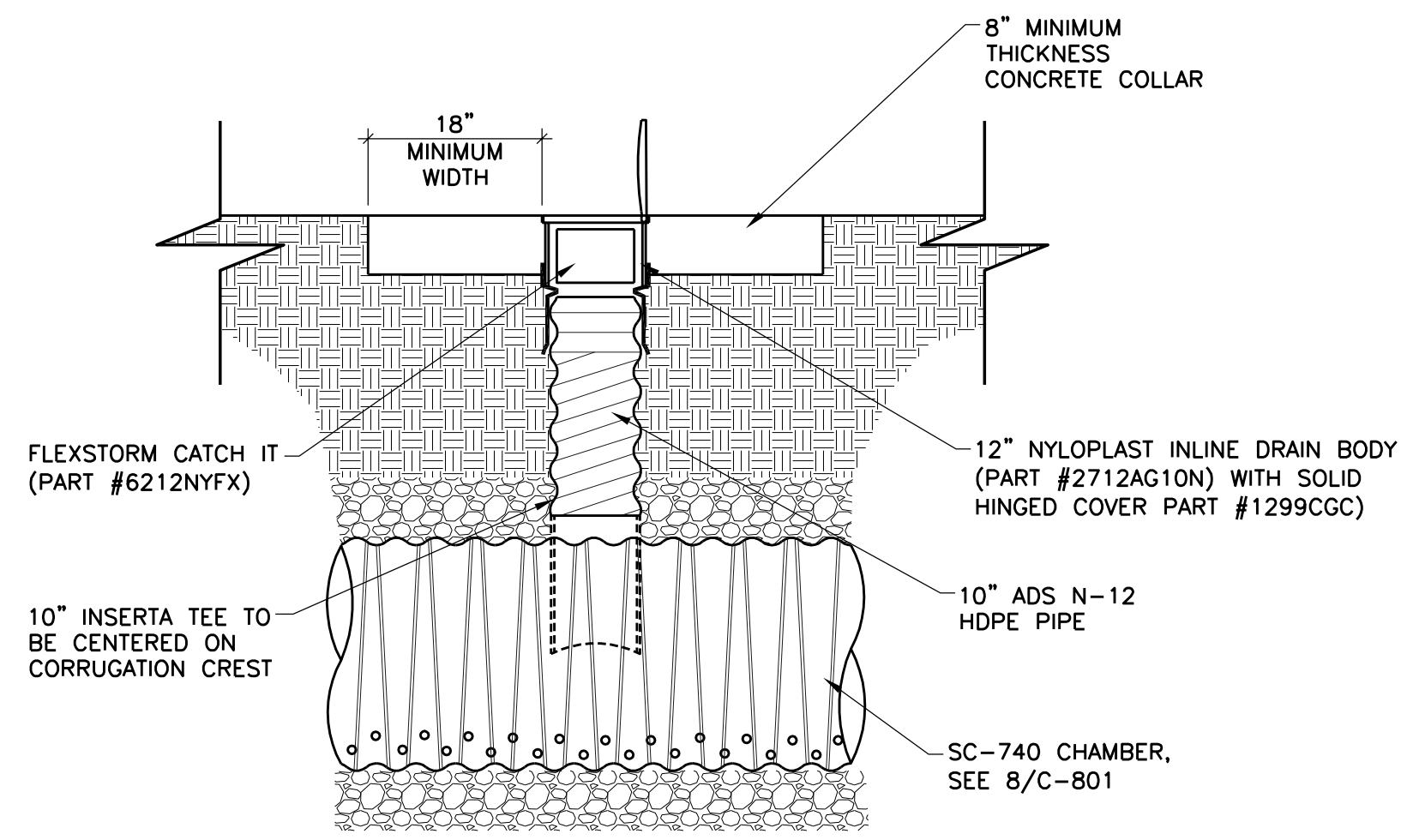


- NOTE:
- CONTRACTOR MAY PROVIDE "MEGALUG" JOINT RESTRAINT AS AN ALTERNATIVE TO CONCRETE THRUST BLOCKS. THE MINIMUM 3 JOINTS EACH SIDE OF FITTING.

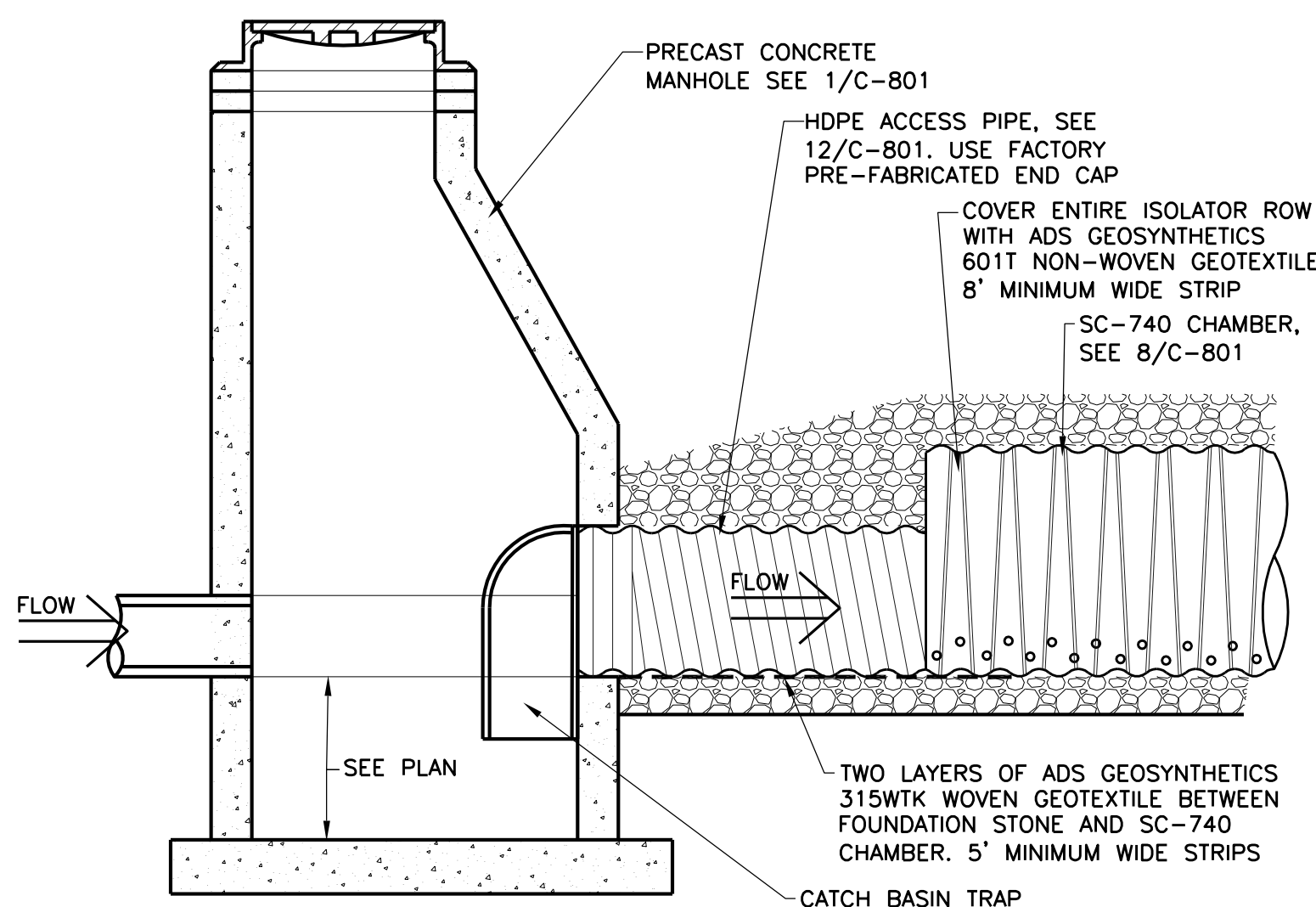
4 TYPICAL THRUST BLOCK DETAIL
C-801 NO SCALE



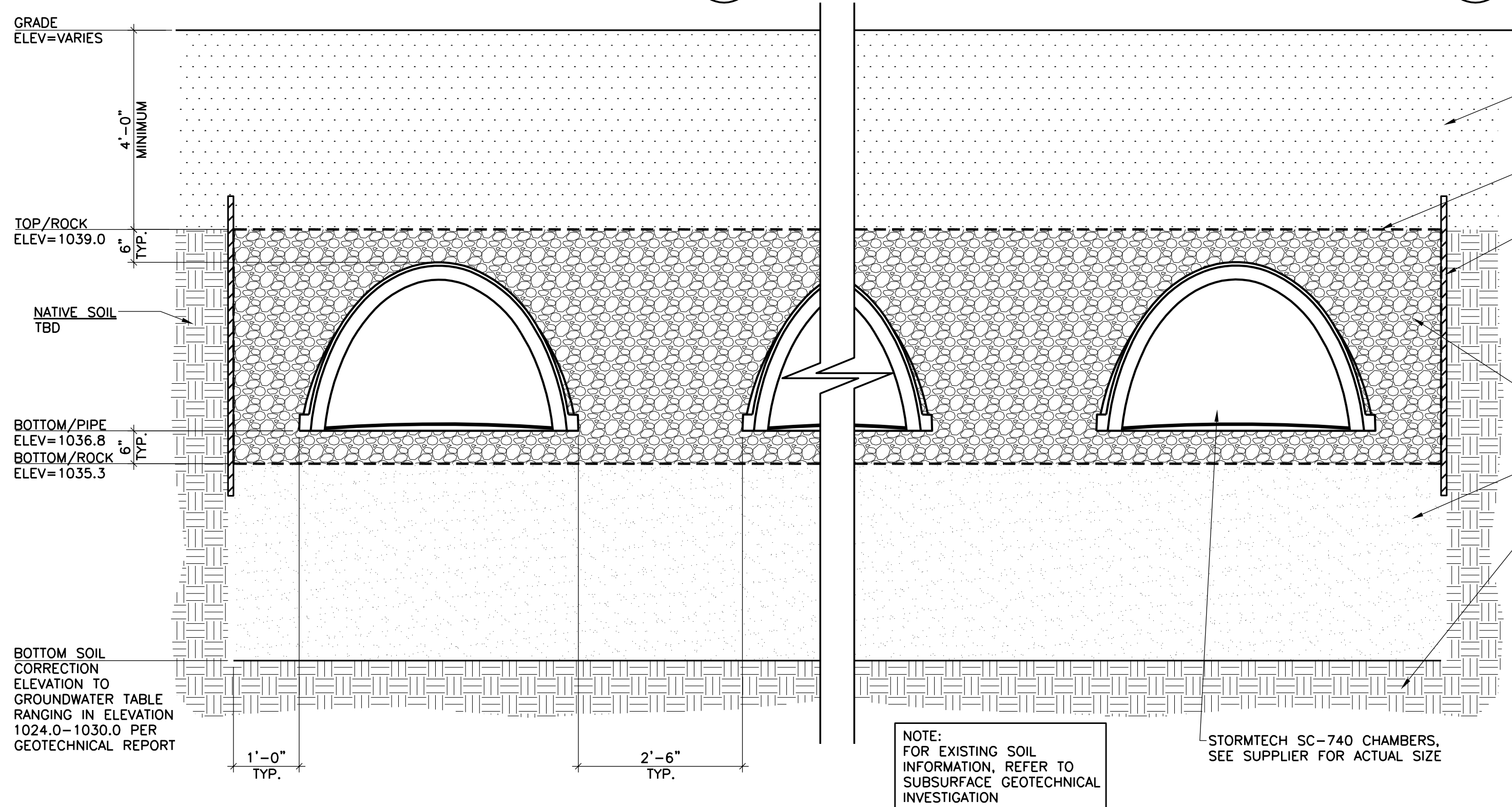
5 GATE VALVE AND BOX
C-801 NO SCALE



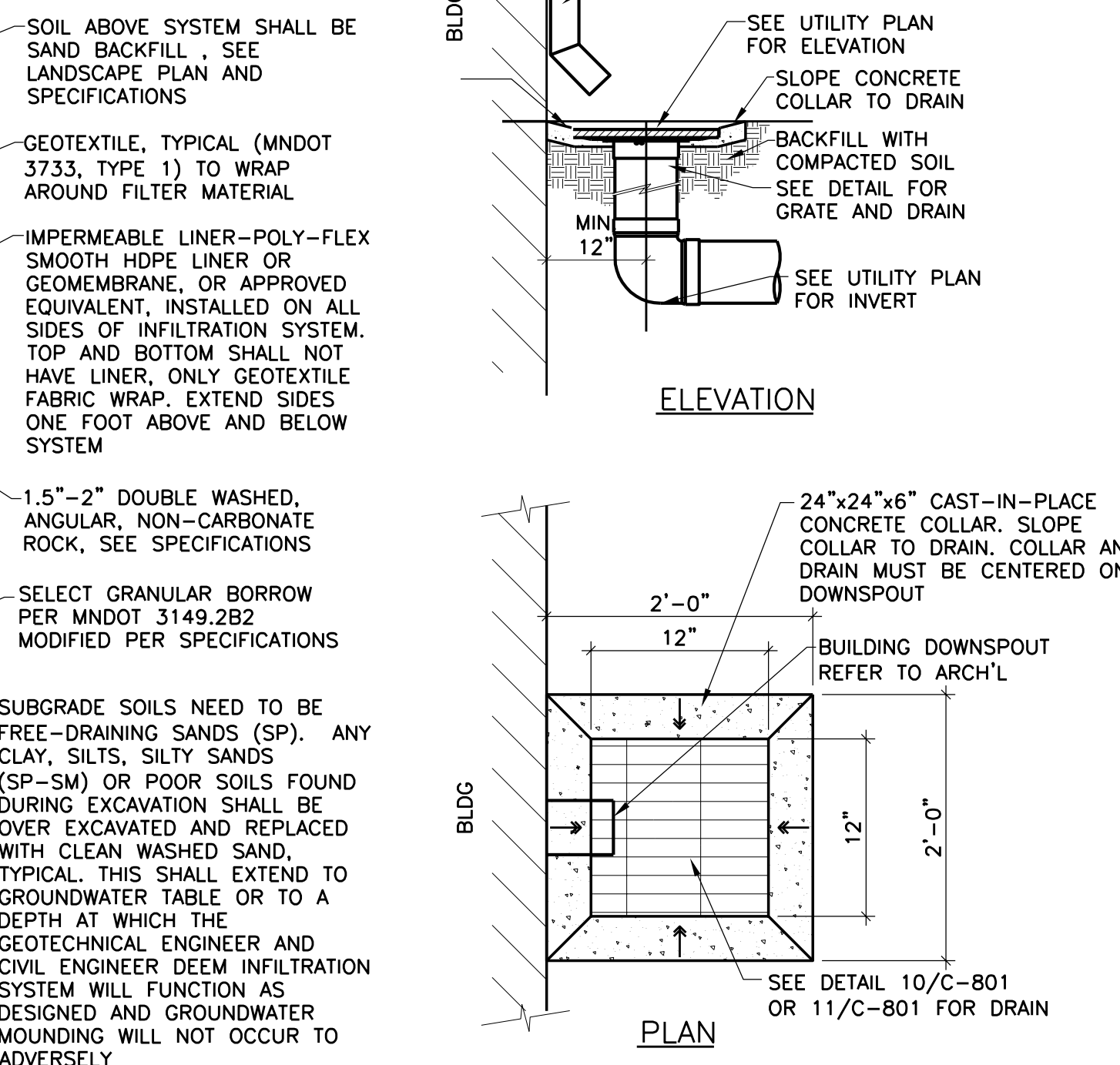
6 STORMTECH INSPECTION PORT DETAIL
C-801 NO SCALE



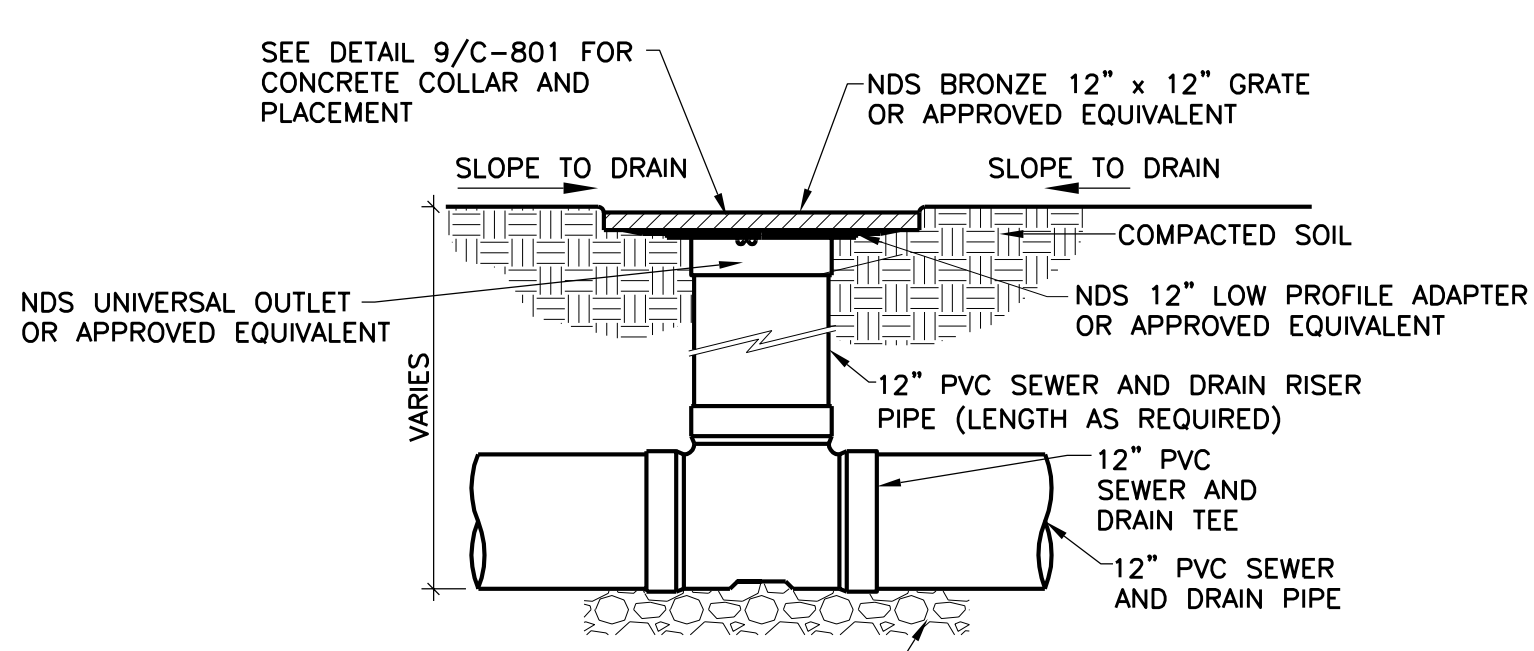
7 STORMTECH ISOLATOR ROW DETAIL
C-801 NO SCALE



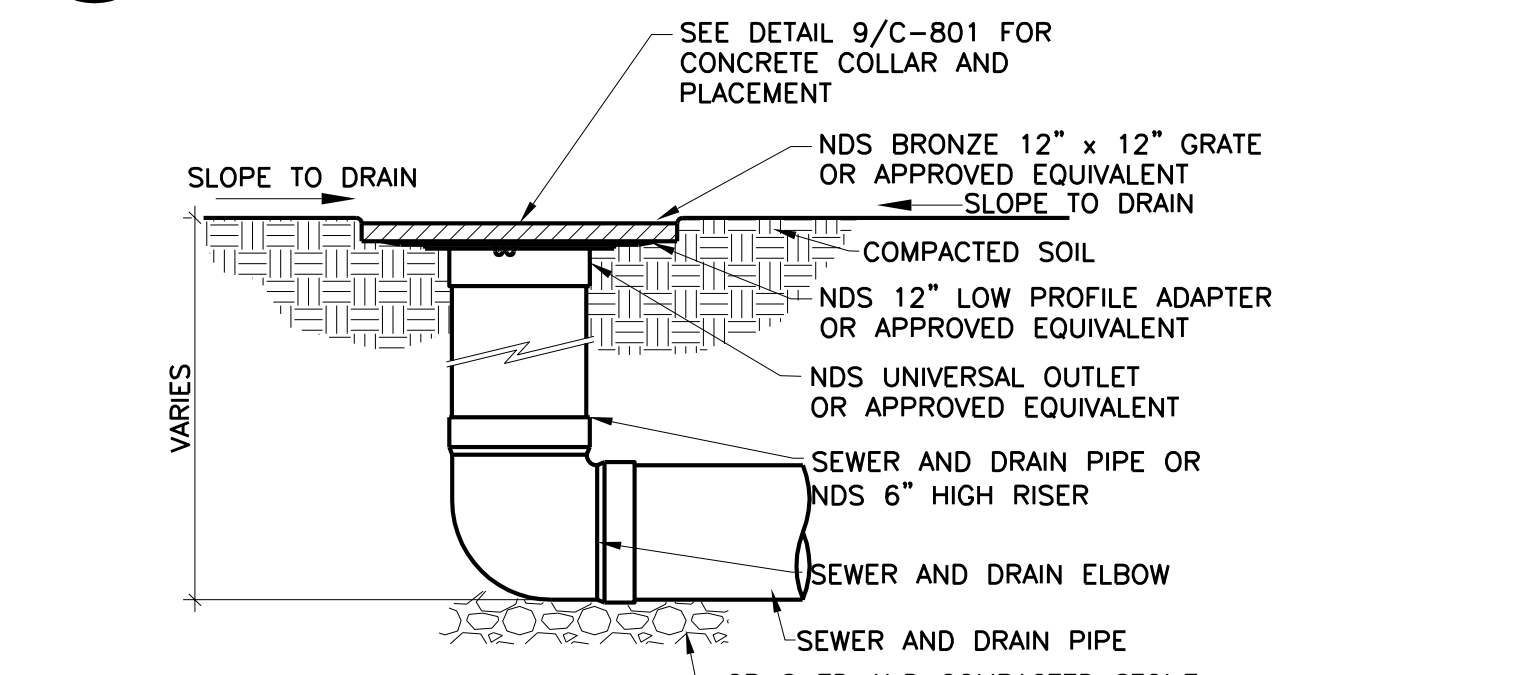
8 UNDERGROUND INFILTRATION SYSTEM - CROSS SECTION STORMTECH
C-801 NOTE: DETAIL INDICATES TWO PIPE SYSTEM BUT MULTIPLE PIPE SYSTEM CROSS-SECTION SHALL BE SIMILAR



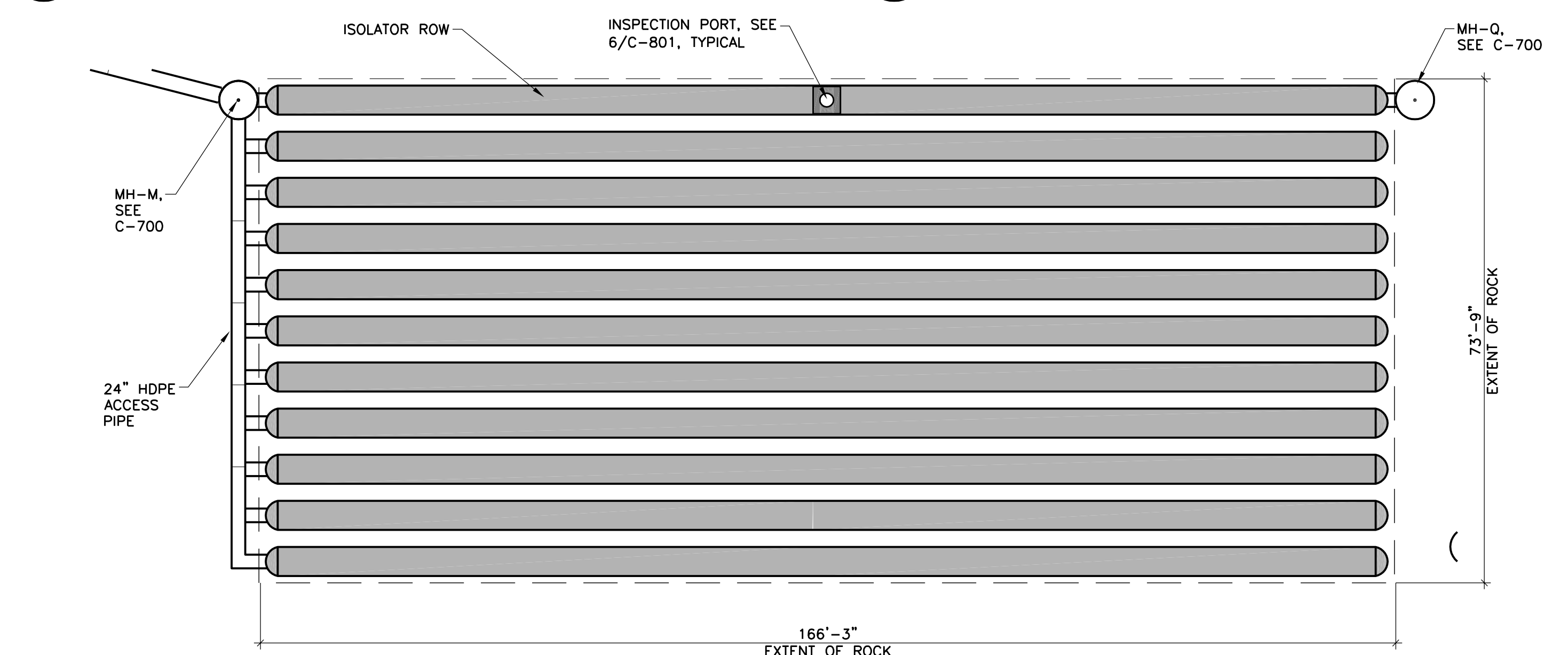
9 AREA DRAIN AT DOWNSPOUT
C-801 NO SCALE



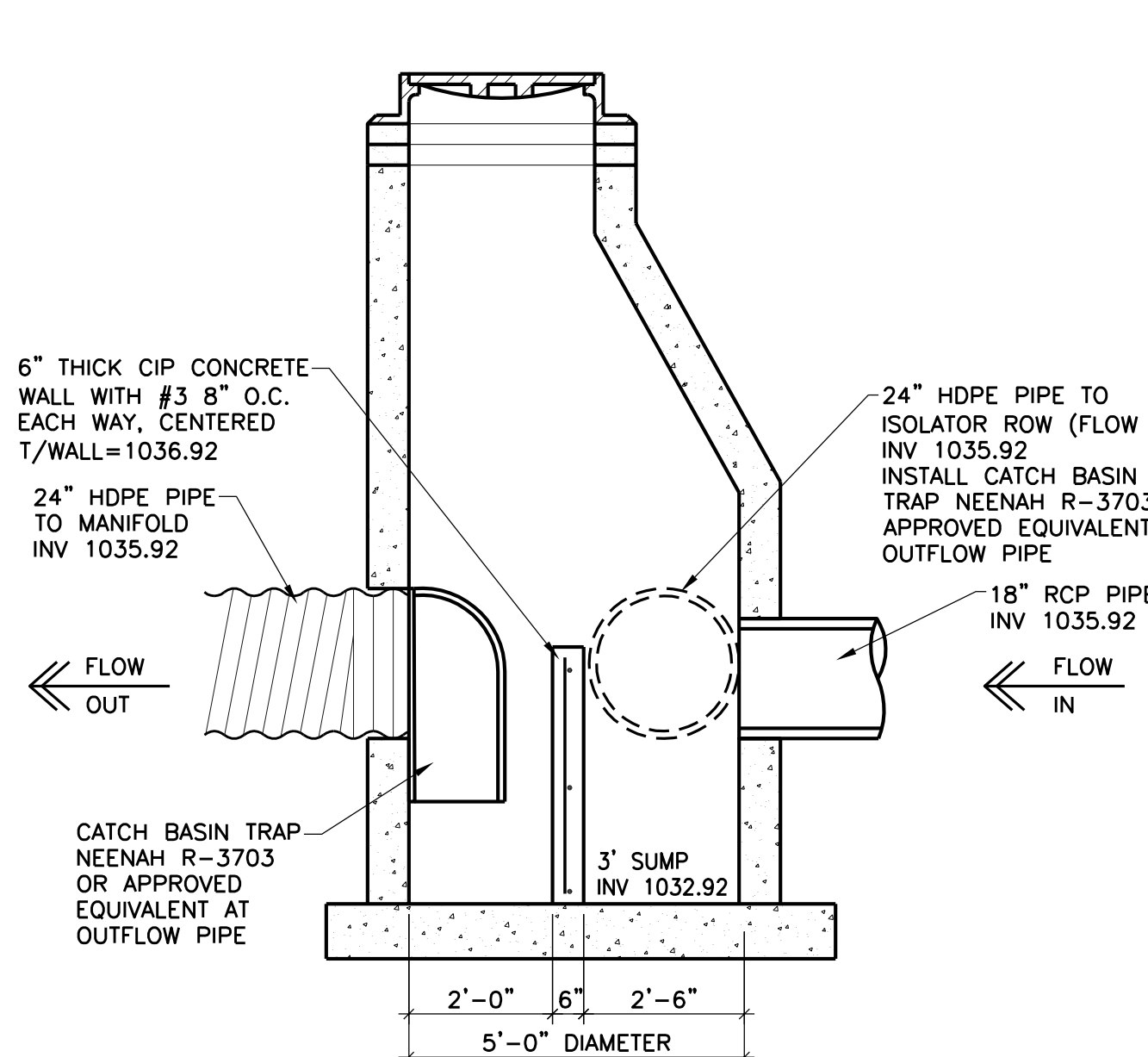
10 12" SQUARE GRATE WITH TEE
C-801 NO SCALE



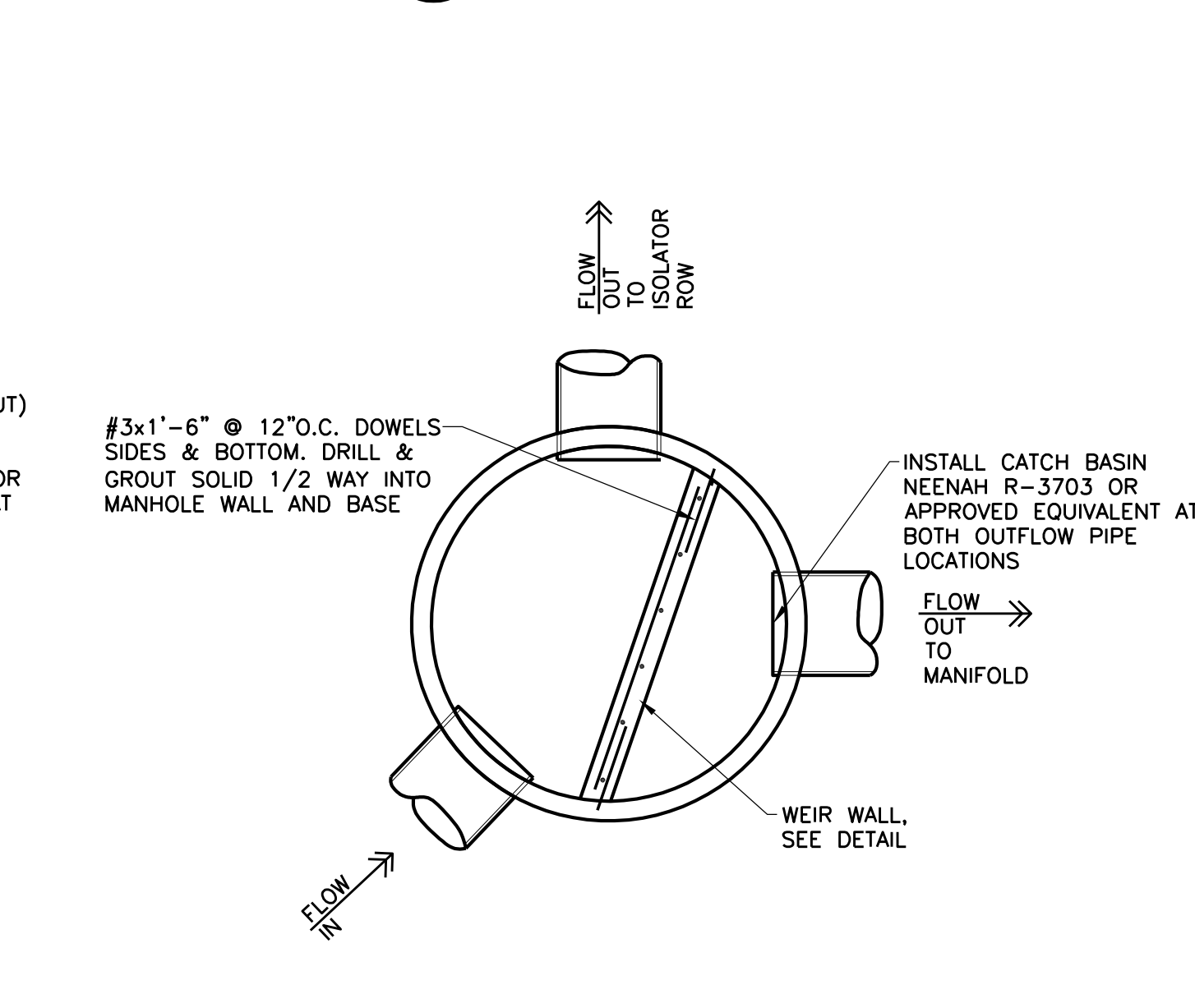
11 12" SQUARE GRATE WITH ELBOW
C-801 NO SCALE



12 UNDERGROUND INFILTRATION SYSTEM - PLAN VIEW
C-801 NO SCALE



13 MANHOLE M SECTION
C-801 NO SCALE



14 MANHOLE M PLAN VIEW
C-801 NO SCALE

No.	REVISION	DATE
0	ISSUED FOR CONSTRUCTION	12/20/16
1	BID SET	07/29/16

VOA

224 SOUTH MICHIGAN AVENUE
SUITE 1400
CHICAGO, ILLINOIS 60604-2595
(312) 554-1400

ARCHITECTURE | PLANNING | INTERIOR DESIGN

3.031

6 WEST 6TH STREET
SUITE 800H
ST. PAUL, MN 55102
(651) 788-7461

ARCHITECTURE | COMMISSIONING | SCANNING

PIERCE PINI & ASSOCIATES

9298 CENTRAL AVE. NE.
SUITE 312
BLAINE, MN 55434
TEL 763.937.1311
FAX 763.537.1354

Delivering Solutions • Improving Lives

877.706.6858 sebesta.com

DF/ DAMON FARBER LANDSCAPE ARCHITECTS

401 2nd Avenue North, Suite 410
Minneapolis, MN 55401
p 612.332.7522 f 612.332.0936
www.damonfarber.com

I hereby certify that this plan, specification, or report was prepared by me or under my direct supervision and that I am a duly Licensed Professional Engineer under the laws of the State of Minnesota.

Rhonda S. Porice

Date: 11/05/2015 Reg. No. 41333

APPROVED: SERVICE LINE ELEVATION	DATE	APPROVED: DETAIL CHECK	DATE
APPROVED: GROUND COLLECTION	DATE	APPROVED: DETAIL CHECK	DATE
APPROVED: PROJECTS SECTION NUMBER	DATE	APPROVED: DETAIL CHECK	DATE
APPROVED: DETAIL CHECK	DATE	APPROVED: DETAIL CHECK	DATE

ST. CLOUD VA M.C. COMMUNITY LIVING CENTER COTTAGE #2	DATE
656-342	DATE

VA MEDICAL CENTER ST. CLOUD, MN 56303	DATE
656-342	DATE

St. Cloud VA Health Care System

Brainerd | Montevideo | Alexandria