

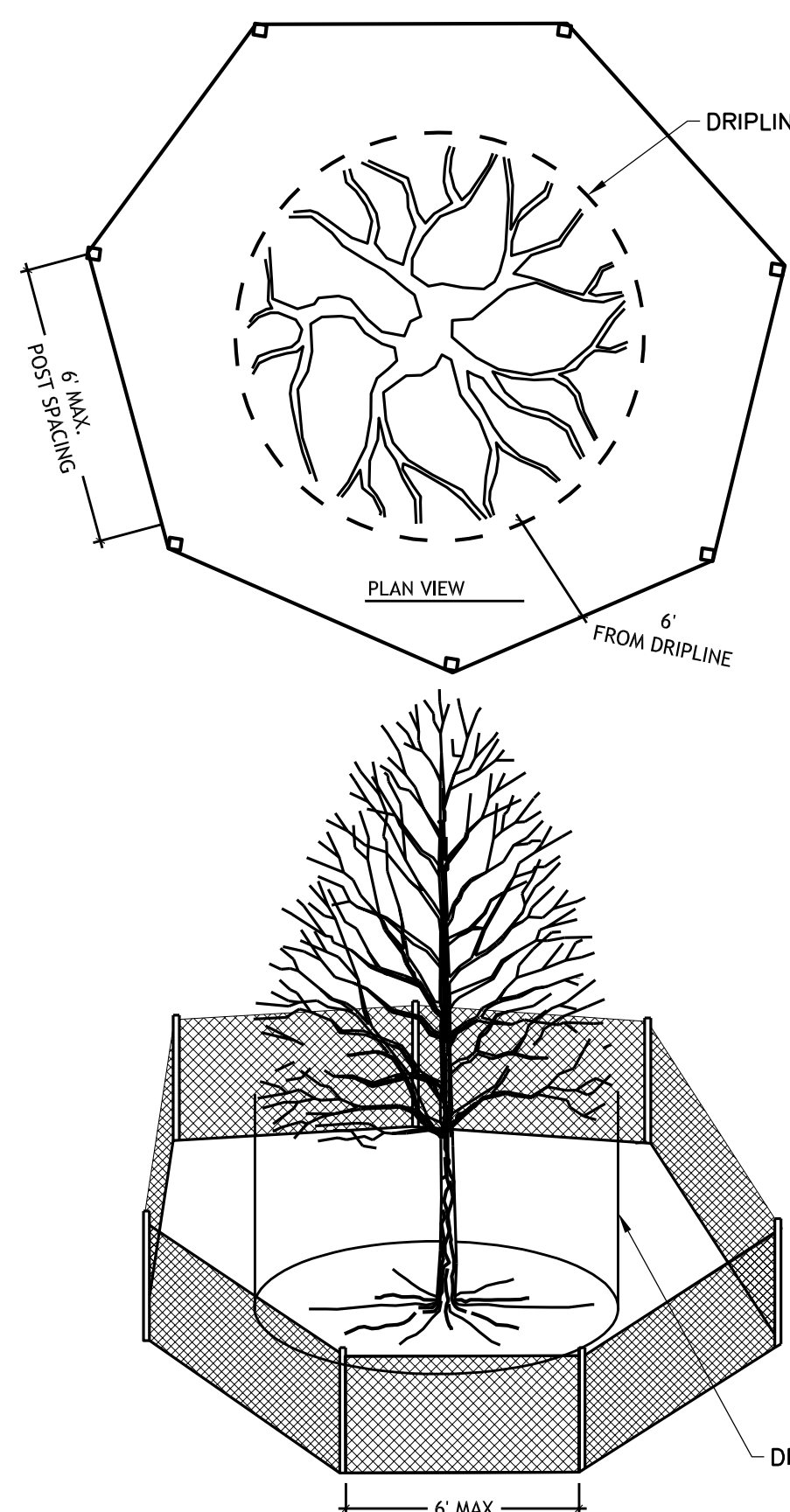
FIGURE 1 TYPICAL INSTALLATION FOR SILT FENCE

TABLE 1 MAXIMUM SLOPE LENGTH AND SLOPE FOR WHICH SILT FENCE IS APPLICABLE

		BY CALCULATION	BY CALCULATION	BY ACCEPTED DESIGN PRACTICES
SLOPE H:V	PERCENT	SILT FENCE STORAGE EQUALS 2 FT FOR A 100-YEAR EVENT	SILT FENCE STORAGE EQUALS 2 FT FOR A 2-YEAR EVENT OR 3 FT FOR A 100-YEAR EVENT	MAXIMUM SLOPE LENGTH
100:1	1%	400 FT	900 FT	100 FT
50:1	2%	200 FT	450 FT	75 FT
25:1	4%	100 FT	225 FT	75 FT
20:1	5%	80 FT	180 FT	75-50 FT
17:1	6%	67 FT	150 FT	50 FT
12.5:1	8%	50 FT	112 FT	50 FT
10:1	10%	40 FT	90 FT	50-25 FT
5:1	20%	20 FT	45 FT	25-15 FT
4:1	25%	16 FT	36 FT	15 FT
3:1	33%	12 FT	27 FT	15 FT
2:1	50%	8 FT	18 FT	15 FT

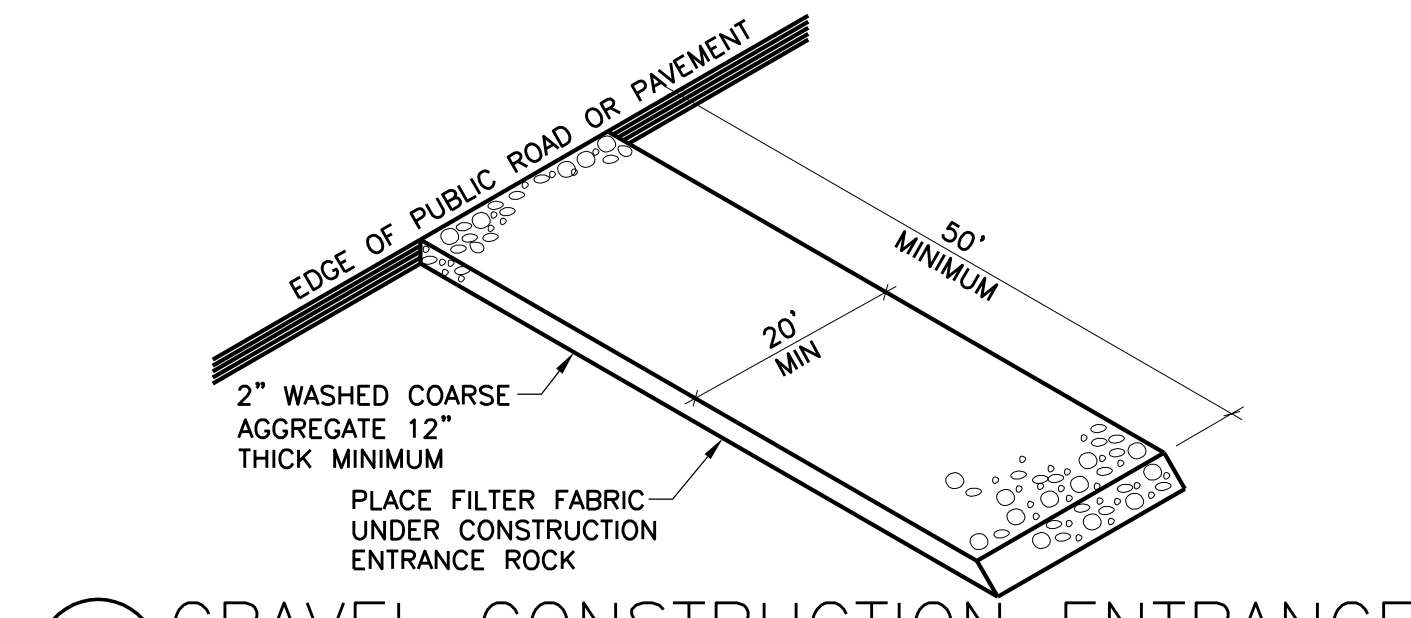
### 1 HEAVY DUTY SILT FENCE DETAIL

C-603 NO SCALE



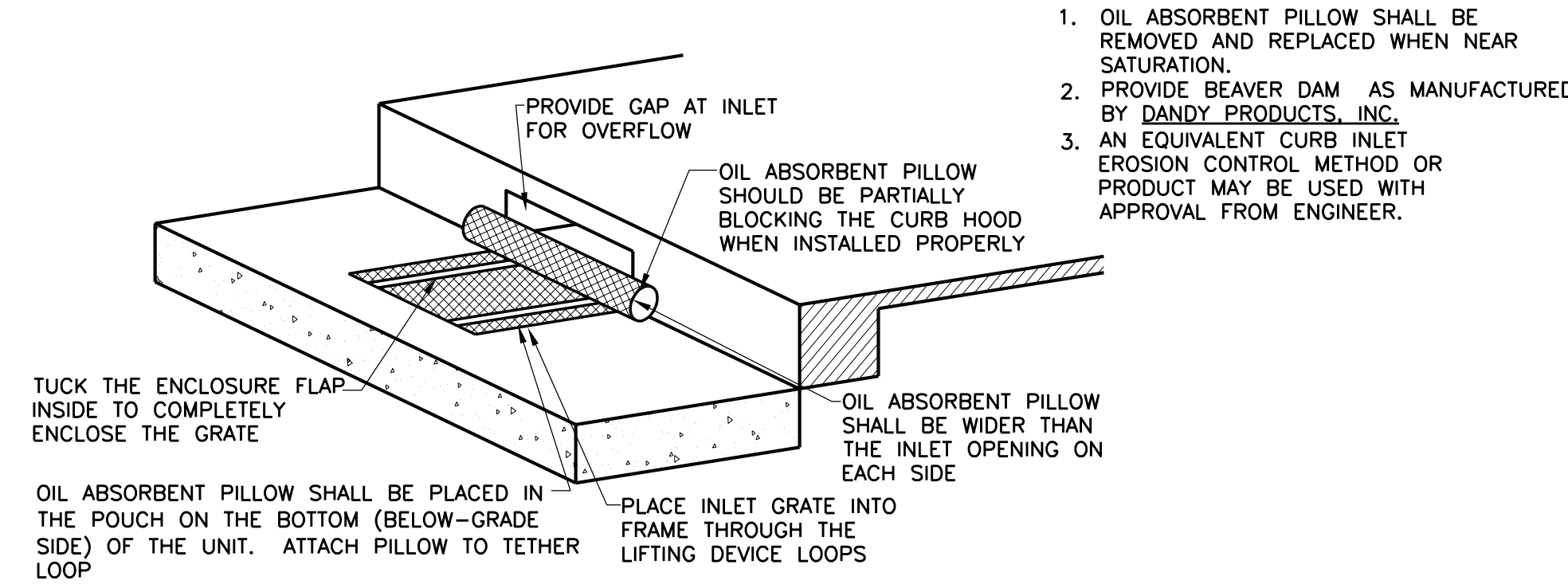
### 2 TREE PROTECTION DETAIL

C-603 NO SCALE



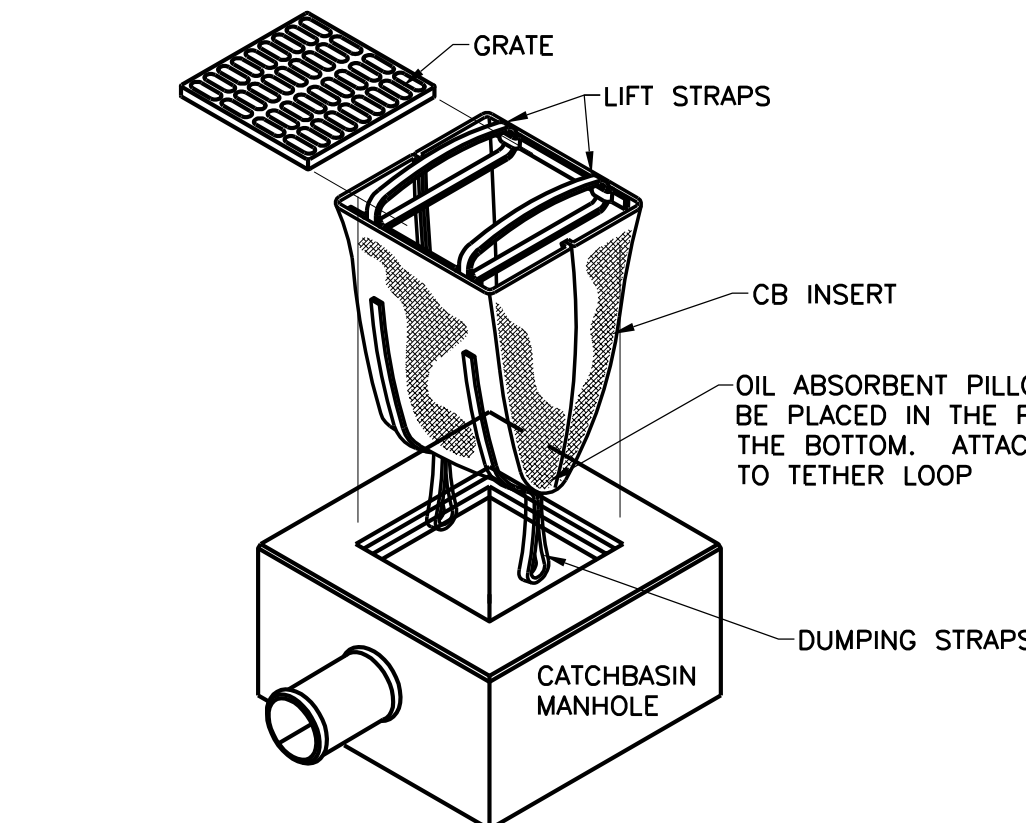
### 3 GRAVEL CONSTRUCTION ENTRANCE

C-603 NO SCALE



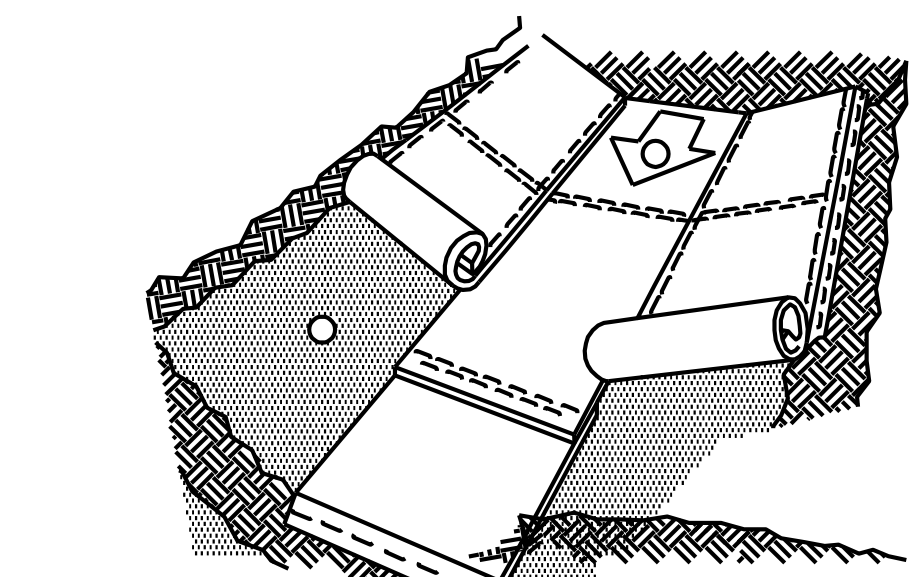
### 4 CATCHBASIN CURB BOX INLET EROSION CONTROL

C-603 NO SCALE



### 5 CB INSERT EROSION CONTROL

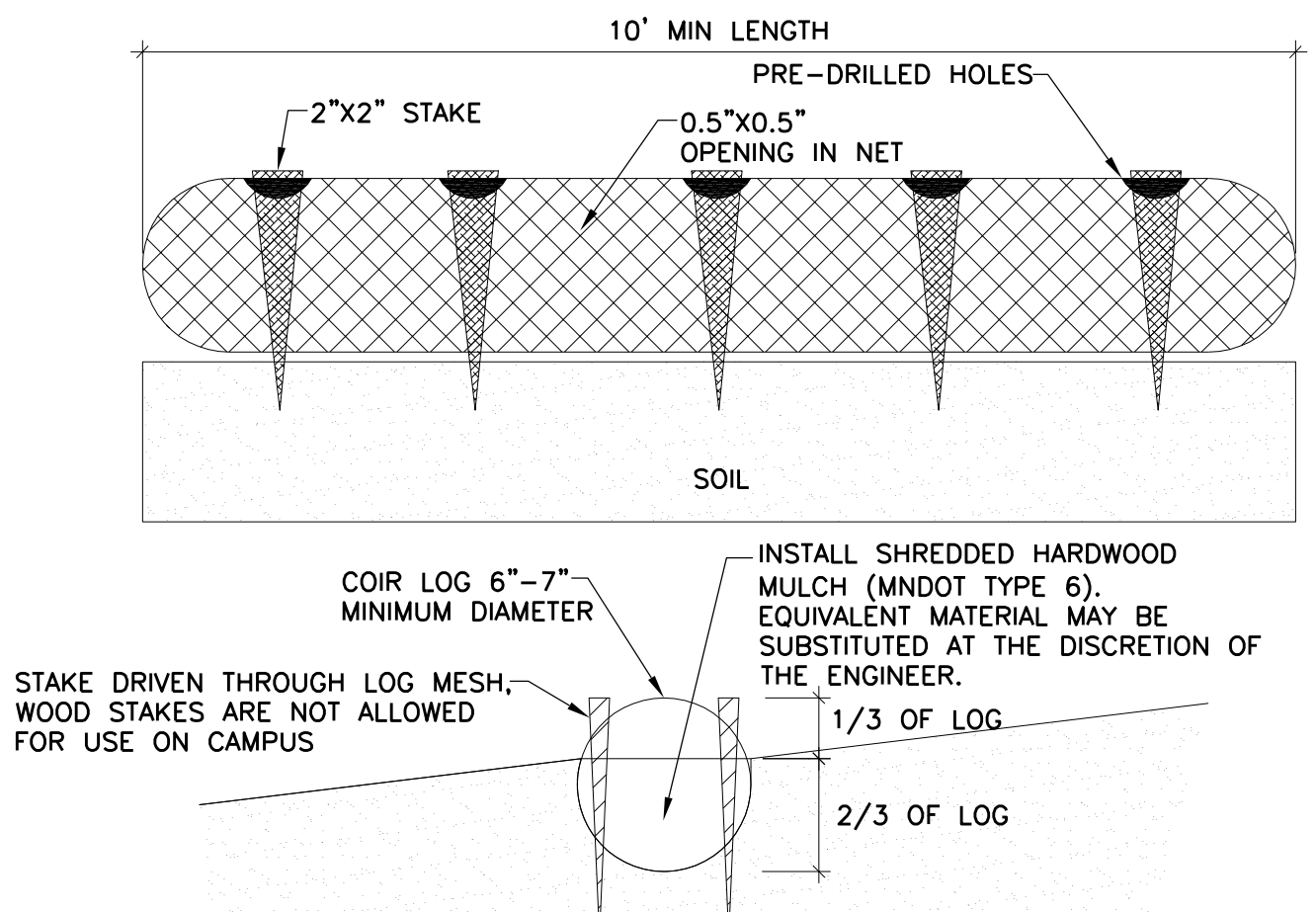
C-603 NO SCALE



- BEFORE INSTALLATION APPLY TOPSOIL, FERTILIZER AND SEED TO SURFACE.
- BEGIN AT THE TOP OF THE CHANNEL, INSTALL MATS BY ANCHORING IN A 6" DEEP BY 6" WIDE TRENCH WITH APPROXIMATELY 12" OF MAT EXTENDED BEYOND THE UP-SLOPE PORTION OF THE TRENCH. ANCHOR WITH A ROW OF STAPLES APPROXIMATELY 12" APART IN THE BOTTOM OF THE TRENCH. BACKFILL AND COMPACT THE TRENCH AFTER STAPLING. APPLY SEED TO COMPACTED SOIL AND FOLD REMAINING 12" PORTION OF MAT BACK OVER SEED AND SOIL. SECURE MATS WITH A WITH A ROW OF STAPLES SPACED APPROXIMATELY 12" APART ACROSS THE WIDTH OF THE MATS.
- ROLL CENTER MATS IN DIRECTION OF WATER FLOW IN BOTTOM OF CHANNEL.
- PLACE CONSECUTIVE AND ADJACENT MATS END OVER END (SHINGLE STYLE) WITH A MINIMUM 6" OVERLAP. USE A DOUBLE ROW OF STAPLES STAGGERED 4" APART AND 4" ON CENTER TO SECURE OVERLAPPED MATS.
- FULL LENGTH EDGE OF MATS AT TOP OF SIDE SLOPES MUST BE ANCHORED WITH A ROW OF STAPLES APPROXIMATELY 12" APART IN A 6" DEEP BY 6" WIDE TRENCH.
- THE TERMINAL END OF MATS MUST BE ANCHORED WITH A ROW OF STAPLES APPROXIMATELY 12" APART IN A 6" DEEP BY 6" WIDE TRENCH.
- BACKFILL AND SEED AFTER STAPLING.
- FOLLOW MANUFACTURER'S RECOMMENDATIONS FOR PROPER INSTALLATION.

### 7 EROSION STABILIZATION MATS

C-603 NO SCALE



### 8 COIR LOG

C-603 NO SCALE

0	ISSUED FOR CONSTRUCTION	12/01/16
1	BID SET	07/29/16
No	REVISION	DATE

**VOA**  
224 SOUTH MICHIGAN AVENUE  
SUITE 1400  
CHICAGO, ILLINOIS 60604-2595  
(312) 554-1400  
ARCHITECTURE | PLANNING | INTERIOR DESIGN

**3.031**  
6 WEST 6TH STREET  
SUITE 800H  
ST. PAUL, MN 55102  
(651) 788-7461  
ARCHITECTURE | COMMISSIONING | SCANNING

**PIERCE PINI & ASSOCIATES**  
9298 CENTRAL AVE. NE,  
SUITE 312  
BLAINE, MN 55434  
TEL 763.937.1311  
FAX 763.937.1354

**SEBESTA**  
Delivering Solutions • Improving Lives  
877.706.6858 sebesta.com

**DF/**  
DAMON FARBER  
LANDSCAPE ARCHITECTS  
401 2nd Avenue North, Suite 410  
Minneapolis, MN 55401  
p 612.332.7522 f 612.332.0936  
www.damonfarber.com

I hereby certify that this plan, specification, or report was prepared by me or under my direct supervision and that I am a duly Licensed Professional Engineer under the laws of the State of Minnesota.  
*Rhonda S. Poire*  
Rhonda S. Poire  
Date: 11/05/2015 Reg. No. 41333

APPROVED: SERVICE LINE ENGINEER	DATE
APPROVED: GUTS COORDINATOR	DATE
APPROVED: PROJECTS SECTION MANAGER	DATE
APPROVED: QUALITY CONTROL	DATE

APPROVED: DIRECTION CONTROL DEVICE	DATE
APPROVED: EXISTING POWER	DATE
APPROVED: EXISTING WATER	DATE
APPROVED: EXISTING SEWER	DATE

SWPPP DETAILS	DATE
APPROVED: SWPPP DETAILS	DATE
APPROVED: SWPPP DETAILS	DATE
APPROVED: SWPPP DETAILS	DATE

ST. CLOUD VA M.C. COMMUNITY LIVING CENTER COTTAGE #2	DATE
656-342	DATE
RSP	ALA
VA MEDICAL CENTER ST. CLOUD, MN 56303	DATE

**St. Cloud VA Health Care System**  
Brainerd | Montevideo | Alexandria