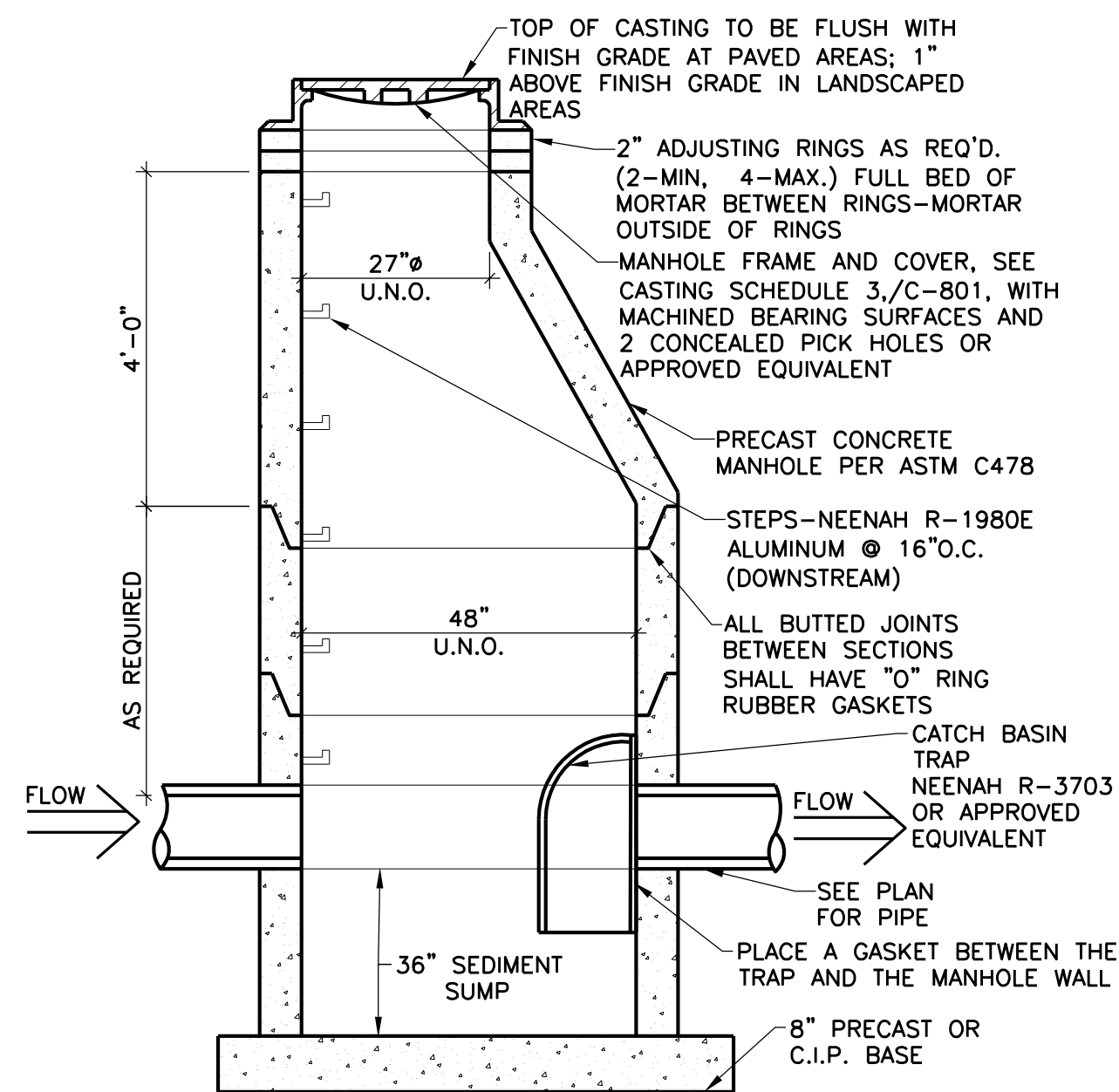


- NOTES:
- MANHOLES 8" OR DEEPER - THE PRECAST SECTION IMMEDIATELY BELOW THE CONCRETE SECTION SHALL BE 1'-0" HIGH.
 - PROVIDE STEPS IN MANHOLES OVER 4'-0" IN DEPTH.
 - REINFORCING SHALL BE A MINIMUM OF A SINGLE LINE WIRE FABRIC HAVING AN AREA OF NOT LESS THAN 0.12 SQ. IN. PER FOOT OF HEIGHT.
 - PROVIDE SNAP-IN BOOT AT ALL SANITARY SEWER CONNECTIONS TO MANHOLES.
 - ALL STORM SEWER PIPING RUNS SHALL USE RESILIENT RUBBER JOINTS AT PIPE CONNECTIONS TO CATCH BASINS FOR WATERTIGHT CONNECTION PER PLUMBING CODE.

1 STANDARD SEWER MANHOLE
C-801 NO SCALE

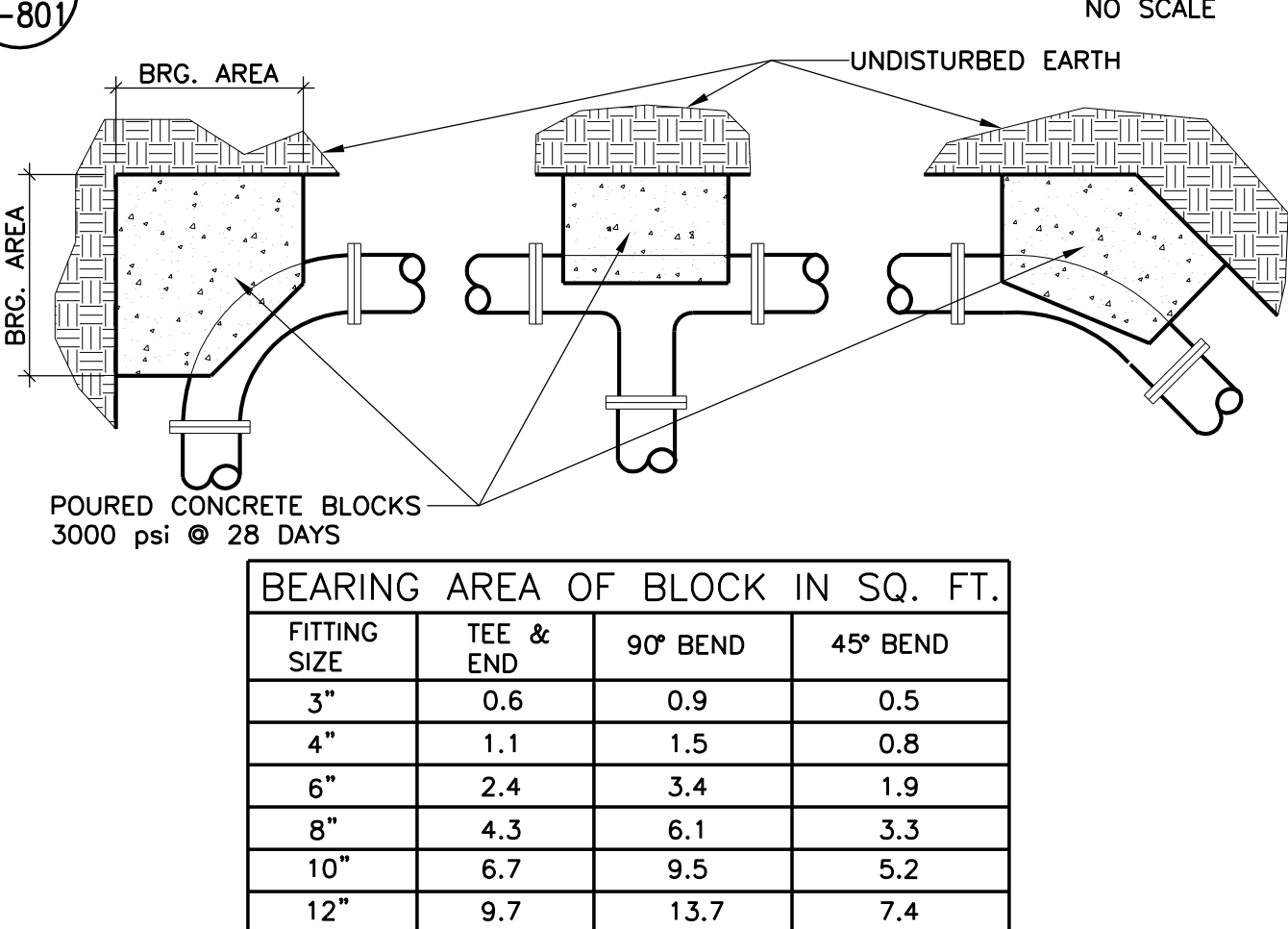


2 CATCH BASIN WITH SUMP
C-801 NO SCALE

CASTING SCHEDULE		
CATCH BASIN/MANHOLE/RISE	GRATE TYPE (NEENAH)	REMARKS
A,C,D	R-3250-1	STORM SEWER CURB INLET
B	R-2571-A	STORM SEWER AREA DRAIN
E,F,H,M,P,Q,R	R-1642	STORM SEWER MANHOLE COVER
G,J,K,L,N	DOWNSPOUT	DRAINS AT BUILDING DOWNSPOUTS, SEE DETAIL 9/C-801
1,2	R-1642	SANITARY SEWER MANHOLE COVER

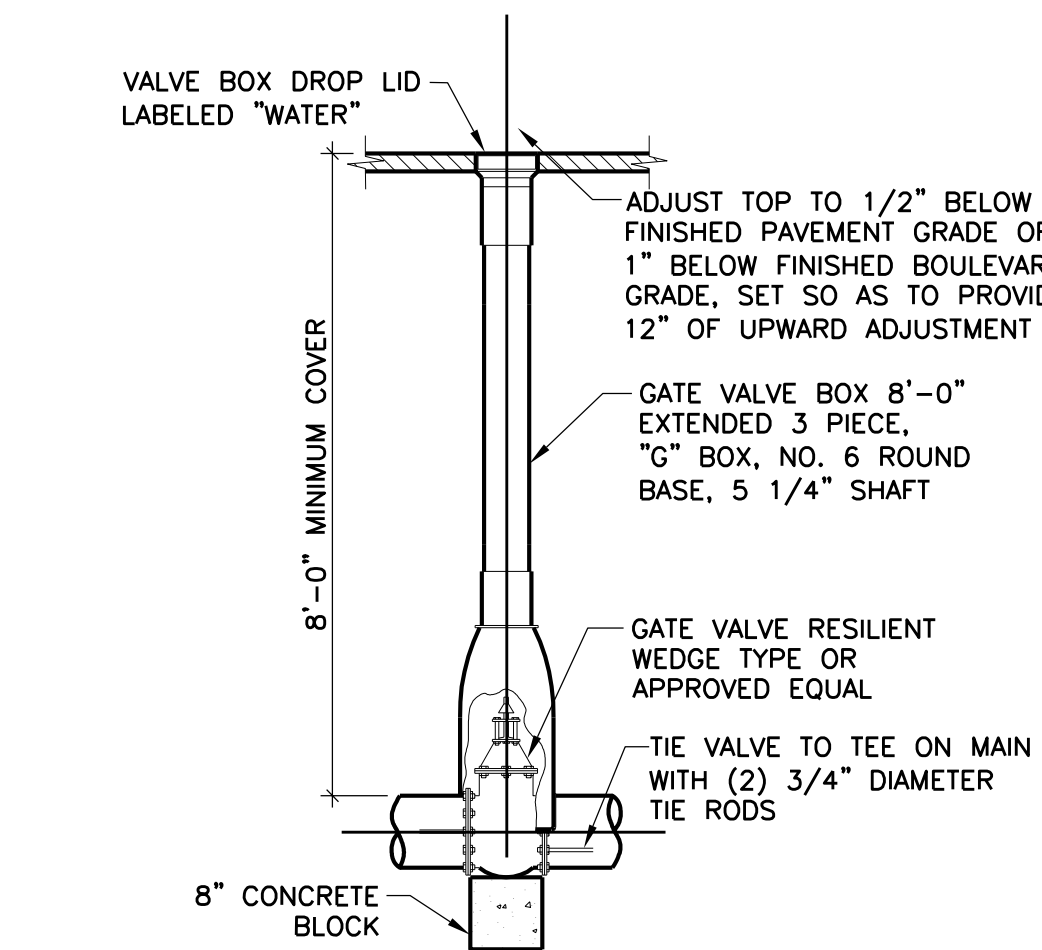
- NOTE:
- CASTINGS SHALL BE NEENAH FOUNDRY CASTINGS OR APPROVED EQUIVALENT, UNLESS NOTED OTHERWISE.
 - CASTINGS SHALL BE STAMPED WITH APPROPRIATE UTILITY NAME ("STORM SEWER", "SANITARY SEWER")

3 CASTING SCHEDULE
C-801 NO SCALE

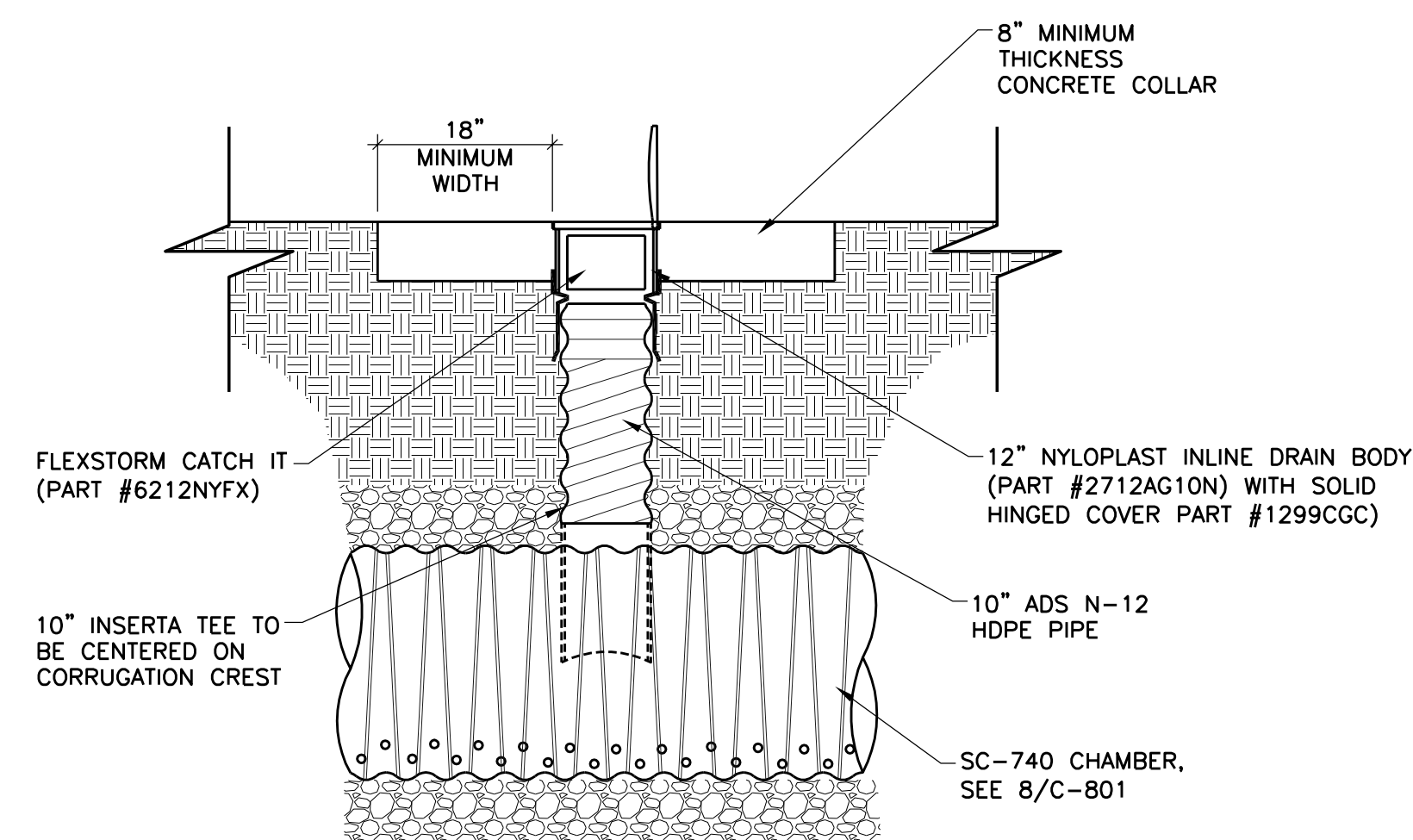


- NOTE:
- CONTRACTOR MAY PROVIDE "MEGALUG" JOINT RESTRAINT AS AN ALTERNATIVE TO CONCRETE THRUST BLOCKS. THE MINIMUM 3 JOINTS EACH SIDE OF FITTING.

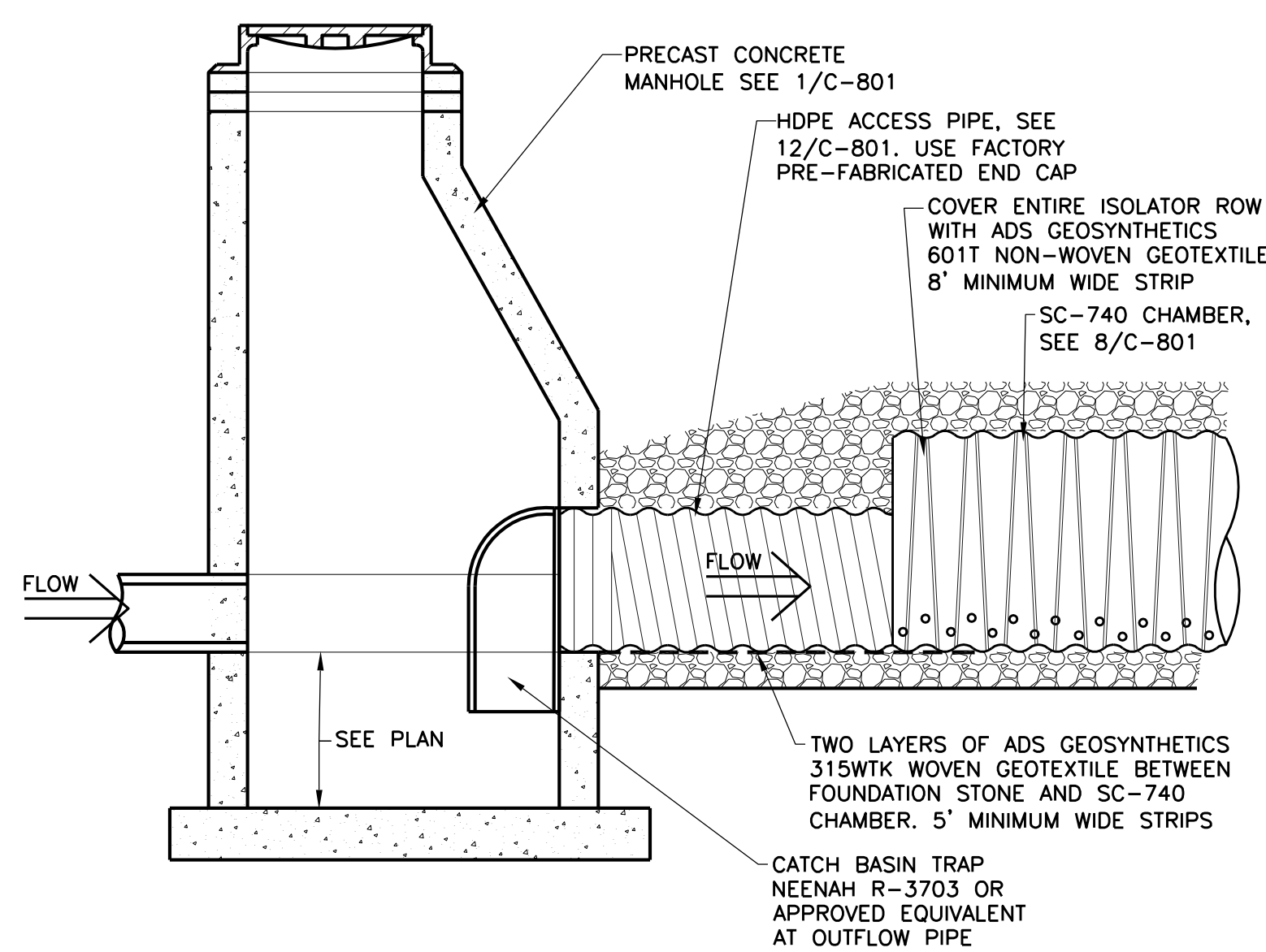
4 TYPICAL THRUST BLOCK DETAIL
C-801 NO SCALE



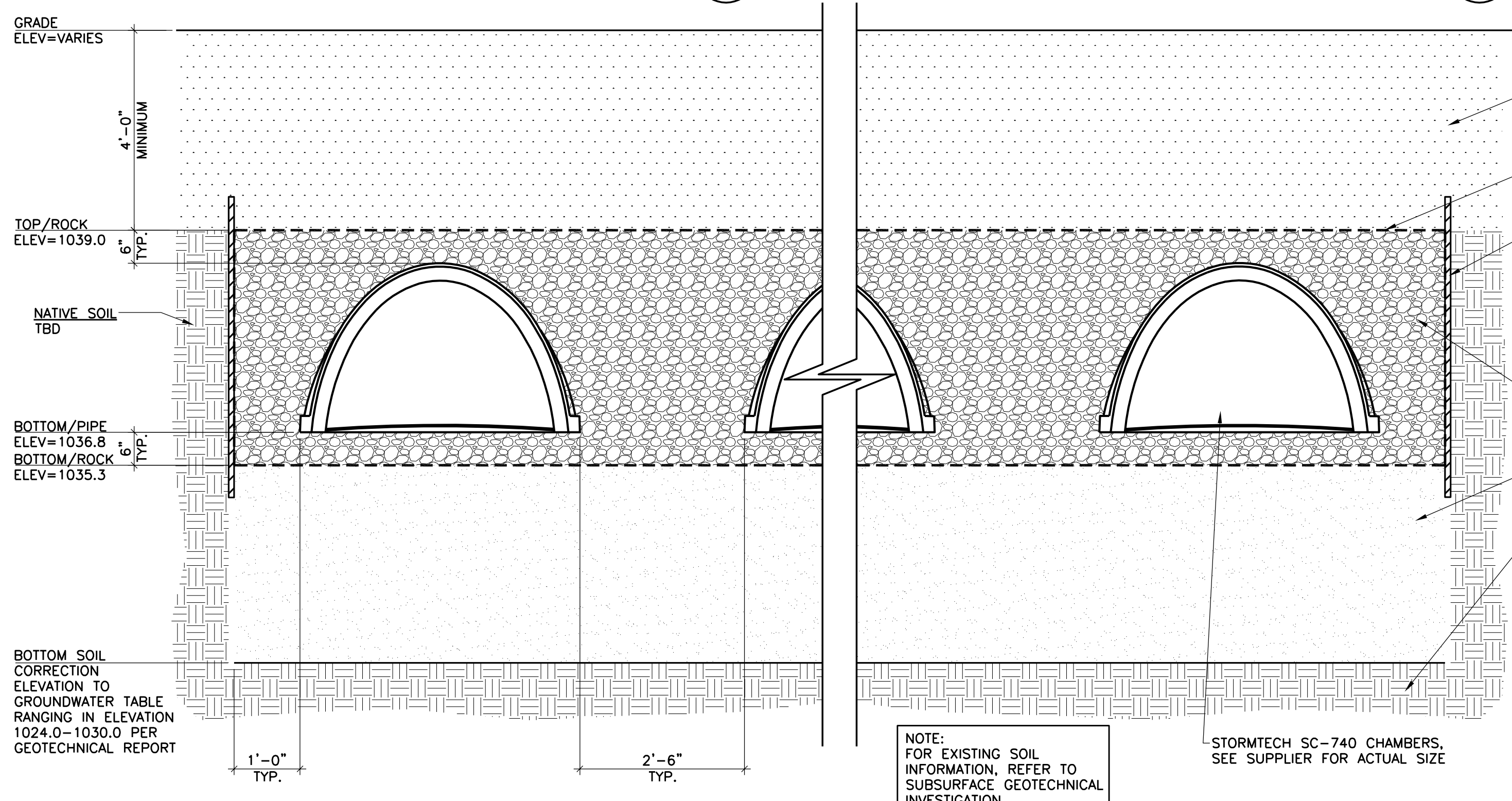
5 GATE VALVE AND BOX
C-801 NO SCALE



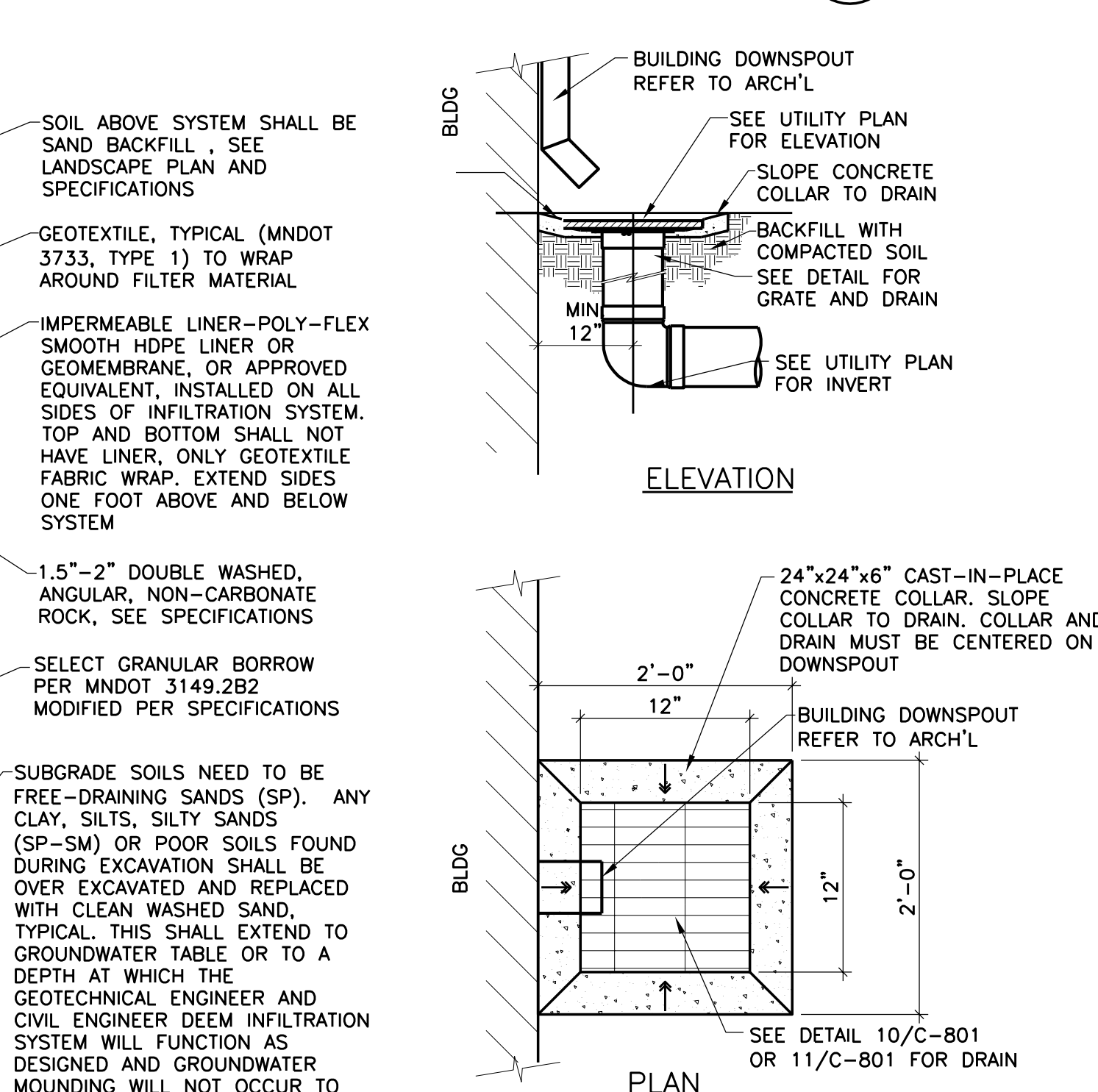
6 STORMTECH INSPECTION PORT DETAIL
C-801 NO SCALE



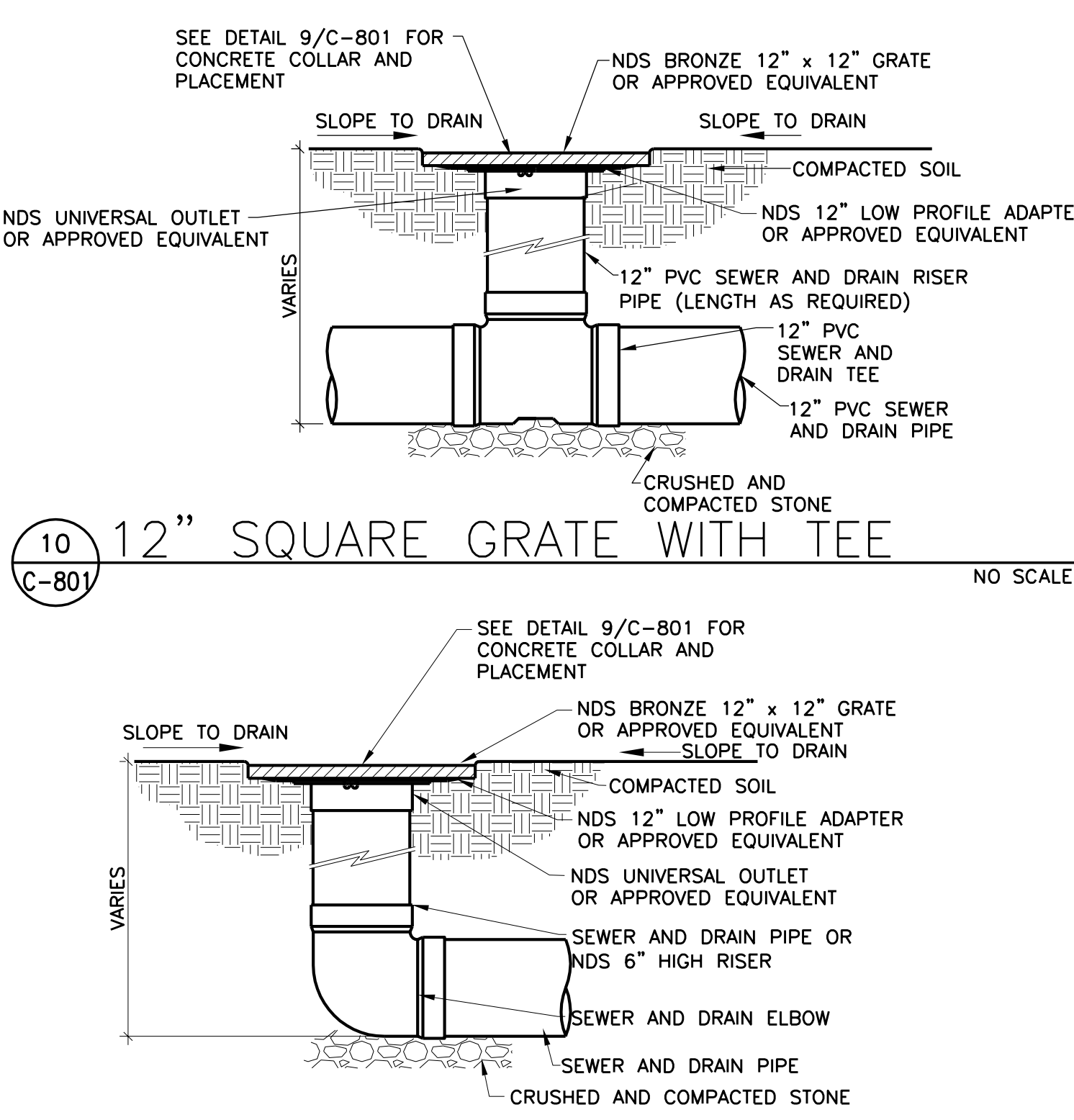
7 STORMTECH ISOLATOR ROW DETAIL
C-801 NO SCALE



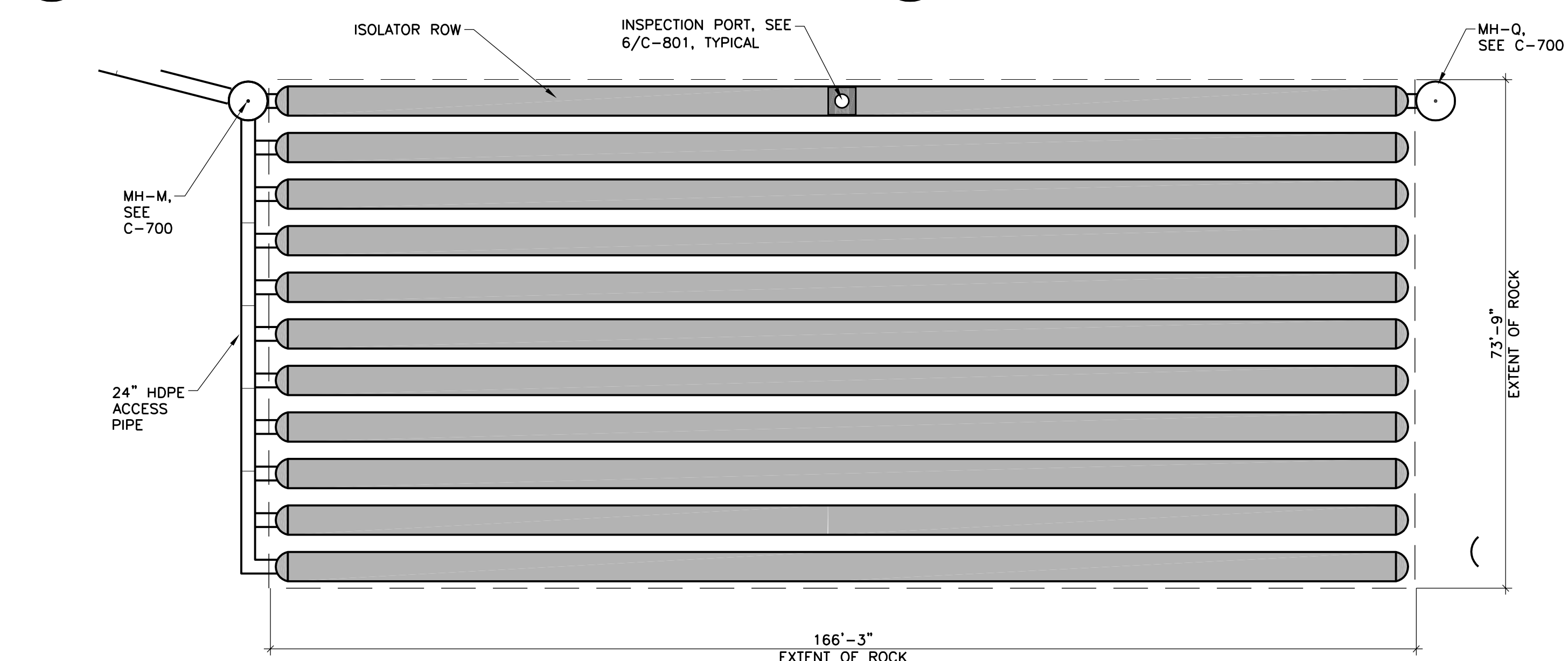
8 UNDERGROUND INFILTRATION SYSTEM - CROSS SECTION STORMTECH
C-801 NO SCALE



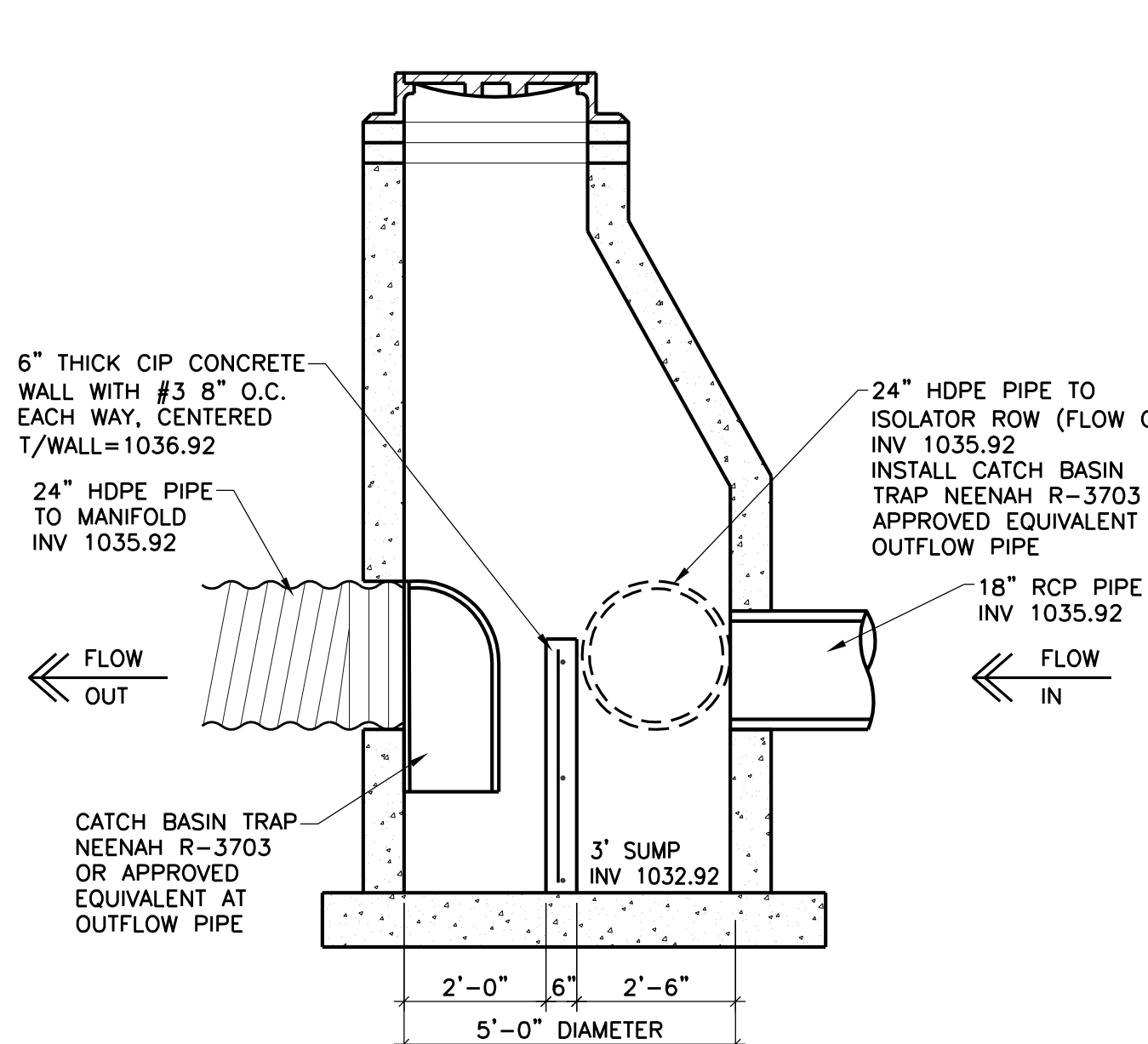
9 AREA DRAIN AT DOWNSPOUT
C-801 NO SCALE



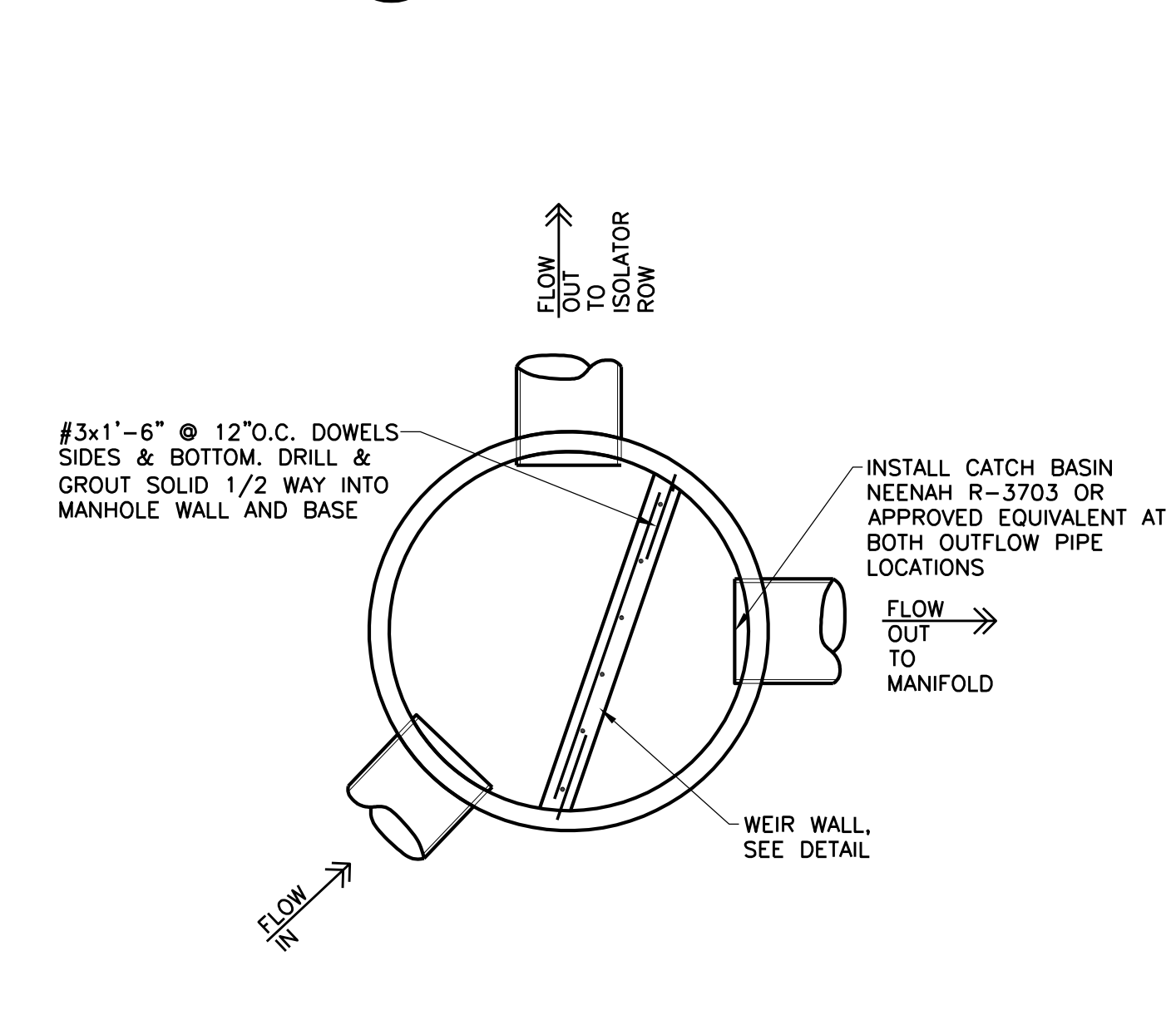
10 12" SQUARE GRATE WITH TEE
C-801 NO SCALE



11 12" SQUARE GRATE WITH ELBOW
C-801 NO SCALE



12 UNDERGROUND INFILTRATION SYSTEM - PLAN VIEW
C-801 NO SCALE



13 MANHOLE M SECTION
C-801 NO SCALE



14 MANHOLE M PLAN VIEW
C-801 NO SCALE

NO.	REVISION	DATE
0	ISSUED FOR CONSTRUCTION	12/20/16
1	BID SET	07/29/16

VOA

224 SOUTH MICHIGAN AVENUE
SUITE 1400
CHICAGO, ILLINOIS 60604-2595
(312) 554-1400

ARCHITECTURE | PLANNING | INTERIOR DESIGN

3.081

6 WEST 6TH STREET
SUITE 800H
ST. PAUL, MN 55102
(651) 788-7461

ARCHITECTURE | COMMISSIONING | SCANNING

PIERCE PINI & ASSOCIATES

9298 CENTRAL AVE. NE.
SUITE 312
BLAINE, MN 55434
TEL 763.937.1311
FAX 763.537.1354

SEBESTA

Delivering Solutions • Improving Lives

877.706.6858 sebesta.com

DF/

DAMON FARBER
LANDSCAPE ARCHITECTS

401 2nd Avenue North, Suite 410
Minneapolis, MN 55401
p 612.332.7522 f 612.332.0936
www.damonfarber.com

I hereby certify that this plan, specification, or report was prepared by me or under my direct supervision and that I am a duly Licensed Professional Engineer under the laws of the State of Minnesota.

Rhonda S. Porice

Rhonda S. Porice
Date: 11/05/2015 Reg. No. 41333

APPROVED: SERVICE LINE ENGINEER	DATE	APPROVED: INSPECTION CONTROL BOARD	DATE
APPROVED: GROUND CONSTRUCTION	DATE	APPROVED: EXISTING OWNER	DATE
APPROVED: PROJECTS SECTION MANAGER	DATE	APPROVED: DESIGN ST. PAULS	DATE
APPROVED: QUALITY CONTROL	DATE	APPROVED: SAFETY MANAGER	DATE

ST. CLOUD VA M.C. COMMUNITY LIVING CENTER COTTAGE #2	DATE	ST. CLOUD VA M.C. COMMUNITY LIVING CENTER COTTAGE #2	DATE
ST. CLOUD VA M.C. COMMUNITY LIVING CENTER COTTAGE #2	DATE	ST. CLOUD VA M.C. COMMUNITY LIVING CENTER COTTAGE #2	DATE
ST. CLOUD VA M.C. COMMUNITY LIVING CENTER COTTAGE #2	DATE	ST. CLOUD VA M.C. COMMUNITY LIVING CENTER COTTAGE #2	DATE
ST. CLOUD VA M.C. COMMUNITY LIVING CENTER COTTAGE #2	DATE	ST. CLOUD VA M.C. COMMUNITY LIVING CENTER COTTAGE #2	DATE

St. Cloud VA Health Care System

Brainerd | Montevideo | Alexandria