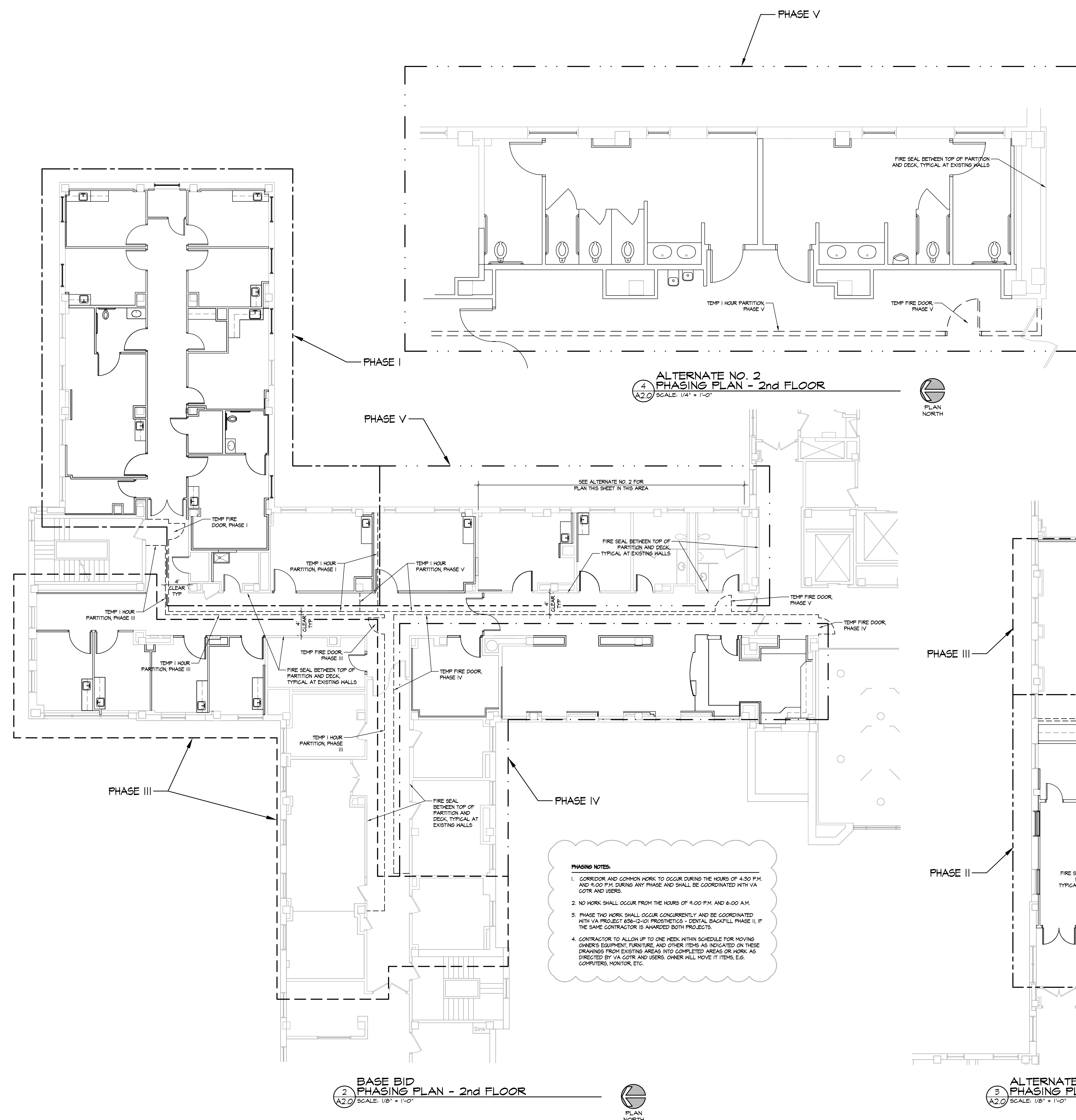


one eighth inch = one foot
one quarter inch = one foot
one half inch = one foot
three eighths inch = one foot
one inch = one foot
one and one half inches = one foot
two inches = one foot
three inches = one foot
four inches = one foot
five inches = one foot
six inches = one foot
seven inches = one foot
eight inches = one foot
nine inches = one foot
ten inches = one foot
eleven inches = one foot
twelve inches = one foot
thirteen inches = one foot
fourteen inches = one foot
fifteen inches = one foot
sixteen inches = one foot
seventeen inches = one foot
eighteen inches = one foot
nineteen inches = one foot
twenty inches = one foot
twenty one inches = one foot
twenty two inches = one foot
twenty three inches = one foot
twenty four inches = one foot
twenty five inches = one foot
twenty six inches = one foot
twenty seven inches = one foot
twenty eight inches = one foot
twenty nine inches = one foot
thirty inches = one foot
thirty one inches = one foot
thirty two inches = one foot
thirty three inches = one foot
thirty four inches = one foot
thirty five inches = one foot
thirty six inches = one foot
thirty seven inches = one foot
thirty eight inches = one foot
thirty nine inches = one foot
forty inches = one foot
forty one inches = one foot
forty two inches = one foot
forty three inches = one foot
forty four inches = one foot
forty five inches = one foot
forty six inches = one foot
forty seven inches = one foot
forty eight inches = one foot
forty nine inches = one foot
fifty inches = one foot
fifty one inches = one foot
fifty two inches = one foot
fifty three inches = one foot
fifty four inches = one foot
fifty five inches = one foot
fifty six inches = one foot
fifty seven inches = one foot
fifty eight inches = one foot
fifty nine inches = one foot
sixty inches = one foot
sixty one inches = one foot
sixty two inches = one foot
sixty three inches = one foot
sixty four inches = one foot
sixty five inches = one foot
sixty six inches = one foot
sixty seven inches = one foot
sixty eight inches = one foot
sixty nine inches = one foot
seventy inches = one foot
seventy one inches = one foot
seventy two inches = one foot
seventy three inches = one foot
seventy four inches = one foot
seventy five inches = one foot
seventy six inches = one foot
seventy seven inches = one foot
seventy eight inches = one foot
seventy nine inches = one foot
eighty inches = one foot
eighty one inches = one foot
eighty two inches = one foot
eighty three inches = one foot
eighty four inches = one foot
eighty five inches = one foot
eighty six inches = one foot
eighty seven inches = one foot
eighty eight inches = one foot
eighty nine inches = one foot
ninety inches = one foot
ninety one inches = one foot
ninety two inches = one foot
ninety three inches = one foot
ninety four inches = one foot
ninety five inches = one foot
ninety six inches = one foot
ninety seven inches = one foot
ninety eight inches = one foot
ninety nine inches = one foot
one hundred inches = one foot

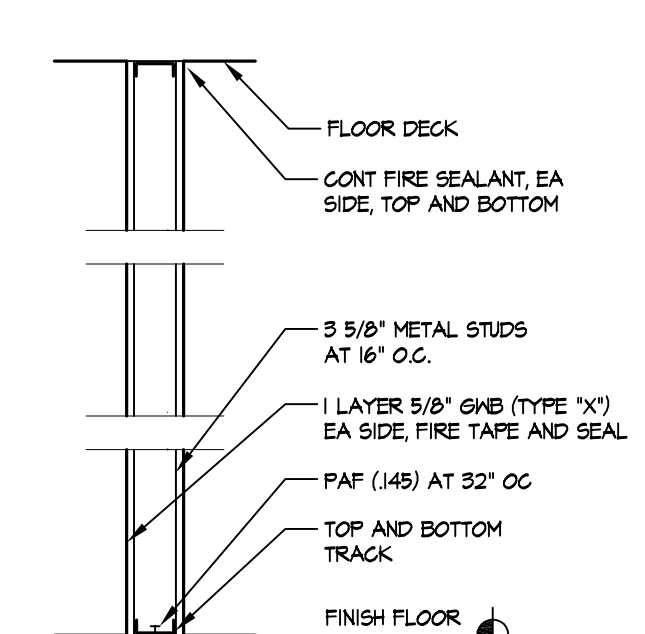


ALTERNATE NO. 2
PHASING PLAN - 2nd FLOOR
SCALE: 1/4" = 1'-0"

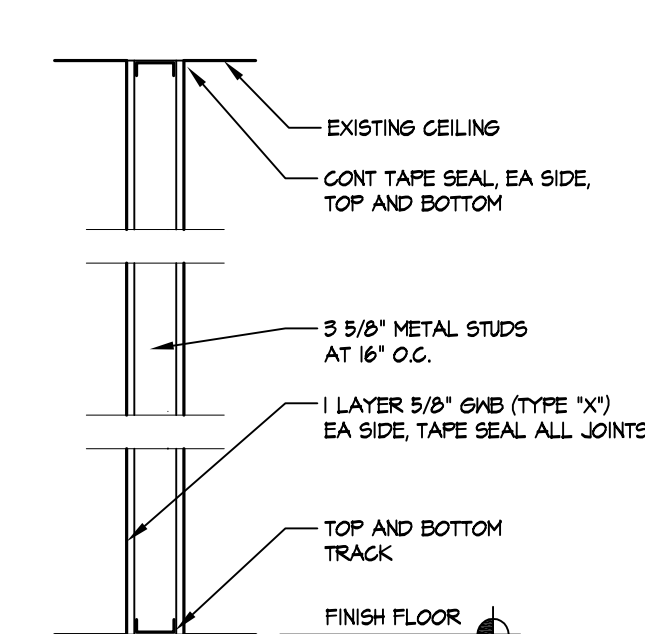


- PHASING NOTES:**
1. CORRIDOR AND COMMON WORK TO OCCUR DURING THE HOURS OF 4:30 P.M. AND 9:00 P.M. DURING ANY PHASE AND SHALL BE COORDINATED WITH VA CONTRACTORS AND USERS.
 2. NO WORK SHALL OCCUR FROM THE HOURS OF 9:00 P.M. AND 6:00 A.M.
 3. PHASE TWO WORK SHALL OCCUR CONCURRENTLY AND BE COORDINATED WITH VA PROJECT 656-2-101 PROSTHETICS - DENTAL BACKFILL PHASE II, IF THE SAME CONTRACTOR IS AWARDED BOTH PROJECTS.
 4. CONTRACTOR TO ALLOW UP TO ONE WEEK WITHIN SCHEDULE FOR MOVING OWNER'S EQUIPMENT, FURNITURE, AND OTHER ITEMS AS INDICATED ON THESE DRAWINGS FROM EXISTING AREAS INTO COMPLETED AREAS OR WORK AS DIRECTED BY VA CONTRACTORS AND USERS. OWNER WILL MOVE IT ITEMS, E.G. COMPUTERS, MONITOR, ETC.

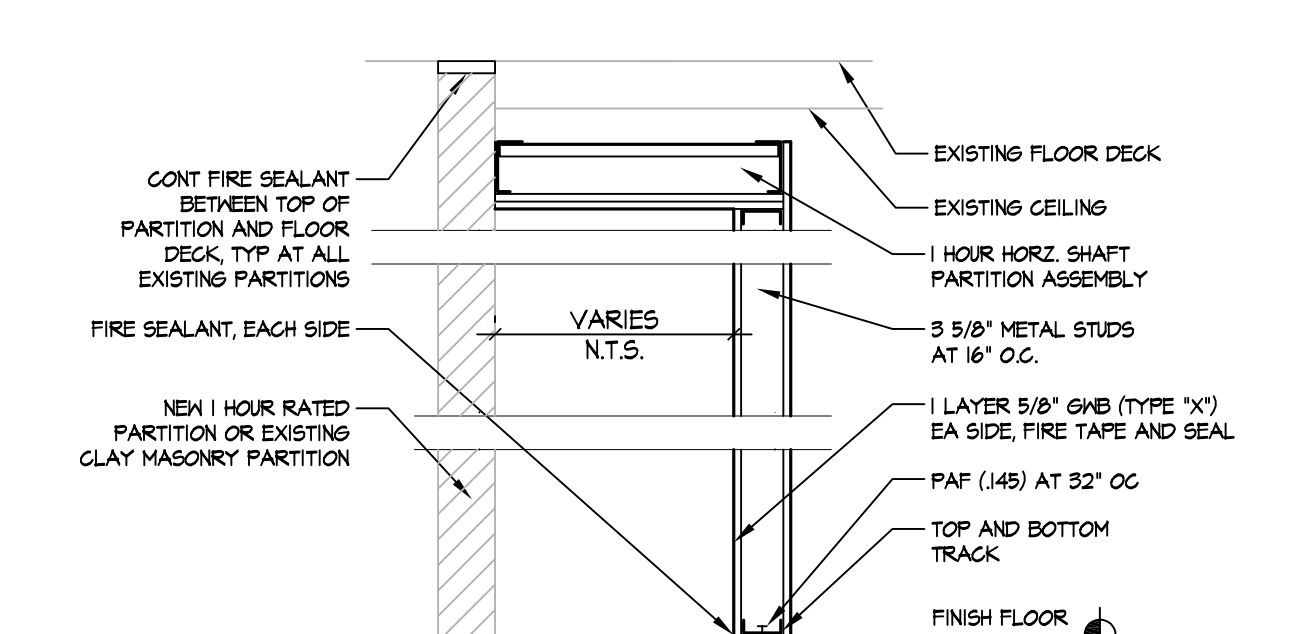
BASE BID
PHASING PLAN - 2nd FLOOR
SCALE: 1/8" = 1'-0"



TEMP 1 HOUR FIRE RATED
PARTITION, TYPE I



TEMP PARTITION, TYPE III

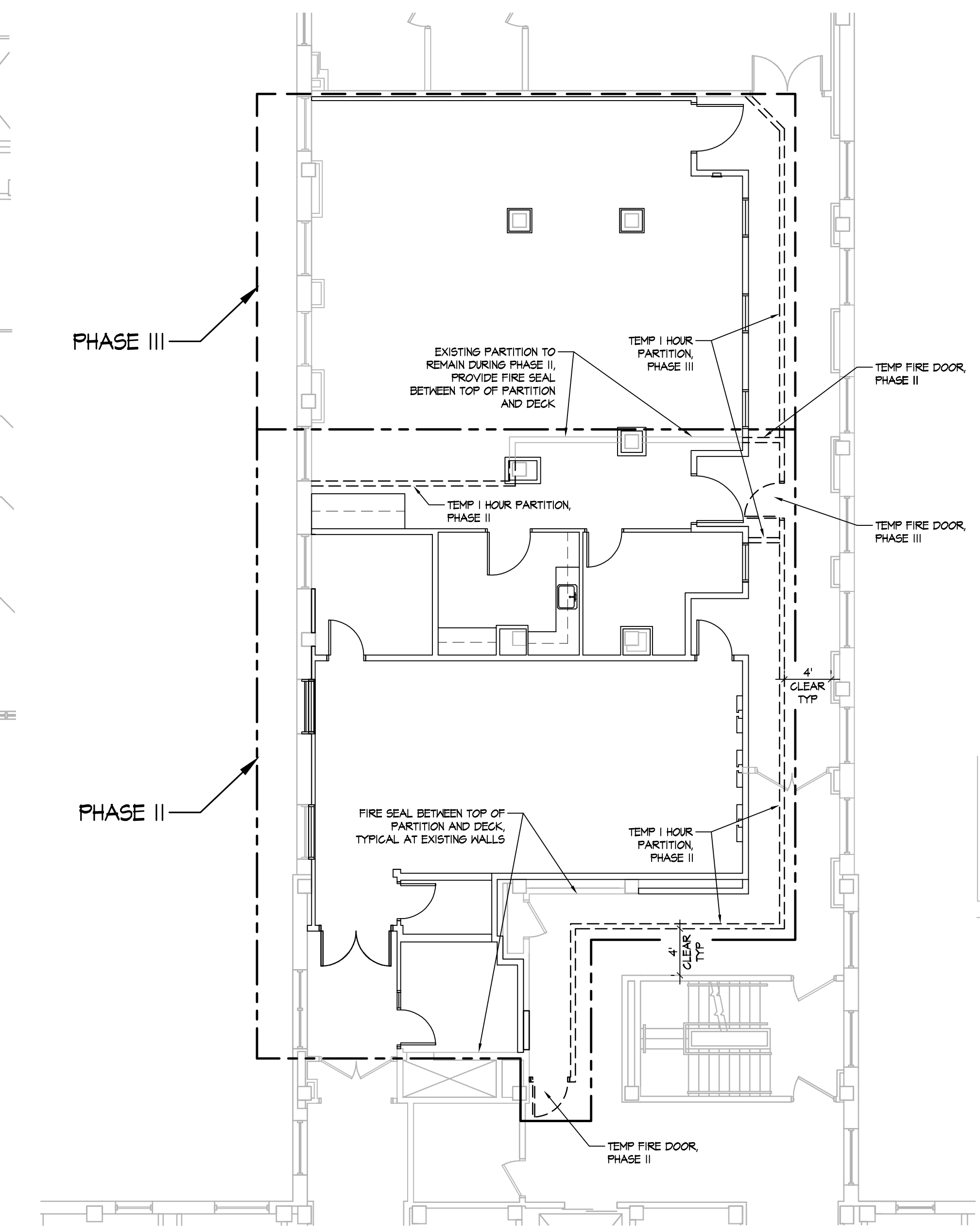


TEMP 1 HOUR FIRE RATED
PARTITION, TYPE II

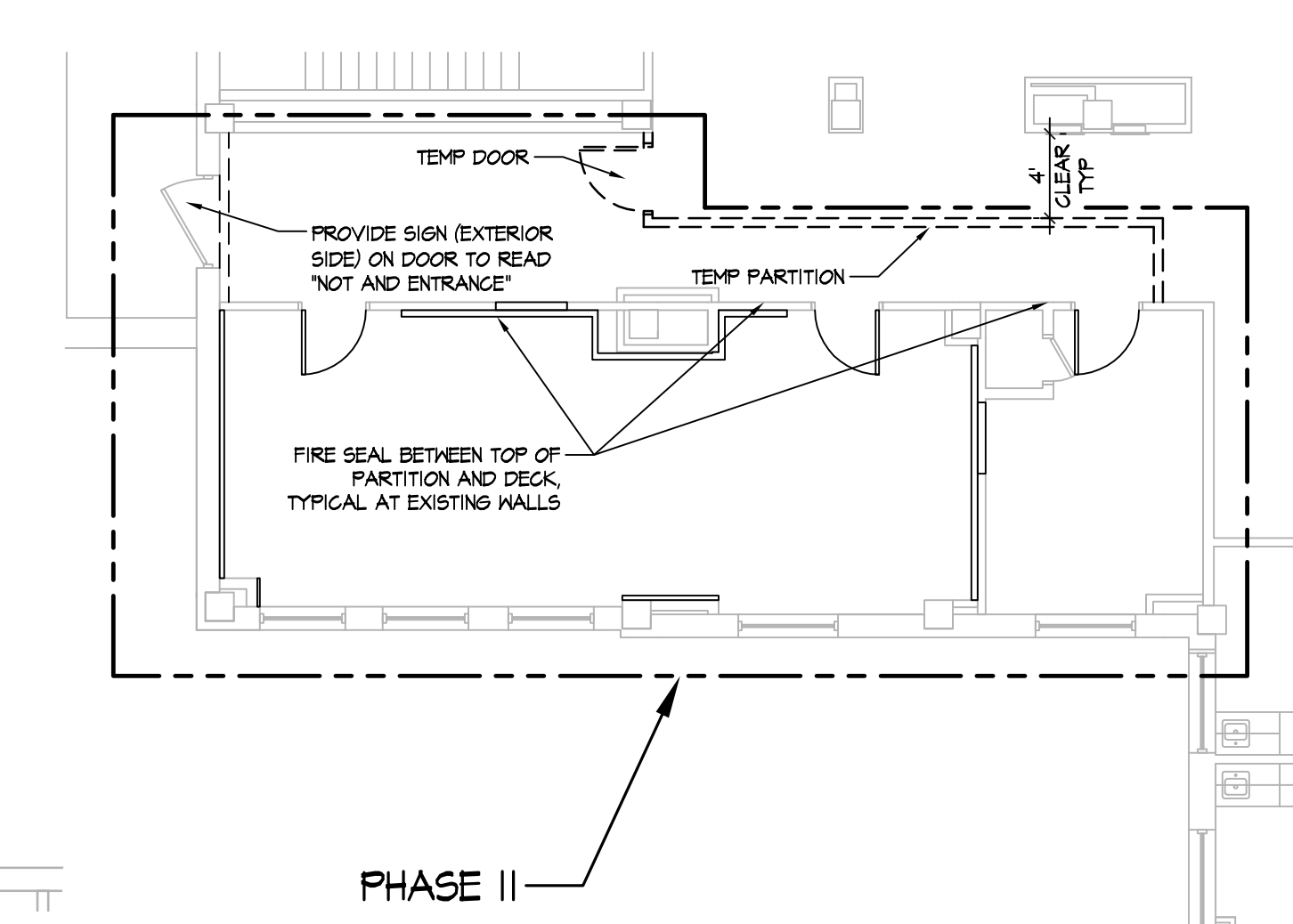
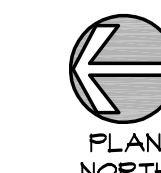
PARTITION TYPE NOTES:

1. PROVIDE 20 MIN FIRE RATED DOOR AT ALL TEMPORARY (TEMP) 1 HOUR RATED PARTITIONS WITH RATED HARDWARE AND FRAME.
2. ALL TEMPORARY (TEMP) PARTITIONS TO RECEIVE LEVEL 1 FINISH.

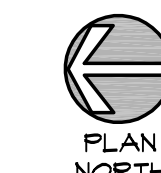
TEMPORARY PARTITION TYPES
NTS



ALTERNATE NO. 1
PHASING PLAN - 2nd FLOOR
SCALE: 1/8" = 1'-0"



BASE BID
PHASING PLAN - 1st FLOOR
SCALE: 1/8" = 1'-0"



OWNER CHANGES Revisions 6-13-2012 Date		IMPORTANT CONTRACTOR'S NOTE 1. ALL CONTRACTORS ARE RESPONSIBLE FOR REVIEWING ENTIRE SET OF DOCUMENTS TO DETERMINE THEIR FULL SCOPE OF WORK. CONTRACTOR SHALL NOT BE ALLOWED EXTRA COSTS DUE TO FAILURE TO REVIEW ENTIRE SET OF DOCUMENTS. 2. ANY USE OF THESE ELECTRONIC DRAWINGS OR SCALING OF THE PRINTED DOCUMENTS ARE DONE SO AT THE CONTRACTOR'S RISK.		ARCHITECT/ENGINEERS: CLH Calvin L. Hinz Architects, P.C. 3705 North 200th Street Elkhorn, Nebraska 68022 Phone: 402.291.6941 Fax: 402.291.9193 KRS ENGINEERING 11620 ARBOR STREET SUITE 100 OMAHA, NEBRASKA 68144 PHONE: 402.932.0100 FAX: 402.932.1001 www.krsengineering.com KRS # 1793 COPYRIGHT 2011 This document and the information contained may not be reproduced without the express written permission of KRS Engineering, LLC. Unauthorized copying, disclosure or construction use are prohibited by the copyright law.		Drawing Title PHASING PLANS SHEET ISSUED APRIL 21, 2012 Approved Project Director KEVIN HUTSELL CONSTRUCTION DOCUMENT (CD-3) SUBMITTAL (100%) April 13, 2012		Project Title RENOVATE BACKFILL CANTEN SPACE NWIHCs Location VAMC Grand Island, NE Date APRIL 13, 2012 Checked CH Drawn		Project Number 636-12-103 Building Number ONE Drawing Number A2.0 Dwg. 41 of 41		Office of Construction and Facilities Management Department of Veterans Affairs	
--	--	--	--	---	--	---	--	---	--	--	--	---	--