

GENERAL STRUCTURAL NOTES:

GENERAL PROJECT NOTES:
1. ALL DIMENSIONS AND CONDITIONS SHOWN ON THE DRAWINGS SHALL BE VERIFIED BY THE CONTRACTOR PRIOR TO FABRICATION OR CONSTRUCTION.
2. THE ARCHITECT SHALL BE NOTIFIED IN WRITING OF ANY EXISTING CONDITIONS WHICH DIFFER FROM THOSE SHOWN ON THE CONTRACT DOCUMENTS.
3. THE CONTRACTOR SHALL BE RESPONSIBLE FOR THE PROTECTION OF THE EXISTING BUILDING DURING THE EXECUTION OF THE CONTRACT.

CONCRETE NOTES:
1. PATCHING MATERIAL FOR CONCRETE FLOORS SHALL BE EITHER DURACRETE BY LHM CONSTRUCTION CHEMICALS, INC. OR EXAGOC R30 C1 BY BAY CONSTRUCTION CHEMICALS, LLC. EITHER MATERIAL MAY BE EXTENDED WITH FEA GRAVEL IN ACCORDANCE WITH THE MANUFACTURER'S RECOMMENDATIONS. ALL MANUFACTURER'S RECOMMENDATIONS SHALL BE FOLLOWED.

STRUCTURAL STEEL:
1. STRUCTURAL STEEL SHALL BE DESIGNED, FABRICATED AND ERECTED IN ACCORDANCE WITH THE AISC SPECIFICATIONS FOR THE DESIGN, FABRICATION AND ERECTION OF STRUCTURAL STEEL BUILDINGS AND THE CODE OF STANDARD PRACTICE, LATEST EDITIONS.
2. ANGLES SHALL BE ASTM A36.
3. STEEL SHALL BE THOROUGHLY CLEANED OF MILL SCALE PRIOR TO APPLICATION OF THE PRIMER IN ACCORDANCE WITH SSPC SP-2 OR SP-3.
4. SHOP PAINT STRUCTURAL STEEL WITH ONE COAT, 2 MILS OF FABRICATOR'S STANDARD PRIMER. DO NOT PAINT THE CONTACT SURFACES OF STEEL IN CONTACT WITH CONCRETE.
5. THE CONTRACTOR SHALL SUBMIT STRUCTURAL STEEL SHOP DRAWINGS TO THE ARCHITECT.

STEEL DECK:
1. STEEL DECK SHALL CONFORM TO THE STEEL DECK SPECIFICATIONS AND LOAD TABLES OF THE STEEL DECK INSTITUTE (SDI).
2. THE STEEL ROOF DECK SHALL BE 4"X16" DEEP, 24 GAUGE, TYPE C.
3. METAL DECK SHALL BE GALVANIZED.
4. THE CONTRACTOR SHALL SUBMIT STEEL DECK SHOP DRAWINGS TO THE ARCHITECT.

LEGEND:

EXISTING CONSTRUCTION TO REMAIN
EXISTING CONSTRUCTION TO BE REMOVED

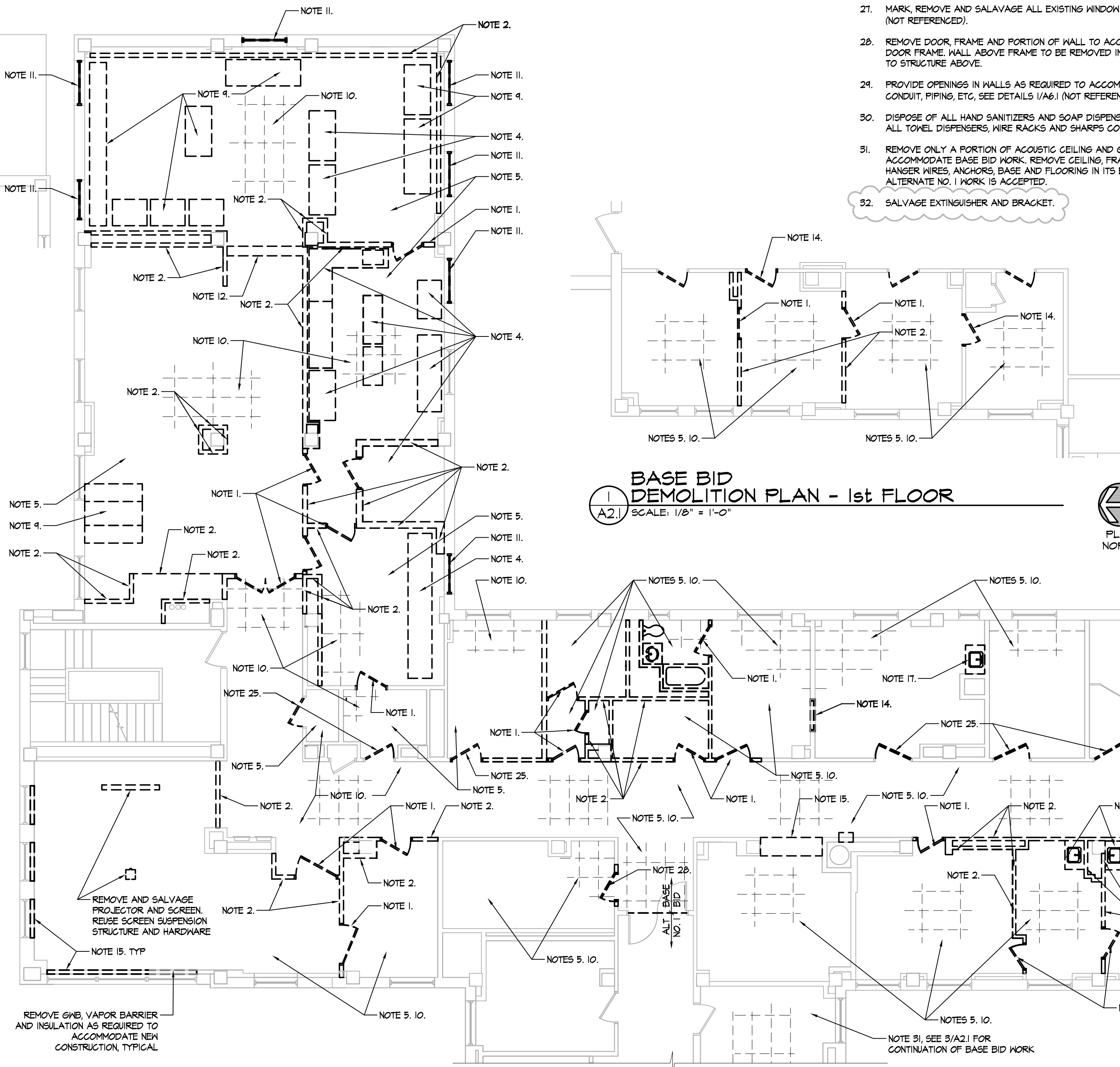
INFECTION CONTROL NOTES:

- INFECTION CONTROL WORK TO TAKE PLACE PRIOR TO DEMOLITION.
- MODIFY EXISTING CEILING AS REQUIRED FLUSH WITH CONSTRUCTION WALL.
 - PROVIDE NEGATIVE AIR MACHINE WITH HEPA FILTER IN ALL DEMOLITION AREAS.
 - PROVIDE TEMPORARY TEMPORARY 1 HOUR RATED CONSTRUCTION WALL AS INDICATED ON PHASING PLANS. EXTEND TO FLOOR STRUCTURE ABOVE. SEAL AROUND ALL PIPES, CONDUIT AND DUCTS AND OTHER OBSTACLES WITH APPROVED FIRESTOPPING. PROVIDE LOCKABLE DOOR AND KEYS TO DESIGNATED VA PERSONNEL. SEE GENERAL REQUIREMENTS FOR ADDITIONAL REQUIREMENTS.
 - PROVIDE STICKY MATS AT ALL ENTRANCES TO CONSTRUCTION AREAS. ALL MATS TO BE MAINTAINED BY CONTRACTOR.
 - CONTRACTOR IS RESPONSIBLE FOR THE CONTROL OF DUST DURING THE ENTIRE CONSTRUCTION SCHEDULE. SEE SPECIFICATIONS FOR ADDITIONAL DUST CONTROL MEASURES.

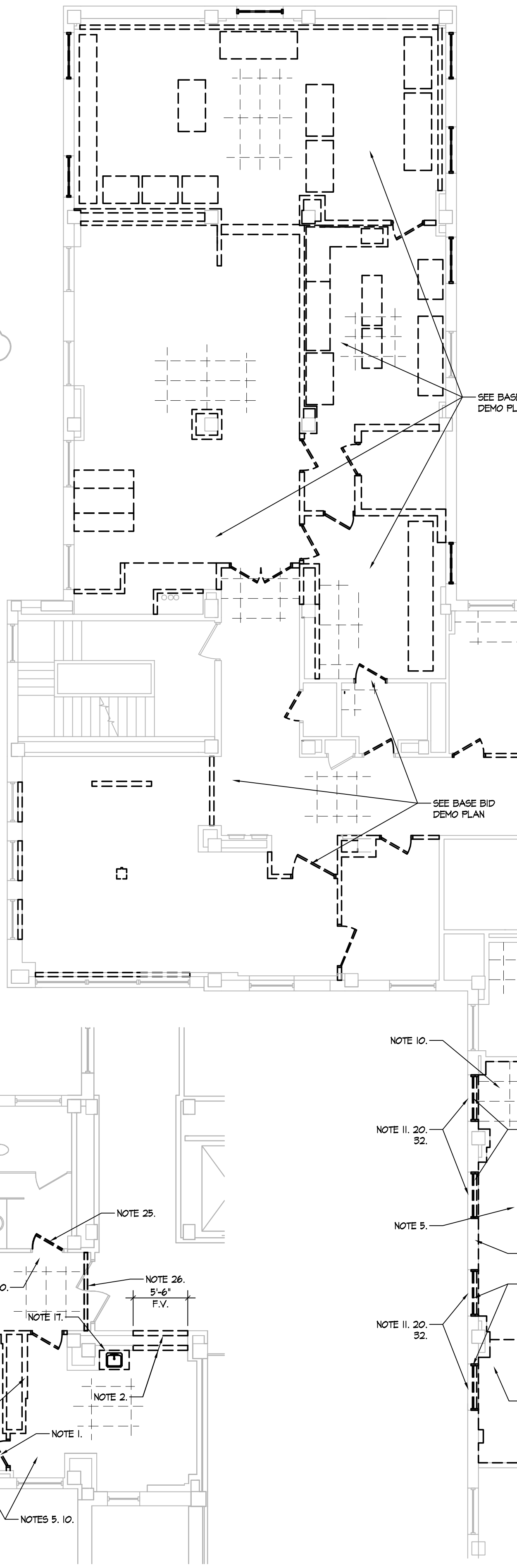
NOTES:

- DRAWINGS BASED ON LIMITED FIELD VERIFICATION. NOT ALL REMOVALS ARE NOTED. REMOVE EXISTING WORK WHERE REQUIRED TO COMPLY WITH DESIGN INTENT.
- REMOVE DOOR, FRAME AND ASSOCIATED HARDWARE.
 - REMOVE WALL BRACING AND ANCHORS TO STRUCTURE ABOVE. SAN CUT CLAY TILE WALLS.
 - REMOVE PORTION OF CEILING AS REQUIRED TO ACCOMMODATE WORK. REMOVE AND REINSTALL LIGHT FIXTURES, SPEAKERS, ETC AS REQUIRED.
 - REMOVE KITCHEN EQUIPMENT, QUANTITY AND TYPE UNKNOWN. FIELD VERIFY.
 - REMOVE ALL FLOORING AND BASE. EXISTING TERRAZZO FLOORING TO REMAIN WHERE OCCURRING. SEE 5/A/1 FOR REMOVAL OF TERRAZZO BASE.
 - REMOVE WALL COVERINGS AND FINISHES (INCLUDING TILE) ON ALL WALLS THAT REMAIN (NOT REFERENCED).
 - INFILL ALL EXISTING FLOOR PENETRATIONS, QUANTITY UNKNOWN (NOT REFERENCED). FOR PENETRATIONS UP TO 1/2" DIA. USE STIFF GROUT MIX SUITED FOR APPLICATIONS. FOR OPENINGS LARGER THAN 1/2" DIA. SEE 5/A/1.
 - REMOVE ALL SIGNAGE AND SALVAGE FOR REUSE (NOT REFERENCED).
 - REMOVE ALL SHELVING, MERCHANDISING FIXTURES, BOOTHS, ETC. QUANTITY AND TYPE UNKNOWN. FIELD VERIFY.
 - REMOVE CEILING, FRAMING, GRID, HANGER WIRES AND ANCHORS.
 - REMOVE GLAZING AND PORTION OF FRAME. SEE WINDOW DETAILS FOR EXTENT. SEE FLOOR PLANS FOR ADDITIONAL GLAZING REMOVALS.
 - REMOVE ROLLING GRILL.
 - REMOVE ALL HANDRAIL AND WALL PROTECTION TO NEAREST TERMINATION IN AREAS OF WORK. SALVAGE HANDRAIL FOR REUSE (NOT REFERENCED).
 - REMOVE DOOR AND FRAME. REMOVE FRAME WITHOUT DAMAGING EXISTING WALL.
 - REMOVE SOFFIT, FRAMING AND ANCHORS.
 - SAN CUT AND REMOVE PORTION OF WALL.
 - REMOVE CASEWORK.
 - REMOVE WOOD WAINSCOTING AND TRIM.
 - REMOVE STAGE AND FRAMING.
 - REMOVE STAINED GLASS WINDOWS AND SALVAGE FOR REUSE.
 - REMOVE DOORS AND CASING AND SALVAGE FOR REUSE.
 - REMOVE DUMP WATER HOUSING AND ENCLOSURE. CUT AND REMOVE TRACKS BELOW 2ND FLOOR DECK. ANCHOR TRACKS AT REMAIN AS REQUIRED. IF EXISTING STRUCTURAL OPENING VARIES FROM WHAT IS INDICATED ON DETAIL, CONTACT ARCHITECT BEFORE PROCEEDING WITH WORK.
 - REMOVE COUNTERTOP AND SUPPORTS.
 - REMOVE TOILET COMPARTMENT.
 - REMOVE DOOR AND HARDWARE, FRAME TO REMAIN. SALVAGE OPERATORS AND ASSOCIATED HARDWARE AT DOORS 230 AND 251.
 - REMOVE EXPANSION JOINT COVER AT FLOOR AND WALLS.
 - MARK, REMOVE AND SALVAGE ALL EXISTING WINDOW SHADES (NOT REFERENCED).
 - REMOVE DOOR, FRAME AND PORTION OF WALL TO ACCOMMODATE NEW DOOR FRAME. WALL ABOVE FRAME TO BE REMOVED IN ITS ENTIRETY TO STRUCTURE ABOVE.
 - PROVIDE OPENINGS IN WALLS AS REQUIRED TO ACCOMMODATE DUCTS, CONDUIT, PIPING, ETC. SEE DETAILS 1/A/1 (NOT REFERENCED).
 - DISPOSE OF ALL HAND SANITIZERS AND SOAP DISPENSERS. SALVAGE ALL TOWEL DISPENSERS, WIRE RACKS AND SHARP CONTAINERS.
 - REMOVE ONLY A PORTION OF ACUSTIC CEILING AND GRID TO ACCOMMODATE BASE BID WORK. REMOVE CEILING, FRAMING, GRID, HANGER WIRES, ANCHORS, BASE AND FLOORING IN ITS ENTIRETY IF ALTERNATE NO. 1 WORK IS ACCEPTED.
 - SALVAGE EXTINGUISHER AND BRACKET.

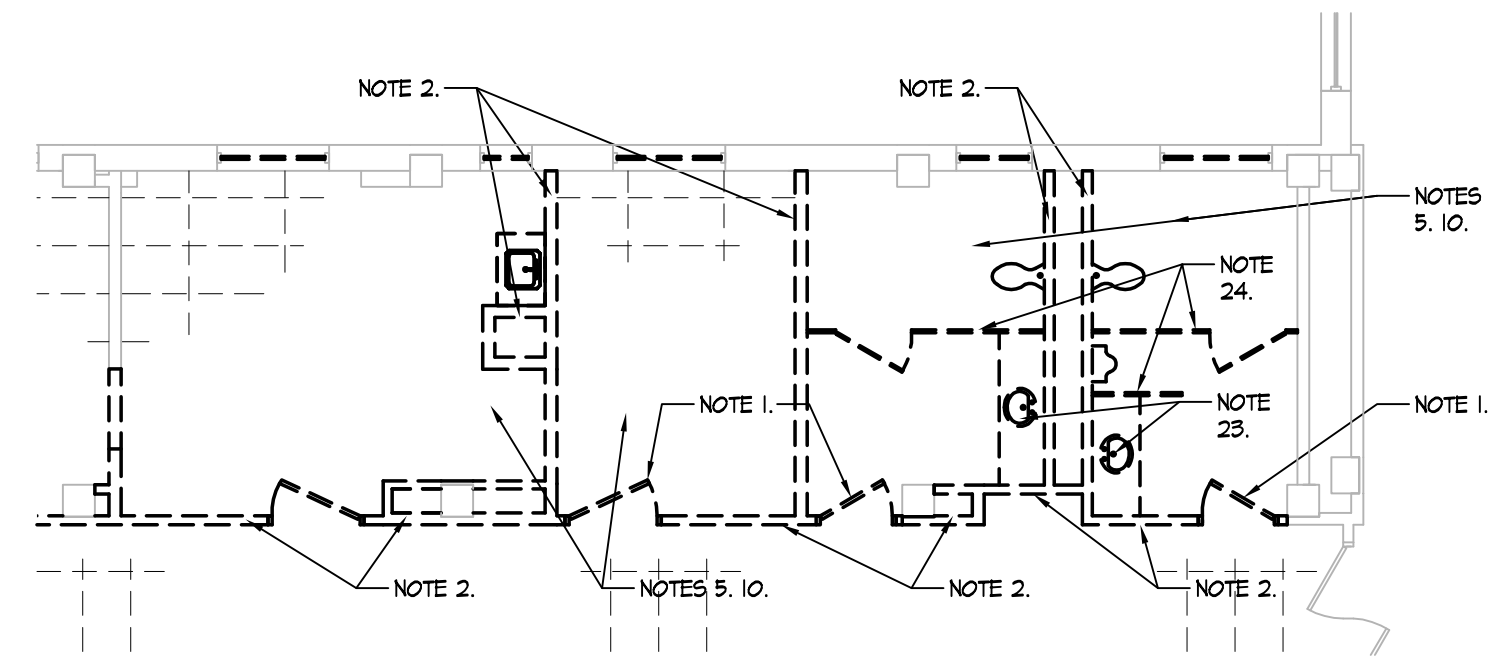
- PROVIDE OPENING OF 36" WIDE AND 84" HIGH. SAN CUT AND REMOVE PORTION OF WALL FROM FLOOR TO STRUCTURE ABOVE. PROVIDE METAL STUD HEAD TO CLOSE OFF CEILING SUPPORT EXISTING WALLS PER 5/A/1. PROVIDE ADDITIONAL METAL STUD TRACK AT JAMBS. NEST ON METAL STUD FRAMING. REMOVE ALL SHARP EDGES AND CORNERS. FILL FLOOR LEVEL WITH ADJACENT FLOORING.
- PROVIDE NEW CLEAR OPENING OF 36" WIDE AND 84" HIGH BOTTOM OF FRAME. REMOVE GLAZING AT NEW OPENING. SAN CUT WINDOW FRAME AND WALL AND REMOVE. PROVIDE METAL STUD HEAD TO CLOSE OFF CEILING SUPPORT EXISTING WALLS PER 5/A/1. PROVIDE ADDITIONAL METAL STUD TRACK AT JAMBS. NEST ON METAL STUD FRAMING. REMOVE ALL SHARP EDGES AND CORNERS. FILL FLOOR LEVEL WITH ADJACENT FLOORING. DO NOT SAN CUT EXISTING WINDOW JAMB OR HEAD TO REMAIN.
- DO NOT REMOVE ANY PORTION OF DOOR WALL. PROVIDE CONTINUOUS METAL TRACK AT DOOR WALL ABOVE CEILING. BRACE WITH METAL STUDS AT 16" O.C. TO STRUCTURE ABOVE. TYPICAL EACH SIDE OF DOOR.
- SEE FINISH PLAN FOR FLOORING REMOVAL EXTENT.



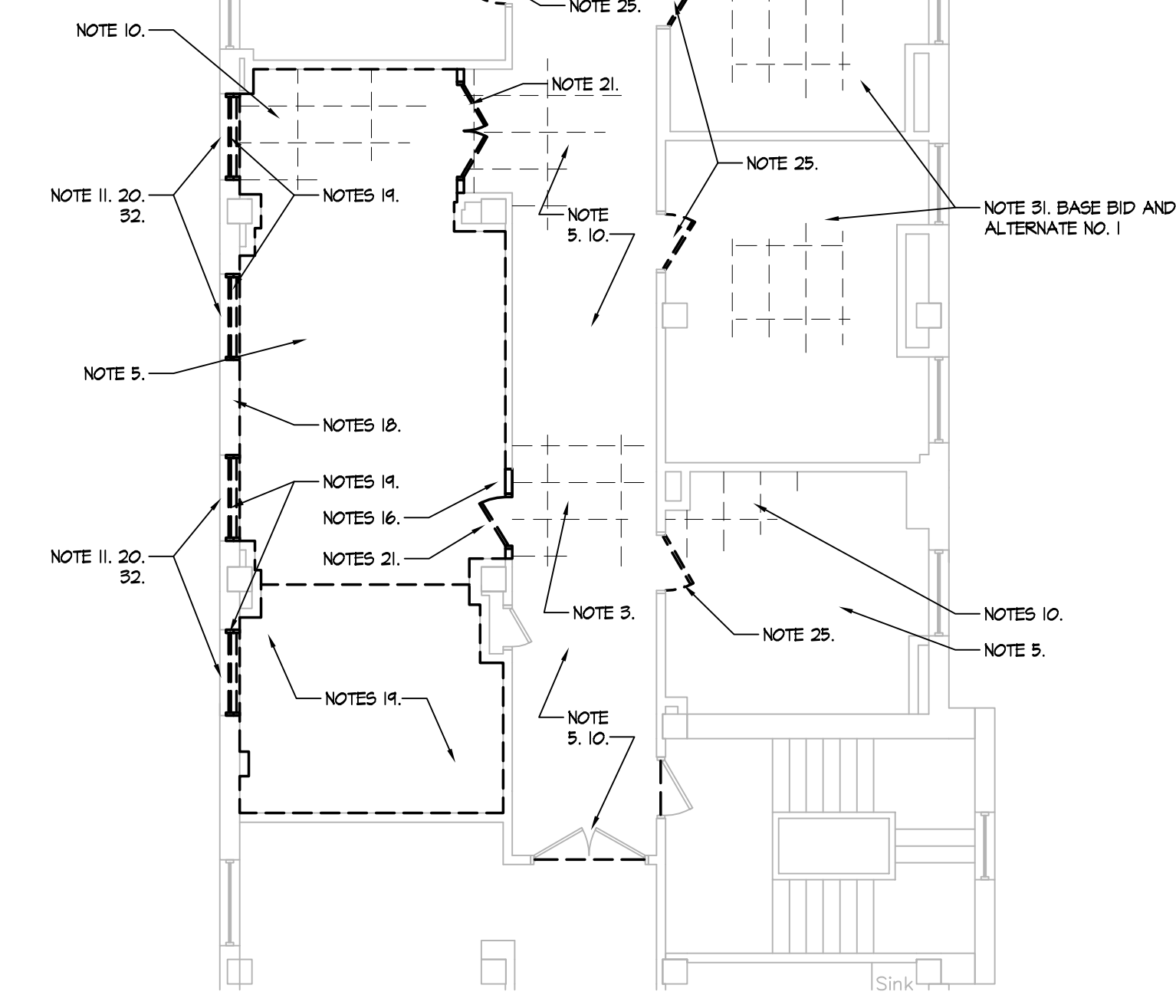
BASE BID DEMOLITION PLAN - 1st FLOOR
SCALE: 1/8" = 1'-0"



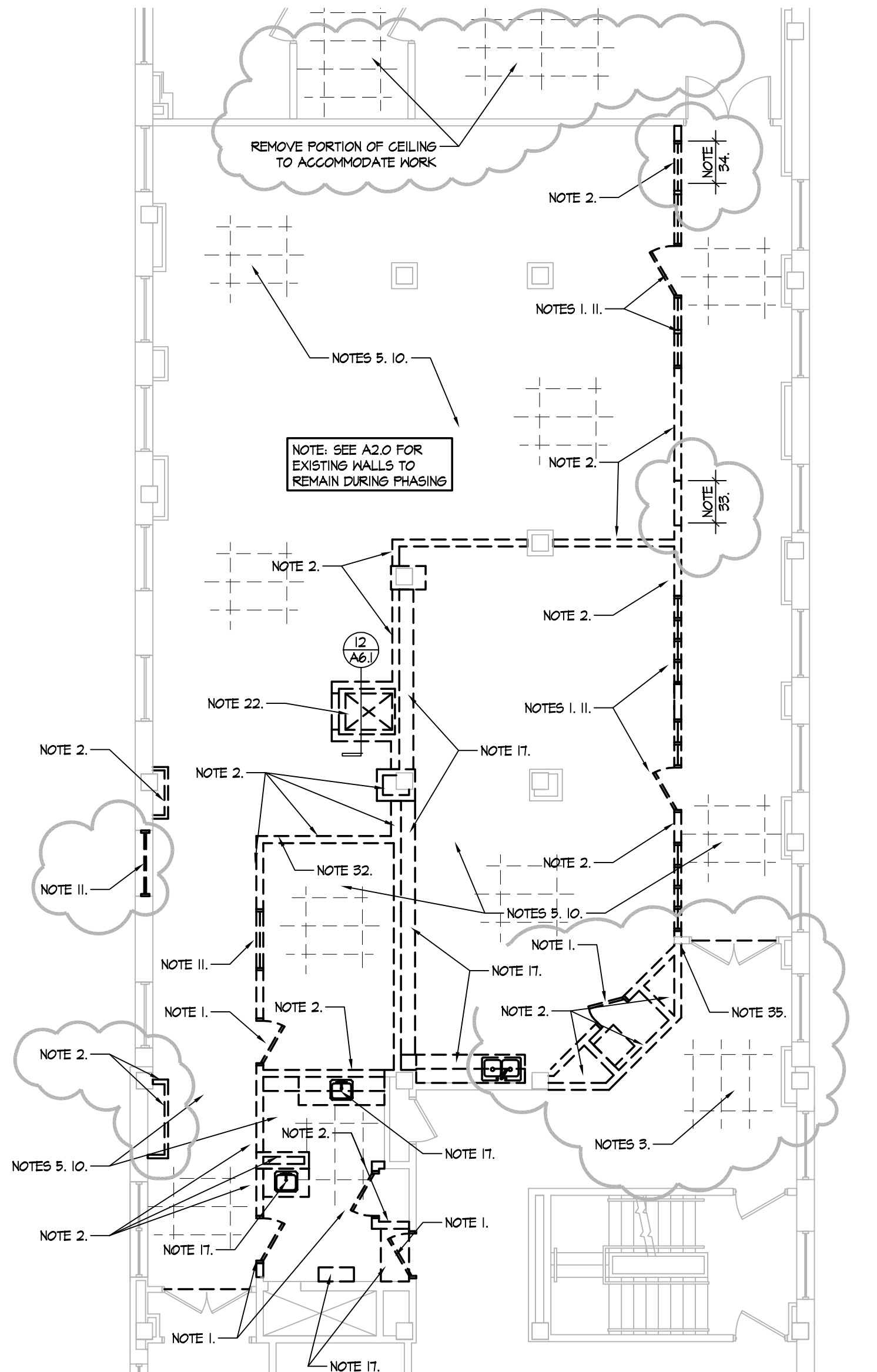
BASE BID DEMOLITION PLAN - 2nd FLOOR
SCALE: 1/8" = 1'-0"



ALTERNATE NO. 2 DEMOLITION PLAN - 2nd FLOOR
SCALE: 1/8" = 1'-0"



ALTERNATE NO. 1 DEMOLITION PLAN - 2nd FLOOR
SCALE: 1/8" = 1'-0"



OWNER CHANGES 6-13-2012 Date		IMPORTANT CONTRACTOR'S NOTE 1. ALL CONTRACTORS ARE RESPONSIBLE FOR REVIEWING ENTIRE SET OF DOCUMENTS TO DETERMINE THEIR FULL SCOPE OF WORK. CONTRACTOR SHALL NOT BE ALLOWED EXTRA COSTS DUE TO FAILURE TO REVIEW ENTIRE SET OF DOCUMENTS. 2. ANY USE OF THESE ELECTRONIC DRAWINGS OR SCALING OF THE PRINTED DOCUMENTS ARE DONE SO AT THE CONTRACTOR'S RISK.		ARCHITECT/ENGINEERS: CLH Calvin L. Hinz Architects, P.C. 3705 North 200th Street Elkhorn, Nebraska 68022 Phone: 402.291.6941 Fax: 402.291.9193		Drawing Title 1st AND 2nd FLOOR DEMOLITION PLANS		Project Title RENOVATE BACKFILL CANTEN SPACE NWCHS		Project Number 636-12-103		Office of Construction and Facilities Management Department of Veterans Affairs	
APPROVED PROJECT DIRECTOR KEVIN HUTSELL		CONSTRUCTION DOCUMENT (CD-3) SUBMITTAL (100%) April 13, 2012		Date APRIL 13, 2012		Checked CH		Drawn Drawn		Drawing Number A2.1		Dwg. 2 of 41	