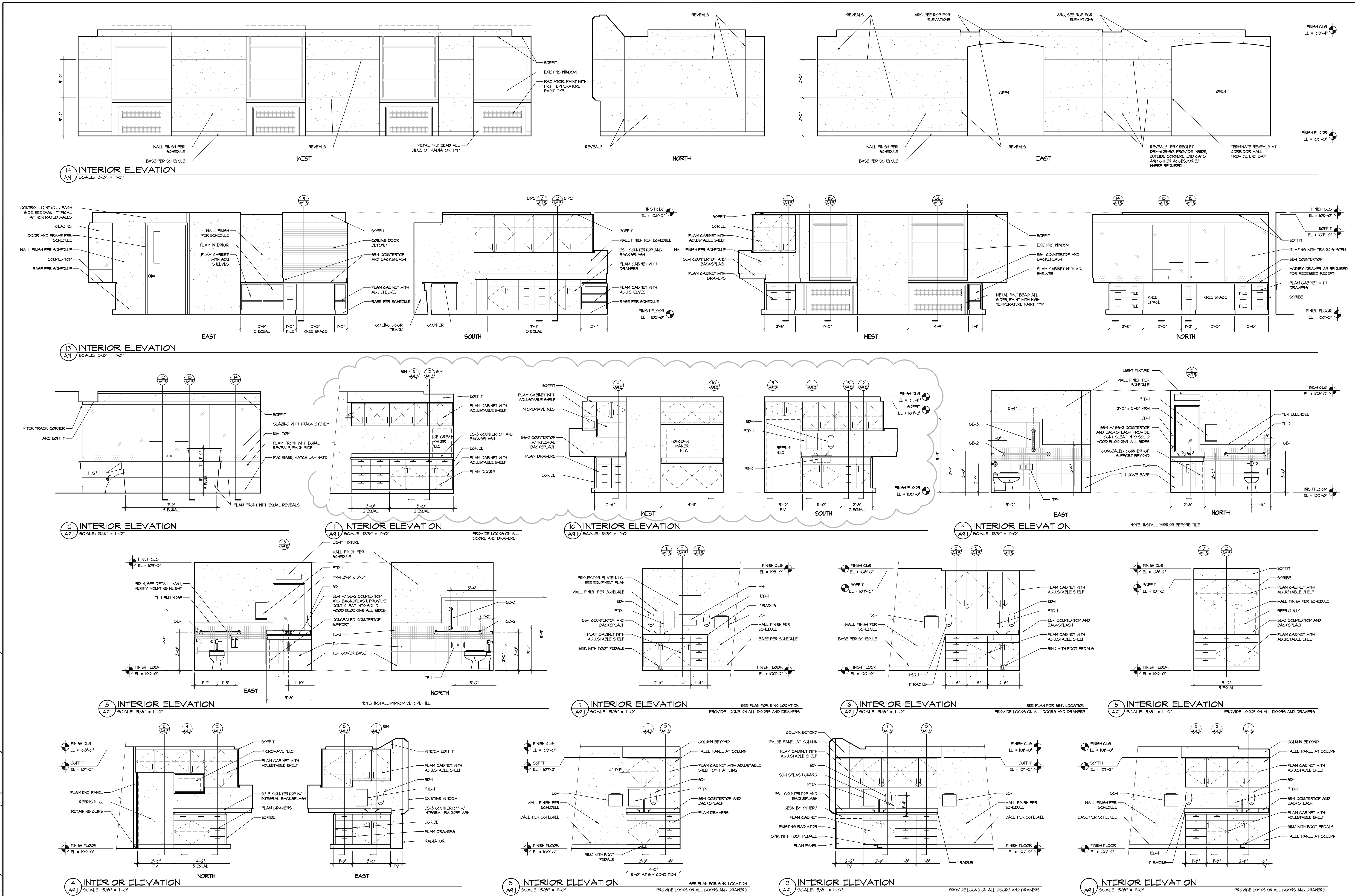


three inches = one foot
one and one half inches = one foot
one inch = one foot
three quarters inch = one foot
one half inch = one foot
one quarter inch = one foot
one eighth inch = one foot



OWNER CHANGES Revisions 6-13-2012 Date		© 2012 Calvin L. Hinz Architects P.C. These plans are specifically designed for construction by Calvin L. Hinz Architects and are intended for no other purposes. Permission for use of these electronic drawings or scaling of them in part or whole without written consent of Calvin L. Hinz Architects is prohibited.		IMPORTANT CONTRACTOR'S NOTE 1. ALL CONTRACTORS ARE RESPONSIBLE FOR REVIEWING ENTIRE SET OF DOCUMENTS TO DETERMINE THEIR FULL SCOPE OF WORK. CONTRACTOR SHALL NOT BE ALLOWED EXTRA COSTS DUE TO FAILURE TO REVIEW ENTIRE SET OF DOCUMENTS. 2. ANY USE OF THESE ELECTRONIC DRAWINGS OR SCALING OF THE PRINTED DOCUMENTS ARE DONE SO AT THE CONTRACTOR'S RISK.		CLH Calvin L. Hinz REGISTERED PROFESSIONAL ARCHITECT STATE OF NEBRASKA A-1793		ARCHITECT/ENGINEERS: Calvin L. Hinz Architects, P.C. 3705 North 200th Street Elkhorn, Nebraska 68022 Phone: 402.291.6941 Fax: 402.291.9193		KRS ENGINEERING 11600 ARBOR STREET SUITE 100 OMAHA, NEBRASKA 68144 PHONE: 402.932.0100 FAX: 402.932.1001 www.krsengineering.com KRS ■ COPYRIGHT 2011 This document, and the information contained may not be reproduced without the express written permission of KRS Engineering, LLC. Unauthorized copying, disclosure or construction use are prohibited by the copyright law.		Drawing Title INTERIOR ELEVATIONS Approved Project Director KEVIN HUTSELL		Project Title RENOVATE BACKFILL CANTEN SPACE NWCHS Location VAMC Grand Island, NE Date APRIL 13, 2012 Checked CH Drawn		Project Number 636-12-103 Building Number ONE Drawing Number A9.1 Dwg. 9 of 41		Office of Construction and Facilities Management Department of Veterans Affairs	
--	--	---	--	--	--	--	--	--	--	--	--	--	--	---	--	---	--	---	--