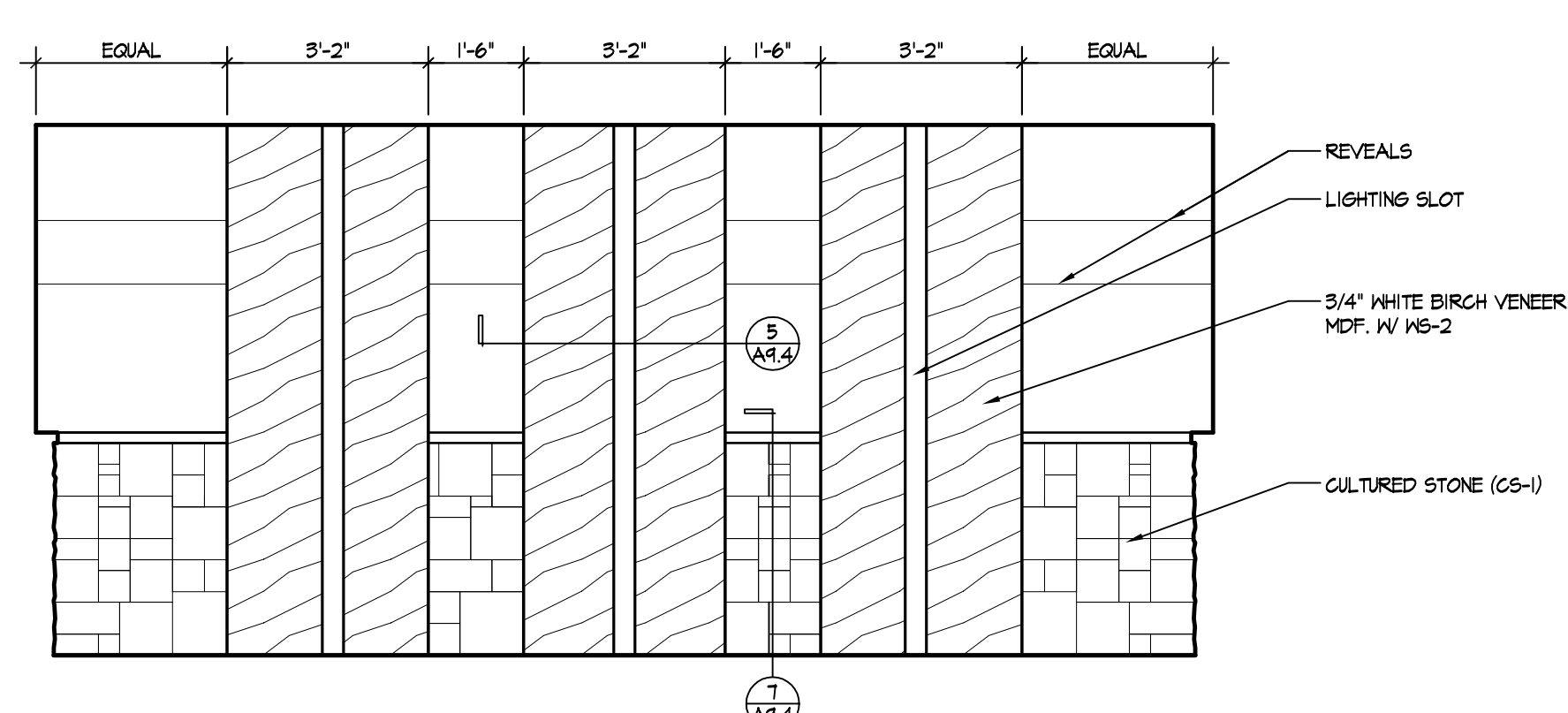
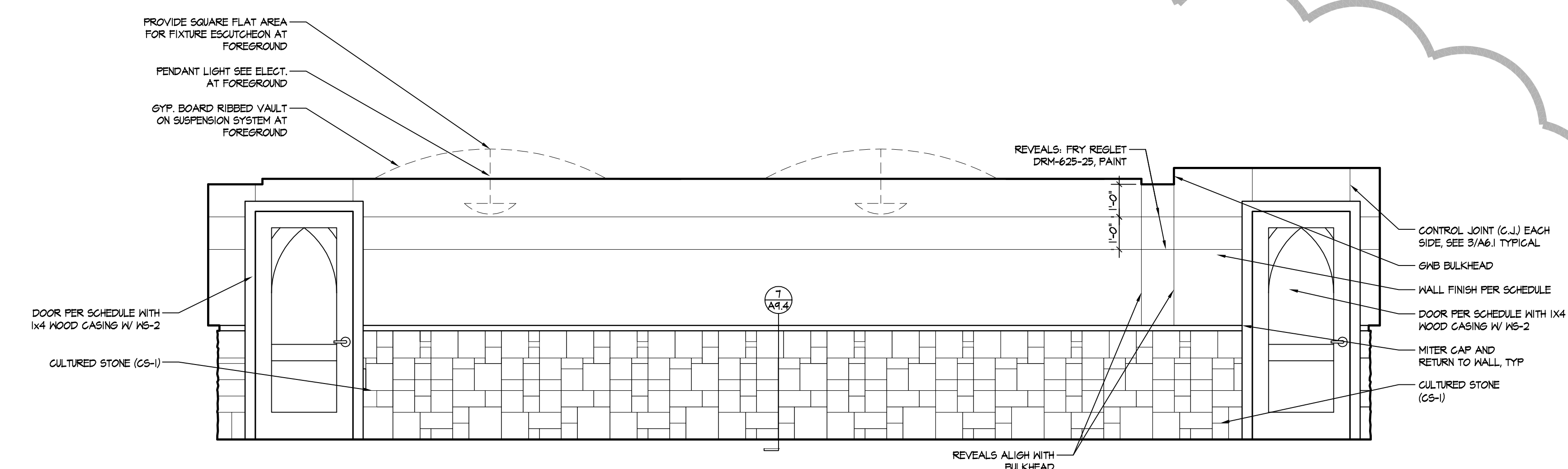


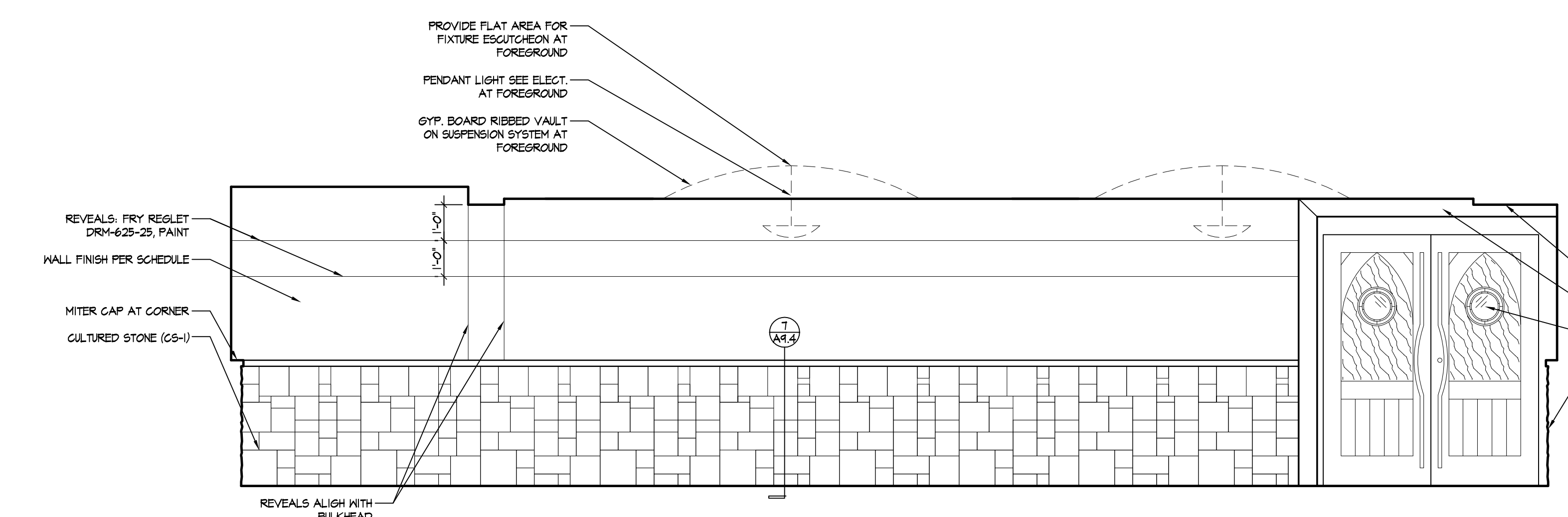
one eighth inch = one foot  
one quarter inch = one foot  
one half inch = one foot  
three eighths inch = one foot  
one inch = one foot  
one and one half inches = one foot  
two inches = one foot  
three inches = one foot  
four inches = one foot  
five inches = one foot  
six inches = one foot  
seven inches = one foot  
eight inches = one foot  
nine inches = one foot  
ten inches = one foot  
eleven inches = one foot  
twelve inches = one foot  
thirteen inches = one foot  
fourteen inches = one foot  
fifteen inches = one foot  
sixteen inches = one foot  
seventeen inches = one foot  
eighteen inches = one foot  
nineteen inches = one foot  
twenty inches = one foot  
twenty one inches = one foot  
twenty two inches = one foot  
twenty three inches = one foot  
twenty four inches = one foot  
twenty five inches = one foot  
twenty six inches = one foot  
twenty seven inches = one foot  
twenty eight inches = one foot  
twenty nine inches = one foot  
thirty inches = one foot  
thirty one inches = one foot  
thirty two inches = one foot  
thirty three inches = one foot  
thirty four inches = one foot  
thirty five inches = one foot  
thirty six inches = one foot  
thirty seven inches = one foot  
thirty eight inches = one foot  
thirty nine inches = one foot  
forty inches = one foot  
forty one inches = one foot  
forty two inches = one foot  
forty three inches = one foot  
forty four inches = one foot  
forty five inches = one foot  
forty six inches = one foot  
forty seven inches = one foot  
forty eight inches = one foot  
forty nine inches = one foot  
fifty inches = one foot  
fifty one inches = one foot  
fifty two inches = one foot  
fifty three inches = one foot  
fifty four inches = one foot  
fifty five inches = one foot  
fifty six inches = one foot  
fifty seven inches = one foot  
fifty eight inches = one foot  
fifty nine inches = one foot  
sixty inches = one foot  
sixty one inches = one foot  
sixty two inches = one foot  
sixty three inches = one foot  
sixty four inches = one foot  
sixty five inches = one foot  
sixty six inches = one foot  
sixty seven inches = one foot  
sixty eight inches = one foot  
sixty nine inches = one foot  
seventy inches = one foot  
seventy one inches = one foot  
seventy two inches = one foot  
seventy three inches = one foot  
seventy four inches = one foot  
seventy five inches = one foot  
seventy six inches = one foot  
seventy seven inches = one foot  
seventy eight inches = one foot  
seventy nine inches = one foot  
eighty inches = one foot  
eighty one inches = one foot  
eighty two inches = one foot  
eighty three inches = one foot  
eighty four inches = one foot  
eighty five inches = one foot  
eighty six inches = one foot  
eighty seven inches = one foot  
eighty eight inches = one foot  
eighty nine inches = one foot  
ninety inches = one foot  
ninety one inches = one foot  
ninety two inches = one foot  
ninety three inches = one foot  
ninety four inches = one foot  
ninety five inches = one foot  
ninety six inches = one foot  
ninety seven inches = one foot  
ninety eight inches = one foot  
ninety nine inches = one foot  
one hundred inches = one foot



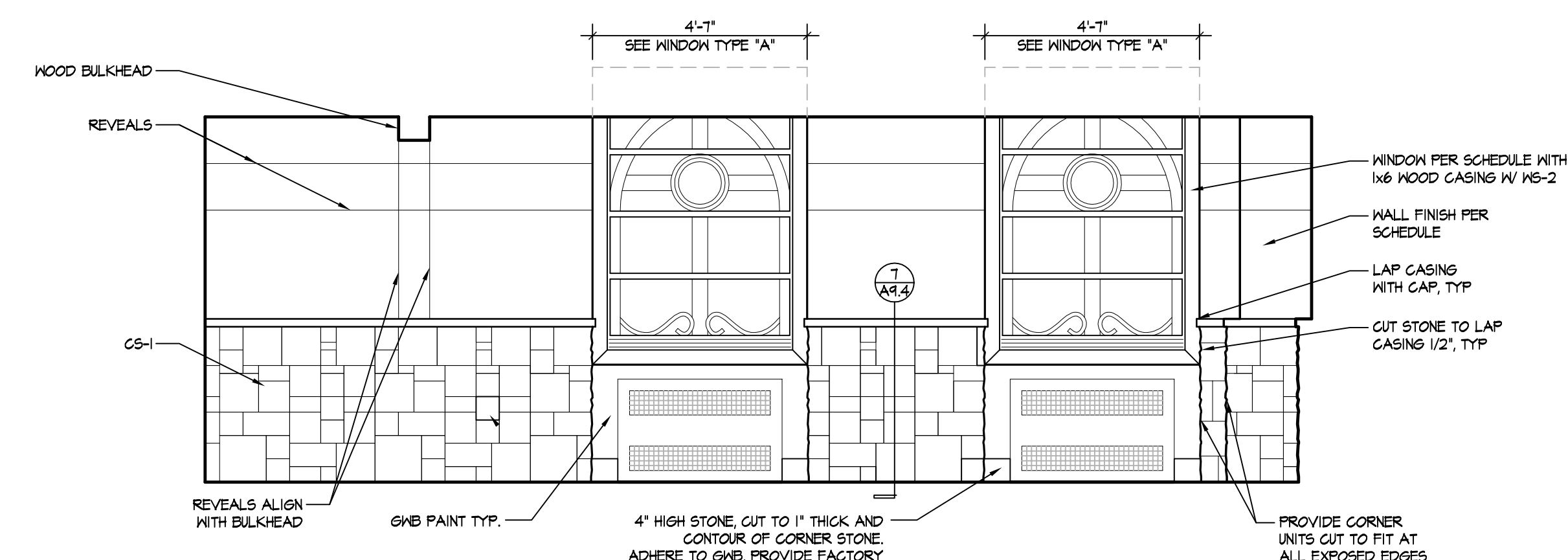
1 INTERIOR ELEVATION  
A9.4 SCALE: 3/8" = 1'-0"



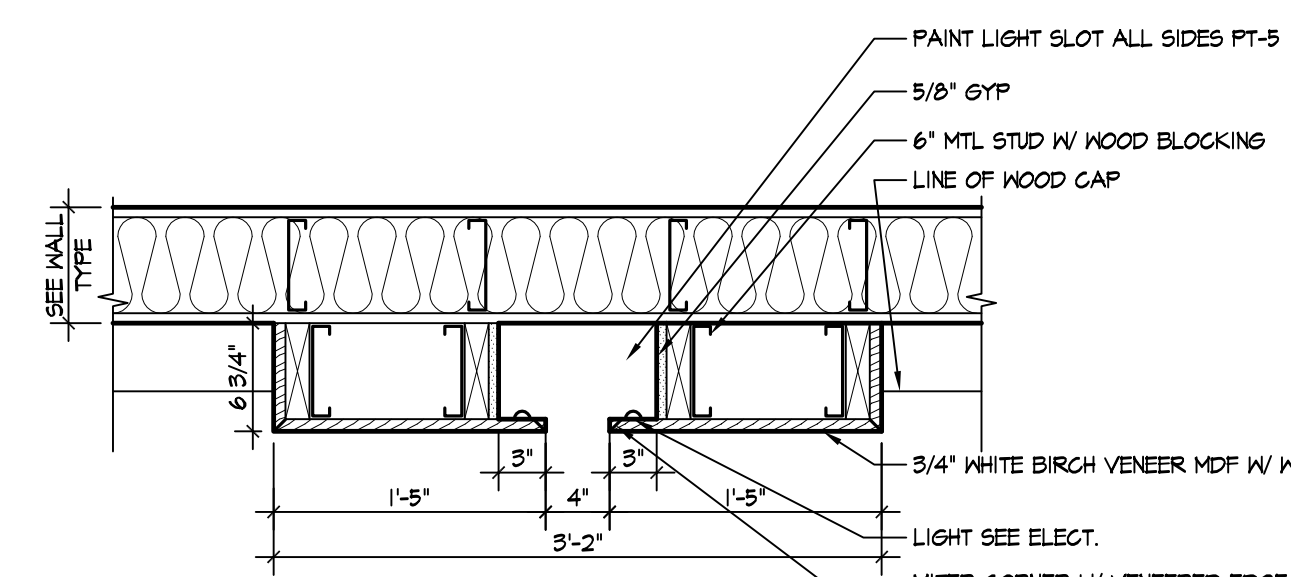
2 INTERIOR ELEVATION  
A9.4 SCALE: 3/8" = 1'-0"



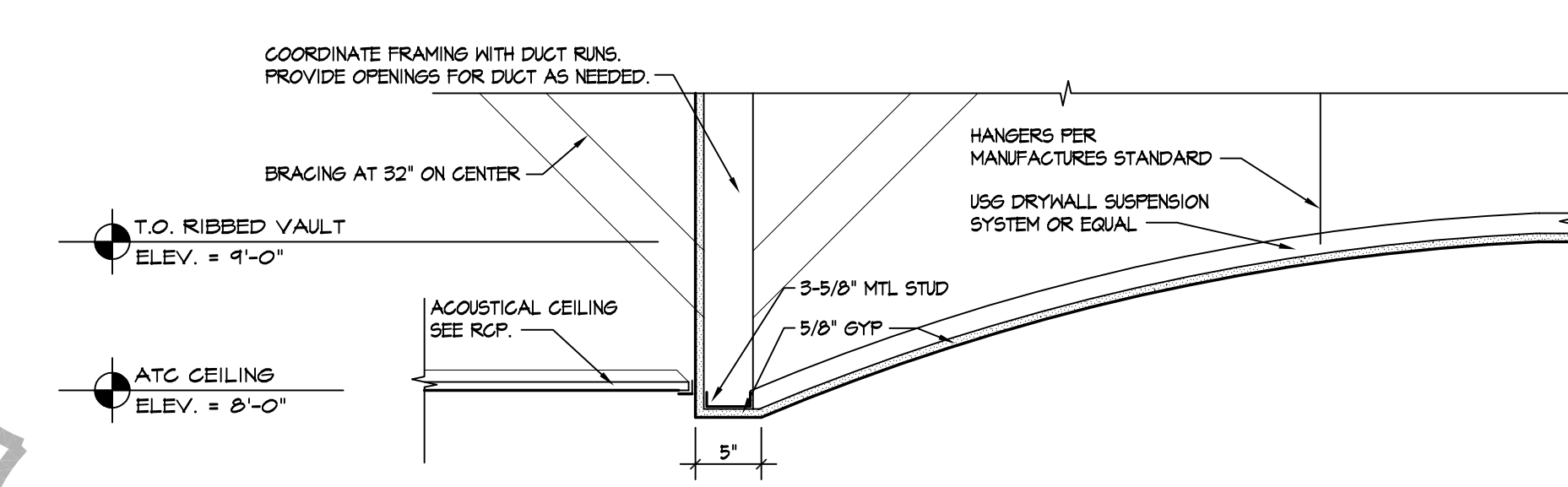
3 INTERIOR ELEVATION  
A9.4 SCALE: 3/8" = 1'-0"



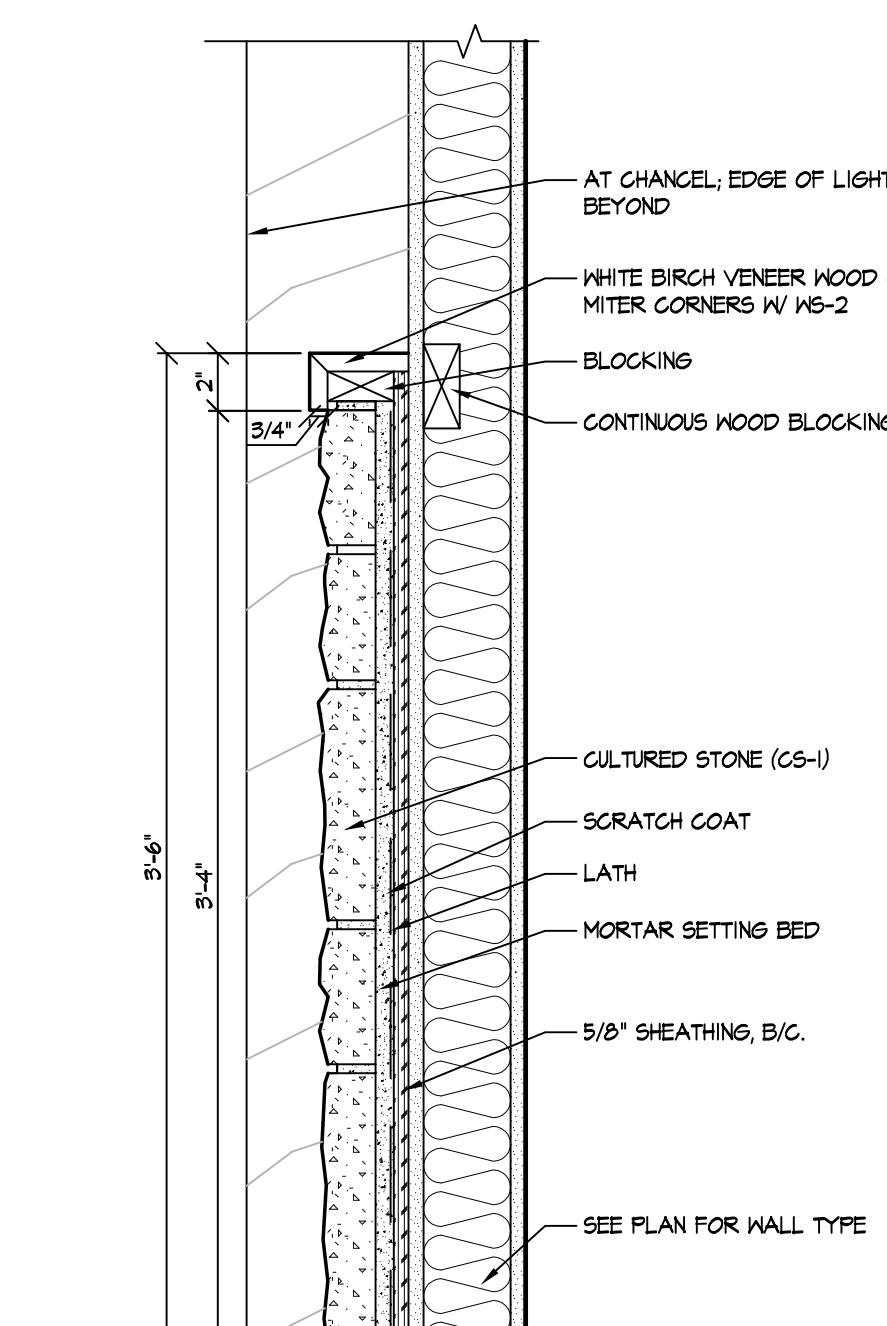
4 INTERIOR ELEVATION  
A9.4 SCALE: 3/8" = 1'-0"



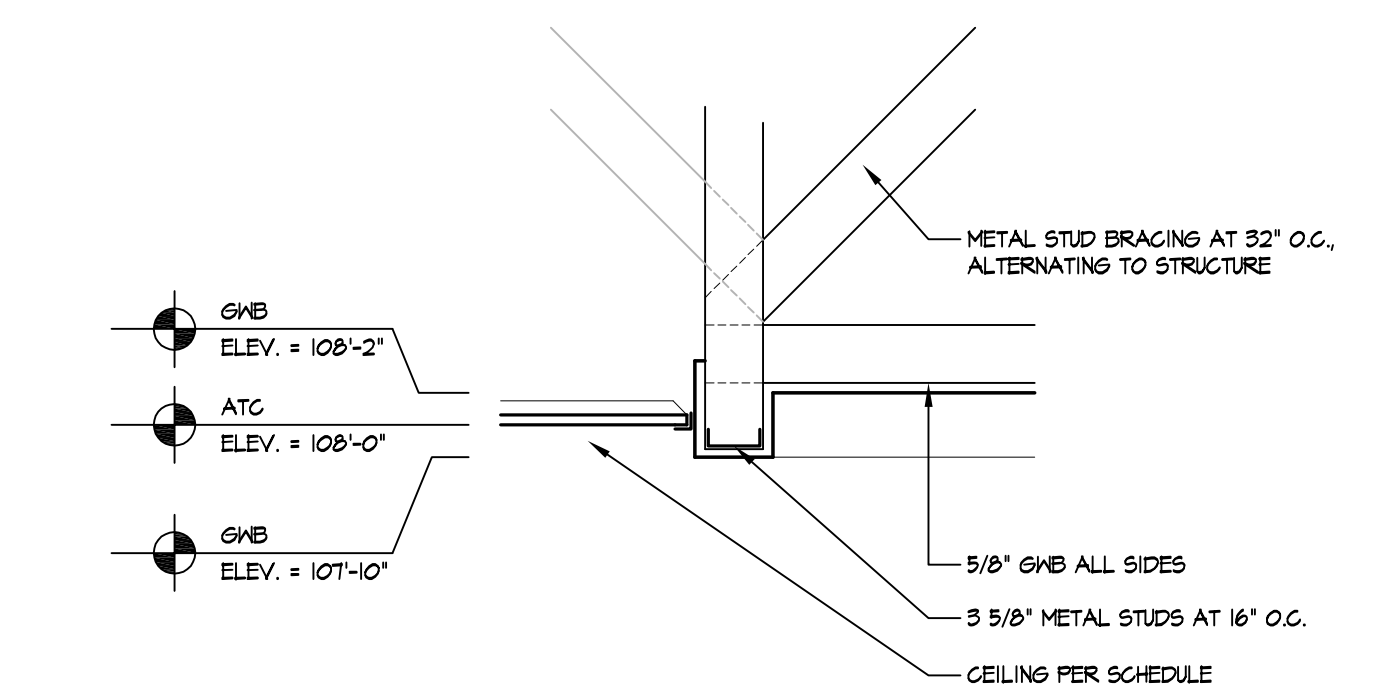
5 LIGHT SLOT PLAN DETAIL  
A9.4 SCALE: 1" = 1'-0"



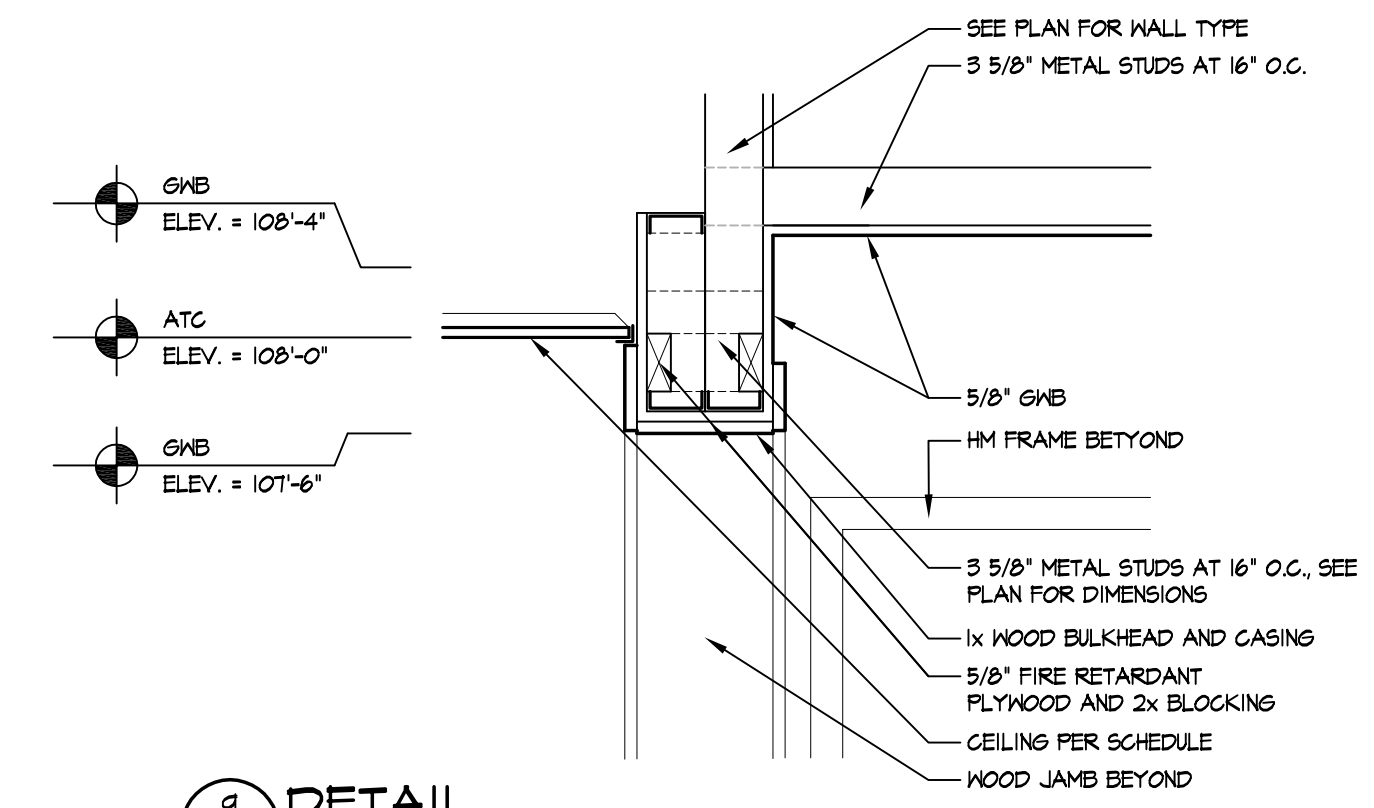
6 RIBBED VAULT DETAIL  
A9.4 SCALE: 1" = 1'-0"



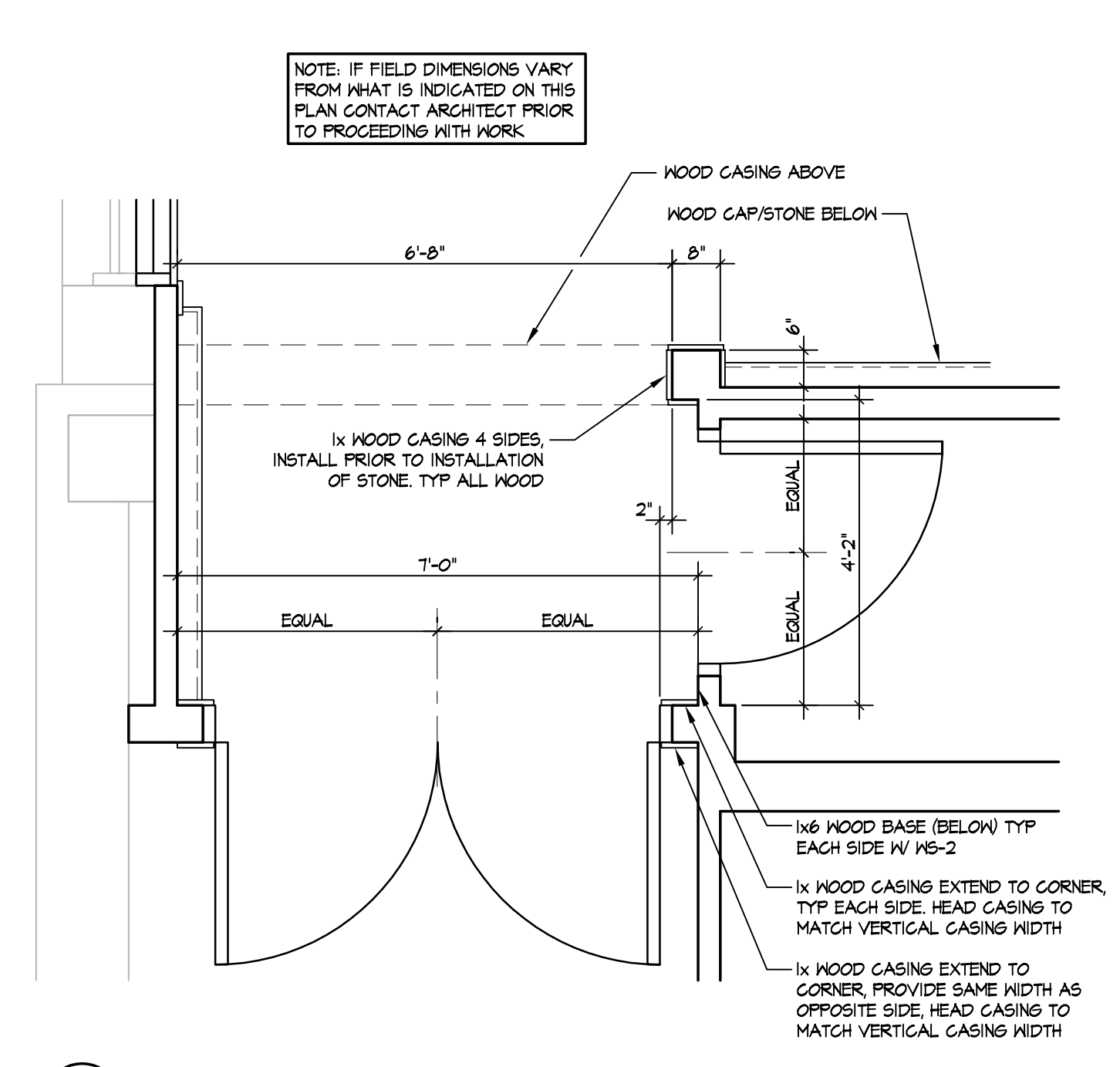
7 WOOD PANEL DETAIL  
A9.4 SCALE: 1 1/2" = 1'-0"



8 DETAIL  
A9.4 SCALE: 1" = 1'-0"



9 DETAIL  
A9.4 SCALE: 1" = 1'-0"

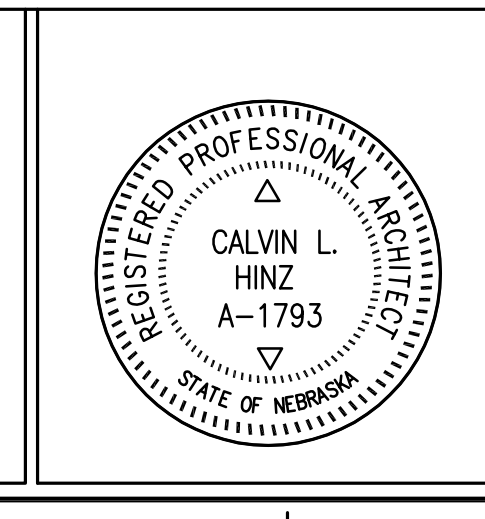


10 ENLARGED PLAN  
A9.4 SCALE: 1/2" = 1'-0"

OWNER CHANGES	6-13-2012
Revisions	Date

© 2012 Calvin L. Hinz Architects P.C.  
These plans are specifically designed for construction by Calvin L. Hinz Architects and are intended for no other purposes. Permission for use of this document in part or whole without written consent of Calvin L. Hinz Architects is prohibited.

**IMPORTANT CONTRACTOR'S NOTE**  
1. ALL CONTRACTORS ARE RESPONSIBLE FOR REVIEWING ENTIRE SET OF DOCUMENTS TO DETERMINE THEIR FULL SCOPE OF WORK. CONTRACTOR SHALL NOT BE ALLOWED EXTRA COSTS DUE TO FAILURE TO REVIEW ENTIRE SET OF DOCUMENTS.  
2. ANY USE OF THESE ELECTRONIC DRAWINGS OR SCALING OF THE PRINTED DOCUMENTS ARE DONE SO AT THE CONTRACTOR'S RISK.



**ARCHITECT/ENGINEERS:**  
**CLH**  
Calvin L. Hinz Architects, P.C.  
3705 North 200th Street  
Elkhorn, Nebraska 68022  
Phone: 402.291.6941 Fax: 402.291.9193

**KRS ENGINEERING**  
11620 ARBOR STREET SUITE 100  
OMAHA, NEBRASKA 68144  
PHONE: 402.932.0100  
FAX: 402.932.1001  
www.krsengineering.com  
KRS #  
COPYRIGHT 2011  
This document, and the information contained may not be reproduced without the express written permission of KRS Engineering, LLC. Unauthorized copying, disclosure or construction use are prohibited by the copyright law.

**Drawing Title**  
CHAPEL ELEVATIONS AND DETAILS  
**Approved Project Director**  
KEVIN HUTSELL  
**CONSTRUCTION DOCUMENT (CD-3) SUBMITTAL (100%)**  
April 13, 2012

**Project Title**  
RENOVATE BACKFILL CANTEN SPACE NWIHCs  
**Location**  
VAMC Grand Island, NE  
**Date**  
APRIL 13, 2012  
**Checked**  
CH  
**Drawn**

**Project Number**  
636-12-103  
**Building Number**  
ONE  
**Drawing Number**  
A9.4  
Dwg. 12 of 41

