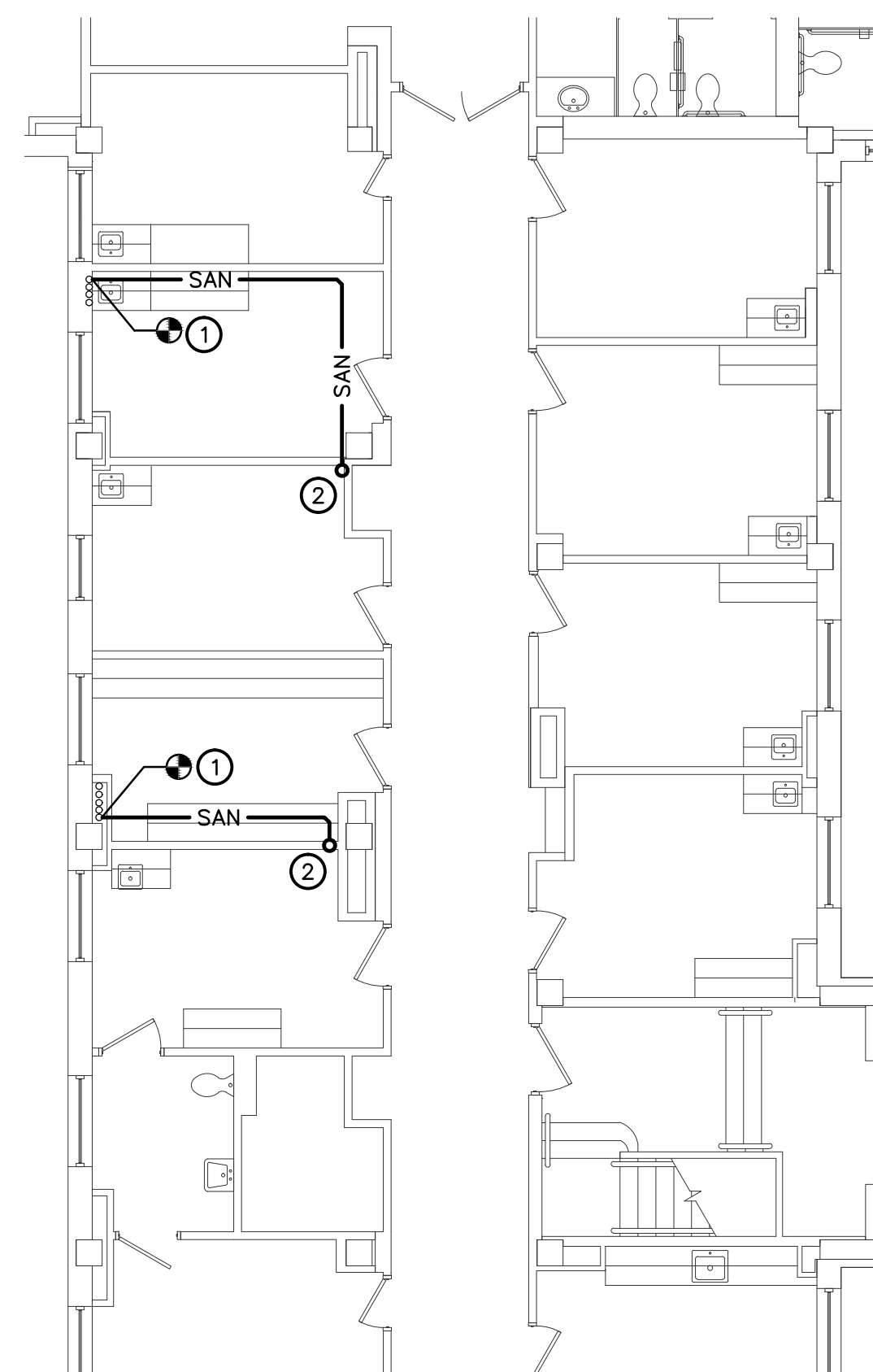


ALTERNATE NO. 2
4 PLUMBING PLAN - 1ST FLOOR
P1.3 SCALE: 1/4" = 1'-0"



ALTERNATE NO. 1
 (2) PLUMBING PLAN - 1st FLOOR
 P1.3 SCALE: 1/8" = 1'-0"



ALTERNATE NO. 1
PLUMBING PLAN - 1st FLOOR
SCALE: 1/8" = 1'-0"






GENERAL NOTES

1. EXISTING CONDITIONS ABOVE CEILINGS AND WITHIN VERTICAL CHASES ARE NOT FULLY KNOWN. FIELD VERIFY ACTUAL CONDITIONS AND ADJUST WORK AS REQUIRED. NOTIFY ENGINEER AND ARCHITECT IF EXISTING PIPING, DUCTWORK, OR EQUIPMENT TO REMAIN CONFLICTS WITH THE NEW DESIGN.
2. DURING CONSTRUCTION NO CEILING TILES IN PUBLIC AREAS CAN BE LEFT OPEN OVERNIGHT.
3. COORDINATE SCHEDULING OF ALL WORK REQUIRED OUTSIDE THE RENOVATION AREA INCLUDING FLOORS ABOVE AND BELOW THE RENOVATION AREA WITH OTHER SPACES ADJACENT TO THE RENOVATION WILL REMAIN OPERATIONAL DURING CONSTRUCTION.

PLUMBING KEYNOTES

- 1 CONNECT NEW 2" SANITARY TO EXISTING 2" SANITARY STACK. FIELD VERIFY EXACT LOCATION PRIOR TO INSTALLATION.
- 2 2" SANITARY UP TO SINK.
- 3 CONNECT NEW 2" SANITARY TO EXISTING 4" SANITARY.
- 4 2" SANITARY UP TO LAVATORY.
- 5 2" SANITARY UP TO ELECTRIC WATER COOLER.
- 6 4" SANITARY & 2" VENT UP AT WATER CLOSET.
- 7 2" SANITARY UP TO FLOOR DRAIN.
- 8 4" STORM, 4" SANITARY, 2 1/2" VENT, 2" CW, 1 1/4" HW, AND 3/4" HWC UP.
- 9 CONNECT NEW 4" STORM AND 2" VENT TO EXISTING 4" STORM AND 2" VENT.
- 10 CONNECT NEW 4" SANITARY, 2" CW, 1 1/4" HW, AND 3/4" HWC TO EXISTING 4" SANITARY, 2" CW, 1 1/4" HW, AND 3/4" HWC.
- 11 2" SANITARY UP TO URINAL.
- 12 4" SANITARY AND 2" VENT UP.
- 13 2" CW, 1" HW, AND 3/4" HWC UP.
- 14 CONNECT NEW 4" SANITARY, 2" VENT, 2" CW, 1" HW, AND 3/4" HWC TO EXISTING 4" SANITARY, 2" VENT, 2" CW, 1" HW, AND 3/4" HWC.
- 15 4" STORM, 4" SANITARY, 2 1/2" VENT, 2" CW, 1 1/4" HW, AND 3/4" HWC DOWN.
- 16 CONNECT NEW 4" STORM, 4" SANITARY, 2 1/2" VENT, 1 1/2" CW, 1" HW, AND 3/4" HWC TO EXISTING 4" STORM, 4" SANITARY, 2 1/2" VENT, 1 1/2" CW, 1" HW, AND 3/4" HWC.
- 17 4" SANITARY, 4" VENT, 2" CW, 1" HW, AND 3/4" HWC DOWN.
- 18 CONNECT NEW 1 1/2" CW, 1" HW, AND 3/4" HWC TO EXISTING 1 1/2" CW, 1" HW, AND 3/4" HWC.
- 19 CONNECT NEW 4" SANITARY AND 2" VENT TO EXISTING 4" SANITARY AND 2" VENT.
- 20 1 1/4" CW, 1 1/4" HW, 3/4" HWC, 4" VENT, AND 4" SANITARY UP. SEE SHEET P1.2 FOR CONTINUATION.
- 21 CONNECT NEW 1 1/4" CW, 1 1/4" HW, 3/4" HWC, AND 1 1/2" VENT TO EXISTING 1 1/4" CW, 1 1/4" HW, 3/4" HWC, AND 1 1/2" VENT.
- 22 SEE WASTE & VENT RISER DIAGRAM #1 AND DOMESTIC WATER RISER DIAGRAM #1 ON SHEET P2.1.
- 23 SEE WASTE & VENT RISER DIAGRAM #3 AND DOMESTIC WATER RISER DIAGRAM #3 ON SHEET P2.1.
- 24 4" SANITARY UP, 2" VENT UP. CONNECT TO EXISTING. SEE SHEET P1.2 FOR CONTINUATION.
- 25 CONNECT NEW 4" SANITARY AND 4" VENT TO EXISTING 4" SANITARY AND 4" VENT.

		© 2000 Calvin L. Hinz Architects P.C. These plans are specifically designed for construction by Calvin L. Hinz Architects and are intended for no other purposes. Permission for use of this document in part or whole without written consent of Calvin L. Hinz Architects is prohibited.		IMPORTANT CONTRACTOR'S NOTE 1. ALL CONTRACTORS ARE RESPONSIBLE FOR REVIEWING ENTIRE SET OF DOCUMENTS TO DETERMINE THEIR FULL SCOPE OF WORK. CONTRACTOR SHALL NOT BE ALLOWED EXTRA COSTS DUE TO FAILURE TO REVIEW ENTIRE SET OF DOCUMENTS. 2. ANY USE OF THESE ELECTRONIC DRAWINGS OR SCALING OF THE PRINTED DOCUMENTS ARE DONE SO AT THE CONTRACTORS RISK.		ARCHITECT/ENGINEERS: <div><div></div><div>Calvin L. HINZ Architects, P.C. 3705 North 200th Street Elkhorn, Nebraska 68022 Phone: 402.291.0941 Fax: 402.291.9193</div></div> <div><div></div><div>KRS Engineering, LLC 11400 ARBOR STREET SUITE 100 OMAHA, NEBRASKA 68144 PHONE : 402. 932. 0100 FAX: 402. 932. 1001 www.krsengineering.com</div></div> <div>COPYRIGHT 2012 121013 This document and the information contained may not be reproduced without the express written permission of KRS Engineering, LLC. Unintended copying, disclosure or construction use are prohibited by the copyright law.</div>		Drawing Title - ALT. #1 PLUMBING PLAN - 1st FLOOR - ALT. #2 PLUMBING PLAN - 1st FLOOR - ALT. #2 PLUMBING PLAN - 2nd FLOOR		Project Title RENOVAE BACKFILL CANTENEN SPACE NWIHCs		Project Number 636-12-103		<div>Office of Construction and Facilities Management</div> <div> Department of Veterans Affairs</div>					
OWNER CHANGES Revisions		6-13-2012 Date				Building Number ONE		Drawing Number P13 Dwg. 20 of 41		Location VAMC Grand Island, NE		Date APRIL 13, 2012				Checked MKL		Draw CER	
								Approved Project Director KEVIN HUTSELL		CONSTRUCTION DOCUMENT (CD-3) SUBMITTAL 100X APRIL 13, 2012									