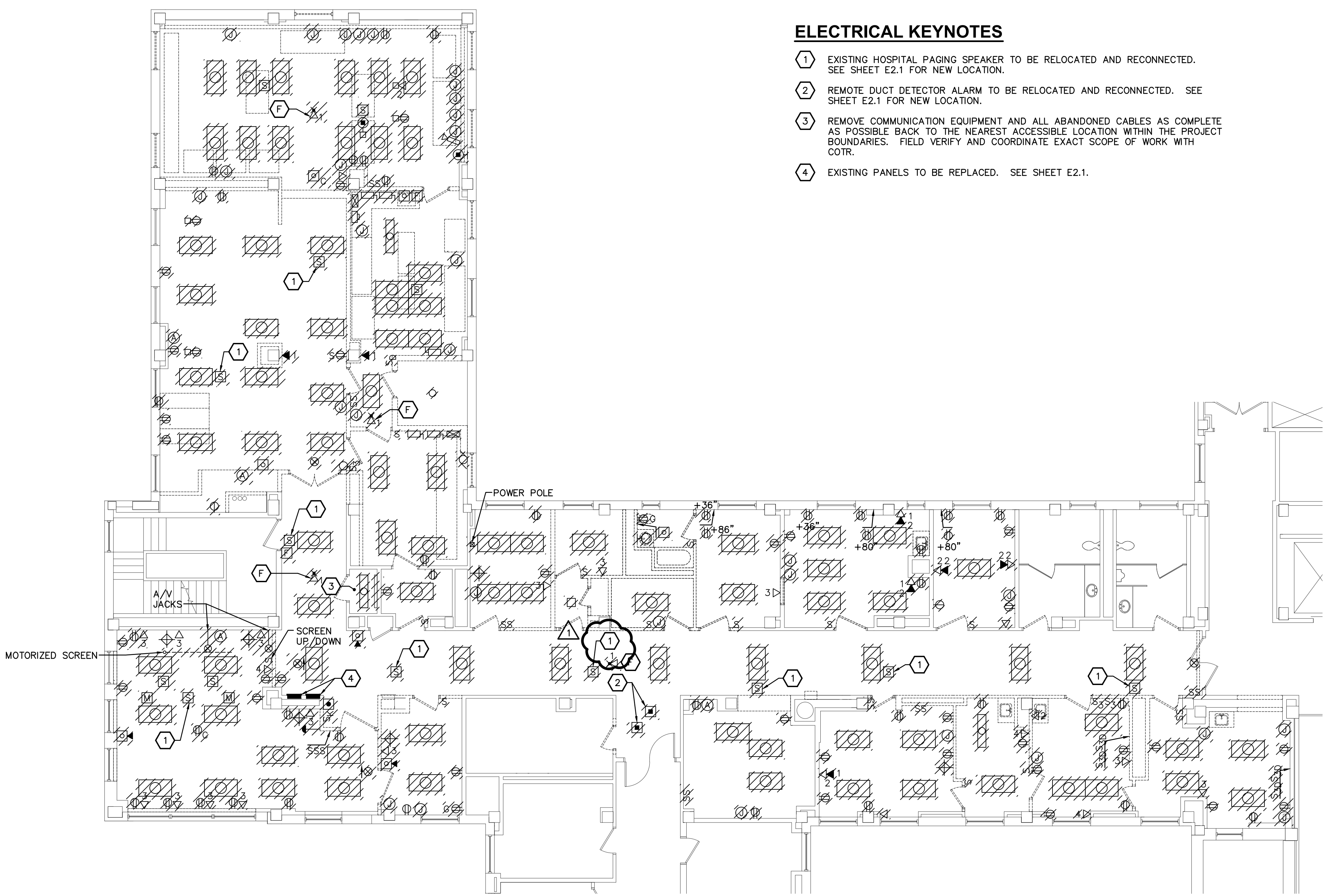
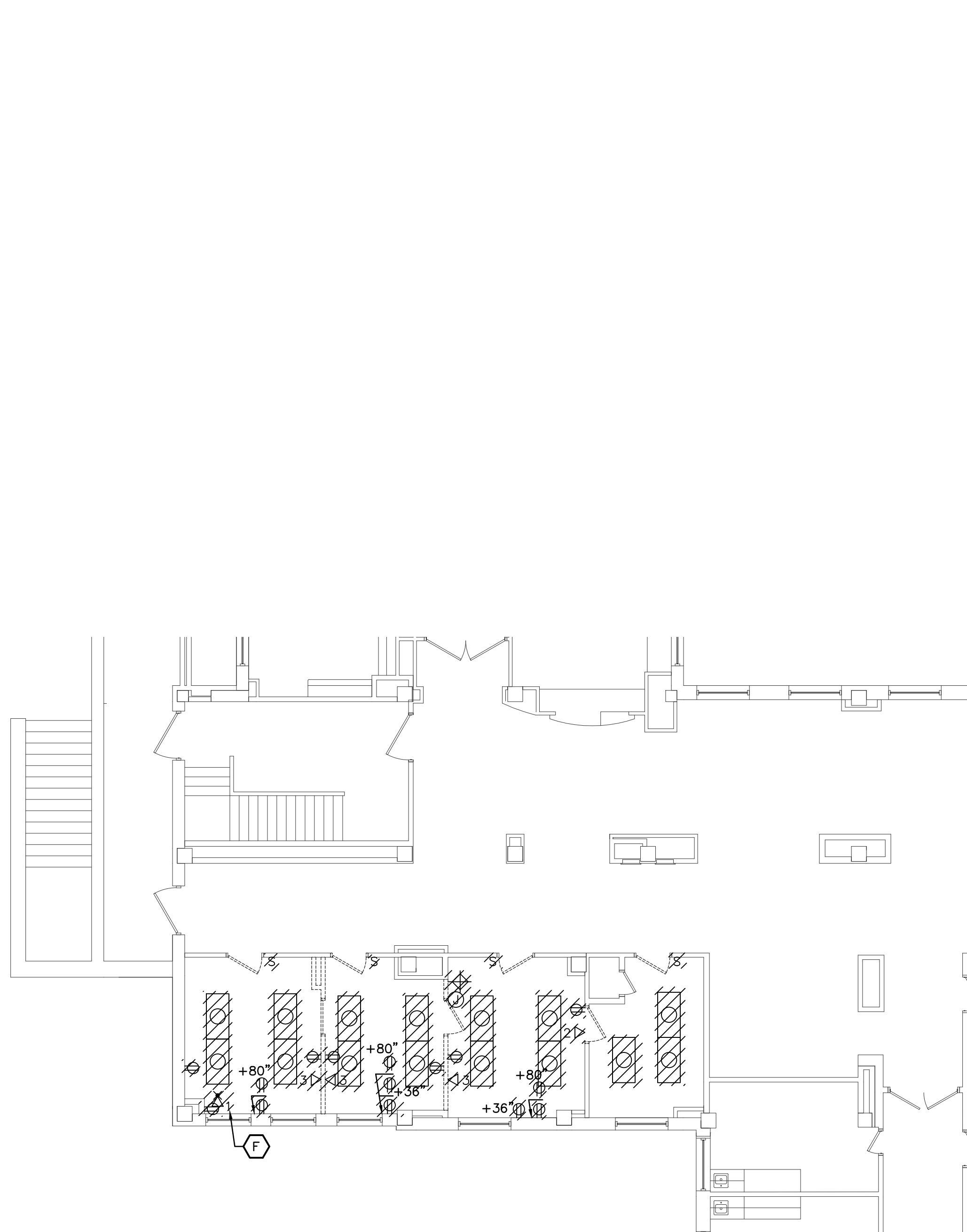


one eighth inch = one foot
one quarter inch = one foot
three eighths inch = one foot
one half inch = one foot
three quarters inch = one foot
one inch = one foot
one and one half inches = one foot
two inches = one foot
three inches = one foot
four inches = one foot
five inches = one foot
six inches = one foot
seven inches = one foot
eight inches = one foot
nine inches = one foot
ten inches = one foot
eleven inches = one foot
twelve inches = one foot
thirteen inches = one foot
fourteen inches = one foot
fifteen inches = one foot
sixteen inches = one foot
seventeen inches = one foot
eighteen inches = one foot
nineteen inches = one foot
twenty inches = one foot
twenty one inches = one foot
twenty two inches = one foot
twenty three inches = one foot
twenty four inches = one foot
twenty five inches = one foot
twenty six inches = one foot
twenty seven inches = one foot
twenty eight inches = one foot
twenty nine inches = one foot
thirty inches = one foot
thirty one inches = one foot
thirty two inches = one foot
thirty three inches = one foot
thirty four inches = one foot
thirty five inches = one foot
thirty six inches = one foot
thirty seven inches = one foot
thirty eight inches = one foot
thirty nine inches = one foot
forty inches = one foot
forty one inches = one foot
forty two inches = one foot
forty three inches = one foot
forty four inches = one foot
forty five inches = one foot
forty six inches = one foot
forty seven inches = one foot
forty eight inches = one foot
forty nine inches = one foot
fifty inches = one foot
fifty one inches = one foot
fifty two inches = one foot
fifty three inches = one foot
fifty four inches = one foot
fifty five inches = one foot
fifty six inches = one foot
fifty seven inches = one foot
fifty eight inches = one foot
fifty nine inches = one foot
sixty inches = one foot
sixty one inches = one foot
sixty two inches = one foot
sixty three inches = one foot
sixty four inches = one foot
sixty five inches = one foot
sixty six inches = one foot
sixty seven inches = one foot
sixty eight inches = one foot
sixty nine inches = one foot
seventy inches = one foot
seventy one inches = one foot
seventy two inches = one foot
seventy three inches = one foot
seventy four inches = one foot
seventy five inches = one foot
seventy six inches = one foot
seventy seven inches = one foot
seventy eight inches = one foot
seventy nine inches = one foot
eighty inches = one foot
eighty one inches = one foot
eighty two inches = one foot
eighty three inches = one foot
eighty four inches = one foot
eighty five inches = one foot
eighty six inches = one foot
eighty seven inches = one foot
eighty eight inches = one foot
eighty nine inches = one foot
ninety inches = one foot
ninety one inches = one foot
ninety two inches = one foot
ninety three inches = one foot
ninety four inches = one foot
ninety five inches = one foot
ninety six inches = one foot
ninety seven inches = one foot
ninety eight inches = one foot
ninety nine inches = one foot
one hundred inches = one foot



ELECTRICAL KEYNOTES

- 1 EXISTING HOSPITAL PAGING SPEAKER TO BE RELOCATED AND RECONNECTED. SEE SHEET E2.1 FOR NEW LOCATION.
- 2 REMOTE DUCT DETECTOR ALARM TO BE RELOCATED AND RECONNECTED. SEE SHEET E2.1 FOR NEW LOCATION.
- 3 REMOVE COMMUNICATION EQUIPMENT AND ALL ABANDONED CABLES AS COMPLETE AS POSSIBLE BACK TO THE NEAREST ACCESSIBLE LOCATION WITHIN THE PROJECT BOUNDARIES. FIELD VERIFY AND COORDINATE EXACT SCOPE OF WORK WITH COTR.
- 4 EXISTING PANELS TO BE REPLACED. SEE SHEET E2.1.

GENERAL ELECTRICAL DEMOLITION NOTES

- a. THE CONTRACTOR SHALL COORDINATE AND SCHEDULE ALL NECESSARY POWER OUTAGES WITH THE OWNERS REPRESENTATIVE PRIOR TO PROCEEDING WITH WORK TO INSURE THAT OPERATIONS IN ADJACENT OCCUPIED PORTIONS OF THE BUILDING ARE NOT INTERRUPTED OR RESTRICTED WITHOUT PRIOR APPROVAL.
- b. THE CONTRACTOR SHALL BE RESPONSIBLE FOR REPAIRING, PAINTING OR REPLACEMENT OF ALL WALL, CEILING, OR OTHER BUILDING ELEMENTS WHICH ARE DISTURBED AS PART OF THE DEMOLITION OR INSTALLATION OF ELECTRICAL WORK.
- c. THE CONTRACTOR SHALL COMPLETELY REMOVE ALL WIRING, CONDUIT, SWITCHES, DISCONNECTS, LIGHTING FIXTURES AND OTHER ASSOCIATED ITEMS AS SHOWN (CROSSHATCHED). THE ITEMS INDICATED SPECIFICALLY ON THE DRAWINGS TO BE REMOVED ARE ONLY TO INDICATE IN GENERAL TO THE CONTRACTOR THE AMOUNT OF DEMOLITION WORK INVOLVED. A SITE INVESTIGATION BY THE CONTRACTOR SHOULD BE PERFORMED TO AID IN DETERMINING THE COMPLETE EXTENT OF WORK INVOLVED.
- d. ALL EXISTING BRANCH CIRCUITS BEING REMOVED SHALL BE REMOVED AS COMPLETE AS POSSIBLE. EXISTING CONDUCTORS SHALL BE REMOVED COMPLETELY FROM THEIR RACEWAYS, DISPOSED OF AS SCRAP. REMOVED FROM SITE AND NOT REUSED EXCEPT WHERE SPECIFICALLY NOTED OTHERWISE. WHERE AN EXISTING DEVICE IS SHOWN REMOVED FROM AN EXISTING CIRCUIT, NEW WIRING SHALL BE PROVIDED AS REQUIRED TO INSURE CONTINUITY OF EXISTING CIRCUIT. ELECTRICAL RACEWAYS WHERE STUBBED FROM A CONCRETE FLOOR OR WALL SHALL BE CHISELED 2 INCHES BELOW SURFACE, GROUTED AND SCALED.
- e. ALL EXISTING LIGHT FIXTURES, LAMPS, AND ELECTRICAL EQUIPMENT SHOWN TO BE REMOVED SHALL BE REMOVED BY THE CONTRACTOR. EXISTING FIXTURES AND EQUIPMENT CONSIDERED SALVAGEABLE BY THE OWNER AND NOT SHOWN TO BE REUSED SHALL BE TURNED OVER TO THE OWNER OR REMOVED FROM SITE AS DIRECTED BY OWNER. LAMPS AND BALLASTS THAT ARE CONSIDERED AS HAZARDOUS WASTE SHALL BE DISPOSED OF PROPERLY.
- f. ALL EXISTING SURFACE MOUNTED BACKBOXES, CONDUIT, WIREWAY, JUNCTION BOXES, ETC. SHOWN REMOVED SHALL BE REMOVED IN THEIR ENTIRETY. ALL RECESSED BACKBOXES, JUNCTION BOXES SHOWN REMOVED SHALL BE ABANDONED IN PLACE AND COVERED WITH STAINLESS STEEL COVER PLATES. ALL RECESSED CONDUIT SHALL BE ABANDONED IN PLACE AND CAPPED OFF IN A SUITABLE MANNER PER LOCAL INSPECTORS REQUIREMENTS.
- g. REMOVE ELECTRICAL CONNECTIONS TO ALL MECHANICAL EQUIPMENT BEING REMOVED BY DIVISION 15. COORDINATE EQUIPMENT REMOVAL LOCATIONS WITH MECHANICAL DRAWINGS.

OWNER CHANGES Revisions 6-13-2012 Date		IMPORTANT CONTRACTOR'S NOTE 1. ALL CONTRACTORS ARE RESPONSIBLE FOR REVIEWING ENTIRE SET OF DOCUMENTS TO DETERMINE THEIR FULL SCOPE OF WORK. CONTRACTOR SHALL NOT BE ALLOWED EXTRA COSTS DUE TO FAILURE TO REVIEW ENTIRE SET OF DOCUMENTS. 2. ANY USE OF THESE ELECTRONIC DRAWINGS OR SCALING OF THE PRINTED DOCUMENTS ARE DONE SO AT THE CONTRACTORS RISK.		ARCHITECT/ENGINEERS: CLH Calvin L. Hinz Architects, P.C. 3705 North 200th Street Elkhorn, Nebraska 68022 Phone: 402.291.6941 Fax: 402.291.9193 KRS KRS Engineering, LLC 11620 ARBOR STREET SUITE 100 OMAHA, NEBRASKA 68144 PHONE: 402.932.0100 FAX: 402.932.1001 www.krsengineering.com KRS # 121013 COPYRIGHT 2012 This document and the information contained may not be reproduced without the express written permission of KRS Engineering, LLC. Unauthorized copying, disclosure or construction use are prohibited by the copyright law.		Drawing Title - BASE BID ELECTRICAL DEMOLITION PLAN - 1st FLOOR - BASE BID ELECTRICAL DEMOLITION PLAN - 2nd FLOOR Approved Project Director KEVIN HUTSELL CONSTRUCTION DOCUMENT (CD-3) SUBMITTAL 100% APRIL 13, 2012		Project Title RENOVATE BACKFILL CANTEN SPACE NWIHCs Location VAMC Grand Island, NE Date APRIL 13, 2012 Checked KJM Drawn GJH		Project Number 636-12-103 Building Number ONE Drawing Number ED1.1 Dwg. 35 of 41		Office of Construction and Facilities Management Department of Veterans Affairs	
--	--	---	--	---	--	---	--	--	--	---	--	---	--