

A

B

C

D

E

F

G

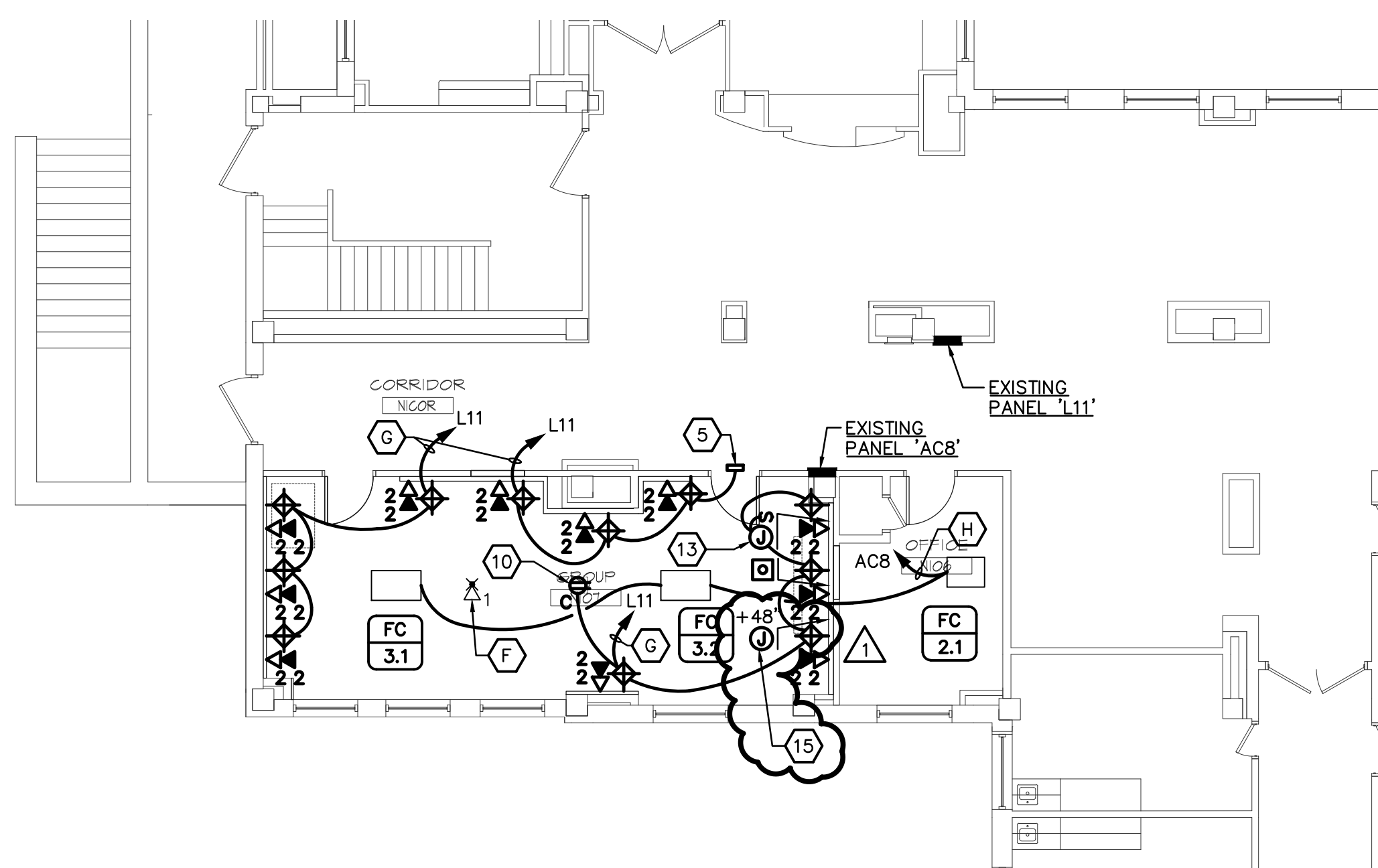
H

I

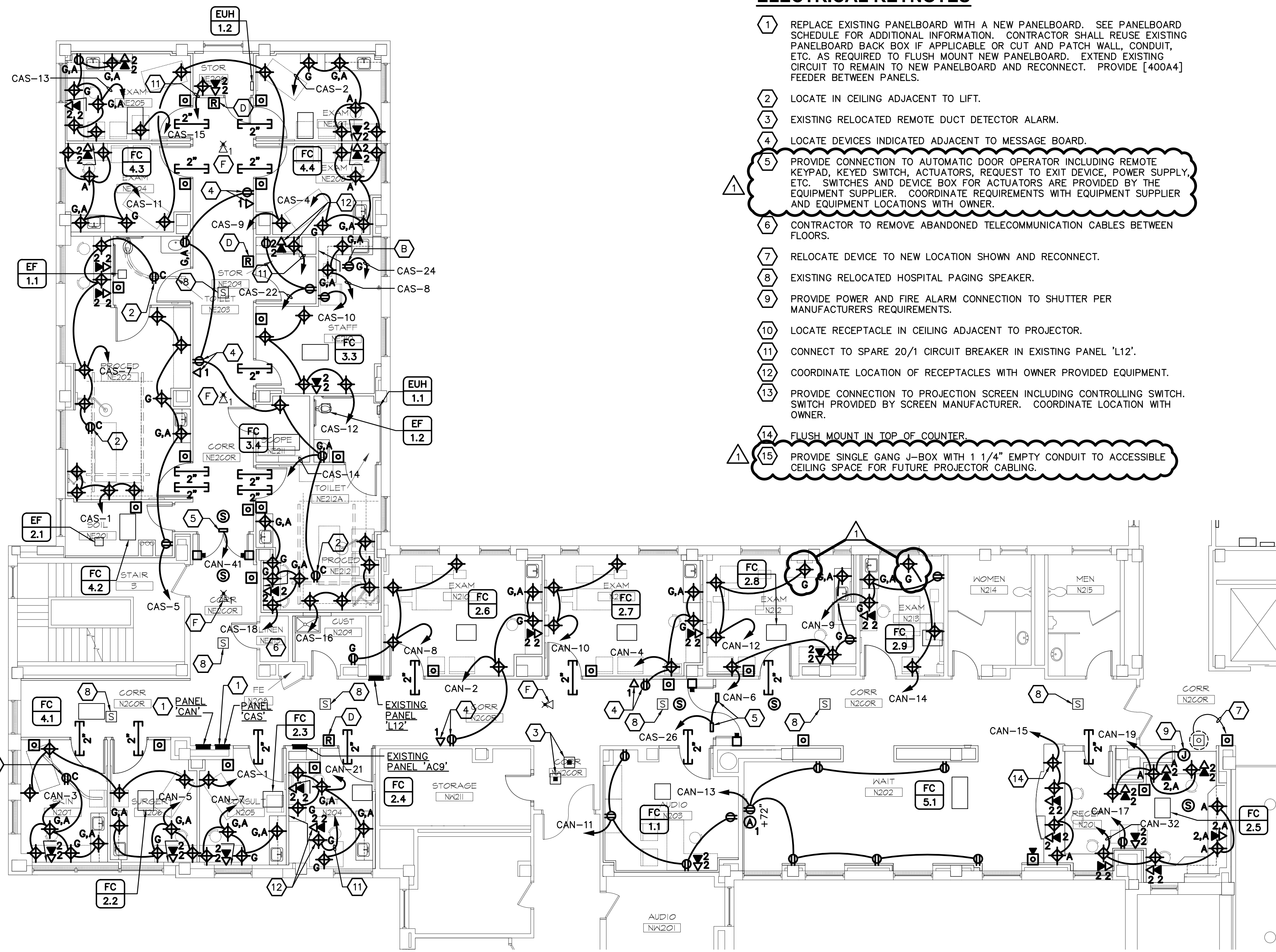
J

K

three inches = one foot
one and one half inches = one foot
one inch = one foot
three quarters inch = one foot
one half inch = one foot
three eighths inch = one foot
one quarter inch = one foot
one eighth inch = one foot



BASE BID
POWER & SPECIAL SYSTEMS PLAN - 1st FLOOR
SCALE: 1/8" = 1'-0"



BASE BID
POWER & SPECIAL SYSTEMS PLAN - 2nd FLOOR
SCALE: 1/8" = 1'-0"



ELECTRICAL KEYNOTES

- REPLACE EXISTING PANELBOARD WITH A NEW PANELBOARD. SEE PANELBOARD SCHEDULE FOR ADDITIONAL INFORMATION. CONTRACTOR SHALL REUSE EXISTING PANELBOARD BACK BOX IF APPLICABLE OR CUT AND PATCH WALL, CONDUIT, ETC. AS REQUIRED TO FLUSH MOUNT NEW PANELBOARD. EXTEND EXISTING CIRCUIT TO REMAIN TO NEW PANELBOARD AND RECONNECT. PROVIDE [400A4] FEEDER BETWEEN PANELS.
- LOCATE IN CEILING ADJACENT TO LIFT.
- EXISTING RELOCATED REMOTE DUCT DETECTOR ALARM.
- LOCATE DEVICES INDICATED ADJACENT TO MESSAGE BOARD.
- PROVIDE CONNECTION TO AUTOMATIC DOOR OPERATOR INCLUDING REMOTE KEYPAD, KEYED SWITCH, ACTUATORS. REQUEST TO EXIT DEVICE, POWER SUPPLY, ETC. SWITCHES AND DEVICE BOX FOR ACTUATORS ARE PROVIDED BY THE EQUIPMENT SUPPLIER. COORDINATE REQUIREMENTS WITH EQUIPMENT SUPPLIER AND EQUIPMENT LOCATIONS WITH OWNER.
- CONTRACTOR TO REMOVE ABANDONED TELECOMMUNICATION CABLES BETWEEN FLOORS.
- RELOCATE DEVICE TO NEW LOCATION SHOWN AND RECONNECT.
- EXISTING RELOCATED HOSPITAL PAGING SPEAKER.
- PROVIDE POWER AND FIRE ALARM CONNECTION TO SHUTTER PER MANUFACTURERS REQUIREMENTS.
- LOCATE RECEPTACLE IN CEILING ADJACENT TO PROJECTOR.
- CONNECT TO SPARE 20/1 CIRCUIT BREAKER IN EXISTING PANEL 'L12'.
- COORDINATE LOCATION OF RECEPTACLES WITH OWNER PROVIDED EQUIPMENT.
- PROVIDE CONNECTION TO PROJECTION SCREEN INCLUDING CONTROLLING SWITCH. SWITCH PROVIDED BY SCREEN MANUFACTURER. COORDINATE LOCATION WITH OWNER.
- FLUSH MOUNT IN TOP OF COUNTER.
- PROVIDE SINGLE GANG J-BOX WITH 1 1/4" EMPTY CONDUIT TO ACCESSIBLE CEILING SPACE FOR FUTURE PROJECTOR CABLING.

PANEL CAN									
208/120 VOLT, 3 PHASE, 4 WIRE									
400 AMP M.L.O.									
AIC: 22000 AMPS SYM									
FLUSH MOUNTED									
PROVIDE FEED-THRU LUGS									
CCT NO	LOAD DESCRIPTION	LOAD V.A.	REMARKS	P	AMP SIZE	Ø	AMP SIZE	P	REMARKS
1	EXAM BED	1000		1	20	A	20	1	
3	SKIN	1440		1	20	B	20	1	
5	SURGERY	1440		1	20	C	20	1	
7	CONSULT	1980		1	20	A	20	1	
9	EXAM BED	1000		1	20	B	20	1	
11	AUDIO	800		1	20	C	20	1	
13	WAIT	1200		1	20	A	20	1	
15	RECEPT.	1440		1	20	B	20	1	
17	RECEPT., COPIER	1200		1	20	C	30	2	[30A2]
19	RECEPT.	1260		1	20	A	-	-	
21	FIT	1800		1	20	B	40	2	[40A2]
23	EUH-1.2	1500		1	20	C	-	-	
25	EUH-1.1	1500		1	20	A	30	1	[30A2]
27	SPARE (EXISTING CIRCUIT)			1	20	B	20	1	
29	SPARE (EXISTING CIRCUIT)			1	20	C	30	1	[30A2]
31	SPARE (EXISTING CIRCUIT)			1	20	A	20	1	
33	SPARE (EXISTING CIRCUIT)			1	20	B	20	1	
35	SPARE (EXISTING CIRCUIT)			1	20	C	-	-	
37	FC-2.6, 2.7, 2.8, 2.9	672		1	20	A	-	-	
39	FC-2.4, 5.1, 2.5	756		1	20	B	-	-	
41	DOOR OPERATOR	500		1	20	C	-	-	
REMARKS:									
[] = CIRCUIT SIZE.									

PANEL CAS									
208/120 VOLT, 3 PHASE, 4 WIRE									
400 AMP M.L.O.									
AIC: 22000 AMPS SYM									
FLUSH MOUNTED									
CCT NO	LOAD DESCRIPTION	LOAD V.A.	REMARKS	P	AMP SIZE	Ø	AMP SIZE	P	REMARKS
1	PROCEDURE	1440		1	20	A	20	1	
3	EXAM LIGHT	1000		1	20	B	20	1	
5	PROCEDURE	1620		1	20	C	20	1	
7	PROCEDURE	1620		1	20	A	20	1	
9	EXAM BEDS	1200		1	20	B	20	1	
11	EXAM	1800		1	20	C	20	1	
13	EXAM	1980		1	20	A	20	1	
15	EXAM	400		1	20	B	20	1	
17	REFRIGERATOR	1200		1	20	C	20	1	
19	SKIN SURG. CONS., FIT	1000		1	20	A	20	1	
21	EXAM (4)	1150		1	20	B	20	1	
23	SOIL. PROC., EXAM (2)	1425		1	20	C	20	1	
25	SCOPE, STAFF, EXAM (2)	1250		1	20	A	20	1	
27	PROC. CUST. STOR.	875		1	20	B	-	-	
29	SPARE (EXISTING CIRCUIT)			1	20	C	-	-	
31	SPARE (EXISTING CIRCUIT)			1	20	A	-	-	
33	SPARE (EXISTING CIRCUIT)			1	20	B	-	-	
35	SPARE (EXISTING CIRCUIT)			1	20	C	-	-	
37	CORR., AUDIO	825		1	20	A	-	-	
39	CORR.	400		1	20	B	-	-	
41	WAIT, RECEPT.	900		1	20	C	-	-	

OWNER CHANGES
Revisions
6-13-2012
Date

© 2000 Calvin L. Hinz Architects P.C.
These plans are specifically designed for construction by Calvin L. Hinz Architects and are intended for no other purposes. Permission for use of this document in part or whole without written consent of Calvin L. Hinz Architects is prohibited.

IMPORTANT
CONTRACTOR'S NOTE
1. ALL CONTRACTORS ARE RESPONSIBLE FOR REVIEWING ENTIRE SET OF DOCUMENTS TO DETERMINE THEIR FULL SCOPE OF WORK. CONTRACTOR SHALL NOT BE ALLOWED EXTRA COSTS DUE TO FAILURE TO REVIEW ENTIRE SET OF DOCUMENTS.
2. ANY USE OF THESE ELECTRONIC DRAWINGS OR SCALING OF THE PRINTED DOCUMENTS ARE DONE SO AT THE CONTRACTORS RISK.

CLH
Calvin L. Hinz
Architects, P.C.
3705 North 200th Street
Elkhorn, Nebraska 68022
Phone: 402.291.6941 Fax: 402.291.9193

KRS
KRS Engineering
11620 ARBOR STREET SUITE 100
OMAHA, NEBRASKA 68144
PHONE: 402.932.0100
FAX: 402.932.1001
www.krsengineering.com
COPYRIGHT 2012
This document and the information contained may not be reproduced without the express written permission of KRS Engineering, LLC. Unauthorized copying, disclosure or construction use are prohibited by the copyright law.

Drawing Title
- BASE BID POWER AND SPECIAL SYSTEMS PLAN - 1st FLOOR
- BASE BID POWER AND SPECIAL SYSTEMS PLAN - 2nd FLOOR
Approved Project Director
KEVIN HUTSELL

Project Title
RENOVATE BACKFILL CANTEN SPACE NWIHCs
Location
VAMC Grand Island, NE
Date
APRIL 13, 2012
Checked
KJM
Drawn
GJH

Project Number
636-12-103
Building Number
ONE
Drawing Number
E21
Dwg. 39 of 41

Office of Construction and Facilities Management
Department of Veterans Affairs

VA FORM 08-6231 1 2 3 4 5 6 7 8 9