

# GENERAL SHEET NOTES

- MECHANICAL CONTRACTOR SHALL FIELD VERIFY WITH CONTRACTING OFFICER, THE MAXIMUM DIMENSIONS AVAILABLE FOR TRANSPORTING THE AHU INTO THE MECHANICAL ROOM AND SHALL HAVE THE UNITS SHIPPED AS REQUIRED. THEN THE MECHANICAL CONTRACTOR SHALL FIELD ASSEMBLE THE UNITS PER THE MANUFACTURER'S RECOMMENDATIONS. A REPRESENTATIVE OF THE AHU MANUFACTURER SHALL PROVIDE A WRITTEN REPORT TO THE CONTRACTING OFFICER THAT GIVES THE MANUFACTURER'S APPROVAL OF THE INSTALLED AHU.
- THE MECHANICAL CONTRACTOR SHALL CONFIRM THE EXISTING HOUSEKEEPING PAD WIDTH (APPROXIMATELY 109") AND LENGTH. EXTEND EXISTING HOUSEKEEPING PAD AS REQUIRED TO PROVIDE 6" AROUND UNIT. SEE DETAIL.
- MAKE NEW PIPING CONNECTION WITH WET TAPS. PROVIDE VALVES IN NEW PIPES AT CONNECTION POINTS.
- MODIFY EXISTING FIRE SPRINKLERS AS REQUIRED TO ALLOW INSTALLATION OF NEW SUPPLY AND RETURN DUCTWORK AND UNIT.

# SHEET KEYNOTES (#)

- PROVIDE SUPPLY AIR SMOKE DAMPER SIZED FOR UNIT SUPPLY DISCHARGE OPENING.
- PROVIDE RETURN AIR SMOKE DAMPER SIZED FOR UNIT RETURN INLET OPENING.
- PROVIDE 16x16 ACCESS DOOR.
- PROVIDE BUTTERFLY VALVES.
- PROVIDE CIRCUIT SETTER IN HOT WATER RETURN PIPING.
- PROVIDE VARIABLE FREQUENCY DRIVE WITH MANUAL BYPASS, LOCKING DISCONNECT SWITCH AND INPUT AND OUTPUT LINE REACTORS.
- PROVIDE MANUAL VOLUME DAMPERS.

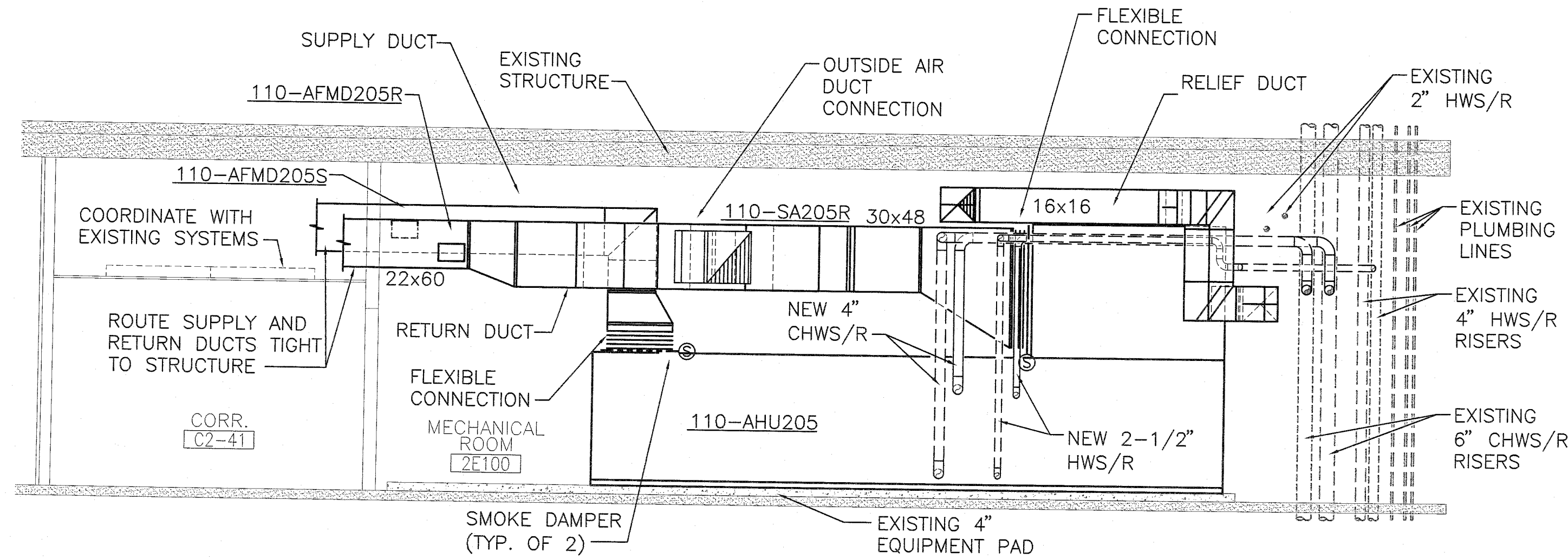
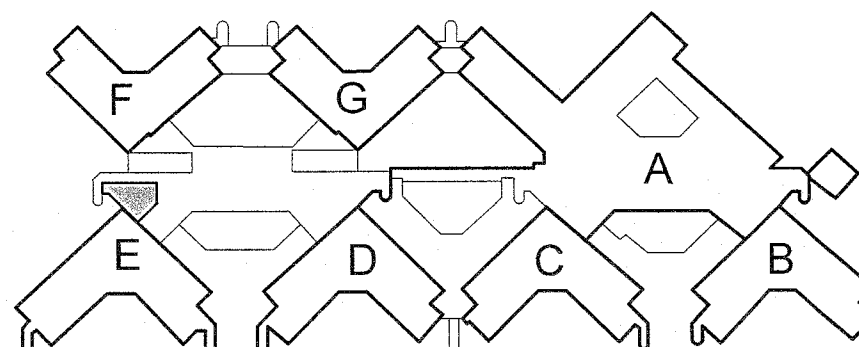
# COORDINATION DRAWINGS

SEE COVER SHEET FOR COORDINATION NOTES.

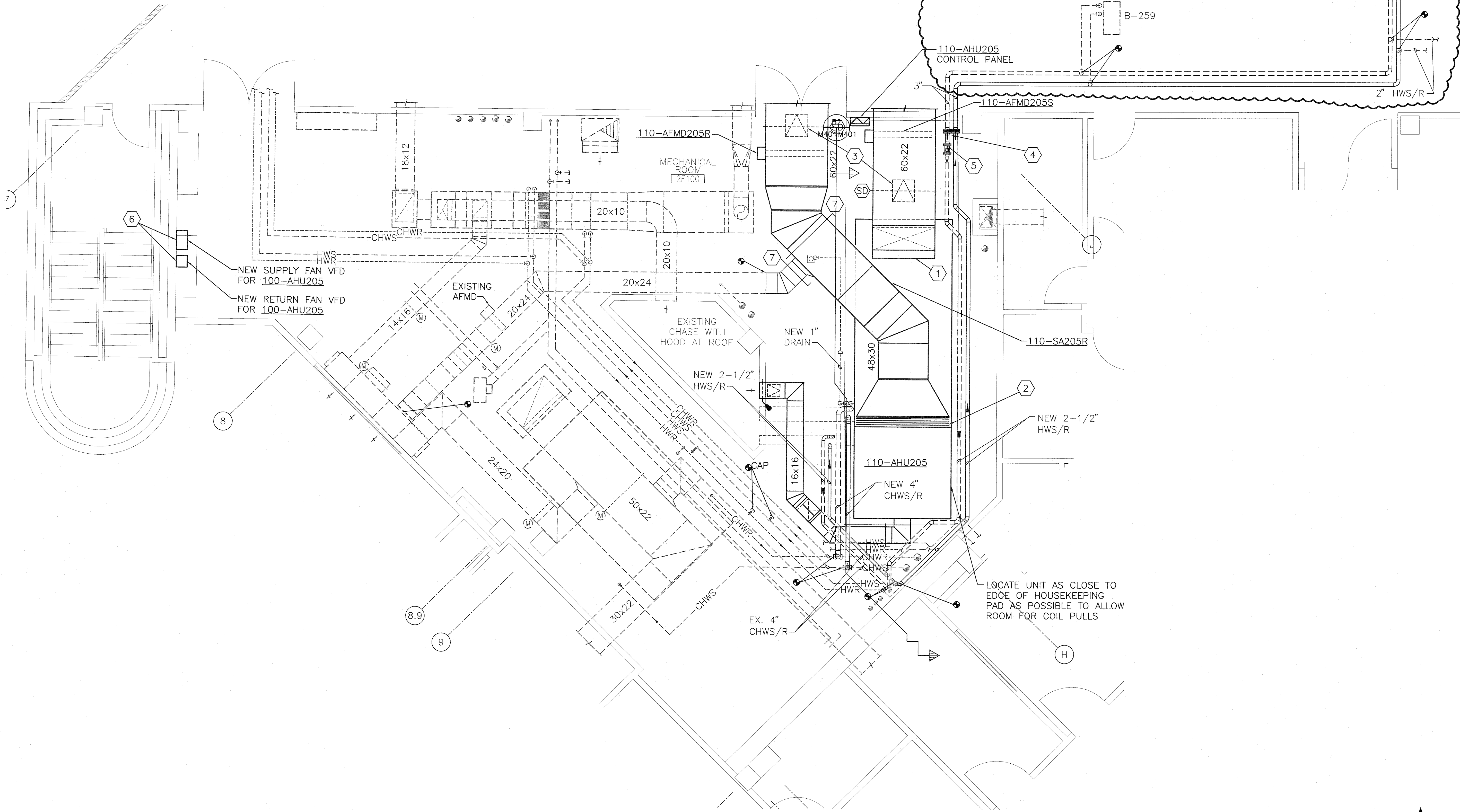
# SYMBOLS LEGEND

- EXISTING WALL, DOOR, WINDOW, MILLWORK, FIXTURE OR OTHER FIXTURE OR ASSEMBLY TO BE REMOVED.
- EXISTING WALL, DOOR, WINDOW, MILLWORK, FIXTURE OR OTHER FIXTURE OR ASSEMBLY TO REMAIN.
- NEW WALL
- SMOKE TIGHT WALL
- 2-HOUR FIRE/ SMOKE RATED WALL
- 1 HOUR FIRE RATED WALL
- 1 HOUR SMOKE BARRIER WALL
- PROJECT LIMITS OF WORK
- NO PIPING OR DUCTWORK SHALL BE ROUTED THROUGH ELECTRICAL AND/OR DATA ROOMS.
- EXISTING CONCRETE COLUMN

# KEY PLAN

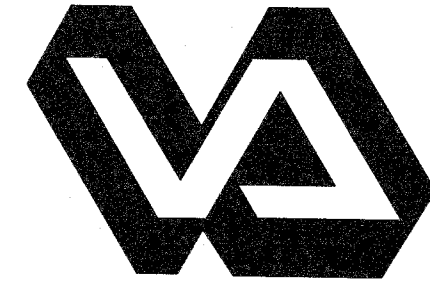


**B2 MECHANICAL SECTION - NEW WORK**  
SCALE: 1/4" = 1'-0"

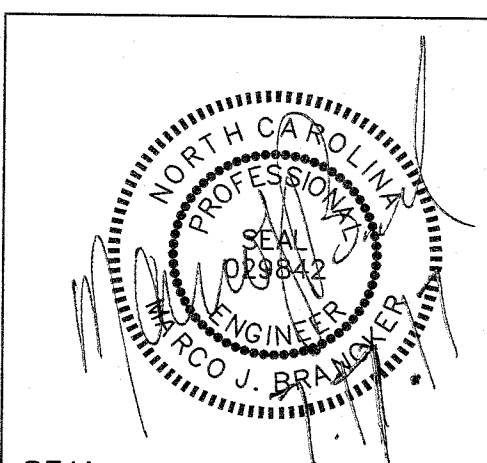


**F3 MECHANICAL ROOM 2E100 PLAN - NEW WORK**  
SCALE: 1/4" = 1'-0"

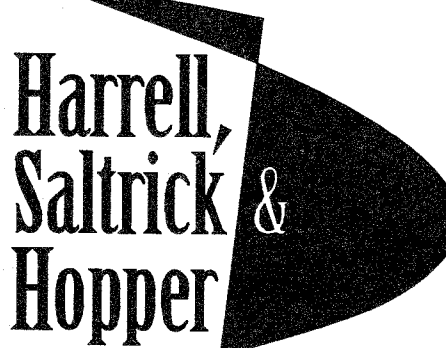
REVISION NO.	REVISION DESCRIPTION	DATE
1	AMENDMENT 02	07/07/17



**Department of Veterans Affairs**  
**Charlie Norwood**  
**VA Medical Center**  
**1 Freedom Way**  
**Augusta, Ga. 30904**



Architect/Engineer Address



**Design & Management Solutions for the Built Environment**  
8016 TOWER POINT DRIVE  
CHARLOTTE, NC 28227  
P 704.814.1320  
F 704.321.0833  
WWW.HSHPC.COM  
COPYRIGHT © 2012 HARRELL, SALTRICK & HOPPER, PC  
HSH PROJECT # 12015

Recommended Approvals:	
1. MEDICAL CENTER DIRECTOR	6. OPERATIONS SERVICE LINE MANAGER
2. ASSISTANT DIRECTOR	7. INFECTION CONTROL MANAGER
3. CHIEF OF STAFF	8. SAFETY MANAGER
4. ASSOC. DIRECTOR	9. GENERAL ENGINEER
5. SERVICE LINE MGRS.	10. COR

Drawing Title	MECHANICAL ROOM 2E100 PLAN - NEW WORK
100% CONSTRUCTION DOCUMENTS	
FULLY SPRINKLERED	

Project Title	RENOVATE MENTAL HEALTH UNITS
Drawn	DWS
Building Number	
AutoCAD File Name	
Checked	
Reviewed	
Const. Contract No.	

Date	February 10, 2017
Project Number	509-12-104
DRAWING No.	M401

