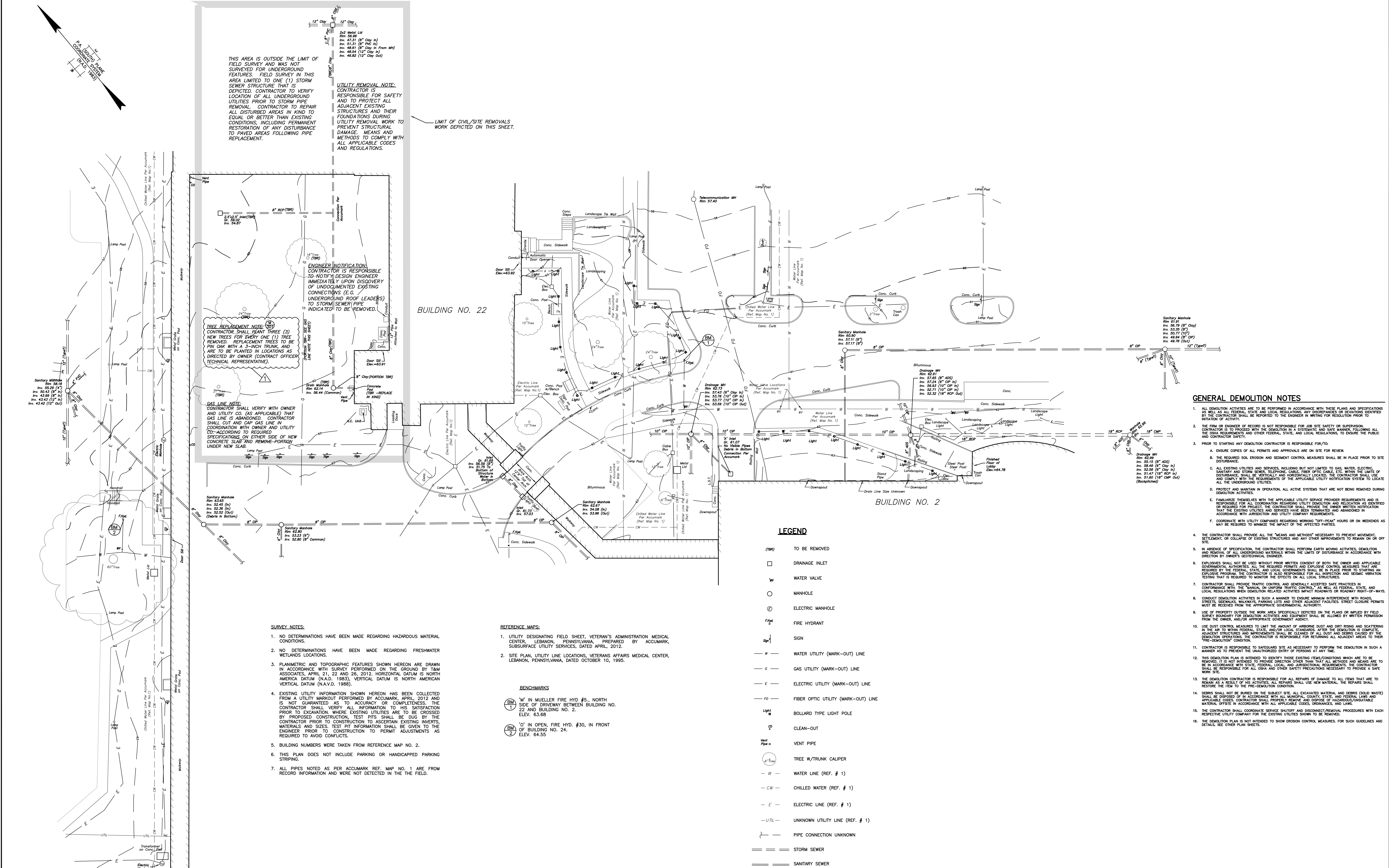


three inches = one foot
one and one half inches = one foot
one inch = one foot
three quarters inch = one foot
one half inch = one foot
three eighths inch = one foot
one quarter inch = one foot
one eighth inch = one foot



GENERAL DEMOLITION NOTES

- ALL DEMOLITION ACTIVITIES ARE TO BE PERFORMED IN ACCORDANCE WITH THESE PLANS AND SPECIFICATIONS AS WELL AS ALL FEDERAL, STATE AND LOCAL REGULATIONS. ANY DISCREPANCIES OR DEVIATIONS IDENTIFIED BY THE CONTRACTOR SHALL BE REPORTED TO THE ENGINEER IN WRITING FOR RESOLUTION PRIOR TO INITIATION OF ACTIVITY.
- THE OWNER OR ENGINEER OF RECORD IS NOT RESPONSIBLE FOR JOB SITE SAFETY OR SUPERVISION. THE CONTRACTOR SHALL BE RESPONSIBLE FOR THE DESIGN AND CONSTRUCTION OF ALL DEMOLITION ACTIVITIES AND SHALL BE RESPONSIBLE FOR THE DESIGN AND CONSTRUCTION OF ALL DEMOLITION ACTIVITIES AND SHALL BE RESPONSIBLE FOR THE DESIGN AND CONSTRUCTION OF ALL DEMOLITION ACTIVITIES.
- PRIOR TO STARTING ANY DEMOLITION CONTRACTOR IS RESPONSIBLE FOR/TO:
 - INSURE COPIES OF ALL PERMITS AND APPROVALS ARE ON SITE FOR REVIEW.
 - THE REQUIRED SOIL EROSION AND SEDIMENT CONTROL MEASURES SHALL BE IN PLACE PRIOR TO SITE DISTURBANCE.
 - ALL EXISTING UTILITIES AND SERVICES, INCLUDING BUT NOT LIMITED TO GAS, WATER, ELECTRIC, SANITARY AND STORM SEWER, TELEPHONE, CABLE, FIBER OPTIC CABLE, ETC. WITHIN THE LIMITS OF DISTURBANCE, SHALL BE VERIFIED AND HORIZONTALLY LOCATED. THE CONTRACTOR SHALL USE AND COMPLY WITH THE REQUIREMENTS OF THE APPLICABLE UTILITY NOTIFICATION SYSTEM TO LOCATE ALL THE UNDERGROUND UTILITIES.
 - PROTECT AND MAINTAIN IN OPERATION, ALL ACTIVE SYSTEMS THAT ARE NOT BEING REMOVED DURING DEMOLITION ACTIVITIES.
 - FAMILIARIZE THEMSELVES WITH THE APPLICABLE UTILITY SERVICE PROVIDER REQUIREMENTS AND IS RESPONSIBLE FOR ALL COORDINATION REGARDING UTILITY DEMOLITION AND RELOCATION AS DEMAND OR REQUIRED FOR PROJECT. THE CONTRACTOR SHALL PROVIDE THE OWNER WRITTEN NOTIFICATION THAT THE EXISTING UTILITIES AND SERVICES HAVE BEEN IDENTIFIED AND ABANDONED IN ACCORDANCE WITH JURISDICTION AND UTILITY COMPANY REQUIREMENTS.
 - COORDINATE WITH UTILITY COMPANIES REGARDING WORKING "TOP-FRONT" HOURS OR ON WEDNESDAYS MAY BE REQUIRED TO MINIMIZE THE IMPACT OF THE AFFECTED PARTIES.
- THE CONTRACTOR SHALL PROVIDE ALL THE "MEANS AND METHOD" NECESSARY TO PREVENT MOVEMENT, SETTLEMENT, OR COLLAPSE OF EXISTING STRUCTURES AND ANY OTHER IMPROVEMENTS TO REMAIN ON OR OFF SITE.
- IN ABSENCE OF SPECIFICATION, THE CONTRACTOR SHALL PERFORM EARTH MOVING ACTIVITIES, DEMOLITION AND REMOVAL OF ALL UNDERGROUND MATERIALS WITHIN THE LIMITS OF DISTURBANCE IN ACCORDANCE WITH DIRECTION BY OWNER'S GEOTECHNICAL ENGINEER.
- EXPLOSIVES SHALL NOT BE USED WITHOUT PRIOR WRITTEN CONSENT OF BOTH THE OWNER AND APPLICABLE GOVERNMENTAL AUTHORITIES. ALL THE REQUIRED PERMITS AND EXPLOSIVE CONTROL MEASURES THAT ARE REQUIRED BY THE FEDERAL, STATE, AND LOCAL GOVERNMENTS SHALL BE IN PLACE PRIOR TO STARTING AN EXPLOSIVE DEMOLITION. THE CONTRACTOR IS ALSO RESPONSIBLE FOR ALL INSPECTION AND DEMOLITION TESTING THAT IS REQUIRED TO MONITOR THE EFFECTS ON ALL LOCAL STRUCTURES.
- CONTRACTOR SHALL PROVIDE TRAFFIC CONTROL AND GENERALLY ACCEPTED SAFE PRACTICES IN CONFORMANCE WITH THE "MANUAL ON UNIFORM TRAFFIC CONTROL" AS WELL AS FEDERAL, STATE, AND LOCAL REGULATIONS WHEN DEMOLITION RELATED ACTIVITIES IMPACT ADJACENT OR ROADWAY RIGHT-OF-WAYS.
- USE OF PROPERTY OUTSIDE THE WORK AREA SPECIFICALLY DEPICTED ON THE PLANS OR IMPLIED BY FIELD SURVEY BOUNDARY FOR DEMOLITION ACTIVITIES AND EQUIPMENT SHALL BE ALLOWED BY WRITTEN PERMISSION FROM THE OWNER, AND/OR APPROPRIATE GOVERNMENT AGENCY.
- USE DUST CONTROL MEASURES TO LIMIT THE AMOUNT OF AIRBORNE DUST AND DIRT RISING AND SCATTERING IN THE AIR TO WITHIN FEDERAL, STATE, AND/OR LOCAL STANDARDS. AFTER THE DEMOLITION IS COMPLETE, ADJACENT STRUCTURES AND IMPROVEMENTS SHALL BE CLEANED OF ALL DUST AND DEBRIS CAUSED BY THE DEMOLITION OPERATIONS. THE CONTRACTOR IS RESPONSIBLE FOR RETURNING ALL ADJACENT AREAS TO THEIR PRE-DEMOLITION CONDITION.
- CONTRACTOR IS RESPONSIBLE TO SAFEGUARD SITE AS NECESSARY TO PERFORM THE DEMOLITION IN SUCH A MANNER AS TO PREVENT THE UNAUTHORIZED ENTRY OF PERSONS AT ANY TIME.
- THIS DEMOLITION PLAN IS INTENDED TO IDENTIFY THOSE EXISTING ITEMS/CONDITIONS WHICH ARE TO BE REMOVED. IT IS NOT INTENDED TO PROVIDE DIRECTION OTHER THAN THAT ALL METHODS AND MEANS ARE TO BE AS ACCORDANCE WITH ALL APPLICABLE LOCAL AND FEDERAL REGULATIONS. THE CONTRACTOR SHALL BE RESPONSIBLE FOR ALL OSHA AND OTHER SAFETY PRECAUTIONS NECESSARY TO PROVIDE A SAFE WORK SITE.
- THE DEMOLITION CONTRACTOR IS RESPONSIBLE FOR ALL REPAIRS OF DAMAGE TO ALL ITEMS THAT ARE TO REMAIN AS A RESULT OF HIS ACTIVITIES. ALL REPAIRS SHALL USE NEW MATERIAL. THE REPAIRS SHALL RESTORE THE ITEM TO THE PRE-DEMOLITION CONDITION.
- DEBRIS SHALL NOT BE BURIED ON THE SUBJECT SITE. ALL EXCAVATED MATERIAL AND DEBRIS (SOLID WASTE) SHALL BE DEPOSITED IN ACCORDANCE WITH ALL MUNICIPAL, COUNTY, STATE, AND FEDERAL LAWS AND APPLICABLE CODES. CONTRACTOR SHALL PROPERLY REMOVE AND DISPOSE OF HAZARDOUS/UNSATURABLE MATERIALS IN ACCORDANCE WITH ALL APPLICABLE CODES, ORDINANCES, AND LAWS.
- THE CONTRACTOR SHALL COORDINATE SERVICE SHUTOFF AND DISCONNECT/REMOVAL PROCEDURES WITH EACH RESPECTIVE UTILITY COMPANY FOR THE EXISTING UTILITIES SHOWN TO BE REMOVED.
- THE DEMOLITION PLAN IS NOT INTENDED TO SHOW EROSION CONTROL MEASURES. FOR SUCH GUIDELINES AND DETAILS, SEE OTHER PLAN SHEETS.

LEGEND

- (TBR) TO BE REMOVED
- DRAINAGE INLET
- W WATER VALVE
- MANHOLE
- ⊙ ELECTRIC MANHOLE
- Fire Hydrant FIRE HYDRANT
- Sign SIGN
- W WATER UTILITY (MARK-OUT) LINE
- G GAS UTILITY (MARK-OUT) LINE
- E ELECTRIC UTILITY (MARK-OUT) LINE
- FO FIBER OPTIC UTILITY (MARK-OUT) LINE
- Light BOLLARD TYPE LIGHT POLE
- CLEAN-OUT
- VENT PIPE
- Tree W/TRUNK CALIPER
- W WATER LINE (REF. # 1)
- CW CHILLED WATER (REF. # 1)
- E ELECTRIC LINE (REF. # 1)
- UTL UNKNOWN UTILITY LINE (REF. # 1)
- PIPE CONNECTION UNKNOWN
- STORM SEWER
- SANITARY SEWER

SURVEY NOTES:

- NO DETERMINATIONS HAVE BEEN MADE REGARDING HAZARDOUS MATERIAL CONDITIONS.
- NO DETERMINATIONS HAVE BEEN MADE REGARDING FRESHWATER WETLANDS LOCATIONS.
- PLANIMETRIC AND TOPOGRAPHIC FEATURES SHOWN HEREON ARE DRAWN IN ACCORDANCE WITH SURVEY PERFORMED ON THE GROUND BY T&M ASSOCIATES, APRIL 21, 22 AND 26, 2012. HORIZONTAL DATUM IS NORTH AMERICAN DATUM (N.A.D. 1983). VERTICAL DATUM IS NORTH AMERICAN VERTICAL DATUM (N.A.V.D. 1988).
- EXISTING UTILITY INFORMATION SHOWN HEREON HAS BEEN COLLECTED FROM A UTILITY MARKOUT PERFORMED BY ACCUMARK, APRIL, 2012 AND IS NOT GUARANTEED AS TO ACCURACY OR COMPLETENESS. THE CONTRACTOR SHALL VERIFY ALL INFORMATION TO HIS SATISFACTION PRIOR TO EXCAVATION WHERE EXISTING UTILITIES ARE TO BE CROSSED BY PROPOSED CONSTRUCTION. TEST PITS SHALL BE DUG BY THE CONTRACTOR PRIOR TO CONSTRUCTION TO ASCERTAIN EXISTING INVERTS, MATERIALS AND SIZES. TEST PIT INFORMATION SHALL BE GIVEN TO THE ENGINEER PRIOR TO CONSTRUCTION TO PERMIT ADJUSTMENTS AS REQUIRED TO AVOID CONFLICTS.
- BUILDING NUMBERS WERE TAKEN FROM REFERENCE MAP NO. 2.
- THIS PLAN DOES NOT INCLUDE PARKING OR HANDICAPPED PARKING STRIPING.
- ALL PIPES NOTED AS PER ACCUMARK REF. MAP NO. 1 ARE FROM RECORD INFORMATION AND WERE NOT DETECTED IN THE FIELD.

REFERENCE MAPS:

- UTILITY DESIGNATING FIELD SHEET, VETERAN'S ADMINISTRATION MEDICAL CENTER, LEBANON, PENNSYLVANIA, PREPARED BY ACCUMARK, SUBSURFACE UTILITY SERVICES, DATED APRIL, 2012.
- SITE PLAN, UTILITY LINE LOCATIONS, VETERANS AFFAIRS MEDICAL CENTER, LEBANON, PENNSYLVANIA, DATED OCTOBER 10, 1995.

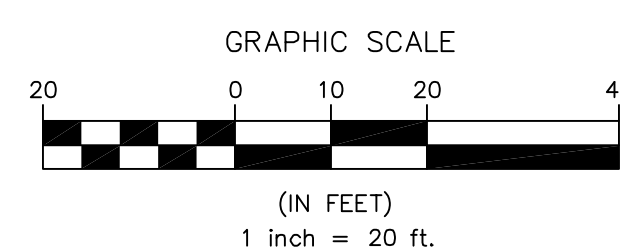
BENCHMARKS

- BM 1 "M" IN MUELLER FIRE HYD #5, NORTH SIDE OF DRIVEWAY BETWEEN BUILDING NO. 22 AND BUILDING NO. 2, ELEV. 63.68
- BM 2 "O" IN OPEN, FIRE HYD. #30, IN FRONT OF BUILDING NO. 24, ELEV. 64.55

CONSULTANTS:



T&M ASSOCIATES
525 PLYMOUTH ROAD, SUITE 315
PLYMOUTH MEETING, PA 19462
TEL: 484-530-1270
FAX: 484-530-1277



ARCHITECT/ENGINEERS:

Civil:

CHRISTOPHER W. JENSEN, P.E.
T&M ASSOCIATES
PROFESSIONAL ENGINEER
PENNSYLVANIA LICENSE NO. PED76464

SIGNATURE:



Miller-Remick LLC
M.E.P. & Structural Engineering
A Veteran Owned Small Business
1010 KINGS HIGHWAY SOUTH
BUILDING ONE - 1st FLOOR
CHERRY HILL, NEW JERSEY 08034
PHONE: (856)429-4000
FAX: (856)429-5002

Drawing Title

**EXISTING FEATURES AND REMOVALS
PLAN**

Approved Project Director

Project Title

**THERMAL STORAGE
FOR CHILLER PLANT**

Location

VA MED. CENTER, LEBANON, PA

Date

5/15/2012

Checked

Drawn

Project Number

595-11-131

Building Number

N/A

Drawing Number

CS-101

Dwg. 03 of 36

Office of
Construction
and Facilities
Management

