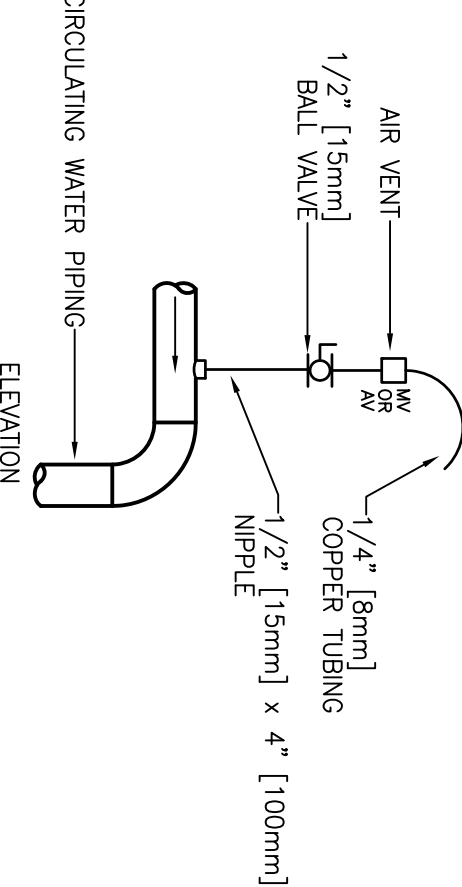


TYPICAL CHILLED AND HOT WATER PIPING DRAIN VALVE CONNECTIONS

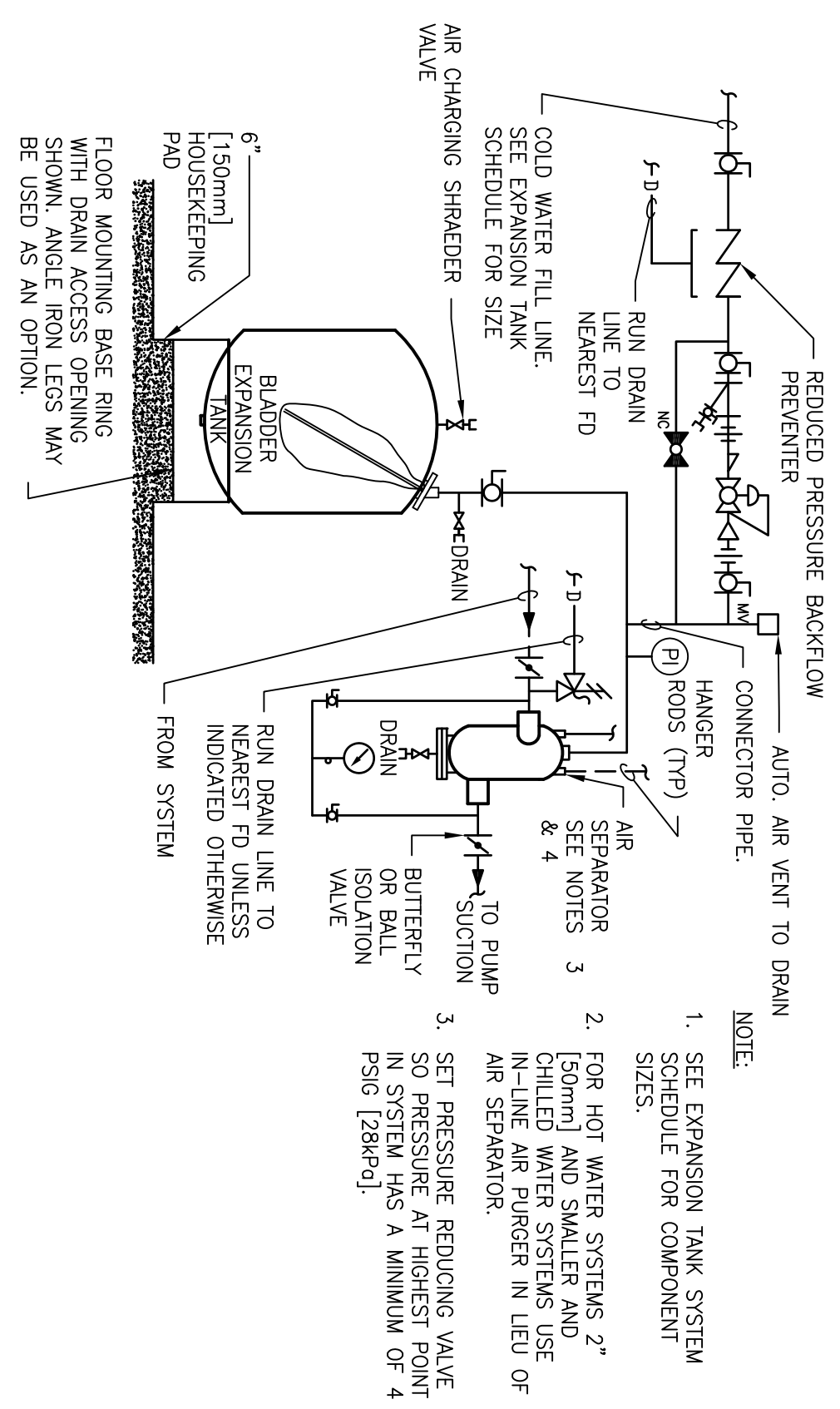
- NOTES:
1. DRAIN ALL LOW POINTS AS INDICATED ABOVE.
 2. WHERE SCALE POCKETS ARE SHOWN ON PIPE RISER DIAGRAMS AND/OR PLANS LOCATE DRAIN AT BOTTOM OF SCALE POCKET.



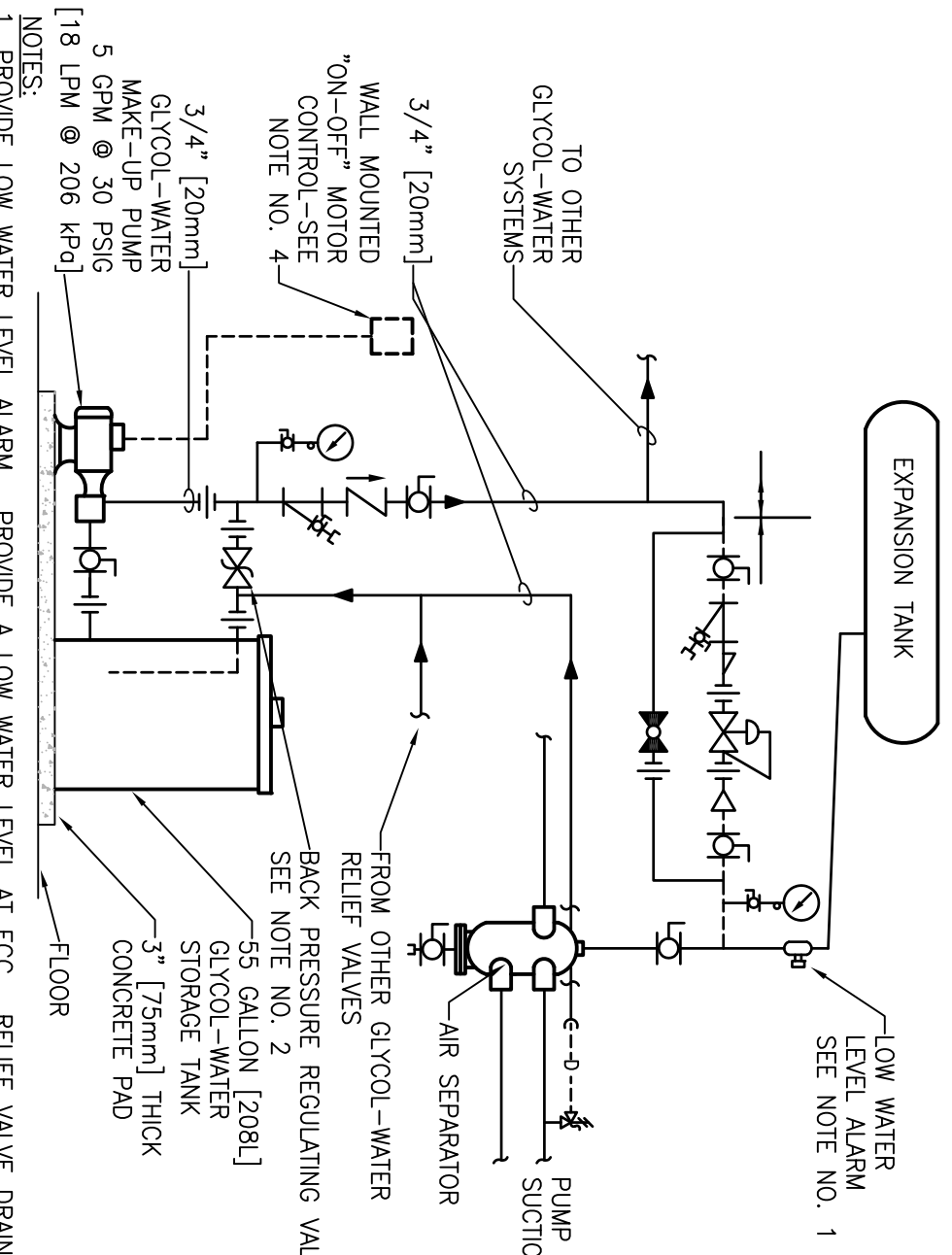
TYPICAL MANUAL AIR VENT

- NOTES:
1. VENT ALL HIGH POINTS INDICATED ABOVE.
 2. IF AUTOMATIC AIR VENTS ARE USED, PIPE DISCHARGE TO DRAIN.

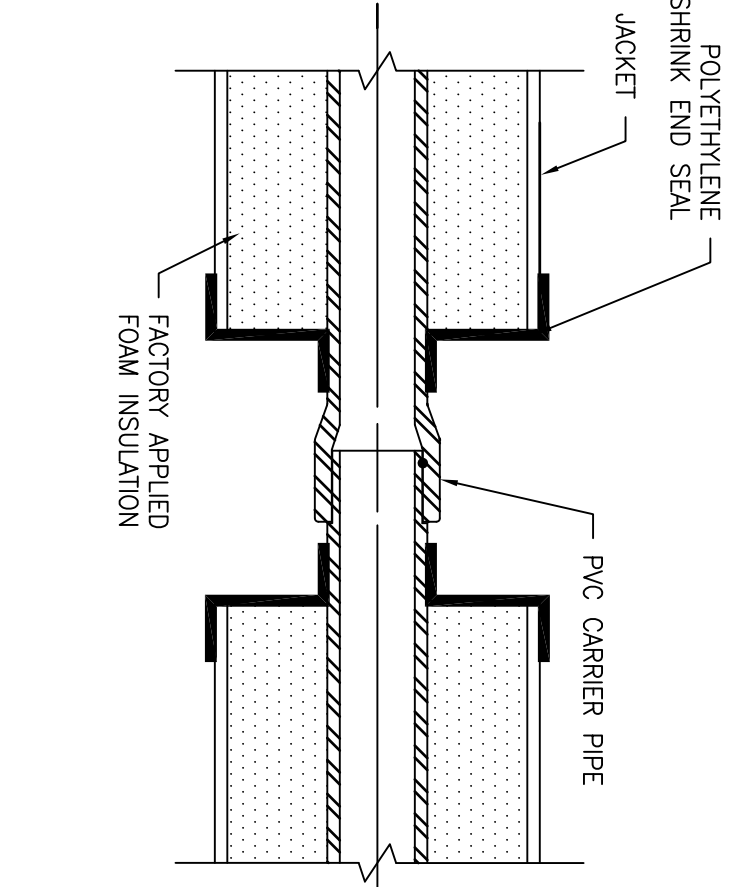
DRAIN VALVE AND AIR VENT CONNECTIONS (HYDRONIC SYSTEMS)



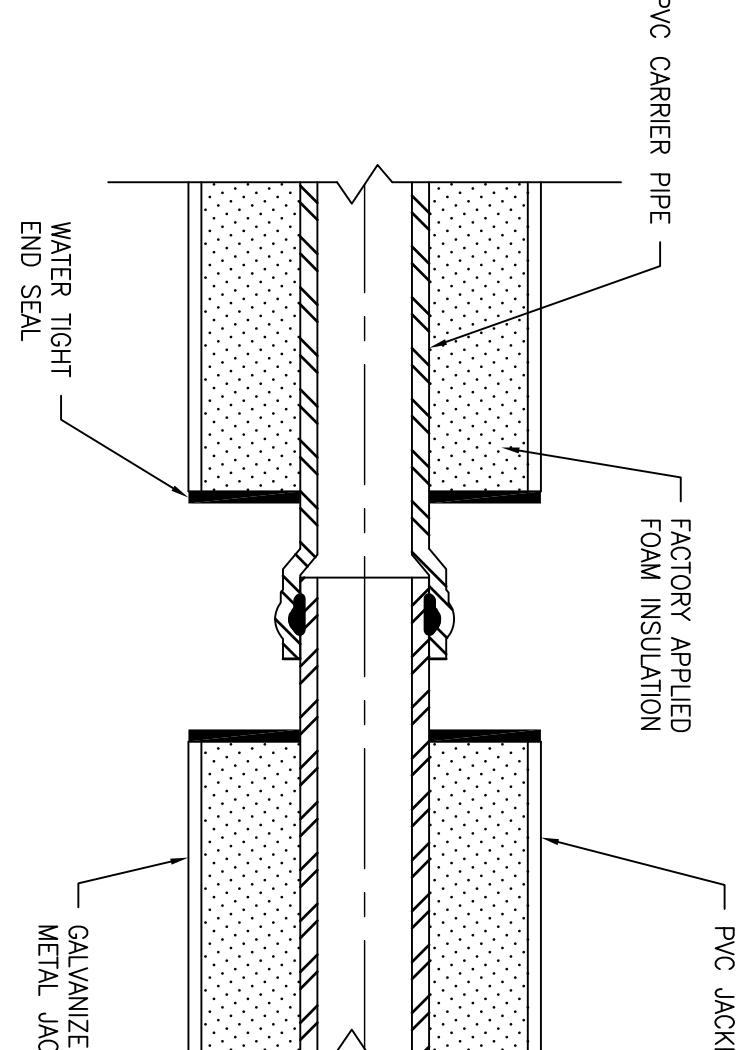
FLOOR MOUNTED EXPANSION TANK - PIPING CONNECTIONS



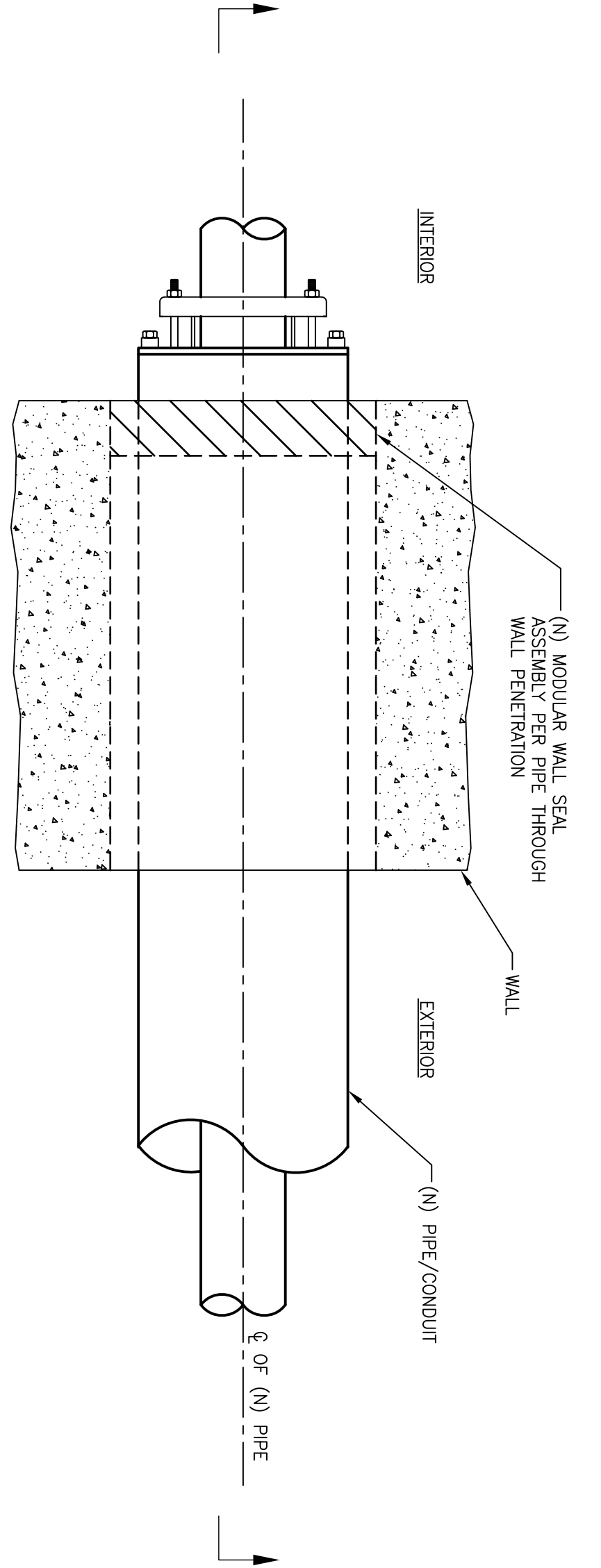
INDIRECT GLYCOL MAKE-UP SYSTEM (PIPING AND CONTROLS)



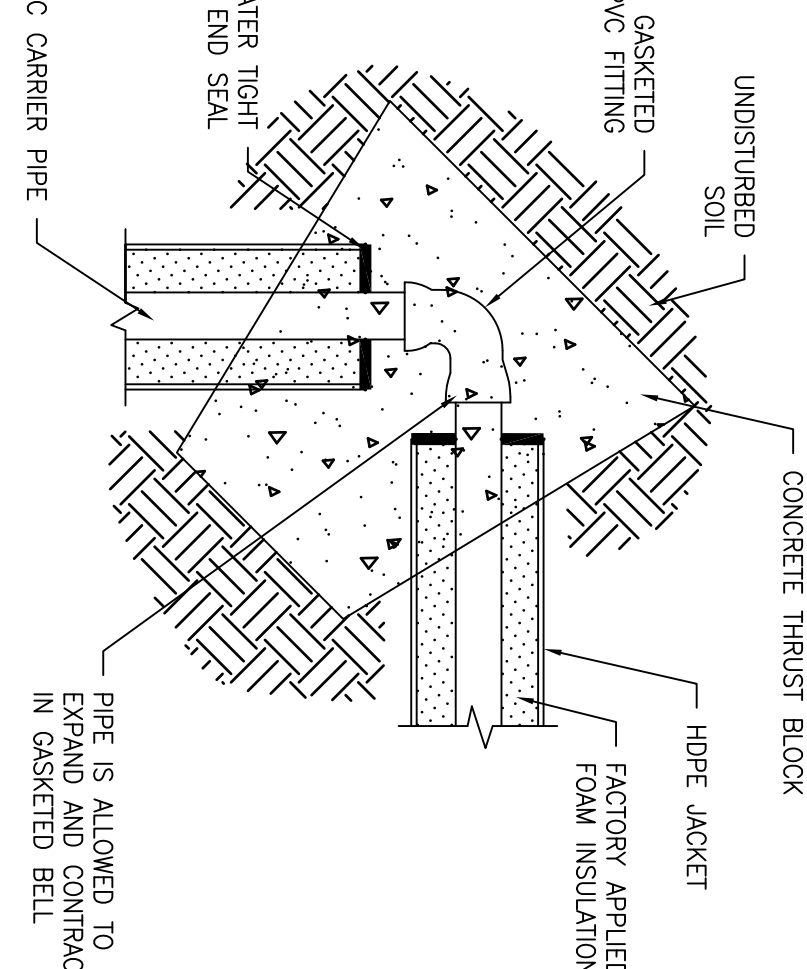
UNINSULATED PVC FIELD JOINT DETAIL W/ SHRINK END SEAL



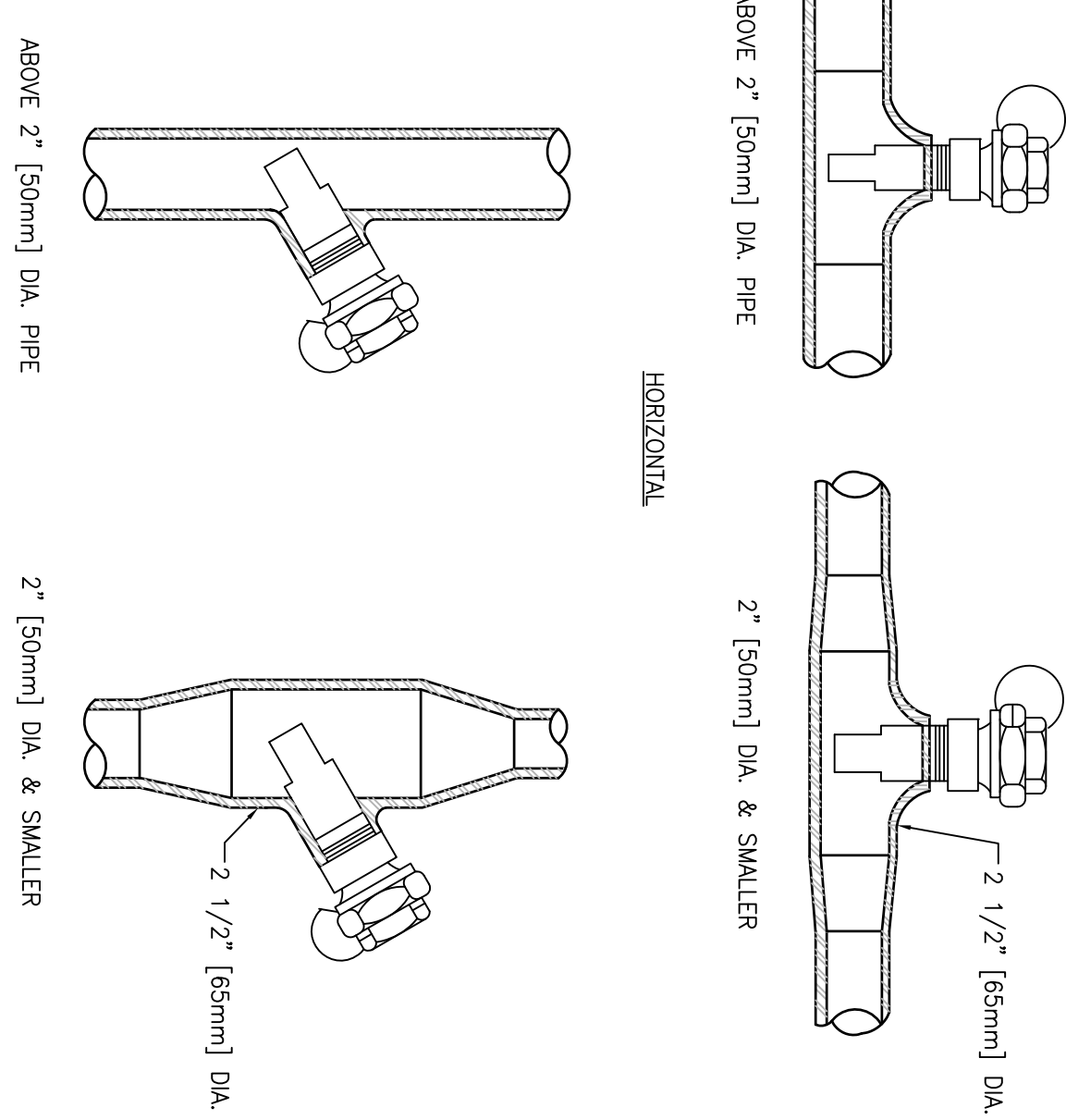
GASKETED PVC/STEEL TRANSITION DETAIL



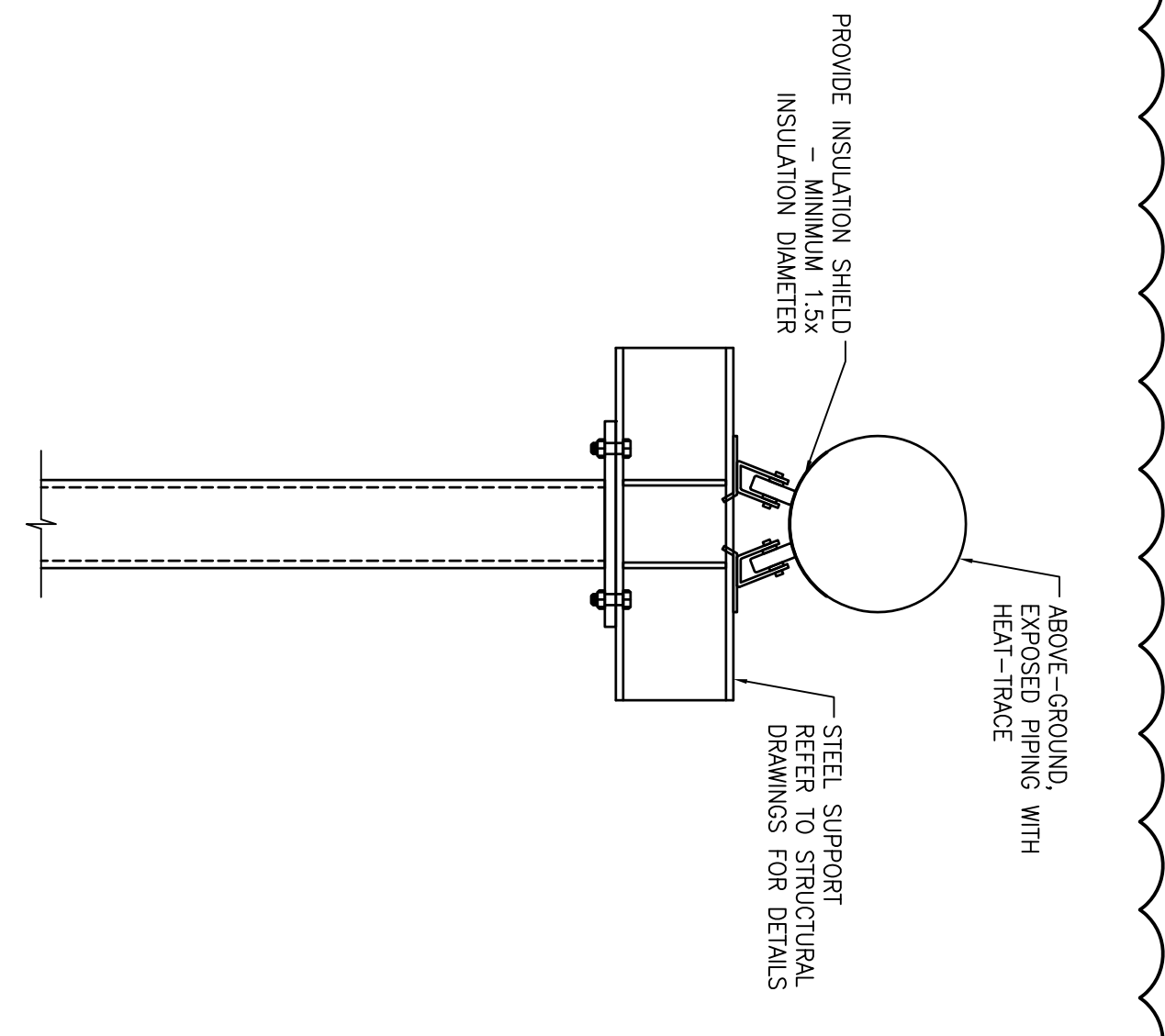
PIPE THROUGH WALL SEAL DETAIL



GASKETED PVC THRUST BLOCK DETAIL



INSTALLATION OF THERMOMETER WELLS



ABOVE-GROUND PIPE SUPPORT DETAIL

CONSTRUCTION DOCUMENTS

CONSULTANTS:				ARCHITECT/ENGINEERS:			
ADDENDUM #1				Miller-Tremick, LLC			
REVISIONS				1010 KINGS HIGHWAY SOUTH			
DATE				BIRMINGHAM, ALABAMA 35204			
PROJECT				VA MED CENTER, LEBANON, PA			
DRAWING NUMBER				MH-501			
DATE				6/11/2012			
PROJECT NUMBER				595-11-131			
BUILDING NUMBER				N/A			
OFFICE OF CONSTRUCTION AND FACILITIES MANAGEMENT				DEPARTMENT OF VETERANS AFFAIRS			