

GENERAL SHEET NOTES:

1. REFER TO DWG E-001 FOR GENERAL NOTES, LEGEND, AND ABBREVIATIONS

2. COMMISSIONING/START UP SHALL ONLY OCCUR DURING WINTER MONTHS

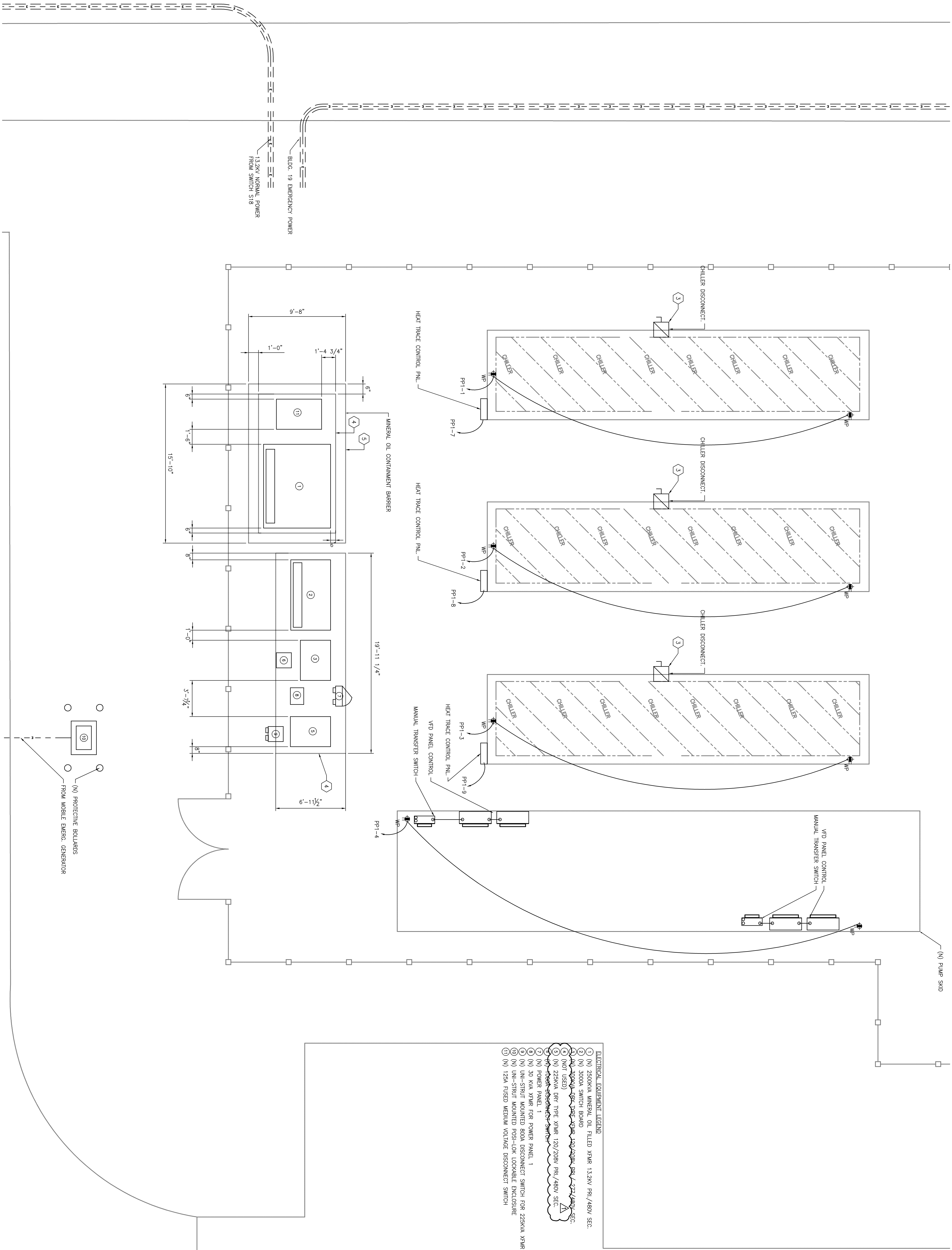
3. ELECTRICAL EQUIPMENT DIMENSIONS ARE TO BE VERIFIED BY THE ELECTRICAL CONTRACTOR. ONLY ELECTRICAL EQUIPMENT MANUFACTURE AND INSTALLATION SHALL BE VERIFIED BY THE ELECTRICAL CONTRACTOR WITH OTHER TRADES BEFORE FINAL INSTALLATION

SHEET KEYNOTES:

- PER VA SPECIFICATION 28-24.4 CONCRETE ENCASED IN CONCRETE SHALL BE BURRED AT A  
A) 24" UNDER FINISHED GRADE  
B) 30" UNDER ROADS AND SIDEWALKS  
C) 48" UNDER SLOPE
- PLASTIC IDENTIFICATION TAPE SHALL BE BURIED AT A MINIMUM OF 1 FOOT ALONG THE ROUTE OF THE CABLE CONDUIT
- SINGLE POINT OF CONNECTION TO CHILLER AT THE DISCONNECT SWITCH
- ALL ELECTRICAL EQUIPMENT SHALL BE ON A HOUSE KEEPING PAD

ELECTRICAL EQUIPMENT LEGEND

- ① (N) 2500VA MINERAL OIL FILLED XFMR 13.2KV PRI/480V SEC.
- ② (N) 3000A SWITCH BOARD
- ③ (N) 1250VA 120/208V PRI/480V SEC.
- ④ (N) 1250VA 120/208V PRI/480V SEC.
- ⑤ (N) 1250VA 120/208V PRI/480V SEC.
- ⑥ (N) 30 KVA XFMR FOR POWER PANEL 1
- ⑦ (N) POWER PANEL 1
- ⑧ (N) 30 KVA XFMR FOR POWER PANEL 1
- ⑨ (N) UNI-STRUT MOUNTED 800A DISCONNECT SWITCH FOR 2250VA XFMR
- ⑩ (N) UNI-STRUT MOUNTED POSI-LOK LOCKABLE ENCLOSURE
- ⑪ (N) 125A FUSED MEDIUM VOLTAGE DISCONNECT SWITCH



1 SITE PLAN FOR UTILITY RECEPTACLES

SCALE: 1/4"=1'-0"

CONSULTANTS:

Mechanical/Electrical/Plumbing/Structure

ARCHITECT/ENGINEERS:

Drawing Title

Project Title

Project Number

Office of Construction and Facilities Management

THOMAS L. SHUPAK, P.E.

PROFESSIONAL ENGINEER

Thermal Storage Area

For Chiller Plant

Building Number

Office of Construction and Facilities Management

PAUL J. DORR, P.E.

PROFESSIONAL ENGINEER

Thermal Storage Area

For Chiller Plant

Building Number

Office of Construction and Facilities Management

Signature

Signature

Approved Project Director

Location

Date

Department of Veterans Affairs

one eighth inch = one foot

one quarter inch = one foot

three eighths inch = one foot

one half inch = one foot

three quarters inch = one foot

one inch = one foot

one and one half inches = one foot

three inches = one foot

VA FORM 08-43231