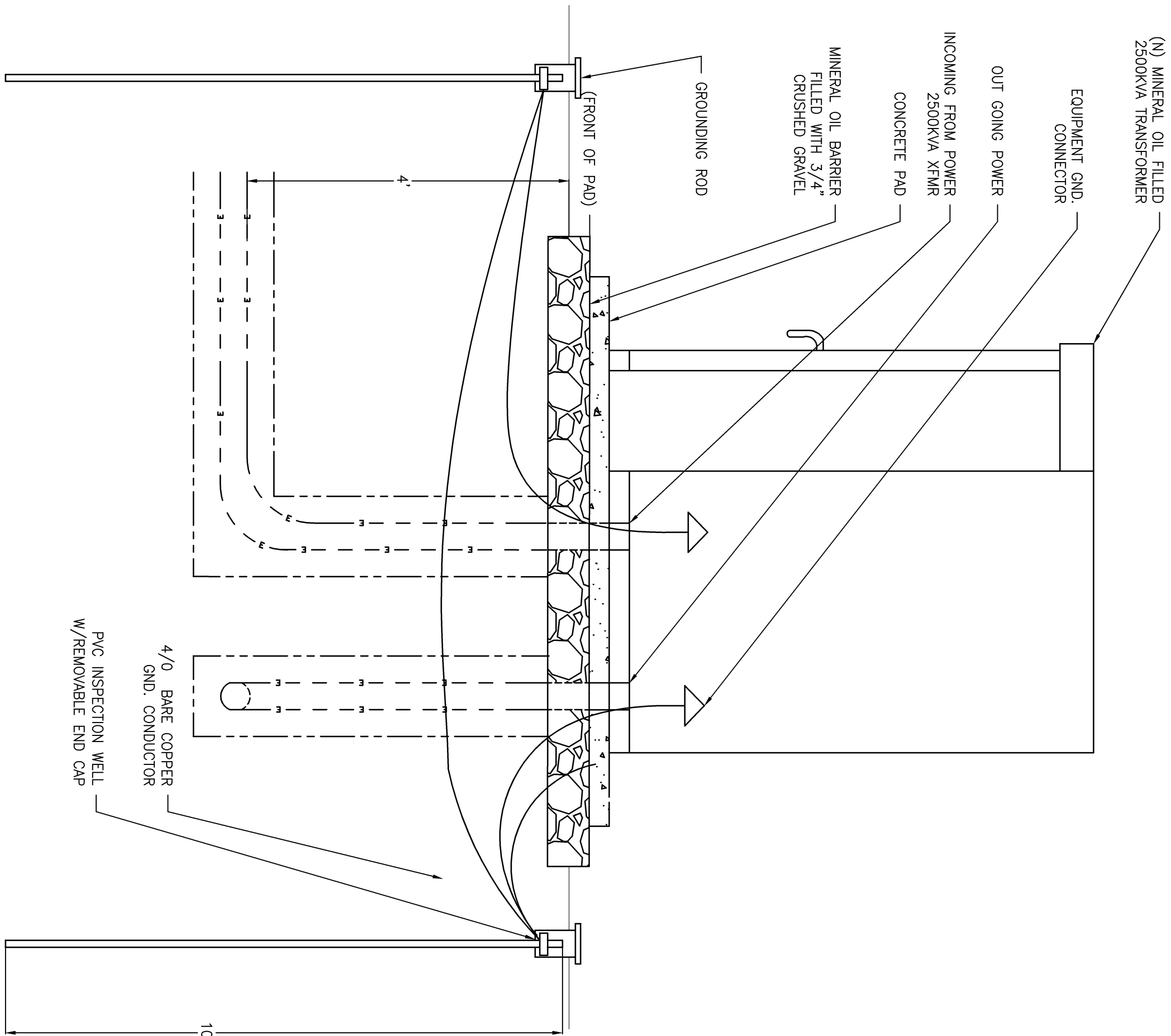
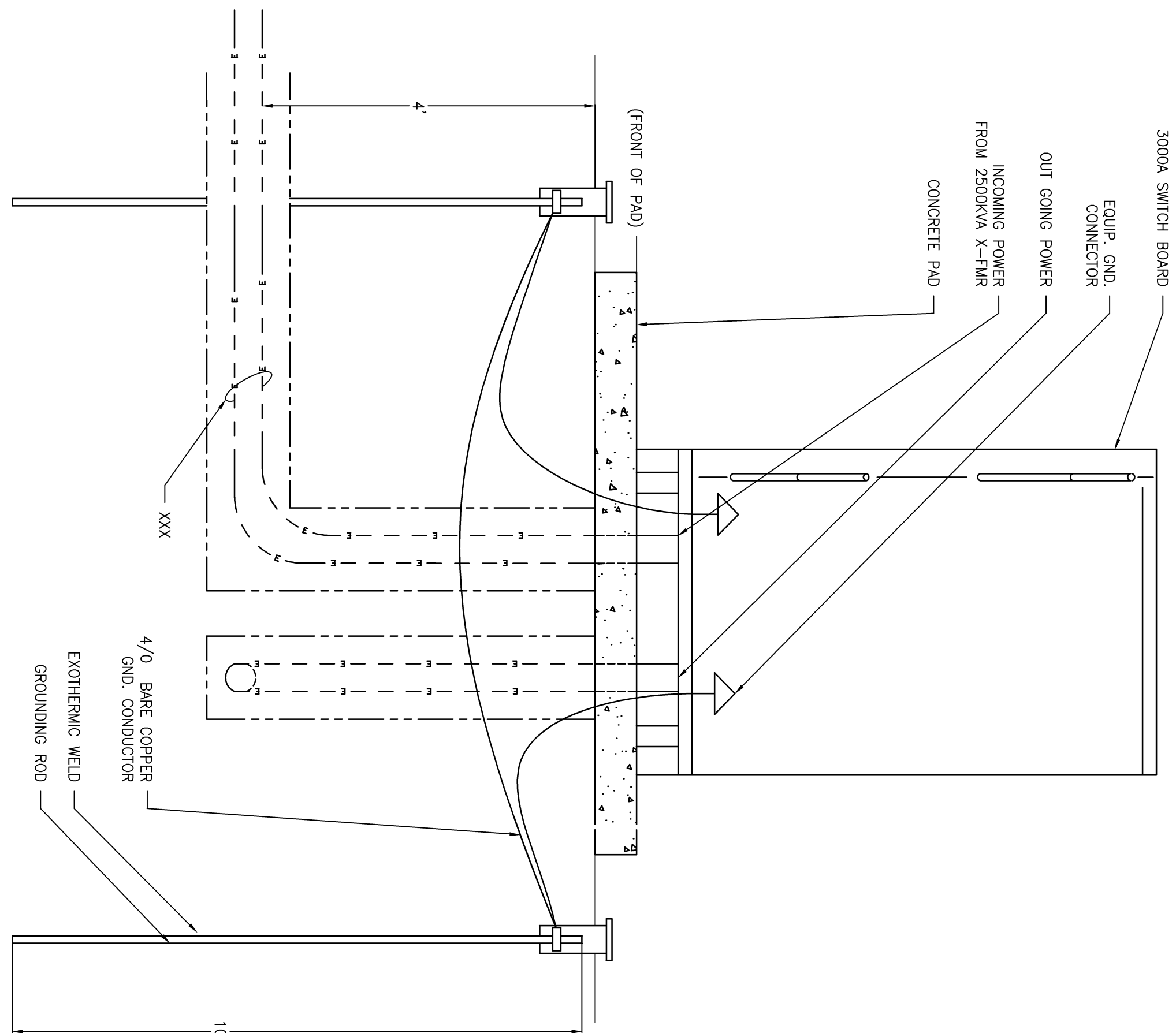


- GENERAL SHEET NOTES:**
1. REFER TO DWG E-001 FOR GENERAL NOTES, SYMBOLS, AND ABBREVIATIONS.
 2. ELECTRICAL EQUIPMENT DIMENSIONS ARE REPRESENTATIVE FOR DRAWING PURPOSES ONLY. ELECTRICAL CONTRACTOR SHALL VERIFY DIMENSIONS AND CORRECT ANY DISCREPANCIES BEFORE FINAL INSTALLATION.
- SHEET KEYNOTES:**
1. EMERGENCY POWER FROM BUILDING 19 GENERATOR
 2. EMERGENCY POWER FROM PORTABLE GENERATOR
 3. NORMAL POWER FROM UTILITY (13.2KV TO 480V XTRMFG)
 4. POWER SMD



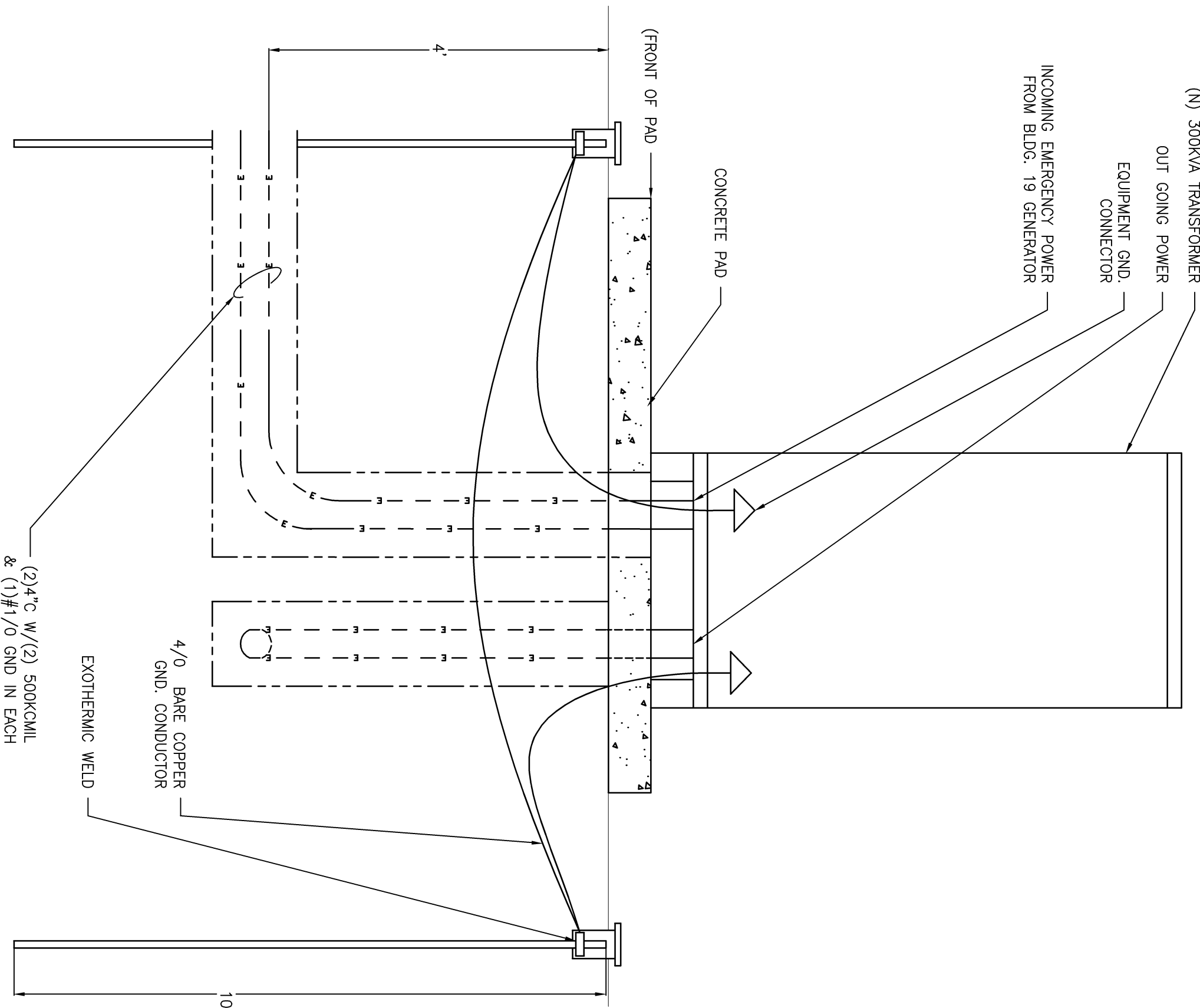
1 2500 KVA MINERAL OIL TRANSFORMER SECTION VIEW

SCALE: 3/4"=1'-0"



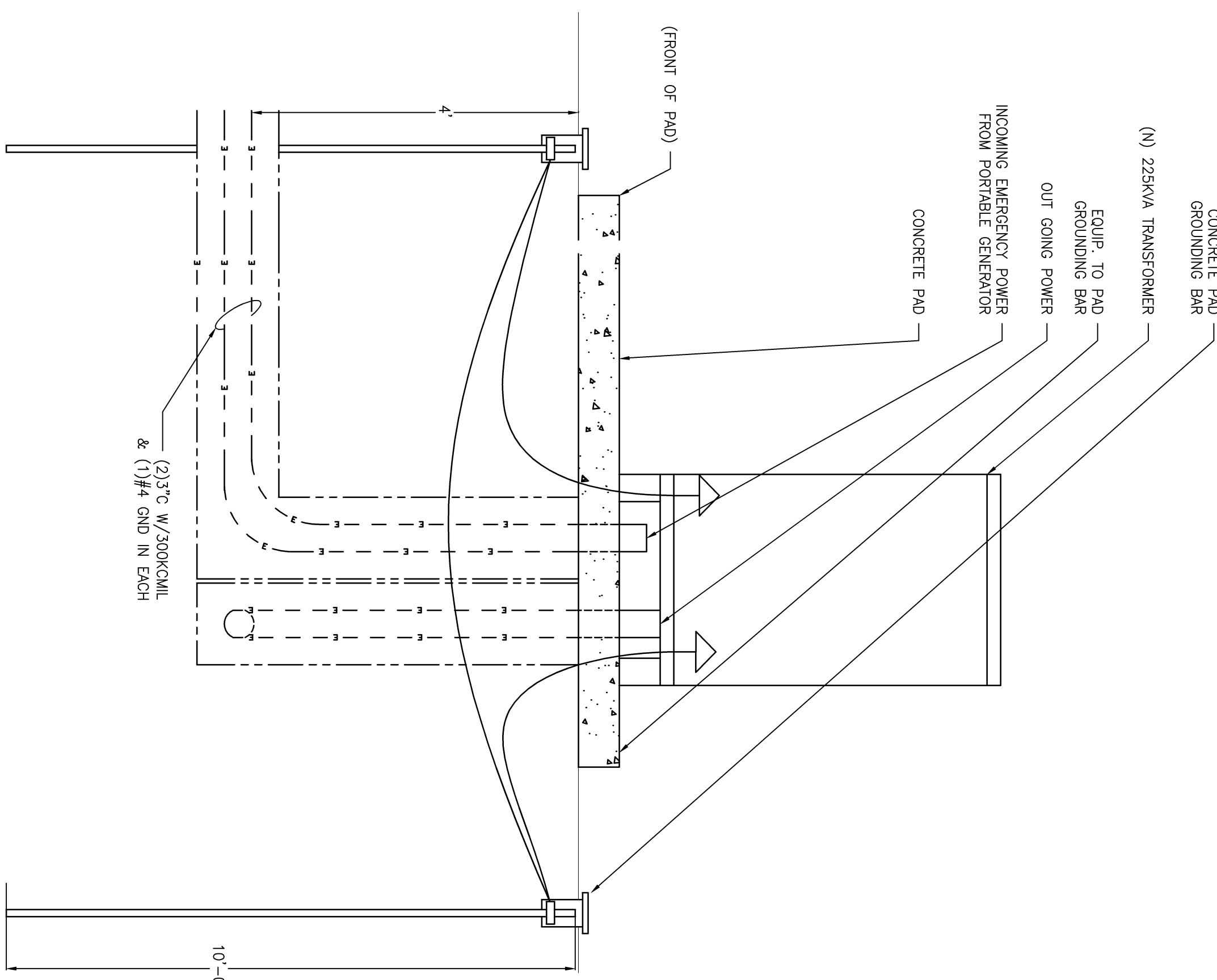
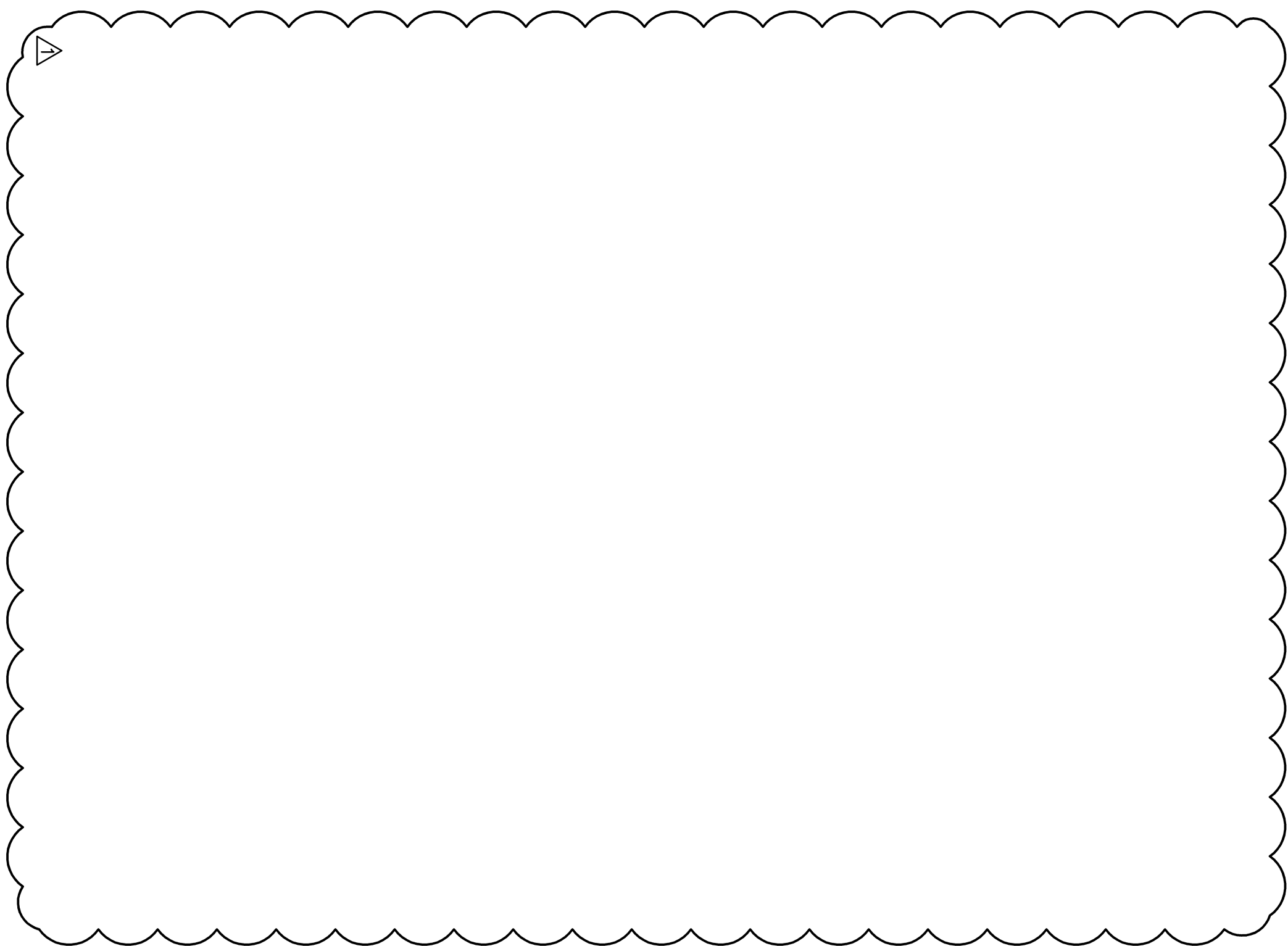
2 3000A SWITCH BOARD

SCALE: 3/4"=1'-0"



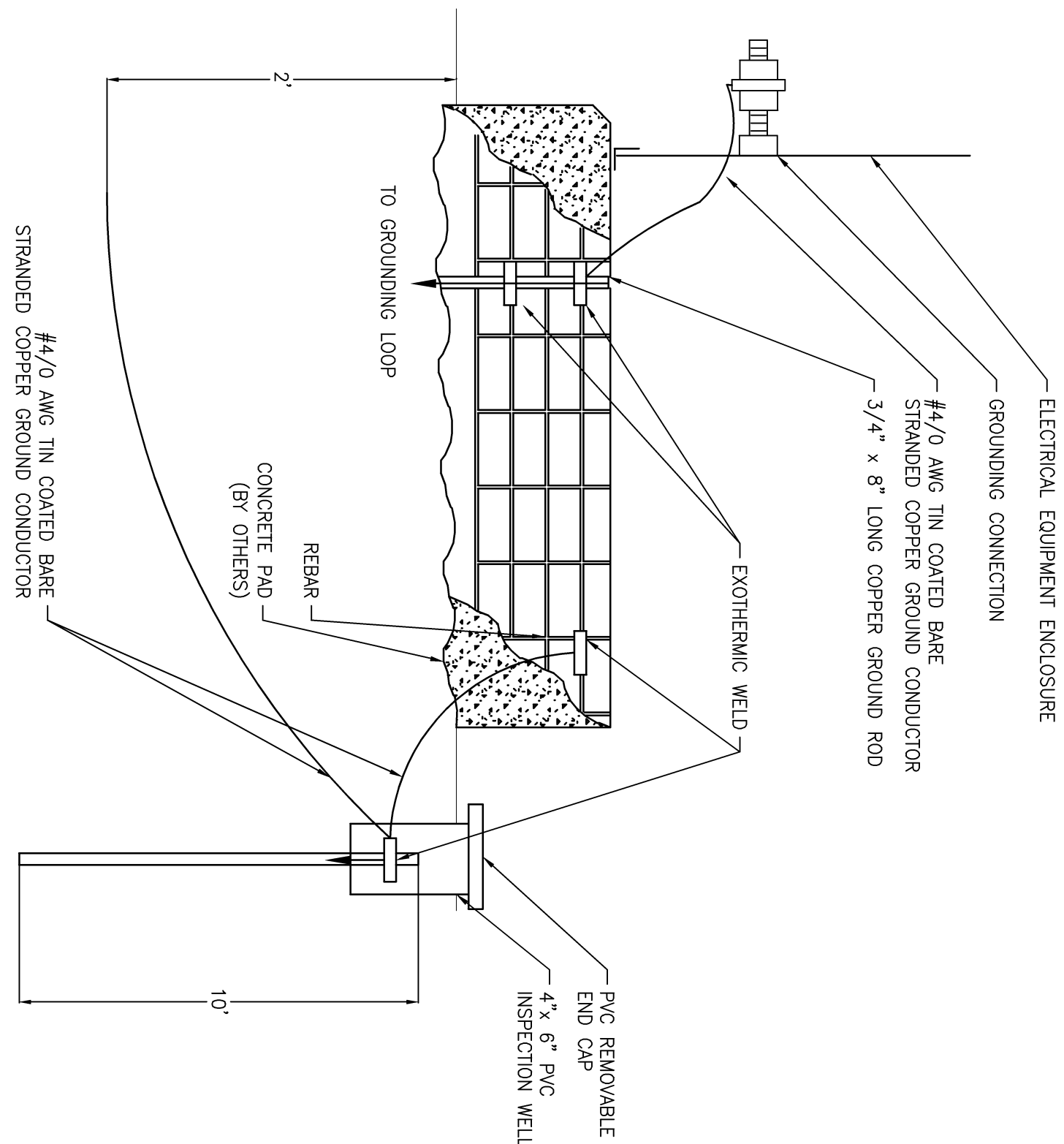
3 300 KVA TRANSFORMER SECTION VIEW

SCALE: 3/4"=1'-0"



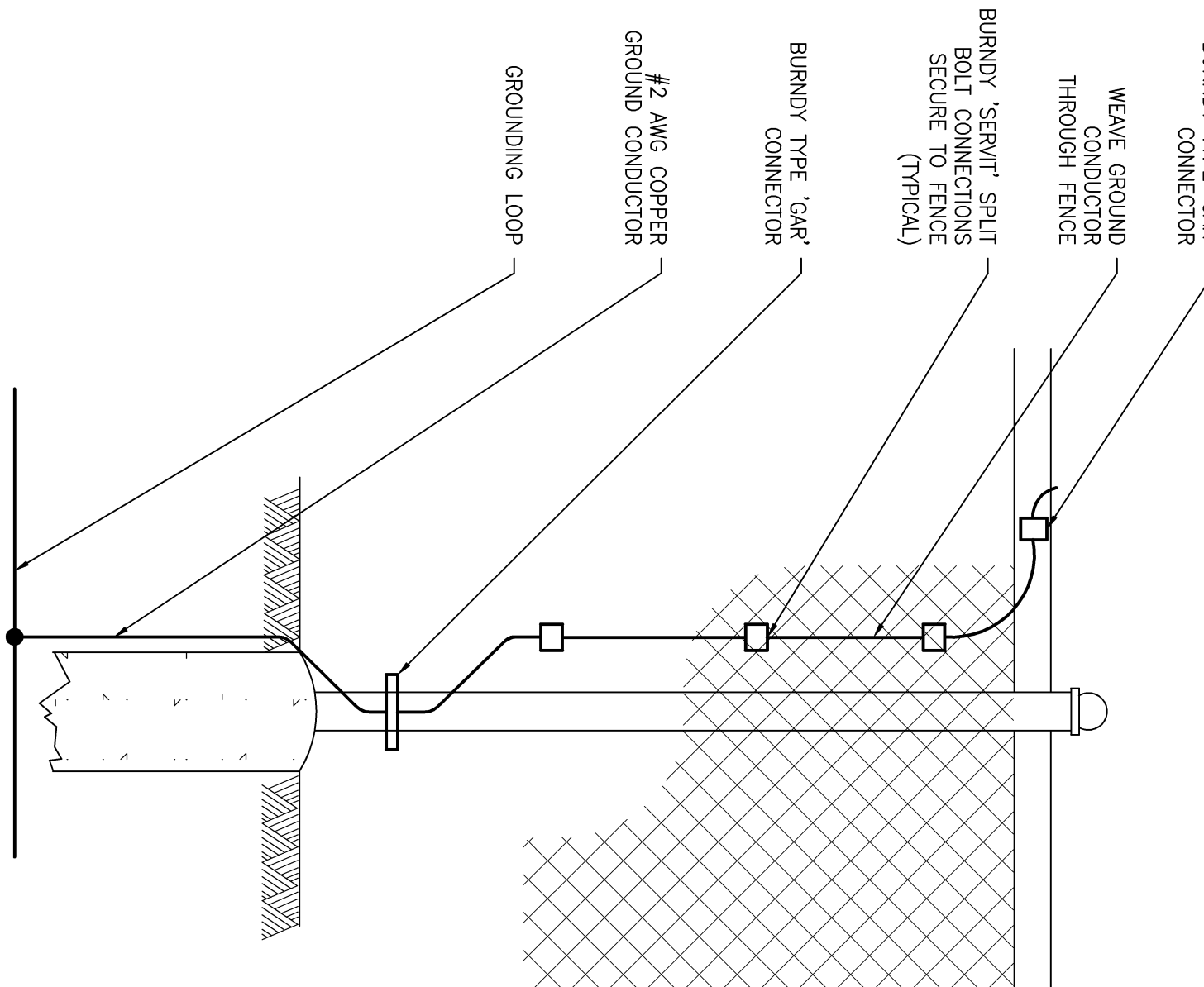
4 225 KVA TRANSFORMER SECTION VIEW

SCALE: 3/4"=1'-0"



5 PAD GROUNDING DETAIL

SCALE: N.T.S.



6 PAD GROUNDING DETAIL

SCALE: N.T.S.

CONSULTANTS:

ARCHITECT/ENGINEERS:

Drawing Title

GROUNDING DETAILS

SCALE: 3/4" = 1'-0"

Approved Project Director

Project Title

THERMAL STORAGE FOR CHILLER PLANT

Project Number

595-11-131

Building Number

N/A

Drawing Number

EP - 502

DWG 30 of 34

Miller-Remick LLC
A Veteran Owned Small Business
1010 KINGS HIGHWAY SOUTH
SUITE 100
PHILADELPHIA, PA 19106
PHONE: (650)429-4000
FAX: (650)429-5002

Office of Construction and Facilities Management
Department of Veterans Affairs

one eighth inch = one foot

0 4 8 16

one quarter inch = one foot

0 4 8

three eighths inch = one foot

0 4

one half inch = one foot

0 4

three quarters inch = one foot

6" 0 2

one inch = one foot

6" 0 2

one and one half inches = one foot

6" 0 1

three inches = one foot

6" 0

VA FORM 08-6231

CONSTRUCTION DOCUMENTS