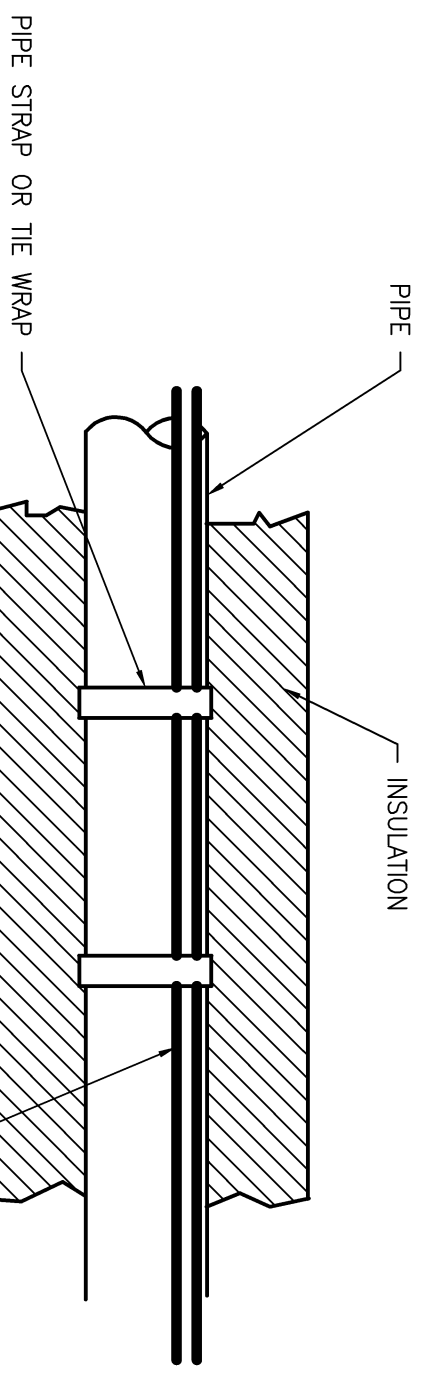
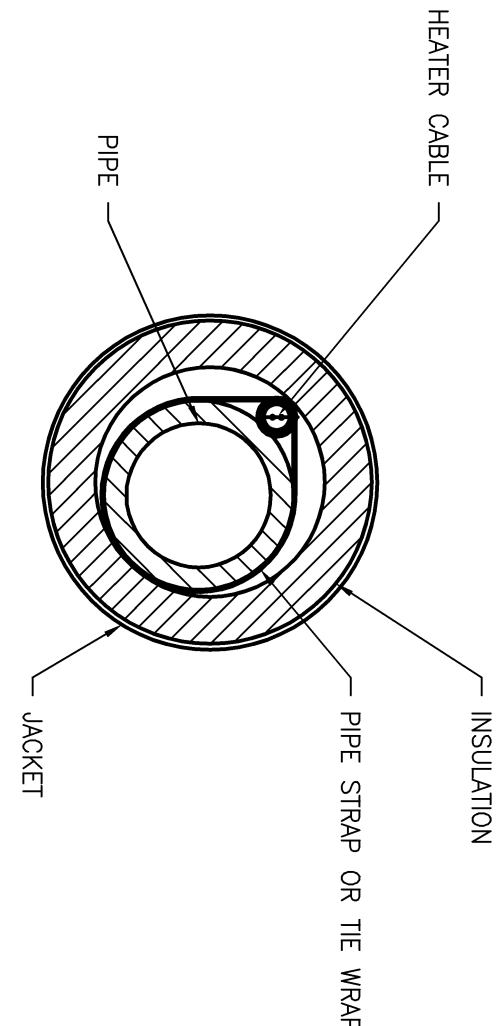


1  
SCALE: N.T.S.

TYPICAL ELBOW HEAT TRACING DETAIL FOR CHILLER PIPING



2  
SCALE: N.T.S.

TYPICAL HEAT TRACING DETAIL FOR CHILLER PIPING

GENERAL SHEET NOTES:

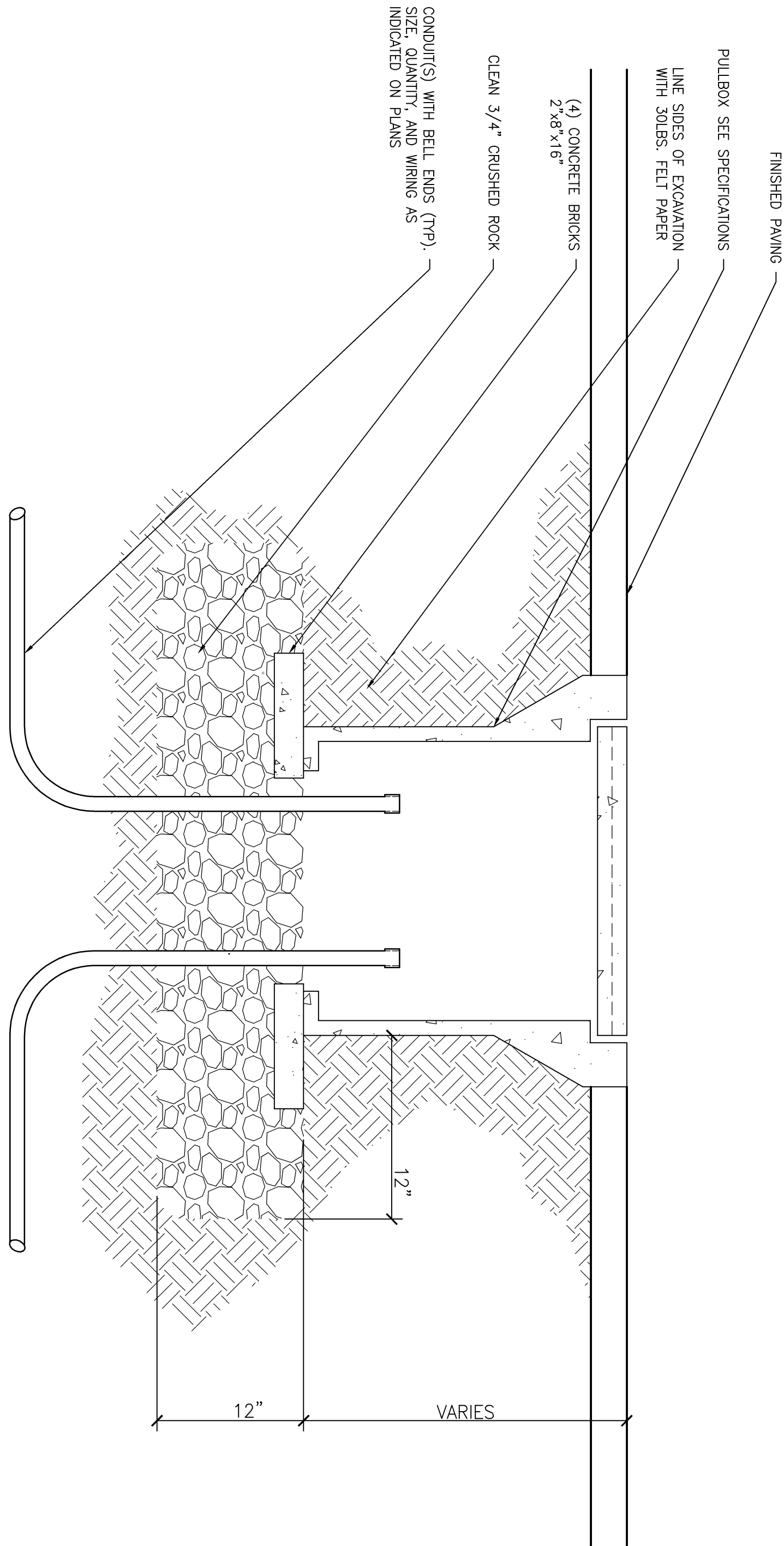
1. REFER TO DWG E-201 FOR GENERAL NOTES, SYMBOLS, AND ABBREVIATIONS.
2. ELECTRICAL EQUIPMENT DIMENSIONS ARE AS SHOWN. ELECTRICAL CONTRACTOR SHALL VERIFY DIMENSIONS WITH ELECTRICAL EQUIPMENT MANUFACTURE AND INSTALLATION.

SHEET KEYNOTES:

1. EMERGENCY POWER FROM BUILDING 19 GENERATOR
2. CLEAN PIPING TO BE HEAT TRACED OF ALL FOREIGN MATTER TO FACILITATE HEAT TRANSFER

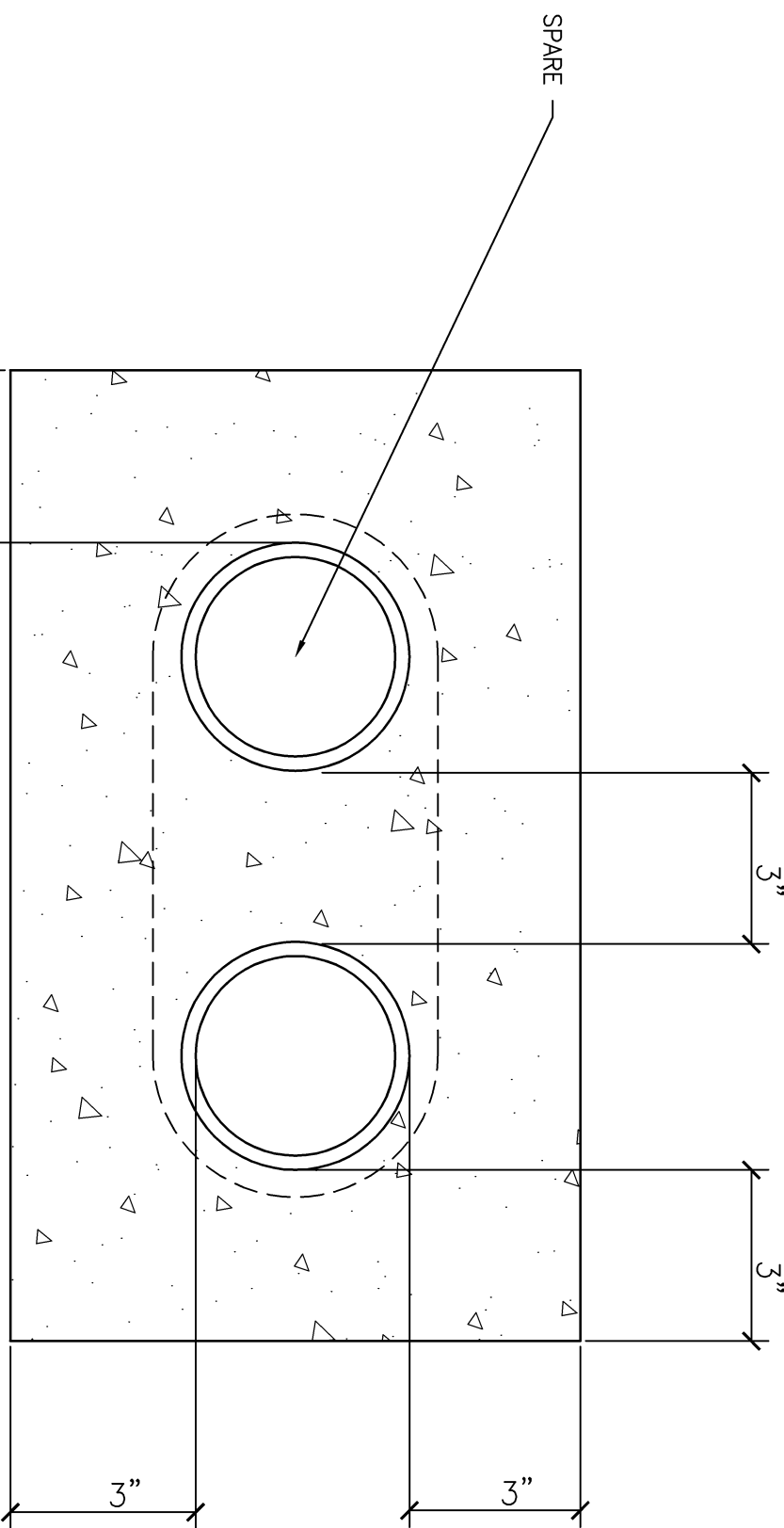
DUCT BANK NOTES

1. CONCRETE SHALL BE 2000 P.S.I., Ø 28 DAYS, OR AS SPECIFIED.
2. PROVIDE REMEDIATING GROUT ON TOP AND BOTTOM OF DUCTS WHEN CROSSING OR PLACED IN ROADWAYS.
3. MINIMUM COVER TO TOP OF ENVELOPE SHALL BE 24" [810mm].
4. PROVIDE MINIMUM 4" [102mm] SPACE BETWEEN POWER AND TELECOMMUNICATION DUCTS. INCREASE SIZE AS REQUIRED.
5. INDUCT QUANTITY AND SIZE AS INDICATED ON PLANS.



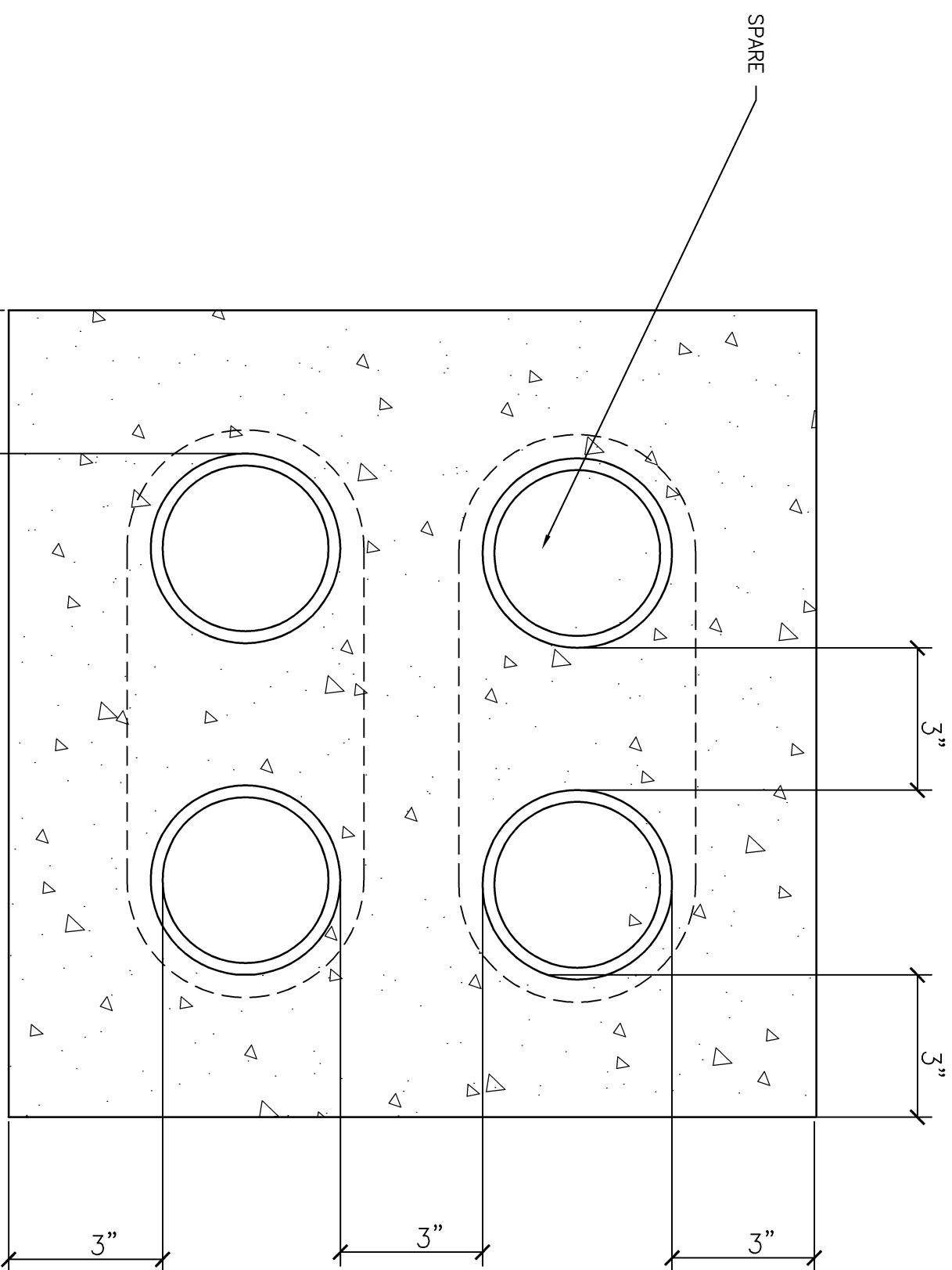
3  
SCALE: N.T.S.

UNDERGROUND PULL BOX DETAIL FOR 13.2KV AND 1200KW GENERATOR CABLES



4  
SCALE: N.T.S.

2 WAY DUCT BANK FOR 13.2KV CABLE



5  
SCALE: N.T.S.

4 WAY DUCT BANK FOR CABLE FROM 1200KW GEN.

CONSTRUCTION DOCUMENTS

CONSULTANTS:		ARCHITECT/ENGINEERS:		Drawing Title		Project Number		Office of Construction and Facilities Management	
		Mechanical/Electrical/Plumbing/Structural		THERMAL STORAGE HEAT TRACE AND UNDERGROUND WORK DETAIL SHEET		595-11-131		Department of Veterans Affairs	
		THOMAS L. CHICKAMER, P.E. Principal Engineer 10010 LINDS HIGHWAY SOUTH CHICKEREE HILL NEW JERSEY 08034 PHONE: (908)229-4200 FAX: (908)229-3205		SCALE: N.T.S.		Building Number N/A			
		SCHEMATIC		Approved Project Director		Drawing Number EP-503			
				Location VA MED CENTER, LEBANON, PA		Date 6/11/2012		Dwg 31 of 34	
APPENDIX #1				Checked SW		Dwg VJA			
DATE									
06-11-12									
P01010									