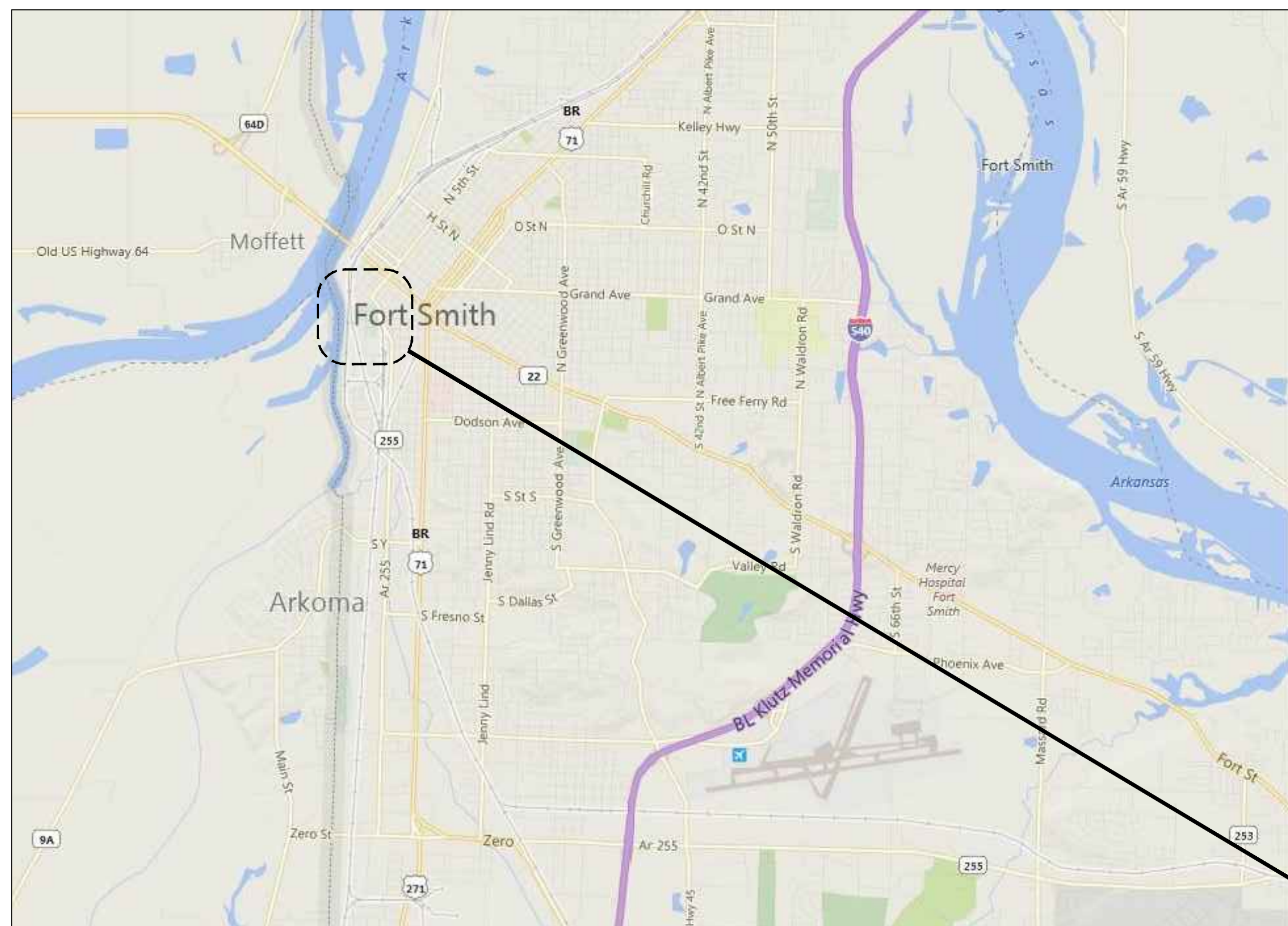


Department Of Veterans Affairs

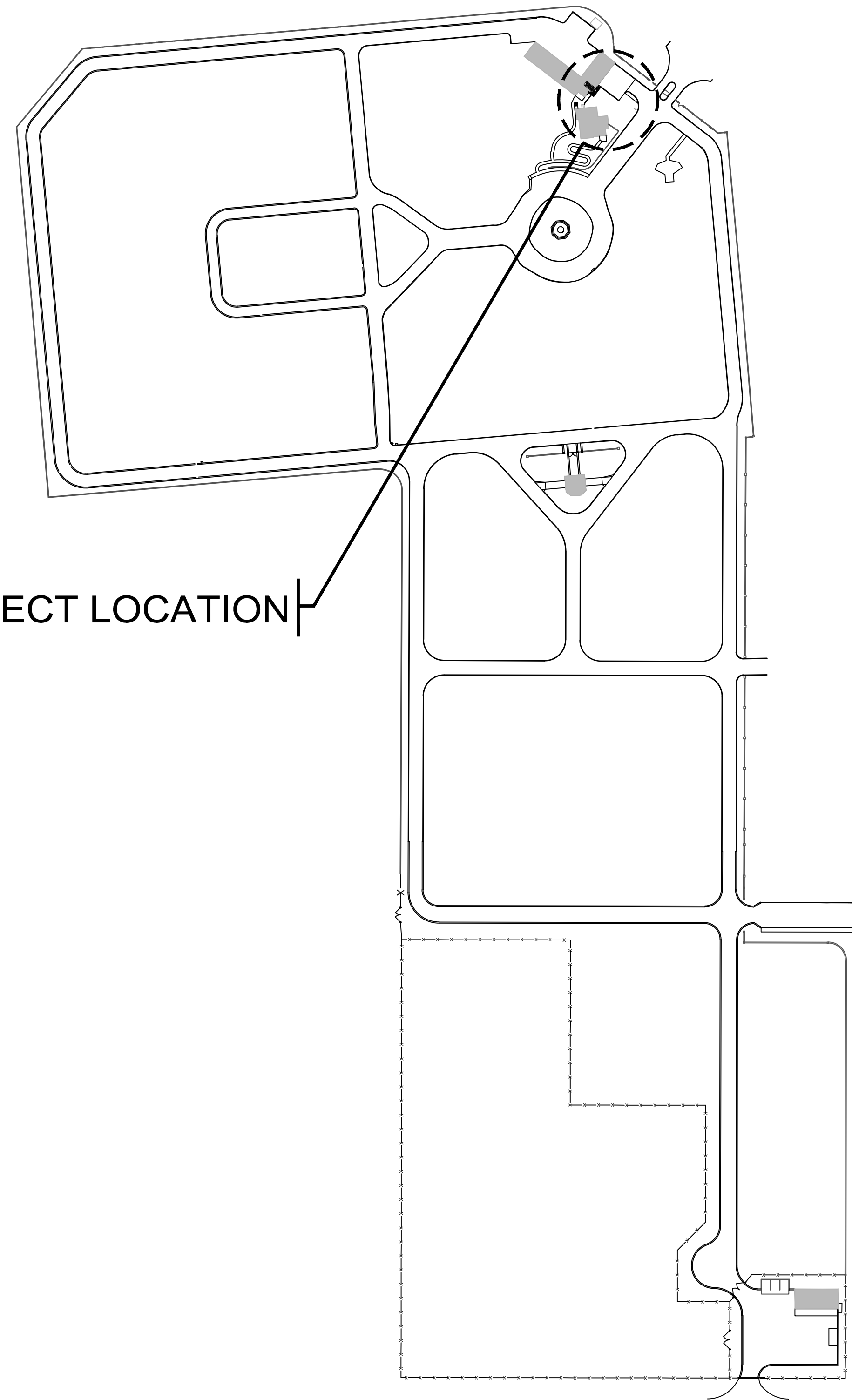
FORT SMITH NATIONAL CEMETERY FORT SMITH, ARKANSAS

SIDEWALK DRAINAGE, RESTROOM BLDG PROJECT NUMBER 847-17-201



LOCATION MAPS

PROJECT LOCATION



SITE PLAN

SHEET INDEX:

- X- 101 TITLE SHEET
- X- 102 GENERAL NOTES
- D- 101 DEMOLITION PLAN
- L- 101 SITE PLAN
- L- 102 DRAINAGE PLAN
- L- 103 PAVEMENT PLAN
- L- 201 DETAILS

Revisions	Date



NATIONAL
CEMETERY
ADMINISTRATION

Drawing Title
**COVER SHEET
& SHEET INDEX**

Approved: Division Chief

Approved: Service Director

Project Title
**SIDEWALK
DRAINAGE**

Building Number

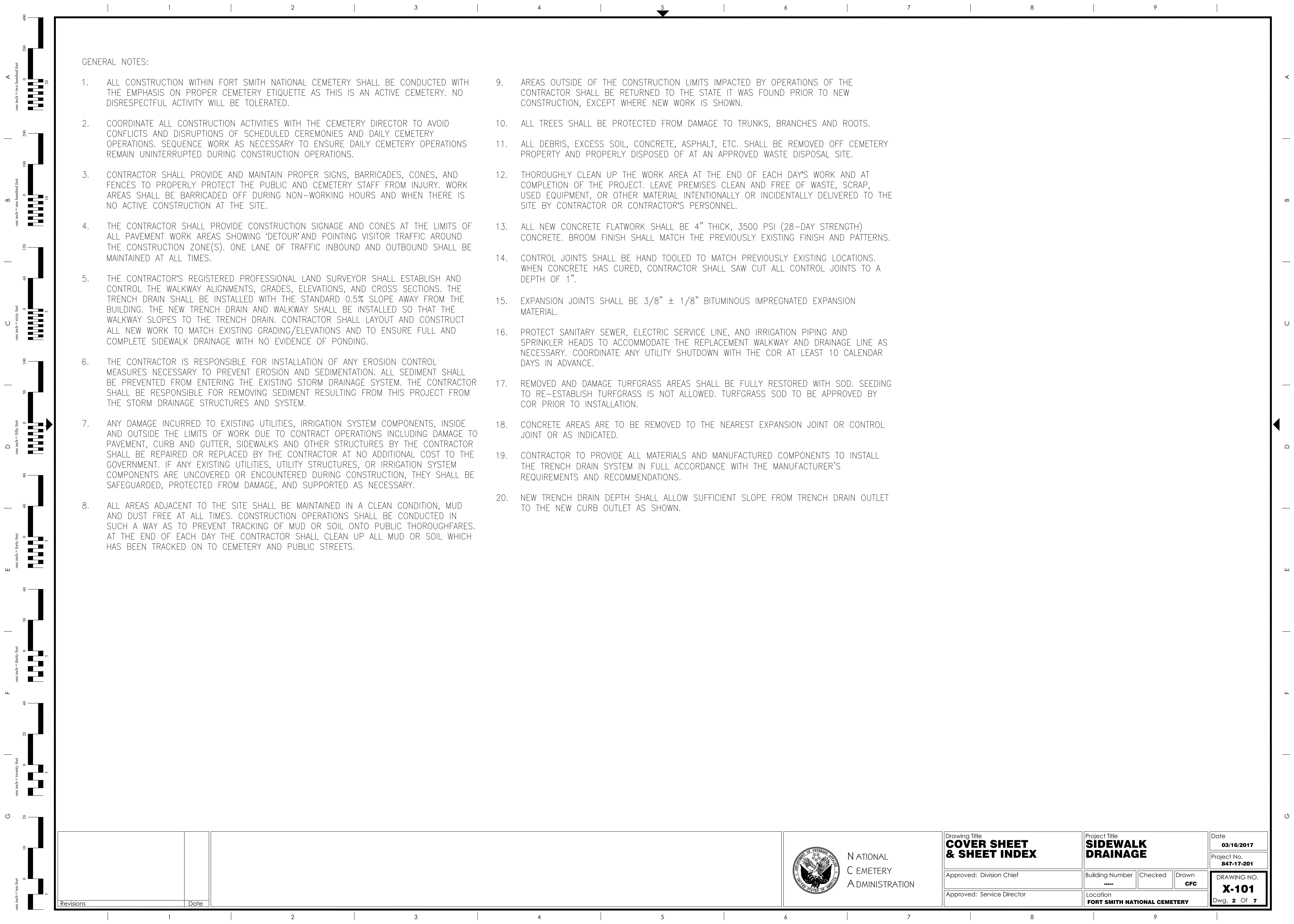
Location
FORT SMITH NATIONAL CEMETERY

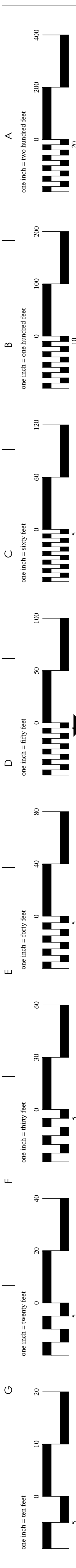
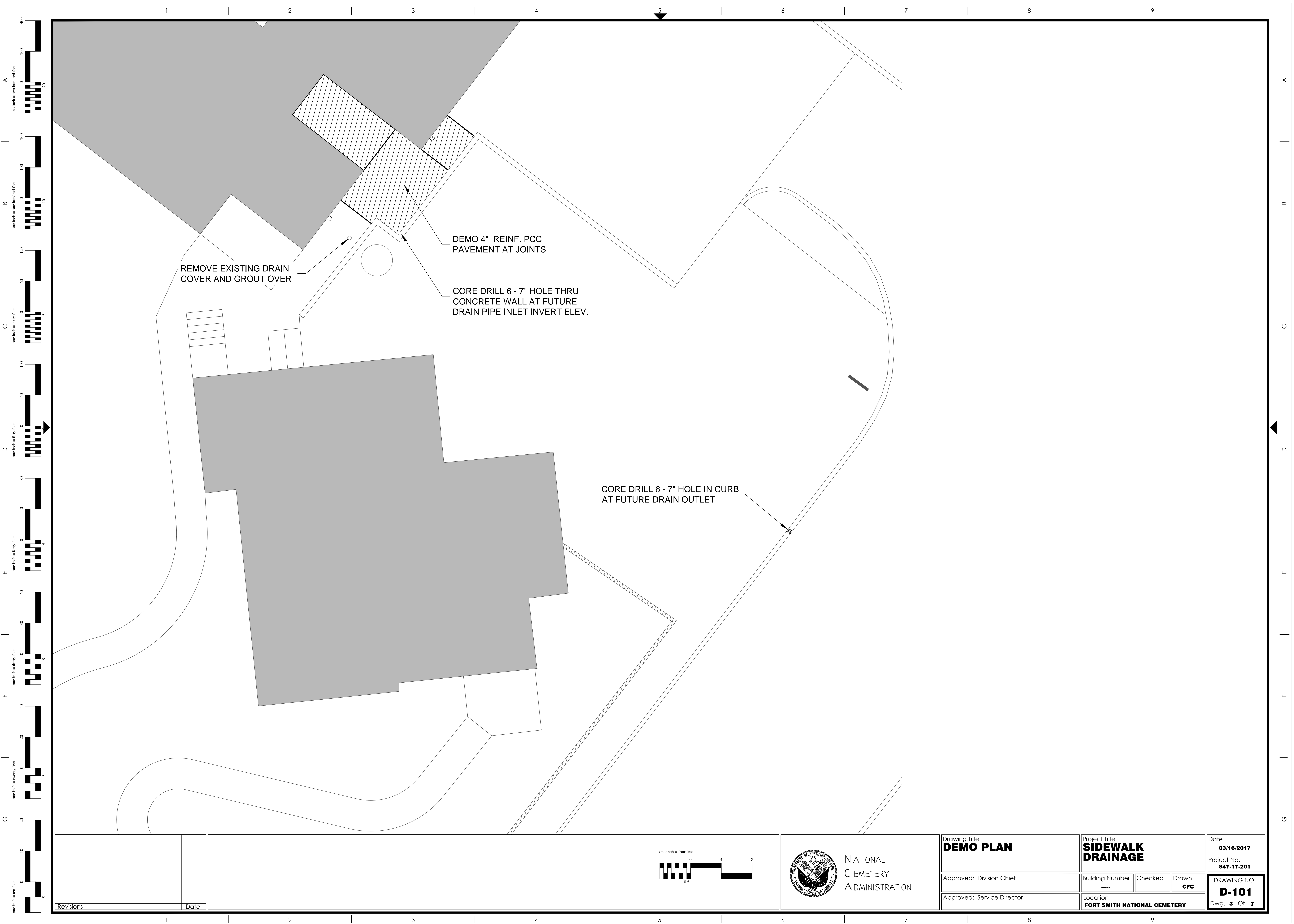
Date
03/16/2017

Project No.
847-17-201

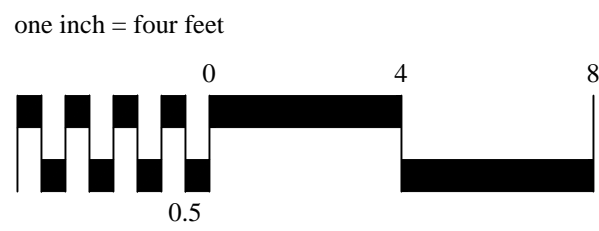
DRAWING NO.
X-101

Dwg. 1 Of 7





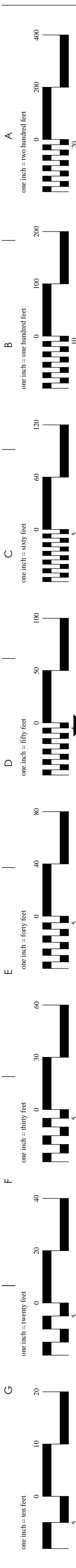
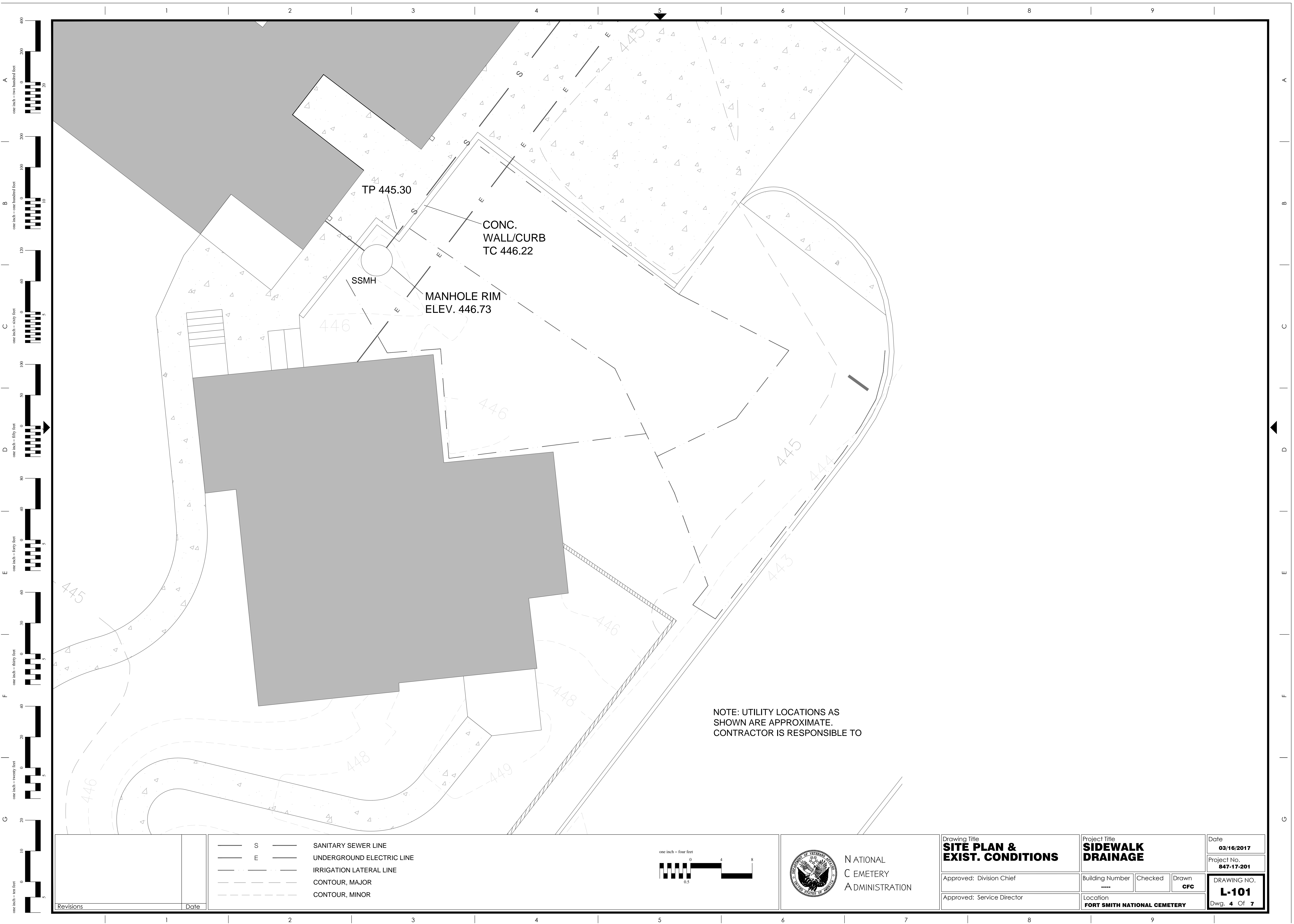
Revisions	Date



NATIONAL
CEMETERY
ADMINISTRATION

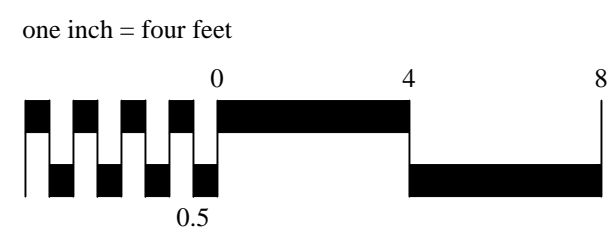
Drawing Title DEMO PLAN	Project Title SIDEWALK DRAINAGE	Date 03/16/2017
Approved: Division Chief	Building Number *****	Checked
Approved: Service Director	Location FORT SMITH NATIONAL CEMETERY	Drawn CFC
DRAWING NO. D-101		Date 03/16/2017

Dwg. 3 Of 7



Revisions	Date

— S —	SANITARY SEWER LINE
— E —	UNDERGROUND ELECTRIC LINE
- - -	IRRIGATION LATERAL LINE
- - -	CONTOUR, MAJOR
- - -	CONTOUR, MINOR

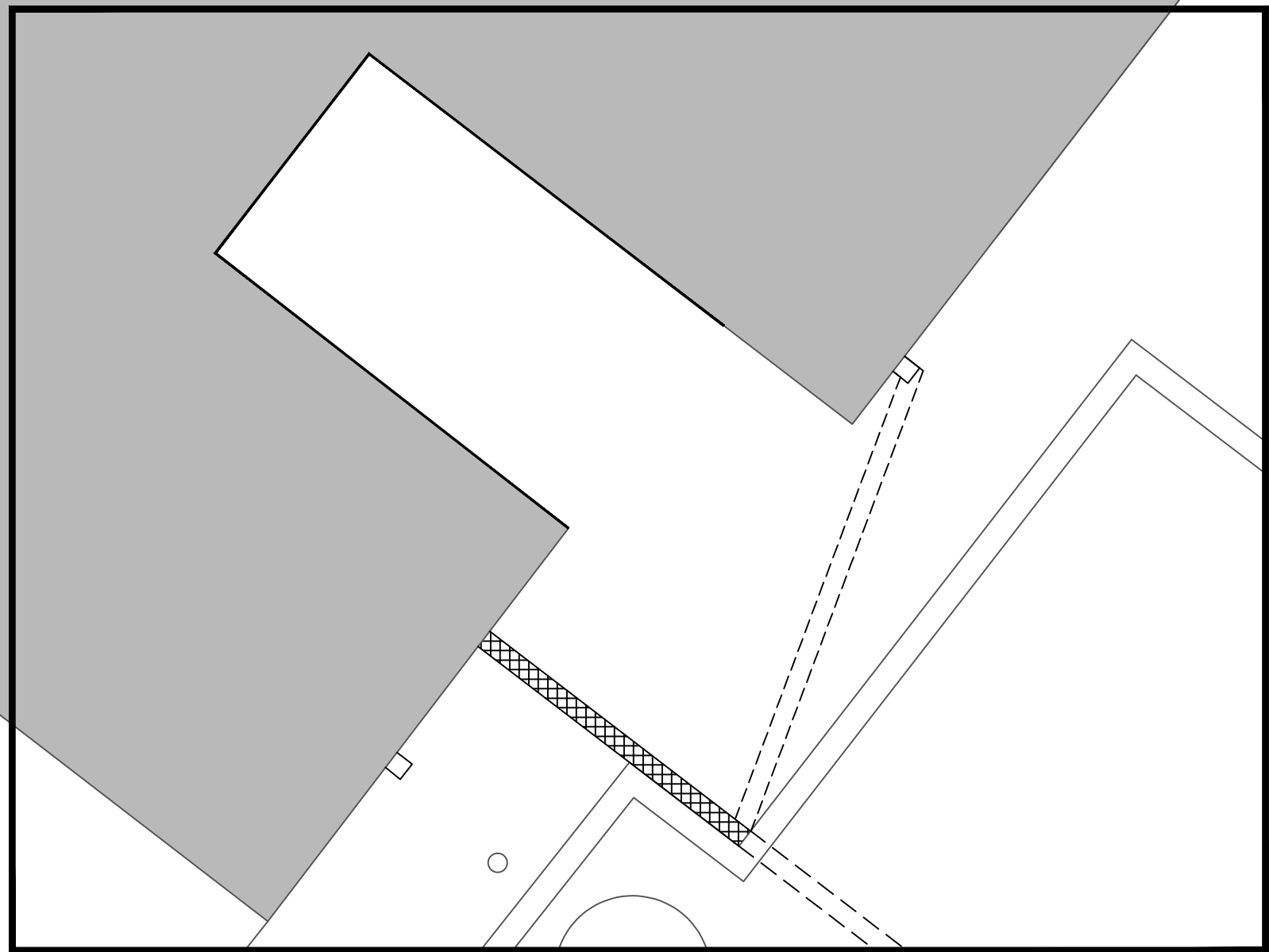
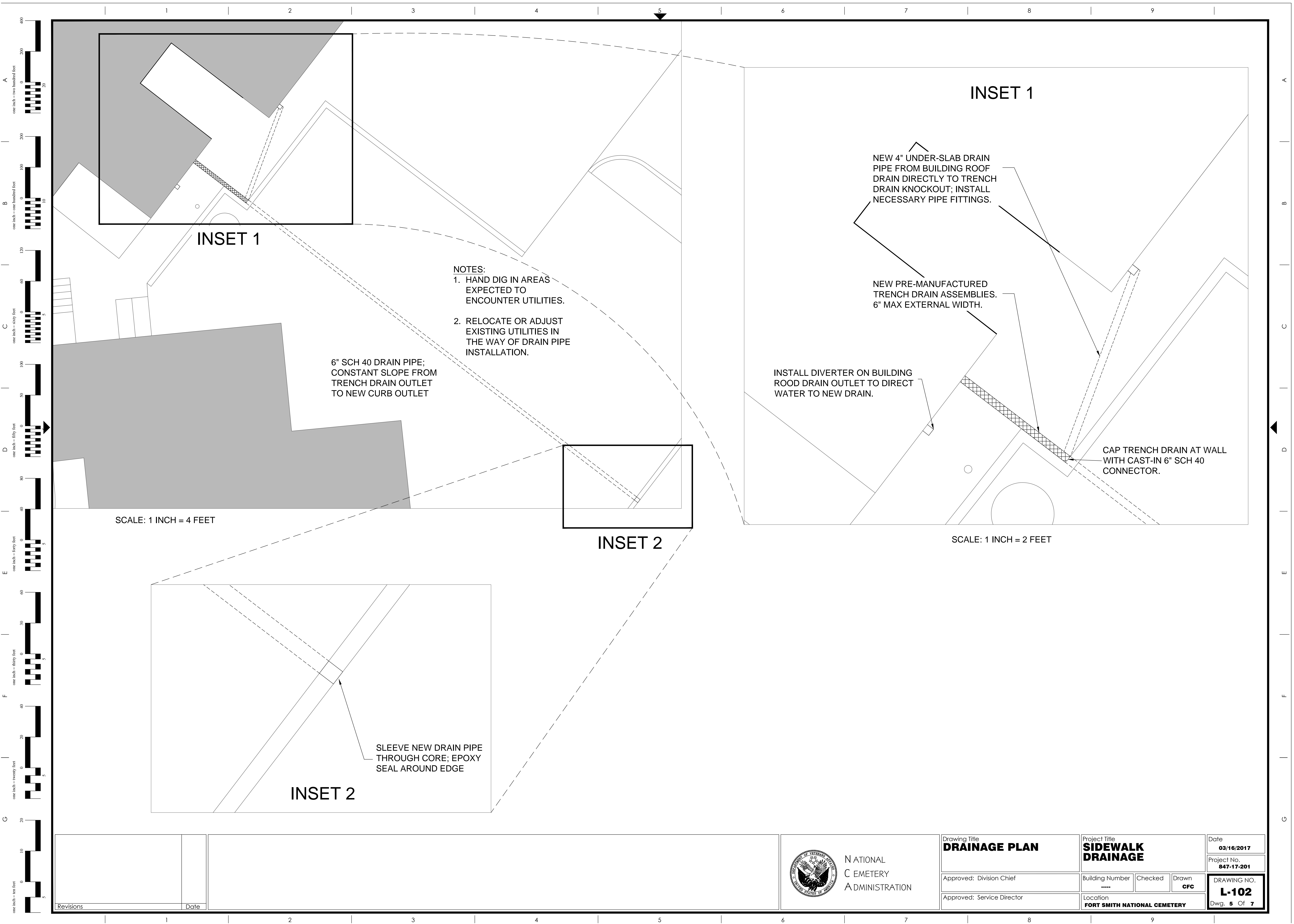


NATIONAL
CEMETERY
ADMINISTRATION

Drawing Title SITE PLAN & EXIST. CONDITIONS
Approved: Division Chief
Approved: Service Director

Project Title SIDEWALK DRAINAGE		
Building Number *****	Checked	Drawn CFC
Location FORT SMITH NATIONAL CEMETERY		

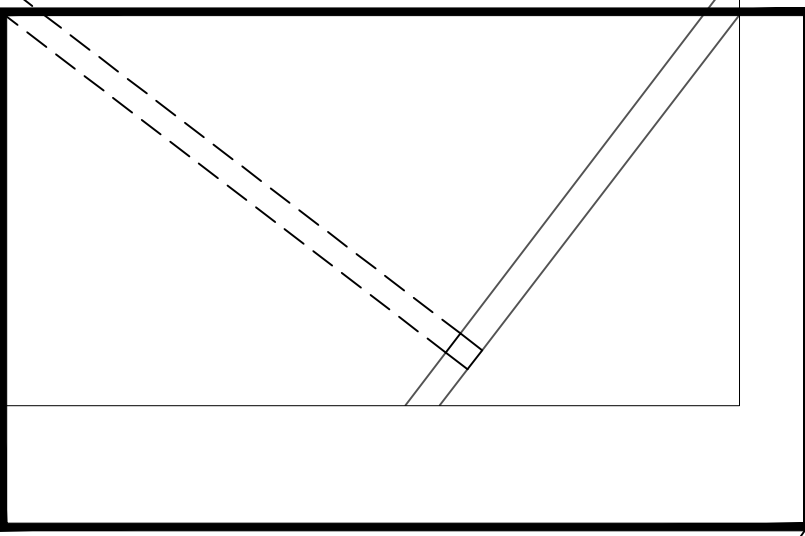
Date 03/16/2017
Project No. 847-17-201
DRAWING NO. L-101
Dwg. 4 Of 7



INSET 1

- NOTES:
- HAND DIG IN AREAS EXPECTED TO ENCOUNTER UTILITIES.
 - RELOCATE OR ADJUST EXISTING UTILITIES IN THE WAY OF DRAIN PIPE INSTALLATION.

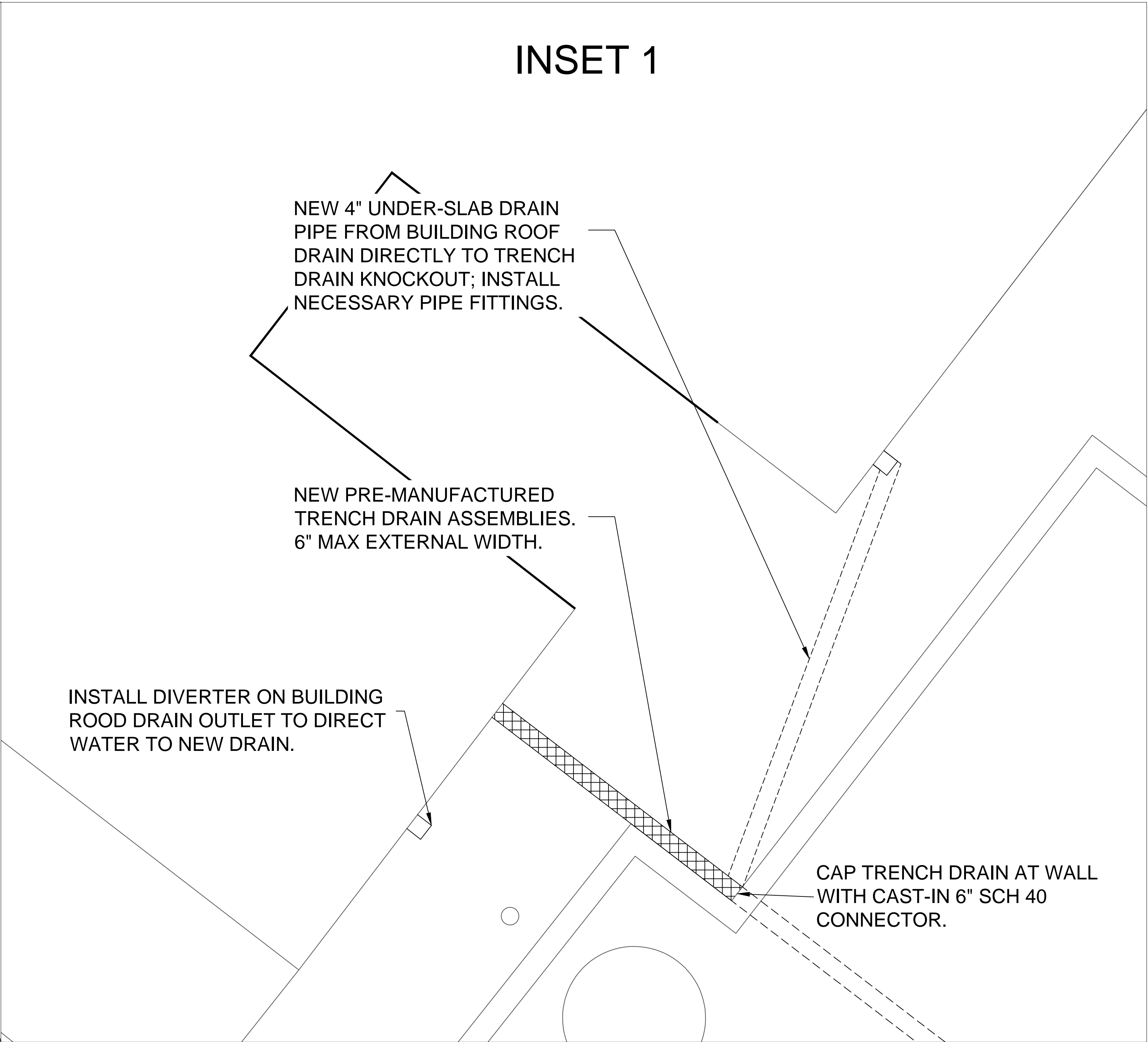
6" SCH 40 DRAIN PIPE;
CONSTANT SLOPE FROM
TRENCH DRAIN OUTLET
TO NEW CURB OUTLET



INSET 2

SLEEVE NEW DRAIN PIPE
THROUGH CORE; EPOXY
SEAL AROUND EDGE

INSET 2



INSET 1

NEW 4" UNDER-SLAB DRAIN
PIPE FROM BUILDING ROOF
DRAIN DIRECTLY TO TRENCH
DRAIN KNOCKOUT; INSTALL
NECESSARY PIPE FITTINGS.

NEW PRE-MANUFACTURED
TRENCH DRAIN ASSEMBLIES.
6" MAX EXTERNAL WIDTH.

INSTALL DIVERTER ON BUILDING
ROOD DRAIN OUTLET TO DIRECT
WATER TO NEW DRAIN.

CAP TRENCH DRAIN AT WALL
WITH CAST-IN 6" SCH 40
CONNECTOR.

SCALE: 1 INCH = 2 FEET

SCALE: 1 INCH = 4 FEET

Revisions	Date



NATIONAL
CEMETERY
ADMINISTRATION

Drawing Title
DRAINAGE PLAN

Approved: Division Chief

Approved: Service Director

Project Title
**SIDEWALK
DRAINAGE**

Building Number

Checked
CFC

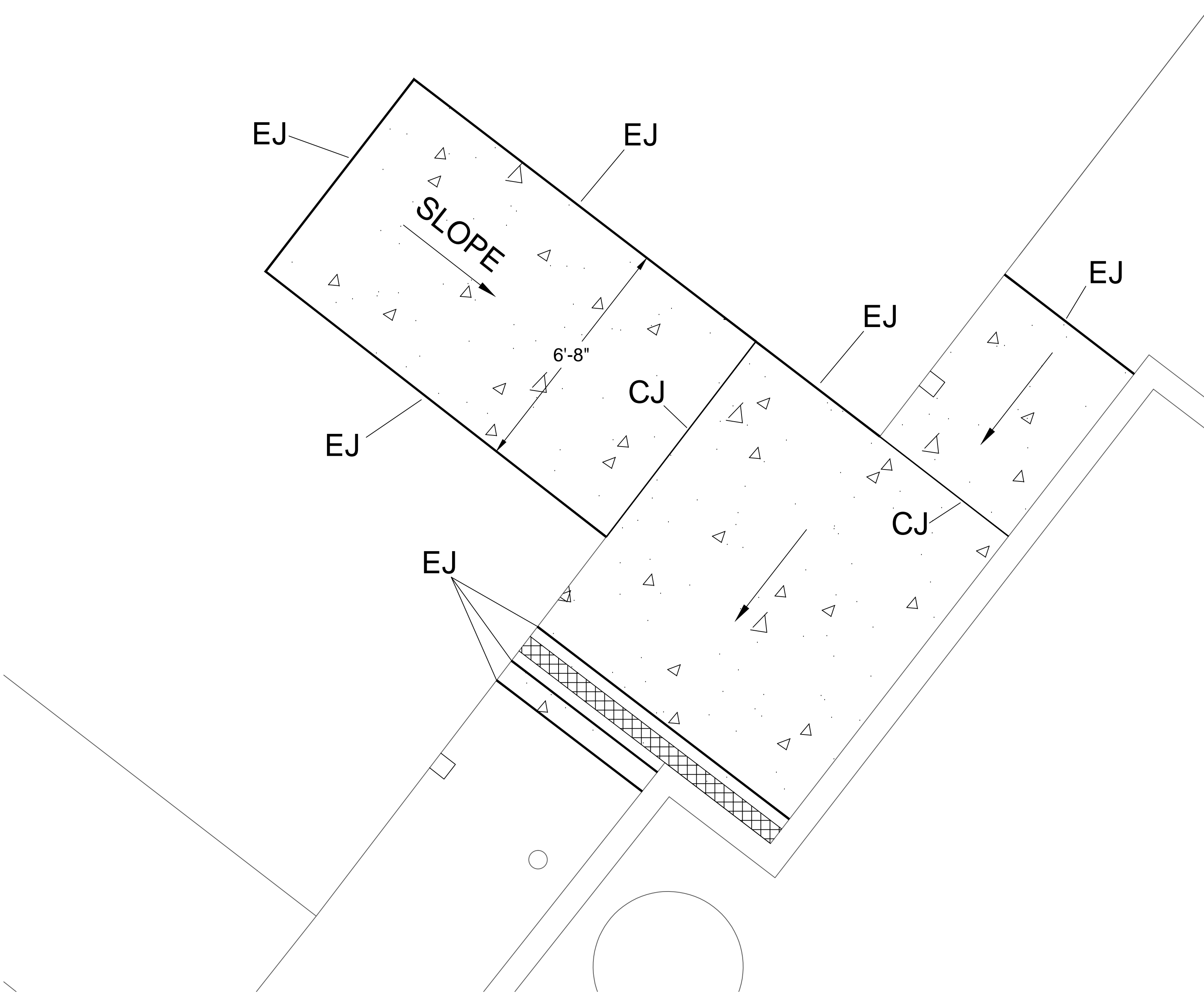
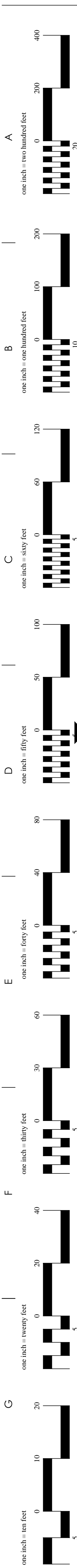
Location
FORT SMITH NATIONAL CEMETERY

Date
03/16/2017

Project No.
847-17-201

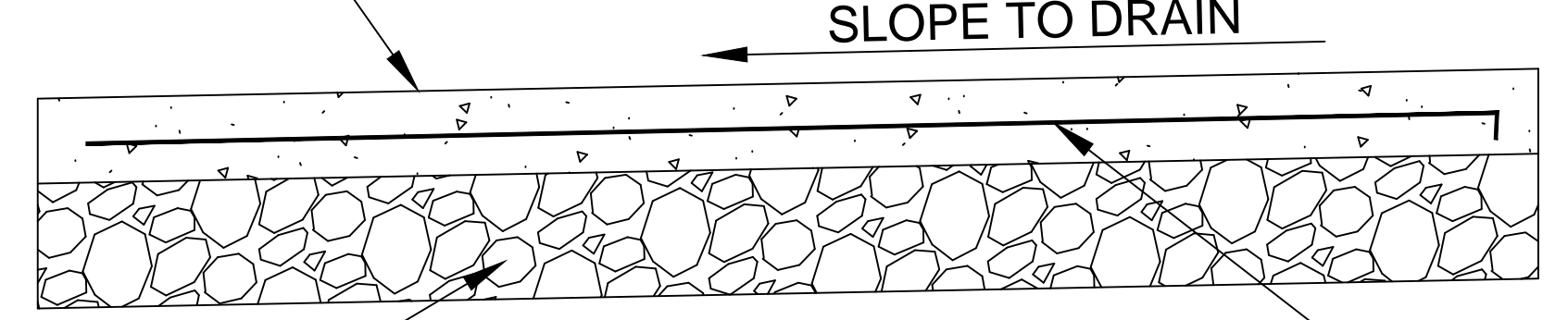
DRAWING NO.
L-102

Dwg. 5 Of 7



1 PAVEMENT PLAN
N.T.S.

4" THICK, 3,500 PSI CONC.
WITH MEDIUM BROOM FINISH
COLORED CONC. PER SPECS.



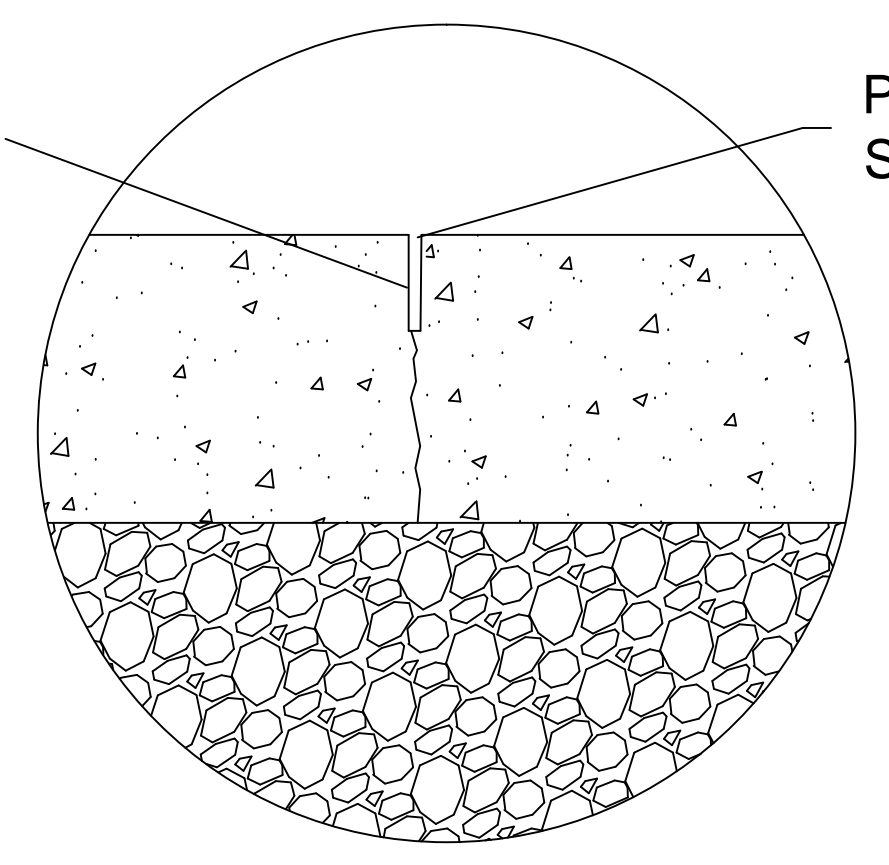
MIN. 4" AGG. BASE;
COMPACTED TO 95%
(ASTM D1557)

6"x6" WWF, 2.9Wx2.9W WIRE
MESH REINFORCEMENT SET ON
CHAIRS WITH 2" CLR. (TYP.)

SLOPE TO DRAIN

2 CONCRETE WALKWAY PAVEMENT
N.T.S.

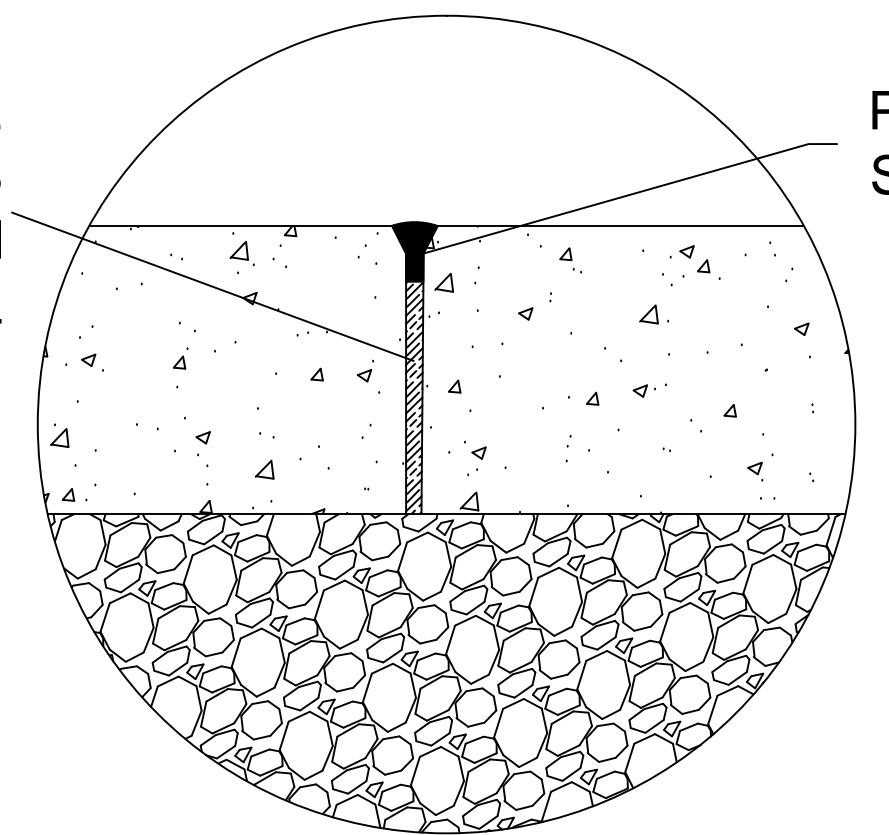
1/4" ± 1/8" WIDE,
1" DEEP SAW CUT



POLYURETHANE
SEALANT

3 SEALED CONTROL JOINT (CJ)
N.T.S.

3/8" ± 1/8" WIDE, FULL
DEPTH BITUMINOUS
FIBER EXPANSION
JOINT MATERIAL



POLYURETHANE
SEALANT

4 EXPANSION JOINT (EJ)
N.T.S.



NATIONAL
CEMETERY
ADMINISTRATION

Drawing Title
**SIDEWALK
PAVEMENT PLAN**

Approved: Division Chief

Approved: Service Director

Project Title
**SIDEWALK
DRAINAGE**

Building Number

Location
FORT SMITH NATIONAL CEMETERY

Date
03/16/2017

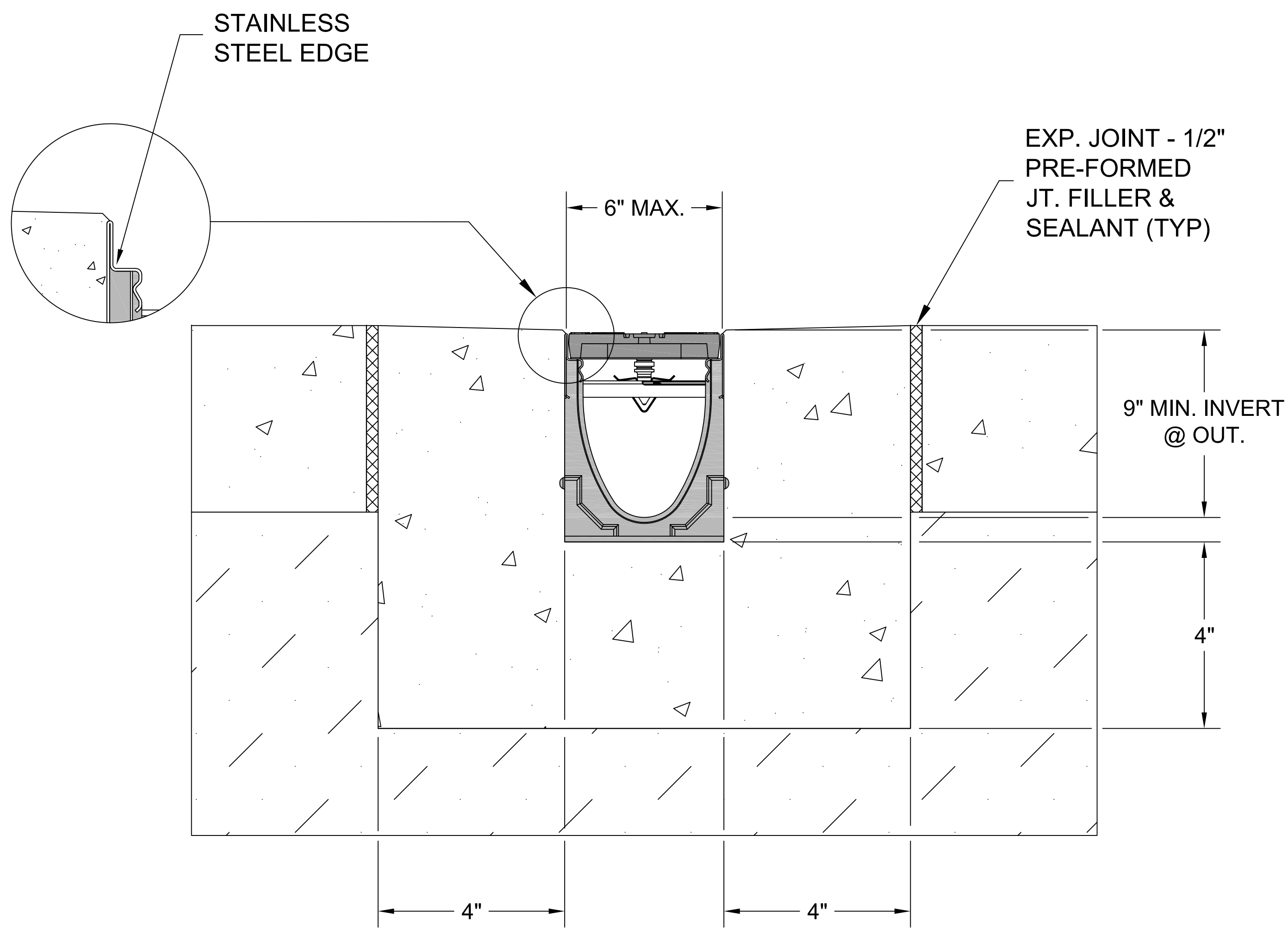
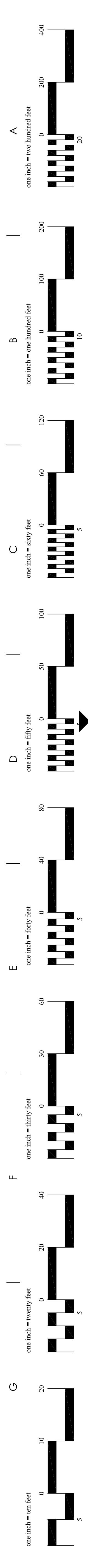
Project No.
847-17-201

DRAWING NO.

L-103

Dwg. 6 Of 7


Revisions	Date



NOTES:

1. ENSURE MINIMUM DIMENSIONS SHOWN ARE SUITABLE FOR EXISTING GROUND CONDITIONS.
2. THE FINISHED LEVEL OF THE CONCRETE SURROUND MUST BE APPROX. 1/8" ABOVE THE TOP OF THE CHANNEL EDGE.
3. CONCRETE BASE THICKNESS SHALL MATCH SLAB THICKNESS.
4. ALL CHANNELS SHALL BE INTERLOCKING WITH MALE/FEMALE JOINT.
5. CHANNEL SHALL HAVE SIDE KNOCK-OUT TO ACCEPT DRAIN PIPE FROM BUILDING.
6. OUTLET END CAP SHALL HAVE CAST-IN 6" SCH 40 CONNECTOR.
7. STAINLESS STEEL GRATE SHALL BE LOAD CLASS B WITH QUICK LOCKING SYSTEM AND REMOVAL TOOL; ADA COMPLIANT; SLIP RESISTANT; AND HIGH HEEL SAFE.
8. TRENCH DRAIN, GRATE, AND ACCESSORIES SHALL BE MANUFACTURED BY THE SAME COMPANY AND INTENDED FOR USE TOGETHER AS A SYSTEM.
9. THE SYSTEM SHALL BE INSTALLED IN ACCORDANCE WITH THE MANUFACTURER'S INSTRUCTIONS AND RECOMMENDATIONS.

1 TRENCH DRAIN
L-102 N.T.S.

			 NATIONAL CEMETERY ADMINISTRATION	Drawing Title TRENCH DRAIN DETAILS		Project Title SIDEWALK DRAINAGE		Date 03/16/2017
				Approved: Division Chief	Building Number *****	Checked	Drawn CFC	Project No. 847-17-201
Revisions		Date		Approved: Service Director	Location FORT SMITH NATIONAL CEMETERY		DRAWING NO. L-201 Dwg. 7 Of 7	

