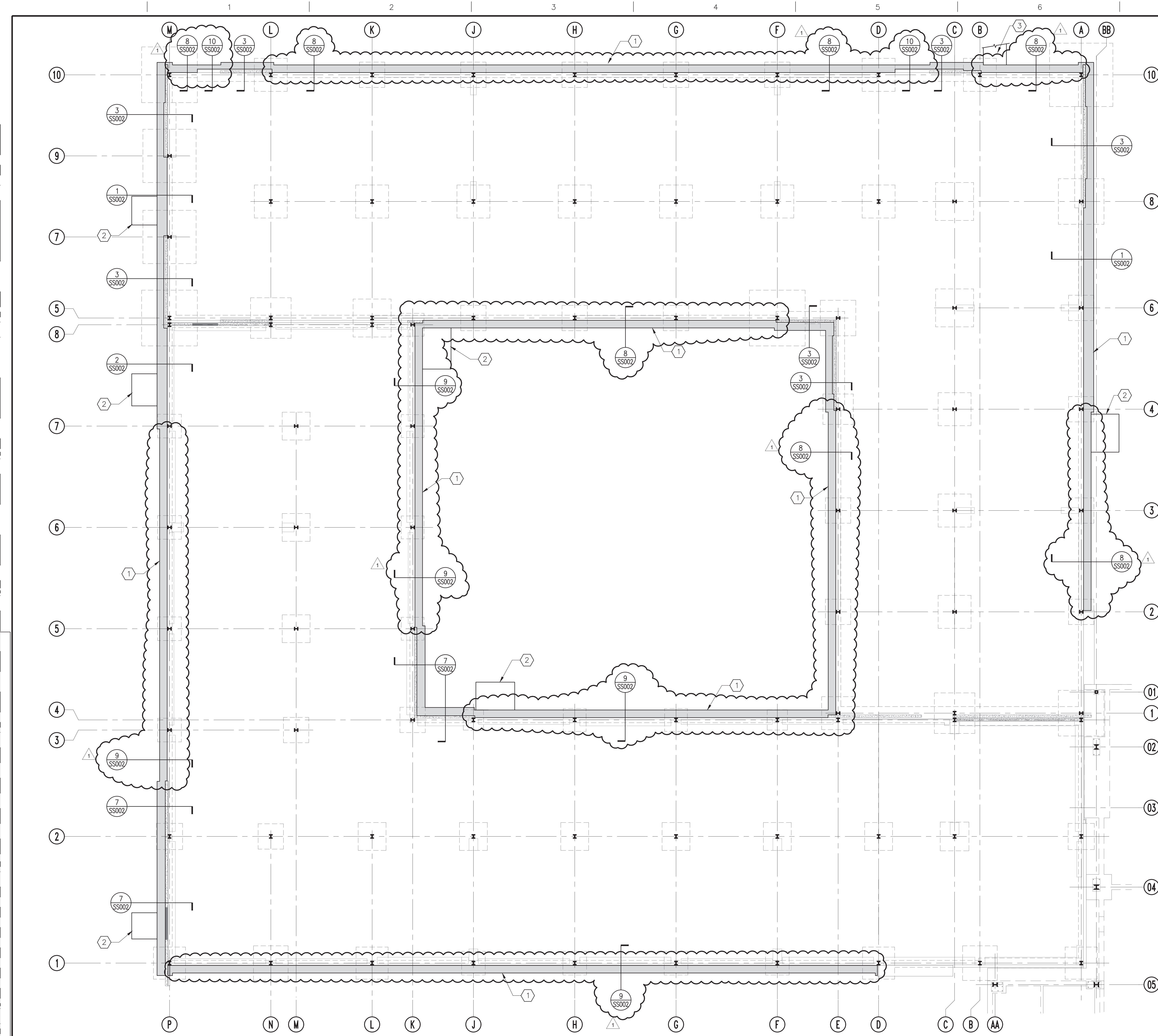


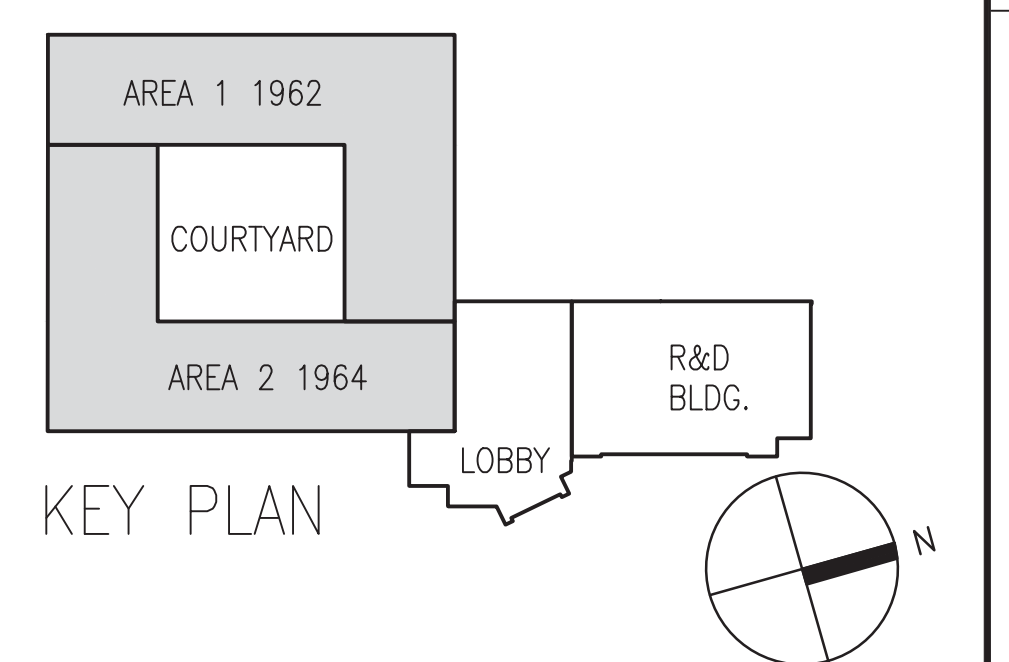
three inches = one foot
one and one half inches = one foot
one inch = one foot
three quarters inch = one foot
one half inch = one foot
three eighths inch = one foot
one quarter inch = one foot
one eighth inch = one foot



- FOUNDATION PLAN GENERAL NOTES:**
1. TOP OF SLAB AT ELEVATION 0'-0". TYPICAL UNLESS NOTED OTHERWISE.
 2. SEE SHEET SS002 FOR ADDITIONAL REQUIREMENTS.
 3. DESCRIPTION

- FOUNDATION PLAN KEYED NOTES:**
- 1 NEW GRADE BEAM, SEE DETAIL CALLOUTS.
 - 2 NEW CONCRETE STOOP, SEE DETAIL 5 & 6/SS002.
 - 3 CONCRETE LANDING/RAMP, SEE 2/CS100.

PARTIAL FOUNDATION PLAN
1 1/8" = 1'-0"



100% CONSTRUCTION DOCUMENTS

CONSULTANTS: BRYAN BENNO BRAUER, P.E. CONSULTING ENGINEER PO BOX 2586, TRUCKEE, CA 96160 (530)582-8883 BRYAN@BBBRAUER.COM 07/18/2017 Date		ARCHITECT/ENGINEERS: ARSenio ORTEGA, P.E. CONSULTING ENGINEER 5 Third Street, Suite 716 San Francisco, CA 94103 (415) 546-0490 tel -0491 fax KPA THE KPA GROUP ENGINEERS ARCHITECTS 6700 KOLL CENTER PARKWAY SUITE 125 PLEASANTON, CALIFORNIA 94566 TEL 925.223.8217 www.thekpagroup.com ©THE KPA GROUP 2017 KPA Project No. 630.00		Drawing Title FOUNDATION PLAN Approved Project Director - VAPAHCS PLANNING AND ENGINEERING		Project Title REPLACE SUNNYVALE BLDG. 1 EXTERIOR AND ROOF Location 1080 INNOVATION WAY, SUNNYVALE, CA 94089 Date 03/03/2017 Checked PWP Drawn KPA TEAM		Project Number 640-16-121 Building Number 1002 Drawing Number SS101 Dwg. of		Office of Construction and Facilities Management VA & PAHCS Veterans Affairs Palo Alto Health Care System	
--	--	---	--	--	--	---	--	--	--	--	--