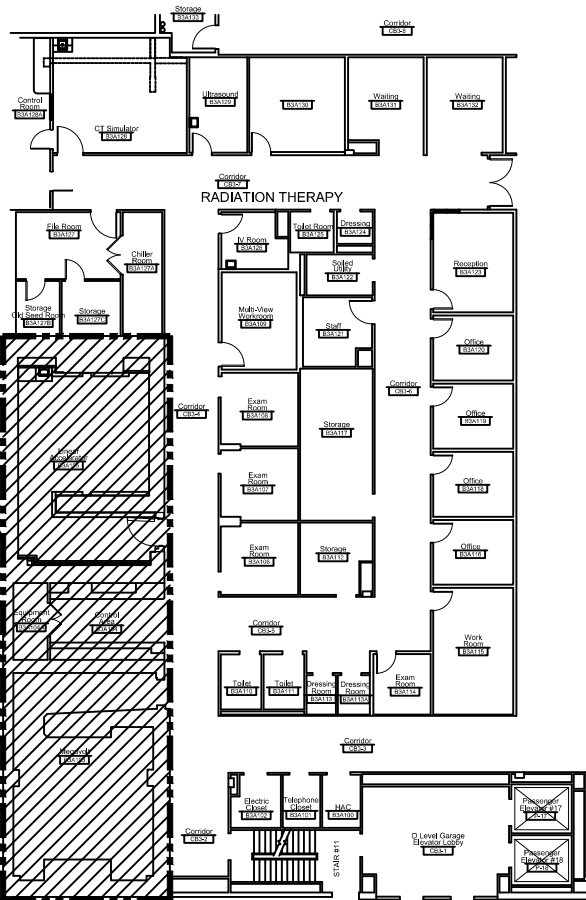


LIMIT OF WORK
APPROXIMATE
SQUARE FOOTAGE 2,300 SQFT

LIMIT
OF WORK



1 Partial Sub-Basement Plan - Building 2
NOT TO SCALE



Site Prep for SRS - Radiation Therapy

1 OF 1

5/4/17

SK-1

VETERANS
AFFAIRS